

1.5" DIGITAL PHOTO KEYCHAIN

See Things Differently™



INSTRUCTION MANUAL
N1-506

Thank you for purchasing the Nextar N1-506 Portable Keychain Photo Album. Please read this manual to get the optimum performance out of this product.

Quickstart Guide

NOTE: YOU MUST INSTALL INCLUDED SOFTWARE BEFORE ATTACHING YOUR PHOTO ALBUM TO YOUR PC.

Software Installation:

1. Insert the included CD into your PC's CDROM drive
2. Open "My Computer" and find the CD you just inserted. It will appear similar to the image below:



3. Double click the CD drive icon to open the CD. **** NOTE** THE ACTUAL**
- from www.SerManuals.com. All Manuals Search And Download.

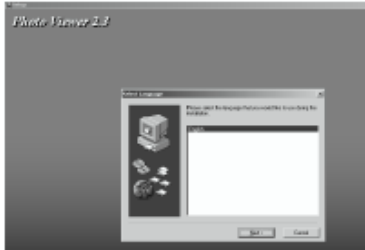
DRIVE LETTER (D IN THIS CASE) COULD BE DIFFERENT ON YOUR PC. LOOK FOR THE DRIVE THAT IS THE CDROM ON YOUR PARTICULAR PC

4. For windows computer, double click the "Windows software folder icon, inside that folder, double click the " PhotoViewer v 2.3 Setup. exe" icon.

For Mac computer, double click the "Mac software folder icon, inside that folder, double click the " Digital Photo Viewer 1.0.0 Mac OS X.dmg" icon **NOTE: THE EXACT REVISION NUMBER OF THE VERSION ON YOUR CD COULD BE DIFFERENT THAN IN THE PHOTO BELOW:**



5. After double clicking this icon, the following screen should appear:



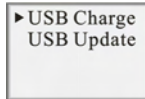
6. Follow the on-screen prompts to install the software. Accept all the "defaults" that the program suggests (if you are experienced in installing software you can customize your install)

You are now ready to charge your Keychain Photo Album.

1. Using the included cable, plug the cable into your PC first, and then into your Mini Photo Album.

NOTE: YOUR PHOTO ALBUM MUST BE FULLY CHARGED BEFORE USING IT. THIS CHARGING TIME IS TYPICALLY 2-3 HOURS

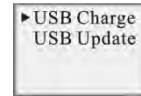
2. When the unit is first plugged in to your PC, the following screen appears:



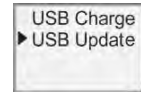
There will be a blinking battery icon in the lower left hand corner. This icon will stop flashing once your unit is fully charged

3. Once the unit is fully charged, unplug it from your PC and turn it off using the ON/OFF switch on the side of the unit.
4. With the unit off, plug it back into your PC (using the same procedure as #1).

5. You will see the following screen:



Using the DOWN navigation button on the side of the unit, move the cursor down to the USB Update position:

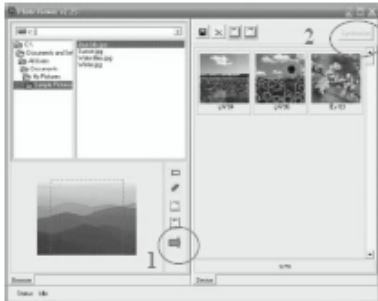


Then press the MENU (top) button to select the Update mode. The following screen will appear one photo that you download to the unit:



You are now ready to transfer images to and from your unit.

6. Once the unit is in the “updating” mode, go to your START/ALL PROGRAMS menu and look for the newly installed program group. It should be called “Photo Viewer”
7. Go to this new program group and double click the Photoviewer icon to open the program
8. Once open, you should see a program screen similar to the one below:



↑
This side shows the navigation of images on your PC

↑
This side shows images installed on your Mini Photo Album

9. To add pictures to your Mini Photo Album from your PC, navigate to the image on your PC using the controls on the left-hand side of the Photoviewer software
10. Select the photo you want to add by clicking on it once.
11. Then click the blue arrow (circled on the image as “1”) to POST the image to the keychain.
12. Then to finalize the transfer, click the SYNCHRONIZE button (circled on the image as “2”) to make the transfer complete
13. You can delete images on the Photo Key-Chain by selecting them, pressing the DELETE button and then the synchronize button

Once you have completed the transfer of images to your Keychain Photo Album, exit the Photoviewer software and remove your unit from your PC by disconnecting the USB cable from your Photo Album first and then from your PC.

To turn on the Photo Album, make sure the POWER button is in the ON position, and

Download from [Www.Somanuals.com](http://www.Somanuals.com). All Manuals Search And Downl

then press the MENU button for 2 seconds
To flip through images stored on your Photo Album, use the UP/ DOWN buttons.

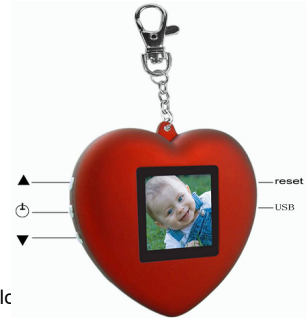
Detailed Instructions:

Supported graphic formats

- BMP
- JPG
- GIF

Button Functions

1. Power ON/OFF and MENU
2. Navigate UP
3. Navigate DOWN
4. reset



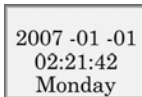
Menu Functions:



OFF - This menu selection will turn the unit off. Using the ▲ ▼ up/down buttons. Press the MENU button to make selections

Display Mode- This selection allows you to choose an AUTO or MANUAL slide show. Selecting AUTO will generate an automatic slide show. You can adjust the timing of each slide by using the up/down ▲ ▼ buttons. Selecting MANUAL will

CLOCK SET -



This selection will allow you to set the unit's clock. Use the MENU button to select the date/time/day line, and then use the up/down buttons to select the

Press MENU to exit this function
correct date/time/day.

Auto ON/OFF -

Selecting "ON" will put the unit into an auto power-off mode and if no buttons are pushed the unit will shut off after a

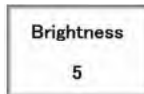
allow you to manually select images using the up/down buttons. Press MENU to exit and return to the main menu

Clock Disp-

predetermined amount of time. This function saves battery power

Selecting OFF turns this feature off and returns to the main menu.

This selection displays the date / time on the screen



LCD Contrast -

This function allows you to adjust the contrast of the screen. using the up/down ▲ ▼ buttons select between 1 and 16 Press MENU to exit.

Delete - This selection will allow you to manually delete an image while viewing it. While in the viewer mode, select MENU, and scroll down to DELETE. will get a confirmation screen "DELETE?" Press MENU again to delete the image.

Exit - This selection exits the menu screen and returns to the image or clock display

Specifications:

- Image storage capacity ~ 60 images
- Image formats: BMP, JPG, GIF
- Display size: 1.5" CSTN LCD. 128X128 65k color resolution
- Power source: 3.7V lithium ion rechargeable battery

Included In Package:

- Keychain Photo Album
- Software CD
- USB cable
- Key chain
- Instruction manual
- Product registration card
- Warranty card

System Requirements:

- Windows 98/2000/ME/XP/Vista&MAC OS
- 125MB of available hard drive space
- Color monitor
- CDROM drive
- USB 1.1 or 2.0 port

NOTE: The Keychain Photo Album LCD screen may have slight variations in contrast – that is normal. Do not attempt to open the unit as that will void the warranty. Only use water and a soft cloth to clean the screen. Do not store in very hot/cold/humid locations. Use only included cables and connectors.

This device complies with Part 15 of the FCC Rules. Operation is subject to the following two conditions: (1) this device may not cause harmful interference, and (2) this device must accept any interference received, including interference that may cause undesired operation.

Note: This equipment has been tested and found to comply with limits for Class B digital device, pursuant to part 15 of the FCC Rules. These limits are designed to provide reasonable protection against harmful interference in a residential installation.

This equipment generates, uses and can radiate radio frequency energy and, if not installed and used in accordance with the instructions, may cause harmful interference to radio or television reception, which can be determined by turning the equipment off and on, the user is encouraged to try to correct the interference by one or more of the following measures:

1. Reorient or relocate the receiving antenna.
2. Increase the separation between the equipment and the receiver. Connect the equipment into an outlet on a circuit different from that to which the receiver is connected.
3. Consult the dealer or an experience radio/TV technician for help.

Nextar may find it necessary to modify, amend or otherwise change or update this manual.

We reserve the right to do this at any time, without any prior notice. All specifications and features are subject to change without notice.

All screen shots shown are simulated and may not represent the actual screen on production units sold to consumers.

For instruction manuals, updated drivers or other information, be sure to visit our website at:

www.Nextar.com

Or write us at:

Nextar

1661 Fairplex Dr.

LaVerne, CA USA 91750

Copyright © 2007

Free Manuals Download Website

<http://myh66.com>

<http://usermanuals.us>

<http://www.somanuals.com>

<http://www.4manuals.cc>

<http://www.manual-lib.com>

<http://www.404manual.com>

<http://www.luxmanual.com>

<http://aubethermostatmanual.com>

Golf course search by state

<http://golfingnear.com>

Email search by domain

<http://emailbydomain.com>

Auto manuals search

<http://auto.somanuals.com>

TV manuals search

<http://tv.somanuals.com>