

nextar 

# DIGITAL PHOTO KEYCHAIN

*See Things Differently™*



N1-510

INSTRUCTION MANUAL

*Wherever you go...*

Download from [Www.Somanuals.com](http://www.Somanuals.com). All Manuals Search And Download

## Digital Image Player User's Manual

### Special Reminder:

Some parts of the LCD display may seem lighter or darker. This is common and not a fault of the product. Do not try to dismantle or repair this product yourself, as this will void the warranty.

### Safety and Maintenance

To ensure that your digital image player continues to function properly, please consider the following information:

1. Before using this product for the first time, carefully read the user's manual included with the digital image player.
2. Be sure to use the correct cable to charge this product. Using another power source may destroy your digital image player.
3. Do not use the player near water as it may be damaged.
4. Do not press extremely hard on the player's buttons. It is a delicate product and could easily be damaged.
5. Handle the LCD display with care. Clean the screen with a soft, damp cloth. Press lightly and wipe in a circular motion from the center outwards.
6. Do not touch the LCD screen with your fingers, as the oils can damage the screen.
7. Do not place heavies on top of the player, as this may cause the LCD display break.
8. This player is designed to be compatible with Microsoft Windows

2000, XP, Vista, MAC OS, It supports JPG and BMP formats only.

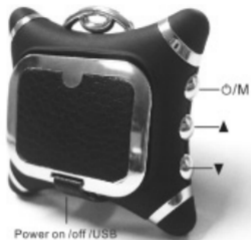
**Note: Player will not be recognized by your computer when you just connect the player to your computer by USB cable, but the player will turn on automatically, please press Menu Key and select “USB Connect” , and then select “Yes” to enable the connection. Your computer will detect the player and will create a new disk in your computer “Nextar”, Once double Click this disk, it will open the window for updating the pictures in the player.**

## Table of Contents

<b>Safety and Maintenance</b> .....	1
<b>A. About your Player</b> .....	4
o Appearance and Buttons.....	4
o Battery.....	5
<b>B. Function Description</b> .....	5
o Browse Pictures.....	5
<b>C. Panel Menu Function Introduction</b> .....	6
o Enter Menu.....	6
<b>D. Mode Functions and Basic Operation</b> .....	6
1. Connect to Computer.....	6
2. Slide Show.....	12
3. Auto Off.....	13
4. LCD Contrast.....	13
5. Backlight.....	14
6. Display Clock.....	14
7. Set Clock.....	15
8. Delete.....	16
9. Exit.....	17
<b>E. Accessories</b> .....	17

## A. About your Player

o Appearance and Buttons (See picture)





USB jack: Charge player, Download pictures

Up: Previous

Menu: Function Control Key

Down: Forward

- Battery: 3.7V Lithium ion rechargeable battery  
It will recharge automatically when connect to computer, you can see the battery icon on the top - left of the display.  
Full:   
Empty: 

## **B. Function Description**

- This electronic digital image player supports bmp and jpg formats only.
- The player also has a clock, it can be set to display.
- The player comes with six default images, but more can be added.

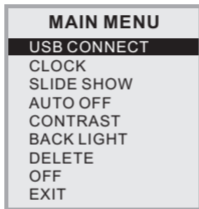
### **Browse Pictures**

- After power on, it will display pictures automatically.
- Press UP or DOWN buttons to display the previous or next photo.
- You can view the pictures as a slide show, and by using the on screen menu, you can also set the interval between the slides.

### **C. Panel Menu Function Introduction:**

Enter Menu:

1. Press Menu Key, and the menu screen will appear.



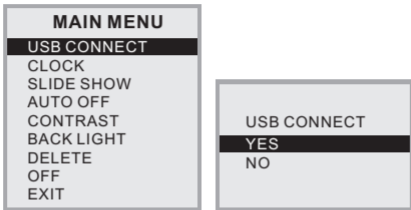
Press the up or down buttons on your player to navigate through the menu options and press the Menu button to select the desired option.

### **D.Mode Functions and Basic Operation**

1. Connect to Computer

A. After connecting the player to the computer with the supplied USB cable, press menu key and select "USB Connect"

B. Press menu to select Yes, to enable the connection.

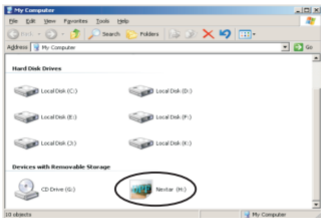


C. The player will enter Computer Mode, You will see following screen from the player.





The pre-loaded program will launch itself ,you can see the Nextar program in “my computer” folder.  
This will take a little longer the first time you connect it as the player installs itself on your computer.

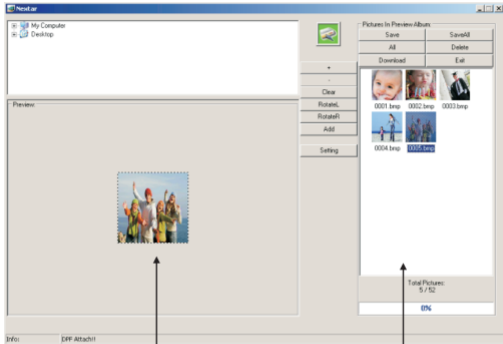


Once double Click the disk of Nextar , it will open the window for updating the pictures in the player.

## All Models:

### 1. Transferring pictures from Computer

A. When the Nextar Software opens, you will see this screen.



This side shows the navigation of images on your computer

This side shows images installed on your digital photo keychain

To add the pictures to the Digital Photo KeyChain which you desire, Please using the top of the left part to find the pictures in your computer, To select the picture by clicking it's name, then it will display on the bottom of the left part, then you can edit it and add to you Digital Photo KeyChain.

Edit the pictures before add to the Digital Photo KeyChain:

1. "+": Increase the size of the image view in left preview pane(zoom in)
2. "-": Decrease the image size(zoom out)
3. "Clear" / "Rect": Once click the "Clear" button, the picture will be stretched to fix the full screen of the Digital Photo KeyChain, and the button is changed to "Rect", Once Click the "Rect" button, the picture will be back to the original scale.
4. "RotateL": Rotate image to the left by 90 degrees
5. "RotateR": Rotate image to the right by 90 degrees
6. "Add": Moves image from left preview to player list, But it still not transfer into the Digital Photo Keychain before press Download button for approval.
7. "Setting": Once Click this button, it will open a window, you can change the font color and background color here for the Menu display in the Digital Photo Keychain.

The right part of window is showing the pictures in the Digital Photo KeyChain, You can deal with the pictures by the buttons on the top side.

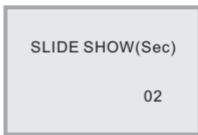
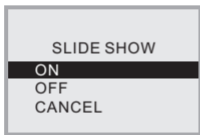
1. "Save": You can save the picture which was selected to your computer.
2. "Save All": You can save all the pictures in right parts to your computer.
3. "All": Select all the pictures in right part.
4. "Delete": Remove the picture which was selected from the right part, it still in the Digital Photo Keychain before press "download " button for approval.
5. "Download": You have added or deleted the pictures in the left part, Once click the button, it will synchronize to the Digital Photo KeyChain.
6. "Exit": Exits the program.

#### **IMPORTANT NOTE:**

**Disconnecting the USB cable during reading of images on or downloading images to the player may result in irreparable damage to the player's flash memory and voiding the warranty.**

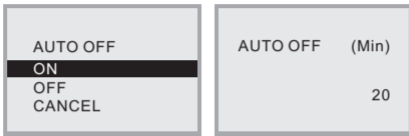
## 2. Slide Show

Press up or down buttons to select SLIDE SHOW, and press menu key to enter, select ON to adjust the slide show time.



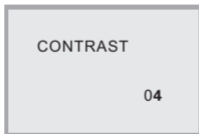
- Select Auto Slide to have the player display images in an automatic slide show. Adjust the time between images by pressing UP or DOWN buttons. Press Menu again to confirm and again to exit.

### 3. Auto Off



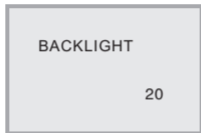
- Select Auto Off and press MENU to enter it. To set up the auto off time by pressing UP and DOWN to adjust the time.

### 4. Contrast



- Select LCD Contrast and press MENU to enter it. Press UP and DOWN to adjust the LCD contrast from 01 to 06.

## **5. Backlight**



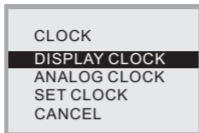
- Select Backlight and press MENU to enter it. Press UP and DOWN to adjust the brightness of the backlight from level 01 to level 21.

## **6. Display Clock**



- To display the time, select Clock Disp and press Menu key.

## 7. Set Clock



- Select **CLOCK** and Press Menu to Enter
- There are 2 Modes Clock Displays, Please Select **DISPLAY CLOCK** or **ANALOG CLOCK**.
- To set the time on your player, select **SET CLOCK** and press Menu key.

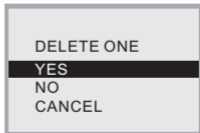
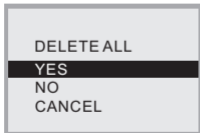
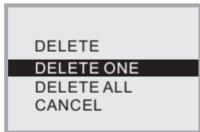


- Press menu key to select the date/time/week, and then use the up/down buttons to select the correct date/time/week. Press **MENU** to exit this function.



## 8. Delete

- Press MENU, then press UP or DWON buttons to enter DELETE screen, there are two modes: DELETE ONE and DELETE ALL, use UP or DWON buttons to select "DELETE ONE" and press "YES" to delete the current display picture, if select "DELETE ALL" and press "YES", it will delete all the pictures in the Digital Photo Keychain. You also can select "CANCEL" to exit this function.



## **9. Exit**

- Select Exit, to return to the picture - display state.

## **E. Accessories**

- USB Cable
- Key Chain
- User's Manual
- Product Registration Card
- Warranty Card

## FCC Compliance

This device complies with Part 15 of the FCC Rules. Operation is subjected to the following two conditions: (1) This device may not cause harmful interference, and (2) this device must accept any interference received, including interference that may cause undesired operation.

Note: This equipment has been tested and found to comply with the limits for a Class B digital device, pursuant to Part 15 of the FCC Rules.

These limits are designed to provide reasonable protection against harmful interference in a residential installation. This equipment generates uses and can radiate radio frequency energy and, if not installed and used in accordance with the instructions, may cause harmful interference to radio communications. However, there is no guarantee that interference will not occur in a particular installation. If this equipment does cause harmful interference to radio or television reception, which can be determined by turning the equipment off and on, the user is encouraged to try to correct the interference by one or more of the following measures:

1. Reorient or relocate the receiving antenna.
2. Increase the separation between the equipment and receiver. Connect the equipment into an outlet on a circuit different from that to which the receiver is connected.
3. Consult the dealer or an experienced radio/TV technician for help.

Nextar™ is a trademark of Nextar (Hong Kong) Limited

Nextar may find it necessary to modify, amend or otherwise change or update this manual. We reserve the right to do this at any time, without any prior notice. All specifications and features are subject to change without notice. All screen shots shown are simulated and may not represent the actual screen on production units sold to consumers.

For instruction manuals, updated drivers or other information, be sure to visit our website at:

[www.Nextar.com](http://www.Nextar.com)

Or write us at:

©Nextar, INC. AND ITS AFFILIATES

1661 FAIRPLEX DRIVE.

LA VERNE, CA 91750, USA

All products distributed by Nextar, Inc. unless otherwise indicated

Made in China

© 2008 Nextar (Hong Kong) Limited. Nextar is a trademark and service mark of Nextar (Hong Kong) Limited. All other brand names, trademarks and service marks are property of their owners.

## Free Manuals Download Website

<http://myh66.com>

<http://usermanuals.us>

<http://www.somanuals.com>

<http://www.4manuals.cc>

<http://www.manual-lib.com>

<http://www.404manual.com>

<http://www.luxmanual.com>

<http://aubethermostatmanual.com>

Golf course search by state

<http://golfingnear.com>

Email search by domain

<http://emailbydomain.com>

Auto manuals search

<http://auto.somanuals.com>

TV manuals search

<http://tv.somanuals.com>