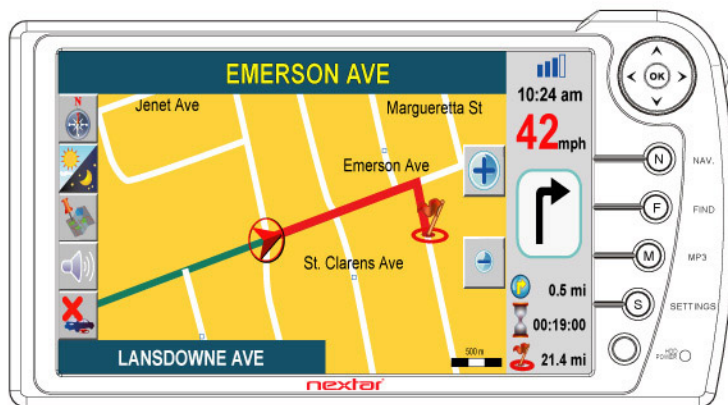


Voice Prompt  
English/French

Large 7" Digital  
Touch-screen  
Color Display

MN2707



INSTRUCTION MANUAL

nextar

**AUTOMOTIVE NAVIGATION SYSTEM (GPS)**

Download from [www.Somanuals.com](http://www.Somanuals.com). All Manuals Search And Download.

## Thank You For Purchasing A Nextar Navigation System

The Nextar MN2707 Global Positioning System (GPS)-MP3 player is a state-of-the-art navigation and entertainment system. With the latest in GPS satellite navigation and MP3 digital audio playback capabilities, this unit is a great companion for any traveler.

The Global Positioning System is a series of satellites orbiting the earth. These satellites transmit very accurate (within several hundred feet) location information to special receivers on the surface of the planet. The receivers, like the MN2707, can translate the special signals from the GPS satellites into information that allows user to navigate almost anywhere on the planet (as long as the correct maps have been downloaded to the unit).

The MN2707 features a number of unique functions:

- A bright, sharp 7" touch sensitive LCD display
- 480x272 pixel resolution for easy readability
- Blue backlit keyboard for easy use in low light or dark conditions
- Stereo speakers for great sounding MP3 playback and voice direction prompts
- MP3 digital audio playback support
- A friendly, easy to use interface
- A large 40GB hard drive to hold maps, MP3 files, addresses and more





## WARNING

Careful driving requires using multiple sources of information to determine your position. Don't rely on one source of information to know where you are



## CAUTION

When showing turn-by-turn navigation data, a GPS unit will show the shortest, most direct route to the destination. There are times when it may give directions, such as a U-turn, that may be prohibited in some locations. While navigating, a driver is responsible for noting all traffic signs and obeying all traffic laws. When following turn-by-turn directions, a driver must visibly check to be sure a clear, safe path to the destination is available.



## WARNING

When a GPS unit is used in a vehicle, the vehicle operator is solely responsible for operating the vehicle in a safe manner. Not using careful driving practices can result in an accident causing damage to property, personal injury or death.

### CARE OF YOUR GPS UNIT

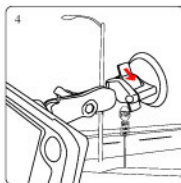
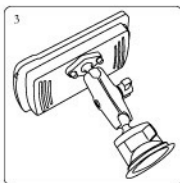
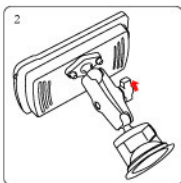
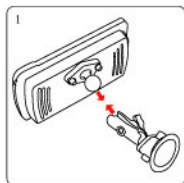
1. Keep your unit out of extreme heat, cold or moisture. Automobile interiors can get extremely hot and cold during winter and summer weather. In extreme heat, remove your GPS unit from direct sunlight. If the screen becomes difficult to read or the unit re-boots often, take the unit to a warmer or cooler environment and allow its temperature to stabilize
2. Take care to not expose your GPS unit to wet conditions or extreme moisture. Moisture can cause the unit to malfunction or possibly become permanently damaged.
3. If your unit appears to be operating incorrectly, re-booting often or freezing up – power the unit off completely and restart.

## TABLE OF CONTENTS

INTRODUCTION	2
WARNINGS AND CAUTIONS	3
SECTION 1	
Accessories and Installation	5
List of Accessories	5
Installation of Universal Mounting Bracket	5
SECTION 2	
Turning On Your Unit	6
Keypad Operation and Screen Icons	7
GPS Unit Overview	7
Display Overview	8
SECTION 3	
How To Use The Find Destination Function	9
Entering A New Address	9
Recent Destinations	12
Intersections	13
Using The Address Book	14
Searching the Points of Interest (POI) by Name	15
Searching The Points of Interest By Distance	18
SECTION 4	
How To Adjust The Settings	20
Display Setup	21
Route preferences	22
Guidance Settings	23
System Settings	23
GPS Status	24
Reset to Default Settings	24
Audio Setup	25
Device Info	25
SECTION 5	
How to update the firmware	26
How To Use The MP3 Player	27
GLOSSARY	31

## SECTION 1

### Accessories and Installation



1. Loosen the knob on the side of the clamp turning it counter clockwise. Attach it to the GPS
2. Tighten the clamp by turning the knob clockwise
3. The Nextar GPS should now be connected to the bracket, with the suction cup at the opposite end of the clamp.
4. Place suction cup on the windshield and move the clip to the right to initiate the suction. The unit should now be solidly attached to your windshield

Once the unit is in place, you can adjust the specific viewing angle by loosening the knob on the side of the clamp and adjusting the unit.

**\*\* Don't loosen the knob excessively or your unit may drop\*\***

## SECTION 2

### Turning Your Unit On



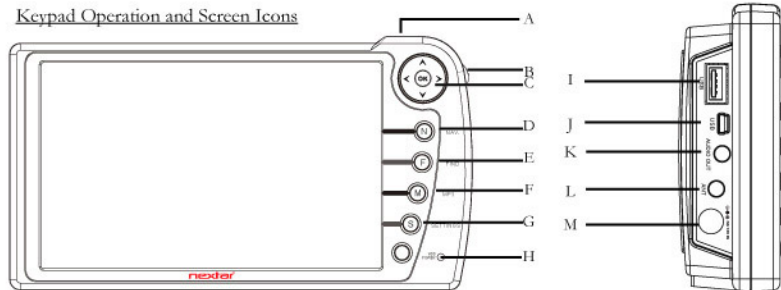
When you first power your unit on, you will see this screen. This caution is intended to remind you that driving can be dangerous and that drivers must pay careful attention to the road and other cars and pedestrians. Use good driving judgment always. The Nextar MN2707 is intended to assist you in NAVIGATING your vehicle, not DRIVING. Press  to continue.



Before you can begin using the Nextar MN2707, you must agree that Nextar can collect some information to better provide you service. This info will not be resold or otherwise used outside of Nextar. In addition, some of the maps and technology are covered by various patents and copyrights. If you agree, press  to continue. Otherwise, press  to quit.

## SECTION 2

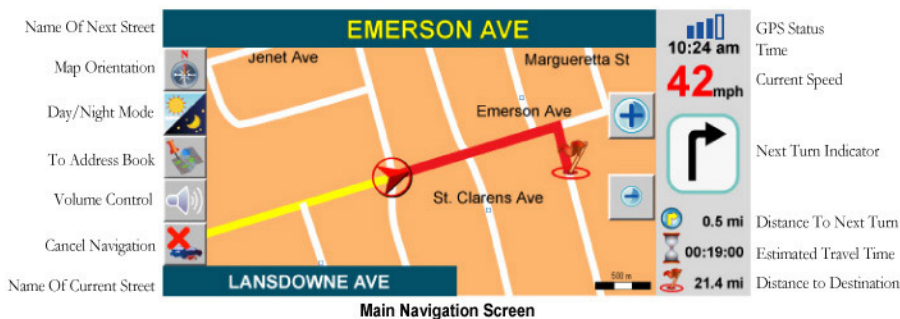
### Keypad Operation and Screen Icons



- A - **Power Button** - On top of the GPS is the power button, push this in to power on. A blue LED light will light up the GPS and the screen is now on.
- B - **Jog Wheel** - On the right side of the GPS is the Jog Wheel this will Zoom in or out on the map.
- C - **Arrow Pad** (Four Directions) and OK - Up on the right side of the screen. This will help you scroll and select through different interfaces. Pressing OK will confirm your selection.
- D - **Navigation** - Labeled N. This will put you into Navigation mode. Press any point on the map area and the device will set this point as the center of the display. See map below.
- E - **Find** - Labeled F. Pressing this button will take you to the Find Destination UI.
- F - **MP3** - Labeled M. Pressing this button will take you to the Music Operation mode.
- G - **Settings** - Labeled S. Pressing this button will take you to the Settings mode.
- H - **HDD Power** - Hard Disk Drive reads and writes data to the hard drive located inside your GPS. When you press on a key to do an action this light will blink showing the work in progress.
- I - **Audio Output** - Connect headphones or other external audio devices to listen to voice prompt and MP3s.
- J - **Mini USB** - Connect to your PC to upload map data or MP3 songs.
- K - **USB Connector** - Universal Serial Bus connect with your USB extension cable to other peripherals.
- L - **DC In** - Connect the DC adapter / Car lighter here to power up the GPS unit.

## SECTION 2

### Keypad Operation and Screen Icons



\*\*Note: The Icons on the screen will automatically disappear while the unit is idle. Simply touch the screen anywhere to reactivate the icons

The Red Arrow will indicate your current position and the orientation of the map.

- Map Orientation Indicators - Pressing this icon will toggle between each other. "N" indicates that the map is oriented to that North is always at top. "D" indicates that your driving directions will always be face up, the map automatically rotates according to your vehicle.
- Zoom In and Zoom Out keys (+ and -) – pressing these icons will zoom the map in for more detail, or zoom out for less detail but more map area will be displayed



## SECTION 3

### How To Find Your Destination

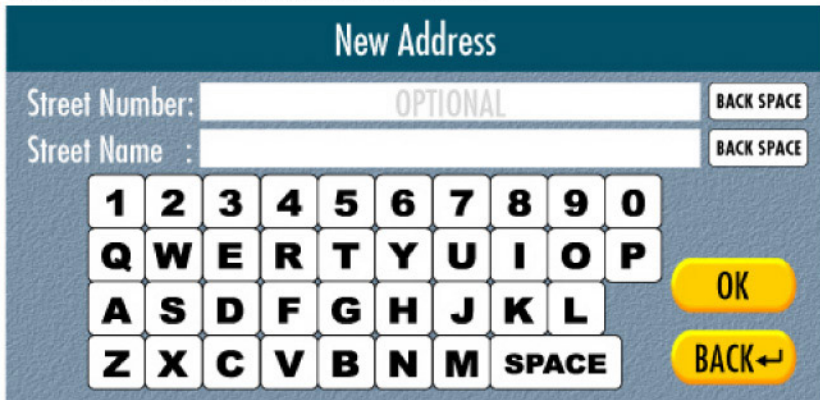
This section will describe how to use the Nextar MN2707 to navigate. There are several different navigation methods:

- a) Entering a new address
- b) Entering an intersection
- c) Using recently found addresses
- d) Using an address stored in your address book
- e) Searching by a point of interest (POI) name
- f) Searching by a point of interest (POI) distance



#### NEW ADDRESS

Select "New Address" by touching the button on the screen



## SECTION 3

To search for a new address from you current location:

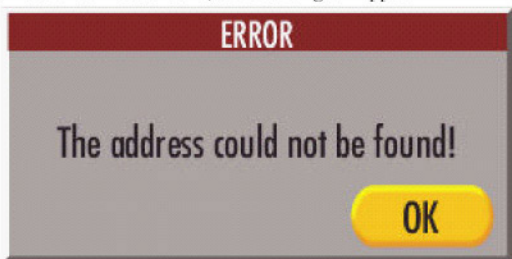
Using the keypad on the display, type in the desired destination street number (optional) and street name


Press the  button to continue

NOTE:

- 1) Be sure to use at least 3 characters in the name fields to narrow the search and shorten the search time
- 2) The backspace key will delete the last character on the line

If the address information cannot be found, the following will appear:



In this case, press  and you will return to the address entry screen to re-enter the address information.

Select Province & City

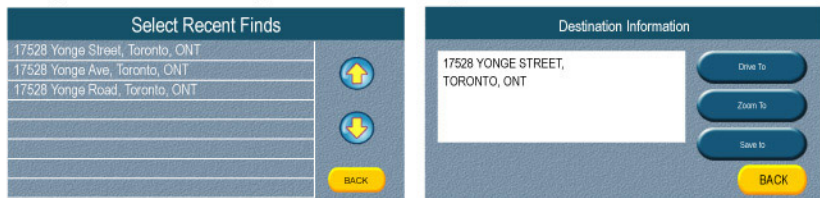
- You do not have to enter the city name if the name is unknown
- GPS will automatically detect the current province.

Press "CHANGE" button if you want to change to another province/state.



## SECTION 3

Once your destination is found you will see the following screen:



In the Address block you will see the destination requested

**Drive To:** When you select this, the MN2707 will calculate your route from your current location to the destination, and then it will display the map (as shown previously)

**Zoom To:** Press this key to see where the final destination is located on the map. This is useful if you ever need to find a POI at your destination.

**Save To:** Use this to save this destination to the Address Book for later use. The address book screen appears below:



Enter a name for this address and press save to save to your address book. This will allow you quick access to this destination and route in the future.

After pressing "Save" you will return to the destination information screen

## SECTION 3

### RECENT FINDS

As you begin to use your Nextar GPS system, a database of addresses that you've entered will be automatically generated by the MN2707. This is especially useful if you navigate to certain places on a regular basis.

From the main destination screen:



Select "Recent Finds" to access the following screen:



From this screen, select your desired location. If you don't see it on the first screen, press the "Page Up" or "Page Down" buttons to scroll to additional locations.

Note: Pressing "Back" will return you to the first "Find Destination" page

## SECTION 3

### RECENT FINDS (cont.)

Once you select a location from the recent finds list, you will go to the “Destination Information” screen (see page 11). From here you can Drive To, Zoom To, and Save using the same instructions as described on page 11.

### INTERSECTION

This feature allows you to enter two street names, and the GPS unit will locate where these two streets intersect each other.

From the Find Destination screen, select “Intersection”



You will then see the following screen:



## SECTION 3

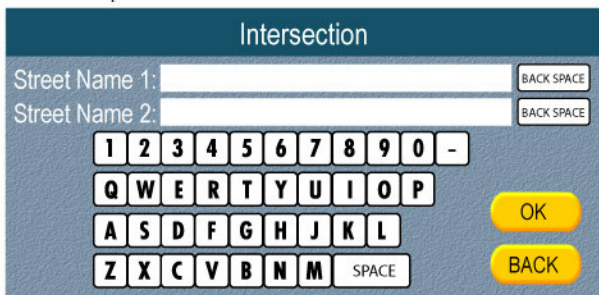
### INTERSECTION (cont.)

Street Name 1: Press in the field area and using the keyboard, enter the first street name.

Street Name 2: Press in the field area and using the keyboard, enter the second street name.

\*\*Note: Backspace key will delete the last character typed in the field

\*\*Note: Enter complete street names to shorten the search time



After the street names have been entered, press “OK”

You will then be taken to the “Destination Information” screen (page 11) where you can now view your route and save this destination to you address book.

\* Please enter the complete street names to shorten search time.

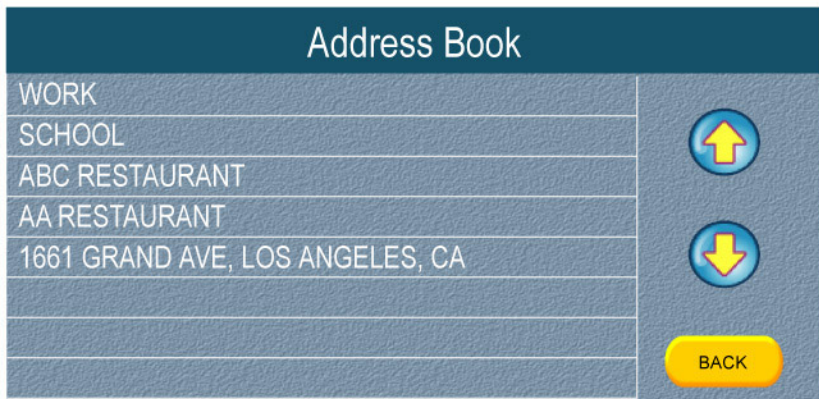
### ADDRESS BOOK

The address book is a great way to save not only destination addresses, but also information about that destination. From the “Find Destination” screen, select “Address Book”



### SECTION 3

ADDRESS BOOK (cont.)



These are destinations in your address book that you have previously saved. These addresses can be saved from all the previous navigation alternatives (New Address, Recent Finds, Intersection).

From this screen, select your desired location. If you don't see it on the first screen, press the "Page Up" or "Page Down" buttons to scroll to additional locations.

Once an address is selected, you will see the same screens as page 11.

Note: Pressing "Back" will return you to the first "Find Destination" page

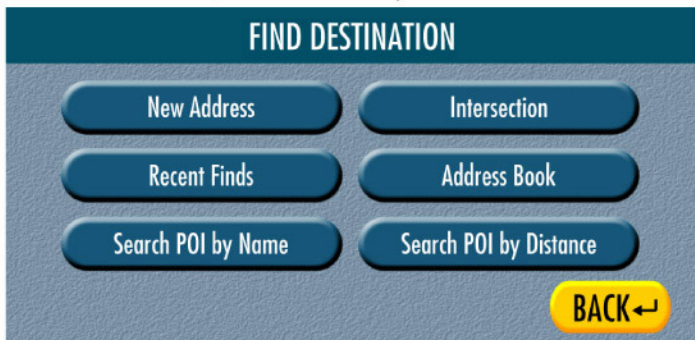
#### POINT OF INTEREST (POI) BY NAME

Searching by Point of Interest (POI) name will allow you to search for a variety of points of interest like hospitals, hotels, gas stations, tourist attractions etc. In addition, the Nextar MN2707 will show POI's near your present location.

## SECTION 3

### POINTS OF INTEREST BY NAME (cont.)

From the Find Destination screen, select “ Search POI By Name”



The following screen will then appear:

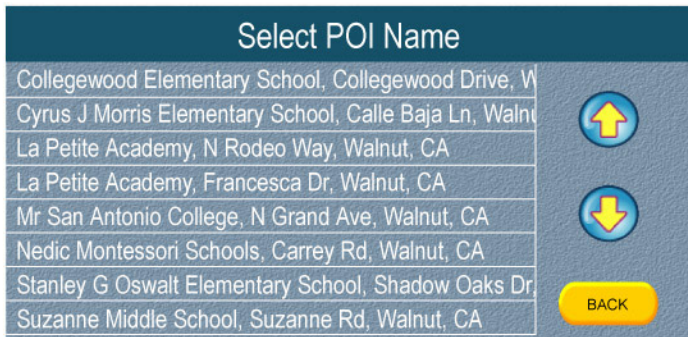


After selecting a category, you will be presented with a screen listing the various categories of points of interest that are in the map database. Select a category and the next screen will present all the POI in the map database for that category:



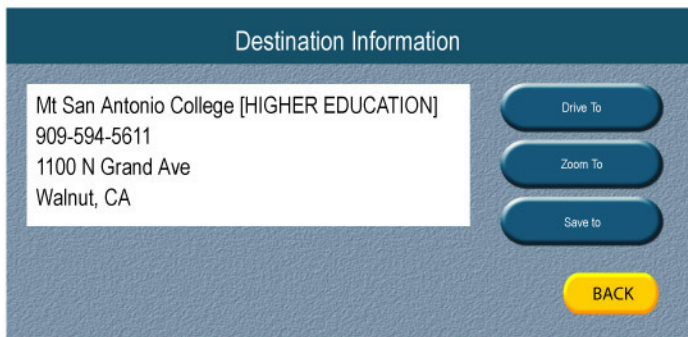
## SECTION 3

### POINTS OF INTEREST BY NAME (cont.)



From this screen, select your desired location. If you don't see it on the first screen, press the "Page Up" or "Page Down" buttons to scroll to additional locations.

Once an address is selected, you will see the following screen:



**Drive To:** When you select this, the MN2707 will calculate your route from your current location to the destination, and then it will display the map (as shown previously)

## SECTION 3

### POINTS OF INTEREST BY NAME (Cont.)

**Zoom To:** Press this key to see where the final destination is located on the map. This is useful if you ever need to find a POI at your destination.

**Save To:** Use this to save this destination to the Address Book for later use. The address book screen appears below:

### POINTS OF INTEREST (POI) BY DISTNACE

From the “Find Destination” screen, select “Search POI By Distance”



The following screen will then appear::






### SECTION 3

#### POINTS OF INTEREST BY DISTANCE (Cont.)

From the category list, select a category of POI that you are searching for. If you are not sure, select “ALL”.

Once a category is selected, you will see the following screen:

Select POI Name		
Sheraton Suites-fairplex, W Mckinley Ave	1.3 mi	
Lemmon Tree Motel, Gillette Rd	1.5 mi	
Americana Inn, E Foothill Blvd	1.9 mi	
Stardust Motel, E Foothill Blvd	2.0 mi	
Select Suites Claremont, E Foothill Blvd	2.1 mi	
Autolodge Pomona, N Garey Ave	2.2 mi	
Ganesha Motel, Hold Ave	2.2 mi	
Super Inn, Hold Ave	2.2 mi	

From the list, select the POI that you are searching for, noting the distance from your present location to the POI as indicated in the right hand column.

Once a POI is selected, you will see the same “POI Information” screen as presented in the previous section. Follow the same instructions for finding a POI by name.

It will show all POIs within 4 miles of your current location.

## PLAYING MP3 FILES

Once you have MP3 files copied to your MN2707, you are ready to play MP3 files to listen to music. Press the “M” button on the side of the unit. The following screen will be displayed:



From this screen, select the song you want to play. If you don't see the song you are looking for, use the “Page Up” and “Page Down” buttons to navigate the list of music.

NOTE: Pressing “Back” will return you to the last Map that was being used

- Play: Pressing this will play the track you selected on the screen and stop playing at the end of the song
- Play All: Pressing this will play all the tracks you have selected continuously until they have all been played.
- Stop: Pressing this will stop any track that is playing

## SECTION 4

### How To Adjust Unit Settings

When setting up your Nextar GPS, you will have the option to adjust and change a variety of system settings. These settings are intended to make the unit easier to use and to customize the way the unit looks and operates to fit your personal tastes. You will be able to adjust the following: a) Display Settings b) Route Preferences c) Guidance Settings d) System Settings e) GPS Status f) Default Settings g) Sound Settings h) Device Info

The Settings screen looks like the following, and is accessed by pressing the settings button on the right hand side of the unit:

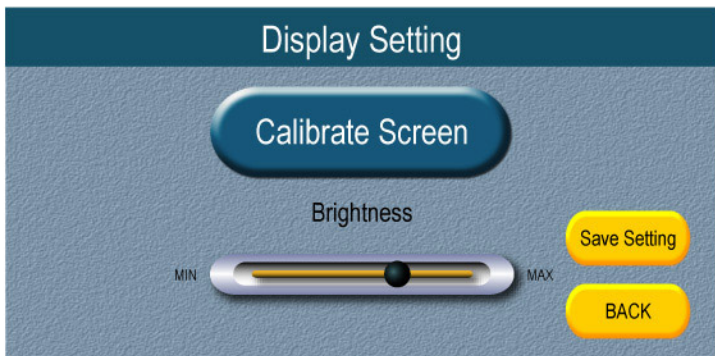




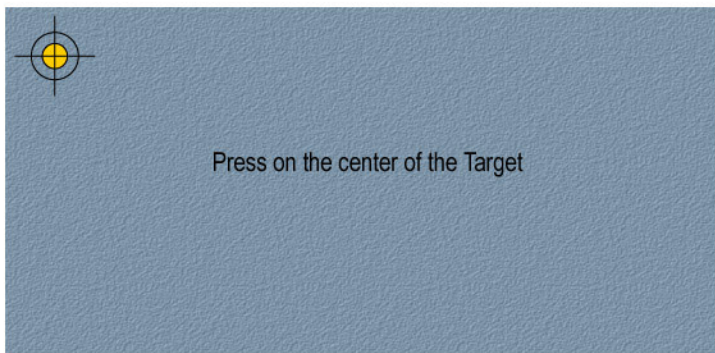
## SECTION 4

### DISPLAY SETTINGS

Pressing the “Display Setup” button on the screen will access the following screen:



Selecting “Calibrate Screen” will take the user to the calibration screen. This screen is white, with a small yellow target in the upper left corner of the screen.



The message in the center of the screen will say: “ Press on the center of the Target”. Press on the center of the target with your finger. The target will then move to the lower left of the screen. Press the target again. The target then moves to the lower right of the screen. Pressing the target again takes it to the upper right of the screen. Press the target one last time and the calibration is complete.

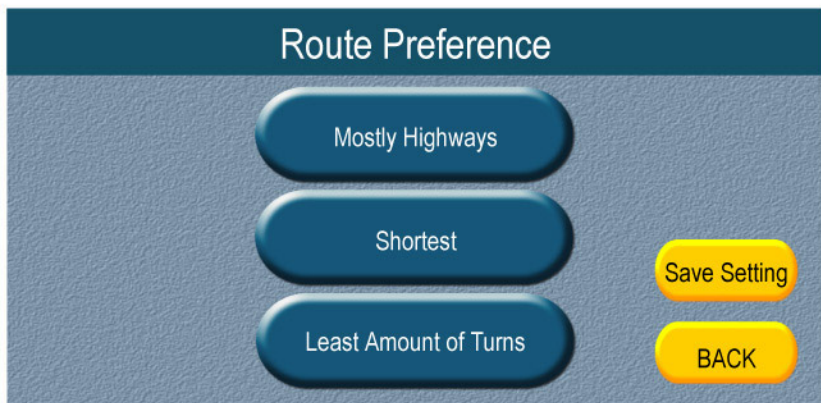
## SECTION 4

### DISPLAY SETTINGS (Cont.)

Press “Save Setting” to save this calibration. Press “Back” to return to the Settings page.

### ROUTE PREFERENCE

The route preference settings allow the user to set the default navigation used by the MN2707.



- Mostly Highways-** This default will find the fastest route to your destination. The distance may or may not be longer than the shortest route, but by using mostly highways etc. the overall trip should be the fastest (ie: take the least amount of time)
- Shortest -** This default will find the shortest distance route. It may or may not be the fastest route, but by using the most direct navigation, the overall trip distance should be the shortest (ie: least amount of miles)
- Least Amount of Turns-** This default will find the route with the fewest turns. It may or may not be the fastest or shortest route. By using a route with the fewest turns, navigation in unfamiliar areas is often easier

To save your selection, press “Save Setting”. To return to the main Setting menu, press “Back”

## SECTION 4

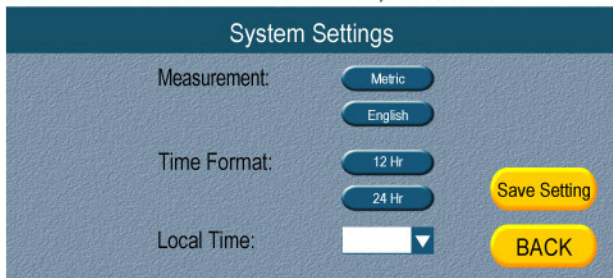
### GUIDANCE SETTINGS

This selection allows you select the language of the voice prompts. You may select English or French. This selection changes **ONLY** the voice prompt – not the text on the display.



### SYSTEM SETTINGS

This selection lets the user select the basic defaults that the system will use:



- Measurement - This default will determine what the units the distances on the map will be in. Metric will show distances in meters, English will show distances in miles
- Time Format - This default selects whether times are shown on a 12 hour or 24 hour clock. A 12 hour clock will show times from 12 am to 11:59 am and then from 12:00 pm to 11:59 pm. The 24 Hour clock will display time from 1:00 which is 1:00 am to 24:00 which is 24 hours later (12:00 am)
- Local Time - This default sets your time zone. Press the arrow to get a selection box. Press you local time zone.

To save your selection, press “Save Setting”. To return to the main Setting menu, press “Back”

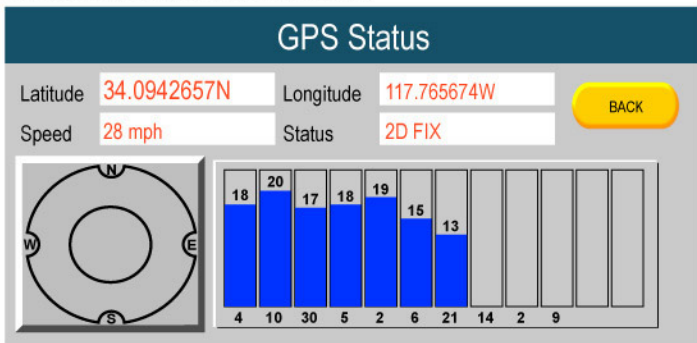


## SECTION 4

### GPS STATUS

This selection allows you to see the status of the GPS signal. The display will show your latitude, longitude, speed and whether the GPS unit has an acquired signal from the satellites.

The lower left display shows your direction on a 4 point compass. The lower right of the display will show a bar graph of the strength of the satellite signal.

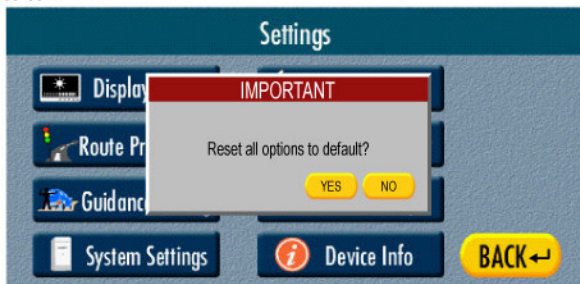


This screen is for information only to determine if your unit has acquired a satellite signal. There are no user setting on the page.

Press "Back" to return to the main settings screen.

### RESET TO DEFAULTS

This selection allows you to return the unit to it's factory setup state. If you cannot seem to undo other changes you have made, or would like to start everything over at it's default state, you have the option on this screen



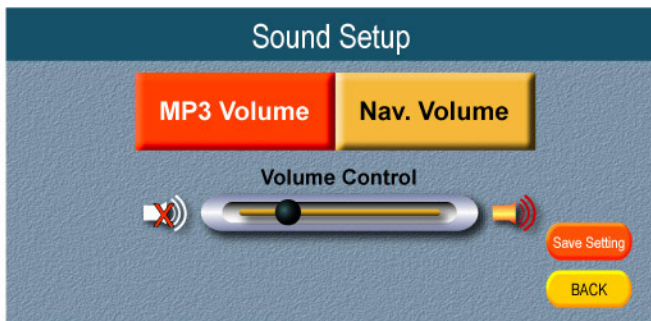
## SECTION 4

### RESET TO DEFAULTS (Cont.)

To reset, select “YES”. Pressing “NO” will return you to the main settings screen

### SOUND SETUP

The Nextar MN2707 provides both voice prompts and can play MP3 files. To adjust the volume of these audio features, use your finger to slide the adjustment left to lower the volume, and right to raise the volume. There is a control for both voice prompts and the MP3 player.



To save your selection, press “Save Setting”. To return to the main Setting menu, press “Back”

### DEVICE INFO

This selection provides you with information on the version of the unit’s firmware and the map database. This screen is for information only – there are no user adjustments.

## SECTION 5

### Updating the unit firmware

One very important feature of the Nextar MN2707 is its ability to be updated by the user. As maps and other features get updated, fixed, changed etc, these fixes are released as “firmware upgrades” by Nextar.

Here are the basic steps to update your firmware:

1. Go to [www.nextar.com](http://www.nextar.com) and navigate to the support section and look for firmware updates that are for your specific unit.

**CAUTION:** MAKE SURE THE FIRMWARE IS FOR YOUR UNIT. DO NOT USE FIRMWARE INTENDED FOR OTHER DEVICES OR GPS UNITS

2. Download the firmware to you PC. Note where you saved this file.
3. Copy this firmware file to a USB Thumbdrive.

NOTE: Thumbdrives are common today for storing and moving files between computers. For an explanation of thumbdrives, see <http://en.wikipedia.org/wiki/Thumbdrive>

4. With the MN2707 powered off, plug the Thumbdrive into the USB port on the side of the unit
5. Turn the unit on. The following screen will appear:



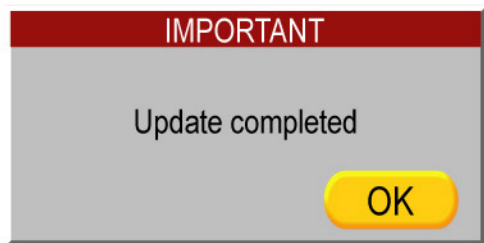
Select “YES” to begin the update process.

**CAUTION – DO NOT SHUT OFF YOUR UNIT DURING THE UPDATE. DOING SO COULD RENDER YOUR UNIT UNUSABLE.**

## SECTION 5

### Updating the unit firmware (Cont.)

1. Once the firmware update is complete and successful, the following screen will appear:



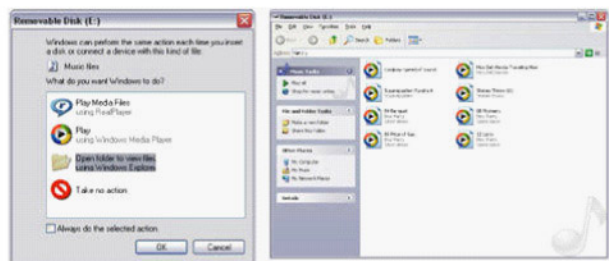
2. At this point, power off your unit, remove the thumbdrive and power your unit back on.

Your unit will now have the latest firmware.

### Using the MP3 Player

A great feature of the MN2707 is its ability to function as an MP3 player. With a large 40GB hardrive, there is room for maps and 100's of MP3 files. The instructions below will explain how to transfer MP3 files from you computer to the MN2707, and then play those files.

1. On the side of your unit there will be a port to insert the smaller end of the USB cord. Plug the cord into this connector
2. Connect the other end of the cable to the USB port on your computer (make sure the MN2707 is powered up)
3. Once connected, your computer display a Removable Disk window. A message (or similar) will displayed that states: "What do you want Windows to do?"



## SECTION 5

### Using the MP3 Player (Cont.)

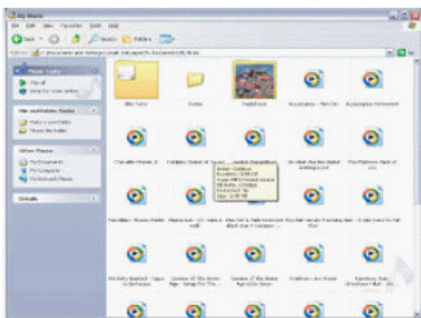
#### ACCESSING THE MN2707

1. If your computer displays the first widow (A), the MN2707 is identified as “Removable Disk E”. Select the option to view files using windows explorer. This will then allow windows explorer to view the contents of the GPS unit harddrive.
2. Once windows opens up the GPS harddrive, you will see a window similar to B above. If your GPS has never had MP3 files stored on it, this window will be empty of MP3 files. When you drag files from your PC to the GPS unit, those files will show up in this window.

**NOTE:** BE SURE TO KEEP WINDOW “B” OPEN. YOU WILL DRAG MP3 FILES FROM YOUR PC TO THIS WINDOW.

#### MOVING FILES FROM YOUR PC TO THE MN2707

1. Access the music files on your PC. Using Windows Explorer, open up the folder where your music is stored. On many computers, the default location for music is in the “My Music” folder. Your PC display may look like the one below:

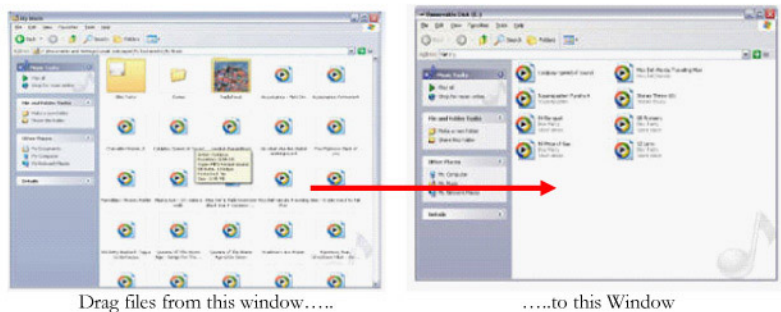


2. Select the files you want to put onto the MN2707 by selecting the file with your mouse. To select multiple files, hold down the CTRL key.
3. Once all the files are selected, click and hold your mouse on one selected file, and while holding the mouse button down, “drag” the files over to the window that you opened earlier that shows the MN2707 hard drive
4. To make your MP3 Playlist more organized, you can create folder on MP3, which let you sort the songs easily

## SECTION 5

### Using the MP3 Player (Cont.)

#### MOVING FILES FROM YOUR PC TO THE MN2707 (Cont.)



When you are done moving files, close all windows and remove the USB cable from your PC and the MN2707

This concludes the instructional part of this instruction book. We hope you enjoy this Nextar product. For any questions, assistance or product information please go to our website:

[www.Nextar.com](http://www.Nextar.com)

## GLOSSARY

### *Address Book*

A list of previously searched destinations & locations registered manually

### *Antenna*

That part of the GPS receiver hardware which receives (and sometimes amplifies) the incoming L-Band signal. Antennas come in all shapes and sizes, but most these days use so-called "microstrip" or "patch" antenna elements. The geodetic antennas, on the other hand, may use a "choke-ring" to mitigate any multipath signals.

### *Current Location*

The present location of your car; your current location is shown on the map by a red triangle mark.

### *Default Setting*

A factory setting which applies when you first switch on the system; you can change default settings to suit your own needs in the settings menu

### *Destination*

A location you choose as the end point of your journey.

### *Global Positioning System (GPS)*

A system for providing precise location which is based on data transmitted from a constellation of 24 satellites

### *GIS (Geographic Information System)*

A computer based system that is capable of collecting, managing and analyzing geographic spatial data. This capability includes storing and utilizing maps, displaying the results of data queries and conducting spatial analysis.

### *Latitude*

A north/south measurement of position perpendicular to the earth's polar axis.

### *Longitude*

An east/west measurement of position in relation to the Prime Meridian, an imaginary circle that passes through the north and south poles.

## *MP3*

Stands for "MPEG-1 Audio Layer-3." It is the most popular compressed audio file format. An MP3 file is about one tenth the size of the original audio file, but the sound is nearly CD-quality

## *Point of Interest (POI)*

Point of interest; any of a range of locations stored in the data, such as bank, shopping, restaurant, gas station etc.

## *Position*

The latitude, longitude, and altitude of a point. An estimate of error is often associated with a position

## *USB CABLE*

Universal Serial Bus (USB) provides a serial bus standard for connecting devices, usually to a computer. Here, the USB Cable is the connection between GPS and Computer.

## *USER INTERFACE (UI)*

The user interface is the aggregate of means by which people interact with a particular machine, device, computer program or other complex tool. The user interface provides means of: (i) Input – allowing the users to control the system. (ii) Output – allowing the system to inform the users.

## *Voice Prompt*

The giving of direction by a recorded voice while in guidance mode



No part of this manual may be copied, republished, reproduced, transmitted or distributed in any way without prior written consent of Nextar, Inc. Any unauthorized distribution of this manual is expressly forbidden.

© 2008 Nextar (Hong Kong) Limited. Nextar is a trademark and service mark of Nextar (Hong Kong) Limited. All other brand names, trademarks and service marks are property of their owners.

Nextar may find it necessary to modify, amend or otherwise change or update this manual. We reserve the right to do this at any time, without any prior notice. All specifications and features are subject to change without notice. All screen shots shown are simulated and may not represent the actual screen on production units sold to consumers.

Mapping database copyright © 2005 NAVTEQ™. NAVTEQ ON BOARD™ is a trademark of NAVTEQ™



For free instruction books, information on this product its operation and accessories, visit us on the web at:

[www.nextar.com](http://www.nextar.com)

Or write to us at:

Nextar Inc.  
1661 Fairplex Dr.  
LaVerne, CA USA 91750

Copyright ©2005 Nextar  
All Rights Reserved

## FCC Compliance

This device complies with Part 15 of the U.S. Federal Communications Commission (FCC) rules. Operation is subject to the following two conditions: (1) this device may not cause harmful interference, and (2) this device must accept any interference received, including interference that may cause undesired operation.

Changes or modifications not expressly approved by the manufacturer could void the user's authority to operate the equipment.

### Note:

This equipment has been tested and found to comply with the limits for a Class B digital device, pursuant to Part 15 of the FCC Rules. These limits are designed to provide reasonable protection against harmful interference in a residential installation. This equipment generates, uses and can radiate radio frequency energy and, if not installed and used in accordance with the instructions, may cause harmful interference to radio communication. However, there is no guarantee that interference will not occur in a particular installation. If this equipment does cause harmful interference to radio or television reception, which can be determined by turning the equipment off and on, the user is encouraged to try to connect the interference by one or more of the following measures:

- Reorient or relocate the receiving antenna.
- Increase the separation between the equipment and receiver.
- Connect the equipment into an outlet on a circuit different from that to which the receiver is connected.
- Consult the factory customer service department for help.

*Governing Law.* The above terms and conditions shall be governed by the laws of the Illinois, without giving effect to (i) its conflict of laws provisions, or (ii) the United Nations Convention for Contracts for the International Sale of Goods, which is explicitly excluded. You agree to submit to the jurisdiction of Illinois for any and all disputes, claims and actions arising from or in connection with the Data provided to you hereunder.

*Government End Users.* If the NAVTEQ Data is being acquired by or on behalf of the United States government or any other entity seeking or applying rights similar to those customarily claimed by the United States government, (i) for acquisitions conducted by the Department of Defense, the NAVTEQ Data is licensed with "Limited Rights" shall be marked with the "Limited Rights Notice" set forth at DFARS 252.227-7013(b)(3), Technical Data-Noncommercial Items, and NAVTEQ Data delivered or otherwise furnished with "Limited Rights" shall be marked with the "Limited Rights Notice" set forth at DFARS 252.227-7013(f)(3), and shall be treated in accordance with such Notice and; (ii) for civilian agency acquisitions, the NAVTEQ Data is licensed in accordance with the rights set forth at FAR 52.227-14(g)(1), Rights in Data-General (Protection of limited rights data and computer software). In the event that the Contracting Officer requires the delivery of limited rights NAVTEQ Data that has been withheld or would otherwise be withholdable in accordance with FAR 52.227-14(g)(1), the NAVTEQ Data is licensed with "Limited Rights" as set forth in the "Limited Rights Notice" at FAR 52.227-14(g)(2) (Alternate II), which shall be affixed to the NAVTEQ Data and the NAVTEA Data shall be treated in accordance with such Notice (which shall be marked on any reproduction of these data, in whole or in part).

If the Contracting Officer refuses to use either of the licenses cited in (i) or (ii), herein, the Contracting Officer must notify NAVTEQ prior to seeking additional or alternative rights in the NAVTEQ Data.

## Free Manuals Download Website

<http://myh66.com>

<http://usermanuals.us>

<http://www.somanuals.com>

<http://www.4manuals.cc>

<http://www.manual-lib.com>

<http://www.404manual.com>

<http://www.luxmanual.com>

<http://aubethermostatmanual.com>

Golf course search by state

<http://golfingnear.com>

Email search by domain

<http://emailbydomain.com>

Auto manuals search

<http://auto.somanuals.com>

TV manuals search

<http://tv.somanuals.com>