



nextar[®] 

**MA791 MP3/MP4 Digital Audio/Video Player
Instruction Manual**

Table of Contents

Instructions.....	1
Precautions	2
System requirements	4
System Requirement of MP3 Player:	4
Introduction	5
Features	5
Charging the Battery	6
Connection and Downloading	7
Connect to PC	7
Downloading files.....	7
Downloading DRM10 Files	8
Remove from USB Port	12
Basic Operation.....	14
Buttons	14
Power On/Off Player	15
Reset the Player.....	15
Operation in Main Menu.....	15
Operation in	

Submen.....	16
How to Use the MP3 Player	17
Operation in Music/Voice Mode.....	17
Operation in Movie mode.....	19
Operation in Photo Mode	20
Operation in E-Book Mode	20
Operation in Delete Mode	21
Operation in Voice Record/FM Record Mode.....	22
Setting Up the Player.....	23
USB Mode.....	23
Time	23
Power.....	23
Language	24
Display	24
Record.....	24
Sys Tools.....	24
Hold Time	25
Warnings.....	25

Low Battery	25
No File.....	25
Key Locked	25
Device Full	26
Troubleshooting	26
Technical Specifications	27

Instructions

- (1) We try to ensure the correctness and completeness of this manual, but mistakes and omissions may still exist.
- (2) Our company is not responsible for any data loss caused by malpractice of software, wrong repair or other accident, or any other indirect loss which may occur.
- (3) Revision to the software or hardware or user's manual is not subject to further notification, and our company reserves the final interpretation right to this manual.
- (4) Do not press on the surface of the screen or use the buttons with undue force, so as to avoid damage to the player.

Precautions

- (1) Do not use this player when driving, riding or operating any other vehicles as it may lead to traffic accidents. Also avoid walking on the road while listening with high volume. Please pay special attention or stop using the player in places with potential hazards.
- (2) Before powering off the player, please plug in the earphone. This will help to prevent damage to the earphone as well as the player. Turn off the player when you are not using it.
- (3) Keep the player clean. Do not place it near a heat source or in direct sunlight. Keep it out of dusty, or damp places.
- (4) If the surface of the player becomes dusty, clean it with a soft, slightly dampened cloth. Do not use alcohol or diluted detergent.
- (5) Do not use the player in extremely dry conditions so as to avoid electrostatic discharge.
- (6) Please make sure that the player will not be disconnected during formatting or uploading and downloading so as to avoid program mistakes.
- (7) When the player is used as mobile disk, make sure to read and write files using correct methods. Misuse may lead to the loss of data, for which the company cannot be held responsible.
- (8) As the software provided by the original equipment manufacturer has the optimum flash storage speed, all players with memory less than 128MB cannot be formatted as FAT-32 in the operating system.



Attention: Because of the different memory calculating methods and the fact that the player software is stored in the device's flash memory, there is some difference between the player's stated capacity and its actual capacity. The actual capacity of the flash memory can be somewhat less than the stated memory capacity. This is normal. Because the firmware takes up a certain amount of space in the device's flash memory, and depending on the size of the memory, the player will have different flash memory capacity. Please refer the table below for more details.

Stated capacity	Real capacity range	Free capacity range after firmware is installed
128MB	122MB~128MB	69MB~127MB
256MB	244MB~256MB	185MB~255MB
512MB	488MB~512MB	417MB~511MB
1GB	953MB~1000MB	858MB~999MB
2GB	1907MB~2000MB	1765MB~1999MB
4GB	3815MB~4000MB	3577MB~3999MB

System requirements

System Requirement of MP3 Player:

Microsoft ® Windows 98SE/2000/ME/XP

CPU series with Pentium 200MHZ or above

USB port

120MB hard disk free space

CD-ROM driver


Introduction



Features

- (1) Supports formats such as MP3 WMA WAV MTV JPEG BMP TXT.
- (2) Movie format: MTV.
- (3) Photo preview: JPEG BMP;
- (4) E-book: .TXT
- (5) Voice record/ FM record
- (6) ID3 tag/Lyrics display
- (7) 1.8" TFT color display
- (8) Rechargeable battery(310HA)
- (9) Support DRM10

Charging the Battery

This product uses a built-in rechargeable Lithium-ion battery. You can connect the MP3 player to your PC or use the USB adapter (if any) to charge the battery.

A battery icon  will be displayed in the upper right corner of the screen. The following pictures indicate the charging status of the battery:

- (1) When the battery is charging, the icon will switch between an empty battery to a full one to indicate the process: .
- (2) When the battery is finished, and is fully charged, the icon will look as follows: .
- (3) The player will automatically shut off when the battery is dead and needs to be recharged. In this case, all settings will be saved.
- (4) Power saving mode: user can define the time off mode, such as stop off, sleep off, or backlight off to save power.

Note: The MP3 player only accepts the standard USB 2.0 output voltage and current to charge the built-in Lithium-ion battery. USB provides 5 Volts and up to 500 mA of current. If the charging voltage and current are outside of this range, it will damage the battery and the MP3 player, and the warranty will be voided. Please verify the output voltage and current of the USB port on your PC or USB adapter before charging this player. If you find that the screen of the player is blinking when using the USB wall adapter, please use the PC USB port to charge the player instead of the USB wall adapter.

Connection and Downloading

Connect to PC

Plug the attached USB cable into your PC and connect the other end to the MP3 player.

Press **Play** ▶ / || to switch the USB mode between MSC mode and MTP mode.

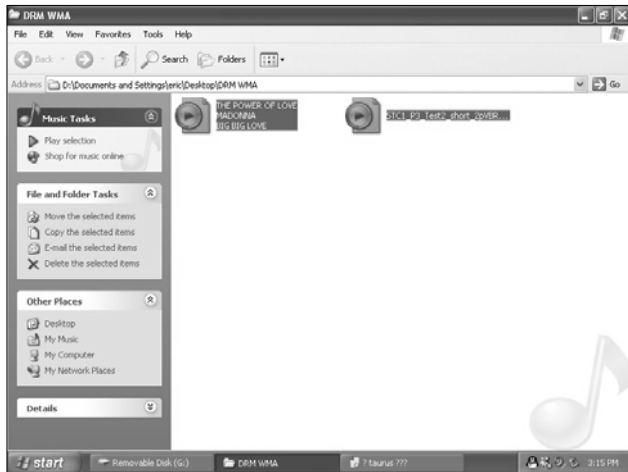
Downloading files

When you have connected the player to your PC, select the desired files then right-click and select Copy.

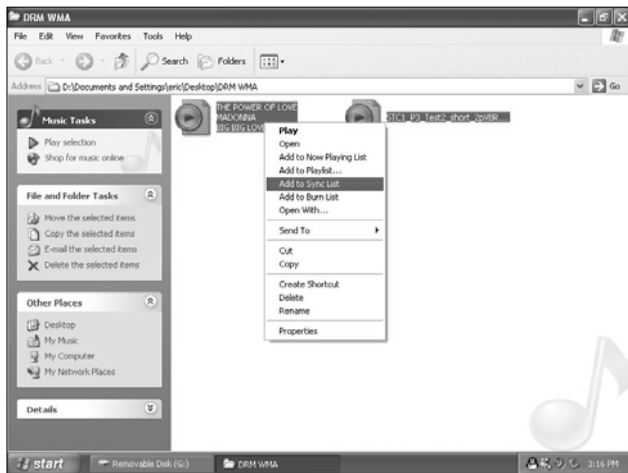
You can now paste them into the player by right-clicking on the player and selecting Paste.

Downloading DRM10 Files

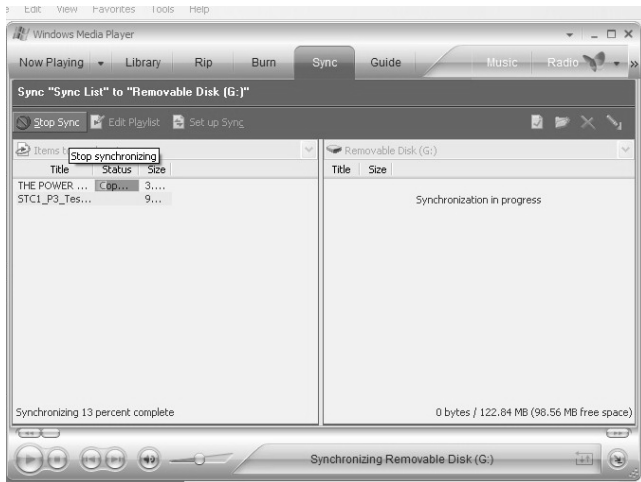
- (1) Choose the desired WMA files with DRM.



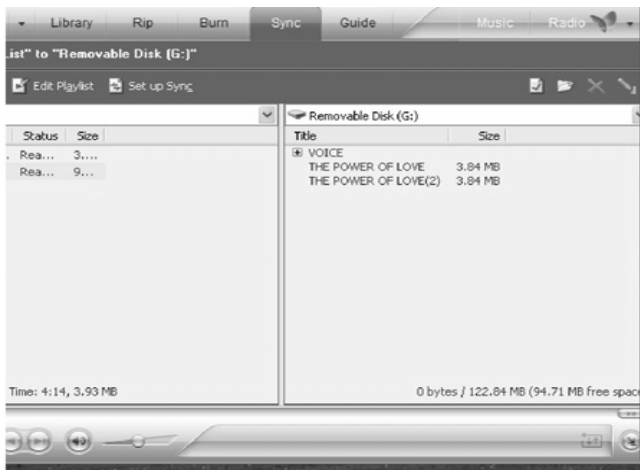
- (2) Right-click and select **Add to sync list**.
- (3) In the open window, select **Sync** option.



- (4) In the **Sync** window, choose the desired WMA files with DRM, then right-click and select **Removable disk**.



- (5) Click **Start sync** to transfer the WMA files with DRM to player.



Remove from USB Port

- (1) Double-click the eject icon to safely disconnect your player from the PC.



- (2) In the **Safely Remove Hardware** dialog, click **Stop**.



- (3) In the **Stop a Hardware device** dialog, click **OK**.



- (4) When the screen displays the **Safe to Remove Hardware** balloon in the bottom right corner, the player can be safely disconnected from PC.



Basic Operation

Buttons



- | | | | |
|---|--------------------|----|---------------|
| 1 | Play ▶ / button | 7 | FUNC button |
| 2 | V+ button | 8 | RESET |
| 3 | V- button | 9 | Microphone |
| 4 | Previous ◀◀ button | 10 | Earphone jack |
| 5 | Next ▶▶ button | 11 | USB port |
| 6 | Power button | | |

Power On/Off Player

- (1) Press and hold the Power button for about 2 seconds to turn on the player when the player is off,
- (2) Press and hold the Power button for about 2 seconds to turn off the player when the player is on.

Reset the Player

With a pen, press and hold the **RESET** button to reset the player; the player will shut itself off.

Operation in Main Menu

- A. Press **Previous** or **Next** to navigate between the menu options.
- B. Press **Play** ▶ / || to confirm the selection.



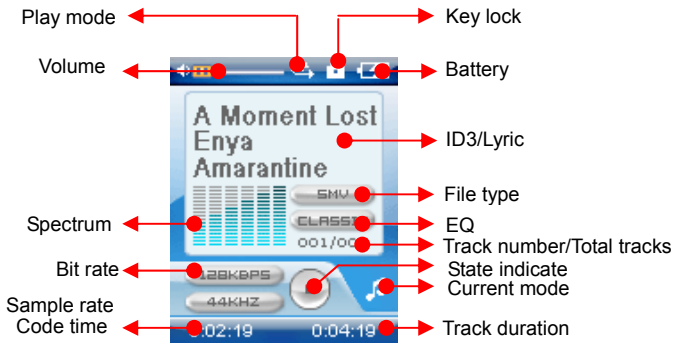
Operation in Submenu

- A. Press **V+** or **V-** to navigate between the options.
- B. Press **Previous** to return to the parent menu.
- C. Press **Next** to enter to the submenu and confirm a selection.
- D. Press and hold the **Play ▶ / II** button to enter the Main menu.

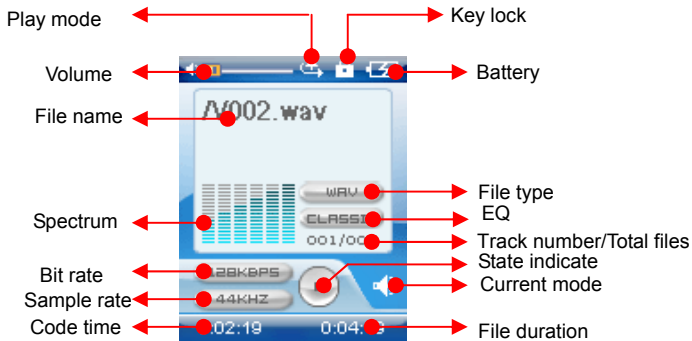


How to Use the MP3 Player

Operation in Music/Voice Mode



Music mode interface



Voice mode interface

- A. Press **Play ▶ / II** to change mode between the Preset and Manual mode. Press and hold **Play ▶ / II** to exit FM mode and open the main menu.
- B. Press **V+/V-** to adjust the volume. Press and hold **V+/V-** to adjust the volume quickly.
- C. Press **Previous/Next** to choose stations which have been saved in the Preset mode or to adjust the frequency in the Manual mode. Press and hold **Previous/Next** to choose stations quickly in the Preset mode or change to auto scan in the Manual mode.
- D. Press the Power button to enter to the FM Record mode.
- E. Press **FUNC** to enter its submenu.

Operation in Movie mode

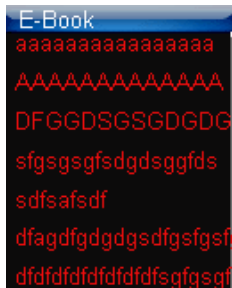
- A. Press **Play ▶ / II** to pause or resume playback. Press and hold **Play ▶ / II** to stop the player and open the main menu.
- F. Press **V+/V-** to adjust the volume. Press and hold **V+/V-** to adjust the volume quickly.
- B. Press **Previous/Next** to skip to previous/next movie. Press and hold **Previous/Next** to fast backwards or forwards.
- C. Press the Power button to stop the movie and enter its submenu.

Operation in Photo Mode

- A. Press and hold **Play ▶ / II** to open the main menu.
- B. Press **V+/V-** to skip to the previous/next photo.
- C. Press **Previous/Next** to enter its submenu which shows the folder contents.
- D. Press the Power button to enter its submenu which shows the folder contents.
- E. Press **FUNC** to enter its submenu which contains slide show and manual scan.

Operation in E-Book Mode

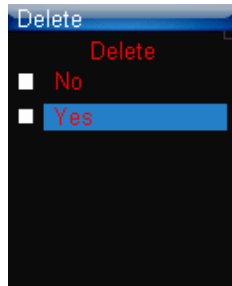
- A. Press **V+/V-** to turn over the E-book by row.
- B. Press **Previous/Next** to turn over the E-book by page.
- C. Press and hold **Play ▶ / II** to open the main menu.
- D. Press the Power button to enter its submenu.



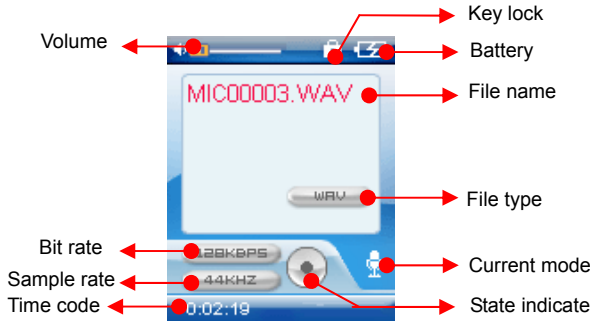
Operation in Delete Mode

Press **FUNC** to open delete dialog like rights in delete submenu.

- A. Press **V+ / V-** to choose "Yes" or "No".
- B. Press **Previous** to return to the Delete submenu.
- C. Press **Next** to confirm your selection.
- D. Press and hold **Play ▶ / II** to open the main menu.



Operation in Voice Record/FM Record Mode



- A. Press **Play** ▶ / || to pause or resume recording.
- B. Press the Power button to stop recording.

Setting Up the Player

You can set up your player via the settings menu, where you can change your settings for things such as USB Mode, Time, Power, Language, Display, Record, Sys Tools, Hold time, etc.

USB Mode

There are two options to select from: MSC mode, MTP mode.

Time

There are two options to select from: Adjust, Time Zone.

Adjust allows you to set the current time, and **Time Zone** lets you select the time zone you are in.

Power

There are two options to select from: Auto off, Always on.

Auto off means that the player will automatically turn itself off when it has been idle for several minutes.

Always on means that the player will always remain on.

Language

There are seven languages to select from: English, French, German, Italian, Spanish, Portuguese and Dutch.

Display

There are two options to select from: Brightness, Backlight.

Brightness allows you to adjust the brightness of your screen.

Backlight allows you to turn on and off your backlight. Turning the backlight off is useful when you are attempting to save battery power.

Record

This field can set the quality of recording files.

Sys Tools

There are five options to select from: Delete, Format, Reset, Sys Info, and Delete Lic.

Hold Time

There are six options to select from: 10 sec, 30 sec, 1 min, 5 min, Off.

Warnings

Low Battery

Low battery will be displayed on the screen to remind you when you need to charge the player.

No File

No File will be displayed on the screen if there is no corresponding file in the player.

Key Locked

If the key locked function is activated, pressing the buttons will have no effect.

To unlock the player, press and hold **Play ▶ / ||** for about 2 seconds.

Device Full

When the player memory is full, **Device full** will be displayed on the screen.

Troubleshooting

If there is no picture displayed after the player is connected to your PC but is unable to be used as a storage disk or cannot be powered on after the battery is fully charged, please refer to the following steps to update the software in the player.

- (1) Download the most updated software from the attached CD (if any) or from the website (if any) and implement the Setup.exe files in the folder to complete the installation.
- (2) Press and hold **V-** and then plug in the USB cable.
- (3) Implement the newly updated software by clicking on Start Software Upgrade and then releasing the **V-** button.
- (4) The software upgrade may format the player, so before upgrading the player's software, remember to copy all files on the player to your PC first.
- (5) If the software upgrade program cannot detect the player, please unplug the USB cable and repeat steps (2) and (3) until the player is detected and the software upgrade is completed.

Technical Specifications

MP3 bit rate	32Kbps~320Kbps	Screen	1.8" TFT color display
Music format	MP3 WMA WAV	Battery	Rechargeable battery(310HA)
Photo format	JPEG BMP	Battery life	8 hours
Movie format	MTV	USB port	USB2.0 High speed
E-book format	TXT	Frequency response	20Hz~20KHz
Recorded format	WAV	Distortion	<0.05%
Maximum record duration	8hours(128M,8KHZ)	Output power	5mW *2
Dynamic current	<70m A	File-saving conditions	Humidity <90%, Normal temperature
Power off current	<0.38 m A	Working environment	Humidity <85%,-10~40°C
dimension	77*40*11.5mm	S/N	>85
Weight	35g	Dynamic range	>80db()



This manual was correct and complete at the time of printing. However specifications and updates can occur at any time without prior notice.

This device complies with part 15 subpart B of the FCC Rules. Operation is subject to the following two conditions:

- (1) This device may not cause harmful interference, and
- (2) This device must accept any interference received, including interference that may cause undesired operation.

Modifications not approved by the party responsible for compliance could void user's authority to operate the equipment.

NOTE: This equipment has been tested and found to comply with the limits for Class B digital device, pursuant to part 15 of the FCC Rules. These limits are designed to provide reasonable protection against harmful interference in a residential installation. This equipment generates, uses and can radiate radio frequency energy and, if not installed and used in accordance with the instructions, may cause harmful interference to radio or television reception, which can be determined by turning the equipment off and on, the user is encouraged to try to correct the interference by one or more of the following measures:

Reorient or relocate the receiving antenna.

Increase the separation between the equipment and the receiver.

Connect the equipment into an outlet on a circuit different from that to which the receiver is connected.

Consult the dealer or an experience radio / TV technician for help

No part of this manual may be copied, republished, reproduced, transmitted or distributed in any way without prior written consent of Nextar, Inc. Any unauthorized distribution of this manual is expressly forbidden.

© 2008 Nextar (Hong Kong) Limited. Nextar is a trademark and service mark of Nextar (Hong Kong) Limited. All other brand names, trademarks and service marks are property of their owners.

Nextar may find it necessary to modify, amend or otherwise change or update this manual. We reserve the right to do this at any time, without any prior notice. All specifications and features are subject to change without notice. All screen shots shown are simulated and may not represent the actual screen on production units sold to consumers.

For instruction manuals, updated drivers or other information, be sure to visit our website at:
www.Nextar.com

Or write us at:

Nextar

1661 Fairplex Dr.

LaVerne, CA USA 91750

Customer Services: 1-888-849-0846

Copyright © 2008

Free Manuals Download Website

<http://myh66.com>

<http://usermanuals.us>

<http://www.somanuals.com>

<http://www.4manuals.cc>

<http://www.manual-lib.com>

<http://www.404manual.com>

<http://www.luxmanual.com>

<http://aubethermostatmanual.com>

Golf course search by state

<http://golfingnear.com>

Email search by domain

<http://emailbydomain.com>

Auto manuals search

<http://auto.somanuals.com>

TV manuals search

<http://tv.somanuals.com>