



Wii™

mini

Wii mini Operations Manual System Setup



NINTENDO OF AMERICA INC.
P.O. BOX 957, REDMOND, WA
98073-0957 U.S.A.

**NEED HELP WITH INSTALLATION,
MAINTENANCE OR SERVICE?**

Nintendo Customer Service
SUPPORT.NINTENDO.COM
or call 1-800-255-3700

**BESOIN D'AIDE POUR L'INSTALLATION,
L'ENTRETIEN OU LA RÉPARATION?**

Servicio al Cliente de Nintendo
SUPPORT.NINTENDO.COM
ou composez le 1 800 255 3700

**¿NECESITAS AYUDA DE INSTALACION,
MANTENIMIENTO O SERVICIO?**


Servicio al Cliente de Nintendo
SUPPORT.NINTENDO.COM
o llame al 1-800-255-3700

MAA-RV0-S-USZ-CD



70844A PRINTED IN CHINA
Download from www.Somanuals.com. All Manuals Search And Download.

To protect your health and safety, and for correct use of the Wii mini system (the "Wii system"), please read and follow the instructions in this operations manual before setup or use.

Throughout this manual, you will see this symbol  followed by WARNING or CAUTION. These terms have different levels of meaning:

WARNING - Warns you about incorrect use of the Wii system that could result in serious personal injury.


CAUTION - Cautions you about incorrect use of the Wii system that could result in personal injury or damage to the Wii system, components, game discs or accessories.

IMPORTANT NOTE FOR PARENTS:

Before allowing any child to use the Wii system, a parent or other responsible adult should determine whether the Wii system is appropriate for the child. Only children who are old enough and capable of wearing the wrist strap and properly gripping the Wii Remote Plus should use the system. You should also consider whether children should be supervised while playing games. Be sure to explain all safety and health information and instructions to any children who are going to use the system. Failure to do so may result in injuries or damage to the system or other property.

NOTE: This product only plays Wii Game Discs labeled with "For use only in USA, Canada, Mexico and Latin America". This product does not play CD or DVD discs. This Wii mini console is for use only in the United States, Canada, Mexico or Latin America.

The official seal is your assurance that this product is licensed or manufactured by Nintendo. Always look for this seal when buying video game systems, accessories, games and related products.




Product recycling information:
visit recycle.nintendo.com

TM, ® and the Wii logo are trademarks of Nintendo. © 2012 Nintendo. Elements of the Wii mini console are patent pending, both in the United States and internationally.

NOTE:

- This Wii system does not connect to the Internet or support any online features in games. Because Wii mini doesn't come with internet features, Wi-Fi features, WiiConnect24, nor SD card slot, some of the software features will be disabled.
- This Wii system is not compatible with Nintendo GameCube™ Game Discs or accessories.
- The instructions for operating the Wii Menu and the pre-installed software are available electronically on your console. Using the Wii Remote Plus™ controller, point at the Wii Menu Manual icon and press the A Button. Then select Start on the channel preview screen to open the manual.

Français – Page 35
Español – Página 71

Health and Safety Information	2-3
System Components	
Wii mini Console	4-5
Wii Remote Plus	6
Nunchuk™	7
Sensor Bar	7
Wii AC Adapter	8
Wii AV Cable	8
System Setup	
Wii mini Console	9
Wii AV Cable	10
Sensor Bar	11-14
Wii AC Adapter	14
TV and Audio/Video Settings	15
Setup of Wii Remote Plus	16-18
Synchronizing Your Wii Remote Plus and Wii mini Console	19-20
Using Game Discs	21
Wii System Play Guidelines	22
Using the Wii Remote Plus	23-24
Using the Nunchuk	25-26
Troubleshooting	27-29
FCC Information	30
Warranty and Service Information	31
Error Messages	32-33
Error Codes	34

Health and Safety Information

IMPORTANT SAFETY INFORMATION – READ THE FOLLOWING WARNINGS BEFORE SETUP OR USE OF THE Wii mini. IF THIS PRODUCT WILL BE USED BY YOUNG CHILDREN, THIS MANUAL SHOULD BE READ AND EXPLAINED TO THEM BY AN ADULT. FAILING TO DO SO MAY CAUSE INJURY. PLEASE CAREFULLY REVIEW THE INSTRUCTION BOOKLET FOR THE GAME YOU ARE PLAYING FOR ADDITIONAL HEALTH AND SAFETY INFORMATION.

⚠ WARNING - Seizures

Some people (about 1 in 4000) may have seizures or blackouts triggered by light flashes or patterns, and this may occur while they are watching TV or playing video games, even if they have never had a seizure before.

Anyone who has had a seizure, loss of awareness, or other symptom linked to an epileptic condition should consult a doctor before playing a video game.

Parents should watch their children play video games. Stop playing and consult a doctor if you or your child has any of the following symptoms:

Convulsions	Eye or muscle twitching	Loss of awareness
Altered vision	Involuntary movements	Disorientation

To reduce the likelihood of a seizure when playing video games:

- Sit or stand as far from the screen as possible.
- Play video games on the smallest available television screen.
- Do not play if you are tired or need sleep.
- Play in a well-lit room.
- Take a 10 to 15 minute break every hour.

⚠ WARNING - Repetitive Motion Injuries and Eyestrain

Playing video games can make your muscles, joints, skin or eyes hurt. Follow these instructions to avoid problems such as tendinitis, carpal tunnel syndrome, skin irritation or eyestrain:

- Avoid excessive play. Parents should monitor their children for appropriate play.
- Take a 10 to 15 minute break every hour, even if you don't think you need it.
- If your hands, wrists, arms or eyes become tired or sore while playing, or if you feel symptoms such as tingling, numbness, burning or stiffness, stop and rest for several hours before playing again.
- If you continue to have any of the above symptoms or other discomfort during or after play, stop playing and see a doctor.

⚠ WARNING - Electric Shock

To avoid electric shock when you use this system:

- Do not use the Wii system during a lightning storm. There may be a risk of electric shock from lightning.
- Use only the AC Adapter that comes with your system.
- Do not use the AC Adapter if it has damaged, split or broken cords or wires.
- Make sure that the AC Adapter cord is fully inserted into the wall outlet or extension cord.
- Always carefully disconnect all plugs by pulling on the plug and not on the cord. Make sure the Wii mini power button is turned OFF before removing the AC Adapter cord from an outlet.

⚠ CAUTION - Motion Sickness

Playing video games can cause motion sickness in some players. If you or your child feel dizzy or nauseous when playing video games, stop playing and rest. Do not drive or engage in other demanding activity until you feel better.

⚠ WARNING - Radio Frequency Interference

The Wii mini console and Wii Remote Plus can emit radio waves that can affect the operation of nearby electronics, including cardiac pacemakers.

- Do not operate the Wii mini console or remote within 9 inches of a pacemaker.
- If you have a pacemaker or other implanted medical device, do not use the Wii mini console or remote without first consulting your doctor or the manufacturer of your medical device.

⚠ CAUTION - Laser Device

The Wii mini console is a Class I laser product. Do not attempt to disassemble the Wii mini console. Refer servicing to qualified personnel only.

Caution: Use of controls or adjustments or procedures other than those specified herein may result in hazardous radiation exposure.

Specifications:

Laser Type: Semiconductor laser
Laser power: Max. 0.9mW

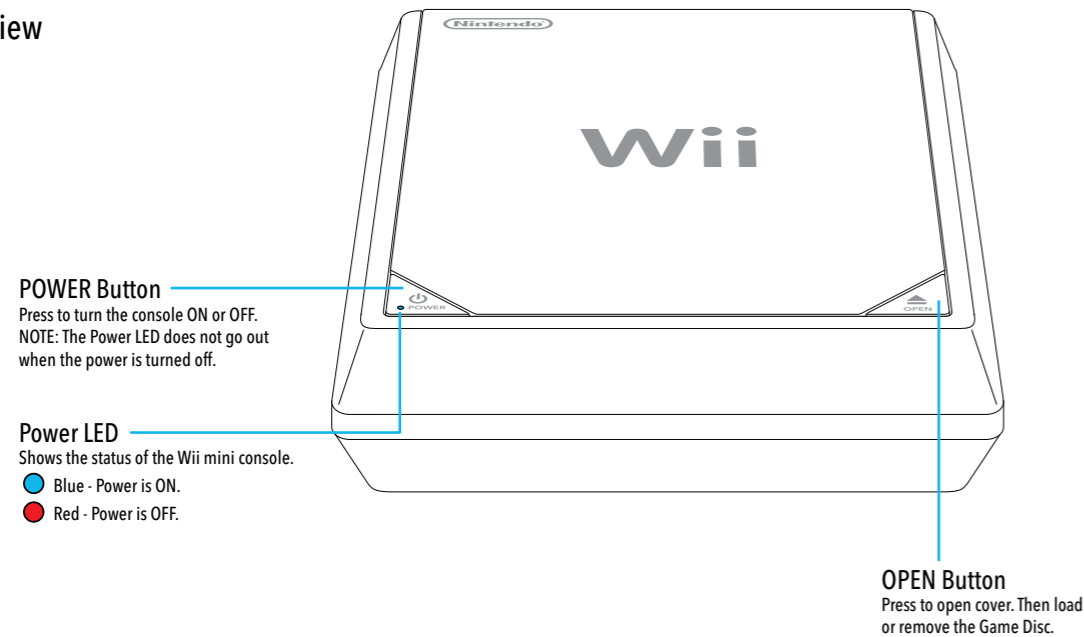
Laser wave length: 662nm (typ.)(647nm~687nm)
Numeric aperture: 0.6

NOTE: This product does not contain latex.

This product complies with applicable laws barring the use of toxic materials such as lead, mercury, cadmium, hexavalent chromium, PBB or PBDE in consumer products.

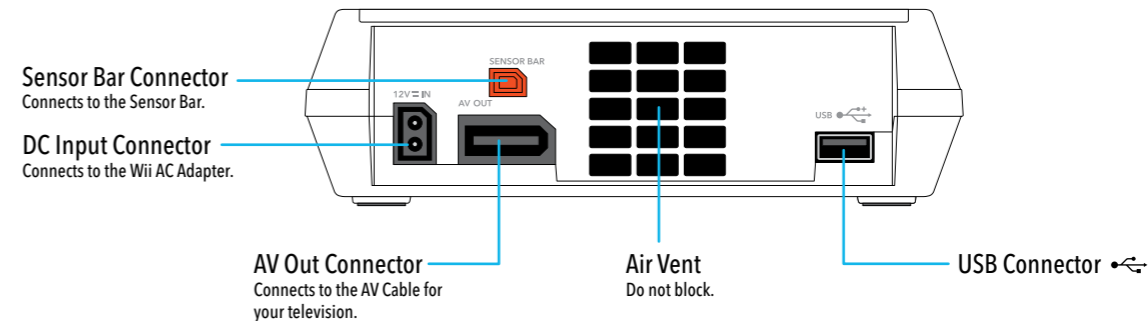
Wii mini Console

Front view

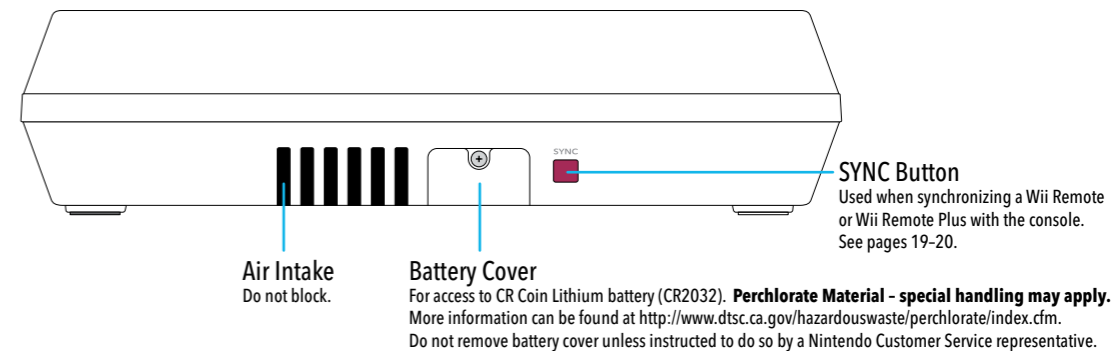


Wii mini Console

Back view

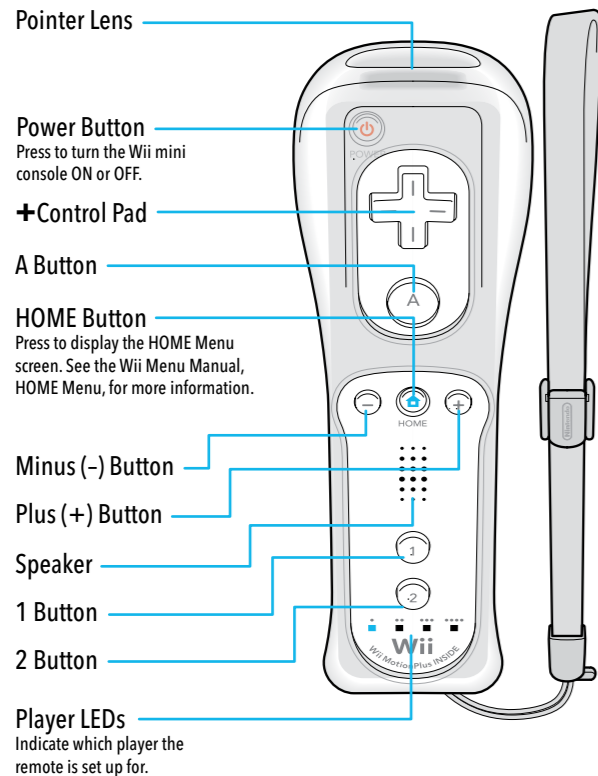


Left side view



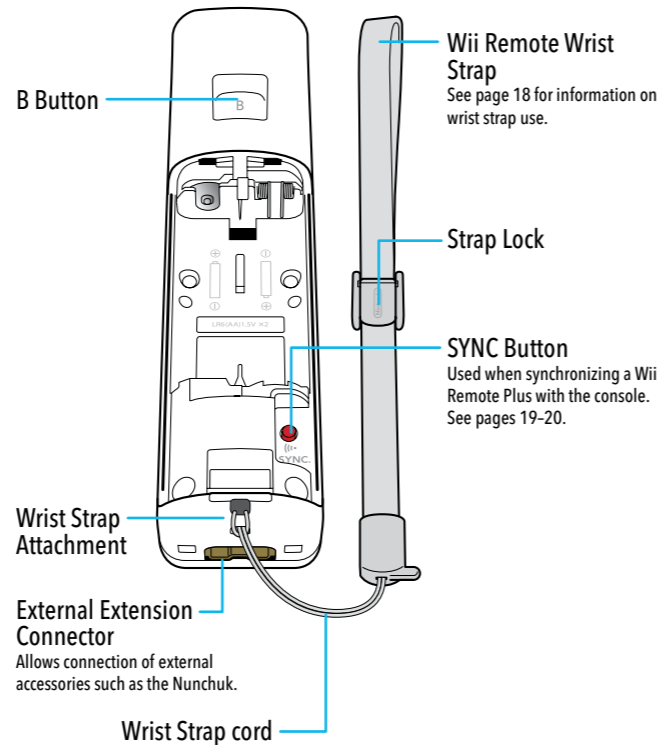
Wii Remote™ Plus

(Shown with the included Wii Remote Jacket attached.)

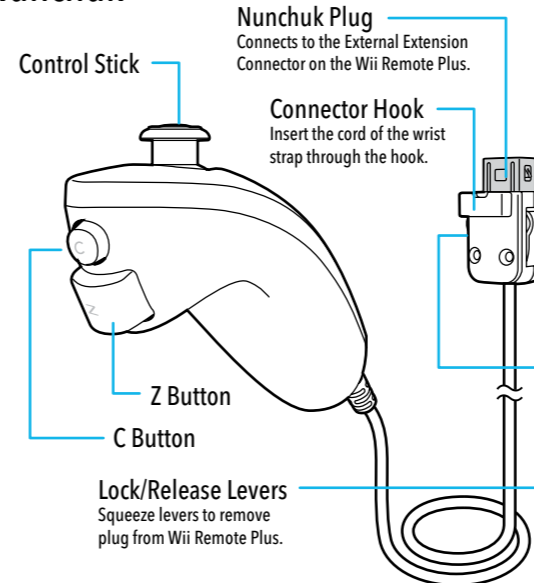


Back view

(Shown with the battery cover removed.)



Nunchuk™



To take advantage of the features of the Nunchuk accessory, you must use Wii game software that supports Nunchuk gameplay features. Look for this icon on game packaging for games that are designed to be used with Nunchuk.

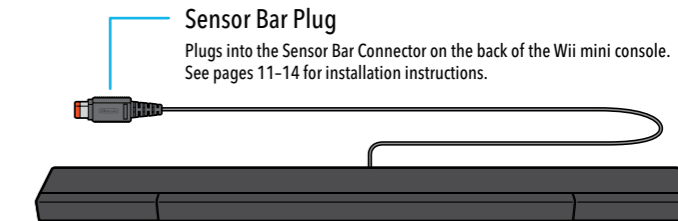


NOTE: If the Control Stick is moved out of neutral position when the Wii power is turned ON, or when connecting to the remote, that position will be set as neutral position, causing incorrect game control during game play. To reset the Control Stick, allow it to return to the normal neutral position, then simultaneously hold down the A, B, Plus (+) and Minus (-) buttons on the remote for three seconds.

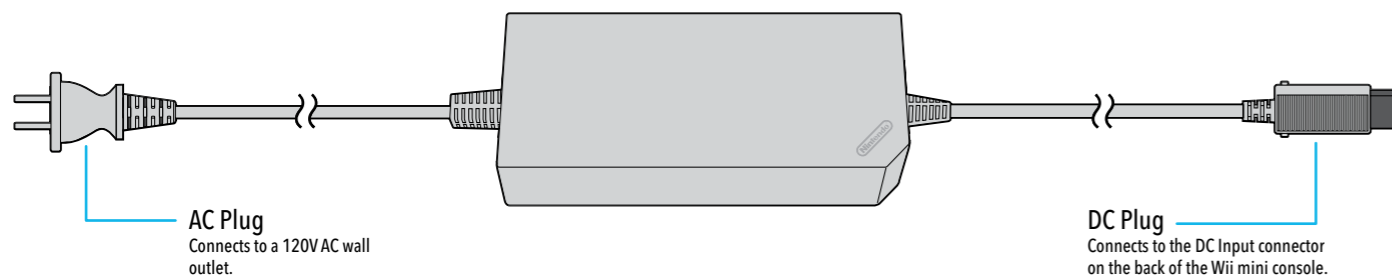
To avoid this from occurring, do not move the Control Stick when:

- Turning the Wii mini console on
- Plugging the Nunchuk into the Wii Remote Plus
- Starting Channels from the Channel Menu
- Returning to the Wii Menu from games or Channels

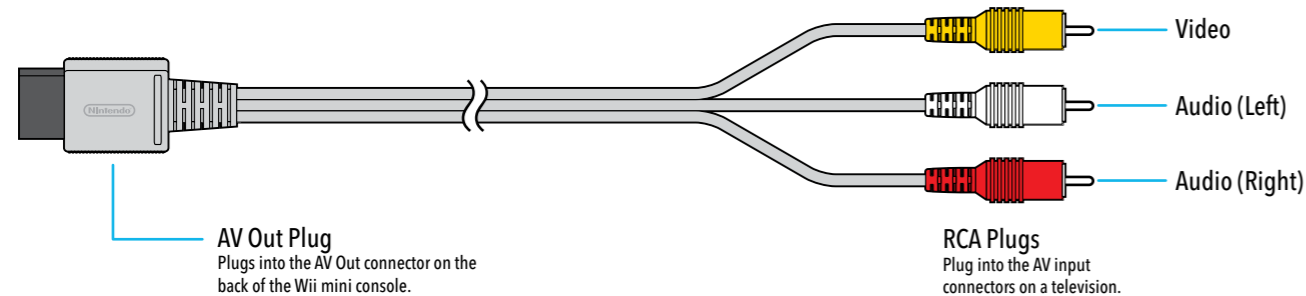
Sensor Bar



Wii AC Adapter



Wii AV Cable



Wii mini Console Usage Precautions

Please read and follow the precautions listed below when setting up and using the Wii mini console. Failure to do so may result in damage to your Wii system or accessories.

- Do not use any AC Adapter other than the one provided with your system.
- The console has intake and exhaust vents designed to maintain adequate ventilation. Do not operate the console in any location where these vents may become covered or obstructed, for example, on carpet or in a tightly enclosed space. Keep vents clear of any dust or other foreign material.
- Do not disassemble or try to repair the console, accessories or components. Doing so voids your warranty.
- After you have finished playing, be sure to remove the Game Disc from the console.
- Do not store the console in a humid place, on the floor, or in any location where it may collect dirt, dust, lint, etc.
- Do not drop, hit or otherwise abuse the console, components or accessories.
- When disconnecting any plugs from the console or wall outlet, first turn the Wii mini console off. Then carefully pull by the plug itself rather than by the cord.
- Do not step on, sharply pull or bend any wire or cables.
- Do not expose the console, components or accessories to extreme heat or cold.
- Do not spill any liquids on the console, components or accessories. To clean, use a soft slightly damp cloth. Use water only. Allow to dry completely before using.

Wii mini Console Placement

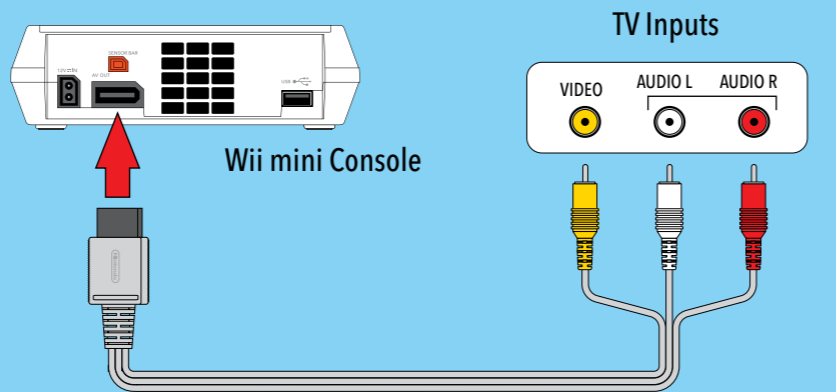
Place the Wii mini console on a flat horizontal surface.

NOTE: Choose a location to set up the console that has enough room to allow for free flow of ventilation around the console.



Connecting the AV Cable

1. Insert the AV Out plug on the Wii AV Cable into the AV Out connector on the back of the console.
2. Insert the RCA plugs on the Wii AV Cable into the input connectors on the TV, VCR or other audio equipment.



IMPORTANT: The Wii mini console will not work with any AV cable other than the model supplied.

CAUTION - TV Screen Damage

Some televisions can be damaged by the display of a stationary image, because the image may be permanently "burned" into the screen. Playing video games with stationary images or patterns, or leaving video games on hold or pause, may lead to this type of damage. When taking a break, place the game on pause and turn the TV off until you are ready to play again.

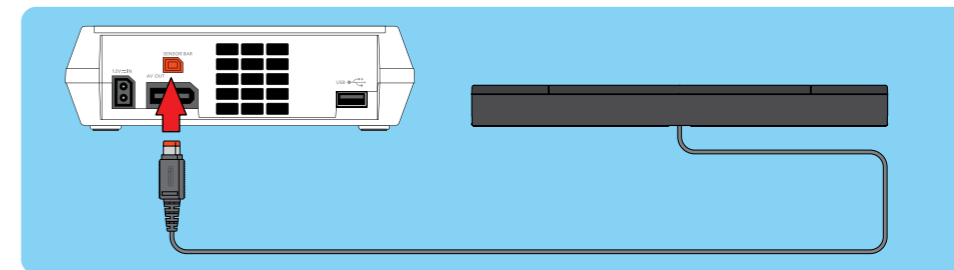
Before using your Wii system with any TV, especially front and rear projection or plasma models, be sure to review all documentation included with your TV to find out whether video games can be played on the TV without damaging it.

If in doubt, contact the manufacturer of the TV. Neither Nintendo nor any of Nintendo's licensees will be liable for any damage to your TV.

Sensor Bar Setup

■ Connecting the Sensor Bar

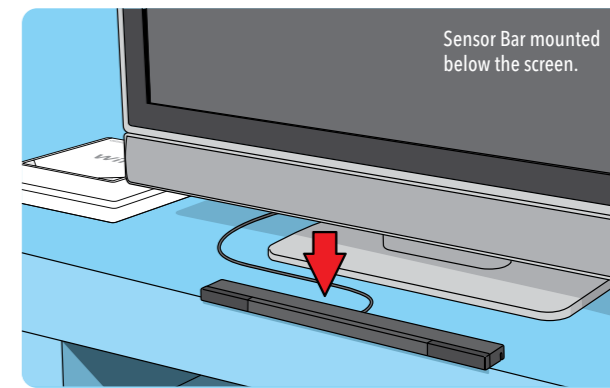
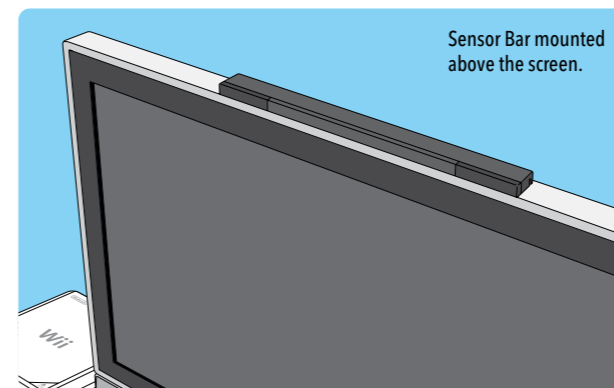
Insert the Sensor Bar plug into the Sensor Bar connector on the back of the console.



■ Placing the Sensor Bar

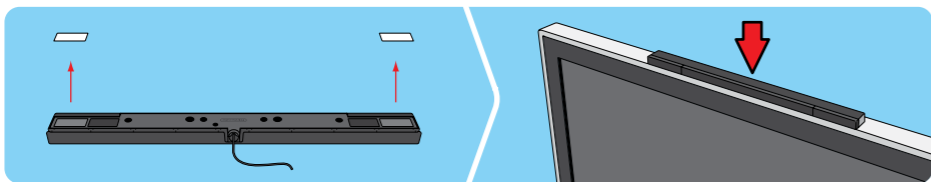
The Sensor Bar can be placed either above or below the TV screen.

- See page 12 for instructions on mounting the Sensor Bar to the top of the TV.
- See page 13 for instructions on mounting the Sensor Bar below the TV screen.



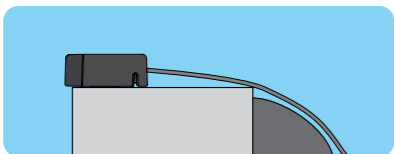
System Setup

■ Mounting the Sensor Bar Above the Screen

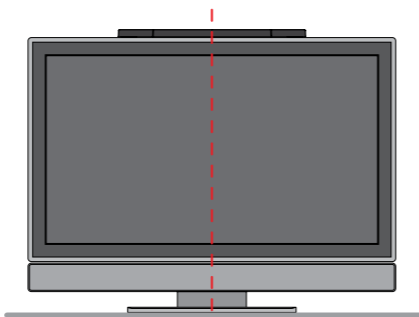


1. Remove the protective film from the foam pads on the bottom of the Sensor Bar.

2. Mount the Sensor Bar to the top of the TV.

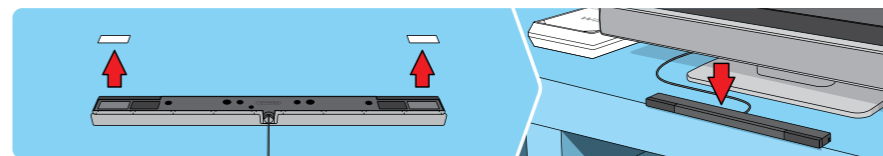


- The front of the Sensor Bar should be aligned close to the front of the TV.



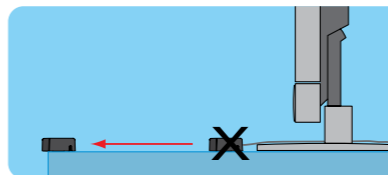
- The center of the Sensor Bar should be aligned with the center of the TV.

■ Mounting the Sensor Bar Below the Screen

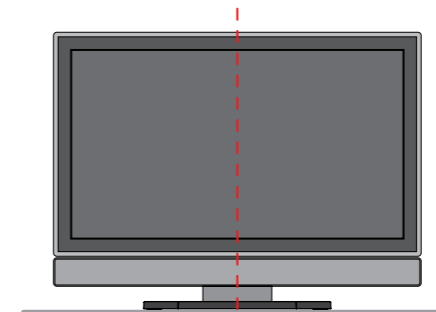


1. Remove the protective film from the foam pads on the bottom of the Sensor Bar.

2. Mount the Sensor Bar to the front edge of the surface the TV is sitting on. **Do not place the Sensor Bar below the surface that the TV is sitting on; for example, on shelves below the TV.**



- The front of the Sensor Bar should be aligned with the front of the surface the TV is sitting on.

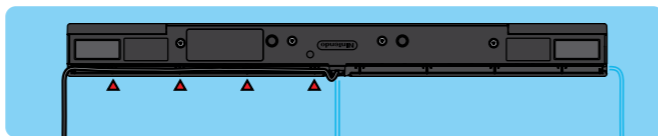


- The center of the Sensor Bar should be aligned with the center of the TV.

System Setup

■ Sensor Bar cable position

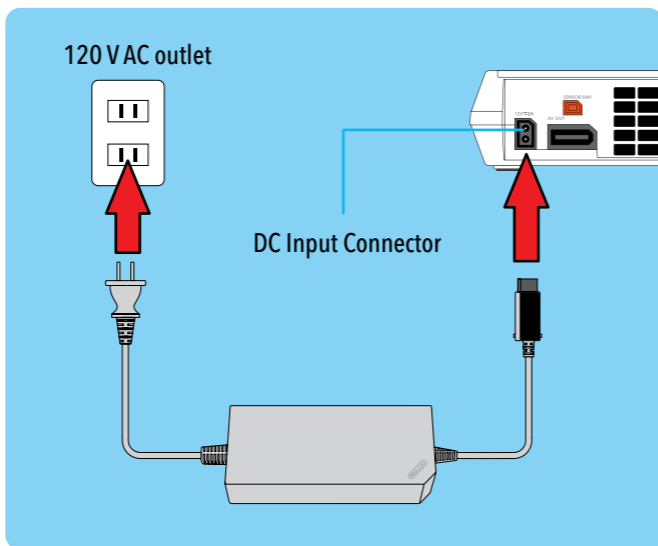
If desired, the Sensor Bar cable can be fed through a channel on the bottom of the Sensor Bar to orient the cable to the left or right.



Wii AC Adapter

1. Insert the DC plug on the Wii AC Adapter cord into the DC input connector on the back of the console.
2. Insert the AC plug into a 120V AC wall outlet. **Make sure the power is off (the Power LED is red) when unplugging the AC Adapter.**

CAUTION: To prevent electric shock, match the wide blade of the plug to the wide slot and insert fully into outlet.



TV and Audio/Video Settings

After you have completed all steps of the setup procedure and are ready to use the Wii system, you will need to set the appropriate "input select" setting for your TV, VCR or other audio equipment.

1. Turn ON the power for your TV and any audio equipment connected to your gameplay setup and the power on the Wii mini console.
2. Select the correct input setting for your TV (see Input Select Information at right).
3. The Wii Menu (see below) should appear on the TV screen. See the e-manual for more information on this feature.

If the Wii Menu screen does not appear, check to make sure your input setting is correct and review the Troubleshooting section on page 27.



■ Input Select Information

The input select allows you to switch between the different inputs on your TV or VCR.

Manufacturers of TVs and VCRs use different names and locations for "input select." The common names for the input select are: input, select, input select, line, line in, source, in, EXT, and AUX. Consult your TV or VCR instruction manual for details.

NOTE: More information on "Input Select" is available on our web site at support.nintendo.com/consumer/inputselects.html

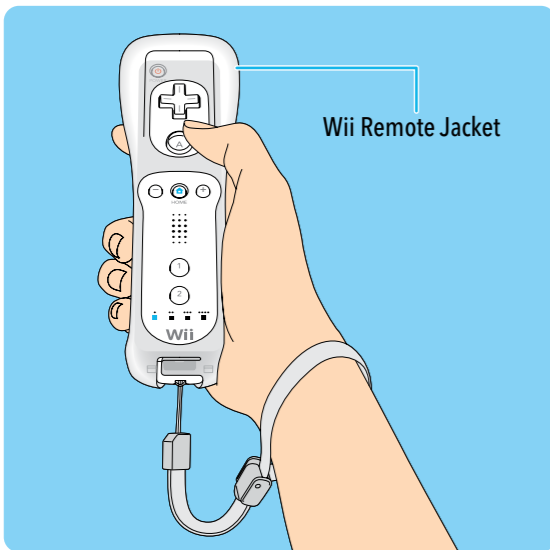
Locate the input select for the component that the Wii AV Cable is connected to (either the TV or VCR). The most common locations for input select are:

- A button on the front of the TV or VCR.
- A button on the remote control.
- A high-numbered or low numbered channel (92, 99, 00, or 02) on the TV or VCR.
- An on-screen menu selection.

Setup of Wii Remote Plus

The Wii Remote™ Plus comes with the Wii Remote jacket installed.

- Be sure that the Wii Remote jacket is installed during gameplay to reduce the risk of harm to the remote, surrounding objects, or people.
- It may be necessary to remove the Wii Remote jacket – for example, to replace the batteries in the Wii Remote Plus. If you do remove the Wii Remote jacket, be sure to replace it before further play.



■ Installing Batteries

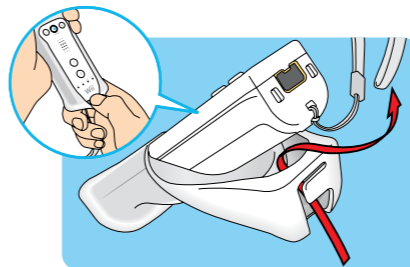
The Wii Remote Plus uses AA batteries. Nintendo recommends high quality alkaline batteries for best performance and longevity of battery life. **If you use rechargeable nickel metal hydride (NiMH) batteries, be sure to follow the manufacturer's guidelines for safety and proper usage.**

⚠ WARNING - Battery Leakage

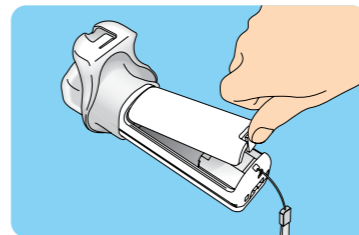
Leakage of battery fluid can cause personal injury as well as damage to your remote. If battery leakage occurs, thoroughly wash the affected skin and clothes. Keep battery fluid away from your eyes and mouth. Leaking batteries may make popping sounds. To avoid battery leakage:

- Do not mix used and new batteries (replace all batteries at the same time).
- Do not mix different brands of batteries.
- Nintendo recommends alkaline batteries. Do not use Lithium ion, nickel cadmium (nicad), or carbon zinc batteries.
- Do not leave batteries in the remote for long periods of non-use.
- Do not recharge alkaline or non-rechargeable batteries.
- Do not put the batteries in backwards. Make sure that the positive (+) and negative (-) ends are facing in the correct directions. Insert the negative end first.
- When removing batteries, remove the positive end first.
- Do not use damaged, deformed or leaking batteries.
- Do not dispose of batteries in a fire.

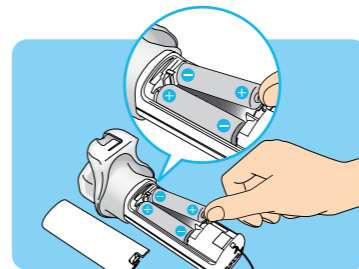
1. Pull the Wii Remote jacket off the base of the Wii Remote Plus and pull the wrist strap out of the hole in the bottom of the jacket.



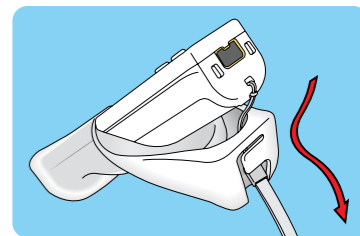
2. Pull the jacket up the remote far enough to expose the entire battery cover and remove the cover.



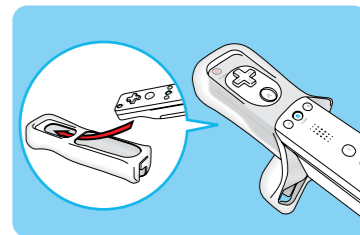
3. Insert the batteries into the battery chamber. Be sure to insert the minus (-) end first when inserting new batteries, and remove the plus (+) end first when replacing the batteries.



4. Replace the battery cover, thread the wrist strap through the hole in the bottom of the jacket and pull the jacket back over the bottom of the remote.

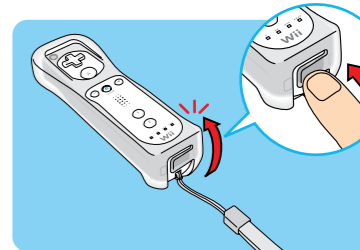


5. If you remove the jacket from the remote, replace it by inserting the top of the remote into the large hole on the front of the jacket. Be sure to push it all the way into the inside of the jacket.



6. Thread the wrist strap through hole in the bottom of the jacket, as shown in step 4, above.

7. Insert the connector cover into the External Extension Connector on the bottom of the remote.



NOTE: Battery life can be checked by pressing the HOME Button. See the Wii Menu Manual for more information.

⚠ CAUTION - Use the Wrist Strap

Wii gameplay with the Wii Remote Plus can involve rapid or vigorous motion. Please use the wrist strap to prevent losing your grip on the remote and causing damage to the remote or surrounding objects, or injury to other people.

WEAR THE WRIST STRAP WHEN USING THE WII REMOTE PLUS.

- Make sure all players use the wrist strap and that the strap lock is correctly tightened.
- When sharing the Wii Remote Plus between multiple players, make sure each person uses the wrist strap properly.
- Wearing the wrist strap will prevent you from accidentally dropping or throwing the remote during gameplay, which could damage the remote or surrounding objects, or cause injury to other people.

DO NOT LET GO OF THE REMOTE DURING GAME PLAY.

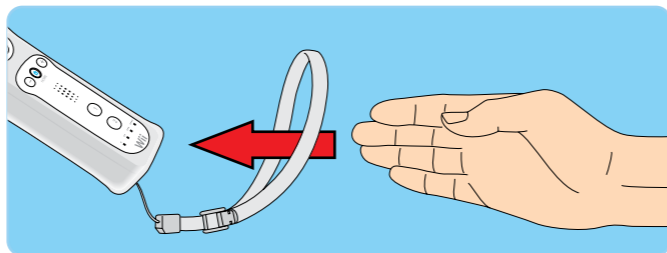
- Read the Instruction booklet for the game you are playing and follow all game control instructions for correct use of the Wii Remote Plus or accessory controllers.
- Hold the remote securely and avoid excessive motion, as it may cause you to let go of the remote and may break the wrist strap.
- If your hands become moist, stop and dry your hands.

ALLOW ADEQUATE ROOM AROUND YOU DURING GAME PLAY.

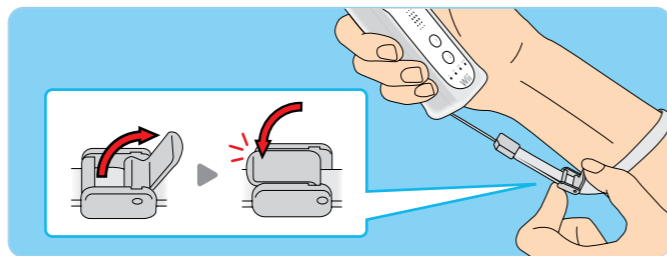
- Stay at least three (3) feet away from the television.
- As you may move around during gameplay, make sure objects and other people are out of your range of movement or arm motion to prevent damage or injury.

■ Wearing the Wii Remote Wrist Strap

1. Open the lever on the strap lock and place your hand through the wrist strap. Hold the remote firmly in your hand.



2. Slide the strap lock up so that the strap will not fall off your wrist. Do not over tighten the strap lock so that it's uncomfortable. It should just be tight enough to hold the wrist strap in place. Close the lever to hold the strap lock in place.



Synchronizing Your Wii Remote Plus with the Wii mini Console

NOTE: Make sure you have placed batteries in the Wii Remote Plus.

This procedure allows the Wii Remote or Wii Remote Plus to communicate with the console.

The Wii Remote Plus included with your Wii system has been synchronized with the console at the factory.

There are two different modes of synchronizing (syncing) a Wii Remote or Wii Remote Plus with your console:

STANDARD MODE - The Standard Mode procedure is used when adding additional remotes to your system or if you want to re-synchronize your original remote. Once synchronized, the remote will stay synced to the console unless you overwrite this setting by syncing the remote to a different console.

NOTE: With Standard Mode Synchronization, you can synchronize up to 10 Wii Remote or Wii Remote Plus controllers with your Wii mini console. The data of the remote that was synchronized first is deleted if you synchronize more than 10.

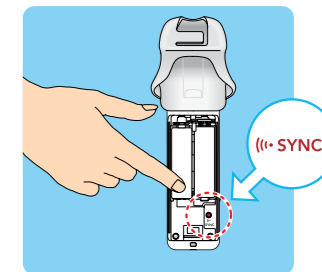
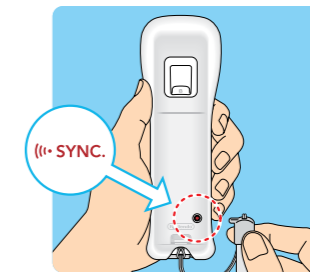
ONE TIME MODE - This mode allows you to temporarily use your remote on a console other than your own or to use a friend's remote on your console. **It does not delete the Standard Mode setting stored in the remote.** In this mode, the remote will only communicate with the console while the power is on. When the power is turned off the remote will lose its sync with the console.

- Only a Wii Remote or Wii Remote Plus in Standard Mode can turn the console power ON or OFF.

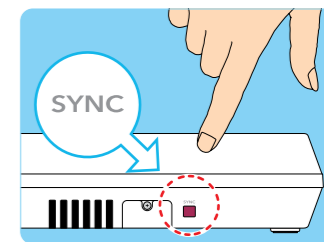
■ Standard Mode Synchronization

1. Press the Power button on the Wii mini console to turn it on.
2. Press and release the SYNC. button on the back of the Wii Remote Plus. The Player LEDs will blink.

NOTE: Some models may require to remove the battery cover to push the SYNC. button.



3. Press the SYNC Button on the side of the console. When the Player LED blinking stops, connection is complete. The LED that is illuminated indicates the player number.



IMPORTANT: This procedure must be followed for each additional remote added to your system.

One Time Mode Synchronization

NOTE: This mode temporarily removes the Standard Mode synchronization setup for all remotes until the power of the Wii mini console is turned off. When the power is turned back on again, the Standard Mode settings will return.

1. Press the HOME Button on a remote that is synchronized with the console.
2. Select the Wii Remote Settings option from the Home Button menu, then select the Reconnect option.

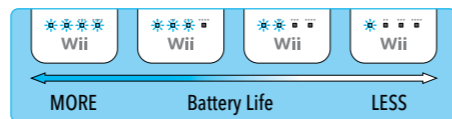


3. Press the 1 and 2 Buttons simultaneously on the remote that you want to synchronize with the console.

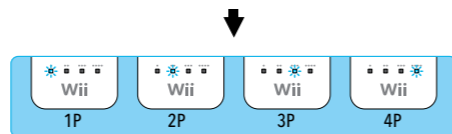
The order in which you synchronize remotes will set the player order for multiplayer games.



4. The Player LEDs will blink during the syncing process. When the blinking stops, the connection is complete. See diagram at right for a description of what the blinking indicates.



During the syncing process, the number of LEDs that blink will show the battery life of the remote that is being synchronized.



After the syncing process, LED that is lit shows the player number for that remote.

NOTE: One Time Mode synchronization is temporary. The Wii Remote or Wii Remote Plus will lose this synchronization under the following conditions:

- When you turn off the console by pressing the Power Button on either the remote or the console.
- When starting up a game or Channel from the Wii Menu.
- When returning to the Wii Menu after exiting from a game or Channel.
- When you select Reset on the HOME Menu screen.
- When you press the Reset Button on the front of the console.

IMPORTANT: IF YOUR REMOTE LOSES IT'S SYNCHRONIZATION WITH THE CONSOLE AND YOU ARE UNABLE TO RE-SYNC IT, REVIEW THE Wii REMOTE PLUS TROUBLE-SHOOTING PROCEDURES ON PAGE 28.

Playing a Wii Game Disc

NOTE: Nintendo GameCube™ Game Discs are not compatible with this Wii mini console.

Before Loading a Disc

- Turn ON the power for your TV and any audio equipment connected to your gameplay setup.
- Select the correct input setting for your TV. (See page 15, TV and Audio/Video Settings.)

Loading a Game Disc

Press the Open Button to open the cover. Load the Game Disc, label facing up, onto the disc hub and press into place. Close the cover and press the POWER button to turn the console on.



Starting the Game

1. Using the Wii Remote Plus, move the cursor over the Disc Channel option on the Wii Menu screen and press the A Button to make a selection.

NOTE: Please see *Playing Wii Discs* in the built-in Wii Menu Manual for more information on using Game Discs in the Wii mini console.

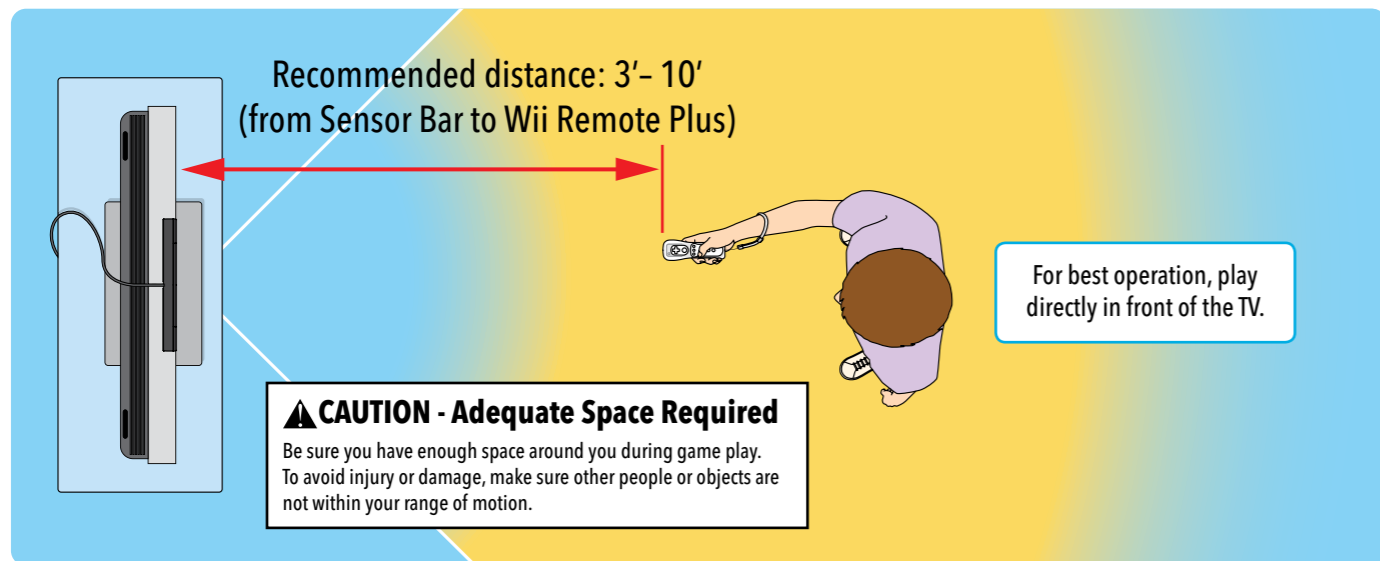
2. Select "PLAY" on the game title screen to begin the game. **Review the instruction booklet for the game you are playing for specific game information.**

Game Disc Usage Precautions

Please read and follow the precautions listed below when using Wii Game Discs in the Wii mini Console. Failure to do so may result in damage to your Wii system or game discs.

- To avoid pinching your finger, do not load the disc with your finger in the hole. Always handle the disc by the edges.
- Do not touch the bottom unprinted surface of the Game Disc. Always handle the disc by the edges.
- Do not use cracked, deformed or repaired discs.
- Do not bend or put excessive pressure on discs when loading into console.
- Do not leave discs in direct sunlight or expose them to high temperatures, high humidity or dust, dirt or other contaminants.
- When not using discs, store them in their cases to prevent them from getting scratched, dirty or damaged.
- Do not write on, or place stickers on any part of the disc.
- If a disc becomes dirty or contaminated with fingerprints, the system may not be able to read the game data correctly. If necessary, clean the disc with a soft, slightly damp cotton cloth (**use water only**). Clean the disc from center towards the edges; do not use a circular motion.
- Do not remove a disc until it has completely stopped spinning.

■ For best results when using the Wii system, follow these recommendations.



■ For best use of the Wii Remote Plus, follow these guidelines:

- Avoid blocking the signal between the remote, the Sensor Bar and the Wii mini console with objects.
- Use the remote the correct distance from the Sensor Bar. The optimal distance is between 3 and 10 feet.
- Avoid bright light sources, including sunlight, behind or near the TV, shining towards the remote or reflecting off of the screen.
- Avoid highly reflective surfaces near the Sensor Bar.
- Avoid sources of infrared light in the gameplay area such as electric, propane or kerosene heaters, flames from fireplaces or candles, and stoves or other sources of heat.
- If the remote seems to operate erratically, check and adjust the Sensor Bar sensitivity if necessary. (See the e-manual.)

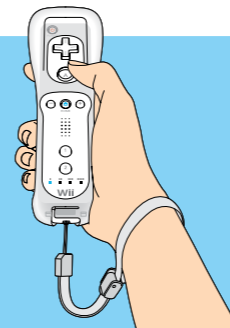
Be sure to read the following pages on using the Wii Remote Plus before using the Wii system.

Wii Remote Plus Configurations

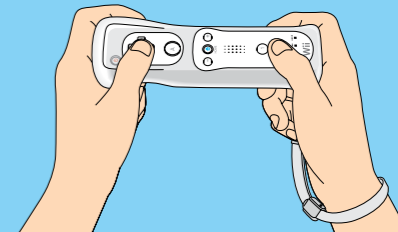
Depending on the game, the way you hold and operate the remote will vary. You may need to hold the remote in either one or two hands. Read the instruction booklet for the game you are playing for information about what kind of gameplay control is required for that game.

The remote can be used by itself, or in different configurations when connected up to other Wii accessories. These configurations can be used right or left handed.

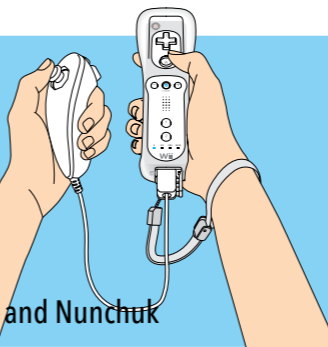
Wii Remote Plus - Vertical Position



Wii Remote Plus - Horizontal Position



Wii Remote Plus and Nunchuk



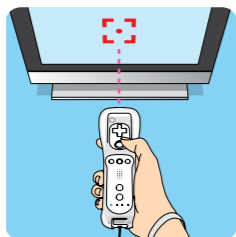
Wii Remote Plus and Classic Controller Pro™ (sold separately)



Basic Operations

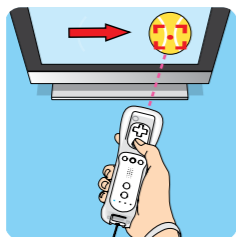
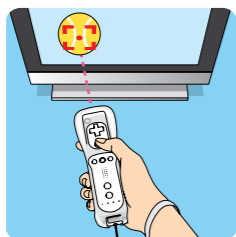
■ Point

Point the remote at a specific place on the TV screen.



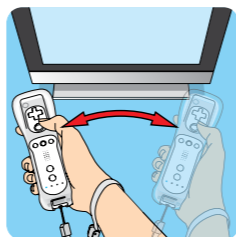
■ Holding or Grabbing

Point the remote at a specific place on the TV screen and move the remote while holding down a button.



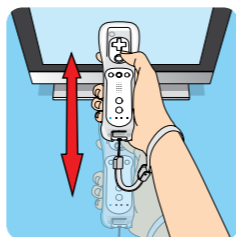
■ Waving

Wave the remote back and forth from side to side.



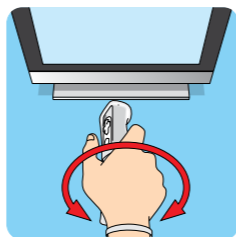
■ Pushing or Pulling

Move the remote forward and backward.



■ Twisting

Move the remote in a twisting motion by rotating your arm.



Setup and Use of the Nunchuk

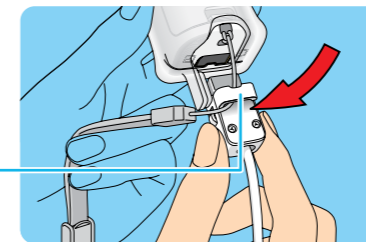
⚠ CAUTION - Use the Wrist Strap

Wii gameplay with the Wii Remote Plus and Nunchuk can involve rapid or vigorous motion. Please use the wrist strap to prevent losing your grip on the remote and causing damage to the remote and surrounding objects, or injury to other people.

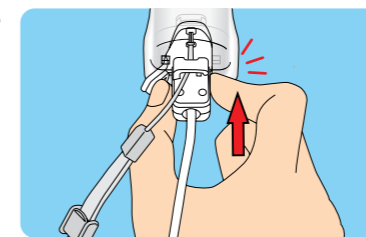
Be sure to install the Nunchuk as described. Use the connector hook on the Nunchuk plug with the wrist strap cord to prevent the Nunchuk plug from becoming separated from the External Extension connector on the remote and striking objects or people.

■ Connecting the Nunchuk

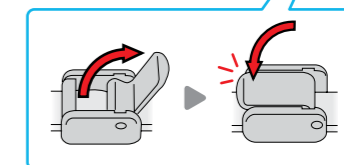
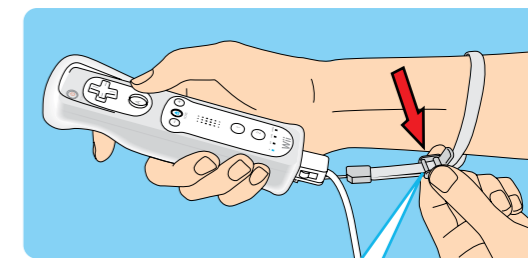
1. Feed the cord on the wrist strap through the connector hook.



2. Insert the Nunchuk plug into the External Extension Connector on the bottom of the remote until it "clicks" into place.

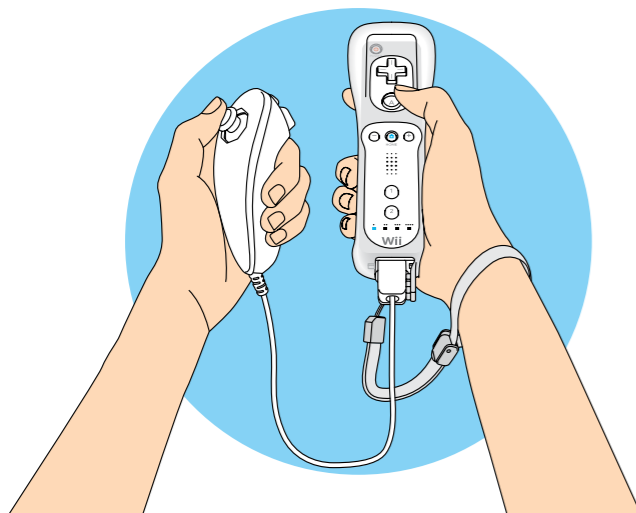


3. Open the lever on the strap lock and place your hand through the wrist strap. Hold the remote firmly in your hand. Slide the strap lock up so that the strap will not fall off your wrist. Do not over tighten the strap lock so that it's uncomfortable. It should just be tight enough to hold the wrist strap in place. Close the lever to hold the strap lock in place.

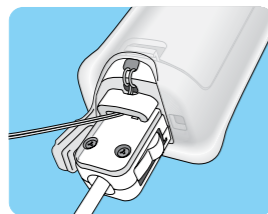


Using the Nunchuk

■ Holding the Nunchuk and Wii Remote Plus

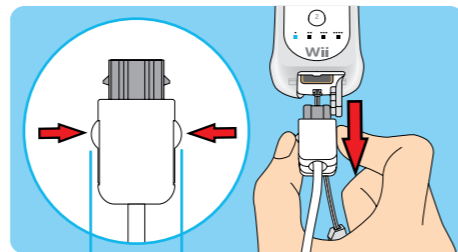


IMPORTANT: Make sure the wrist strap cord runs through the connector hook.



■ Disconnecting the Nunchuk

Press the Lock/Release Levers on the sides of the Nunchuk plug and pull the plug straight out of the External Extension Connector on the bottom of the remote.



Lock/Release Levers
Squeeze levers to remove plug from Wii Remote Plus.

Troubleshooting (Before seeking assistance, review the following problems and solutions.)

■ No picture on TV screen

- Make sure you have completed all steps, in the order that they appear, on the Quick Setup sheet included with your system.
- Make sure that all components of your setup are plugged into power outlets and that all components are turned ON.
- Make sure that cable connections are correctly installed and that all plugs are securely plugged into the appropriate connectors.
- Make sure that the INPUT settings are correct for your particular setup. (Review page 15 on Input Select information.)

■ No sound is heard or sound quality is poor

- Make sure the TV volume is not turned off or muted.
- Make sure that all audio connections are correctly installed and that all plugs are securely plugged into the appropriate connectors.
- Make sure the Wii AV Cable is plugged into the "input" connectors on the TV or VCR, not the "output" connectors.
- Make sure that the INPUT settings are correct for your particular setup. (Review page 15 on Input Select information.)
- The sound in some games doesn't begin until the game begins.
- If you have a mono TV or VCR and have left one of the audio cables unconnected you may not get all game sounds. Use a "Y" Adapter to get both left and right sound channels.
- If your TV/VCR have both mono and stereo options, make sure they match your setup.
- Check the instruction booklet for the game you are playing to see if there are volume controls or mono/stereo options that can be set from within the game.

■ Can't get past the Language Select screen

- Synchronize your Wii Remote Plus controllers using the procedure on pages 19-22.
- Review the Sensor Bar setup instructions on pages 11-14 to ensure proper placement and installation.

■ The console Power LED does not come on, or goes off during game play

- Make sure the AC Adapter is plugged into both the wall outlet and the back of the console.
- If the light is still off, disconnect the AC Adapter plug from the wall outlet, wait 2 minutes and plug it back into the outlet. Turn the console power ON.

■ System unable to read the Wii Game Disc or disc will not operate in console

NOTE: Game Discs will not start automatically. You must start disc games from the Disc Channel on the Channel Menu screen.

- Make sure the Game Disc is inserted correctly. The label side of the disc must face upwards.
- Check to be sure that the Game Disc is clean and in good condition. If dirty, wipe with a soft cloth, from the center to the outside. Do not wipe with a circular motion.
- Remove the Game Disc, and turn the power OFF and then ON. Reinsert the disc and try playing the game again.
- Check that the Game Disc will work on your version of the Wii. This system will only work with Game Discs made for use in the USA, Canada, Mexico and Latin America.

■ Wii Remote Plus lights blink, but don't stay lit (remote does not sync)

- Review the Sensor Bar setup instructions in this manual to ensure proper placement.
- Make sure batteries are not depleted.
- Try resetting the Wii Remote Plus - remove the batteries, wait one minute, then replace the batteries. Wait a few seconds, and then try synchronizing the remote again.
- If you are unable to re-sync the remote, try the following procedure:
 1. Turn off the power of the Wii mini console.
 2. Unplug the power cord from the wall outlet for a few seconds, then plug it back in again.
 3. Turn on the power of the Wii mini console.
 4. Synchronize your Wii Remote Plus controllers using the procedure on pages 19-22.

■ Wii Remote Plus or controller accessory buttons stick

Clean sticking buttons using the following procedure:

1. For the Wii Remote Plus, remove batteries and disconnect any accessories before cleaning.
2. Use an unused toothbrush and hot tap water. **Do not use boiling water, soap or detergent.**
3. Dip the toothbrush in hot water and shake off excess amount. Lightly scrub sticking buttons, working the bristles around sides of buttons and into cracks.
4. Dry controller with soft cloth or towel and let air dry for at least 2 hours.
5. Test buttons and repeat procedure if necessary. **Do not submerge in, or pour any type of liquid onto a controller or accessory.**

■ Wii Remote Plus doesn't properly respond to player motion (erratic hand cursor, can't swing bat, can't bowl, etc.)

- If the lights on your remote blink, but do not stay lit, see the first troubleshooting step on this page, at left.
- Review the Sensor Bar setup instructions in this manual to ensure proper placement.
- Make sure no objects are blocking the signals between the Sensor Bar, the Wii mini console, and the Wii Remote Plus.
- Make sure batteries are not depleted.
- Check and adjust the Sensor Bar sensitivity if necessary. (See the e-manual.)

The following conditions can interfere with the operation of the remote:

1. Using the remote too close or too far from the Sensor Bar. The optimal distance is between 3 and 10 feet.
2. Bright light sources, including sunlight, behind or near the TV, shining towards the remote or reflecting off the TV screen.
3. Highly reflective surfaces near the sensor bar.
4. Sources of infrared light in the gameplay area such as electric, propane or kerosene heaters, flames from fireplaces or candles, and stoves or other sources of heat.
5. Radio frequency interference may cause the Wii Remote Plus to work erratically. Check for and move or turn off wireless devices such as cordless phones, wireless computer keyboards or mice or other similar devices.

If you think any of these conditions are affecting the operation of the remote, try removing or reducing the source of interference.

■ When playing a game that includes Wii MotionPlus features, the Wii Remote Plus operates erratically or unexpectedly.

- The Wii Remote Plus may need to be recalibrated due to the following:
 1. Changing batteries in the Wii Remote Plus during gameplay.
 2. Moving Wii MotionPlus from a cold environment into a warm environment.

To recalibrate the Wii Remote Plus, place it on a flat horizontal surface with the buttons facing down. Wait for a few seconds and check the operation. Also, review the instruction manual for the game you are playing for more information.

NOTE: This procedure must be done during gameplay.

If your Wii system still does not operate correctly after trying the troubleshooting steps, DO NOT return the console to the store. Visit support.nintendo.com for assistance and additional troubleshooting and repair options or call 1-800-255-3700.

Regulations for Equipment Use in U.S.A. and Canada

FCC and Industry Canada Information

In order to comply with FCC radio-frequency radiation exposure guidelines for an uncontrolled exposure, this device and its antenna must not be co-located or operating in conjunction with any other antenna or transmitter. This device complies with Part 15 of the FCC Rules and RSS-210 of Industry Canada. Operation is subject to the following two conditions: (1) this device may not cause harmful interference, and (2) this device must accept any interference received, including interference that may cause undesired operation. Changes or modifications not expressly approved by the manufacturer could void the user's authority to operate this device.

NOTE: This equipment has been tested and found to comply with the limits for a Class B digital device, pursuant to part 15 of the FCC Rules. These limits are designed to provide reasonable protection against harmful interference in a residential installation. This equipment generates, uses and can radiate radio frequency energy and, if not installed and used in accordance with the instructions, may cause harmful interference to radio communications. However, there is no guarantee that interference will not occur in a particular installation. If this equipment does cause harmful interference to radio or television reception, which can be determined by turning the equipment off and on, the user is encouraged to try to correct the interference by one or more of the following measures:

- Reorient or relocate the receiving antenna.
- Increase the separation between the equipment and receiver.
- Connect the equipment into an outlet on a circuit different from that to which the receiver is connected.
- Consult the dealer or an experienced radio/TV technician or call Nintendo Consumer Service at 1-800-255-3700 for assistance.

The user may find the following booklet prepared by the Federal Communications Commission helpful: How to Identify and Resolve Radio-TV Interference Problems. This booklet is available from the U.S. Government Printing Office, Washington, D.C., 20402, Stock No. 004-000-00345-4.

The term IC before the certification/registration number only signifies that the Industry Canada technical specifications were met.

You may need only simple instructions to correct a problem with your product. Try our web site at support.nintendo.com or call our Consumer Assistance Hotline at 1-800-255-3700, rather than going to your retailer. Hours of operation are 6 a.m. to 7 p.m., Pacific Time, Monday - Sunday (times subject to change). If the problem cannot be solved with the troubleshooting information available online or over the telephone, you will be offered express factory service through Nintendo. Please do not send any products to Nintendo without contacting us first.

HARDWARE WARRANTY

Nintendo of America Inc. ("Nintendo") warrants to the original purchaser that the hardware product shall be free from defects in material and workmanship for twelve (12) months from the date of purchase. If a defect covered by this warranty occurs during this warranty period, Nintendo will repair or replace the defective hardware product or component, free of charge.* The original purchaser is entitled to this warranty only if the date of purchase is registered at point of sale or the consumer can demonstrate, to Nintendo's satisfaction, that the product was purchased within the last 12 months.

GAME & ACCESSORY WARRANTY

Nintendo warrants to the original purchaser that the product (games and accessories) shall be free from defects in material and workmanship for a period of three (3) months from the date of purchase. If a defect covered by this warranty occurs during this three (3) month warranty period, Nintendo will repair or replace the defective product, free of charge.*

SERVICE AFTER EXPIRATION OF WARRANTY

Please try our web site at support.nintendo.com or call the Consumer Assistance Hotline at 1-800-255-3700 for troubleshooting information and repair or replacement options and pricing.*

*In some instances, it may be necessary for you to ship the complete product, FREIGHT PREPAID AND INSURED FOR LOSS OR DAMAGE, to Nintendo. Please do not send any products to Nintendo without contacting us first.

WARRANTY LIMITATIONS

THIS WARRANTY SHALL NOT APPLY IF THIS PRODUCT: (a) IS USED WITH PRODUCTS NOT SOLD OR LICENSED BY NINTENDO (INCLUDING, BUT NOT LIMITED TO, NON-LICENSED GAME ENHANCEMENT AND COPIER DEVICES, ADAPTERS, SOFTWARE, AND POWER SUPPLIES); (b) IS USED FOR COMMERCIAL PURPOSES (INCLUDING RENTAL); (c) IS MODIFIED OR TAMPERED WITH; (d) IS DAMAGED BY NEGLIGENCE, ACCIDENT, UNREASONABLE USE, OR BY OTHER CAUSES UNRELATED TO DEFECTIVE MATERIALS OR WORKMANSHIP; OR (e) HAS HAD THE SERIAL NUMBER ALTERED, DEFACED OR REMOVED. ANY APPLICABLE IMPLIED WARRANTIES, INCLUDING WARRANTIES OF MERCHANTABILITY AND FITNESS FOR A PARTICULAR PURPOSE, ARE HEREBY LIMITED IN DURATION TO THE WARRANTY PERIODS DESCRIBED ABOVE (12 MONTHS OR 3 MONTHS, AS APPLICABLE). IN NO EVENT SHALL NINTENDO BE LIABLE FOR CONSEQUENTIAL OR INCIDENTAL DAMAGES RESULTING FROM THE BREACH OF ANY IMPLIED OR EXPRESS WARRANTIES. SOME STATES DO NOT ALLOW LIMITATIONS ON HOW LONG AN IMPLIED WARRANTY LASTS OR EXCLUSION OF CONSEQUENTIAL OR INCIDENTAL DAMAGES, SO THE ABOVE LIMITATIONS MAY NOT APPLY TO YOU.

This warranty gives you specific legal rights. You may also have other rights which vary from state to state or province to province. Nintendo's address is: Nintendo of America Inc., P.O. Box 957, Redmond, WA 98073-0957 U.S.A. This warranty is only valid in the United States and Canada.

Rev. R1

Unlicensed Accessories

Do not attach unlicensed accessories to the Wii Remote Plus, as the use of unlicensed accessories may lead to injury to yourself or others and may cause performance issues and/or damage to the system. Use of any such unlicensed accessories will invalidate your Nintendo product warranty.

Error Messages

If an error occurs, a message like the following may appear on the TV screen. Proceed according to the following table.

Error Message	Try This
An error has occurred. Turn the console off, then press the OPEN Button and remove the disc. Refer to the console manual for help troubleshooting.	First turn the Wii mini console power OFF, and remove the AC adapter's AC plug from the power socket. Next, check whether the disc is dirty or scratched. If it is dirty, gently wipe with a soft cloth from the center to the outside. Wait about 5 minutes. Then plug the AC adapter's AC plug back into the power socket and turn the console power on. If the same message still appears, the console may be damaged. Turn the console off immediately. Remove the AC adapter's AC plug from the plug, and visit support.nintendo.com for additional troubleshooting or call 1-800-255-3700.
Wii Remote error. For details read the console manual.	See Wii Remote Plus troubleshooting in this manual.
Could not read the disc. For details read the console manual.	There may be dirt or scratches on the disc or internal lens. First remove the disc and gently wipe from the center to the outside with a soft cloth. Then re-insert the disc in the Wii mini console and turn the power on again. If the same error message still appears, visit support.nintendo.com for additional troubleshooting or call 1-800-255-3700.
Wii console save memory is corrupted. For details read the Wii console manual.	Wii mini console save memory is corrupted. Visit support.nintendo.com for additional troubleshooting or call 1-800-255-3700.

Error Message	Try This
Abnormal free space in Wii console save memory. For details read the Wii console manual.	Delete the save data for the channel that is running. If the same error message still appears, visit support.nintendo.com for additional troubleshooting or call 1-800-255-3700.
Abnormal number of files in Wii console save memory. For details read the Wii console manual.	Delete the save data for the channel that is running. If the same error message still appears, visit support.nintendo.com for additional troubleshooting or call 1-800-255-3700.

Error Codes

If an error code appears during operation of the Wii system, please review the following tables and try the recommended solutions.

Error Code	Try This
110210 110211 110212 110213 205926 205927 205928	These errors indicate a hardware issue. Please contact Nintendo Consumer Service at 1-800-255-3700 for assistance.

Free Manuals Download Website

<http://myh66.com>

<http://usermanuals.us>

<http://www.somanuals.com>

<http://www.4manuals.cc>

<http://www.manual-lib.com>

<http://www.404manual.com>

<http://www.luxmanual.com>

<http://aubethermostatmanual.com>

Golf course search by state

<http://golfingnear.com>

Email search by domain

<http://emailbydomain.com>

Auto manuals search

<http://auto.somanuals.com>

TV manuals search

<http://tv.somanuals.com>