

Nokia Bluetooth Headset BH-109

Issue 1.0

Introduction

About your headset

With Nokia Bluetooth Headset BH-109, you can handle calls hands-free, even when you are using two mobile devices at the same time.

For support, go to www.nokia.com/support.

The surface of this product is nickel-free.

Warning:

This product may contain small parts. Keep them out of the reach of small children.

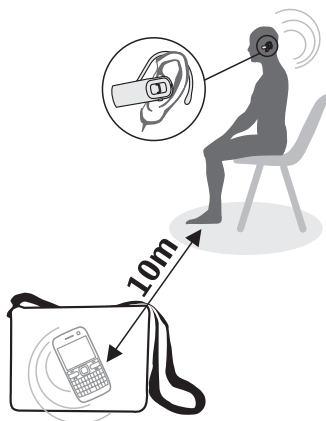
Parts of the product are magnetic. Metallic materials may be attracted to the product. Do not place credit cards or other magnetic storage media near the product, because information stored on them may be erased.

Read this user guide carefully before using the product. Also, read the user guide for the device that you connect to the product.

About Bluetooth connectivity

You can use Bluetooth to make a wireless connection to other compatible devices, such as mobile devices.

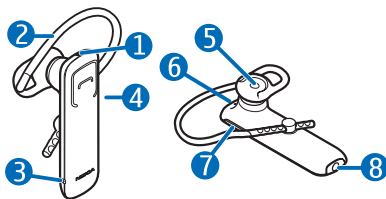
Devices do not need to be in direct line-of-sight, but they must be within 10 metres (33 feet) of each other. The connection may be affected by obstructions such as walls or other electronic devices.



This device is compliant with Bluetooth Specification 2.1 + EDR supporting the following profiles: Headset Profile 1.1 and Hands-Free Profile 1.5. Check with the manufacturers of other devices to determine their compatibility with this device.

Get started

Keys and parts



- 1 Power key
- 2 Earloop
- 3 Microphone
- 4 Call key
- 5 Earpiece
- 6 Indicator light
- 7 Volume key
- 8 Charger connector

Charge the battery

Before using the headset, you must charge the battery.

Warning:

Use only chargers approved by Nokia for use with this particular model. The use of any other types may invalidate any approval or warranty, and may be dangerous. Use of unapproved chargers may present a risk of fire, explosion, or other hazard.

When you unplug a charger, hold and pull the plug, not the cord.

- 1 Connect the charger to a wall outlet.
- 2 Connect the charger cable to the charger connector in the headset. The red indicator light turns green when the battery is fully charged.
- 3 Disconnect the charger from the headset, then from the wall outlet.

The fully charged battery has power for up to 8 hours of talk time and up to 200 hours of standby time.

When the battery charge is low, the headset beeps every 5 minutes and the red indicator light flashes.

Check the battery charge

With the headset connected to the mobile device, press the power key. Green light indicates sufficient charge level. If the light is yellow, you may need to recharge the battery soon. If the light is red, recharge the battery.

Switch the headset on or off

Press and hold the power key for 2 seconds.

When switched on, the headset beeps, and a green indicator light flashes once. The headset tries to connect to a paired mobile device.

If the headset is not connected to a device within 30 minutes, it switches off.

When switched off, the headset beeps, and a red indicator light flashes once.

Pair and connect the headset

With pairing, you can control which devices are allowed to connect to your headset.

Before using the headset, you must pair and connect it to a compatible device.

- 1 Switch the headset off and the compatible device on.

- If you have never paired the headset with a device, or you have emptied the paired devices list, switch the headset on. If you have previously paired your headset with another device, press and hold the power key for 5 seconds. The headset enters pairing mode, and the green indicator light starts to flash quickly.
- Within 3 minutes, activate Bluetooth on the device, and set it to search for Bluetooth devices. For details, see the user guide of the device.
- Select the headset from the list of found devices.
- If required, enter the passcode **0000**.

You can pair your headset with 8 compatible devices, but you can only connect it to a maximum of 2 devices at the same time.

With some mobile devices, you may need to make the connection separately after pairing.

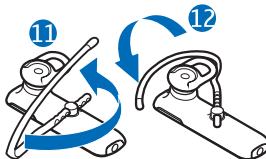
Connect the headset to the last used device manually

Press and hold the call key for 2 seconds, if no other device is connected, or go to the Bluetooth menu of the device.

Wear the headset



Slide the earloop behind your ear (9), and gently push the earpiece against your ear. Carefully bend the earloop around your ear for the best fit. Push or pull the earloop to set its length. Point the headset towards your mouth (10).



The headset is ready to be used on the right ear. To use the headset on the left ear, rotate the earloop so that it is to the left of the Nokia logo (11 and 12).

Make calls

Make and receive calls

Make a call

When the headset is connected to your compatible mobile device, make a call normally using your mobile device.

Answer or end a call

Press the call key.

Reject a call

Press the call key twice.

Switch a call between your headset and mobile device

During a call, press the call key for 2 seconds.

You can redial the number you last called or make a call by using your voice, if your mobile device supports these features with the headset.

Redial the last called number

When no call is in progress, press the call key twice.

Activate voice dialling

When no call is in progress, press and hold the call key for 2 seconds, and follow the user guide of your mobile device.

Change the volume

Use the volume key. To change the volume quickly, press and hold the volume key.

Switch between calls

If you get two calls at the same time, you can handle both calls hands-free.

If your mobile device uses the call waiting function (network service), and supports the Bluetooth Hands-Free Profile 1.5, you can switch between two calls using the headset.

Put the call on hold, and answer a waiting call

Press and hold the call key for 2 seconds.

Switch between the calls

Press and hold the call key for 2 seconds.

End the call and answer the other one

Press the call key.

Pair and connect the headset to two devices

You can connect your headset to two devices, for example, when you want to make calls using both your personal and your work mobile device.

Switch on the headset, activate pairing mode, and pair the headset with the first device. Switch off the headset, activate pairing mode, and pair it with the second device. To connect the headset to the two devices, switch the headset off and back on.

Switch back to one device only

- 1 Switch off the headset.
- 2 Press and hold the power key for 5 seconds. The green indicator light starts to flash quickly.
- 3 Press and hold the power key and the volume down key for 5 seconds. The yellow indicator light flashes once.

Switch to two devices again

- 1 Switch off the headset.
- 2 Press and hold the power key for 5 seconds. The green indicator light starts to flash quickly.
- 3 Press and hold the power key and volume up key for 5 seconds. The green indicator light flashes once.

Handle calls from two devices

If your headset is connected to two mobile devices, you can handle calls from both at once.

End the call, and answer a call on the other device

Press the call key.

Put the call on hold, and answer a call on the other device

Press and hold the call key for 2 seconds.

Switch between the calls

Press and hold the call key for 2 seconds.

End the ongoing call, and activate the hold call

Press the call key.

If you want to redial or use voice dialling, the call is made on the device you last used with the headset.

Settings

Switch the lights off

You can switch the indicator lights off if you do not want them to be shown, for example, during a call.

When the headset is connected to a device, press and hold the call key and the volume down key for 5 seconds. The yellow indicator light flashes once. Some indication lights may still be shown, for example, when the battery charge is low.

Switch the lights back on

Press and hold the call key and the volume up key for 5 seconds. The green indicator light flashes once.

Clear the pairing

You can manually empty the paired devices list from your headset.

Switch the headset off, and press and hold the power key and the call key for 9 seconds.

The red and green indicator lights alternate. You can pair the headset with a device, if desired.

Troubleshooting

- Cannot connect the headset to a compatible device? Make sure the headset is charged, switched on, and paired with the device.
- Did the headset stop functioning even though it is charged? Plug the charger into a wall outlet, and while you press and hold the power key, connect the headset to the charger.

Product and safety information

Battery and charger information

This device has an internal, nonremovable, rechargeable battery. Do not attempt to remove the battery from the device as you may damage the device. Take the device to the nearest authorised service facility for replacement of the battery.

This device is intended for use when supplied with power from the following chargers: AC-3, AC-4, AC-5, AC-8, DC-4, and DC-9. The exact charger model number may vary depending on the type of plug. The plug variant is identified by one of the following: E, X, AR, U, A, C, K, or B.

The battery can be charged and discharged hundreds of times, but it will eventually wear out. When the operating times are noticeably shorter than normal, take the device to the nearest authorised service facility for battery replacement.

Recharge your battery only with Nokia approved chargers designated for this device.

Download from Www.Somanuals.com. All Manuals Search And Download.

If a battery is being used for the first time or if the battery has not been used for a prolonged period, it may be necessary to connect the charger, then disconnect and reconnect it to begin charging the battery. If the battery is completely discharged, it may take several minutes before the charging indicator light is displayed.

When your charger is not in use, unplug it from the electrical plug and the device. Do not leave a fully charged battery connected to a charger, as overcharging may shorten the battery's lifetime. If left unused, a fully charged battery will lose its charge over time.

Always keep the battery between 15°C and 25°C (59°F and 77°F). Extreme temperatures reduce the capacity and lifetime of the battery. A device with a hot or cold battery may not work temporarily.

Do not dispose of batteries in a fire as they may explode. Dispose of batteries according to local regulations. Recycle when possible. Do not dispose as household waste.

Never use any charger that is damaged.

Operating times are estimates only. Actual performance depends on many factors such as device settings selected, device features being used (or running in the background), battery condition and ambient temperature.

Take care of your device

Handle your device, battery, charger and accessories with care. The following suggestions help you protect your warranty coverage.

- Keep the device dry. Precipitation, humidity, and all types of liquids or moisture can contain minerals that corrode electronic circuits.
- Do not use or store the device in dusty or dirty areas. Moving parts and electronic components can be damaged.
- Do not store the device in high temperatures. High temperatures can shorten the life of the device, damage the battery, and warp or melt plastics.
- Do not store the device in cold temperatures. When the device warms to its normal temperature, moisture can form inside the device and damage electronic circuits.
- Do not attempt to open the device.
- Unauthorised modifications may damage the device and violate regulations governing radio devices.
- Do not drop, knock, or shake the device. Rough handling can break internal circuit boards and mechanics.
- Only use a soft, clean, dry cloth to clean the surface of the device.
- Do not paint the device. Paint can clog the moving parts and prevent proper operation.

Recycle

Always return your used electronic products, batteries, and packaging materials to dedicated collection points. This way you help prevent uncontrolled waste disposal and promote the recycling of materials. Check product environmental information and how to recycle your Nokia products at www.nokia.com/werecycle, or with a mobile device, nokia.mobi/werecycle.

Crossed-out wheeled-bin symbol



The crossed-out wheeled-bin symbol on your product, battery, literature, or packaging reminds you that all electrical and electronic products, batteries, and accumulators must be taken to separate collection at the end of their working life. This requirement applies in the European Union. Do not dispose of these products as unsorted municipal waste. For more information on the environmental attributes of your device, see www.nokia.com/ecodeclaration.

Copyright and other notices

DECLARATION OF CONFORMITY

Hereby, NOKIA CORPORATION declares that this BH-109 product is in compliance with the essential requirements and other relevant provisions of Directive 1999/5/EC. A copy of the Declaration of Conformity can be found at http://www.nokia.com/phones/declaration_of_conformity/.

CE 0560

© 2010 Nokia. All rights reserved.

Nokia, Nokia Connecting People, and the Nokia Original Accessories logo are trademarks or registered trademarks of Nokia Corporation. Nokia tune is a sound mark of Nokia Corporation. Other product and company names mentioned herein may be trademarks or tradenames of their respective owners.

Reproduction, transfer, distribution, or storage of part or all of the contents in this document in any form without the prior written permission of Nokia is prohibited. Nokia operates a policy of continuous development. Nokia reserves the right to make changes and improvements to any of the products described in this document without prior notice.

Bluetooth is a registered trademark of Bluetooth SIG, Inc.

The contents of this document are provided "as is". Except as required by applicable law, no warranties of any kind, either express or implied, including, but not limited to, the implied warranties of merchantability and fitness for a particular purpose, are made in relation to the accuracy, reliability or contents of this document. Nokia reserves the right to revise this document or withdraw it at any time without prior notice.

To the maximum extent permitted by applicable law, under no circumstances shall Nokia or any of its licensors be responsible for any loss of data or income or any special, incidental, consequential or indirect damages howsoever caused.

The availability of particular products may vary by region. Please check with your Nokia dealer for details. This device may contain commodities, technology or software subject to export laws and regulations from the US and other countries. Diversion contrary to law is prohibited.

/Issue 1.0 EN

Free Manuals Download Website

<http://myh66.com>

<http://usermanuals.us>

<http://www.somanuals.com>

<http://www.4manuals.cc>

<http://www.manual-lib.com>

<http://www.404manual.com>

<http://www.luxmanual.com>

<http://aubethermostatmanual.com>

Golf course search by state

<http://golfingnear.com>

Email search by domain

<http://emailbydomain.com>

Auto manuals search

<http://auto.somanuals.com>

TV manuals search

<http://tv.somanuals.com>