

NOKIA C020/C021: USING WITH CARDWIZARD

QUICK GUIDE

NOKIA

© Nokia Internet Communications Inc. | Filename: C02xQG_cardwizard.pdf | Date: 04.01.00
INTERNET

Contents

- 1. INTRODUCTION 1
- 2. CLEARING THE HARDWARE PROFILE..... 1

Legal Notice

Copyright © Nokia Internet Communications Inc 1999. All rights reserved. Nokia and Nokia Connecting People are registered trademarks of Nokia Corporation. Windows is a registered trademark of Microsoft Corporation. Other product and company names mentioned herein may be trademarks or trade names of their respective owners.

Nokia operates a policy of continuous development. Therefore we reserve the right to make changes and improvements to any of the products described in this document without prior notice.

Under no circumstances shall Nokia be responsible for any loss of data, or income or any direct, special, incidental, consequential or indirect damages howsoever caused.



1. INTRODUCTION

This quick guide tells you what you should do if you have inserted the Nokia C020 or C021 Wireless LAN Card into a computer running Windows 95 with SystemSoft CardWizard before running the setup program.

If you insert the card for the first time before running the setup program, the system detects new hardware and asks for drivers. Even if you cannot find the drivers, the card is not detected as a new card when setup prompts you to insert the card.

2. CLEARING THE HARDWARE PROFILE

To solve the problem, you have to clear the previous hardware profile and install the card again. In IBM laptops, the system uses SystemSoft CardWizard to handle Plug'n'Play devices. Other laptops use similar software.

To clear the hardware profile and reinstall the Nokia C020 Wireless LAN Card

1. To clear the hardware profile and to install the card again, you have to run SystemSoft CardWizard on your laptop. In Windows 95, you can usually start it by clicking the **Start** menu and then selecting **Programs**. Next, select **ThinkPad**, then **CardWorks**, and finally **CardWizard**.
2. The SystemSoft CardWizard window appears on the screen. If Nokia's wireless LAN card is still inserted, the program displays the slot where it is located. If Nokia's wireless LAN card is not inserted, you should insert it again now. There may be a question mark ("?") after the name of the card.

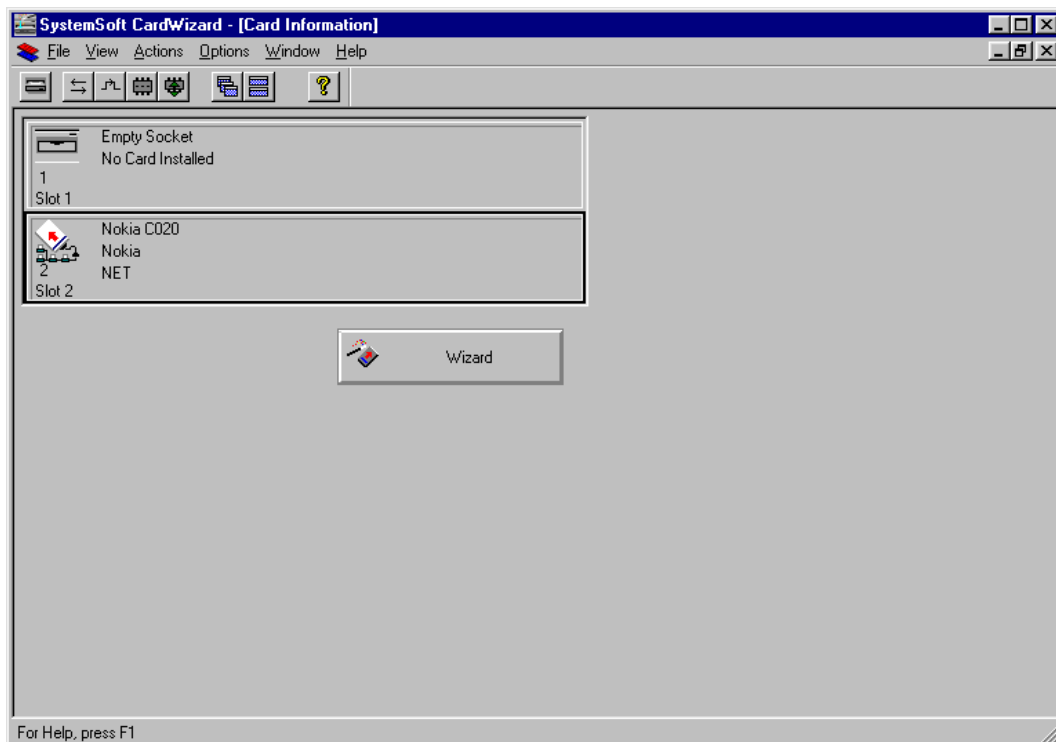


Figure 1: The SystemSoft CardWizard application main window.

3. In the program window, select the card you wish to configure, and then select **Properties** from the **View** menu.

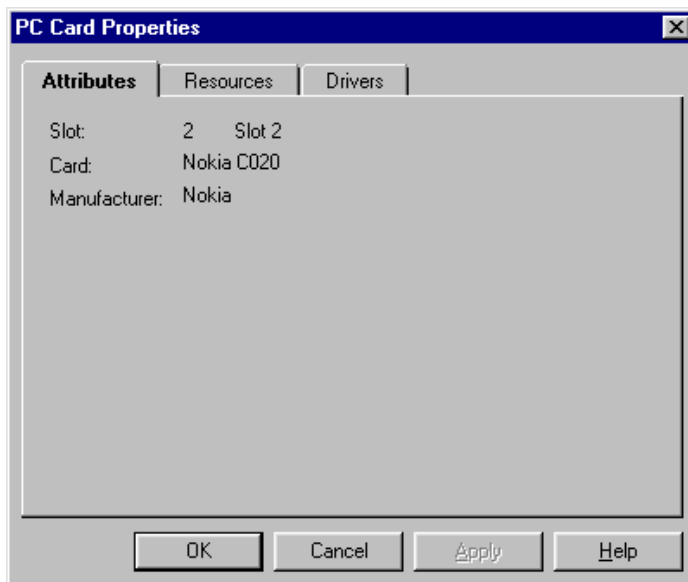


Figure 2: The PC Card Properties dialog box.

4. The **PC Card Properties** dialog box opens. Select the **Drivers** tab.

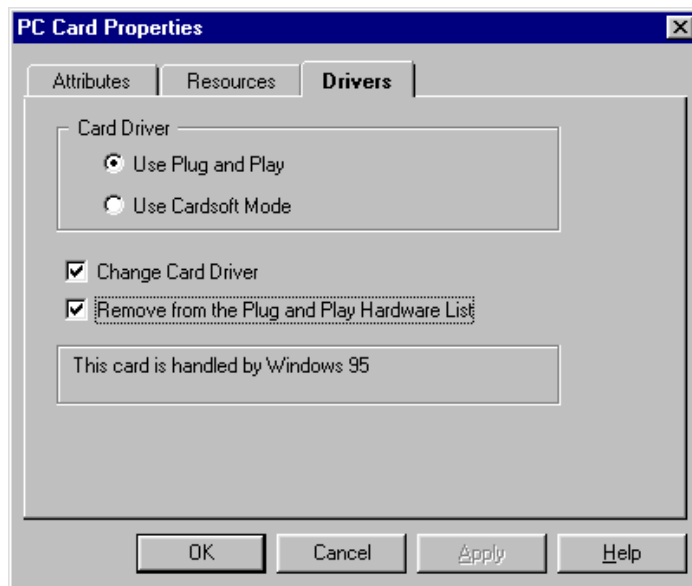


Figure 3: The Drivers tab in the PC Card Properties dialog box.

5. Select the **Use Plug and Play** radio button. Then select the **Change Card Driver** and **Remove from the Plug and Play Hardware List** check boxes.
6. Click **OK**. It may take a while for CardWizard to reset the hardware settings.
7. When CardWizard has finished, remove the card and run the installation program on the CD-ROM.



Warning: Do not reinsert the card before you are prompted to do so!

Free Manuals Download Website

<http://myh66.com>

<http://usermanuals.us>

<http://www.somanuals.com>

<http://www.4manuals.cc>

<http://www.manual-lib.com>

<http://www.404manual.com>

<http://www.luxmanual.com>

<http://aubethermostatmanual.com>

Golf course search by state

<http://golfingnear.com>

Email search by domain

<http://emailbydomain.com>

Auto manuals search

<http://auto.somanuals.com>

TV manuals search

<http://tv.somanuals.com>