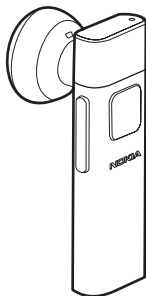


Nokia Bluetooth Headset BH-804 User Guide



9210506
Issue 1 EN

DECLARATION OF CONFORMITY

Hereby, NOKIA CORPORATION declares that this BH-804 product is in compliance with the essential requirements and other relevant provisions of Directive 1999/5/EC. A copy of the Declaration of Conformity can be found at http://www.nokia.com/phones/declaration_of_conformity/.

CE 0984

© 2008 Nokia. All rights reserved.

Nokia, Nokia Connecting People and the Nokia Original Accessories logo are registered trademarks of Nokia Corporation. Other product and company names mentioned herein may be trademarks or tradenames of their respective owners.

Reproduction, transfer, distribution, or storage of part or all of the contents in this document in any form without the prior written permission of Nokia is prohibited.

Bluetooth is a registered trademark of Bluetooth SIG, Inc.

Nokia operates a policy of ongoing development. Nokia reserves the right to make changes and improvements to any of the products described in this document without prior notice.

To the maximum extent permitted by applicable law, under no circumstances shall Nokia or any of its licensors be responsible for any loss of data or income or any special, incidental, consequential or indirect damages howsoever caused.

The contents of this document are provided "as is". Except as required by applicable law, no warranties of any kind, either express or implied, including, but not limited to, the implied warranties of merchantability and fitness for a particular purpose, are made in relation to the accuracy, reliability or contents of this document. Nokia reserves the right to revise this document or withdraw it at any time without prior notice.

The availability of particular products may vary by region. Please check with your Nokia dealer for details.

Export controls

This device may contain commodities, technology or software subject to export laws and regulations from the US and other countries. Diversion contrary to law is prohibited.

9210506/Issue 1 EN

Contents

1. Introduction	5	3. Basic use	12
Bluetooth wireless technology.....	5	Place the headset on the ear.....	12
2. Get started	7	Carry the headset in the strap	13
Keys and parts.....	7	Calls	13
Chargers.....	7	Adjust the volume.....	14
Charge the battery	8	Switch a call between headset and mobile device	14
Switch the headset on or off.....	9	Clear settings or reset.....	15
Pair the headset	10	4. Battery information	16
Disconnect the headset	11	Care and maintenance.....	18
Reconnect the headset	11		
Troubleshooting	11		

1. Introduction

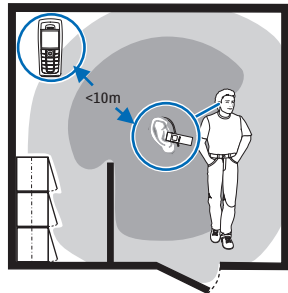
With the Nokia Bluetooth Headset BH-804, you can make and answer calls while on the move. You can use the headset with compatible devices that support Bluetooth wireless technology.

Read this user guide carefully before using the headset. Also, read the user guide for your mobile device that you connect to the headset. For more information, see www.nokia.com/support or your local Nokia website.

This product may contain small parts. Keep them out of the reach of small children.

■ Bluetooth wireless technology

Bluetooth wireless technology allows you to connect compatible devices without cables. The headset and the other device do not need to be in line of sight, but they should be within 10 metres (33 feet) of each other. The closer the headset and the other device are to each other, the better is the performance. The optimal operating range is shown in dark grey in the picture. The connection is subject to



I n t r o d u c t i o n

interference from distance and obstructions (shown in light grey) or other electronic devices.

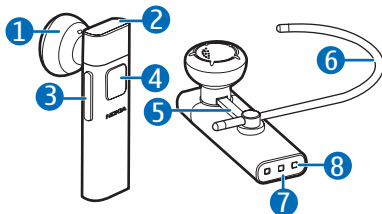
The headset is compliant with the Bluetooth Specification 2.0 + EDR supporting the Headset Profile 1.1 and Hands-Free Profile 1.5. Check with the manufacturers of other devices to determine their compatibility with this device.

2. Get started

■ Keys and parts

The headset contains the following parts:

1. Earpiece
2. Indicator light
3. Volume keys
4. Multifunction key
5. Earloop holder
6. Earloop
7. Microphone
8. Charging contacts



Before using the headset, you must charge the battery and pair the headset with a compatible device.

Parts of the headset, desk stand, and charger adapter are magnetic. Metallic materials may be attracted to these devices. Do not place credit cards or other magnetic storage media near these devices, because information stored on them may be erased.

■ Chargers

This device is intended for use when supplied with power from the AC-6 and DC-6 chargers.



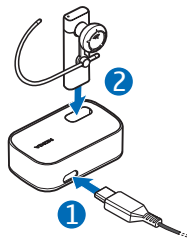
Warning: Use only chargers approved by Nokia for use with this particular enhancement. The use of any other types may invalidate any approval or warranty, and may be dangerous.

When you disconnect the power cord of any enhancement, grasp and pull the plug, not the cord.

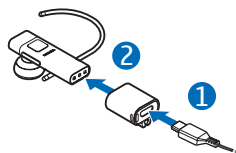
■ Charge the battery

Before charging the battery, carefully read "Battery information", p. 16.

1. Connect the charger to a wall outlet.
2. To charge the headset in the desk stand (if provided with the headset), connect the charger cable to the charger connector at the side of the desk stand (1), and place the lower end of the headset into the slot on the desk stand (2). The headset switches off.



To charge the headset using the charger adapter (if provided with the headset), connect the charger cable to the charger connector on the adapter (1), and insert the lower end of the headset into the adapter (2). The headset switches off.



Tip: To keep the adapter attached to the charger cable, push the cable into the slot on the adapter.

The red indicator light is displayed during charging. Charging the battery fully may take up to 1 hour with the AC-6 or DC-6 charger.

3. When the battery is fully charged, the green indicator light is displayed. Remove the headset from the desk stand or remove the adapter.
4. Disconnect the charger from the wall outlet.

The battery can also be charged through the USB port of a compatible PC using the Nokia Connectivity Cable CA-101 (sold separately). Connect one end of the cable to the desk stand or charger adapter and the other end to the USB port on the PC.

The fully charged battery has power for up to 4 hours of talk time or up to 150 hours of standby time.

When the battery is discharged, the headset beeps about every minute, and the red indicator light flashes.

■ Switch the headset on or off

To switch on, press and hold the multifunction key for about 2 seconds. The headset beeps, and the green indicator light is displayed. The headset first tries to connect to the last used mobile device and then, if the connection fails, to one of the other paired devices. When the headset is connected to a device and is ready for use, the blue indicator light flashes slowly. If the headset has not been paired with a device, it automatically enters the pairing mode (see "Pair the headset", p. 10).

To switch off, press and hold the multifunction key for about 4 seconds. The headset beeps, and the red indicator light is briefly displayed. If the

headset is not connected to a device within about 30 minutes, it switches off automatically.

■ Pair the headset

1. Ensure that your mobile device is on and the headset is off.
2. To pair the headset if it has not been previously paired with a device, switch on the headset. The headset enters the pairing mode, and the blue indicator light starts to flash quickly.

To pair the headset if it has been previously paired with another device, ensure that the headset is switched off, and press and hold the multifunction key (for about 4 seconds) until the blue indicator light starts to flash quickly.

3. Activate the Bluetooth feature on your device, and set it to search for Bluetooth devices. For details, see the user guide of your device.
4. Select the headset (Nokia BH-804) from the list of found devices.
5. Enter 0000 to pair and connect the headset to your device, if your device asks you to do so. In some devices, you may need to make the connection separately after pairing. For details, see the user guide of your device.

If pairing is successful, the headset appears in the menu of the mobile device where you can view the currently paired Bluetooth devices.

When the headset is connected to your device and is ready for use, the blue indicator light flashes slowly.

Disconnect the headset

To disconnect the headset from your mobile device, switch off the headset, or disconnect it in the Bluetooth menu of the device.

You do not need to delete pairing with the headset to disconnect it.

Reconnect the headset

If you disconnect the headset from your mobile device, you can reconnect the headset to the device without switching the headset off and back on. Press and hold the multifunction key for about 2 seconds, or make the connection in the Bluetooth menu of your device.

You may be able to set your mobile device so that the headset connects to it automatically. To activate this feature in a Nokia device, change the paired device settings in the Bluetooth menu.

■ Troubleshooting

If you cannot connect the headset to your mobile device, ensure the following:

- The headset is charged, switched on, and paired with your device.
- The Bluetooth feature is activated on your device.
- The headset is within 10 metres (33 feet) of your device and that there are no obstructions between the headset and the device, such as walls, or other electronic devices.

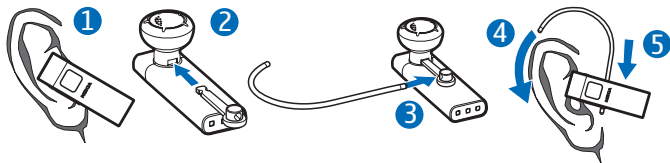
3. Basic use

■ Place the headset on the ear

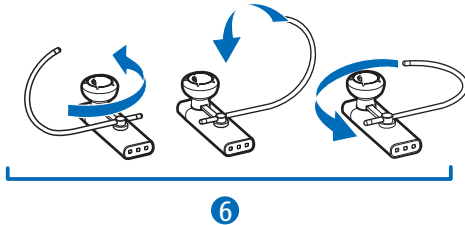
The headset is provided with an earloop that you can use for a better fit on your ear.

To use the headset without the earloop, gently push the earpiece into your ear (1), and point the headset toward your mouth.

To use the headset with the earloop, insert the earloop holder into the slot at the base of the earpiece (2), and insert the earloop into the opening on the holder (3). To wear the headset on the right ear, rotate the earloop so that the loop is to the right of the Nokia logo. Slide the earloop over your ear (4), and push or pull the earloop to set its length. Gently push the earpiece into your ear, and point the headset toward your mouth (5).



To use the headset on the left ear, rotate the earloop so that it is to the left of the Nokia logo (6).



To detach the earloop, gently pull it from the headset.

■ Carry the headset in the strap

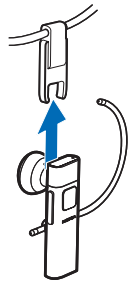
The headset may be provided with a carrying strap. You can use the strap to wear the headset around your neck.

To attach the headset to the strap, insert the headset into the catch at the end of the strap.

To detach the headset, pull it from the catch.

■ Calls

To make a call, use your mobile device in the normal way when the headset is connected to it. The blue indicator light flashes during the call.



Basic use

To redial the number you last called (if your mobile device supports this feature with the headset), when no call is in progress, press the multifunction key twice.

To activate voice dialling (if your mobile device supports this feature with the headset), when no call is in progress, press and hold the multifunction key for about 2 seconds until the mobile device starts voice dialling, and proceed as described in the user guide of the device.

When you receive a call, the blue indicator light flashes quickly, and you hear a ringing tone through the headset. To answer the call, press the multifunction key, or use the keys of the mobile device. To reject the call, press the multifunction key twice, or use the keys of the mobile device.

To end a call, press the multifunction key, or use the keys of the mobile device.

■ Adjust the volume

To adjust the headset volume, press either volume key.

■ Switch a call between headset and mobile device

To switch a call from the headset to a connected device, press and hold the multifunction key for about 4 seconds (the headset switches off), or use the keys of your device.

To switch the call back to the headset, switch on the headset (and connect it to your paired device), or press and hold the multifunction key for about 2 seconds (when the headset is switched on).

■ Clear settings or reset

To clear all the pairing settings from the headset, switch off the headset, and press and hold the multifunction key (for over 8 seconds) until the red, green, and blue indicator lights start to alternate. After the settings are cleared, the headset enters the pairing mode.

To reset the headset if it stops functioning, even though it is charged, connect the headset to a charger that is plugged into a wall outlet (see "Charge the battery", p. 8). The reset does not clear the pairing settings.

4. Battery information

This device has an internal, nonremovable, rechargeable battery. Do not attempt to remove the battery from the device as you may damage the device. The battery can be charged and discharged hundreds of times, but it will eventually wear out. Recharge your battery only with Nokia approved chargers designated for this device. Use of an unapproved charger may present a risk of fire, explosion, leakage, or other hazard.

If a battery is being used for the first time or if the battery has not been used for a prolonged period, it may be necessary to connect the charger, then disconnect and reconnect it to begin charging the battery. If the battery is completely discharged, it may take several minutes before the charging indicator light is displayed.

Unplug the charger from the electrical plug and the device when not in use. Do not leave a fully charged battery connected to a charger, since overcharging may shorten its lifetime. If left unused, a fully charged battery will lose its charge over time.

Always try to keep the battery between 15°C and 25°C (59°F and 77°F). Extreme temperatures reduce the capacity and lifetime of the battery. A device with a hot or cold battery may not work temporarily. Battery performance is particularly limited in temperatures well below freezing.

Do not dispose of batteries in a fire as they may explode. Batteries may also explode if damaged.

Never use any charger that is damaged.



Important: Battery talk and standby times are estimates only and depend on network conditions, features used, battery age and condition, temperatures to which battery is exposed, and many other factors. The

amount of time a device is used for calls will affect its standby time. Likewise, the amount of time that the device is turned on and in the standby mode will affect its talk time.

Care and maintenance

Your device is a product of superior design and craftsmanship and should be treated with care. The following suggestions will help you protect your warranty coverage.

- Keep the device dry. Precipitation, humidity, and all types of liquids or moisture can contain minerals that will corrode electronic circuits. If your device does get wet, allow it to dry completely.
- Do not use or store the device in dusty, dirty areas. Its moving parts and electronic components can be damaged.
- Do not store the device in hot areas. High temperatures can shorten the life of electronic devices, damage batteries, and warp or melt certain plastics.
- Do not store the device in cold areas. When the device returns to its normal temperature, moisture can form inside the device and damage electronic circuit boards.
- Do not attempt to open the device.
- Do not drop, knock, or shake the device. Rough handling can break internal circuit boards and fine mechanics.
- Do not use harsh chemicals, cleaning solvents, or strong detergents to clean the device.
- Do not paint the device. Paint can clog the moving parts and prevent proper operation.

These suggestions apply equally to your device, charger, or any enhancement. If any device is not working properly, take it to the nearest authorised service facility for service.



Disposal

The crossed-out wheeled-bin symbol on your product, literature, or packaging reminds you that all electrical and electronic products, batteries, and accumulators must be taken to separate collection at the end of their working life. This requirement applies to the European Union and other locations where separate collection systems are available. Do not dispose of these products as unsorted municipal waste.

By returning the products to collection you help prevent uncontrolled waste disposal and promote the reuse of material resources. More detailed information is available from the product retailer, local waste authorities, national producer responsibility organizations, or your local Nokia representative. For the product Eco-Declaration or instructions for returning your obsolete product, go to country-specific information at www.nokia.com.

Free Manuals Download Website

<http://myh66.com>

<http://usermanuals.us>

<http://www.somanuals.com>

<http://www.4manuals.cc>

<http://www.manual-lib.com>

<http://www.404manual.com>

<http://www.luxmanual.com>

<http://aubethermostatmanual.com>

Golf course search by state

<http://golfingnear.com>

Email search by domain

<http://emailbydomain.com>

Auto manuals search

<http://auto.somanuals.com>

TV manuals search

<http://tv.somanuals.com>