

Nokia J (BH-806)

Issue 2.0

Introduction

About your headset

With the Nokia J headset, you can handle calls hands-free, even when you are using two mobile devices at the same time.



Note: The surface of this product does not contain nickel in the platings. The surface of this device contains stainless steel.



Warning: This product may contain small parts. Keep them out of the reach of small children.

Parts of the product are magnetic. Metallic materials may be attracted to the product. Do not place credit cards or other magnetic storage media near the product, because information stored on them may be erased.

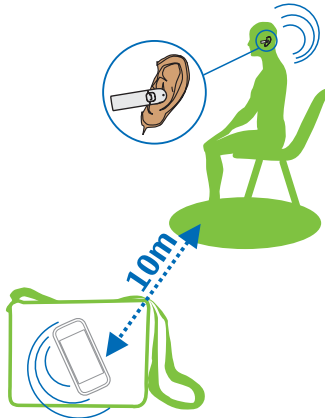
Read this user guide carefully before using the product. Also, read the user guide for the device that you connect to the product.

For more information, go to www.nokia.com/support.

About Bluetooth connectivity

You can use Bluetooth to make a wireless connection to other compatible devices, such as mobile devices.

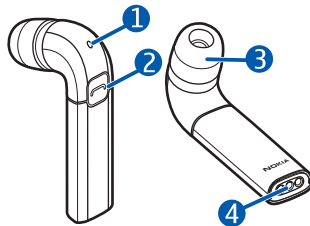
Devices do not need to be in direct line-of-sight, but they must be within 10 metres (33 feet) of each other. The connection may be affected by obstructions such as walls or other electronic devices.



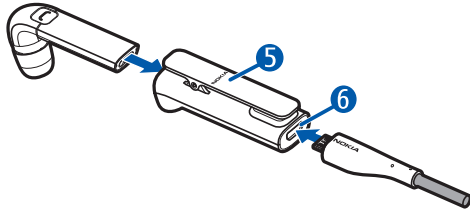
This device is compliant with Bluetooth Specification 2.1 + EDR supporting the following profiles: Headset Profile 1.1 and Hands-Free Profile 1.5. Check with the manufacturers of other devices to determine their compatibility with this device.

Get started

Keys and parts



- 1 Indicator light
- 2 Multifunction key 
- 3 Earpiece
- 4 Microphone



- 5 Carrying clip
- 6 Charger connector

Start using your headset

When you switch on your headset for the first time, voice prompts help you set up your headset.

The headset comes with different sized earpads. Select the earpad that fits the best and is the most comfortable for your ear. To change the earpad, pull the current earpad from the earpiece, and push the new earpad into place.

- 1 To switch the headset on, remove it from the carrying clip. If the headset doesn't switch on, charge the battery.
- 2 Gently push the earpiece into your ear.
- 3 To select the language, follow the voice prompts. You can select English or Chinese. Pairing mode is activated.
- 4 To pair the headset with a compatible device, follow the voice prompts.

Charge the battery



Warning:

Use only chargers approved by Nokia for use with this particular model. The use of any other types may invalidate any approval or warranty, and may be dangerous. Use of unapproved chargers may present a risk of fire, explosion, or other hazard.


- 1 Connect the charger to a wall outlet.
- 2 Place the headset in the carrying clip.
- 3 Connect the charger cable to the charger connector in the clip. The red indicator light turns green when the battery is fully charged.
- 4 Disconnect the charger from the carrying clip, then from the wall outlet.

When you unplug a charger, hold and pull the plug, not the cord.

The fully charged battery has power for up to 5 hours of talk time and up to 100 hours of standby time. If you keep the headset in the carrying clip, the standby time is up to 3 months.

When the battery charge is low, the red indicator light flashes, and you hear a voice prompt every 5 minutes. If you have deactivated voice prompts, the headset beeps every 5 minutes.

Check the battery charge

Make sure the headset is switched on, and touch and hold  for 2 seconds. A voice prompt tells you the battery charge level.

Switch the headset on or off

Switch on



Remove the headset from the carrying clip. The headset beeps, and a green indicator light flashes once.

The headset connects to the last connected device. If you have never paired the headset with a device, or you have cleared the device pairings, pairing mode is activated.

Switch off


Place the headset in the carrying clip. The headset beeps, and a red indicator light flashes once. All active calls are ended.


If not connected to a device within 30 minutes, the headset switches off.

Tip: Don't have the carrying clip with you? To switch the headset off, press and hold  for 4 seconds. To switch the headset on, press .

Pair and connect the headset to your mobile device

Before using the headset, you must pair and connect it to a compatible device.

- 1 To switch the headset off, press and hold  for 4 seconds.
- 2 Switch on the device to pair with.
- 3 If you have never paired the headset with a device, or you have cleared the device pairings, switch the headset on.

If you have previously paired your headset with another device, press and hold  for 5 seconds.

Pairing mode is activated, and a blue indicator light starts to flash quickly. Follow the voice prompts.

- 4 Within 3 minutes, activate Bluetooth on the device, and set it to search for Bluetooth devices. For details, see the user guide of the device.
- 5 Select the headset from the list of found devices.
- 6 If required, enter the passcode **0000**.

You can pair your headset with 8 compatible devices, but you can only connect it to a maximum of 2 devices at the same time.

With some mobile devices, you may need to make the connection separately after pairing.

Wear the headset

Gently push the earpiece into your ear.

When you're not using your headset, keep it in the carrying clip.

Tip: Have your headset always at hand — clip it to your pocket as you would a pen.

Make calls

Make and receive calls


To make and receive calls using your headset, you need to connect it to your mobile device.

Make a call

Make a call in the normal way.


Answer a call

Remove the headset from the carrying clip.

Tip: If the headset is not in the carrying clip, touch .

End a call

Place the headset in the carrying clip.

Tip: To end a call, you can also touch  twice.

Reject a call


Touch  twice.

Switch a call between your headset and mobile device


Touch and hold  for 2 seconds.

You can redial the last called number or use voice dialling, if your mobile device supports these features with the headset.

Redial the last called number

When no call is in progress, press .

Use voice dialling


When no call is in progress, press and hold  for 2 seconds, and follow the instructions in the user guide of your mobile device.

Change the volume

Set the desired volume level on your connected mobile device. The selected volume level is saved as the minimum volume level for the device that is currently connected to the headset. Your headset adjusts the volume automatically according to the level of background noise.

Pair and connect the headset to two devices

When you use the headset for the first time, it automatically connects to your mobile device. You can also connect your headset to another device, and manage calls from, for example, both your personal and your work mobile device at the same time.

- 1 To switch the headset off, press and hold  for 4 seconds.
- 2 Activate pairing mode, and pair the headset with the second device.
- 3 Make sure Bluetooth is activated on both devices, and switch the headset off and back on. The headset connects to both devices.


Handle calls from two devices

If your headset is connected to two mobile devices, you can handle calls from both at the same time.

End an ongoing call, and answer a call on another device

Touch .

Put an ongoing call on hold, and answer a call on another device

Touch and hold  for 2 seconds.

Switch between active and held calls

Touch and hold  for 2 seconds.

End an ongoing call, and activate a held call


Touch .

If you redial or use voice dialling, the call is made on the device you last had an active call on with the headset.


Settings

Deactivate voice prompts

Get verbal feedback and instructions, for example, when pairing your device.



Make sure the headset is switched on, and touch and hold  for 9 seconds. You hear a voice prompt, and a yellow indicator light flashes once.

Activate voice prompts

Touch and hold  for 9 seconds. You hear a voice prompt, and a green indicator light flashes once.



Clear device pairings

When you clear the device pairings, you need to select the language again.

- 1 To switch the headset off, press and hold  for 4 seconds.
- 2 Press and hold  for 9 seconds. The headset beeps twice, and the red and green indicator lights alternate.
- 3 When the headset switches on, follow the voice prompts. Pairing mode is activated.

Change the language

When you change the language, your device pairings are cleared, and you need to pair and connect your headset to your device again.

- 1 To switch the headset off, press and hold  for 4 seconds.
- 2 Press and hold  for 9 seconds. The headset beeps twice, and the red and green indicator lights alternate.
- 3 When the headset switches on, follow the voice prompts. Pairing mode is activated.

Product and safety information

Battery and charger information

This device has an internal, nonremovable, rechargeable battery. Do not attempt to remove the battery from the device as you may damage the device.

This device is intended for use when supplied with power from the following chargers: AC-10, AC-6, DC-10, DC-6, DC-11, DC-11K, DT-600, and CA-146C. The exact charger model number may vary depending on the type of plug. The plug variant is identified by one of the following: E, X, AR, U, A, C, K, or B.

The battery can be charged and discharged hundreds of times, but it will eventually wear out.

Talk and standby times are estimates only. Actual times are affected by, for example, device settings, features being used, battery condition, and temperature.

If the battery has not been used for a long time, to begin charging, you may need to connect the charger, then disconnect and reconnect it.

If the battery is completely discharged, it may take several minutes before the charging indicator is displayed.

When your charger is not in use, unplug it from the electrical plug and the device. Do not leave a fully charged battery connected to a charger, as overcharging may shorten the battery's lifetime. If left unused, a fully charged battery will lose its charge over time.

Always keep the battery between 15°C and 25°C (59°F and 77°F). Extreme temperatures reduce the capacity and lifetime of the battery. A device with a hot or cold battery may not work temporarily.

Do not dispose of batteries in a fire as they may explode. Dispose of batteries according to local regulations. Recycle when possible. Do not dispose as household waste.

Use the charger for its intended purpose only. Improper use or use of unapproved chargers may present a risk of fire, explosion, or other hazard, and may invalidate any approval or warranty. If you believe the charger is damaged, take it to a service centre for inspection before continuing to use it. Never use a damaged charger. Only use the charger indoors.

Take care of your device

Handle your device, battery, charger and accessories with care. The following suggestions help you protect your warranty coverage.

- Keep the device dry. Precipitation, humidity, and all types of liquids or moisture can contain minerals that corrode electronic circuits.
- Do not use or store the device in dusty or dirty areas. Moving parts and electronic components can be damaged.
- Do not store the device in high temperatures. High temperatures can shorten the life of the device, damage the battery, and warp or melt plastics.
- Do not store the device in cold temperatures. When the device warms to its normal temperature, moisture can form inside the device and damage electronic circuits.
- Do not attempt to open the device.
- Unauthorised modifications may damage the device and violate regulations governing radio devices.
- Do not drop, knock, or shake the device. Rough handling can break internal circuit boards and mechanics.
- Only use a soft, clean, dry cloth to clean the surface of the device.
- Do not paint the device. Paint can clog the moving parts and prevent proper operation.

Recycle

Always return your used electronic products, batteries, and packaging materials to dedicated collection points. This way you help prevent uncontrolled waste disposal and promote the recycling of materials. Check product environmental information and how to recycle your Nokia products at www.nokia.com/werecycle, or with a mobile device, nokia.mobi/werecycle.

Crossed-out wheeled-bin symbol



The crossed-out wheeled-bin symbol on your product, battery, literature, or packaging reminds you that all electrical and electronic products, batteries, and accumulators must be taken to separate collection at the end of their working life. This requirement applies in the European Union. Do not dispose of these products as unsorted municipal waste. For more information on the environmental attributes of your device, see www.nokia.com/ecodeclaration.

Copyright and other notices

DECLARATION OF CONFORMITY

Hereby, NOKIA CORPORATION declares that this BH-806 product is in compliance with the essential requirements and other relevant provisions of Directive 1999/5/EC. A copy of the Declaration of Conformity can be found at http://www.nokia.com/phones/declaration_of_conformity/.

CE 0560

© 2011 Nokia. All rights reserved.

Nokia, Nokia Connecting People, and the Nokia Original Accessories logo are trademarks or registered trademarks of Nokia Corporation. Nokia tune is a sound mark of Nokia Corporation. Other product and company names mentioned herein may be trademarks or tradenames of their respective owners.

Reproduction, transfer, distribution, or storage of part or all of the contents in this document in any form without the prior written permission of Nokia is prohibited. Nokia operates a policy of continuous development. Nokia reserves the right to make changes and improvements to any of the products described in this document without prior notice.

Bluetooth is a registered trademark of Bluetooth SIG, Inc.

The contents of this document are provided "as is". Except as required by applicable law, no warranties of any kind, either express or implied, including, but not limited to, the implied warranties of merchantability and fitness for a particular purpose, are made in relation to the accuracy, reliability or contents of this document. Nokia reserves the right to revise this document or withdraw it at any time without prior notice.

To the maximum extent permitted by applicable law, under no circumstances shall Nokia or any of its licensors be responsible for any loss of data or income or any special, incidental, consequential or indirect damages howsoever caused.

The availability of particular products may vary by region. Please check with your Nokia dealer for details. This device may contain commodities, technology or software subject to export laws and regulations from the US and other countries. Diversion contrary to law is prohibited.

/Issue 2.0 EN

Free Manuals Download Website

<http://myh66.com>

<http://usermanuals.us>

<http://www.somanuals.com>

<http://www.4manuals.cc>

<http://www.manual-lib.com>

<http://www.404manual.com>

<http://www.luxmanual.com>

<http://aubethermostatmanual.com>

Golf course search by state

<http://golfingnear.com>

Email search by domain

<http://emailbydomain.com>

Auto manuals search

<http://auto.somanuals.com>

TV manuals search

<http://tv.somanuals.com>