



**SUPPORT GUIDE FOR  
NOKIA MODEM OPTIONS AND  
DIAL-UP  
for the Nokia 6100**

**NOKIA**





# Contents

- 1. INTRODUCTION ..... 1
- 2. SYSTEM REQUIREMENTS ..... 1
- 3. USING NOKIA MODEM OPTIONS ..... 2
- 4. MAKING A DIAL-UP CONNECTION ..... 2

**Copyright © Nokia. All rights reserved.**

Reproduction, transfer, distribution or storage of part or all of the contents in this document in any form without the prior written permission of Nokia is prohibited.

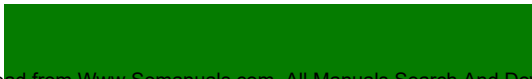
Nokia and Nokia Connecting People are registered trademarks of Nokia Corporation. Other product and company names mentioned herein may be trademarks or tradenames of their respective owners.

Nokia operates a policy of continuous development. Nokia reserves the right to make changes and improvements to any of the products described in this document without prior notice.

Under no circumstances shall Nokia be responsible for any loss of data or income or any special, incidental, consequential or indirect damages howsoever caused.

The contents of this document are provided "as is". Except as required by applicable law, no warranties of any kind, either express or implied, including, but not limited to, the implied warranties of merchantability and fitness for a particular purpose, are made in relation to the accuracy, reliability or contents of this document. Nokia reserves the right to revise this document or withdraw it at any time without prior notice

The availability of particular products may vary by region. Please check with the Nokia dealer nearest to you.





## 1. INTRODUCTION

---

First you must have the Nokia 6100 modem drivers installed on your computer and secondly if you wish to use High Speed Data or GPRS services you must have those services activated on your SIM card. Please also check from your GSM operator what speeds they support in their network and also if the High Speed Data is in use in that area whereas you are located. Then you also should ask from your ISP which connection methods they support and if they support ISDN v.110 is their modem pool capable of accepting as "low" speed, especially during login process, as your phone will give you. In GPRS you don't need to select any speed because the network gives you the best speed that it can depending on the network traffic.

When you are roaming in other GSM operator's network please verify that they have also GPRS roaming agreement

## 2. SYSTEM REQUIREMENTS

---

To install and run the Nokia Modem Options, you need:

- An Intel-compatible PC equipped with Windows 98/98SE/Me/2000/XP
- For connection between the Nokia 6100 and a PC you need a compatible infrared or USB port in your computer



**Note:** In this guide, all references to personal computers (PC) are also applicable to laptop computers.

### 3. USING NOKIA MODEM OPTIONS

---

1. Start Nokia Modem Options from *My Computer – Control Panel – Nokia Modem Options*.
2. Now you should get the Nokia Modem Options user interface on your desktop (Figure 1.).

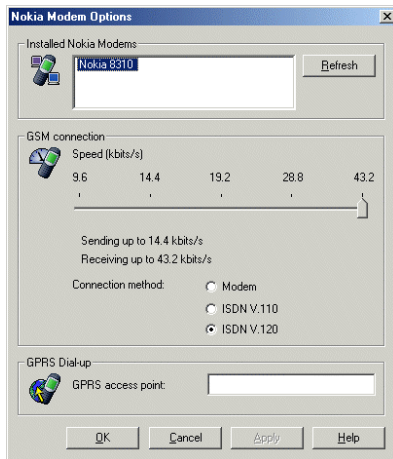


Figure 1. Nokia Modem Options

3. Select appropriate modem from the Installed Nokia modems list (shows only High Speed Data and GPRS compatible phones)
4. Select the desired Connection method and connection speed or if you wish to use GPRS then give the access point name (APN) which you can get from your GSM service provider and click *Apply*.
5. The selected speed will be used the next time you use Dial-Up networking with your phone via IrDA.

NOTE! You can reset the user interface by clicking Refresh button.

### 4. MAKING A DIAL-UP CONNECTION

---

Nokia Modem Options and Nokia 6100 in conjunction with supporting GSM network gives you possibility to make either a normal GSM data connection or a GPRS connection.

## 4.1 MAKING A NORMAL GSM DATA DIAL-UP CONNECTION

1. Go to My Computer – Dial-Up Networking - Make a new connection (in Win98). In Win Me go to My Computer – Control Panel – Dial-Up Networking – Make a New Connection. In Win 2000 Pro go to My Computer – Control Panel –Network and Dial-Up Connections – Make New Connection. This opens a window where you can choose the right modem and name the connection in Win98/Me (Picture 1.) and in Win 2000 Pro you see welcoming window (Picture 2.).

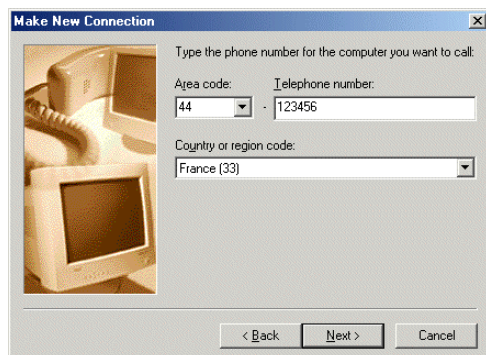


Picture 1. Naming the connection



Picture 2. Click Next>

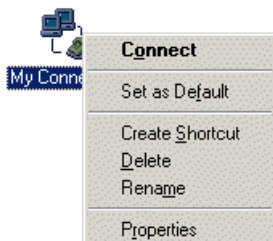
For Win 98/Me follow pictures 3-6 and for Win 2000 Pro follow pictures 7-11.



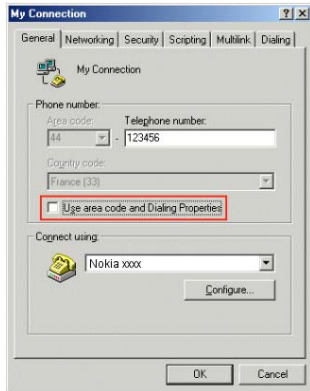
Picture 3. Enter the ISP's phone number



Picture 4. Click Next>



Picture 5. Changing connection properties (click right mouse button and choose Properties).

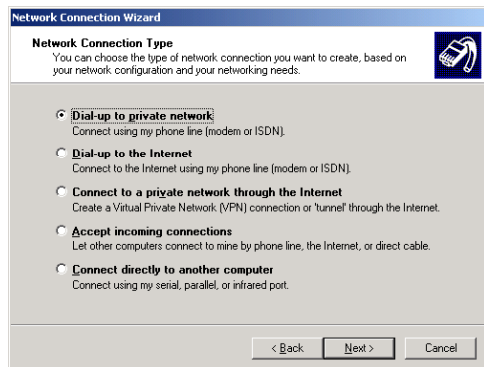


Picture 6. Please uncheck the "Use area..." if you don't need to use area or country code.

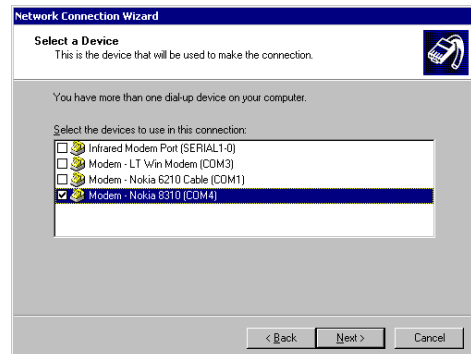
Following pictures shows steps to make a new dial-up connection in Win 2000 Pro (Pictures 7-11).



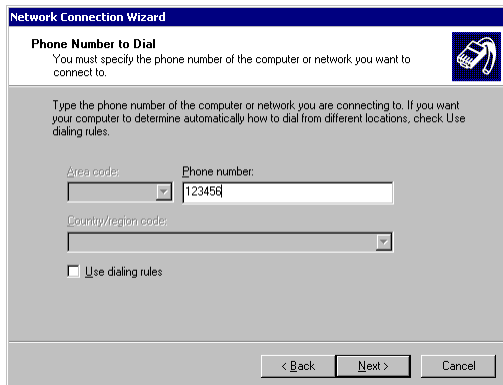
**Note:** You may get different windows and you may not need to go through as many steps as shown but just skip those steps that you don't get. Following pictures show the shortest way.



Picture 7. Choose either Dial up to private network or Dial-Up to the Internet and click Next.



Picture 8. Select "Nokia 6100" and click Next. NOTE! Modem list may look different depending on which option you chose in step 7.



Picture 9. Enter your ISP's phone number and click Next.



Picture 10. Select "For all users" or "Only for myself". NOTE! depending on which option you chose in step 7 you may need to go through more steps like setting up mail account etc.

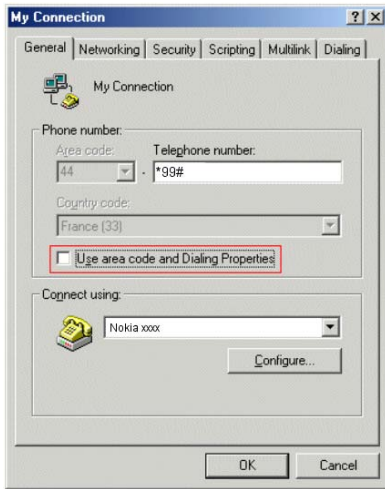


Picture 11. Name your connection and click Finish.

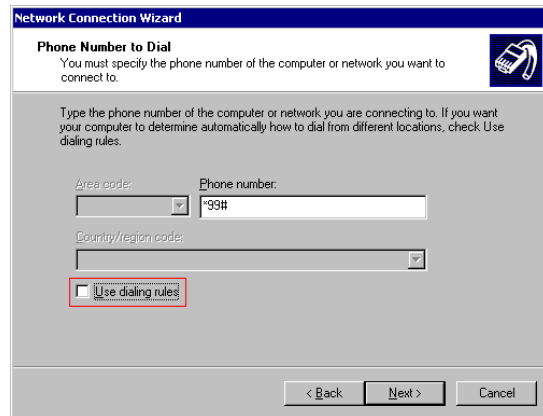
## 4.2 MAKING A GPRS DIAL-UP CONNECTION

GPRS Dial-Up connection is made the same way as normal dial-up connection except that the phone number is different. You can get the settings like APN, phone number, possible Domain Name Server address etc. from your GSM operator.

Please see pictures 12 and 13 showing typical phone number when making a GPRS connection.

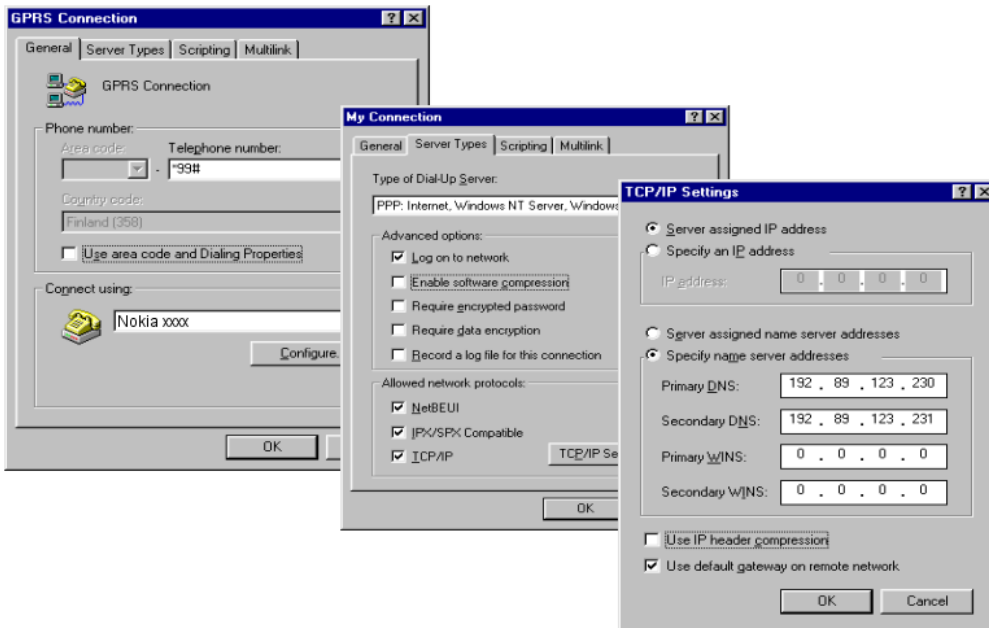


Picture 12.



Picture 13.

Please notice that some operators requires you to put also information into Networking tab, but this information you will get from your GSM operator.



Picture 14. **Disable** “Enable Software compression”, **Enable** “Specify name server addresses”, Primary DNS: xxx.xxx.xxx.xxx, Secondary DNS xxx.xxx.xxx.xxx, **Disable** “Use IP header compression”. DNS addresses you will get from your operator.



## Free Manuals Download Website

<http://myh66.com>

<http://usermanuals.us>

<http://www.somanuals.com>

<http://www.4manuals.cc>

<http://www.manual-lib.com>

<http://www.404manual.com>

<http://www.luxmanual.com>

<http://aubethermostatmanual.com>

Golf course search by state

<http://golfingnear.com>

Email search by domain

<http://emailbydomain.com>

Auto manuals search

<http://auto.somanuals.com>

TV manuals search

<http://tv.somanuals.com>