

Installation and Service Guide

Point of Use Water Coolers



CONTENTS

Water Cooler Specifications.....	2
Set-up & Preparation Instructions	3
In-shop Unit Preparation	3
Installation Instructions	3
Service Information.....	4
Lubrication	4
Periodic Maintenance	4
Hot Tank Cleaning	5
Cabinet Cleaning	6
Operating Features	6
Troubleshooting	6
Accessories.....	7
Replacement Parts Pictorial Breakdown.....	8
Replacement Parts List.....	9
Wiring Diagram.....	10
Filter/RO Warranty.....	11
Cooler Warranty.....	11



WATER COOLER SPECIFICATIONS

Cook and Cold Models PHT1AQK, PST1AQK and PHF1AQK (-D100 series)

Voltage	115VAC \pm 10%/1 PH/60 Hertz
Size	43-1/2"(109cm)H., 13-1/2"(34cm)W., 16" (41cm)D.
Shipping Weight (Approx)	60 lbs. (27kg)
Cold Water Capacity*	.5 G.P.H. (1.9 L.P.H.)
Compressor	1/20 HP
Compressor (Full Load)	1.1 Amps
Refrigerant	R 134a
Refrigerant Charge	1.875 oz. (53 grams)

Hot, Cook, and Cold Models PHT1AQHK, PST1AQHK and PHF1AQHK (-D200 series)

Voltage	115VAC \pm 10%/1 PH/60 Hertz
Size	43-1/2"(109cm)H., 13-1/2"(34cm)W., 16" (41cm)D.
Shipping Weight (Approx)	63 lbs. (29kg)
Cold Water Capacity*	.4 G.P.H. (1.5 L.P.H.)
Hot Water Capacity	45/6 oz. (45/175ml.) cups
Compressor	1/20 HP
Compressor (Full Load)	5.5 Amps
Refrigerant	R 134a
Refrigerant Charge	1.875 oz. (53 grams)

* **A.R.I. Ratings: Room Temperature 90°F(32°C); Supply Water Temperature 80°F (27°C); Drinking Water Temperature 50°F(10°C).**

Specifications subject to change without notice.

** These units have been manufactured with R134a refrigerant. Repairs to the system must be performed by a Certified Refrigeration Technician only. Always refer to the data plate located on the base of the unit for the proper refrigerant and charge.

WARNING: A pressure regulator, such as a slow flow regulator, must be installed in front of the unit's water inlet if the water pressure (including any possible pressure spikes) could exceed 100 P.S.I.G. (690 kPA). Failure to comply will void the warranty. The manufacturer accepts no liability for damage caused by excessive water pressure.

Do not use this drinking water system where the source water is microbiologically unsafe or with water of unknown quality without adequate disinfection before or after the unit.

WATER COOLER SET-UP & PREPARATION INSTRUCTION

A) Inspection

- 1) Inspect the carton and the water cooler for evidence of rough handling and concealed damage. Damage claims should be filed with the carrier.
- 2) Remove the foam packing blocks from between the reservoir and the cabinet front.

B) In-shop Preparation procedures - Filter/RO Unit Preparation

Warning - Failure to follow these procedures will affect cooler performance and void the warranty.

Install Filters/RO cartridges as follows:

- 1) Remove the access door on the front of the unit by grasping the handholds on the sides and pulling off the door. A tap with the palm of your hand about 6" (15cm) up the side of the cabinet will allow the door to pop off quite easily. Note marked area on replacement parts drawing.
- 2) Remove the manifold assembly and quad filter from the mounting brackets and set them outside the cabinet. There is no need to disconnect the tubing.
- 3) Install filters as stated in filter "Installation and Service Guide".
- 4) **Note: For RO models, do not install the membrane at this time.**
- 5) Snap the access door back in place on the front of the unit.

Note: There are snap points at the handholds and near the base.

Filter/RO Flushing Procedures:

Following this procedure will prepare your OASIS® cooler to deliver the best possible drinking water.

- 1) Filters are installed, cooler unplugged, top is off.
- 2) Flush filters and reservoir as described in filter "Installation and Service Guide".
- 3) Replace cabinet top.

C) Water Cooler Installation Instructions

Reservoir and Filter Flushing procedures previously outlined must be completed before cooler is installed.

NOTE: The following states require a licensed plumber to install cooler; AR, GA, MA, MI, OK, RI, SC, SD, TX, VT and WI.
CA, KS, MN, NM and OR allow for a state-registered installer or contractor as well.

WARNING: A pressure regulator, such as a slow flow regulator, must be installed in front of the unit's water inlet if the water pressure (including any possible pressure spikes) could exceed 100 P.S.I.G. (690kPA). Failure to comply

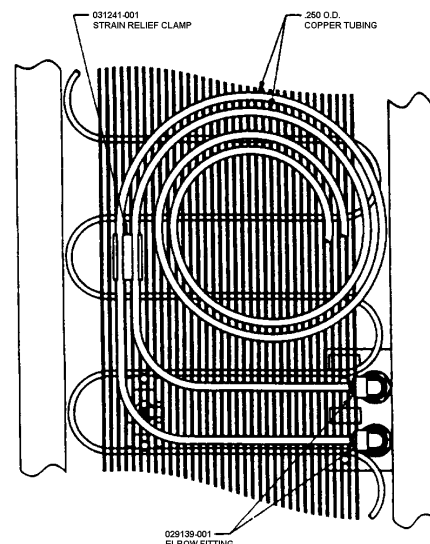
will void the warranty. The manufacturer accepts no liability for damage caused by excessive water pressure.

- 1) Determine the best installation location considering customer preference, electrical outlet, water line access, and if applicable, drain locations.
- 2) The water cooler should be located at least 2" (5cm) from the wall to assure adequate condenser air circulation.
- 3) Locate your best access to the water source. Tap into the water line with a saddle tapping valve**, a faucet fitting ball valve, a solder tee, or similar device.

NOTE: Always check the local plumbing codes before tapping into a water line. **(See the Saddle Tapping Valve Installation Instructions in this manual if applicable. Valves are available from the Service Department).

- 4) **Warning:** Use only 1/4" OD copper tubing to connect your water supply to the cooler access port. Connect your water line to the port labeled "water inlet". The inlet fittings used on the OASIS® Cooler are quick-connect fittings. Simply push the tube into the fitting until it firmly seats in the bottom of the fitting. To remove the tube, push in the collet and pull the tube from the fitting. Units are shipped with blue plugs in each fitting. Remove the plugs in the same manner described above before inserting the tube. A stop valve (not included) is recommended near the inlet connection to the cooler.
- 5) The cooler is equipped with a clamp that relieves stress on the water inlet and drain/product water fittings when the cooler is moved. The copper tubing can be coiled and secured in the clamp as shown in the diagram below. This configuration will help to reduce the leaks associated with moving a cooler with plumbing still attached as well as removing the stress from the fittings.

EXTERNAL PLUMBING INSTRUCTIONS



6) **RO Cooler only - complete instruction 6, Filter models - proceed to instruction 7.**

Connect a ¼" OD copper tube to the drain fitting located on the back of the unit. This tube should be routed to the most convenient drain location such as a sink drain. (See the Drain Clamp Assembly instructions in this manual if applicable). Drain applications routing tubing from a cooler to the ceiling and then into a drain is acceptable. Some reduction in membrane productivity may occur, however, depending on the height of the ceiling and the source water line pressure. Some local plumbing codes require an air gap to be installed between the cooler and the drain connection. Air gaps are available from the service department. Check your local plumbing codes to assure compliance.

- 7) To speed up the process of priming the unit, you may wish to pour 4 gallons (15 liters) of filtered water into the reservoir. To do so, first remove the cooler top and remove the reservoir lid (see "Reservoir Replacement Procedure" under the service information for the easiest method). Replace the lid and top after pouring the water into the reservoir.
- 8) Check the available power supply against the water cooler data plate to assure proper electrical service. The voltage specification is 115v ± 10% and voltage outside of this specification will affect cooler performance and could permanently damage the refrigeration system.
- 9) Verify that the hot tank switch is in the "off" position. Plug power supply cord into receptacle.
- 10) Turn on water supply to cooler.
- 11) Open each faucet until water flows freely.
- 12) On hot tank models, turn on the hot tank by depressing the switch toward the reset position. The switch is located inside the access door, mounted on the column support.

CAUTION: WATER FROM HOT FAUCET CAN SCALD.

DO NOT USE THE FIRST THREE RESERVOIRS OF WATER.

- 2) Periodic replacement of the filter/RO cartridges will be required. The frequency of the change will be determined by the attributes of the source water. Foul taste or odor may occur if filters are not changed at proper intervals.

Filter change procedure:

- a) Prepare a spare filter/RO vessel set in your shop. Clean and sanitize the vessels and then install the replacement cartridges per the instructions in the filter "Installation and Service Guide". Then continue with the following flushing and installation procedures.
- b) On filtration versions, run a ¼" OD tube from the blue collet port of the manifold to an off-center port on the quad lead filter vessel. Run a ¼" OD tube from the center port to the nearest drain location. Plug the other off-center port. Connect a ¼" OD tube from the water supply to the white collet on the manifold. Turn on water and flush filters for 10 minutes. Disconnect tubing and plug the ports. Take this vessel set to the installation and install it in place of the existing vessel set. Take the old vessel set back to the shop for refurbishment.
- c) On reverse osmosis versions, run a ¼" OD tube from the blue collet port of the manifold to an off-center port on the quad carbon filter vessel. Run a ¼" OD tube from the center port to the nearest drain location. Plug the other off-center port. Connect a ¼" OD tube from the gray collet elbow to the yellow collet elbow. Connect a ¼" OD tube from the water supply to the right hand white collet port on pre-filter side. Plug the red collet port and the smartap port located behind pre-filter inlet and outlet ports. Turn on water and flush pre-filter and carbons for 10 minutes. Turn off water. Remove membrane vessel and discard water. Insert membrane per "filter installation" on page 2 of the filter "Installation and Service Guide". Connect ¼" OD tube from red collet port to drain. Turn on water and flush 3-4 minutes. Disconnect tubing used for flushing and plug all ports.

- 3) Reservoir cleaning and sanitizing should be done each time the filters are changed. Prepare a spare reservoir assembly following the "Reservoir Flushing" procedures outlined in the filter "Installation and Service Guide". On hot models, inspect the o-rings in the hot tank fitting and the reservoir which seal the hot tank opening. These should be replaced if they show signs of a flattened diameter.

Reservoir Replacement Procedure:

- a) Remove the top by lifting it up and pressing in on the cabinet back about 4" (100mm) in from the side and 2" (5mm) down from the top.

SERVICE INFORMATION & GUIDELINES

A) Lubrication

This unit is equipped with a hermetically sealed compressor and no periodic lubrication is necessary. Replacement filter/RO cartridge o-rings should be lubricated with Dow Corning® Compound 111 or equivalent, when they are installed.

B) Periodic Maintenance

- 1) The black static condenser on the rear of the unit must be kept clean of dirt and lint. Visually inspect every 3 months.

Cleaning Procedure:

- a) Unplug the cooler.
- b) Clean condenser with a small stiff non-wire brush.

- b) To Remove the Reservoir Lid: it is easiest to push down slightly near the lid center and lift on each tab at the front of the lid individually. Once those have loosened, lift up on each of the other two corners so the lid lifts as straight up as possible. This will help avoid the sealing edge from catching as the lid is removed.
 - c) Drain the water from the reservoir by opening the cook and/or cold faucet.
 - d) Grasp the reservoir using the handholds on top and pull upward. Some resistance is normal because of the tight fit required at the sleeve-on-probe.
 - e) Slide the newly sanitized reservoir into place taking care not to touch the inside of the reservoir with bare hands.
 - f) Replace the reservoir lid and the cooler top.
- 4) Periodic replacement of the air filter assembly is required to prevent airborne contaminants from entering the reservoir. When the water filters are changed and reservoir is sanitized, it is recommended that the air filter also be replaced.
 - 5) Periodic cleaning of the strainer inside the tube at the elbow on the mechanical float is required to maintain water flow. It can be removed from the tube for cleaning or flush water in reverse flow through the strainer. It is recommended that this be done at least as often as the filters are changed.

C) Hot Tank Cleaning Instructions

Water coolers need to be cleaned periodically to prevent mineral buildup inside the heating tank. The frequency of cleaning is determined by the quantity of minerals in the water and the amount of water used.

Hot tanks may require cleaning when:

- 1) Normal hot water flow appears restricted.
- 2) Noisy heating cycles are heard.
- 3) Water in the cooling tank is very warm.
- 4) Mineral build-up has imparted a taste to the water.

PLEASE READ AND FOLLOW ALL DIRECTIONS TO PREVENT DAMAGE TO THE UNIT AND TO THE USER.

CAUTION: Because this cleaning process involves very hot water that may scald, the use of rubber gloves is recommended. **KEEP CHILDREN AWAY.**

MATERIALS YOU WILL NEED:

- 1) Four (4) ounces (113grams) of citric acid crystals. Citric acid crystals are available in four-ounce and fifty-pound quantities from the address at the end of this manual.
- 2) A pair of rubber gloves.
- 3) A bucket or pan with a two (2) gallon (7.5 liters) capacity.
- 4) A funnel with a 3/8" (10mm) max diameter at the end.

- 5) A quart (1 liter) measuring container for hot liquids.

HOT TANK CLEANING PROCEDURE

- 1) Unplug the service cord and turn off water supply.
- 2) Draw water from the hot faucet until the water is cool.
- 3) Remove the top and set aside the reservoir lid.
- 4) Place a container under the hot tank drain valve. For convenience, insert a 3/8" (10mm) OD plastic tube into the opening at the end of the black valve and turn the petcock counterclockwise or simply turn the valve's petcock counterclockwise without the tube into the drain. Drain tank.
- 5) Drain an additional amount of water from the reservoir through the faucet to further expose the hot tank inlet tube opening.
- 6) Close hot tank drain valve.
- 7) Mix four (4) ounces (113 grams) of citric acid crystals with one (1) quart (1 liter) of very hot water. (Wearing rubber gloves is recommended).
- 8) Place a funnel inside the reservoir in the left-hand tube (in line with the hot faucet). Carefully pour the hot solution into the funnel. **BE CAREFUL NOT TO SCALD YOUR HANDS.**
- 9) Remove the funnel and fill the reservoir with two (2) gallons (7.5 liters) of water. Open the hot faucet to allow the hot tank to fill.
- 10) Place the reservoir lid on top of the reservoir.
- 11) Plug the service cord into the grounded fused outlet.
- 12) Let the unit stand for at least twenty (20) minutes.
- 13) Unplug the service cord.
- 14) **TURN OFF THE HOT TANK SWITCH FOUND ON THE COLUMN SUPPORT BEHIND THE ACCESS DOOR.**
- 15) Remove reservoir lid as before.
- 16) Draw water from the hot faucet until the water is no longer warm.
- 17) Open the hot tank drain valve and catch the water in a pan or bucket. The water will be discolored. **NOTE: THIS DRAIN WATER SHOULD BE IMMEDIATELY Poured DOWN A DRAIN TO PREVENT ACCIDENTAL SPILLING. THIS WATER WILL STAIN.**
- 18) If sanitizing is required, see the WATER COOLER SET-UP AND PREPARATION INSTRUCTIONS in this manual. This is also a good time to sanitize the reservoir as outlined in the reservoir flushing procedure located in the filter "Installation & Service Guide".
- 19) Pour at least two (2) gallons (7.5 liters) of water into the reservoir and allow this water to drain out the hot tank drain.
- 20) Close drain valve and replace lid making sure it snaps completely into place. **CAUTION: FAILURE TO TURN OFF HOT TANK COULD CAUSE PHYSICAL DAMAGE TO THIS UNIT.**

- 21) Plug the service cord back into the grounded fused outlet and turn on the water supply.
- 22) Allow the unit to fill the reservoir half full.
- 23) Open the hot faucet and draw water from the faucet until it flows freely.
- 24) Draw at least one (1) quart (1 liter) of water from each faucet.
- 25) Turn the hot tank switch on (toward the "RESET" position).
- 26) Replace the top of the cabinetry.

Your hot tank should now be clean. If the flow of water or the noisy cycles have not been improved, you should have the unit repaired at an authorized service center. Cleaning the unit in this manner will not only make the unit run more efficiently, but will make the water taste better.

D) CABINET CLEANING SUGGESTIONS

There is no maintenance required on the polycarbonate plastic cabinetry. Only regular cleaning with some common household cleaners is all that is necessary to remove dirt and grime from the polycarbonate cabinet.

Cleaners such as mild soap, Fantastic®, Windex®, Joy®, and Top Job® can be used.

The drip tray is dishwasher safe.

Abrasive cleaners are not recommended because of the potential for scratching.

Flammable cleaners should not be used because of health and safety reasons.

E) OPERATING FEATURES

- 1) *Overload Protection*
The compressor motor is equipped with an automatic reset protector which will disconnect the motor from the line in case of an overload.
- 2) *Safety Float*
The cooler is designed with a safety mechanism to prevent overfilling. In case the primary fill float fails, a second float is activated as the water level rises. This float shuts off the water to the reservoir (**NOTE: A hard impact or jarring of the unit while it is filling may trip the safety float**). To restart water flow, press the blue reset button about half way down on the reservoir lid until the pressure on the safety float is released.
- 3) *Water Quality Monitor - Smartap® Versions*
The water cooler may be equipped with a Smartap® water quality monitor. This is a dual probe monitor that compares the feed water to the product water as a percentage. The circuit is preset at the factory to indicate membrane performance when the test button is pushed. Either the green "good" light will illuminate indicating above 70% TDS reduction or the

yellow "service" light will illuminate indicating below 70% TDS reduction. This patented, solid state electronic circuit does not require service.

- 4) *Safer Faucets*
This water cooler incorporates the "safer faucet" for hot water dispensing. This deters accidental dispensing of hot water.
- 5) *Temperature Control*
Both the hot tank and the cold reservoir have temperature controls which can be adjusted with a small bladed screwdriver. The cold control can be turned clockwise for cooler water and counterclockwise for warmer water in quarter turn adjustments.

F) TROUBLE-SHOOTING

- 1) *NO WATER IS FLOWING:*
Make sure all stop valves to unit are open and water is flowing freely. Water flow rate through filter system is approximately 0.4 GPM (1.5LPM)*. RO flow rate will be based on the membrane capacity. Standard flow is 15 GPD (56.5 LPD)** at optimum conditions. Remove cooler top and make sure safety float hasn't tripped by resetting it. To reset safety float, press the blue reset button about half way down on the reservoir lid. Check the in-line strainer at the mechanical float inlet elbow to make sure it is not clogged. Check the outlets of the filter manifold and quad filter head to see where the flow stops. Remember, water flow from RO units will be minimal.
- 2) *SMARTAP® INDICATES "SERVICE":*
Test the quality of water only while the unit is producing water. Draw 1 quart of water from the cook faucet wait 5 minutes and retest the water. If it still indicates "Service", check the TDS of the source water to the TDS of the product water. The membrane may need to be changed if the rejection of TDS is less than 70%.
- 3) *NO HOT WATER:*
Check to see if the switch for the hot tank has been turned on. The switch is located on the column support behind the access door. The rocker switch should be depressed toward the "RESET" position. If the switch is in the "ON" position and there is no hot water, it is possible the circuit needs to be reset. Press the rocker switch to the "OFF" position, then back to the "RESET" position.

*With sufficient line pressure.

**Varies with feed water pressure, temperature and TDS. FANTASTIK® is a registered trademark of Texize Chemical Co. WINDEX® is a registered trademark of DRACKETT Co. JOY® and TOP JOB® are registered trademarks of Proctor & Gamble Co.

ACCESSORIES

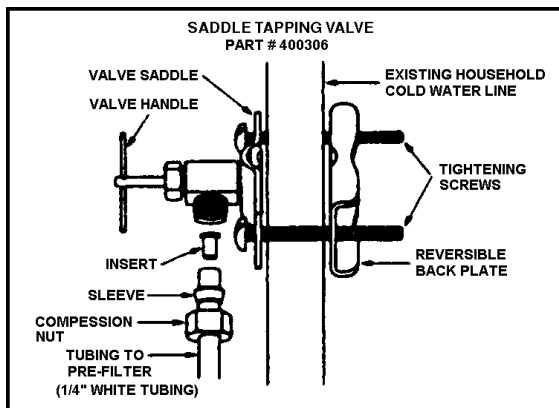
SADDLE TAPPING VALVE

Part Number 400306

NOTE: State and local plumbing codes may prohibit the use of saddle tapping valves**. All connections must conform to applicable plumbing codes.

**All states prohibit the use of saddle tapping valves in commercial applications.

Do not install feed water assembly on the hot water line. Before installation, read the instructions on the outside of the packaging.

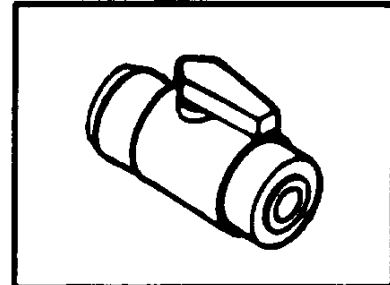


SHUT-OFF "BALL" VALVE ASSEMBLY

Part Number 031177-001 (3/8" tubing)

031177-002 (1/4" tubing)

It is recommended that all units have a shut-off valve installed directly behind the unit. This is a safety precaution in case the unit needs to be shut off for any reason. It will also help in the filter replacement and sanitation process.



IN-LINE AIR GAP ASSEMBLY

(for RO units)

Part Number 030917-002

NOTE: All connections must conform to applicable plumbing codes.

The Air Gap assembly may be installed anywhere between the unit and the drain. It must be installed in a vertical position. The inlet quick connect fitting is for 1/4" OD tubing and the outlet fitting connects to 3/8" OD tubing.

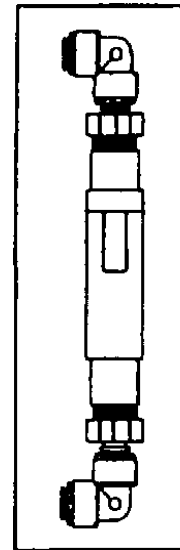
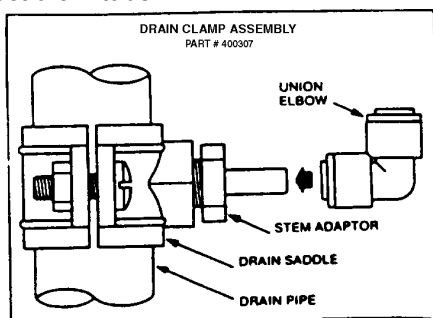
DRAIN CLAMP ASSEMBLY

(for RO units)

Part Number 400307

The drain clamp assembly should be installed on a straight length of drainpipe between the "P" or "S" trap and the sink. If possible, orient the hole to be drilled toward the desired location of the drinking water faucet. Installation should be as far away as practical from the garbage disposal. If you have a double sink, install drain outlet on the sink drain opposite disposal.

- 1) Position drain outlet saddle on drainpipe. Allow adequate space for drilling operation.
- 2) Tighten saddle bolts evenly on both sides. Avoid over tightening.
- 3) Using the opening in the drain outlet saddle as a guide, drill 1/4" hole in drain pipe.
- 4) Install stem adaptor fitting. Do not over tighten.
- 5) Push union elbow fitting onto stem adaptor fitting and connect drain tube.

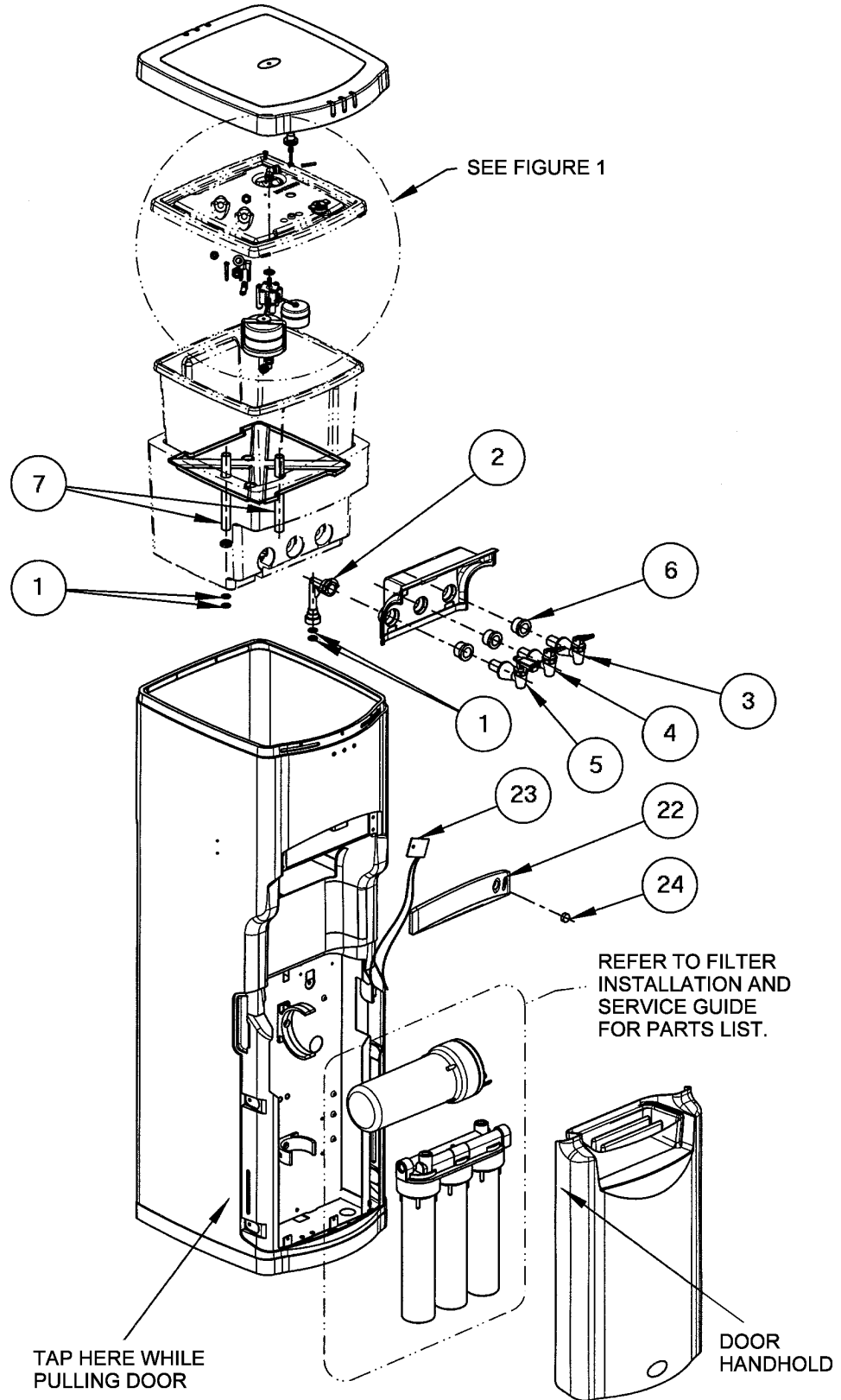


DOW CORNING® COMPOUND 111

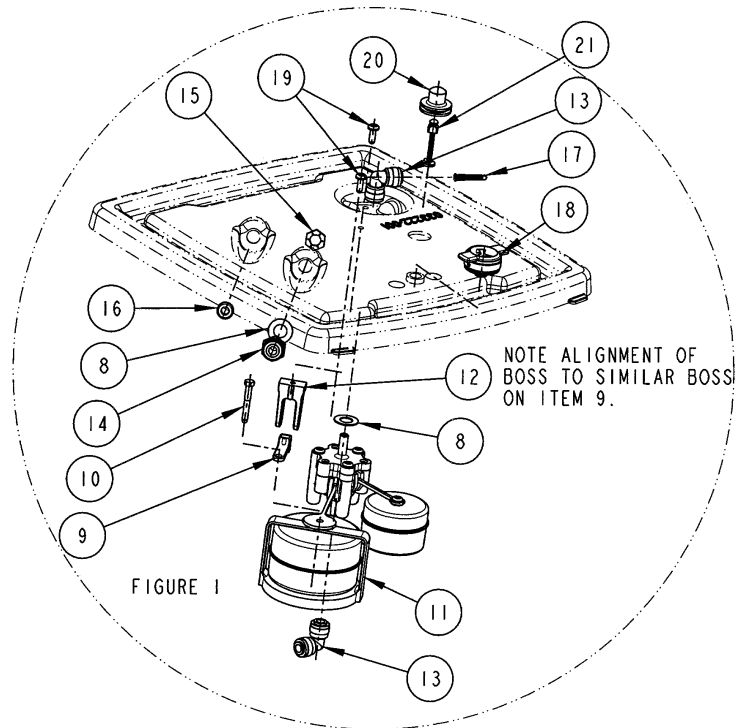
Part Number 030429-001

We recommend the use of DOW 111 exclusively to lubricate o-rings on all OASIS® components and systems. This silicone based FDA approved lubricant has high viscosity, does not readily evaporate at room temperature, and smoothly adheres to the o-ring. These qualities make DOW 111 an easy to use long lasting lubricant.

REPLACEMENT PARTS BREAKDOWN

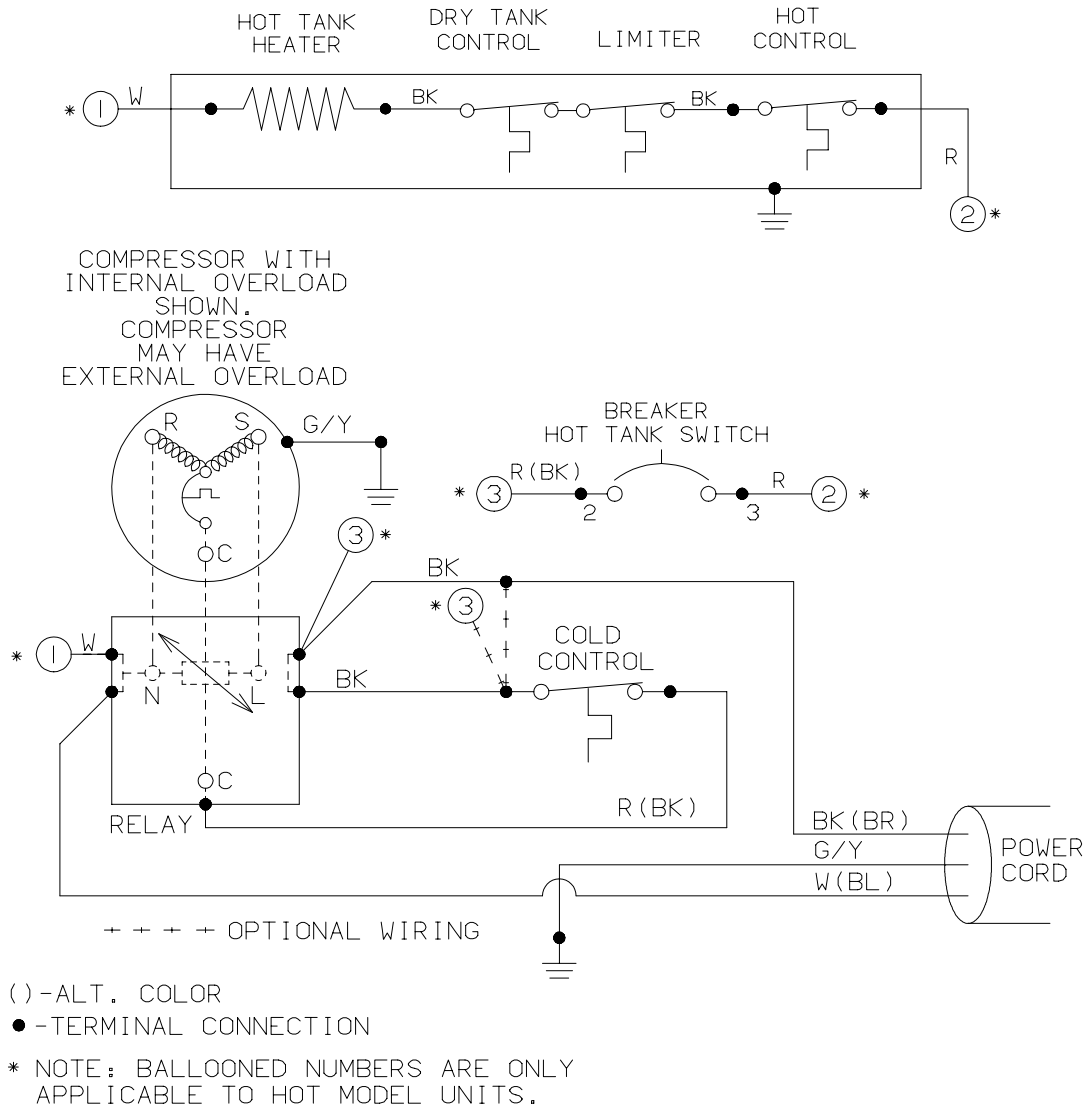


REPLACEMENT PARTS BREAKDOWN



ITEM NO.	CABINET ASSY MODEL:	PHF1AQK (Y)		PHF1AQHK (Y)		PHT1AQK (Y)		PHT1AQHK (Y)		PST1AQK (Y)		PST1AQHK (Y)	
		QTY	PART NO.	QTY	PART NO.	QTY	PART NO.	QTY	PART NO.	QTY	PART NO.	QTY	PART NO.
1	O-RING, 0.4241D X 0.103			4	030858-212			4	030858-212			4	030858-212
2	ELBOW ASSY, HOT FAUCET			1	033395-001			1	033395-001			1	033395-001
3	FAUCET ASSY, COLD	1	032052-002	1	032052-002	1	032052-002	1	032052-002	1	032052-002	1	032052-002
4	FAUCET ASSY, COOK	1	032052-001	1	032052-001	1	032052-001	1	032052-001	1	032052-001	1	032052-001
5	FAUCET ASSY, HOT			1	032052-003			1	032052-003			1	032052-003
6	GASKET, FAUCET	2	031429-001	3	031429-001	2	031429-001	3	031429-001	2	031429-001	3	031429-001
7	TUBE, SUPPLY	1	033397-001	2	033397-001	1	033397-001	2	033397-001	1	033397-001	2	033397-001
8	GASKET	1	028706-005	1	028706-005	2	028706-005	2	028706-005	2	028706-005	2	028706-005
9	ARM ASSY, RO					1	033476-001	1	033476-001	1	033476-001	1	033476-001
10	SCREW, SHOULDER RO					1	033475-001	1	033475-001	1	033475-001	1	033475-001
11	WEIGHT, RO					1	033474-001	1	033474-001	1	033474-001	1	033474-001
12	HANGER ASSY, RO					1	033472-001	1	033472-001	1	033472-001	1	033472-001
13	FITTING, EL-0.25	1	028481-001	1	028481-001	2	028481-001	2	028481-001	2	028481-001	2	028481-001
14	FITTING, STR-0.25					1	028483-001	1	028483-001	1	028483-001	1	028483-001
15	LOCKNUT					1	030056-001	1	030056-001	1	030056-001	1	030056-001
16	GROMMET, RO					1	019078-009	1	019078-009	1	019078-009	1	019078-009
17	STRAINER, IN-LINE	1	033264-002	1	033264-002	1	033264-002	1	033264-002	1	033264-002	1	033264-002
18	FILTER ASSY, AIR	1	031823-002	1	031823-002	1	031823-002	1	031823-002	1	031823-002	1	031823-002
19	SCREW, PAN HD-TYPE A 8-16X0.50	3	026630-036	3	026630-036	4	026630-036	4	026630-036	4	026630-036	4	026630-036
20	BUTTON, FLOAT RESET	1	033286-001	1	033286-001	1	033286-001	1	033286-001	1	033286-001	1	033286-001
21	ARM, RESET	1	033285-001	1	033285-001	1	033285-001	1	033285-001	1	033285-001	1	033285-001
22	COVER, WATER QUAL MONITOR									1	033224-001	1	033224-001
23	BOARD ASSY, WTR QUAL MON									1	030718-007	1	030718-007
24	PUSHBUTTON, QUAL MONITOR									1	030417-001	1	030417-001

ELECTRICAL DIAGRAM



OASIS® Water Cooler Limited Warranty

FIRST YEAR:

The Manufacturer promises the original purchaser (user) to repair or, at the Manufacturer's option, to replace any part of this water cooler which proves to be inoperative due to a defect in material or workmanship under normal use, for a period of one year from the date of original installation or for a period of eighteen (18) months after date of shipment from the factory, whichever occurs first. During the one year warranty, the Manufacturer will, through its approved service center or factory repair department, provide labor and parts necessary to correct such inoperative condition at no charge, if the water cooler has been installed and operated in accordance with the written instructions furnished with the water cooler.

If it becomes necessary to ship the inoperative water cooler to the approved service center or factory repair department, the Manufacturer will pay the transportation charges both ways via common carrier. Local delivery charges are not covered.

The cost of labor required to disconnect and reconnect plumbing and electrical connections will be the responsibility of the user (owner).

SECOND THROUGH FIFTH YEAR:

The Manufacturer promises within the second through fifth year to repair, or at its option, to replace any part of the sealed refrigeration system (compressor, condenser, evaporator, and interconnecting refrigerant lines) which prove to be inoperative due to a defect in material or workmanship. The Manufacturer will provide through its approved service center or the factory repair department, the labor at no charge, to install such parts of the sealed refrigeration system.

If it becomes necessary to ship the inoperative water cooler to the approved service center or factory repair department, the Manufacturer will pay the transportation charge both ways via common carrier. Local delivery charges are not covered.

The cost of labor, to diagnose a sealed refrigeration system failure, the cost of labor required to disconnect and reconnect plumbing and electrical connections or the labor to remove the refrigeration system from the water cooler, will be the responsibility of the user (owner).

In addition to the sealed refrigeration or cold water system coverage, if any of the following parts become inoperative due to a defect in material or workmanship, the Manufacturer promises to replace the part at no charge providing the part is removed and returned, properly tagged, to the nearest approved service center or the factory.

These parts are: hot tank, hot tank thermostat, heat limiter, cold thermostat, compressor starting relay and overload, and mechanical float assembly.

The labor to change the parts in the above paragraph will be the responsibility of the user (owner).

GENERAL PROVISIONS AND EXCLUSIONS:

This warranty applies only within the Continental Limits of the United States of America and Canada.

This warranty does not apply and no agreement, either expressed or implied, shall be applicable if the affixed serial number is removed, defaced or obliterated.

This warranty does not apply if service of the sealed refrigeration system or cold water system or parts furnished as original equipment by the Manufacturer are not obtained from an approved service center or the factory.

This warranty does not apply to any water components that become inoperative due to liming conditions.

This warranty does not apply to any water cooler or components that become inoperable because of a failure to satisfy standards or regulations adopted by any government or agency thereof subsequent to the date of shipment from the factory.

This warranty does not cover performance, failure or damages of any part resulting from external causes such as alterations, abuse, misuse, misapplication, corrosion or acts of God.

WARNING

The warranty and the Underwriters' Laboratory listing for this machine are automatically voided if this machine is altered, modified, or combined with any other machine or device. Alteration or modification of this machine may cause serious flooding and/or hazardous electrical shock or fire.

Except as set forth herein, the Manufacturer makes no other warranty, guarantee or agreement expressed, implied or statutory, including any implied warranty of merchantability or fitness for a particular purpose.

The foregoing is in lieu of all other agreements expressed, implied or statutory and all other obligations or liabilities of the Manufacturer. The Manufacturer does not assume or authorize any person to assume any obligations of liability in connection with this product. In no event will the Manufacturer be liable for special or consequential damages or for any delay in the performance of this agreement due to causes beyond their control.



OASIS CORPORATION

265 N. Hamilton Road

P. O. Box 3150 • Columbus, OH 43213-0150

1-800-64-OASIS (1-800-646-2747)

www.OasisWaterCoolers.com

FILTER AND RO MEMBRANE LIMITED WARRANTY FILTER CARTRIDGE WARRANTY

Subject to the conditions and limitations described below, OASIS® warrants the filter cartridges to be free from defects in material and workmanship under normal use within the operating specifications listed in the filter "Installation and Service Guide".

RO MEMBRANE WARRANTY

Membranes carry a twelve (12) month prorated warranty as follows: Credit 1/12th of the replacement cost for each unused month the system is installed and maintained to factory instructions and the unit is operated within the specifications listed in the filter "Installation and Service Guide".

Filters/Membranes under warranty will be repaired or replaced and returned upon inspection of OASIS®.

CONDITIONS OF FILTER WARRANTY

The above warranty will not apply to the filters or RO membranes that are damaged because of neglect, misuse, alteration, accident, misapplication, physical damage, fouling and/or scaling of membranes by minerals, bacterial attack, sediment, or damage caused by fire, act of God, freezing, or hot water. If the filters/membrane are altered by anyone other than OASIS®, the warranty is void. OASIS® assumes no warranty liability in connection with the Reverse Osmosis or Filtration system other than specified herein. OASIS® will not be liable for any consequential damages of any kind or nature due to use of OASIS® products.

SMARTAP® is a registered trademark of Hydrotechnology, Inc.

WINDEX® is a registered trademark of DRACKETT Co.

OASIS® is a registered trademark of OASIS Corporation

©Copyright 2000 OASIS Corporation

FANTASTIK® is a registered trademark of Texize Chemical Co.

JOY® and TOP JOB® are registered trademarks of Proctor & Gamble Co

"Three Palms Design" is a registered trademark of OASIS Corporation

Free Manuals Download Website

<http://myh66.com>

<http://usermanuals.us>

<http://www.somanuals.com>

<http://www.4manuals.cc>

<http://www.manual-lib.com>

<http://www.404manual.com>

<http://www.luxmanual.com>

<http://aubethermostatmanual.com>

Golf course search by state

<http://golfingnear.com>

Email search by domain

<http://emailbydomain.com>

Auto manuals search

<http://auto.somanuals.com>

TV manuals search

<http://tv.somanuals.com>