

OKI C9800 MFP

Why Buy OKI C9800MFP

Software

OKI Printing Solutions provides several exciting print utility programs with the C9800 MFP. The software is easy-to-use and will help the customer create impressive colour print output and manage print functions remotely.

Support

Instant desktop support is available to all OKI Printing Solutions users. Clicking on a tab in the print driver takes the user directly to a dedicated web support portal for their printer. The 'Ask OKI' site provides tips and suggestions on how to accomplish all the tasks on their printer, from creating banners to double-sided brochures.

Reliability

With a duty cycle of 150,000 prints a month, OKI Printing Solutions' advanced digital LED technology, single pass process and flat paper path ensure that the C9800 MFP is both robust and reliable.



OKI C9800 MFP

Configurations

The C9800 Colour and Mono Multifunction Product



Colour Touch Screen



OKI C9800 MFP

Features & Advantages

Multifunctionality

The C9800 MFP provides four-in-one functionality; it can print, copy, scan and network fax. A single Multifunction Product (MFP) saves space and is less expensive to purchase than separate stand-alone units. A single multifunction product is also cheaper to run, with only one set of consumables and one service contract. The C9800 MFP is easier to use too, with only one set of controls to master. Why buy four when one is better?

2 in 1: Colour at the speed of mono without compromise

Affordable, fast, high quality colour and mono print from a single compact Multifunction Product. Why would anyone consider separate mono and colour devices when they can have the one C9800 MFP that caters for all mono needs, saving both cost and space?

Class-leading speed

Combining OKI Printing Solutions' advanced single-pass LED technology with a flat paper path; the C9800 MFP is one of the fastest in its class. It delivers high-speed mono and colour output at an amazing 40ppm mono / 36ppm colour. With a C9800 MFP there is no frustrating wait for colour print. It is delivered almost as quickly as mono print.

Fast first page

The C9800 MFP delivers the first colour page in just 10.5 seconds and the first mono page in just 9 seconds. When many print jobs are only one or two pages long, the speed of the first page is critical to performance. There is no delay with OKI Printing Solutions.

Integrated copying and scanning

Sophisticated software that is provided with the C9800 MFP integrates scanning, printing, copying and network faxing functions so that they operate seamlessly. Copying is for example as fast as printing and all functionality is accessed through the large touch-screen copier style control panel.

Duplex scanning

The C9800 MFP automatic document feeder boasts duplex scanning with both sides of a document scanned in a single pass. A unique feature at this price point, duplex scanning means that documents are scanned at double speed with first set copies output more quickly than they would be with a conventional scanner.

Scan once, print many

The C9800 MFP holds scanned pages in memory. This means that multiple copy sets are delivered ready-sorted in page order and without the need to feed originals again. Scan once, print many saves original wear and tear and speeds up the copy process.

Colour Touch Screen operation

All the C9800 MFP's functions are accessed through the large, easy-to-use Touch Screen panel. With its colour graphics display and simple navigation, copy settings are easy to set and when scanning to fax or email, the touch-screen displays a full keyboard for easy addressing.



OKI C9800 MFP

Scan to Email

With the C9800 MFP, documents can be scanned directly to email. Easy-to-use; simply press the "Scan to Email" button, select an email address or enter an email address using the keyboard in the touch-screen operation panel. The C9800 MFP does the rest, scanning the document at a high 600 x 600 dpi resolution and routing it over the network to the recipient.

A major benefit of Scan to Email over conventional fax is that documents can be sent in full colour and high definition. And because the feature uses Internet lines, the transmission cost is reduced.

Scan to Fax*

Documents can be scanned to fax in exactly the same way they are scanned to email. This feature is important as many organisations rely on fax as part of their business process.

*Scan to Fax is available via additional server based software. Recommended fax gateway servers are ZetaFax.

Scan to FTP

In addition to scanning to email and fax, scanned documents can be routed in full colour and high definition to FTP servers (host PCs) anywhere in the world. Scanned documents can be sent in a number of formats including PDF. With Scan to FTP, hard copy documents can be shared quickly with anyone, anywhere.

Scan to Mailbox

Mailboxes are easily set up on the C9800 MFP's hard disk. The Scan to Mailbox feature enables users to scan documents straight to the hard disk for storage and sharing. General documents – expense sheets for example – can be retrieved and printed as required. Mailboxes can be password coded to protect confidential information.

LDAP support

LDAP (Lightweight Directory Access Protocol) is an Internet protocol that email programs use to look up contact information from a server. The C9800 MFP has full LDAP support with the MFP able to update its email address list automatically from the customer's central email server. Rather than entering individual email addresses for scanned documents, the user can scroll ready populated email addresses, speeding up the process.

PCL and PostScript

With its EFI Fiery™ controller, the C9800 MFP has PCL5c, PCL XL (colour) and genuine Adobe® PostScript 3 drivers for handling graphics files such as PDF and Mac documents. Processing is performed in the printer, freeing PC resource for other tasks.

EFI Fiery™ controller

Fiery™ is the brand of choice in many professional print environments. The C9800 MFP boasts an embedded Fiery™ controller. Fiery System 5.5e architecture provides the type of functionality normally only available in high-end external RIP servers including speed, quality and performance.

OKI C9800 MFP

PDF Direct Print

PDF documents can be printed on the C9800 MFP without opening application software for fast accurate print rendition.

Fiery utilities

With the EFI Fiery™ controller and bundled Fiery utilities, users are able to manage print queues, preview jobs before print and hold jobs to reprint as demand requires. Jobs templates can be saved in the controller and populated with variable data for faster print output – particularly useful with complex PowerPoint backgrounds.

Command Workstation™

Fiery Command Workstation™ enables all printers and MFPs with a Fiery controller to be managed on one screen. Different jobs can be routed to the most appropriate device - one perhaps with on-line finishing.

ICC profiles

The Fiery™ driver allows the use of ICC profiles for accurate colour printing. CMYK and RGB elements can be treated independently ensuring professional colour rendition – essential for externally focused print.

Packed with memory

With a 1GB of RAM (random access memory), the C9800 MFP has enough memory to cope with the largest file sizes. There is no need to add memory to the C9800 MFP and no risk of large files failing to print.

Fine print resolution

The C9800 MFP delivers 1200 x 1200 dpi resolution; an impressive 1,440,000 dots per square inch for ultra fine resolution and fantastic print and copy quality.

ProQ4800 Multilevel technology

Using OKI Printing Solutions' unique ProQ4800 Multilevel technology – intelligent digital image processing technology – the C9800 MFP produces subtler tones and smoother gradations of colour for impressive print quality results.

Hi-Speed USB2

Hi-Speed USB 2.0 is the latest USB standard for easy plug-and-play connection. With Hi-Speed USB, the C9800 MFP can be connected to any modern PC or Mac and used without complicated set up at fast connection speeds.

Network ready

The C9800 MFP is network ready. 10/100TX connectivity means it can be connected directly to an Ethernet network without need for additional network cards.

OS system compatible

Compatible with all major Operating Systems, the C9800 MFP can be used in a Windows™ environment, with Apple Mac™ and Citrix Metaframe. Versatile enough for any print environment.

Auto Colour Balance

To ensure consistent imaging the Auto Colour Balance feature checks and adjusts colour balance at start up and after every 400 copies and prints. The feature is set not to interrupt long run jobs and will delay until a job is complete ensuring maximum productivity. With Auto Colour Balance, consistent results enable users to present a consistently professional image.

OKI C9800 MFP

A3 capability

With A3 capability and A3+ for full bleed print, the C9800 MFP can be used to scan, copy, print and network fax from A6 size through to A3+. The larger formats make it possible to create A4 folded brochures, magazines and newsletters. It is speedy too - A3 printing and copying at 21ppm mono / 19ppm colour for fast, high quality A3 size output.

Heavyweight media

The flat paper path enables printing and copying onto heavyweight media. Papers and card of up to 268gsm can be fed from the Multipurpose Tray making the C9800 MFP ideal for in-house production of business cards, covers and even point-of-sale material like banners.

Active feed

Standard paper supply is from 1 x 530 sheet internal trays and a 230-sheet Multi purpose tray. All trays including the Multi purpose tray have active feed and can be loaded with special media like letterheads and card. The ability to hold different media on-line increases the versatility of the C9800 MFP and with a max total paper capacity of 2,350 sheets there are fewer stoppages for paper replenishment. Each internal paper tray can handle paper weights up 216gsm and the multipurpose tray up to 268gsm.

"No compromise" duplex

The C9800 MFP has an integral high-speed duplex for automatically printing on both sides of paper. The duplex enables easy in-house production of professional looking reports, newsletters and brochures. It can also save money by cutting paper consumption.

Auto Media Detect

Auto Media Detect combined with the straight paper path allows users to use a wide range of paper types and weights up to 268gsm without user intervention.

High duty cycle

With solid-state LED technology and flat paper path, OKI Printing Solutions' MFPs have higher duty cycles than most other multifunction products. The C9000 MFP has a 150,000 print monthly duty cycle, ideal for shared use in high volume environments.

Warranty

Not only are OKI Printing Solutions MFPs robust and reliable, they are backed by a 1-year on-site warranty for complete peace-of-mind.

ENERGY STAR® compliant

As an ENERGY STAR® Partner, OKI Printing Solutions has determined that this product meets the ENERGY STAR guidelines for energy efficiency. Cutting electricity use to save money and reduce environmental impact.

Typical applications

- Powerpoint presentations
- Sales proposals
- Complex spreadsheets
- Graphics
- Newsletters
- Reports
- Point of sale material
- Short-run brochures
- Prospectuses
- Menu cards
- Flyers
- Invoices
- Statements
- Web output
- Business cards
- Banners

OKI C9800 MFP

Options & Accessories

Saddle-stitch Finisher

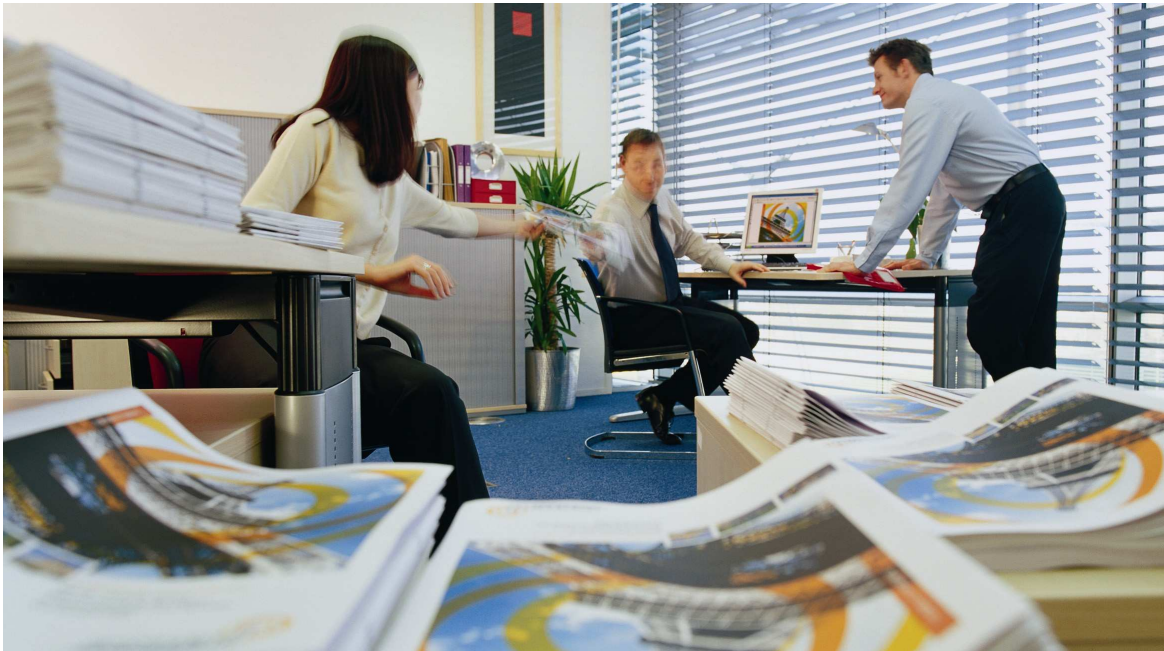
The Finisher provides automatic corner, edge or saddle-stitch finishing for professionally finished, centre-fold booklets, magazines and reports. The Finisher also acts as a collator delivering finished print sets one after the other to a paper station capable of holding up to 1,000 sheets. With the Finisher option, many jobs previously sent to external printers, can be brought in-house.

Finisher Punch Unit

There is a four hole punch option for the Finisher. It provides an on-line punch facility for easy production of documents ready for filing. Pre-punched paper is expensive and manually punching documents can be time consuming. With the Punch option, users can save time and money.

EFI™ Colour Profiling Kit

This tool enables colour profiles to be set up that match screen or print colours. With colour profiling what you see really is what you get. A designers dream! This tool allows the user to create ICC profiles, profile the C9800 MFP, profile monitors and measure and reproduce accurate colours for use in PostScript applications via custom spot colour libraries.



OKI C9800 MFP

What's in the box?

OKI Printing Solutions' MFPs are supplied with everything required for immediate use including start up consumables.

In the box with an OKI Printing Solutions C9800 MFP you will find:

- Aus/NZ power lead
- Operation instructions
- OKI one-year on-site warranty
- Start up toner kit (7,500 pages at 5% coverage)
- EFI Command Workstation 4™
 - EFI DocBuilder™
 - EFI Freeform™
 - EFI Downloader™
 - EFI Mailport™
 - EFI Colorwise Pro Tools™
 - EFI Job Monitor™
- Print Control software
- Print SuperVision software
- OKI Printing Solutions Template Manager
- Storage Device Manager



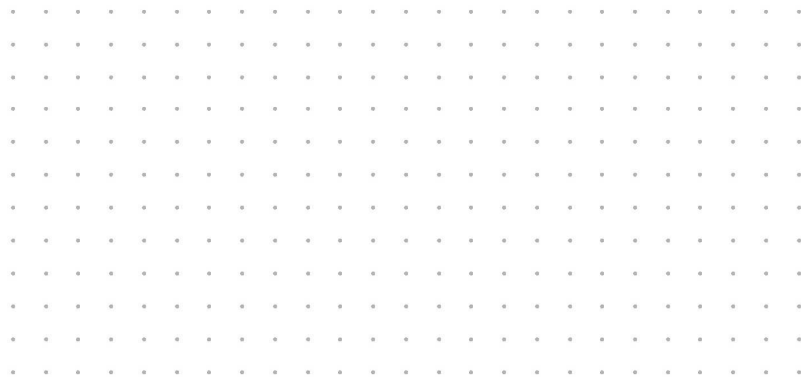
OKI C9800 MFP

Bundled software

Look what you can do with an OKI Printing Solutions MFP! Every MFP from OKI Printing Solutions comes bundled with a full suite of print and colour management software. More information is given below:

OKI Printing Solutions Software

Utility	Feature	Benefits
Ask OKI driver	Single-click web-based support directly from tab in print driver	Easy access to MFP advice and guidance via a direct link, helping you to get the most from your investment in printing
Print SuperVision	A server-based 'back-office' utility to monitor and manage a fleet of networked printers	View real-time status of printers, web based- access anywhere. Report on usage and manage consumables via your network. Primarily for system administrators and support desks. Comprehensive reports - printers or consumable usage, stock management system
Print Control	A printer-resident logging and access control system	Keep control of your printing costs by managing what you print what, where and when. Secure - cannot be bypassed
Template Manager	Imposition software for creating business cards, banners, CD Labels	Simple and easy to use software that makes printing business cards, CD labels and banners very simple to do. Includes preset templates for OKI Printing Solutions media saving complex documents set-up works directly from print driver. Quick and easy to use
Storage Device Manager	Store and manage forms and barcodes	Easily download fonts, forms and barcodes to the MFP's hard disk. Reduces the time needed to download. Downloaded data is processed quickly reduced processing time and freeing resource for other jobs

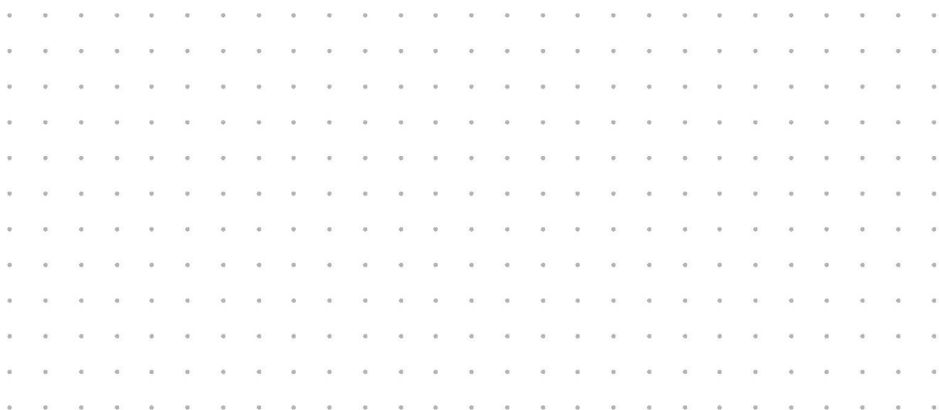


OKI C9800 MFP



EFI Fiery™ software (with C9800 MFP)

Utility	Feature	Benefits
Freeform	Create and save a master file (in processed form) on the MFP hard disk, ensuring only variable data is processed on the MFP	Faster printing of forms and letters as only variable data e.g. names and addresses need to be ripped. Allows variable data jobs to be run on-demand, particularly useful for daily repeat tasks like invoice runs where only data changes
Command WorkStation	Printer management tool for Key users or administrator	Gives key operator control over one or more Fiery™ controllers. Command Workstation allows the key operator to prioritise jobs in the print queue, so that for example urgent work can be printed quickly and non urgent can be printed out of hours
ColorWise	Standard Colour Management Software, that allows printer calibration and the modification of colour tables	Calibrates printer to ensure accurate colour match. Essential for proofing and production brochures. Also useful to ensure consistency of colour on internal communication including PowerPoint. Will help customers present a professional image



OKI C9800 MFP

Consumables

OKI Printing Solutions consumables are developed specifically for OKI Printing Solutions MFPs and are guaranteed to meet OKI Printing Solutions quality standards and advertised yields. Use of genuine OKI Printing Solutions parts and consumables will help protect the user from unnecessary quality and technical issues.

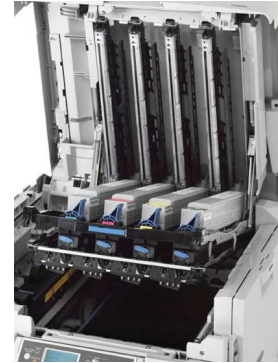
OKI Printing Solutions has developed new spherical toner specifically for the C9800 MFP. Produced through an organic process; the new toner has smaller, more rounded particles than conventional crushed toner, giving better print resolution and excellent quality look and feel to the prints produced. There is no curl and prints have semi-matt look that makes document reading much easier on the eye.

For the protection of the MFP, and in order to ensure that your customers benefit from its full functionality, the C9800 MFP has been designed to operate only with genuine OKI Printing Solutions toner cartridges. These can be identified by the OKI Printing Solutions trademark. Any other toner cartridge may not operate at all, even if it is described as "compatible", and if it does work, the C9800 MFP's performance and print quality may be degraded.

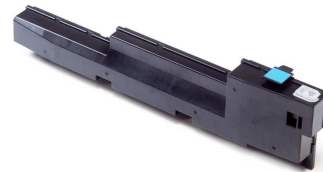
The OKI Printing Solutions' C9800 MFP uses separate drum and toner cartridges. This is another cost-saving feature as unlike all-in-one cartridges where drums are replaced unnecessarily every time toner is replenished, the OKI Printing Solutions drum is replaced only at end of life.



Toner combined with drum – these units are easy to remove and replace.



Toner waste box



Fuser



Transfer Belt



For the protection of an OKI Printing Solutions MFP, and in order to ensure that customers benefit from its full functionality, this model has been designed to operate only with genuine Oki toner cartridges. These can be identified by the Oki trade mark. Any other toner cartridge may not operate at all, even if it is described as "compatible", and if it does work, your MFP's performance and print quality may be

Free Manuals Download Website

<http://myh66.com>

<http://usermanuals.us>

<http://www.somanuals.com>

<http://www.4manuals.cc>

<http://www.manual-lib.com>

<http://www.404manual.com>

<http://www.luxmanual.com>

<http://aubethermostatmanual.com>

Golf course search by state

<http://golfingnear.com>

Email search by domain

<http://emailbydomain.com>

Auto manuals search

<http://auto.somanuals.com>

TV manuals search

<http://tv.somanuals.com>