

ES3640e MFP Software Installation Guide

About this Guide

This guide describes the initial printer driver installation. For more detailed information, refer to the *EFI User Software Installation Guide* and *EFI Configuration Guide* provided on the User Documentation CD (CD3).

The general steps for installing the software are as follows:

- Install the PostScript or PCL printer driver and corresponding printer driver files.
- Set up the printer driver to communicate with the Fiery.
- Install Fiery utilities and user software.
- Configure Fiery utilities and user software.

You must also configure either a local connection for printing directly to your printer or a network connection for printing over a network.

NOTE

A full set of user documentation, where procedures are described in detail, is provided on the User Documentation CD (CD3).

Service and Support

- Consult the dealer where you purchased your system.
- Visit our web site: <http://my.okidata.com>

Windows® TCP/IP Network Installation	2
Novell Installation	7
Macintosh® Installation	8
OS 9.1 to 9.2.x	8
OS X.1+ to X.3+	10

WINDOWS TCP/IP

NETWORK INSTALLATION

SELECTING A PRINTER DRIVER

Select a driver appropriate for your application.

NOTE

For the most recent printer driver version, see our web site: <http://my.okidata.com>

Fiery PostScript printer driver

Use this driver for high-resolution color graphics applications and pre-press graphic proofing. This driver also includes advanced features which may only be used by a network system administrator.

PCL printer driver

PCL and PCL6 printer drivers are included mainly for compatibility with legacy systems.

You can install both drivers and use either one depending on your application. However, each driver must be installed individually.

CAUTION!

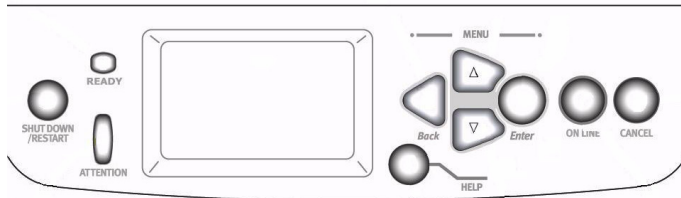
Do not connect this product to an uninterruptible power supply (UPS). For further information please contact Oki Data at 1-800-OKIDATA or <http://my.okidata.com>.

Be sure to use the 15A AC power cord supplied with the printer. Use of a power cord NOT supplied with this printer, or an extension cord, may result in overheating, and could be a safety hazard.

WINDOWS TCP/IP NETWORK INSTALLATION (CONT'D)

1 ASSIGN AN IP ADDRESS TO THE MFP

If you are not using DHCP, you need to obtain an IP Address from your network Administrator and enter it using the front panel:



1. Confirm that the printer displays [**READY TO PRINT**].
2. Press ∇ key until [**ADMIN SETUP**] appears. Press ENTER.
3. **CONTINUE TO SETUP?** displays. Press ENTER to select **YES**. The printer goes offline and **RUNNING SETUP** displays. This will take about a minute.
4. The Setup Menu displays, press ∇ to select **NETWORK SETUP**. Press ENTER.
5. Press ∇ to select **PROTOCOL SETUP**. Press ENTER.
6. Press ∇ to select **TCP/IP SETUP**. Press ENTER.
7. Press ∇ to select **ETHERNET SETUP**. Press ENTER.
8. **TCP/IP ETHERNET** displays. Select **YES** and press ENTER. **ENABLE AUTOIP CONFIG?** displays. Select **NO**. Press ENTER.
9. The default IP Address displays. Use Δ or ∇ to change each octet. Press ENTER to proceed to the next octet or to leave the octet unchanged.
10. **SUBNET MASK** displays. Repeat instructions in step 9.
11. **TCP/IP BOUND TO ETHERNET** displays. Press ENTER.
12. **GATEWAY ADDRESS** displays. Repeat instructions in step 9.
13. Press ENTER to exit TCP/IP Setup, Protocol Setup, and Network Setup.
14. Select **YES** and press ENTER to Save Changes. Press ENTER to Exit the Setup Menu.
15. Printer restarts the server and initializes. **READY TO PRINT** displays.

WINDOWS TCP/IP NETWORK INSTALLATION (CONT'D)

2 INSTALL THE FIERY POSTSCRIPT PRINTER DRIVER

1. Insert the printer driver CD (CD1) into your CD-ROM drive. The CD will autorun.

*If it doesn't autorun, click **Start** → **Run** → **Browse**. Browse to your CD-ROM drive. Double-click **Install.exe**. Click **OK**.*

2. Select your language.
3. Click **Next** to accept the License Agreement.
4. Select **Custom Install** to install the printer driver and the software utilities.

*To install only the printer driver, select **Minimal Install** and skip the next step.*

5. Click the **Printer Driver Installer** button.
6. Select **Network Printer**. Click **Next**.
7. Select **Directly to the Network using TCP/IP**.
8. The TCP/IP Connection screen displays. Select **Search Address**. Click **Next**.
9. Highlight your printer model. Click **Next**.
10. Select **Printer Emulation**. Click **Next**.
11. Follow the on-screen instructions to complete the installation.

Discover the MFP

The LPR Utility is automatically installed with the network printer driver. To discover the printer, do the following:

1. Click **Start** → **Programs** → **Oki Data** → **Oki Data LPR Utility**.
2. Click **Remote Print**. Then, click **Add Printer**.
3. Select your printer model from the drop-down list, then either enter the IP Address manually, or click **Discover** and wait for the printer to be discovered. Click **OK**.

NOTE

In order to send documents to the MFP, the LPR utility must be installed. LPR installs automatically when the drivers are installed using the Menu Installer as instructed here. If drivers are installed using Windows Add Printer Wizard, you must manually load the LPR Utility from the Menu Installer on CD1. To do this, click Custom Install /Network Software/ InstallationConfig/OKI LPR.

3 INSTALL PRINTER UTILITIES

Select **Custom Install** in the Menu Installer on the driver CD (CD1). Choose from these software tools:

• Network Software

Click **Installation/Config** to select utilities for network printing, installation, and configuration.

Click **Administration Tools** to select network management tools.

• Productivity Software

Select Windows printer software.

Follow the on-screen instructions to install the utilities.

WINDOWS TCP/IP NETWORK INSTALLATION (CONT'D)

4 INSTALL THE EFI FIERY UTILITIES

1. Insert the EFI Utilities CD (CD2) into your CD-ROM drive.
2. Select your language.
3. Click **Next** to accept the License Agreement.
4. Select your printer model. Click **Next**.
5. Select **Quick Install** to install only Command WorkStation, or, select **Custom Install** to install your choice of these EFI tools:
 - > Command WorkStation
 - > Fiery Mail Port
 - > Fiery Printer Delete
 - > Fiery Downloader
 - > Fiery ColorWise Pro Tools
 - > Fiery Remote Scan

NOTE

If the computer will not be used by an ES3640e MFP administrator, Command WorkStation may not be required.

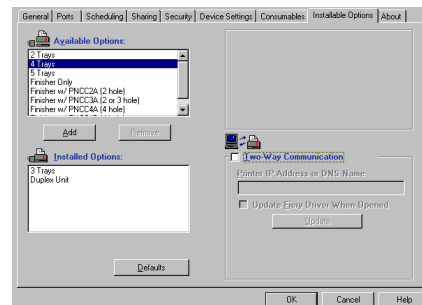
5 ACTIVATING OPTIONS

After you have completed the printer driver installation, you must configure the MFP for the installed options. You can configure the options manually or, for TCP/IP network connections, you can use the Two-Way Communication feature to configure the options automatically.

To Configure Options Manually

1. Click **Start** → **Settings** → **Printers**.
2. Right-click the **OKI ES3640e MFP EFI Fiery** icon.
3. Click **Properties**.
4. Click the **Installable Options** tab.

In PCL emulation, click the Device Options tab and specify the options installed on your printer.



5. Select an installed option from the **Available Options** list.
6. Click **Add** to move the option to the Installed Options list.
7. Click **Apply**. Click **OK**.

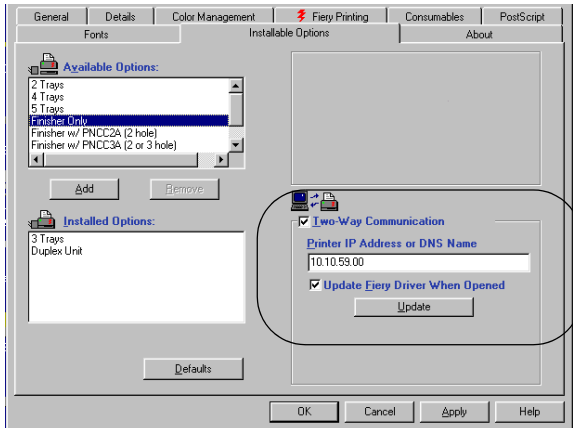
To Configure Options Automatically

If you have a TCP/IP-enabled network, you can automatically update your printer driver to reflect the options currently installed on the printer.

1. Click **Start** → **Settings** → **Printers**.
2. Right-click the **OKI ES3640e MFP EFI Fiery** icon.

WINDOWS TCP/IP NETWORK INSTALLATION (CONT'D)

3. Click **Properties**.
4. Click the **Installable Options** tab.
5. Select Two-Way Communications.



6. Type the Fiery IP address or DNS name.
7. To display the printer's current default settings when opened, select **Update Fiery Driver When Opened**.
8. Click **Update**. Click **OK**.

6 INSTALL THE USER DOCUMENTATION

1. Insert the User Documentation CD (CD3) into your CD-ROM drive. The CD will autorun.

If it doesn't, click **Start** → **Run** → **Browse**. Browse to your CD-ROM drive. Double-click **Install.exe**. Click **OK**.

2. Follow the on-screen instructions.

WINDOWS NETWORK INSTALLATION

NOVELL

1 INSTALL THE UTILITY

This utility installs, configures, and manages Oki network print server devices.

1. Insert the printer driver CD (CD1) into your CD-ROM drive. The CD will autorun.
*If it doesn't autorun, click **Start** → **Run** → **Browse**. Browse to your CD-ROM drive. Double-click **Install.exe**. Click **OK**.*
2. Select your language.
3. The Licence Agreement appears. Click **Next** to accept.
4. Select **Custom Install**.
5. The Menu Installer screen appears.
6. Click the **Network Software** button.
7. Click the **Installation/Config** button.
8. Click the **Admin Mgr/Quick Setup** button.
9. **Setup Assistant** displays. Select your language.
10. Follow the on-screen instructions to complete the installation.

NOTE: You can either install the software while running the utility off the CD, or you can choose to install the utility on your computer and then launch it from there.

2 INSTALL THE MFP ON A NOVELL® NETWORK

Novell Client for Windows must be loaded, the Admin Manager software must be running, and you must be logged in to NDS.

1. Run **Discover**.
2. Select **Setup** from the menu.
3. Click **Create a NetWare Queue**.
4. Select **NDS Mode**. Click **Next**.
5. Select the container. Click **Next**.
6. Select **Print Server Mode**. Click **Next**.
7. Select or create a queue. Click **Execute**.

LAUNCHING THE UTILITY

To launch the utility click **Start** → **Programs** → **Oki Data Setup Utility** → **Admin Manager**.

3 ACTIVATING OPTIONS

If your MFP has optional paper trays or a finisher installed, they must be activated in the printer driver. See page 5 for instructions on how to do this.

NOTE

For more information, see the Configuration Guide on the User Documentation CD.

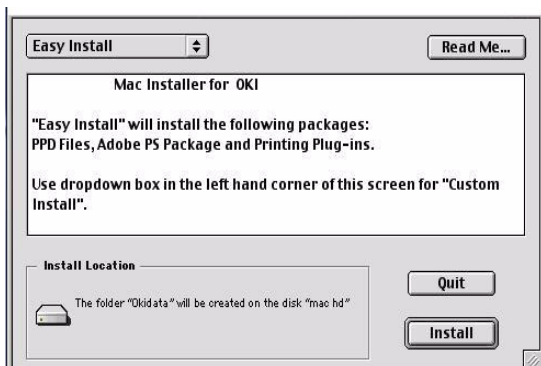
MACINTOSH® INSTALLATION

OS 9.1 TO 9.2.X

1 INSTALL THE DRIVER

1. Turn the MFP ON, then turn the computer ON.
2. Insert the printer driver CD (CD1) into your CD-ROM drive.
3. Double-click the **OKI CD** icon that appears on the desktop.
4. Double-click the **MAC** icon.
5. Double-click Installer for **MAC OS 9**.
6. Double-click **Mac Installer ES3640e MFP**.
7. Click **Continue**.
8. If prompted, select your language.
9. The License Agreement appears. Click **Accept** to accept the terms.
10. Click **Easy Install** to install PPD Files, Adobe PS Package, and Printing Plug-ins.

Click **Custom Install** to install your choice of Adobe PS Package, PPD Files, Adobe PS Options Plug-ins, SDM for MAC, Swatch Utility, Admin Setup Utility, Printing Plug-ins.



11. Click **Continue** to install additional utilities.
12. When the installation is complete, click **Quit**.

2 CREATE THE DESKTOP PRINTER FOR A NETWORK

1. Activate **Chooser** from the Apple menu.

2. Select the **LaserWriter8** icon and highlight the printer name (print server ID#).
3. Click **Create**.
4. Select OKI ES3640e MFP PPD. Click **Select**.
5. Close **Chooser**.

3 CREATE THE DESKTOP PRINTER FOR USB

1. Navigate to **Applications Mac OS 9** → **Utilities**.
2. Double-click the **Desktop Printer Utility** icon.
3. In the drop-down box, select **LaserWriter 8**.
4. Highlight **Printer (USB)** under Create Desktop. Click **OK**.
5. Under USB Printer Selection, click **Change**.
6. Highlight your MFP model. Click **OK**.
7. Click **Create**. The MFP icon appears on the desktop.
8. Click **AutoSetup**.

MACINTOSH® INSTALLATION

OS 9.1 TO 9.2.X (CONT'D)

4 INSTALL THE EFI FIERY UTILITIES

1. Place EFI Utilities CD (CD2) in the CD-ROM drive.
2. Double-click the **OKI CD** icon that appears on the desktop.
3. Double-click the **MAC** icon.
4. Double-click **User Software**.
5. Double-click the **OS X** icon to install Command Workstation LF.
6. Double-click **Mac Color Files** to install CMYK Color Reference, Pantone Book, RGB Page 1, RGB Page 2, and Calibration utilities.
7. Double-click **Color Sync** to install ICC files.
8. Follow the on-screen instructions.

5 INSTALL THE USER DOCUMENTATION

For additional information on using MFP features as well as MFP utilities, see the on-line documentation.

Requirements

- Microsoft Internet Explorer version 4.0 or higher and Acrobat Reader.

To Load

In order to open the on-line documentation, you must have Acrobat Reader installed.

1. Insert the User Documentation CD (CD3) into your CD-ROM drive.
2. From the CD contents folder, drag the **Manual** folder to the desktop.

MACINTOSH® INSTALLATION

OS X.1+ TO X.3+

1 INSTALL THE DRIVER AND UTILITIES

1. Turn the MFP ON, then turn the computer ON.
2. Place the CD supplied with the MFP in the CD-ROM drive.
3. Double-click the OKI CD icon that appears on the desktop.
4. Double-click the **MAC icon**.
5. Double-click the **MAC OS X icon**.
6. Double-click **Installer for MAC OS X**.
7. If prompted, select your language.
8. License Agreement appears. Click **Accept** to accept the terms.
9. Click the **Install** button.
10. Click **Quit**.

2 ADDING THE MFP

1. Run the Print Center (or Print Setup Utility X.3). Click **Add printer**.
2. Select **IP Printing** from the drop down menu.

NOTE: If you are using USB, select USB and disregard the following step.

3. Enter the MFP's IP address.
4. From the Printer Model drop down menu, select the correct PPD for your printer model. Click **Add**.
5. Quit the Print Center.

In order to use the IP Printing connection, the user may need to enter the Queue name as "Direct", "Print", or "Hold" instead of the default blank.

3 INSTALL THE EFI FIERY UTILITIES

1. Place CD2 in the CD-ROM drive.
2. Double-click the **OKI CD** icon that appears on the desktop.
3. Double-click the **MAC** icon.
4. Double-click **User Software**.
5. Double-click the **OS X** icon to install Command Workstation LF.
6. Double-click **Mac Color Files** to install CMYK Color Reference, Pantone Book, RGB Page 1, RGB Page 2, and Calibration utilities.
7. Double-click **Color Sync** to install ICC files.

Follow the on-screen instructions.

MACINTOSH® INSTALLATION

OS X.1+ TO X.3+ (CONT'D)

4 INSTALL THE USER DOCUMENTATION

For additional information on using MFP features as well as MFP utilities, see the on-line documentation.

Requirements

- Microsoft Internet Explorer version 4.0 or higher and Acrobat Reader.

To Load

In order to open the on-line documentation, you must have Acrobat Reader installed.

1. Insert the User Documentation CD (CD3) into your CD-ROM drive.
2. From the CD contents folder, drag the **Manual** folder to the desktop.

Trademarks

OKI is a registered trademark of Oki Electric Industry Company, Ltd.

Microsoft, Internet Explorer and Windows are either registered trademarks or trademarks of Microsoft Corporation in the United States and other countries.

Microsoft, MS-DOS and Windows are registered trademarks of Microsoft Corporation.

Apple, Macintosh, Mac and Mac OS are registered trademarks of Apple Computer.

Other product names and brand names are registered trademarks or trademarks of their proprietors.

Command WorkStation, EFI, Fiery, the Fiery logo are registered trademarks of Electronics for Imaging, Inc., in the U.S. Patent and Trademark Office and/or certain other foreign jurisdictions.

All other terms and product names may be trademarks or registered trademarks of their respective owners, and are hereby acknowledged.

Pantone, Inc. is the copyright owner of color data and/or software which are licensed to Electronics for Imaging, Inc., to distribute for use only in combination with the products, or software of Electronics for Imaging, Inc. PANTONE Color Data and/or Software shall not be copied onto another disk or into memory except as part of the delivery of the Electronics for Imaging, Inc., products or software.

Oki Data Americas, Inc., 2000 Bishops Gate Blvd., Mt. Laurel, NJ 08054-4620
Tel: 1-800-654-3282 (856) 235-2600 Fax: (856) 222-5320 <http://my.okidata.com>

© 2005 Oki Data Americas, Inc.

59376001

Free Manuals Download Website

<http://myh66.com>

<http://usermanuals.us>

<http://www.somanuals.com>

<http://www.4manuals.cc>

<http://www.manual-lib.com>

<http://www.404manual.com>

<http://www.luxmanual.com>

<http://aubethermostatmanual.com>

Golf course search by state

<http://golfingnear.com>

Email search by domain

<http://emailbydomain.com>

Auto manuals search

<http://auto.somanuals.com>

TV manuals search

<http://tv.somanuals.com>