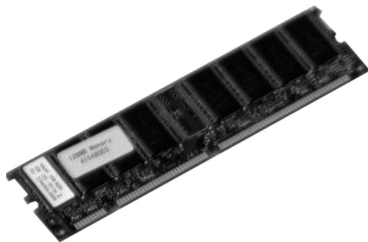


**OKI 70037401,  
70037501 & 70037601**



**Memory DIMM  
Installation Instructions**

Every effort has been made to ensure that the information in this document is complete, accurate, and up-to-date. Oki Data assumes no responsibility for the results of errors beyond its control. Oki Data also cannot guarantee that changes in software and equipment made by other manufacturers and referred to in this guide will not affect the applicability of the information in it. Mention of software products manufactured by other companies does not necessarily constitute endorsement by Oki Data.

Copyright 2001 by Oki Data Americas, Inc.. All rights reserved.

Written and produced by the Oki Data Training & Publications Department. Please address any comments on this publication

*by mail to:*

Training & Publications Dept.  
Oki Data Americas, Inc.  
2000 Bishops Gate Blvd.  
Mt. Laurel, NJ 08054-4620

*or by email to:*

pubs@okidata.com

For the latest product information, printer drivers, manuals, special offers, etc., we welcome you to visit our multilingual web site:

**<http://www.okidata.com>**

OKI is a registered trademark/marque déposée/marca registrada Oki Electric Industry Company, Ltd. Adobe and PostScript are trademarks of Adobe Systems, Inc. which may be registered in certain jurisdictions. Macintosh is a trademark of Apple Computer, Inc., registered in the U.S. and other countries. Windows and Windows NT are either registered trademarks or trademarks of Microsoft Corporation in the United States and other countries.

# Getting Started

The printers have four sockets for memory DIMM boards. You can expand the printer's memory up to 1 GB by installing four 256-MB DIMMs. To achieve the 1 GB memory in most models, you will need to replace the DIMM(s) provided with 256 MB DIMMs:

Model	Memory Provided
C7200	64 MB
C7200n	64 MB
C7400n	128 MB
C7400dxn	256 MB
C9200	128 MB
C9200n	128 MB
C9200dxn	192 MB (64 + 128 MB)
C9400dxn	320 MB (64 + 256 MB)

## **Caution!**

***Circuit boards can be damaged by static electricity and rough handling. Keep board in packaging until you're ready to install it. DIMMs are sensitive to static electricity. To avoid damage, ground yourself before handling DIMMs.***

# Prepare the Printer

- 1 Turn the printer off and unplug the power cord.
- 2 Detach the interface cable from the printer.
- 3 Remove and save the thumbscrew at the top and bottom which hold the control board in place.

## C7000 Series



## C9000 Series



- 4 Grasp the control board, loosen it by wiggling it back and forth, and slide it out of the printer.

### **C7000 Series**

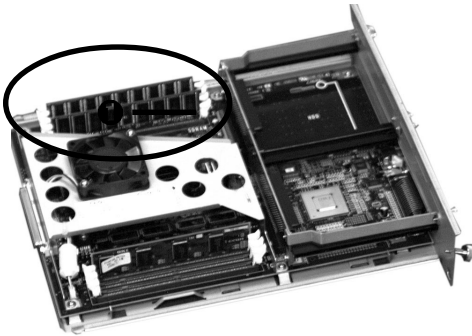


### **C9000 Series**

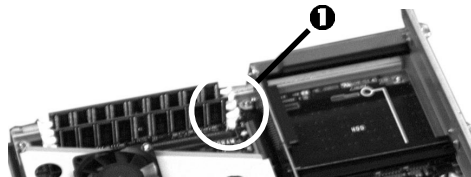


# Install the DIMM(s)

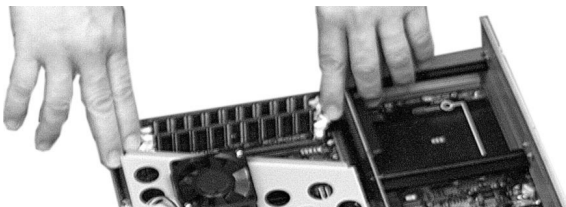
1 Locate the DIMM sockets (1) on the control board.



- ! *DIMMs must be installed in the socket number sequence 1-3-2-4.*
- *Socket numbers (1) are located at the end of the sockets nearest the front of the board.*



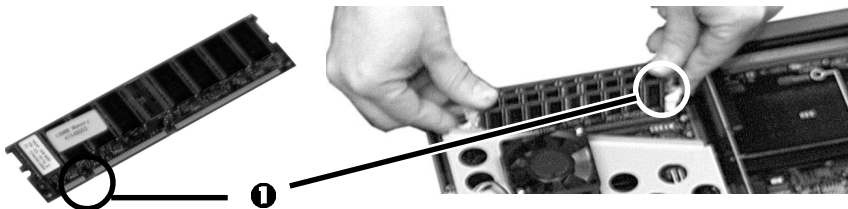
- 2 Push out the white lock tabs at either end of the DIMM socket.



**Caution!**

*Circuit boards can be damaged by static electricity and rough handling. To avoid damage, ground yourself before handling DIMMs.*

- 3 Remove the DIMM from its shipping package.
- 4 Align the DIMM with the narrow strip (1) on its metallic contact edge toward the front of the control board, then carefully insert the DIMM in the socket. Press down *firmly*, until you feel the board engage the connector, then make sure the white tabs come up to lock the DIMM in place.



- 5 Repeat steps 2 through 4 for each DIMM being installed.

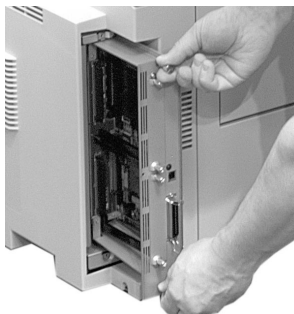
# Complete the Installation

- 1 Align the bottom of the control board with the track in the printer and slide it back into place.

**C7000 Series**



**C9000 Series**





2 Reinstall the thumbscrews at the top and bottom of the board.

### **C7000 Series**



### **C9000 Series**

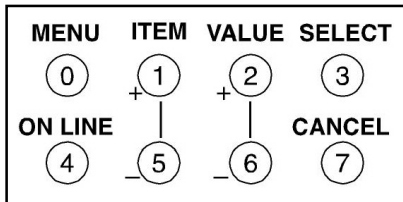


3 Reattach the computer interface cable.

4 Plug the power cord into the power outlet and turn the printer on.

# Check for Proper Installation

Generate a MenuMap printout and check to be sure that the DIMMs are properly installed:



- 1 Press MENU once or twice until INFORMATION MENU appears on the display.
- 2 Press SELECT.  
PRINT MENU MAP *appears on the display.*
- 3 Press SELECT.  
*The MenuMap prints.*
- 4 Check the top of the MenuMap printout to verify that the DIMMs you installed are listed (they will appear as DIMMs).

! ***If the DIMM is not listed at the top of the MenuMap printout, remove the board and make sure the memory DIMM is firmly in place, then print the MenuMap again.***

# Change the Memory Setting in the Driver(s)

## Windows® Adobe® PostScript® Driver

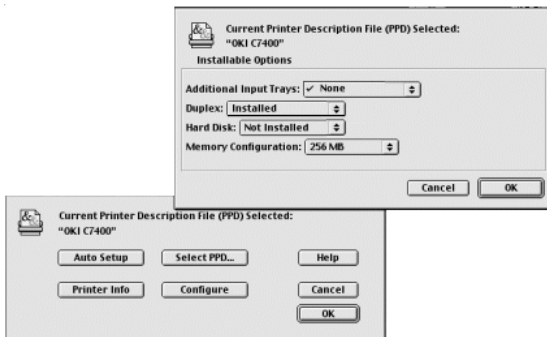
- 1 Click **Start** → **Settings** → **Printers**.  
*The **Printers** dialog box opens.*
- 2 Right click the appropriate OKI (C7200, C7400, C9200 or C9400) PostScript driver icon, then click **Properties**.
- 3 *Windows 2000 & NT 4.0:*
  - a Click the **Device Settings** tab.
  - b Scroll down to **Installable Options** and click **Memory Configuration**.
  - c Under **Change ‘Memory Configuration’ Setting**, click the total memory installed (original plus the memory you just installed).*Windows Me, 98 & 95*
  - a Click the **Device Options** tab.
  - b Click **Memory Configuration**.
  - c Under **Change setting for: Memory Configuration**, click the total memory installed (original plus the memory you just installed).
- 4 Click **OK**, then close the **Printers** dialog box.

## Windows PCL Driver

No changes are necessary in the PCL driver.

# Macintosh® Driver

- 1 Activate **Chooser** from the **Apple** menu.
- 2 Select **LaserWriter 8**.
- 3 Click **Printer** → **Setup**.
- 4 Click **Configure**.
- 5 Change the **Memory Configuration** setting to match the total DIMM memory installed (original plus the new memory you just installed):



- 6 Click **OK** twice, then close **Chooser**.

# Limited Warranty: United States & Canada

Oki Data Americas, Inc. (Oki Data) warrants this OPTION to be free from defect in material and workmanship and will remedy any such defect according to the terms of this *Limited Warranty*.

Oki Data will repair (or at its option, replace) at no charge, any defective part(s) of the OPTION for one (1) year from the date of purchase. This *Limited Warranty* extends to the original purchaser only.

To make request or claim for service under this Limited Warranty the original purchaser must return the Oki Data product, shipping prepaid, in the original shipping container or equivalent, to Oki Data or an authorized Oki Data service center and assume the risk of loss or damage in transit. A written receipt for the product, showing the date of purchase, dealer's name, and item purchased must accompany any request or claim for work to be performed under this Limited Warranty.

This *Limited Warranty* shall not apply if the product has been damaged due to abuse, misuse, misapplication, accident, or as a result of service or modification by any other than an authorized Oki Data service center.

**THERE ARE NO EXPRESS WARRANTIES OTHER THAN THOSE ON THE FACE HEREOF AND DESCRIBED ABOVE. NO WARRANTIES WHETHER EXPRESS OR IMPLIED, INCLUDING, BUT NOT LIMITED TO, ANY**

IMPLIED WARRANTIES OF MERCHANTABILITY OR FITNESS FOR A PARTICULAR PURPOSE, SHALL EXTEND BEYOND THE RESPECTIVE WARRANTY PERIOD DESCRIBED ABOVE OF ONE (1) YEAR. Some states do not allow limitations on how long an implied warranty lasts, so the above limitation may not apply to you.

OKI DATA SHALL NOT BE RESPONSIBLE OR LIABLE FOR ANY SPECIAL, INCIDENTAL OR CONSEQUENTIAL DAMAGES OR LOSS ARISING FROM THE USE OF THIS PRODUCT. Some states do not allow the exclusion or limitation of incidental or consequential damages, so the above exclusion may not apply to you.

Additional information on obtaining service under this *Limited Warranty* is available by contacting the Oki Data dealer from whom the product was purchased, by contacting Oki Data directly at 1-800-OKI-DATA (U.S. and Canada), or by contacting one of the service depots listed on the next page.

This *Limited Warranty* applies to this Oki Data Option. However, the procedure for obtaining service may vary outside the continental United States. Contact your Oki Data dealer for such warranty service information.

This warranty gives you specific legal rights, and you may also have other rights which vary from state to state.

For the most comprehensive, up-to-date listing of Oki Data authorized Service Centers, go to <http://www.okidata.com> and click on **Dealer Locator** or call 1-800-OKI-DATA (1-800-654-3282).

# Oki Data Service Depot Information

## **UNITED STATES**

**Oki Data Americas, Inc.**  
2020 Bishops Gate Blvd.  
Mt. Laurel, NJ 08054

*Tel:* 1-800-654-3282

*Fax:* 1-856-222-5247

## **CANADA**

**Oki Data Americas, Inc.**  
2735 Matheson Blvd. East, Unit 1  
Mississauga, Ontario  
Canada L4W 4MB

*Tel:* 800-654-3282

*Fax:* 905-238-4427

## **MEXICO**

**Oki Data de Mexico, S.A. de C.V.**  
Mariano Escobedo No. 748 - 8 Piso  
Col Anzures, e.p. 11590  
Mexico, DF

*Tel:* (525) 263-8780

*Fax:* (525) 263-8785

## **BRAZIL**

**Oki Data do Brasil, Ltda.**  
Rua Alexandre Dumas, 2220 - 8 andar  
Chácara Sto Antonio  
São Paulo 04717-004, Brasil

*Tel:* 55 11-3444-3500

*Fax:* 55 11-3444-3501

Oki Data Americas, Inc.  
2000 Bishops Gate Blvd.  
Mt. Laurel, NJ 08054-4620

Tel: (800) 654-3282

FAX: (856) 222-5320

<http://www.okidata.com>

**58346602**



## Free Manuals Download Website

<http://myh66.com>

<http://usermanuals.us>

<http://www.somanuals.com>

<http://www.4manuals.cc>

<http://www.manual-lib.com>

<http://www.404manual.com>

<http://www.luxmanual.com>

<http://aubethermostatmanual.com>

Golf course search by state

<http://golfingnear.com>

Email search by domain

<http://emailbydomain.com>

Auto manuals search

<http://auto.somanuals.com>

TV manuals search

<http://tv.somanuals.com>