

OKIDATA®

OKIPAGE® *20 Series* PAGE PRINTERS

PAGE
PRINTERS

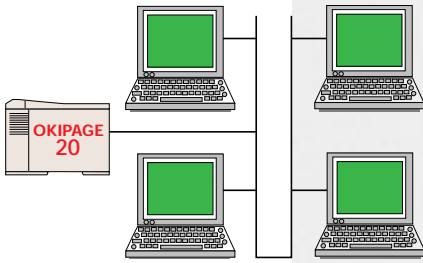
The advanced
20 PPM printers
for medium
to large
workgroups.



HIGHER SPEED AND ADVANCED FEATURES FOR GREATER PRODUCTIVITY.

*Raise workgroup
productivity to
a higher level with
the OKIPAGE 20
Series Printers
from OKIDATA.*



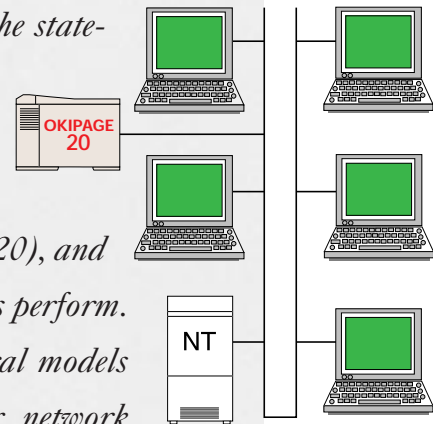


Peer-to-Peer Networking

DESIGNED TO FIT YOUR BUSINESS... TODAY AND TOMORROW

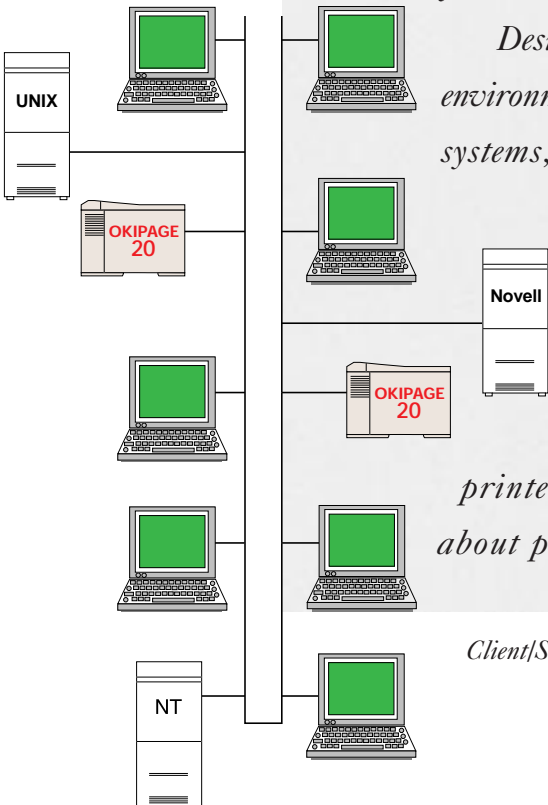
The OKIPAGE 20 Series Workgroup Printers are built to handle the rigorous demands of growing network printing environments. For medium to large workgroups, the OKIPAGE 20 Series offers a variety of features designed to increase productivity. From the state-of-the-art OkiLAN® network interface with OkiVIEW® management software – to two-sided duplex printing (standard on the 20 DX and 20 DXn – optional on the 20), and the 20's large paper capacity, these printers perform.

The OKIPAGE 20 Series offers several models configured out-of-the-box for duplex or network applications, making it easy to get the right printer for your network needs, now and in the future.



Networking with an NT System

Designed to connect to a multitude of network environments, and compatible with most operating systems, OKIPAGE 20 Series Printers can be configured for peer-to-peer workgroups, individual users, or several network servers. Their unsurpassed performance in a variety of network applications makes the OKIPAGE 20 Series the printers of choice for workgroups serious about productivity.



Client/Server Networking

OKIDATA's OKIPAGE 20 Series Printers are the durable, high-speed network printers designed to power up your workgroup's productivity. They're perfect for medium to large workgroups that need higher speed and greater throughput for shared/network environments. With the OKIPAGE 20 you get faster print speed, advanced performance features, network efficiency and outstanding reliability that comes from OKIDATA's legendary tank tough printhead technology – ensuring that your OKIPAGE 20 will be on the job – keeping you productive long after other competitive printers have quit.

- *Fast 20 pages-per-minute speed*
- *True 600 dpi and 600 x 1200 dpi graphics*
- *Long-running 50,000 pages/month duty cycle*
- *Outstanding connectivity to most popular network environments: Novell Netware®, NT®, Unix®, OS/2®*
- *Supports Windows® NT 4.0/3.51, Windows 95 and 3.1x operating systems – and Macintosh® via PostScript™ option*
- *Duplex printing – prints both sides of a sheet (standard on OKIPAGE 20DX and 20DXn – optional on OKIPAGE 20)*
- *Optional flash memory for forms, barcodes, graphics and more*
- *4MB RAM standard – upgradable to 68MB*

*OKIPAGE 20 configured with optional 2nd tray mechanism.
Standard Tray: 530 sheets
Manual Feed: 100 sheets
2nd Tray: 530 sheets*

Paper capacity shown: 1160 sheets



OKIPAGE® 20

ADVANCED FEATURES ENHANCE WORKFLOW AND CUT COSTS

The OKIPAGE 20 Printers are packed with advanced performance features and smart, time-saving options that speed your group's workflow and make you more efficient. Engineered with greater print speed and an exceptional duty cycle for higher volumes, the OKIPAGE 20 Series Printers are rugged and built to run long and fast. Business correspondence, proposals, spreadsheets and complex graphics print quickly and smoothly with superlative resolution on a wide variety of business media including overhead transparencies, envelopes, card and label stock. The 20 Series gives you maximum paper handling for excellent productivity. During unattended print runs, especially in

shared environments, the OKIPAGE 20's huge paper capacity keeps your jobs rolling. Automatic tray linking reduces reloading intervention by supporting up to three separate "whole ream" paper sources. Two optional 530-sheet paper trays and a multi-purpose feeder option create a total of five paper sources to let you construct practically any combination of stocks you need in a document: letterhead in the first tray; standard sheets in the second; invoices in the third; and envelopes in the multi-purpose feeder, or practically any other way you want to do it. It's a smart way to boost your productivity.



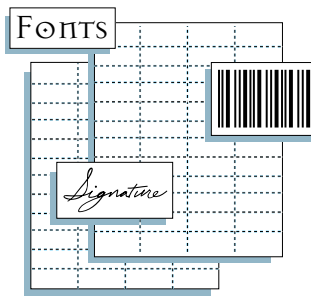
Network Interface Card – a productivity enhancing option.

DOUBLE UP ON EFFICIENCY WITH DUPLEXING

The OKIPAGE 20's optional duplexer enhances your speed and efficiency even more by enabling you to print both sides of a sheet – saving time, cost and natural resources. That translates directly to your bottom line – reducing your cost per copy and lowering total cost of ownership. Even for smaller workgroups the savings add up quickly.

MEMORY THAT SAVES TIME AND MONEY

The OKIPAGE 20 can simplify practically any job – making short work of even complex, memory-intensive projects. If you need additional memory, just plug it in – and with flash memory options you can store and print forms, signatures, special fonts – even barcodes can be accessed instantly during printing. It's a tremendous savings in time and cost that can practically eliminate the need for pre-printed forms.



Flash memory lets you store and print forms, unique bar codes and signatures.

IT WORKS THE WAY YOU DO

The OKIPAGE 20 Series network functionality works to your advantage. Easy-to-install network cards make it a snap to add users, and the 20 is versatile and flexible enough to accommodate a wide variety of network configurations. It works the way you do – optimizing your particular workgroup's style and flow, giving each user uninterrupted access to the printer. The OKIPAGE 20 Printers support all major operating systems and are compatible with most custom and off-the-shelf software – so you'll look good in any environment. If you want Adobe® PostScript™ Level 2, it's an easy snap-in upgrade as well.



BETTER SUPPORT ALSO MEANS HIGHER PRODUCTIVITY

OKIPAGE 20 Series Printers are engineered to give you years of dependable high-quality printing even under the most punishing multi-user conditions. Built into your OKIPAGE 20 is OKIDATA's legendary reliability with a 5-Year Limited Printhead Warranty. And wrapped around the entire printer is a 1-Year On-site Limited Warranty to keep your business up and running. And OKIDATA goes even further, with toll-free customer technical support 24 hours-a-day/7 days-a-week...because we know your business depends on your printer.

THE CLEAR CHOICE

Speed, efficiency, ease of use, warranty and support...they all add up to make the OKIPAGE 20 Series Workgroup Printers the clear choice for your high-productivity network.



OKIPAGE® 20DXn

OKIPAGE 20DXn configured with standard duplexer and optional second and third tray mechanisms and multi-feeder.

Standard Tray: 530 sheets

Manual Feed: 100 sheets

Multi-Feed: 100 sheets

2nd Tray: 530 sheets

3rd Tray: 530 sheets

Paper capacity shown: 1790 sheets

OKIPAGE® 20 Series

20 PPM PAGE PRINTERS

OKIPAGE 20 DX FEATURES SAME AS STANDARD OKIPAGE 20 WITH DUPLEX PAPER MECHANISM.

OKIPAGE 20 DXn HAS BOTH DUPLEX MECHANISM AND ETHERNET NETWORK ADAPTER CARD AS CONFIGURED.

PERFORMANCE

PRINT SPEED: 20 PAGES PER MINUTE

PRINT RESOLUTION: 600 DPI WITH 600 x 1200 GRAPHICS

ENDURANCE: 50,000 PAGES PER MONTH

RESIDENT MEMORY: 4 MB STANDARD RAM; 68 MB MAXIMUM RAM

COMPATIBILITY: HP® LASERJET® 4000 SERIES EMULATION (PCL®6 COMPATIBLE); IBM® PRO-PRINTER III XL AND EPSON FX (9-PIN COMPATIBLE)

MICROPROCESSOR/SPEED (MHz): MIPS R3000/40

INTERFACING

INTERFACES: BI-DIRECTIONAL PARALLEL PORT, IEEE-1284 COMPLIANT; INTERNAL SERIAL INTERFACE RS232-C.

PAPER HANDLING

STANDARD PAPER INPUT: 530-SHEET LETTER/LEGAL/UNIVERSAL TRAY

MANUAL FEED INPUT: 100 MULTI-SHEETS; 10 ENVELOPES; MAILING LABEL STOCK; OVERHEAD TRANSPARENCIES

STANDARD PAPER OUTPUT: 250 SHEETS, FACE DOWN

ALTERNATE PAPER OUTPUT: 100 SHEETS, FACE UP

PAPER WEIGHT: 16-28 LB MAIN TRAY; 16-36 LB MULTI-MANUAL FEED; 16-28 LB 2ND/3RD TRAY; DUPLEX 16-24 LB

RESIDENT FONTS

SCALABLE FONTS: 35 PCL SCALABLE FONTS; 10 TRUETYPE SCALABLE FONTS

BITMAP FONTS: 4 FONTS (LINE PRINTER, USPS POSTNET™ BARCODE, OCR-A, OCR-B)

ENVIRONMENTAL

SIZE (WxDxH): 14.4" x 18.2" x 13.0" (366MM x 462MM x 331MM)

WEIGHT: 42 LB (19.0 KG)

POWER: 120 VAC 50/60 Hz, 230 VAC 50/60 Hz

WARRANTY

1-YEAR LIMITED ON-SITE WARRANTY ON PARTS AND LABOR

5-YEAR LIMITED LED PRINTHEAD WARRANTY

RELIABILITY

TONER CARTRIDGE LIFE: 5,000 PAGES (5% DENSITY)

IMAGE DRUM LIFE: 30,000 PAGES (CONTINUOUS PRINTING)

OPTIONS AND ACCESSORIES

MEMORY UPGRADE: 4, 8, 16 MB SIMMs USING STANDARD 72-PIN MEMORY MODULES OR FLASH MEMORY SIMM

NETWORK INTERFACE CARDS: OkiLAN® 510e ETHERNET® NETWORK ADAPTER CARD; OkiLAN® NETWORK UTILITY SOFTWARE ALSO INCLUDED

PAPER TRAYS: 530-SHEET LEGAL/UNIVERSAL 2ND/3RD TRAY MECHANISM (16-28 LB); 100-SHEET/50-ENVELOPE POWER FEEDER.

ORDERING INFORMATION

OKIPAGE 20 PRINTER:

120V (ENGLISH)	62413201
220V (MULTI-LINGUAL)	62413202
120V (MULTI-LINGUAL)	62413203

OKIPAGE 20 DX PRINTER:

WITH DUPLEX MECHANISM:

120V (ENGLISH)	62413204
220V (MULTI-LINGUAL)	62413205
120V (MULTI-LINGUAL)	62413206

OKIPAGE 20 DXn PRINTER:

12 MB RAM, POSTSCRIPT™, WITH DUPLEX MECHANISM AND ETHERNET NIC I/F:

120V (ENGLISH)	62413207
220V (MULTI-LINGUAL)	62413208
120V (MULTI-LINGUAL)	62413209

MEMORY/UPGRADE:

4 MB SIMM	70028801
-----------	----------

PAPER TRAYS:

2ND AND 3RD PAPER TRAY MECHANISM (530-SHEET)	40346401
MULTI-PURPOSE FEEDER	40352801
DUPLEX FEEDER	70033301

SUPPLIES:

TONER "TYPE 7 SERIES"	40468801
IMAGE DRUM CARTRIDGE "TYPE 7 SERIES"	40468701
IEEE-1284 BI-DIRECTIONAL PARALLEL I/F CABLE	70000803

INTERFACE CARDS:

ADOBE® POSTSCRIPT LEVEL 2 SIMM KIT	70032701
OKiLAN 510e ETHERNET NETWORK ADAPTER CARD	70032801
FLASH MEMORY SIMM 4 MB	70032601
FLASH MEMORY SIMM 8 MB	70033201

Specifications are subject to change without notice. OKIDATA, OKIPAGE, OkiVIEW, OkiLAN Reg. T.M., OKI Electric Industry Company, Ltd.; PCL Reg. T.M. Hewlett Packard Company; Epson Reg. T.M. Seiko Epson Corp.; Proprinter, OS/2 Reg. T.M. International Business Machines Corp.; TrueType Reg. T.M. Apple Computer, Inc.; Ethernet Reg. T.M. Digital Equipment Corp.; Adobe Reg. T.M., PostScript T.M. Adobe Systems Inc.; Novell, Netware, Unix Reg. T.M. Novell Corp.; Energy Star T.M. U.S. EPA.

© 1998 OKIDATA, Division of OKI America, Inc.
Printed in the U.S.A.

MS-9861/0198

OKIDATA®

OKIDATA
532 FELLOWSHIP ROAD
MOUNT LAUREL, NJ 08054
TEL: 800.OKIDATA
FAX: 609.222.5320

OKIDATA
2735 MATHESON BLVD. EAST
MISSISSAUGA, ONTARIO L4W 4M8
TEL: 905.238.4250
FAX: 905.238.4421

OKIDATA DIVISIÓN INTERNACIONAL
532 FELLOWSHIP ROAD
MOUNT LAUREL, NJ USA 08054
TEL: 609.231.0002
FAX: 609.222.5071

WEB SITE: <http://www.okidata.com>



As an Energy Star Partner, OKIDATA has determined that this product meets the Energy Star guidelines.

Free Manuals Download Website

<http://myh66.com>

<http://usermanuals.us>

<http://www.somanuals.com>

<http://www.4manuals.cc>

<http://www.manual-lib.com>

<http://www.404manual.com>

<http://www.luxmanual.com>

<http://aubethermostatmanual.com>

Golf course search by state

<http://golfingnear.com>

Email search by domain

<http://emailbydomain.com>

Auto manuals search

<http://auto.somanuals.com>

TV manuals search

<http://tv.somanuals.com>