



Fast 24 ppm Printing for High-Volume Networks.



The success of any business ultimately comes down to controlling costs. That includes providing each workgroup with the tools they need to streamline workflow and increase productivity. Which is precisely why we've developed the OKIPAGE[®] 24DX Series of network printers, equipped with

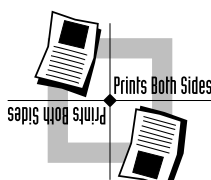
standard features designed to enhance the production of the entire workgroup. Their high-speed engine (boosted by the powerful R4700, 120 MHz micro-processor) and Digital LED Printing Technology

deliver legendary OKI[®] reliability and true 600-dpi quality at a super-fast 24 pages per minute.

The OKIPAGE 24DX Series also includes true Adobe[®] PostScript[®] technology—the worldwide standard for high-quality imaging—so users can reliably print anything and everything, from simple office memos to visually-rich presentations, Web pages or product brochures.

Double your productivity with duplex printing

Standard with every OKIPAGE 24DX is its duplex (2-sided) printing capability. Digital LED technology allows the OKIPAGE 24DX Series duplexer to print on both sides of a sheet at full-engine speed (12 pages per minute, 2-sided, so



Digital LED technology allows for duplex (2-sided) printing at full engine speed.

you still get 24 impressions per minute!) The bottom line is a better bottom line: you save time and money on natural resources, ultimately lowering your cost per page and total cost of ownership of printed communication.

A workgroup workhorse

Load it up and let it run! The OKIPAGE 24DXn features an enormous 1160-sheet paper capacity by including as a standard feature a 530-sheet second paper tray for even greater paper options. The OKIPAGE 24DX comes standard with 630 sheets of paper capacity. Both expand to a maximum of 1790 sheets to keep cranking out your documents unattended. Fewer reloads means less time attending to the printer, and more time attending to business. And other input options, such as the multi-purpose feeder, provide even greater hands-off functionality that further enhance office productivity.

The OKIPAGE 24DX features 16 MB of memory standard, while the OKIPAGE 24DXn includes 32 MB standard, so they can handle even complex and graphics-intensive documents. You can also plug in additional memory, up to 80 MB worth.

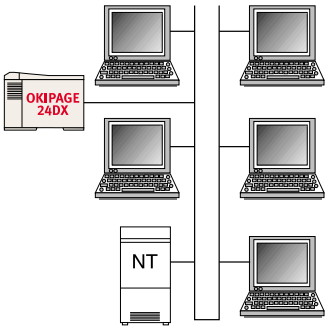
Configured for your business

No matter what kind of network you have, the OKIPAGE 24DX Series is ready to go right out of the box. It features full cross-platform compatibility with Windows[®], MS-DOS[®] and Macintosh[®] operating systems.

The OKIPAGE 24DX Series—advanced features, superior performance, exceptional reliability and the best value in its class. It's the ultimate network printer, and the smart choice for any fast-paced office.

The best printer for reliable 2-sided network printing.

The OKIPAGE® 24DX Series: Plugged in to the way your network works



NT SYSTEM
Networking with an NT System

Integrating the OKIPAGE 24DX Series into your network is a snap with an OkiLAN® internal print server. Considering the wide range of advanced features and time- and money-saving benefits the OKIPAGE 24DX Series provides, it would be a shame *not* to share it over the network.

OKI® has a broad range of experience in supporting the networking capabilities of its printers. OkiLAN print servers enable the high-volume performance and reliability of the OKIPAGE 24DX Series in a wide variety of network environments.

OKI offers a choice of internal and external network print servers to meet the needs of the most popular configurations of Ethernet networks. They also enable the high performance and reliability of the OKIPAGE 24DX Series to be shared in a wide variety of network environments.

The OKIPAGE 24DXn printer ships factory-configured with the OkiLAN 6100e internal print server. The OKIPAGE 24DX printer can also be equipped with the OkiLAN 6100e, or a variety of other OkiLAN print server options, such as the OkiLAN 510e internal print server or the OkiLAN 6010e external print server.

High performance, lower “cost per seat”

The OkiLAN 6100e 10/100BASE-T Ethernet print server connects your printer to 10BASE-T or 100BASE-T Ethernet networks, and supports multiple protocols so you can be assured it will work in your network environment.

It's built to handle the rigorous demands of practically any multiple-user environment—even groups of up to 30—without hindering printing performance.



Which OKIPAGE 24DX Series Digital LED Printer is right for you?

OKIPAGE 24DX: 24 ppm, duplex printing standard

OKIPAGE 24DXn: same as 24DX, but with OkiLAN 6100e 10/100BASE-T Ethernet internal print server, 530-sheet 2nd paper tray, and 32 MB of RAM standard



OKIPAGE 24DXn

Not only does that automatically increase productivity within the entire team, it also significantly lowers your "cost per seat." It's the completely sharable, affordable network printing solution.

Place it where you need it

Another valuable asset of OkiLAN® print servers is that they enable you to place the OKIPAGE® 24DX Series Digital LED Printer anywhere on the network, wherever is most convenient for those who use it most. This means you can centralize each printer within each workgroup, saving valuable time and shoe leather by minimizing the distance users need to go to retrieve their printouts.

Easy to manage with OkiVIEW® 32

OkiVIEW 32 print server configuration software, included with OkiLAN print servers, is a powerful and efficient configuration and management tool that lets network managers take full advantage of networked printers.

This intuitive software utility lets you easily control, configure and monitor any network-connected OKI® print server, minimizing the time and hassle of manually managing every printer on the network.

It's all point-and-click simple.

OkiLAN 6100e+ Internal Print Server

A high-performance internal print server for 10/100BASE-T Ethernet networks.

- Novell® IPX/SPX with NDS® technology
- TCP/IP protocol suite with additional software utilities for UNIX®
- Hard to find Banyan® VINES® protocol standard
- Extremely user-friendly installation and configuration software—automatic installation script for Windows NT® support
- Built-in Web page for easy configuration and status through any Web browser
- Also supports DLC and Apple® EtherTalk® protocols



OkiLAN 6010e Pocket Print Server

Economical, external 10BASE-T print server solution for Novell NetWare®, Windows NT® and UNIX environments.

- Full Novell IPX/SPX with NDS technology
- TCP/IP protocol support with additional software utilities for UNIX
- Miniature external design provides flexibility and versatility—works with virtually any printer that has an IEEE-1284 parallel port and built-in hardware emulation
- Built-in Web page for easy configuration and status through any Web browser
- Economical, attractive price



OkiLAN 510e Internal Print Server

For 10BASE2 and 10BASE-T Ethernet connectivity—fulfills hardware requirements for the majority of network users.

- Novell IPX/SPX with NDS technology
- TCP/IP protocol suite
- Hard to find NetBEUI, DEC® LAT® and DLC come standard
- Also supports Apple EtherTalk protocols





Technology-driven reliability. Industry-leading support.

Driving the performance of the OKIPAGE[®] 24DX Series is OKI[®] Digital LED Printing Technology.

Unlike lasers, which print through a complicated series of rotating mirrors and moving parts, the OKI printing process uses flashing pin-point beams of light that go straight to the image drum. All rock-solid state. It's simply a more sensible and efficient technology: Digital LED Printing. Simply Smarter Than Laser.™

Reliability to count on

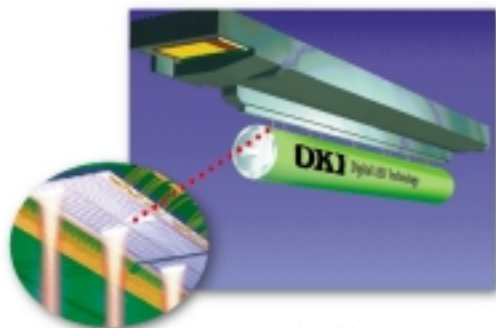
Because it's so reliable, OKI backs your OKIPAGE 24DX Series printer

with a 1-year on-site limited warranty on parts and labor, and **the industry's only 5-year LED printhead warranty.**



Should you need technical assistance, count on OKIcare™ service and support. Simply call our customer support hotline¹: **1-800-OKI-DATA (800-654-3282)** and speak to a live service representative, 7 days a week, 24 hours a day, 365 days a year.

For more information on the OKIPAGE 24DX Series or other OKI printers, visit our Web site at www.okidata.com. Or, for the OKI dealer nearest you, call **1-800-OKI-DATA**.



The rock-solid OKI Digital LED printhead utilizes a stationary array of pulsing light-emitting diodes (detail) to create high-resolution text and graphics.

To Contact Oki Data Americas, Inc.
In USA: 2000 Bishops Gate Blvd.
Mount Laurel, NJ 08054-4620
Tel: 800.OKI.DATA (800.654.3282)
Fax: 856.222.5320

In Canada: 2735 Matheson Blvd. East
Mississauga, Ontario L4W 4M8
Tel: 905.238.4250
Fax: 905.238.4421

In Latin America and Mexico:
2000 Bishops Gate Blvd.
Mount Laurel, NJ 08054-4620
Tel: 856.231.0002
Fax: 856.222.5071

Web Site: www.okidata.com



OKIPAGE[®] 24DX Series

DIGITAL LED PRINTERS

Technology

Print Speed: 24 pages per minute
Time to First Page: 6.7 seconds
Print Resolution: 600 dpi with 600 x 1200 graphics
Standard RAM Memory: 16 MB (OKIPAGE 24DX); 32 MB (OKIPAGE 24DXn)
Maximum RAM Memory: 80 MB
CPU: MIPS[®] R4700, 120 MHz, 32 bit
Compatibility: Windows[®] 2000, 98, 95, 3.1x, Windows NT[®] 4.0, MS-DOS[®] and most other operating systems
Emulations: PCL[®] 6; Adobe[®] PostScript[®] Level 2; IBM[®] ProPrinter[®] III XL and Epson[®] FX[™] (9-pin compatible)
Duty Cycle: Up to 65,000 pages per month maximum

Interfaces

Standard: IEEE-1284 compliant bi-directional parallel port; Internal Serial Interface RS232-C

Networking

Print Server: 10/100BASE-T Ethernet internal print server optional on OKIPAGE 24DX, standard in OKIPAGE 24DXn; OkiLAN[®] 6010e external print server and OkiLAN 510e internal print server, both optional

Paper Handling

Standard Paper Input: 630 sheets (530-sheet letter/legal/universal tray; 100-sheet manual feed) standard in OKIPAGE 24DX; 1160 standard in OKIPAGE 24DXn
Maximum Paper Input: 1790 sheets
Paper Types: Single sheets, Envelopes, Mailing label stock, Overhead transparencies
Paper Size: 3.4" x 5.5" minimum to 8.5" x 14" maximum
Standard Paper Output: 250 sheets, face down
Alternate Paper Output: 100 sheets, face up, straight paper path
Standard Paper Weight: 16–28 lb. main tray; 16–36 lb. multifeed; 16–28 lb. 2nd/3rd tray; duplex (2-sided) 16–28 lb.

Resident Fonts

Scalable Fonts: 35 PCL scalable fonts; 10 TrueType[®] scalable fonts; 37 PostScript fonts

Bitmap Fonts/Typefaces: Line printer, USPS POSTNET bar codes; OCR-A; OCR-B

Environmental (Printer only)

Size (WxDxH): OKIPAGE 24DX: 14.4" x 18.2" x 13.0" (36.6 cm x 46.2 cm x 33.1 cm)
Weight: OKIPAGE 24DX: 47 lbs. (21.3 kg)
Power: 120 VAC 50/60 Hz, 230 VAC 50/60 Hz

Warranty

Printer: 1-year limited on-site warranty on parts and labor; 5-year limited LED printhead warranty

Ordering Information (Part Number)

Printer:	Part Number
OKIPAGE 24DX, 120V (Multi-lingual)	62413603
OKIPAGE 24DX, 230V (Multi-lingual)	62413602
OKIPAGE 24DXn, 120V (Multi-lingual)	62413606
OKIPAGE 24DXn, 230V (Multi-lingual)	62413605

Supplies:

Toner Cartridge: Average Life—	
6,000 pages at 5% density	40468801
Image Drum: Average life—	
30,000 pages continuous printing	40468701
IEEE-1284 Bi-directional Parallel I/F Cable	70000803

Options:

OkiLAN 6100e+ Internal Print Server	70035501
Infrared Transceiver for OkiLAN 6100e+	70036501
OkiLAN [®] 6010e External Print Server	70034401
OkiLAN 510e Internal Print Server	70032801
2 nd and 3 rd Paper Tray Mechanism (530 Sheet)	40346401
Multi-Purpose Feeder	40352801
16 MB SIMM (Memory Expansion)	70035001
32 MB SIMM (Memory Expansion)	70035101
4 MB Flash SIMM	70035701
8 MB Flash SIMM	70035801

¹ Available in U.S.A. and Canada only.

All specifications subject to change without notice.

© 1999 Oki Data Americas, Inc. OKI, OkiLAN, OkiVIEW Reg. T.M., M.D., M.R., OKIPAGE Reg. T.M., OKIcare, "People to People Technology" and design T.M., Oki Electric Industry Co., Ltd.; 7-Day/24-Hour logo, On-Site Warranty logo, "Digital LED Printing, Simply Smarter Than Laser" T.M., Oki Data Americas, Inc.; Windows, Windows NT, MS-DOS Reg. T.M., Microsoft Corp.; Novell, NDS Reg. T.M., Novell Corp.; Banyan, VINES Reg. T.M., Banyan Systems Inc.; Apple, Macintosh, EtherTalk, TrueType Reg. T.M., Apple Computer Inc.; MIPS Reg. T.M., Silicon Graphics Inc.; PCL Reg. T.M., Hewlett-Packard Company; Adobe, PostScript Reg. T.M., Adobe Systems Inc.; IBM, ProPrinter Reg. T.M., International Business Machines Corp.; Epson Reg. T.M., Seiko Epson Corp.; FX T.M., Epson America, Inc.; DEC, LAT Reg. T.M., Digital Equipment Corp.; UNIX Reg. T.M., Unixsystems Laboratories, Inc.
Printed in the U.S.

4-digit Y2K compliant



MS 10618/0300

Free Manuals Download Website

<http://myh66.com>

<http://usermanuals.us>

<http://www.somanuals.com>

<http://www.4manuals.cc>

<http://www.manual-lib.com>

<http://www.404manual.com>

<http://www.luxmanual.com>

<http://aubethermostatmanual.com>

Golf course search by state

<http://golfingnear.com>

Email search by domain

<http://emailbydomain.com>

Auto manuals search

<http://auto.somanuals.com>

TV manuals search

<http://tv.somanuals.com>