

Distributed Printing from OKI®

Digital Color Signage Solution



Send print files on demand for immediate printing



Highlights:

Complimentary OKI® software enables low-cost setup for distributed file system utilizing OKI printers¹

Print on demand – saves time and money by getting new signage into stores faster (no need for preprinted forms requiring content)

Maintain corporate control of messaging and content while easily distributing signage in real time at the store level over the company intranet
Utilize existing MARCOM inside corporate firewall

Send files directly to OKI printers – no PCs are necessary at remote locations

Extremely easy to use – select the printer to receive and the file to send, then just hit “GO”

Change formats and content on the fly – no limits on creativity; introduce new products and programs the same day

Makes use of Secure Print and other printer functionality; prints only when ID code is entered

Embedded printer settings in file ensure consistency across multi-store base

¹ Requires internal hard disk drive; optional on some models.

² Published performance results based on laboratory testing. Individual results may vary.

Easily distribute corporate-created signage to regional or multi-store locations for fast, economical in-store printing.

If you have an infrastructure to create signage already in place but wind up outsourcing the jobs to a commercial printer and shipping piles of signs to your many store locations, OKI® has a real cost-saving solution for you.

Create your signs as you usually do, then use Distributed Printing from OKI to send the print files over your corporate intranet (using FTP technology) directly to OKI printers in your local stores, where your managers can print exactly the number of signs they need.

No PCs are required to receive files for the store printers. No shipping charges—nor damage—are incurred. And there's no wasted material as a result of stores getting too many signs or by not receiving dated material on time.

Color accuracy ensures consistency. When a print file (.pm) is sent from corporate headquarters to remote OKI printers, the printer settings go along, embedded in the file. You get consistent signage and promotional materials—sheet to sheet and store to store.

You also get them fast: OKI Digital Color printers deliver up to 30 pages per minute in brilliant color, and up to 37 ppm in clear, sharp black & white².

Change material on the fly. Distributed Printing from OKI enables you to make revisions and updates to in-store signage in real time. They can be sent as quickly as the electronic file is completed—and on display the same day!

And you can tailor your signage for individual stores as well as groups of locations: simply target specific OKI printers for your files.

An added benefit: secure printing. When a print file arrives at your store printers via Distributed Printing from OKI, it can only be accessed by a code punched into the keypad on the printers' operator panels. Management retains complete control of the printing process.

In addition to preventing unauthorized use of the OKI printer, this secure printing feature also allows you to send sensitive documents to a single location or group of stores.

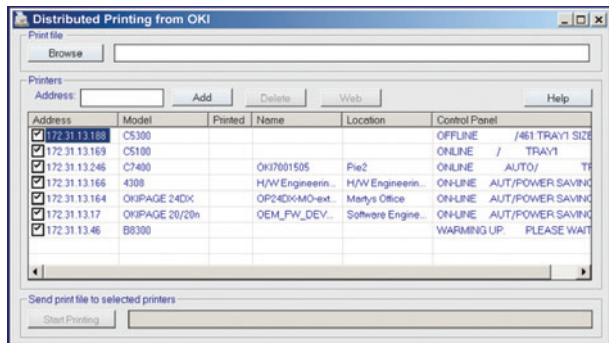
OKI®
COMMAND
PERFORMANCE™

Distributed Printing from OKI®

Digital Color Signage Solution

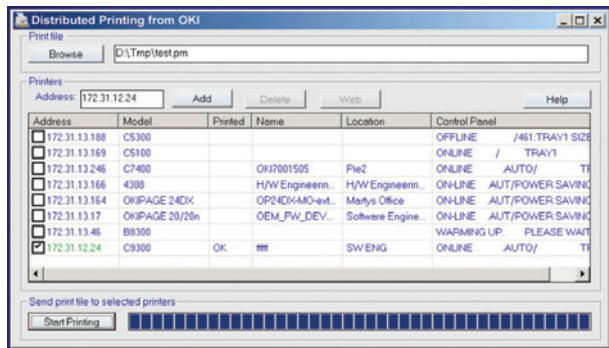


Sending files by Distributed Printing from OKI is easy as "Find" and "CLICK!"



Locate configured printers through Distributed Printing from OKI software:

Send to one or to all. This complimentary device-management application enables the discovery of all OKI printers throughout your enterprise.



Send a print file through your corporate intranet:

Distribute signage to remote store locations with a click of your mouse. It's really that simple. Files arrive on the internal hard drive of your OKI printer, where they'll remain stored until a password is entered on the printer's operator panel keypad.

Distributed Printing from OKI Specifications

Description

- Solution for distributing corporate-created signage to regional or multi-store locations for fast and economical in-store printing; enables use of existing MARCOM creative resources (internal or outsourced)
- Send files directly to OKI printer: no PC necessary at remote locations; easy and quick distribution of files over a company intranet
- Professional-quality color signage on demand; scalable for business needs; cost-effective, in-store alternative

OKI Printers Supported

- All OKI C9300/C9500 Series, C7300/C7500 Series and C5000 Series Digital Color printers; OKI B4000 and B6000 Series, and B8300n Digital Mono printers
- Requires hard disk drive (optional on some models)

Operating System

- Base station running Windows® 98/ME/2000, 2003, or XP Professional; 5 MB free disk space; 128 MB RAM (recommended)
- Remote printers must be connected via LAN or WAN network; 10/100 Ethernet NIC required for all remote printers

Web Access

- Internet Explorer® 4.0 or higher, Netscape® Communicator® 4.0 or higher

Ordering Information

- Complimentary software accompanying sale of OKI printer
- Further information at www.okidata.com

For more information on OKI Printing Solutions and supplies, including OKIcare® Extended Service Programs¹:
1-800-OKI-DATA (800-654-3282).

¹ Available in the U.S. and Canada only.

Specifications are subject to change without notice.

© 2004 Oki Data Americas, Inc. OKI Reg. T.M., Oki Electric Industry Co., Ltd. Single Pass Color T.M., Oki Data Corp., Command Performance T.M., Oki Data Americas, Inc., Internet Explorer, Windows Reg. T.M., Microsoft Corp. Netscape Reg. T.M., Netscape Inc.

OKI®

*Oki, Network Solutions
for a Global Society*

To contact Oki Data Americas, Inc.

In USA: 2000 Bishops Gate Blvd.
Mount Laurel, NJ 08054-4620
Tel: 800.OKI.DATA (800.654.3282)
Fax: 856.222.5320

In Canada: 2735 Matheson Blvd. East

Mississauga, Ontario L4W 4M8
Tel: 905.238.4250
Fax: 905.238.4421

In Latin America and Mexico:

2000 Bishops Gate Blvd.
Mount Laurel, NJ 08054-4620
Tel: 856.231.0002
Fax: 856.222.5071



Free Manuals Download Website

<http://myh66.com>

<http://usermanuals.us>

<http://www.somanuals.com>

<http://www.4manuals.cc>

<http://www.manual-lib.com>

<http://www.404manual.com>

<http://www.luxmanual.com>

<http://aubethermostatmanual.com>

Golf course search by state

<http://golfingnear.com>

Email search by domain

<http://emailbydomain.com>

Auto manuals search

<http://auto.somanuals.com>

TV manuals search

<http://tv.somanuals.com>