



Bluetooth Access Point with Broadband Router

Quick Start Guide

FCC Interference Statement

This equipment has been tested and found to comply with the limits for a Class B digital device pursuant to Part 15 of the FCC Rules. These limits are designed to provide reasonable protection against radio interference in a commercial environment. This equipment can generate, use and radiate radio frequency energy and, if not installed and used in accordance with the instructions in this manual, may cause harmful interference to radio communications. Operation of this equipment in a residential area is likely to cause interference, in which case the user, at his own expense, will be required to take whatever measures are necessary to correct the interference.

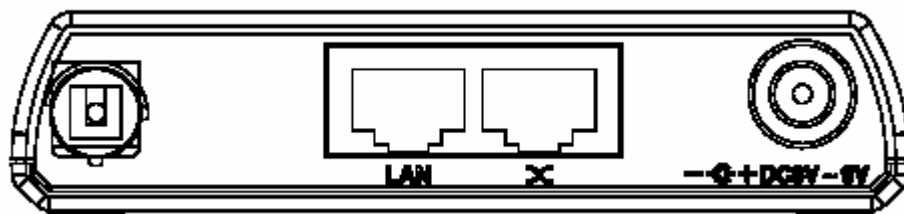
CE Declaration of Conformity

This equipment complies with the requirements relating to electromagnetic compatibility, EN 55022/A1 Class B, and EN 50082-1. This meets the essential protection requirements of the European Council Directive 89/336/EEC on the approximation of the laws of the member states relation to electromagnetic compatibility.

This Quick Start Guide can help you setup up your PAN router quickly, please following steps for Bluetooth PAN router setup.

1. Plug-in your ethernet cable in to this router, then plug in the power jack.

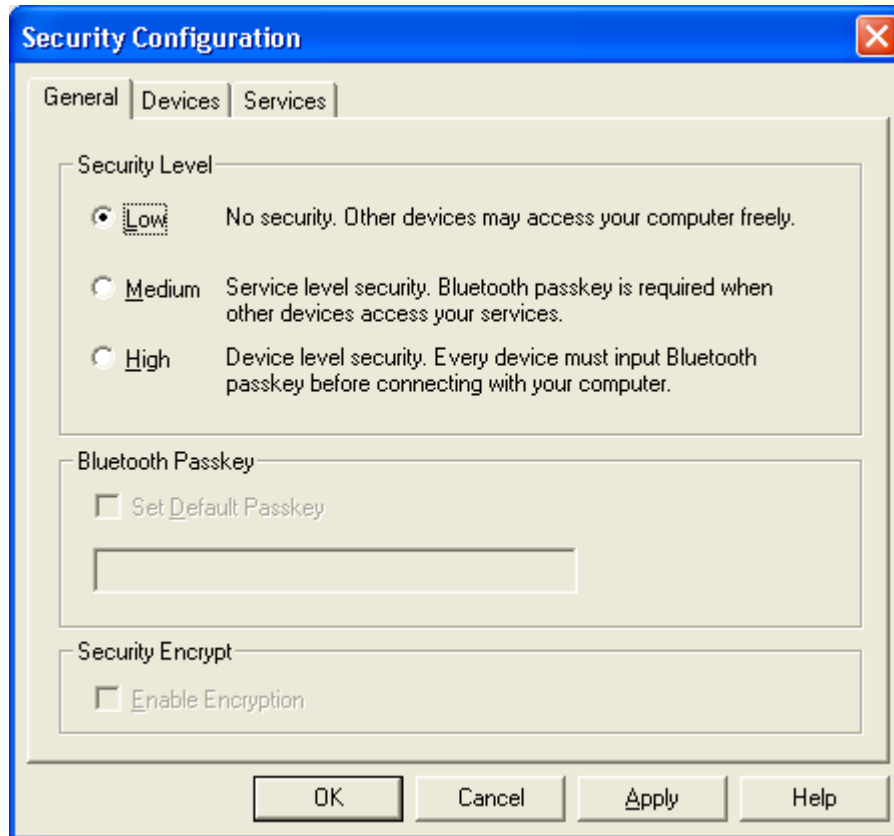
Note: The included power adapter is DC 6V/1A, Using wrong type of power adapter may cause this product damage.





BT202BIL01 Guideline

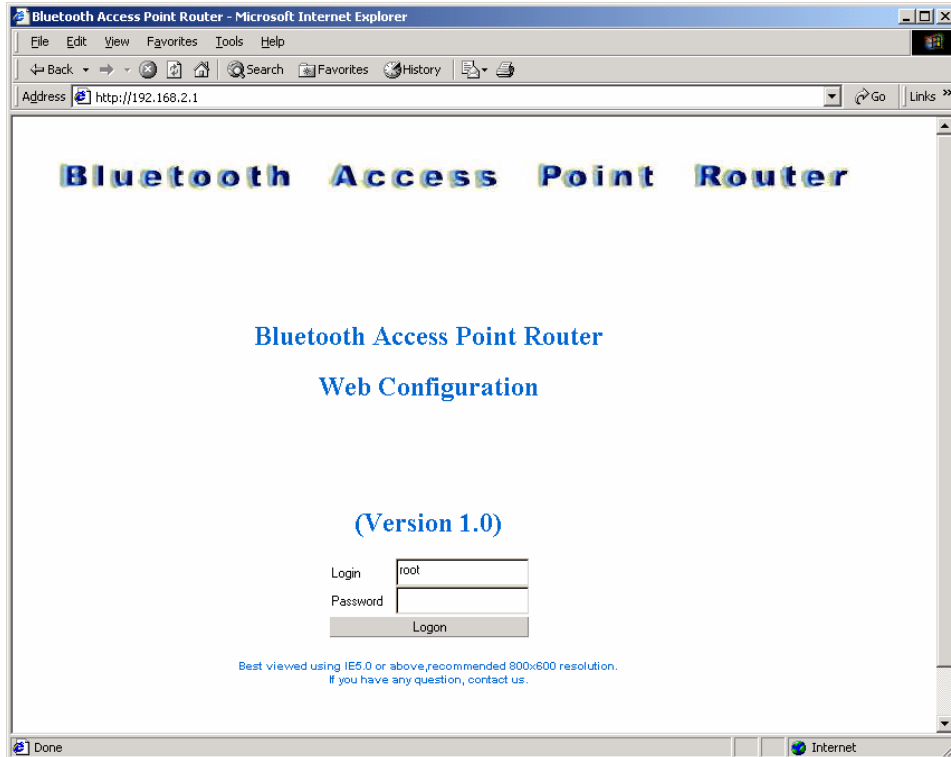
- Using your Bluetooth PC or devices to search this router and connect to this router, if your system ask for the pair key of this router please disable your Bluetooth software security setting or select low security, for more information about Bluetooth software please references to your Bluetooth adapter software user's manual or this router user guide.



- Check your browser setting first make sure the proxy is disable, then open your web browser, and enter 192.168.2.1 into the web browser's Address bar, then, press the Enter key, and you can access the login page in this router.



BT202BIL01 Guideline



4. At login page leave the Password field empty with “root” in the User field, and click the Logon button (you can configure the user/password later in the “Change User/Pwd Page”).

Note: For Windows XP users, it is necessary to download JRE from Sun Microsystems (<http://www.sun.com>) or run windows update, or you can install from our CD.

5. After login, you can configuring this router and for more details information please references to this router user guide.
6. So far as we know this access point can support

IVT BlueSoleil 1.08 or above.

IVT BlueSoleil for WinCE1.0 or above.

Widcomm BTW1.3.2.7 or above.

Widcomm BTWCE1.3.1.46 or above.

Free Manuals Download Website

<http://myh66.com>

<http://usermanuals.us>

<http://www.somanuals.com>

<http://www.4manuals.cc>

<http://www.manual-lib.com>

<http://www.404manual.com>

<http://www.luxmanual.com>

<http://aubethermostatmanual.com>

Golf course search by state

<http://golfingnear.com>

Email search by domain

<http://emailbydomain.com>

Auto manuals search

<http://auto.somanuals.com>

TV manuals search

<http://tv.somanuals.com>