

CAMEDIA

USB Reader/Writer

MAUSB-10

REFERENCE MANUAL

OLYMPUS[®]

Introduction

Thank you for purchasing our product.

This product is exclusively for reading and writing data to an xD-Picture Card/SmartMedia. You can transfer large amounts of data to and from the card quickly and easily using a computer equipped with a USB port (IBM PC/AT compatibles and Macintosh).

Before using this product, read this manual and the separate "Precautions" document carefully.

This manual assumes that the user is familiar with computer operation and operating systems. For information about computers, optional devices, operating software, and so on, refer to the manuals supplied with the respective products.

Main features

- **Supports USB (Universal Serial Bus) port.** You can transfer data to your computer easily at high-speed.
- **Supports Hot Plug for USB connection.** You can connect/disconnect the MAUSB-10 without turning off the computer.
- **Power supplied by the connected computer through its USB port.** A separate power supply such as an AC adapter is not required.
- **Compatible with both xD-Picture Card and SmartMedia (with ID).** You can also transfer data from a digital camera compatible with xD-Picture Card.
- **Simultaneously reads xD-Picture Card and SmartMedia.** You can quickly check your data.
- **Easy card inserting/removing.** Inserting and removing cards is just as easy and convenient as with floppy disks or magneto-optical disks (MO).

For customers in the USA

Declaration of Conformity

Model Number : MAUSB-10
Trade Name : OLYMPUS
Responsible Party : Olympus America Inc.
Address : 2 Corporate Center Drive, Melville, New York 11747-3157 U.S.A.
Telephone Number : 631-844-5000

Tested To Comply With FCC Standards
FOR HOME OR OFFICE USE

This device complies with Part 15 of the FCC rules. Operation is subject to the following two conditions:

- (1) This device may not cause harmful interference.
- (2) This device must accept any interference received, including interference that may cause undesired operation.

For customers in Canada

This Class B digital apparatus meets all requirements of the Canadian Interference-Causing Equipment Regulations.

For customers in Europe



"CE" mark indicates that this product complies with the European requirements for safety, health, environment and customer protection.

Trademarks

- IBM is a registered trademark of International Business Machines Corporation.
- Microsoft and Windows are registered trademarks of Microsoft Corporation.
- Macintosh is a registered trademark of Apple Computer, Inc.
- SmartMedia is a trademark of Toshiba Corporation.
- All other company and product names are registered trademarks and/or trademarks of their respective owners.

Contents

Introduction	2
Contents	3
What's included	4
Names of parts	4
Before getting started	5

Windows 98/98 SE/Me

How to install	1. Turn on the computer	7
	2. Install the device driver	7
Operating the MAUSB-10	1. Connecting to the computer	10
	2. Inserting a card	12
	3. Removing a card	13
	4. Copying files from a card	14
	5. Formatting a card	15
	6. Disconnecting the MAUSB-10	15
How to uninstall the device driver		16

Windows 2000/XP

How to install	1. Turn on the computer	18
	2. Install the device driver	18
Operating the MAUSB-10	1. Connecting to the computer	21
	2. Inserting a card	25
	3. Removing a card	26
	4. Copying files from a card	27
	5. Formatting a card	28
	6. Disconnecting the MAUSB-10	29
How to uninstall the device driver		30

Macintosh OS 8.6~9.2

How to install	1. Turn on the computer	32
	2. Load the CD-ROM	32
	3. Install the device driver	33
Operating the MAUSB-10	1. Connecting to the computer	35
	2. Inserting a card	36
	3. Removing a card	37
	4. Copying files from a card	38
	5. Formatting a card	38
	6. Disconnecting the MAUSB-10	38
How to uninstall the device driver		39

Macintosh OS X

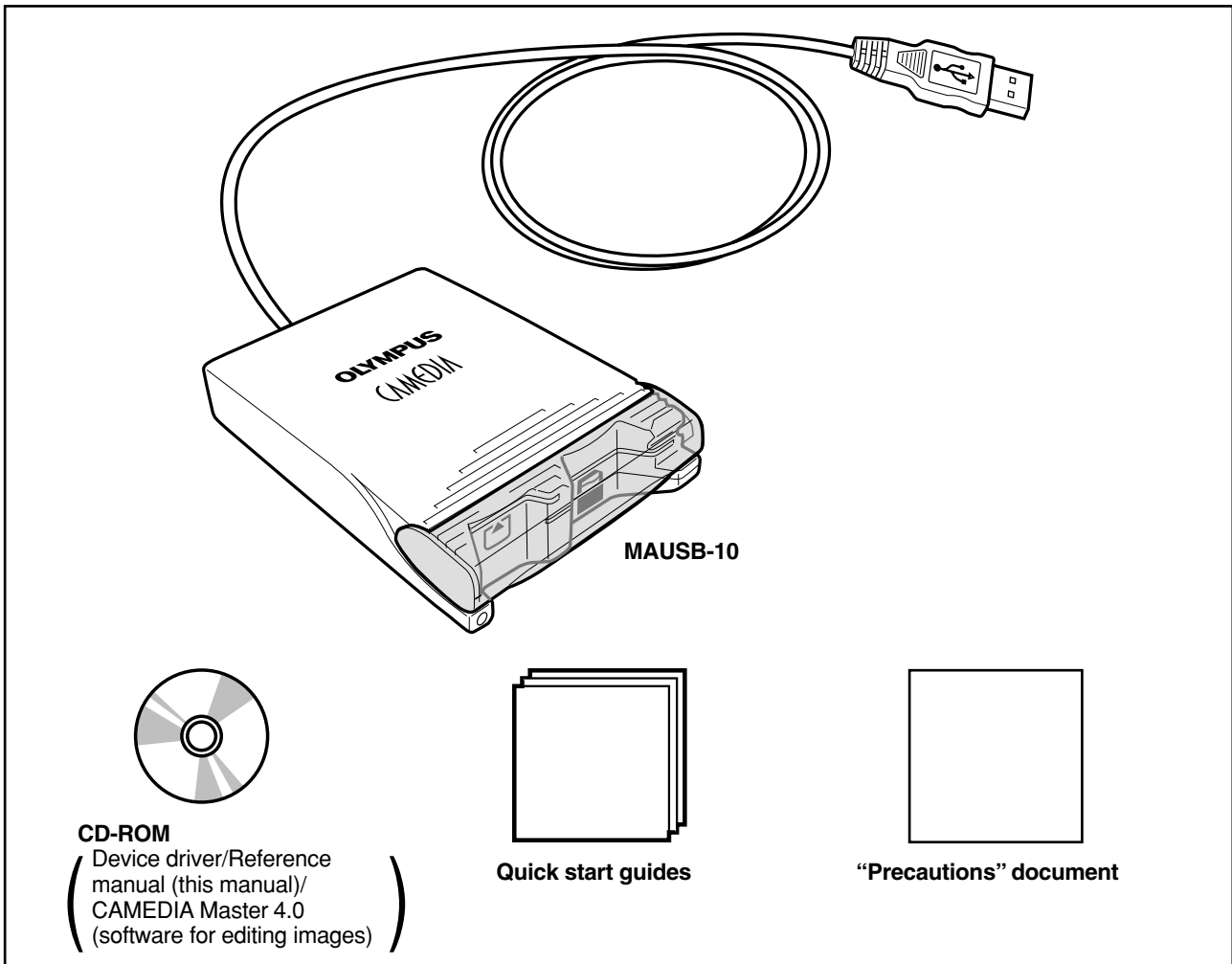
How to install	1. Turn on the computer	40
	2. Load the CD-ROM	40
	3. Install the device driver	41
Operating the MAUSB-10	1. Connecting to the computer	44
	2. Inserting a card	45
	3. Removing a card	46
	4. Copying files from a card	47
	5. Formatting a card	47
	6. Disconnecting the MAUSB-10	47

Troubleshooting	48
Specifications	50
Glossary of terms	51

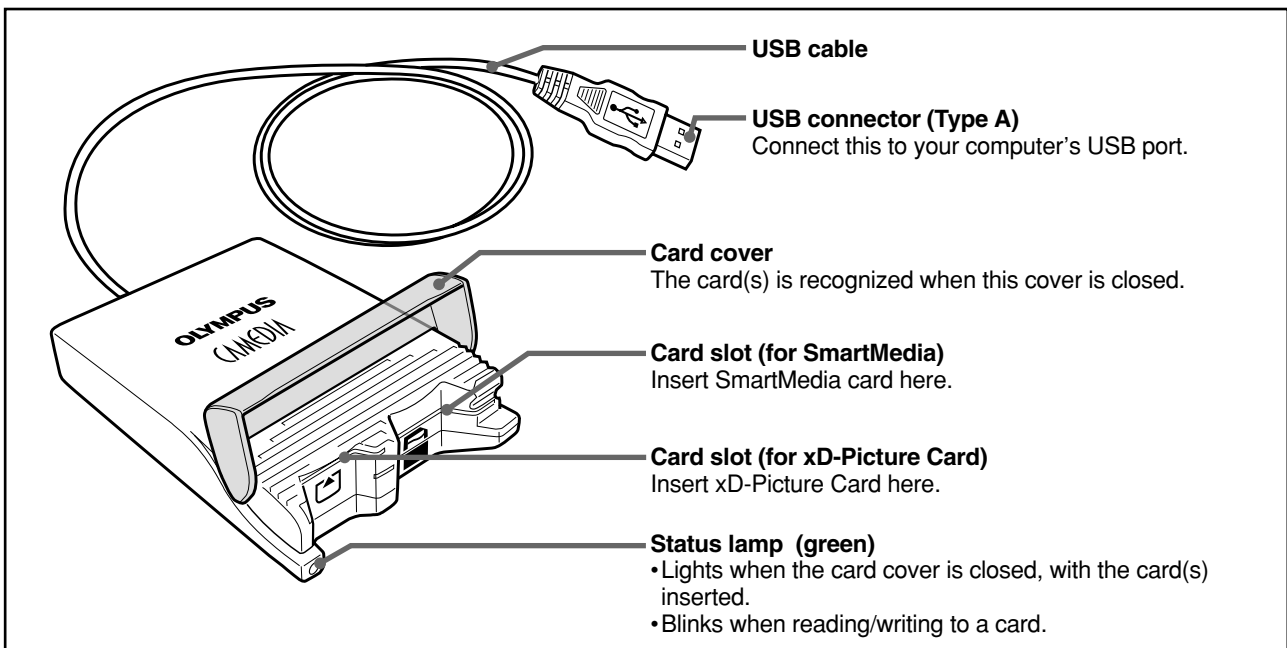
What's included

Make sure all the following items are included.

If any items are missing, inform the shop from where you purchased this product right away.



Names of parts



Before getting started

System requirements

Your computer must conform to the following minimum standards in order to use it with the MAUSB-10.

● Compatible operating systems

IBM PC/AT compatible:

pre-installed Windows 98/98 SE/Me/2000 Professional (referred to as Windows 2000 in this manual)/XP

Power Macintosh G3/G4, Power Book G3/G4, iMac/iBook series:

pre-installed Mac OS 8.6 - 9.2/X (v10.1.2 - v10.2.1)

- USB interface (USB Ver. 1.1 compatible)
- CD-ROM drive

Supported cards

SmartMedia

4MB/8MB/16MB/32MB/64MB/128MB (3.3V)

xD-Picture Card

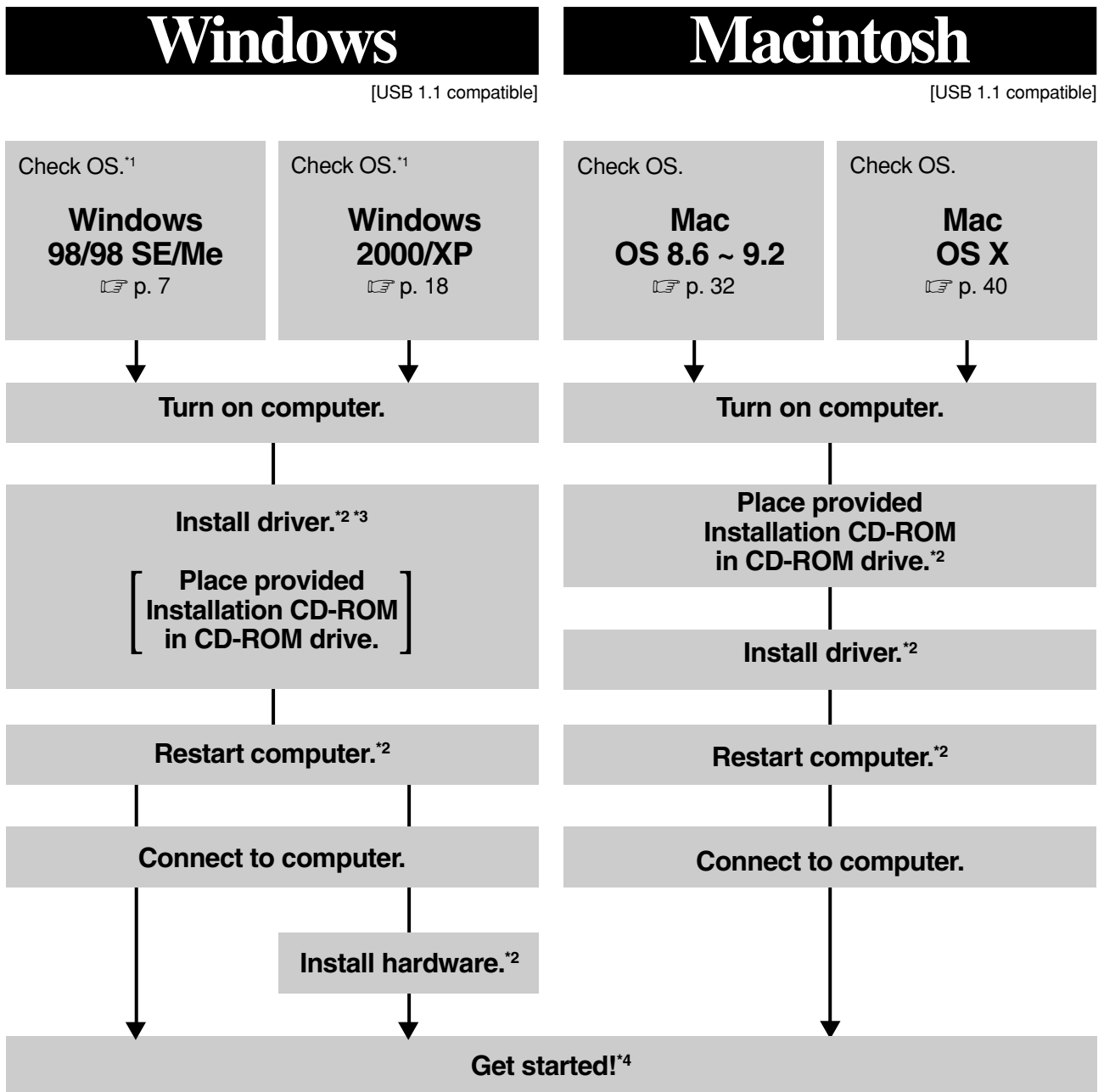
16MB/32MB/64MB/128MB (3.3V)

Precautions

- The MAUSB-10 may not be compatible with your computer hardware, software, or drivers.
- It is not possible to connect two or more MAUSB-10s to a single PC at the same time.
- If you connect the MAUSB-10 to a PC via a USB hub, the MAUSB-10 may not function properly. In this case, directly connect the MAUSB-10 to the computer.
- Versions of Windows 98/Me upgraded from Windows 3.1/95, or Windows 2000 upgraded from Windows 95/NT 4.0/NT 3.51 may not work properly. In this case, you may need to reinstall your OS.
- If you are using an iMac (M6709J/A, M6709J/B), you must install iMac Update 1.1 on your computer (not required for Mac OS 8.6 or later). For more information, visit Apple's Web site at <http://www.apple.com/>.
- Opening the card cover, removing a card, or disconnecting the MAUSB-10 while the status lamp is blinking may destroy data on the card or damage the card.
- If a card is formatted by a PC connected to the MAUSB-10, the card may not function properly in your digital appliance. In this case, format the card using your digital appliance again. Refer to your digital appliance's manual for more information.
- Some older digital cameras do not support 64MB and larger SmartMedia cards. Do not use a 64MB SmartMedia card or larger in a digital camera designed to support the previous SmartMedia standard (ver. 1.0). Doing so and then inserting the card into the MAUSB-10 could destroy the data on the card. Check with the camera's specifications or manufacturer for more details.

Getting started

The installation procedure varies depending on the operating system you are using on your computer. Follow the correct procedure for your operating system.



*1 : Windows 95/3.1/NT are not compatible.

*2 : You only need to perform this procedure before using the MAUSB-10 for the first time.

*3 : Insert the CD-ROM. The installation screen appears automatically.

*4 : Refer to "Operating the MAUSB-10" in each OS chapter for more details.

Windows 98/98 SE/Me

How to install

Also refer to your computer's user manual and the manuals for any optional devices you are using.

1 Turn on the computer

<98/98 SE/Me ♦ Install>

Turn on your computer's power (and connected devices) to start Windows.

2 Install the device driver

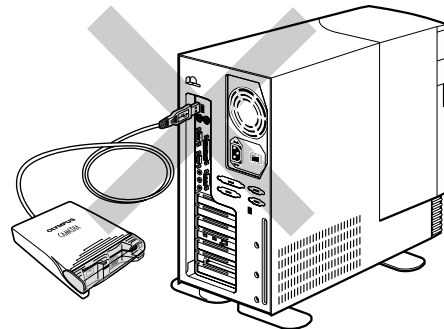
<98/98 SE/Me ♦ Install>

When using the MAUSB-10 for the first time, you must first install the device driver included on the provided CD-ROM.

[Note]

- Do NOT connect the MAUSB-10 to the computer until installation of the device driver is completed.

⚠ Do not connect to the computer before installation.

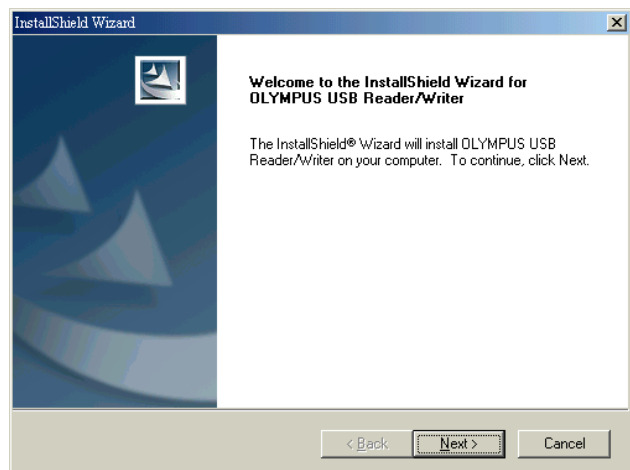


Before installation, make sure that the computer is turned on, then follow the steps below to install the driver on your computer.

(* Note that the windows shown below may look different on your computer, depending on how your operating system is configured.)

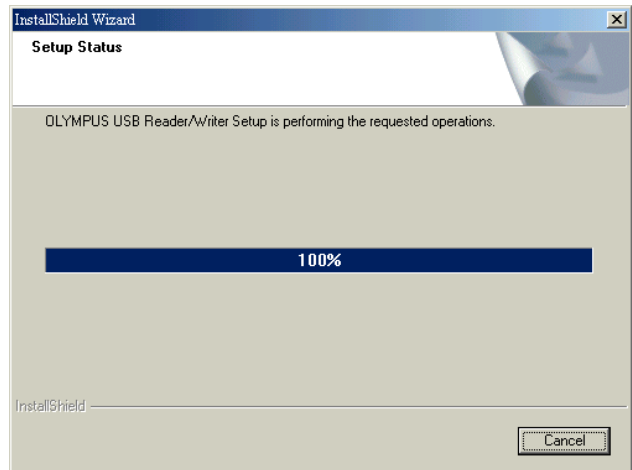
1. Turn on the computer, then place the provided CD-ROM into the computer's CD-ROM drive.
2. When the CD-ROM is recognized, the InstallShield setup window is displayed for a few seconds. Then, the installation window appears automatically.
3. Click the "Next" button.

- * If the window at right does not appear, refer to "If the installation window does not appear when the CD-ROM is loaded" (p. 9).
- * If you want to cancel the installation, click "Cancel".

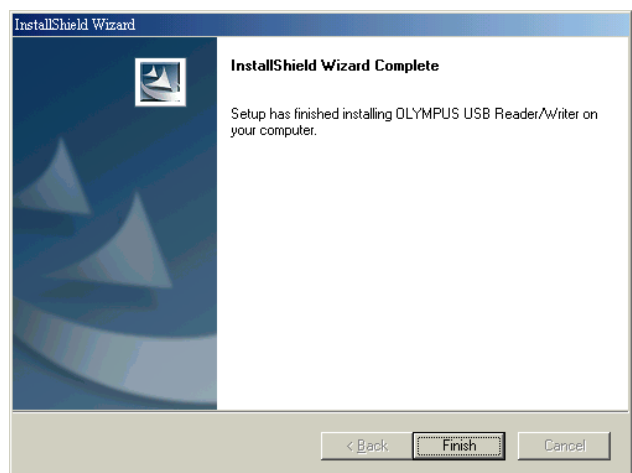


4. During installation, the window at right appears.

* The installation time may vary, depending on your computer.

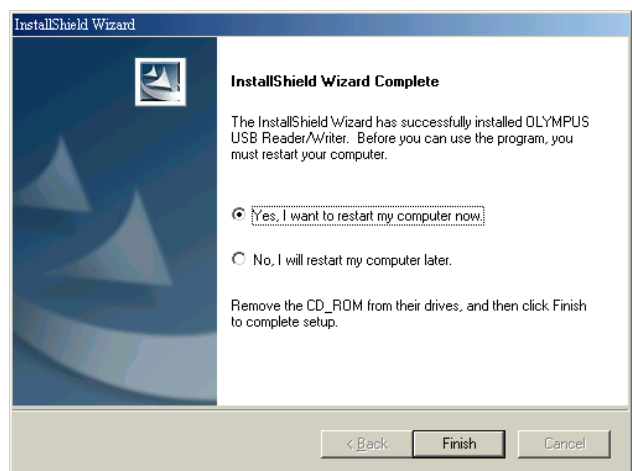


5. When the driver installation is complete, the window at right appears. Click the "Finish" button.



6. The window at right appears. Select "Yes, I want to restart my computer now." if you are ready, then click "Finish".

* The computer restarts.



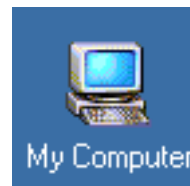
The device driver is now installed.

Once the driver has been installed, the MAUSB-10 will be recognized automatically whenever it is plugged into the computer. (Remove the CD-ROM from the CD-ROM drive and store it in a safe place.)

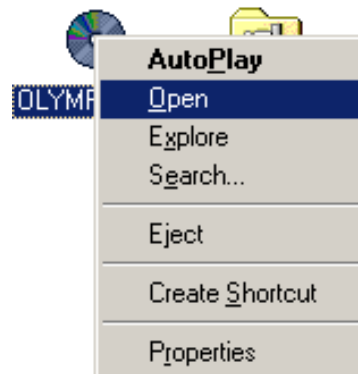
If the installation window does not appear when the CD-ROM is loaded

Follow the steps below to specify the file and start installing.

1. **Double-click** "My Computer".



2. **Right-click** "OLYMPUS". Select "Open" from the pop-up menu.



3. **Double-click** "Mausb_10".



4. **Double-click** "SETUP".

* The "OLYMPUS USB Reader/Writer InstallShield Wizard" window appears. Start installing by following "Install the device driver" (p. 7).



When the "Add New Hardware Wizard" window appears

If you connect the MAUSB-10 to the computer before installing the device driver, the "Add New Hardware Wizard" window appears. In this case, follow the steps below.

1. **Disconnect** the MAUSB-10 from the computer (p. 15).
2. Click the "Cancel" button.
3. Place the CD-ROM into the CD-ROM drive. Follow the instructions in "Install the device driver" (p. 7).



Operating the MAUSB-10

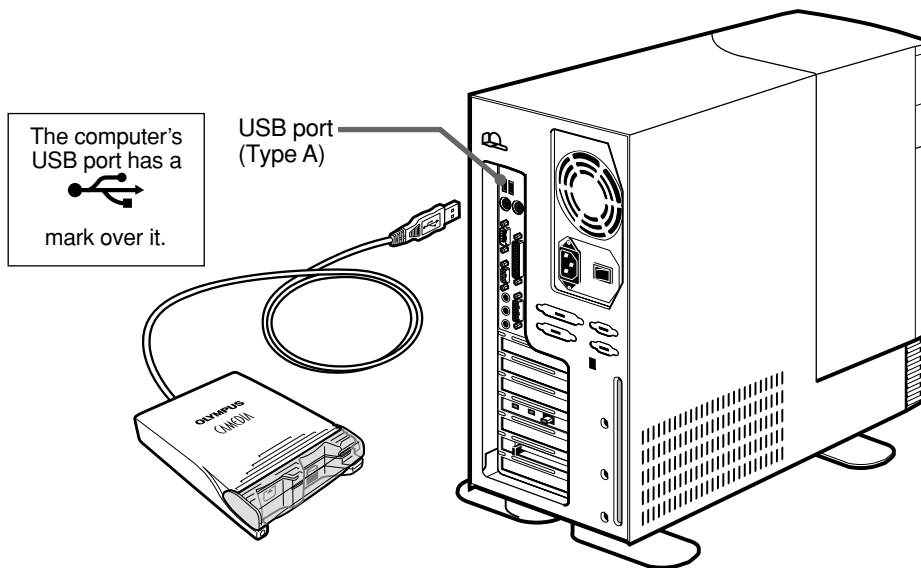
The operating procedures for the MAUSB-10 under Windows are described below.

1 Connecting to the computer <98/98 SE/Me ♦ Operation>

After installing the device driver, connect the MAUSB-10's connector to the USB port on your computer. (You can plug in the USB connector while the computer is in use.)

[Notes]

- **Be sure to connect the MAUSB-10 to your computer AFTER installing the device driver.**
- Make sure the connector is fully inserted.
- When inserting the connector, make sure it is oriented correctly (refer to the pictures below). Inserting the connector incorrectly may damage the connector and/or the computer's USB port.



When the MAUSB-10 is connected to your computer, it is recognized as a “Removable Disk”.

You can see two “Removable Disk” icons by opening “My Computer” from the desktop.

[Drive letters]

The drive letters for the two “Removable Disk” icons appear in alphabetical order, with the xD-Picture Card first and the SmartMedia second.

e.g. When the Removable Disks are recognized as (F:) and (G:) by a computer

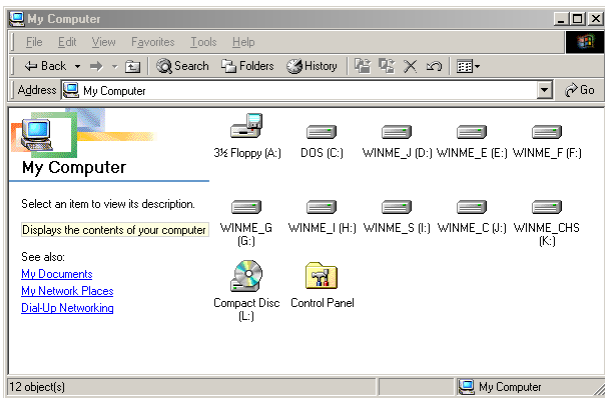
(F:) → xD-Picture Card

(G:) → SmartMedia

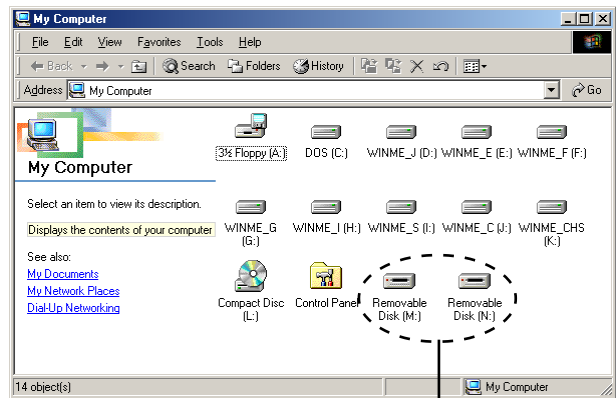
[Note]

When labeling the “Removable Disk” icons, the computer may skip a drive letter if other devices are connected to the computer [e.g. (D:) xD-Picture Card, (E:) other device, (F:) SmartMedia]. Check the drive letters for the two “Removable Disk” icons after connecting this product.

Before connecting



After connecting



MAUSB-10

* In this example, the Removable Disks are recognized as the M and N drive. The drive letters (e.g. “M:”, “N:”, etc.) used by your computer may differ depending on your computer and/or connected optional devices.

2 Inserting a card

<98/98 SE/Me ♦ Operation>

1. Make sure the MAUSB-10 is connected to the computer and insert the card into the corresponding card slot.

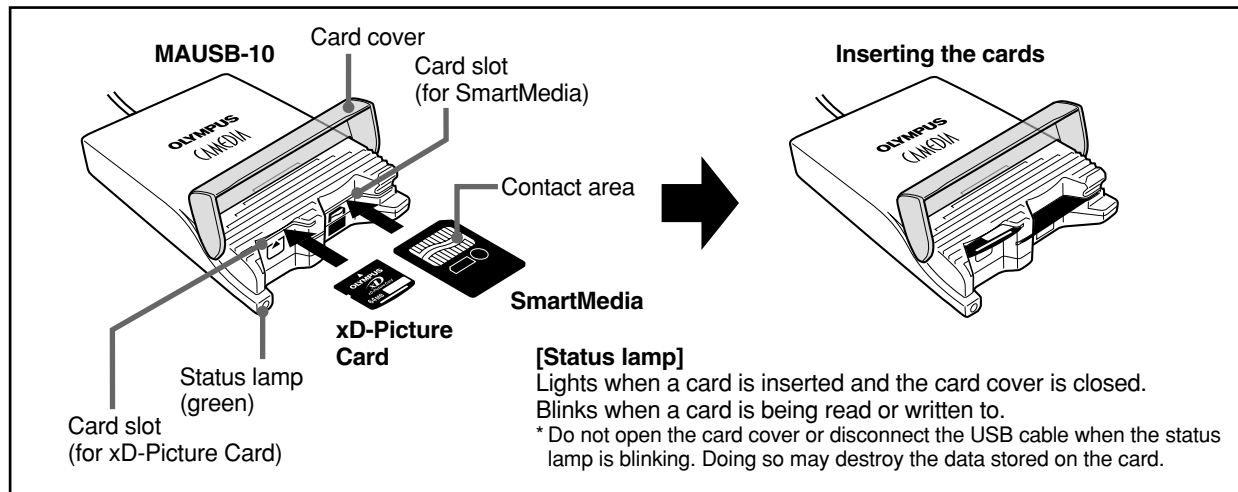
[xD-Picture Card]

Make sure the card is level and that the gold-colored contact area is facing down. Insert the card all the way into the left-hand slot.

[SmartMedia]

Make sure the card is level and that the gold-colored contact area is facing up. Insert the card all the way into the right-hand slot.

2. Close the card cover.



Notes

- Make sure that the card is facing the right way.
- Do NOT insert the card at an angle. Forcing a card in diagonally may damage the card and/or the MAUSB-10.
- MAUSB-10 will not be able to recognize the card(s) if the card cover is open.
- The status lamp blinks every two seconds if the card is not recognized correctly. If this happens, remove the card(s) from the MAUSB-10, wipe the contact area with a dry cloth, and insert the card(s) again. If the problem persists, the card may be damaged.

Close all software programs that are using data on the card (e.g. Explorer, graphics applications), then follow the steps below.

Attention!

If you do not follow the steps below, the data on the card(s) may be damaged.

1. **Double-click** "My Computer" on the desktop.

2. **[To remove a card]: Right-click** the corresponding "Removable Disk" icon, then click "Eject" in the pop-up menu.

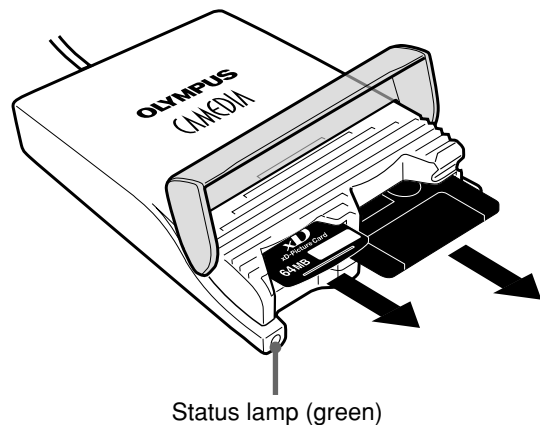
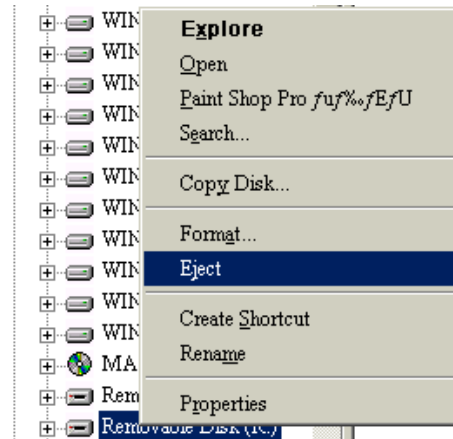
[To remove one card/both cards, with two cards inserted]: Right-click the both "Removable Disk" icons, then click "Eject" in each pop-up menu.

* You must **right-click** BOTH Removable Disk icons, even if you want to remove only one card.

* The status lamp goes off when this step is performed correctly.

* The card will not be ejected when "Eject" is clicked in this step.

3. Make sure that the status lamp is off, then open the card cover and pull the card(s) out of the card slot(s) as shown.



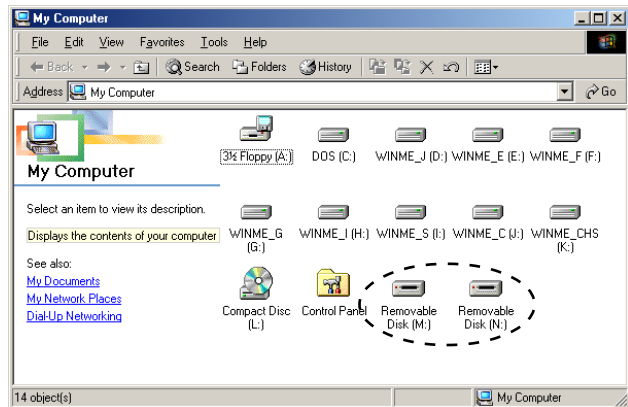
Status lamp (green)

Note

NEVER open the card cover, remove the card, or unplug the USB connector while the status lamp is blinking. Doing so may destroy the data on the card or the card itself, or cause the computer to malfunction.

1. Start up your computer.
2. **Double-click** "My Computer" from the desktop.
3. To view the contents of a card, **double-click** the corresponding "Removable Disk" icon.

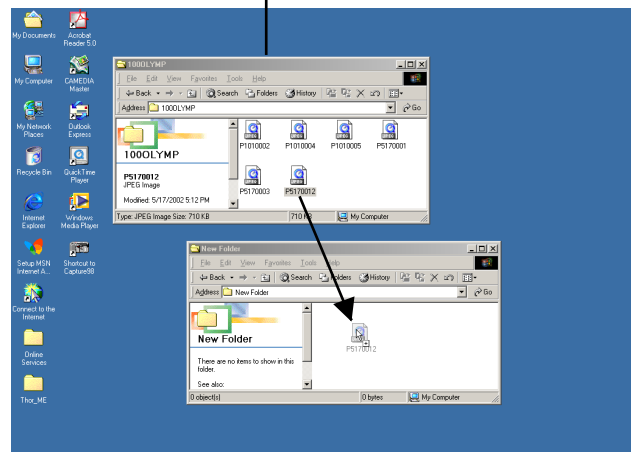
* For information about how to locate the files you want to copy, refer to the manual for the product used to record them.



* In this example, the Removable Disks are recognized as the M and N drive. The drive letters (e.g. "M:", "N:", etc.) used by your computer may differ depending on your computer and/or connected optional devices.

4. **Drag** the file icons you want to copy and **drop** them onto the destination folder.
- * The process is the same as copying files from a floppy disk.
- * It is also possible to move files to another folder, erase files, or write data from another folder. (Data cannot be written to or erased from a SmartMedia card which has a write-protect seal affixed to it.)

The window containing the files to be copied



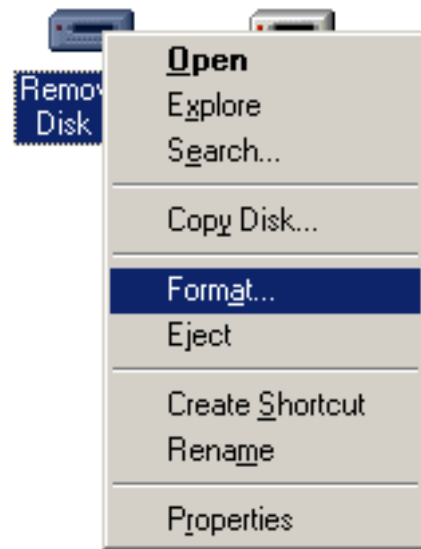
Drag & Drop

To perform a drag and drop, press and hold the left mouse button over the selected file(s), then move the mouse (drag) and release the button at the place where you want to copy (drop).

[Before formatting the card]

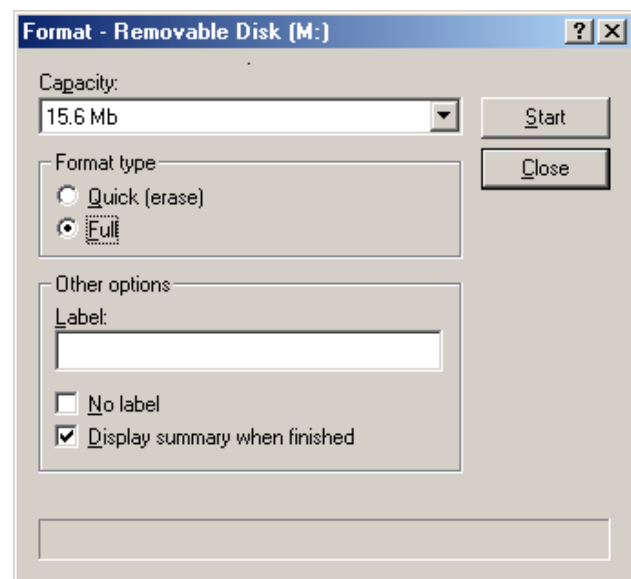
- **If a card is going to be used with a digital camera, be sure to format it with the camera you are using. Cards formatted by the computer using the MAUSB-10 may not be recognized by the digital camera.**
- Formatting a SmartMedia card is not possible when a write-protect seal is affixed to it. (It is not possible to format a SmartMedia card or write, move or erase data on a SmartMedia card which has a write-protect seal affixed to it. For more details, refer to the SmartMedia card's instruction manual.)
- Formatting erases all data in the card. All important data should be copied to a hard disk or floppy disk in advance.
- Double-clicking the "Removable Disk" icon will display the directory and the list of image files on the inserted card.

1. **Double-click** "My Computer", then **right-click** on the "Removable Disk" icon corresponding to the card you want to format. Select "Format" from the pop-up menu.



2. The dialog box at right appears. Select "Full" under "Format type", then click the "Start" button.

* After formatting is complete, the card is ready for use.



* Example shows a 16MB card

6 Disconnecting the MAUSB-10

Close all software programs that are using the card (e. g. Explorer, graphics applications), then follow the steps below.

1. Make sure that the status lamp is NOT on.
* If the status lamp is on, **right click** the Removable Disk icon(s), then click "Eject" in the pop-up menu (☞ p. 13).
2. Open the card cover and remove the card (☞ p.13).
3. Unplug the MAUSB-10 from the computer.

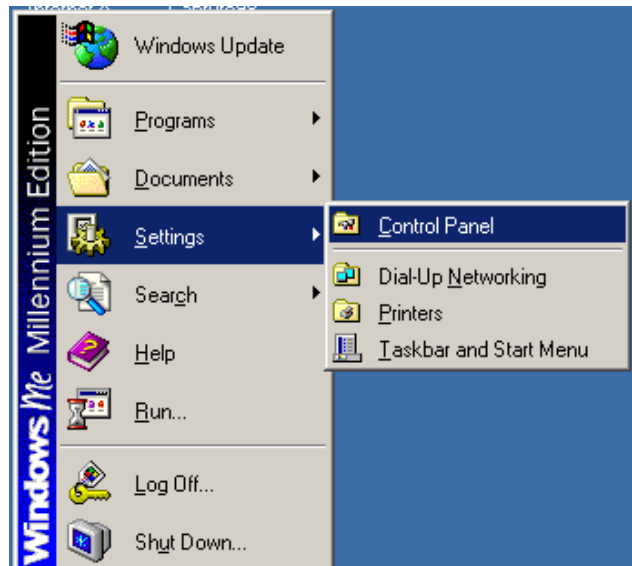
How to uninstall the device driver

<98/98 SE/Me>

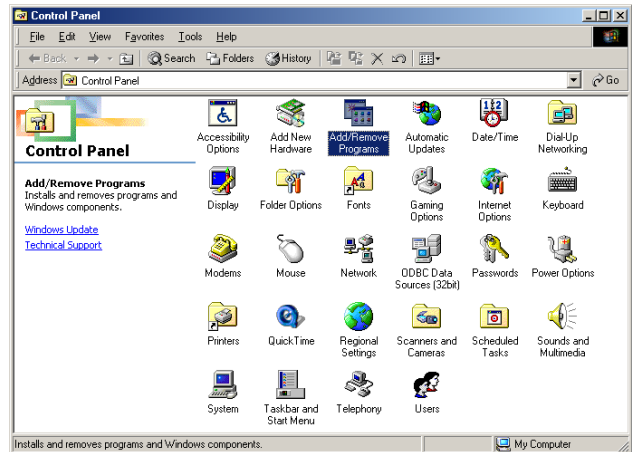
The device driver can be deleted if it is no longer needed. First make sure that the MAUSB-10 is disconnected from the computer's USB port, then follow the steps below.

* On-screen displays or messages may vary depending on the version of Windows you are using.

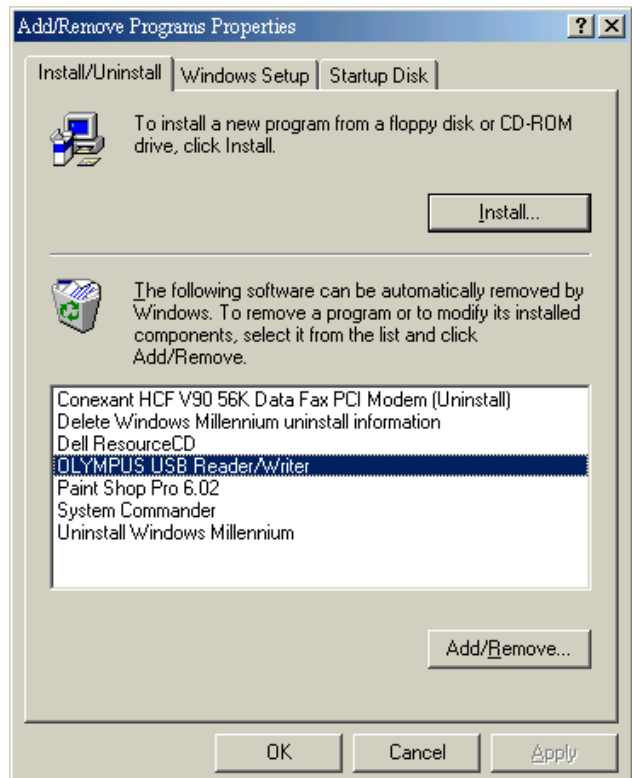
1. Click the "Start" button, then select "Settings" — "Control Panel".



2. Double-click "Add/Remove Programs".

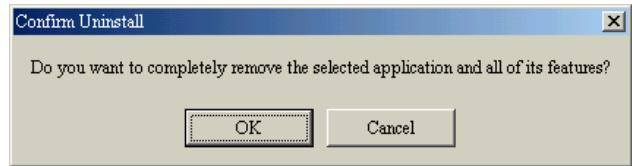


3. Select "OLYMPUS USB Reader/Writer", then click the "Add/Remove" button.

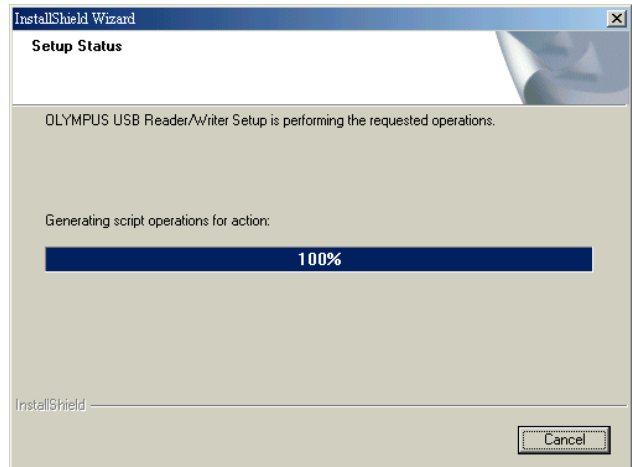


How to uninstall the device driver (Cont.) <98/98 SE/Me>

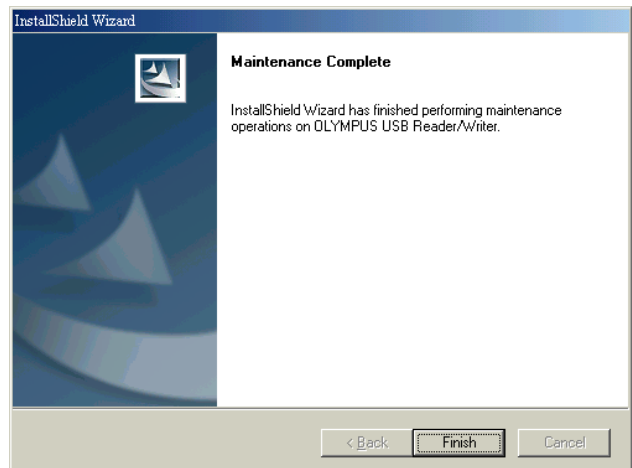
4. A confirmation window appears. Click “OK”.



5. The “InstallShield Wizard” window appears.

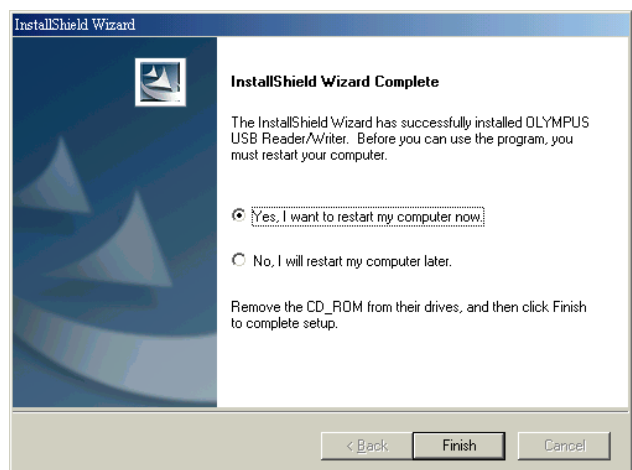


6. The window at right appears. Click the “Finish” button.



7. The window at right appears. Select “Yes, I want to restart my computer now.” if you are ready, then click “Finish”.

* The computer restarts.



The device driver is no longer installed.

Windows 2000/XP

How to install

Also refer to your computer's user manual and the manuals for any optional devices you are using.

1 Turn on the computer

<2000/XP ♦ Install>

Turn on your computer's power (and connected devices) to start Windows 2000/XP.

To install the device driver, log on with the user name "Administrator", or use a user name with administrator privileges.

2 Install the device driver

<2000/XP ♦ Install>

When using the MAUSB-10 for the first time, you must first install the device driver included on the provided CD-ROM.

[Note]

- Do NOT connect the MAUSB-10 to the computer until installation of the device driver is completed.

Before installation, make sure that the computer is turned on, then follow the steps below to install the driver on your computer.

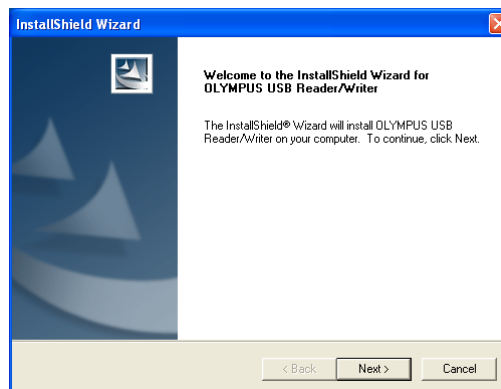
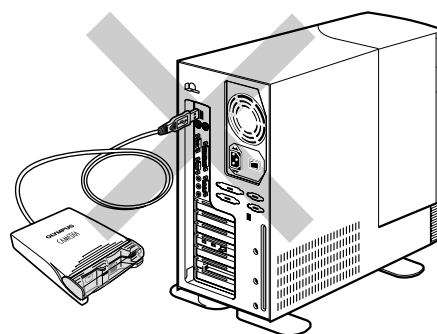
(* Note that the windows shown below may look different on your computer, depending on how your operating system is configured.)

1. Turn on the computer, then place the provided CD-ROM into the computer's CD-ROM drive.
2. When the CD-ROM is recognized, the InstallShield setup window is displayed for a few seconds. Then, the "InstallShield Wizard" window appears.
3. Click the "Next" button.

* If the window at right does not appear, refer to "If the installation window does not appear when the CD-ROM is loaded" (p. 20).

* If you want to cancel the installation, click "Cancel".

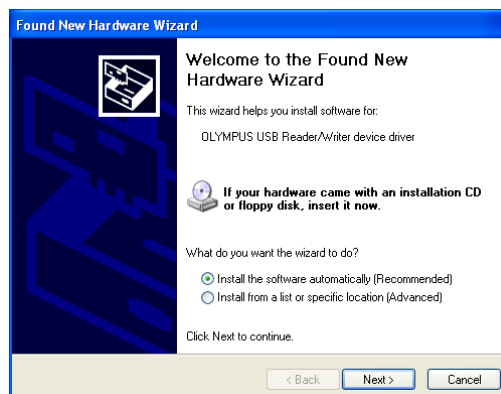
⚠ Do not connect to the computer before installation.



When the "Found New Hardware Wizard" window appears

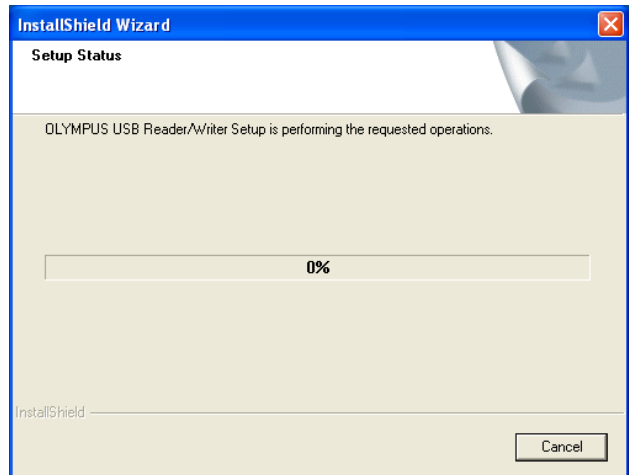
If you connect the MAUSB-10 to the computer before installing the device driver, the "Found New Hardware Wizard" window appears. In this case, follow the steps below.

1. Disconnect the MAUSB-10 from the computer (p. 29).
2. Click the "Cancel" button.
3. Place the CD-ROM into the CD-ROM drive. Follow the instructions from "Install the device driver" (this page).

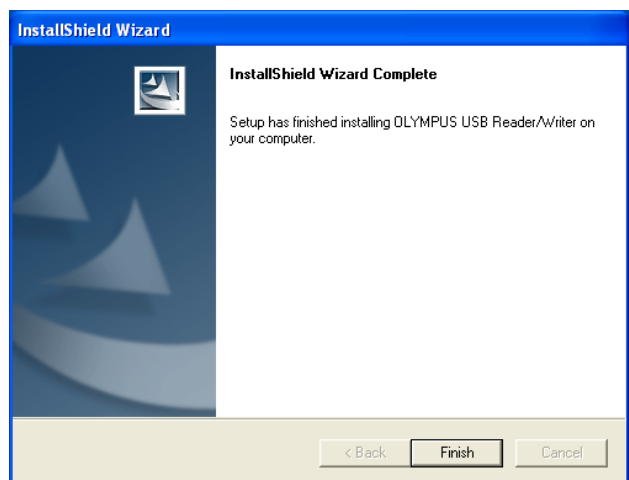


4. During installation, the window at right appears.

* The installation time may vary, depending on your computer.

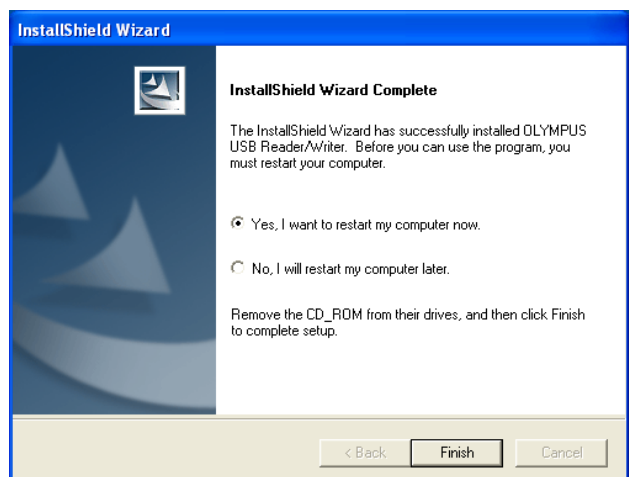


5. When installation of the device driver is complete, the window at right appears. Click the “Finish” button.



6. The window at right appears. Select “Yes, I want to restart my computer now.” if you are ready, then click “Finish”.

* The computer restarts.

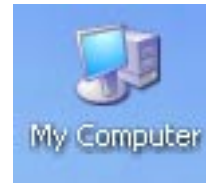


The device driver is now installed.
(Remove the CD-ROM from the CD-ROM drive and store it in a safe place.)

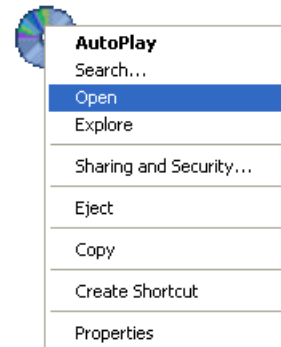
If the installation window does not appear when the CD-ROM is loaded

Follow the steps below to specify the file and start installing.

1. Double-click “My Computer”.



2. Right-click “OLYMPUS”. Select “Open” from the pop-up menu.



3. Double-click “MAUSB_10”.



4. Double-click “SETUP”.

* The “OLYMPUS USB Reader/Writer InstallShield Wizard” window appears. Start installing by following “Install the device driver” (p. 18).



Operating the MAUSB-10

The operating procedures for the MAUSB-10 under Windows 2000/XP are described below.

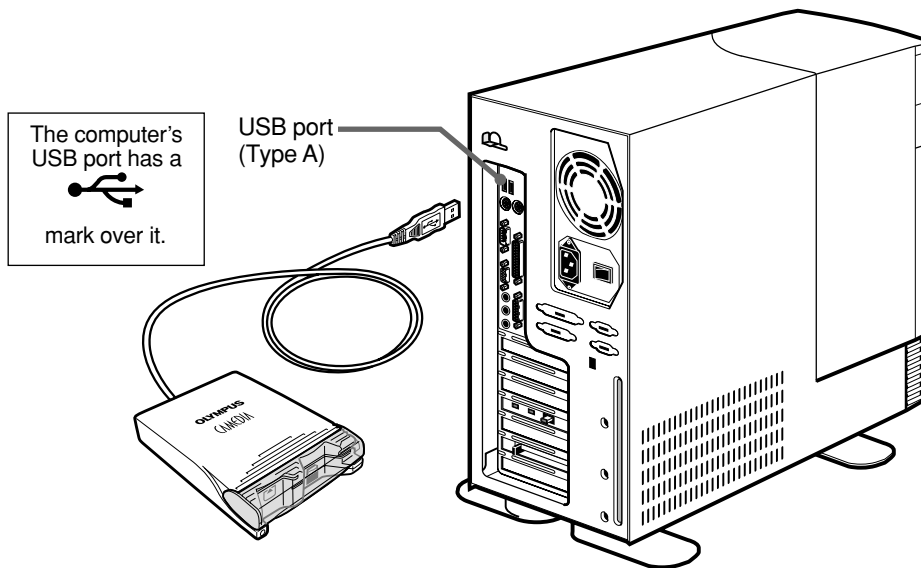
1 Connecting to the computer

<2000/XP ♦ Operation>

After installing the device driver, connect the MAUSB-10's connector to the USB port on your computer. (You can plug in the USB connector while the computer is in use.)

[Notes]

- Be sure to connect the MAUSB-10 to your computer **AFTER** installing the device driver.
- Make sure the connector is fully inserted.
- When inserting the connector, make sure it is oriented correctly (refer to the pictures below). Inserting the connector incorrectly may damage the connector and/or the computer's USB port.



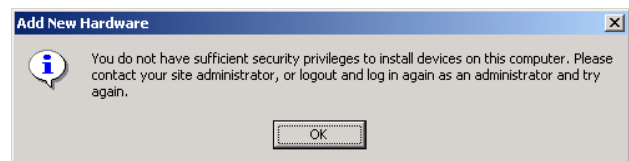
Installing the new hardware

The first time the MAUSB-10 is connected to your computer, the "Found New Hardware Wizard" window appears.

Log on with the user name "Administrator", or use a user name with administrator privileges, then follow the steps under [Installing the hardware] on the next page. Once the driver is installed, you only need to perform step 6 on the next page.

[For Windows 2000]

If you do not log on with the user name "Administrator", or if you do not use a user name with administrator privileges, the window at right appears and you cannot install the driver. Check the administrator's name and password, then log on again.



[For Windows XP]

If you do not log on with the user name "Administrator", or if you do not use a user name with administrator privileges, the window at right appears. Enter the correct user name and password then click "OK".



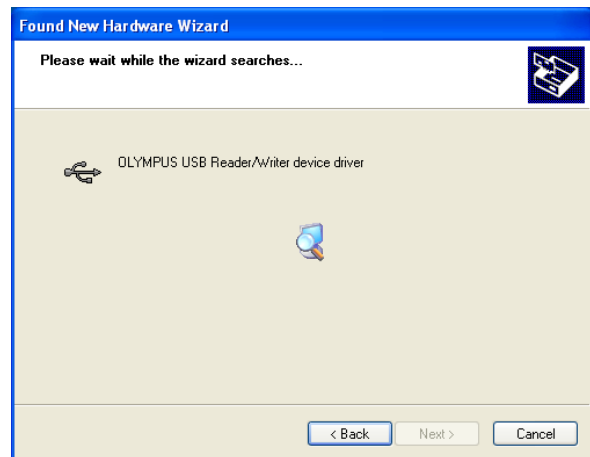
[Installing the hardware]

1. The “Found New Hardware Wizard” window appears when the MAUSB-10 is connected to Windows XP for the first time. Make sure that “Install the software automatically [Recommended]” is selected and click the “Next” button.

* On Windows 2000, the hardware will be installed automatically. Go to step 6 if there is no error message on the screen.



2. The searching window appears.



3. The “Hardware Installation” window appears.

- * Go to step 4 if this window does not appear.
- * This window displays the progress of the logo test that verifies compatibility between MAUSB-10 and Windows XP.
- * The MAUSB-10 did not pass the Microsoft Corporation logo test. However, Olympus verifies that it is compatible with Windows XP.

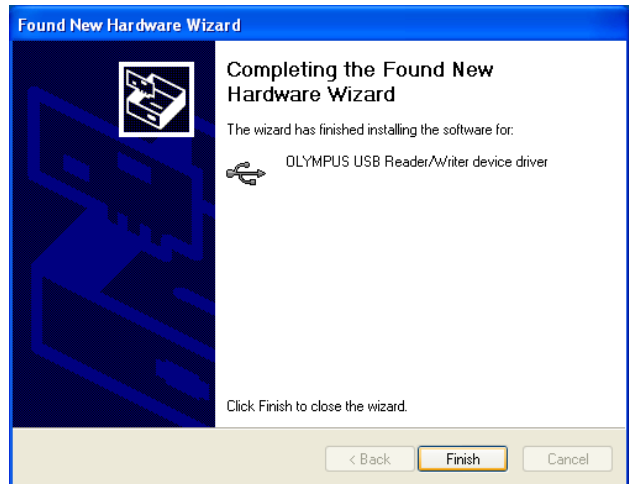
Click the “Continue Anyway” button.



4. The “Found New Hardware Wizard” window appears.



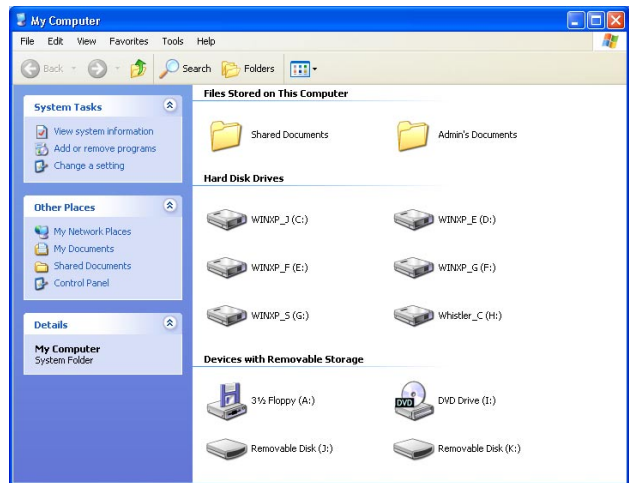
5. When the driver installation is complete, the window at right appears. Click the “Finish” button.



6. Confirm that two “Removable Disk” icons have been added by opening “My Computer” from the desktop.

* The drive letters (e.g. “D:”, “E:”, etc.) used by your computer may differ depending on your computer and/or connected optional devices.

* The icons used by your computer may differ depending on your computer and/or connected optional devices (p. 24).



When the MAUSB-10 is connected to your computer, it is recognized as a “Removable Disk”.

You can see two “Removable Disk” icons by opening “My Computer” from the desktop.

[Drive letters]

The drive letters for the two “Removable Disk” icons appear in alphabetical order, with the xD-Picture Card first and the SmartMedia second.

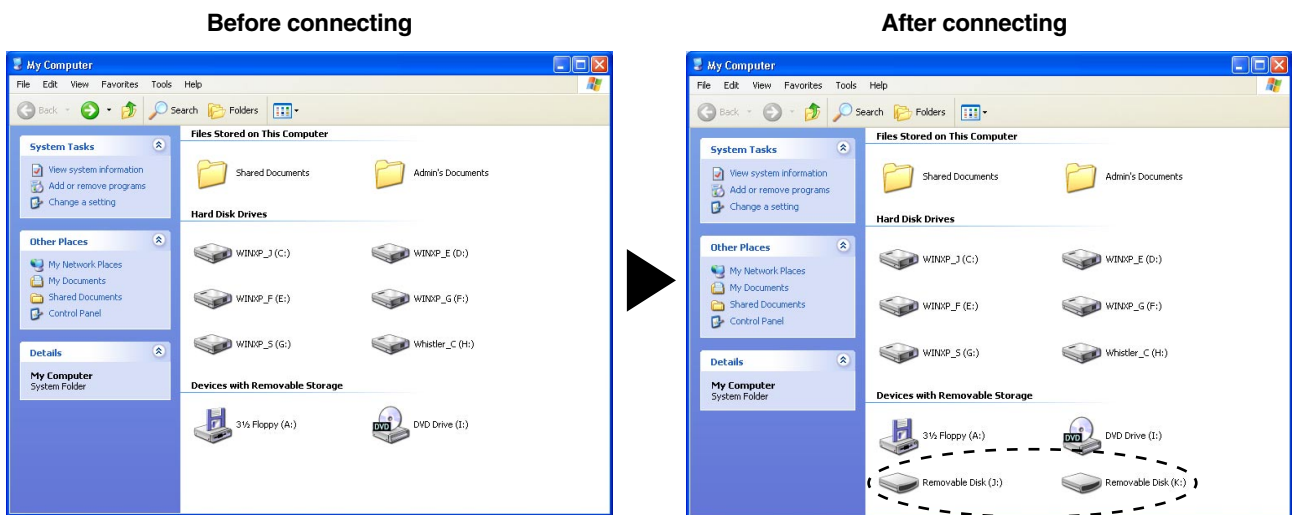
e.g. When the Removable Disks are recognized as (F:) and (G:) by a computer

(F:) → xD-Picture Card

(G:) → SmartMedia

[Note]

When labeling the “Removable Disk” icons, the computer may skip a drive letter if other are connected to the computer [e.g. (D:) xD-Picture Card, (E:) other device, (F:) SmartMedia]. Check the drive letters for the two “Removable Disk” icons after connecting this product.



MAUSB-10

* In this example, the Removable Disks are recognized as the J and K drive. The drive letters (e.g. “J:”, “K:”, etc.) used by your computer may differ depending on your computer and/or connected optional devices.

2 Inserting a card

<2000/XP ♦ Operation>

1. Make sure the MAUSB-10 is connected to the computer and insert the card into the corresponding card slot.

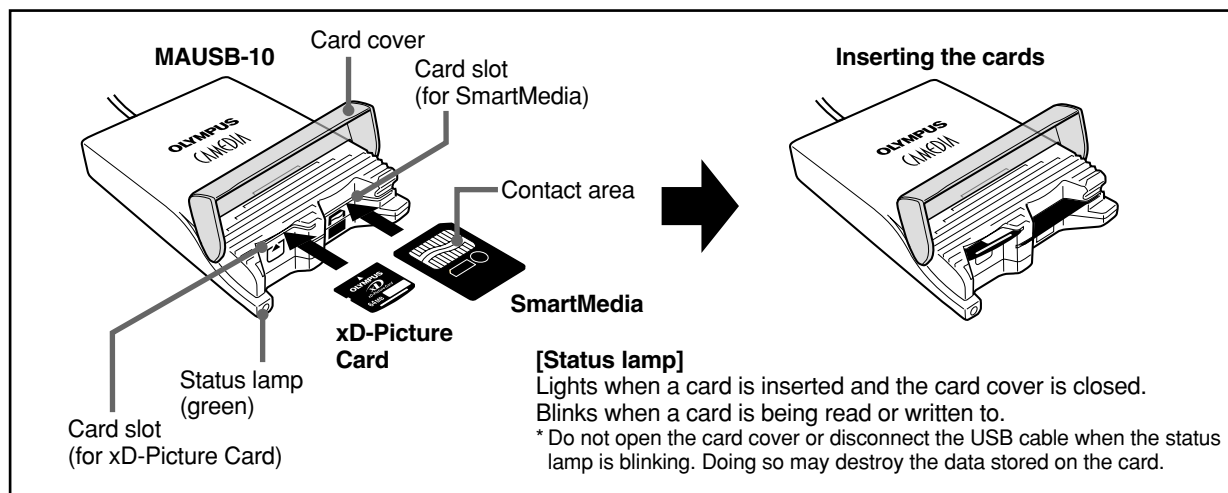
[xD-Picture Card]

Make sure the card is level and that the gold-colored contact area is facing down. Insert the card all the way into the left-hand slot.

[SmartMedia]

Make sure the card is level and that the gold-colored contact area is facing up. Insert the card all the way into the right-hand slot.

2. Close the card cover.



Notes

- Make sure that the card is facing the right way.
- Do NOT insert the card at an angle. Forcing a card in diagonally may damage the card and/or the MAUSB-10.
- MAUSB-10 will not be able to recognize the card(s) if the card cover is open.
- The status lamp blinks every two seconds if the card is not recognized correctly. If this happens, remove the card(s) from the MAUSB-10, wipe the contact area with a dry cloth, and insert the card(s) again. If the problem persists, the card may be damaged.

Close all software programs that are using data on the card (e.g. Explorer, graphics applications), then follow the steps below.

Attention!

If you do not follow the steps below, the data on the card(s) may be damaged.

1. **Double-click** “My Computer” on the desktop.

2. **[To remove a card]: Right-click** the corresponding “Removable Disk” icon, then click “Eject” in the pop-up menu.

[To remove one card/both cards, with two cards inserted]: Right-click the both “Removable Disk” icons, then click “Eject” in each pop-up menu.

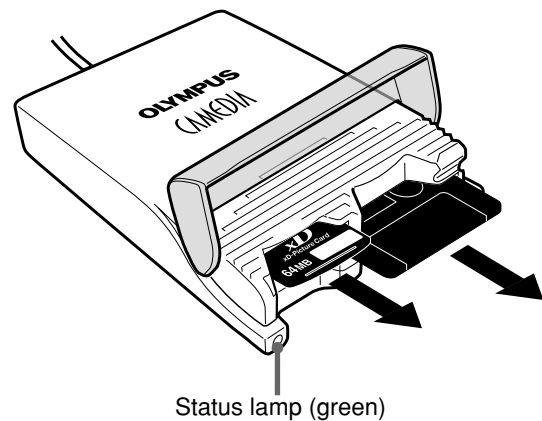
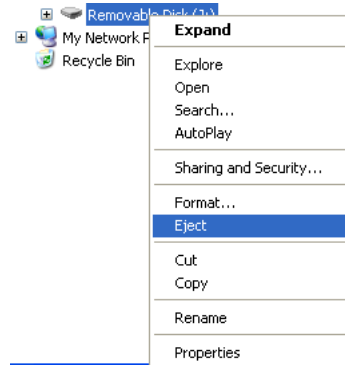
* You must **right-click** BOTH Removable Disk icons, even if you want to remove only one card.

* The status lamp goes off when this step is performed correctly.

* The card will not be ejected when “Eject” is clicked in this step.

3. Make sure that the status lamp is off, then open the card cover and pull the card(s) out of the card slot(s) as shown.

* You can only remove a card(s) under the user name “Administrator” or a user name with administrator privileges. Log on with the correct user name and password if you want to remove the card(s).

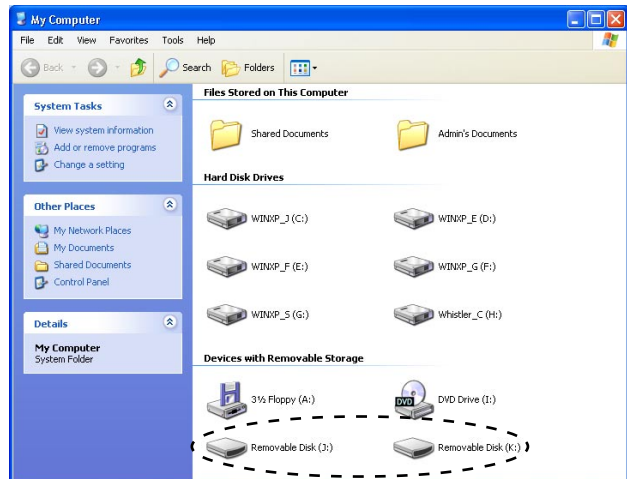


Note

NEVER open the card cover, remove the card, or unplug the USB connector while the status lamp is blinking. Doing so may destroy the data on the card or the card itself, or cause the computer to malfunction.

1. Start up your computer.
2. **Double-click** “My Computer” from the desktop.
3. To view the contents of a card, **double-click** the corresponding “Removable Disk” icon.

* For information about how to locate the files you want to copy, refer to the manual for the product used to record them.



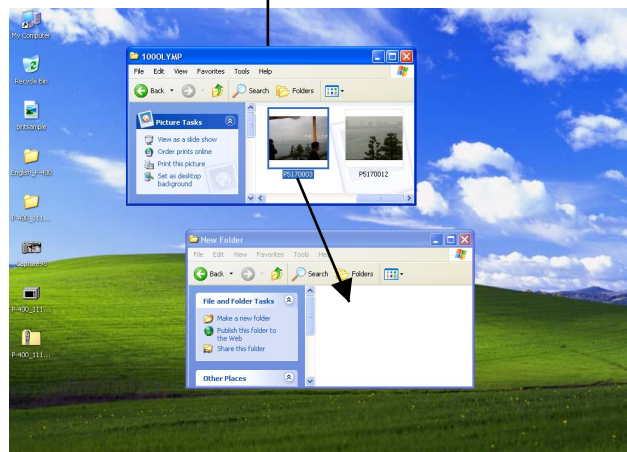
* In this example, the Removable Disks are recognized as the J and K drive. The drive letters (e.g. “J:”, “K:”, etc.) used by your computer may differ depending on your computer and/or connected optional devices.

4. **Drag** the file icons you want to copy and **drop** them onto the destination folder.

* The process is the same as copying files from a floppy disk.

* It is also possible to move files to another folder, erase files, or write data from another folder. (Data cannot be written to or erased from a SmartMedia card which has a write-protect seal affixed to it.)

The window containing the files to be copied



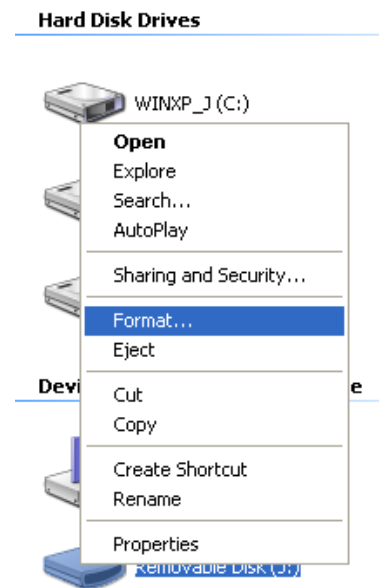
Drag & Drop

To perform a drag and drop, press and hold the left mouse button over the selected file(s), then move the mouse (drag) and release the button at the place where you want to copy (drop).

[Before formatting the card]

- To format a card, log on with the user name “Administrator”, or use a user name with administrator privileges. Otherwise, formatting the card will be impossible.
- **If a card is going to be used with a digital camera, be sure to format it with the camera you are using. Cards formatted by the computer using the MAUSB-10 may not be recognized by the digital camera.**
- Formatting a SmartMedia card is not possible when a write-protect seal is affixed to it. (It is not possible to format a SmartMedia card or write, move, or erase data on a SmartMedia card which has a write-protect seal affixed to it. For more details, refer to the SmartMedia card’s instruction manual.)
- Formatting erases all data in the card. All important data should be copied to a hard disk or floppy disk in advance.
- Double-clicking the “Removable Disk” icon will display the directory and the list of image files on the inserted card.

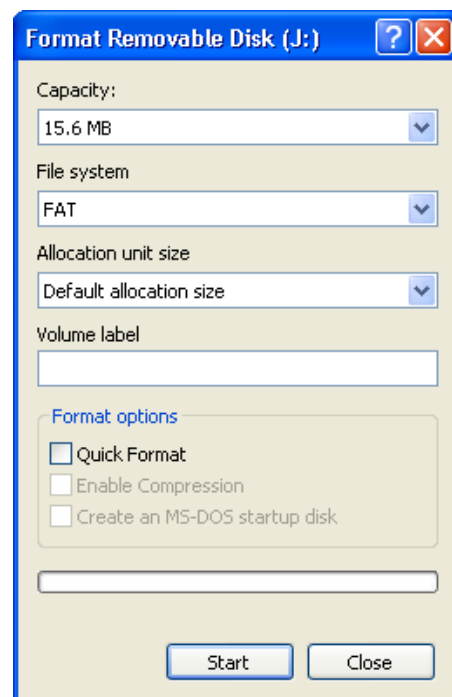
1. Double-click “My Computer”, then **right-click** on the “Removable Disk” icon corresponding to the card you want to format. Select “Format” from the pop-up menu.



2. Select “FAT” under “File system”, then click the “Start” button.
 * After formatting is complete, the card is ready for use.

[Note]

Use only the FAT file system. If “NTFS” or “FAT32” is selected, the card may not be formatted correctly.



* Example shows a 16MB card

Close all software programs that are using data on the card (e.g. Explorer, graphics applications), then follow the steps below.

1. Make sure that the status lamp is NOT on.
2. **Left-click** the “Unplug or Eject Hardware” icon on the taskbar.

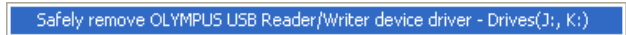
Unplug or Eject Hardware



3. A message box titled “Safely remove OLYMPUS USB Reader/Writer device driver-Drives (J:, K:)” appears on the taskbar. Click on it.

* The drive letters (J:, K:) above will differ depending on your computer.

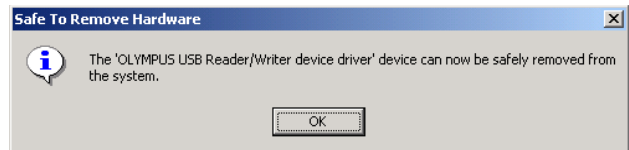
4. Click the “OK” button.



* In this example, the Removable Disks are recognized as the J and K drive.

* For Windows XP, the message box at right appears when the balloon help is on.

The MAUSB-10 is ready to be disconnected from your computer.



5. Unplug the USB connector from the computer.

* Do not pull the cable when disconnecting. Doing so could damage the MAUSB-10 or the cable.

* You can unplug the MAUSB-10 with the computer's power on. (It is not required to turn off the computer, restart it, or have it in the sleep mode.)

* Close all software programs that are using data on the card (e. g. Explorer, graphics applications) before removing the card(s). Otherwise, you cannot perform this step.

How to uninstall the device driver <2000/XP>

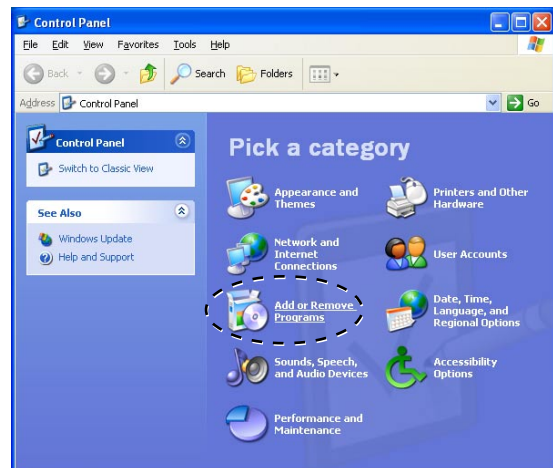
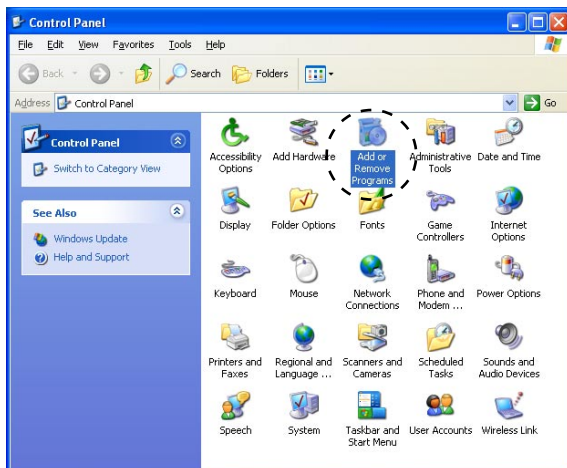
The device driver can be deleted if it is no longer needed. First make sure that the MAUSB-10 is disconnected from the computer's USB port, then follow the steps below.

* On-screen displays or messages may vary depending on the version of Windows you are using.

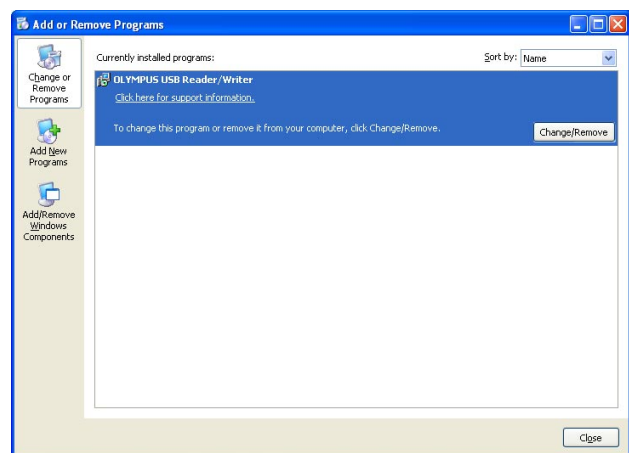
1. Click the "Start" button, then select "Settings" — "Control Panel".



2. Double-click "Add or Remove Programs".

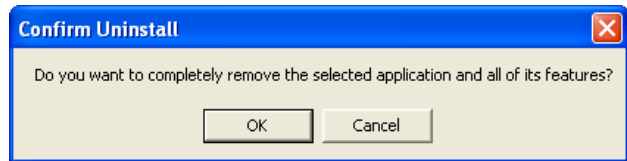


3. Select "OLYMPUS USB Reader/Writer", then click the "Change/Remove" button.

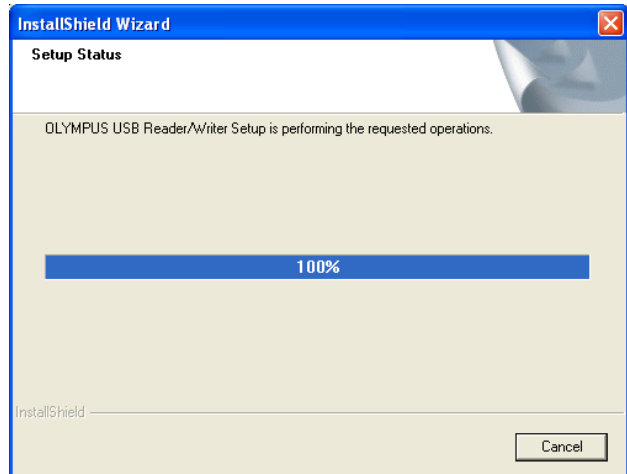


How to uninstall the device driver (Cont.) <2000/XP>

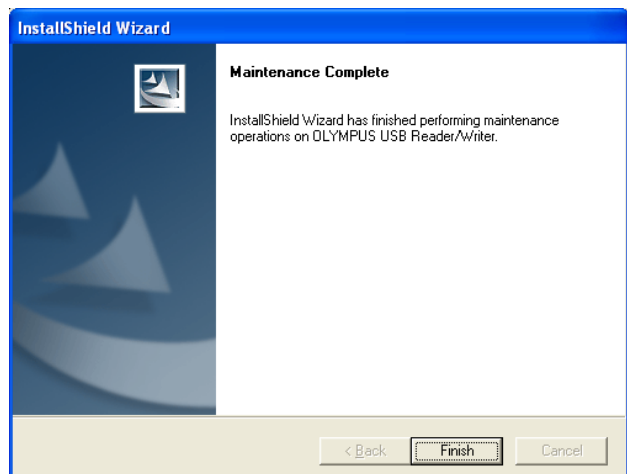
4. A confirmation window appears. Click “OK”.



5. The “InstallShield Wizard” window appears.

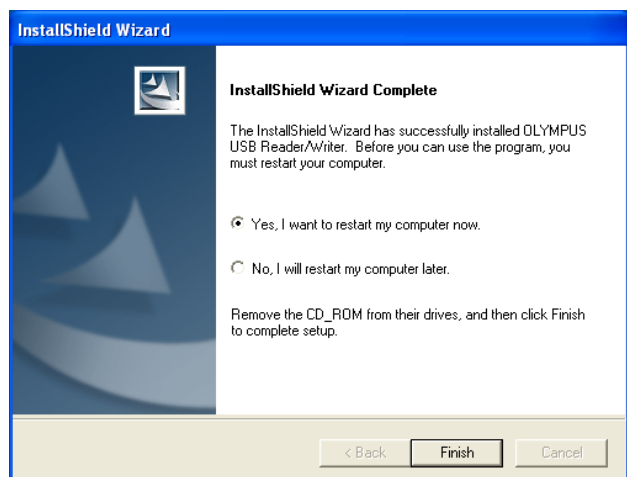


6. The window at right appears. Click the “Finish” button.



7. The window at right appears. Select “Yes, I want to restart my computer now.” if you are ready, then click “Finish”.

* The computer restarts.



The device driver is no longer installed.

Macintosh OS 8.6~9.2

How to install

Also refer to your computer's user manual and the manuals for any optional devices you are using.

1 Turn on the computer

<Mac OS 8.6~9.2 ♦ Install>

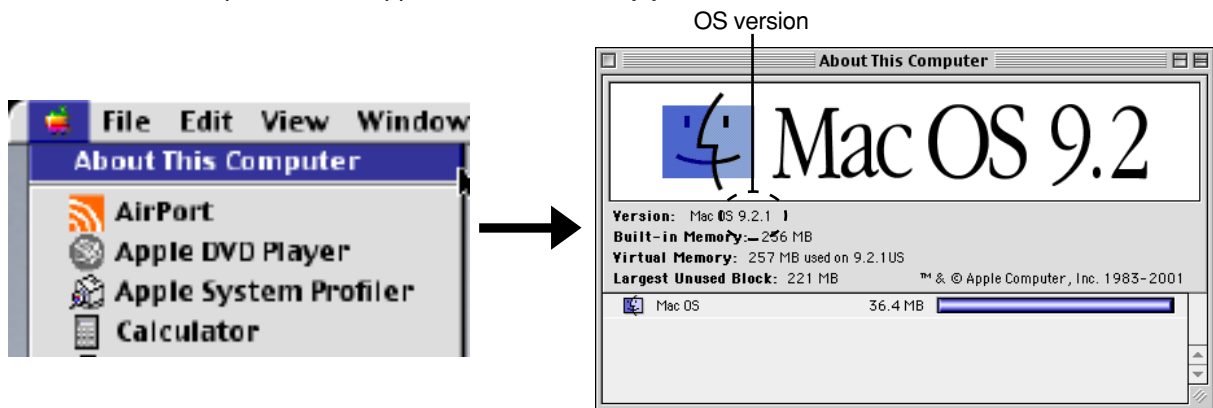
Turn on your computer's power (and connected devices) to start Mac OS.

[Notes]

- Do NOT connect the MAUSB-10 to the computer until installation of the device driver (p. 33) is completed.
- Before installation, make sure that your Mac OS version is 8.6 - 9.2.
- To use a DOS/Windows formatted SmartMedia or the SmartMedia formatted on a digital camera, File Exchange (provided with Mac OS) must be installed. Select "Control Panels" from the Apple Menu to check if File Exchange is installed on your computer. (Refer to Mac OS "Help" for more details.)
- Note that the windows shown below may look different on your computer, depending on how your operating system is configured.

[To identify your Mac OS version]

Select "About This Computer" in the Apple menu and identify your Mac OS version.



2 Load the CD-ROM

<Mac OS 8.6~9.2 ♦ Install>

Place the provided CD-ROM in the computer's CD-ROM drive.

The "OLYMPUS" icon appears on the desktop.



3 Install the device driver

<Mac OS 8.6~9.2 ♦ Install>

When using the MAUSB-10 for the first time, you must first install the device driver included on the provided CD-ROM.

[Note]

Be sure not to connect the MAUSB-10 to the computer until installation of the device driver is completed.

Before installation, make sure that:

- Your computer is turned on.
- The provided CD-ROM is loaded properly.
- All applications are closed.
- The MAUSB-10 is NOT connected to the computer's USB port.

Then, follow the steps below to install the driver on your computer.

(*Note that the windows shown below may look different on your computer, depending on how your operating system is configured.)

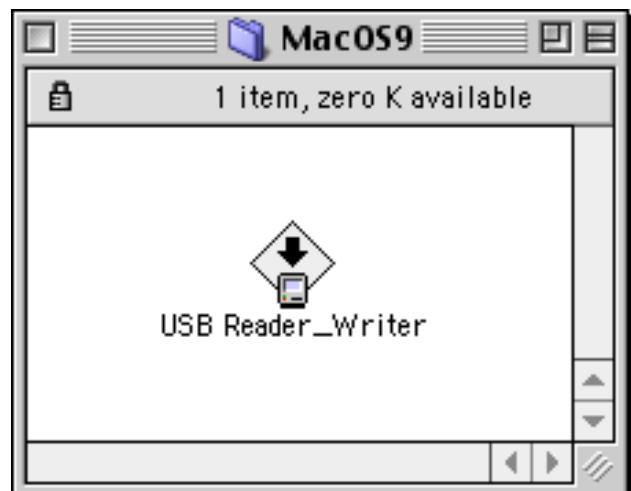
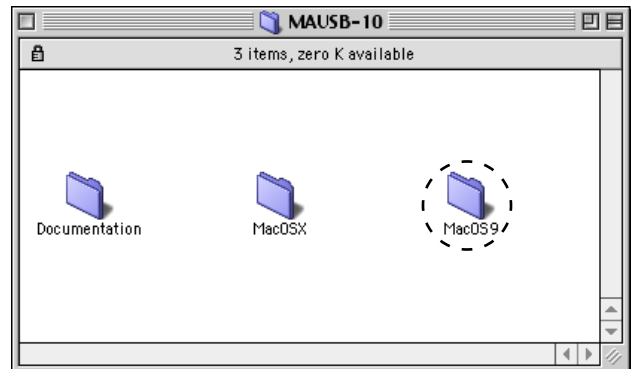
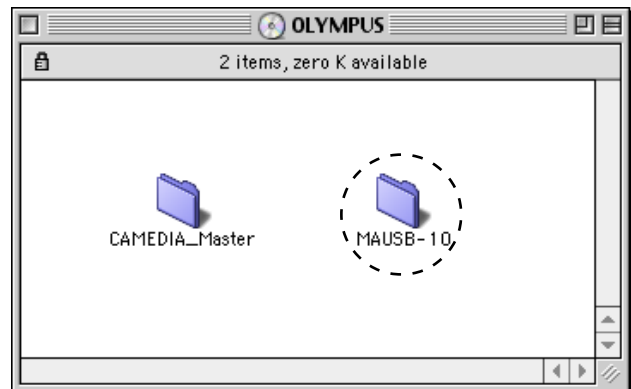
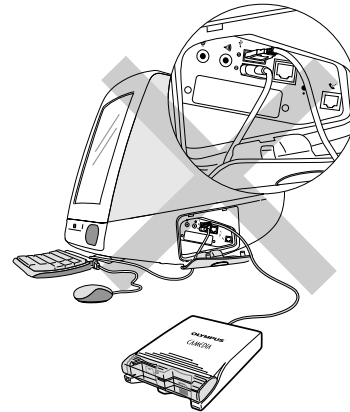
1. **Double-click** the "OLUMPUS" icon.

2. **Double-click** the "MAUSB-10" folder.

3. **Double-click** the "Mac OS 9" folder.

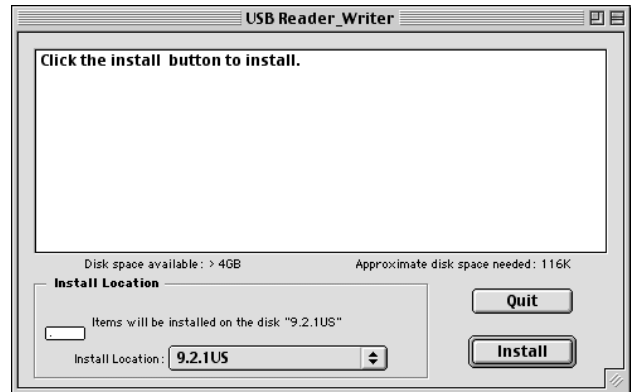
4. **Double-click** "USB Reader_Writer".

⚠ Do not connect to the computer before installation.

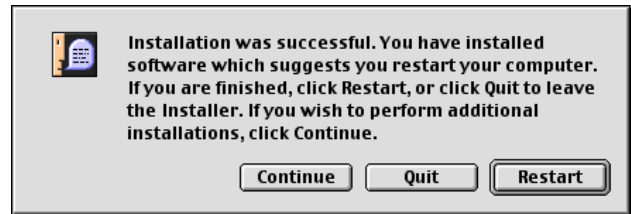


5. When the Mac OS 8.x, 9.x installer starts up, the window at right appears.

Confirm "Install Location", then click the "Install" button.



6. Click the "Restart" button.



The device driver is now installed.
(Remove the CD-ROM from the CD-ROM drive and store it in a safe place.)

Operating the MAUSB-10

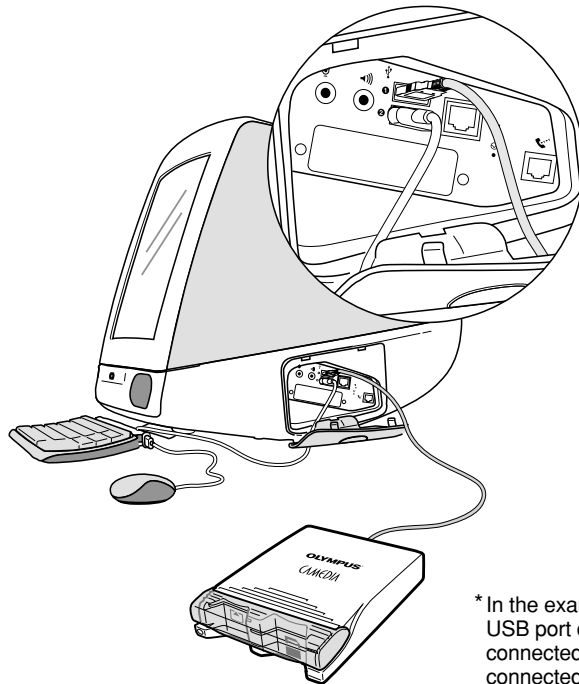
The operating procedure for the MAUSB-10 under Mac OS is described below.

1 Connecting to the computer <Mac OS 8.6~9.2 ♦ Operation>

After installing the device driver, connect the MAUSB-10's connector to the USB port on your computer. (You can plug in the USB connector while the computer is in use.)

[Notes]

- **Be sure to connect the MAUSB-10 to your computer AFTER installing the device driver.**
- Make sure the connector is fully inserted.
- When inserting the connector, make sure it is oriented correctly (refer to the pictures below). Inserting the connector incorrectly may damage the connector and/or the computer's USB port.



* In the example, the MAUSB-10 is connected to the USB port of an iMac computer. The MAUSB-10 is connected to USB port 1 and the keyboard is connected to USB port 2.

2 Inserting a card

<Mac OS 8.6~9.2 ♦ Operation>

1. Make sure the MAUSB-10 is connected to the computer and insert the card into the corresponding card slot.

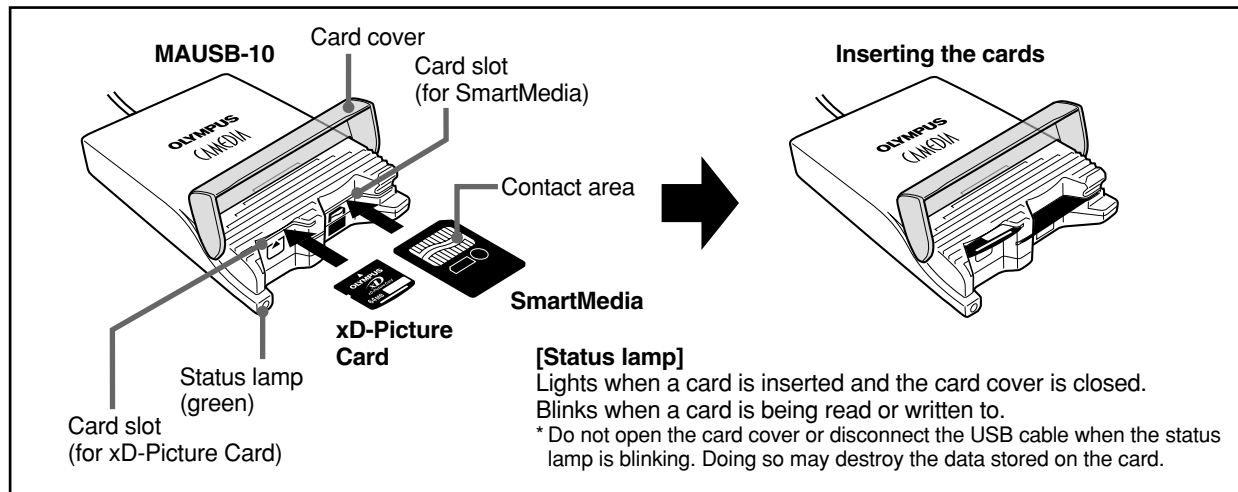
[xD-Picture Card]

Make sure the card is level and that the gold-colored contact area is facing down. Insert the card all the way into the left-hand slot.

[SmartMedia]

Make sure the card is level and that the gold-colored contact area is facing up. Insert the card all the way into the right-hand slot.

2. Close the card cover.



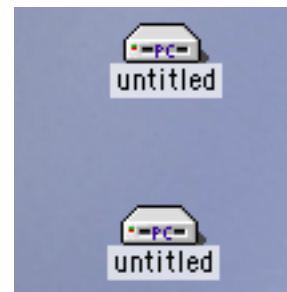
[When the card is recognized correctly]

The icon at right appears when the card is inserted and recognized correctly.

* The image at right is what happens when both an xD-Picture Card and SmartMedia card are inserted.

When only one card is inserted, only one icon appears on the desktop.

* The titles of the cards vary depending on the cards inserted.



Notes

- Make sure that the card is facing the right way.
- Do NOT insert the card at an angle. Forcing a card in diagonally may damage the card and/or the MAUSB-10.
- MAUSB-10 will not be able to recognize the card(s) if the card cover is open.
- The status lamp blinks every two seconds if the card is not recognized correctly. If this happens, remove the card(s) from the MAUSB-10, wipe the contact area with a dry cloth, and insert the card(s) again. If the problem persists, the card may be damaged.

Close all software programs that are using data on the card (e. g. graphics applications), then follow the steps below.

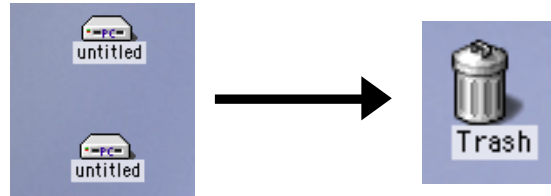
Attention!

If you do not follow the steps below, the data on the card(s) may be damaged.

1. **[To remove a card]: Drag & drop** the card's icon onto the Trash icon.

[To remove one card/both cards, with two cards inserted]: Drag & drop both card icons onto the Trash icon.

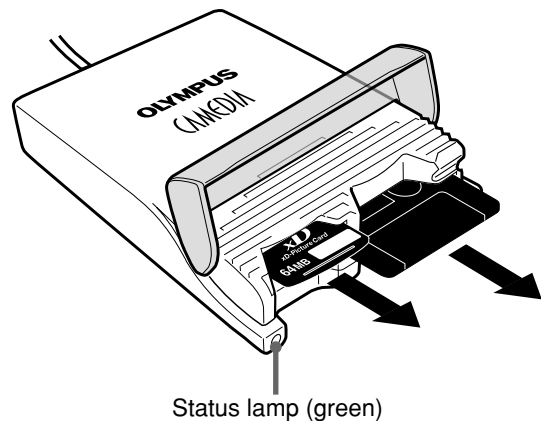
- * You must **drag & drop** BOTH card icons, even if you want to remove only one card.
- * The status lamp goes off when this step is performed correctly.



Drag & Drop

To perform a drag and drop, press and hold the mouse button over the selected file(s), then move the mouse (drag) and release the button at the place where you want to copy (drop).

2. Make sure that the status lamp is off, then open the card cover and pull the card(s) out of the card slot(s) as shown.



Note

NEVER open the card cover, remove the card, or unplug the USB connector while the status lamp is blinking. Doing so may destroy the data on the card or the card itself, or cause the computer to malfunction.

4 Copying files from a card

<Mac OS 8.6~9.2 ♦ Operation>

1. Insert a card in the MAUSB-10.

- * The status lamp blinks, then the card icon appears on the desktop.
- * The icon's appearance may vary, depending on the card and the OS version.

2. Double-click the icon to display the files that you want to copy.

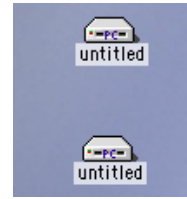
- * For information about how to locate the files you want to copy, refer to the manual for the product used to record them.

3. Drag the file icons you want to copy and drop them onto the destination folder.

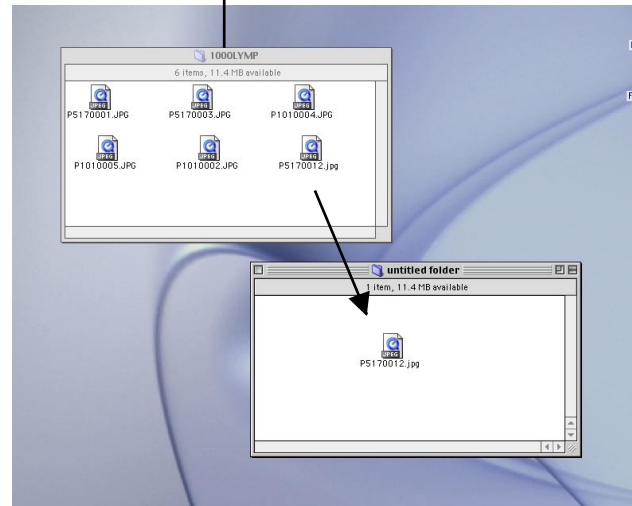
- * The process is the same as copying files from a floppy disk.
- * It is also possible to move files to another folder, erase files, or write data from another folder. (Data cannot be written to or erased from a SmartMedia card which has a write-protect seal affixed to it.)

Drag & Drop

To perform a drag and drop, press and hold the mouse button over the selected file(s), then move the mouse (drag) and release the button at the place where you want to copy (drop).



The window containing the files to be copied



5 Formatting a card

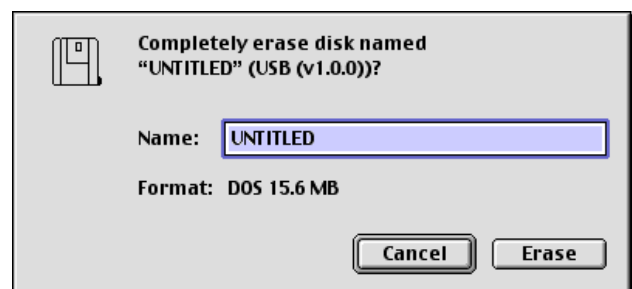
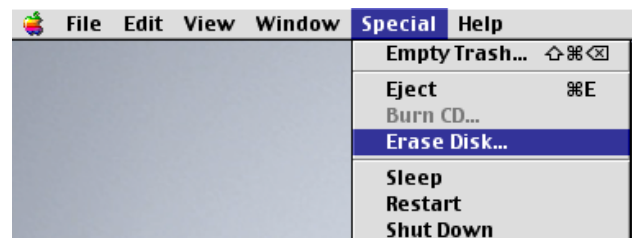
<Mac OS 8.6~9.2 ♦ Operation>

[Before formatting the card]

- **If a card is going to be used with a digital camera, be sure to format the card with the camera you are using. Cards formatted by the computer using the MAUSB-10 may not be recognized by the digital camera.**
- Formatting a SmartMedia card is not possible when a write-protect seal is affixed to it. (It is not possible to format a SmartMedia card or write, move, or erase data on a SmartMedia card which has a write-protect seal affixed to it. For more details, refer to the SmartMedia card's instruction manual.)
- Formatting erases all data in the card. All important data should be copied to a hard disk or floppy disk in advance.

[Formatting a card with the MAUSB-10]

1. Select "Erase Disk" from the "Special" menu.
2. A confirmation window appears. Click "Erase".



6 Disconnecting the MAUSB-10 <Mac OS 8.6~9.2 ♦ Operation>

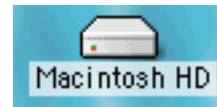
Close all software programs that are using data on the card (e. g. graphics applications), then follow the steps below.

1. Make sure that the status lamp is NOT on.
 - * If the status lamp is on, **drag & drop** the card icon(s) onto the Trash (⌘ p. 37).
2. Open the card cover and remove the card (⌘ p. 37).
3. Unplug the MAUSB-10 from the computer.

How to uninstall the device driver <Mac OS 8.6~9.2>

The device driver can be deleted if it is no longer needed. First make sure that the MAUSB-10 is disconnected from the computer's USB port, then follow the steps below.

1. From the desktop, **double-click** the hard disk icon.



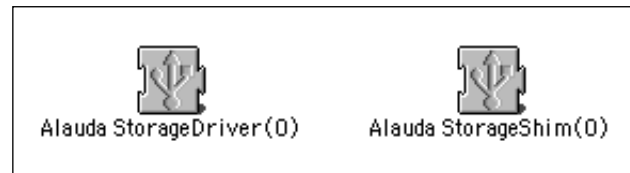
2. **Double-click** "System Folder".



3. **Double-click** "Extensions".



4. Delete the 2 files installed previously (shown at right).
Drag and drop the files onto the Trash icon.



Drag & Drop

To perform a drag and drop, press and hold the mouse button over the selected file(s), then move the mouse (drag) and release the button at the place where you want to copy (drop).



5. Restart the computer to confirm uninstallation of the device driver.

The device driver is no longer installed.

Macintosh OS X

How to install

Also refer to your computer's user manual and the manuals for any optional devices you are using.

1 Turn on the computer

<Mac OS X ♦ Install>

Turn on your computer's power (and connected devices) to start Mac OS.

[Notes]

- Do NOT connect the MAUSB-10 to the computer until installation of the device driver (p. 41) is completed.
- It is not possible to uninstall the device driver in Mac OS X.
- Before installation, make sure that your Mac OS version is X (v10.1.2 – v10.2.1).
- To use a DOS/Windows formatted SmartMedia or the Smartmedia formatted on a digital camera, File Exchange (provided with Mac OS) must be installed. Select "Control Panels" from the Apple Menu to check if File Exchange is installed on your computer. (Refer to Mac OS "Help" for more details.)
- Note that the windows shown below may look different on your computer, depending on how your operating system is configured.

[To identify your Mac OS version]

Select "About This Mac" in the Apple menu and identify your Mac OS version.



2 Load the CD-ROM

<Mac OS X ♦ Install>

Place the provided CD-ROM in the computer's CD-ROM drive.

The "OLYMPUS" icon appears on the desktop.



3 Install the device driver

<Mac OS X ♦ Install>

When using the MAUSB-10 for the first time, you must first install the device driver included on the provided CD-ROM.

[Notes]

- **Be sure not to connect the MAUSB-10 to the computer until installation of the device driver is completed.**
- **It is not possible to uninstall the device driver in Mac OS X.**

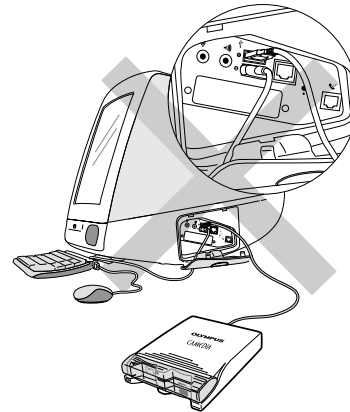
Before installation, make sure that:

- Your computer is turned on.
- The provided CD-ROM is loaded properly.
- All applications are closed.
- The MAUSB-10 is NOT connected to the computer's USB port.

Then, follow the steps below to install the driver on your computer.

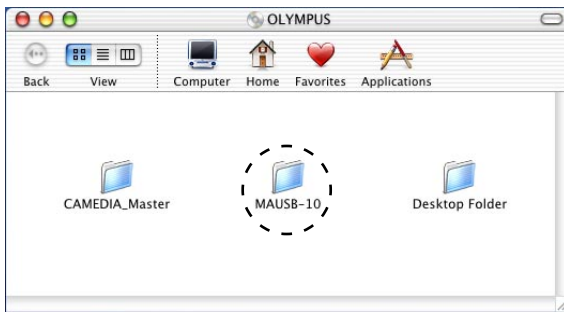
(*Note that the windows shown below may look different on your computer, depending on how your operating system is configured.)

⚠ Do not connect to the computer before installation.

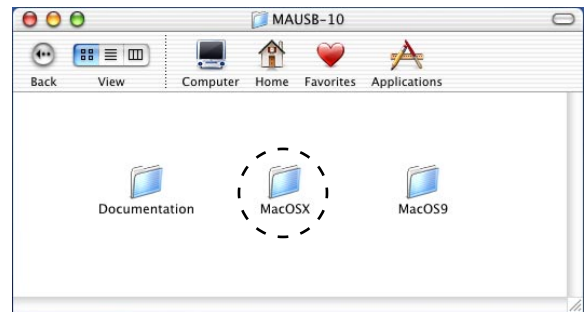


1. **Double-click** the "OLYMPUS" icon.

2. **Double-click** the "MAUSB-10" folder.



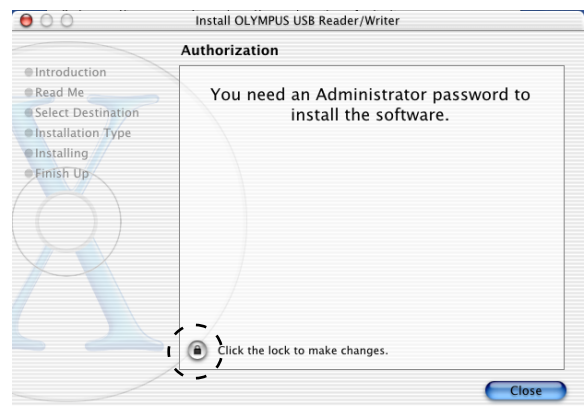
3. **Double-click** the "Mac OS X" folder.



4. **Double-click** "USB Reader_Writer.pkg".



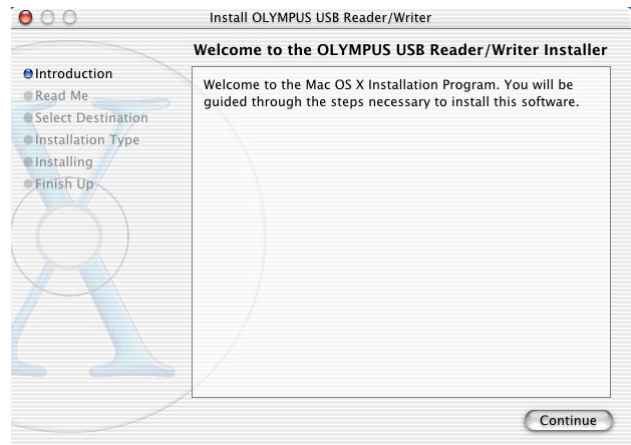
5. The window at right appears. Click the lock icon next to "Click the lock to make changes".



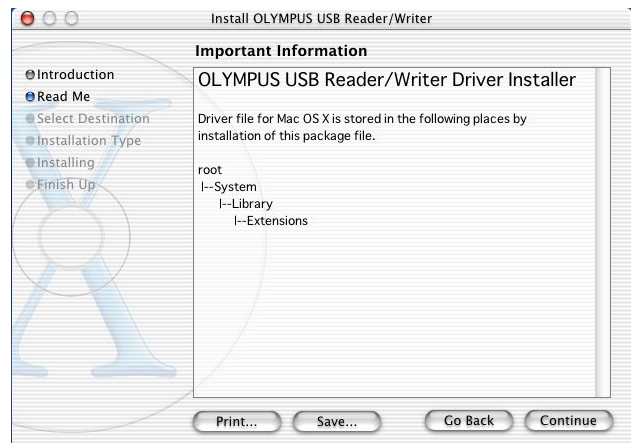
6. Enter the administrator's name and the password, then click the "OK" button.



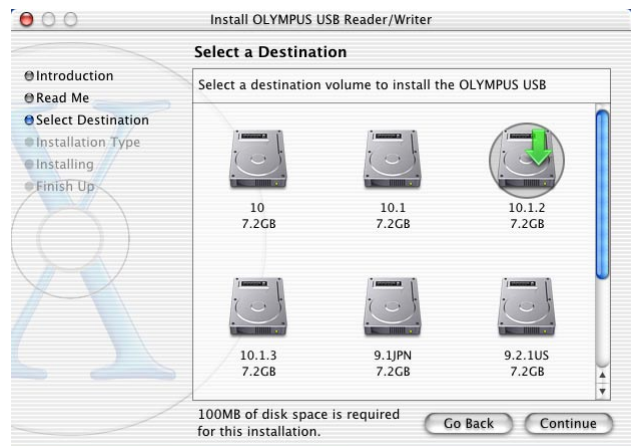
7. Click the "Continue" button.



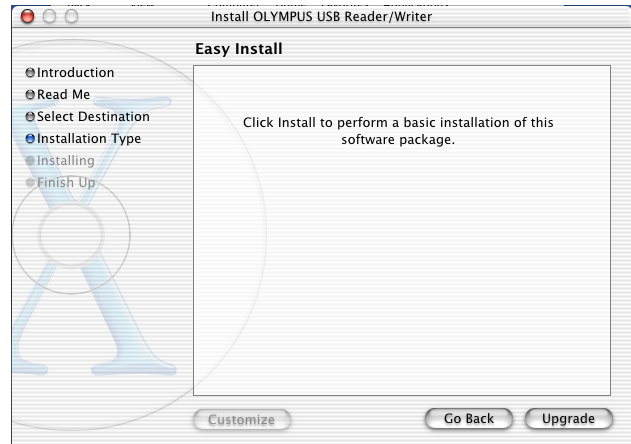
8. Click the "Continue" button.



9. Select the disk to install on, then click the "Continue" button.



10. Click the “Install” (or “Upgrade”) button.



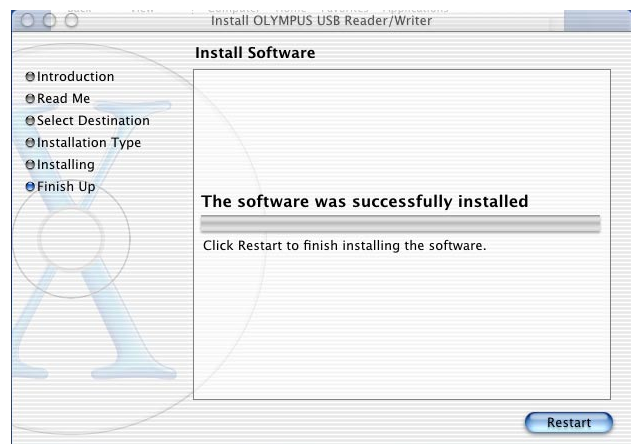
11. Click the “Continue Installation” button.



12. The window at right appears during the installation.



13. Click the “Restart” button.



The device driver is now installed.
(Remove the CD-ROM from the CD-ROM drive and store it in a safe place.)

Operating the MAUSB-10

The operating procedure for the MAUSB-10 under Mac OS is described below.

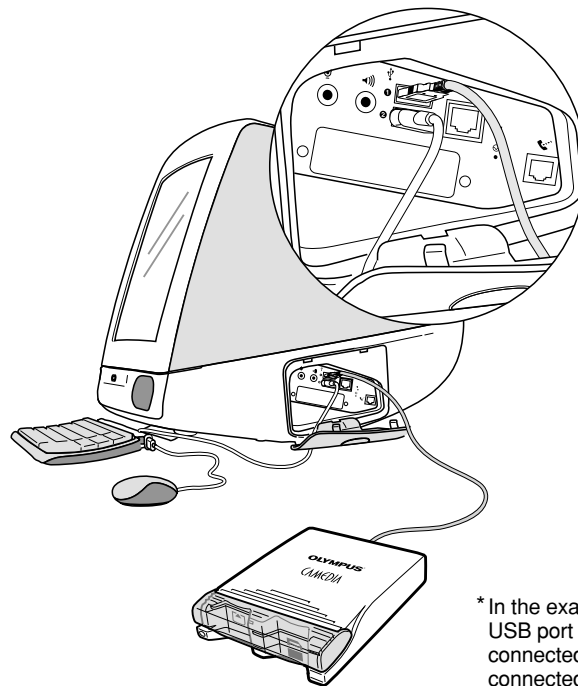
1 Connecting to the computer

<Mac OS X ♦ Operation>

After installing the device driver, connect the MAUSB-10's connector to the USB port on your computer. (You can plug in the USB connector while the computer is in use.)

[Notes]

- **Be sure to connect the MAUSB-10 to your computer AFTER installing the device driver.**
- Make sure the connector is fully inserted.
- When inserting the connector, make sure it is oriented correctly (refer to the pictures below). Inserting the connector incorrectly may damage the connector and/or the computer's USB port.



* In the example, the MAUSB-10 is connected to the USB port of an iMac computer. The MAUSB-10 is connected to USB port 1 and the keyboard is connected to USB port 2.

2 Inserting a card

<Mac OS X ♦ Operation>

1. Make sure the MAUSB-10 is connected to the computer and insert the card into the corresponding card slot.

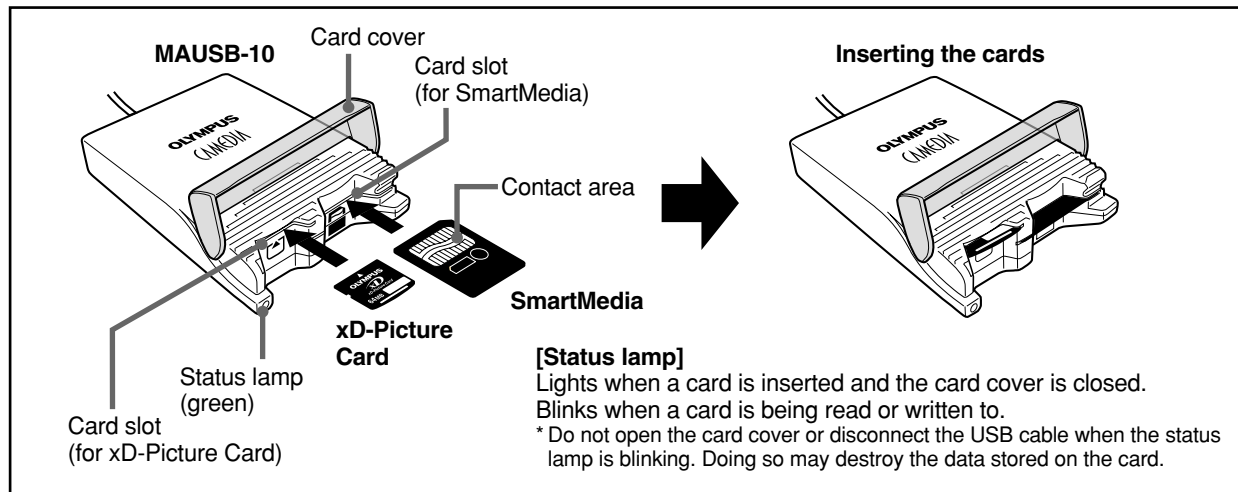
[xD-Picture Card]

Make sure the card is level and that the gold-colored contact area is facing down. Insert the card all the way into the left-hand slot.

[SmartMedia]

Make sure the card is level and that the gold-colored contact area is facing up. Insert the card all the way into the right-hand slot.

2. Close the card cover.

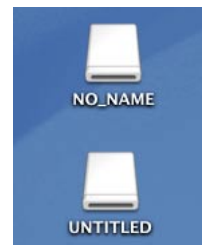


[When the card is recognized correctly]

The icon at right appears when the card is inserted and recognized correctly.

* The image at right is what happens when both an xD-Picture Card and SmartMedia card are inserted. When only one card is inserted, only one icon appears on the desktop.

* The titles of the cards vary depending on the cards inserted.



Notes

- Make sure that the card is facing the right way.
- Do NOT insert the card at an angle. Forcing a card in diagonally may damage the card and/or the MAUSB-10.
- MAUSB-10 will not be able to recognize the card(s) if the card cover is open.
- The status lamp blinks every two seconds if the card is not recognized correctly. If this happens, remove the card(s) from the MAUSB-10, wipe the contact area with a dry cloth, and insert the card(s) again. If the problem persists, the card may be damaged.

3 Removing a card

<Mac OS X ♦ Operation>

Close all software programs that are using data on the card (e. g. graphics applications), then follow the steps below.

Attention!

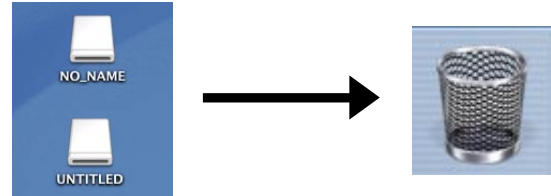
If you do not follow the steps below, the data on the card(s) may be damaged.

1. **[To remove a card]: Drag & drop** the card's icon onto the Trash icon.

[To remove one card/both cards, with two cards inserted]: Drag & drop both card icons onto the Trash icon.

* You must **drag & drop** BOTH card icons, even if you want to remove only one card.

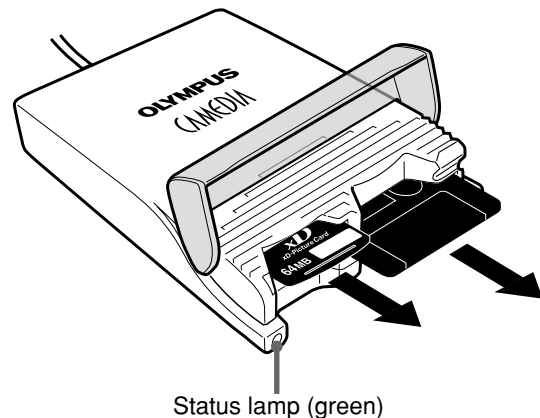
* The status lamp goes off when this step is performed correctly.



Drag & Drop

To perform a drag and drop, press and hold the mouse button over the selected file(s), then move the mouse (drag) and release the button at the place where you want to copy (drop).

2. Make sure that the status lamp is off, then open the card cover and pull the card(s) out of the card slot(s) as shown.



Note

NEVER open the card cover, remove the card, or unplug the USB connector while the status lamp is blinking. Doing so may destroy the data on the card or the card itself, or cause the computer to malfunction.

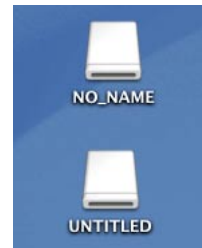
4 Copying files from a card

<Mac OS X ♦ Operation>

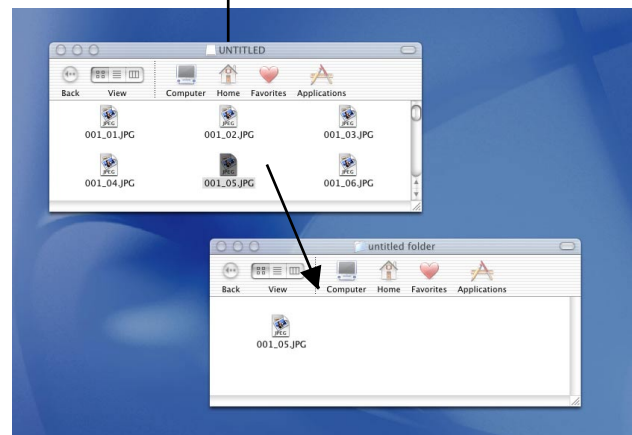
1. Insert a card in the MAUSB-10.
 - * The status lamp blinks, then the card icon appears on the desktop.
 - * The icon's appearance may vary, depending on the card and the OS version.
2. **Double-click** the icon to display the files that you want to copy.
 - * For information about how to locate the files you want to copy, refer to the manual for the product used to record them.
3. **Drag** the file icons you want to copy and **drop** them onto the destination folder.
 - * The process is the same as copying files from a floppy disk.
 - * It is also possible to move files to another folder, erase files, or write data from another folder. (Data cannot be written to or erased from a SmartMedia card which has a write-protect seal affixed to it.)

Drag & Drop

To perform a drag and drop, press and hold the mouse button over the selected file(s), then move the mouse (drag) and release the button at the place where you want to copy (drop).



The window containing the files to be copied



5 Formatting a card

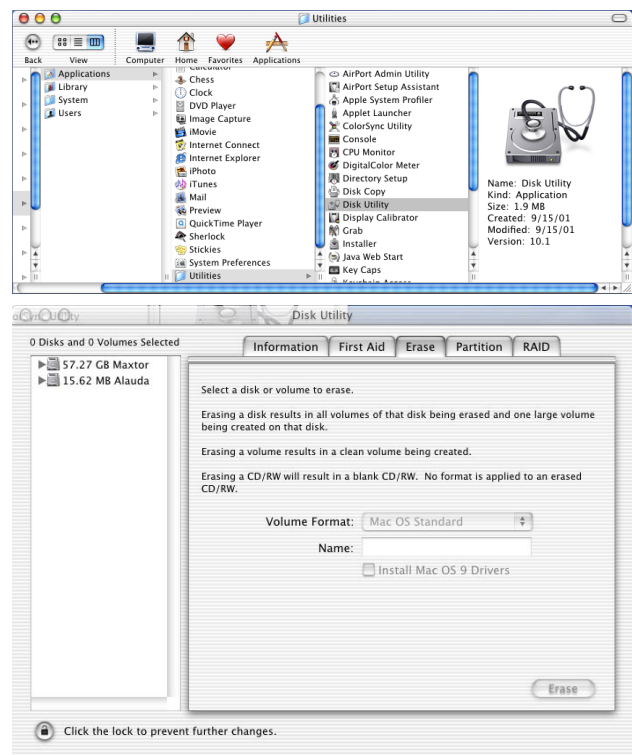
<Mac OS X ♦ Operation>

[Before formatting the card]

- **If a card is going to be used with a digital camera, be sure to format the card with the camera you are using. Cards formatted by the computer using the MAUSB-10 may not be recognized by the digital camera.**
- Formatting a SmartMedia card is not possible when a write-protect seal is affixed to it. (It is not possible to format a SmartMedia card or write, move, or erase data on a SmartMedia card which has a write-protect seal affixed to it. For more details, refer to the SmartMedia card's instruction manual.)
- Formatting erases all data in the card. All important data should be copied to a hard disk or floppy disk in advance.

[Formatting the card for Mac OS X]

1. Select the Macintosh hard disk icon on the desktop.
2. Select "Applications" — "Utilities" — "Disk Utility" — "Erase".
3. Select the icon of the card you want to format.
4. Click the "Erase" button.
 - * Formatting starts.



6 Disconnecting the MAUSB-10

<Mac OS X ♦ Operation>

Close all software programs that are using data on the card (e. g. graphics applications), then follow the steps below.

1. Make sure that the status lamp is NOT on.
 - * If the status lamp is on, **drag & drop** the card icon(s) onto the Trash (⌘ p. 46).
2. Open the card cover and remove the card (⌘ p. 46).
3. Unplug the MAUSB-10 from the computer.

Troubleshooting

Windows

	PROBLEM	CAUSE	SOLUTIONS	REF. PAGE
1	The status lamp (green) does not light.	The card(s) is not inserted correctly.	Make sure that the card(s) is inserted correctly.	12
		The card cover is not closed properly.	Close the card cover properly.	12
		The power supply from the USB port is insufficient.	If you are using a USB hub, it may not function properly with the MAUSB-10. Connect the MAUSB-10 directly to the computer.	5
		The card(s) is damaged.	Replace the card(s) with a new one(s).	—
2	A "Found New Hardware Wizard" window appears when you connect the MAUSB-10.	You have connected the MAUSB-10 before installing the device driver.	Click "Cancel" to close the window, then disconnect the MAUSB-10 from the PC and install the device driver.	9
				18
3	The MAUSB-10 doesn't work even after installing the driver and connecting the MAUSB-10 to the computer.	The PC's USB port is disabled.	Change the USB port settings by selecting [Start] — [Settings] — [Control Panel] — [System] — [Hardware] — [Device Manager] (Cancel the [!] mark to make the USB port available.)	—
		The USB port is disabled in the BIOS settings.	Set the USB port to "Enable" in the BIOS settings, referring to your computer's instruction manual.	—
4	"?" appears in Device Manager. (This is after you have performed all the steps in the "Found New Hardware Wizard" window for connecting the MAUSB-10.)	The MAUSB-10 driver was not installed correctly.	Delete [? USB Media Adapter], then disconnect the MAUSB-10 and install the driver again.	7, 15
				18, 29
5	"Removable Disk" icon (s) does not appear after installation and connection. "!" or "?" appears in Device Manager.	The USB connector is not connected properly.	Fully insert the USB connector.	10
		The MAUSB-10 settings are invalid on your PC.	Change the MAUSB-10 settings by selecting [Start] — [Settings] — [Control Panel] — [System] — [Hardware] — [Device Manager].	—
		The USB port is disabled on your computer.	Change the USB port settings by selecting [Start] — [Settings] — [Control Panel] — [System] — [Hardware] — [Device Manager] (Cancel the [!] mark to make the USB port available.)	—
		The USB port is disabled in the BIOS settings.	Set the USB port to "Enable" in the BIOS settings, referring to your computer's instruction manual.	—
6	The MAUSB-10 does not recognize the card. "Device is not ready." appears.	The card(s) is not inserted correctly.	Make sure that the card(s) is inserted correctly.	12
7	You can read a card, but not write to it.	There is a problem with the card.	Copy the data to a different card, then use the new card for writing.	—
8	You cannot write with a SmartMedia.	A write-protect seal is affixed to the card.	Remove the write-protect seal. For more details, refer to the SmartMedia instruction manual.	15

Troubleshooting

Macintosh

	PROBLEM	CAUSE	SOLUTIONS	REF. PAGE
1	The status lamp (green) does not light.	The card(s) is not inserted correctly.	Make sure that the card(s) is inserted correctly.	36
		The card cover is not closed properly.	Close the card cover properly.	36
		The power supply from the USB port is insufficient.	If you are using a USB hub, it may not function properly with the MAUSB-10. Connect the MAUSB-10 directly to the computer.	5
		The card(s) is damaged.	Replace the card(s) with a new one(s).	—
2	No card icon(s) appears on the computer's screen.	The driver was not installed correctly.	Try to install the driver again, referring to the instructions.	33 41
		The card(s) is not inserted correctly.	Make sure that the card(s) is inserted correctly.	36
		File Exchange is not installed on your computer.	You must have File Exchange (provided with Mac OS) to read/write a DOS/Windows formatted card. (Check Control Panels under the Apple menu to see if File Exchange is installed. For more details, refer to Mac OS "Help".)	32
3	You can read a card, but not write to it.	There is a problem with the card.	Copy the data to a different card, then use the new card for writing.	—
4	You cannot write with a SmartMedia.	A write-protect seal is affixed to the card.	Remove the write-protect seal. For more details, refer to the SmartMedia instruction manual.	38
5	The error message "File Sharing is invalid." appears.	Your card memory is full. (* This error message appears when File Sharing is on.)	Click [OK], then replace the card or delete files on the card to make more space available.	—

Specifications

Supported Cards	SmartMedia	3.3V	4/8/16/32/64/128MB Cards with ID* ¹ (Reading/writing of images on cards with ID is possible)
	xD-Picture Card	3.3V	16/32/64/128MB
Port interface			USB Specification Ver.1.1
Operating voltage			5V ±10% (Powered via USB port)
Power consumption			0.1A Max. (Main unit only)
Operating environment	Temperature	0°C ~ 40°C (41°F ~ 104°F)	
	Humidity	20% ~ 80% (No condensation)	
Storage environment			-20°C ~ 60°C (-4°F ~ 140°F)
Dimensions (L x W x H)	Main unit	105 x 72 x 21 – 26 mm (4.1" x 2.8" x 0.8" – 1.0") (Not including the USB cable)	
Weight	Main unit	120 g (4.2 oz)	
Supported computers			Any of the following computers with a USB interface (USB Ver. 1.1 compatible) and CD-ROM drive* ² <ul style="list-style-type: none"> • PC/AT compatibles • Power Macintosh G3/G4 • Power Book G3/G4 • iMac series • iBook series
Supported operating systems			Any of the following pre-installed operating systems <ul style="list-style-type: none"> • Windows 98 • Windows 98 SE • Windows Me • Windows 2000 Professional • Windows XP • Mac OS 8.6 ~ 9.2 • Mac OS X (v10.1.2 - v10.2.1)

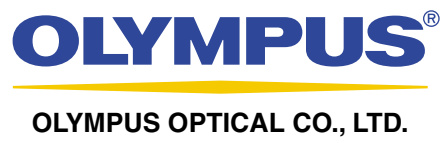
*¹ Some cards with ID are not generally available for purchase. Consult your nearest SmartMedia dealer for details.
(OLYMPUS SmartMedia with ID: 16-128MB)

*² A CD-ROM drive is necessary to install the device driver.

* The specifications in this manual are subject to change without prior notice.
* For the latest information, visit the OLYMPUS web site (<http://www.olympus.com>).

Glossary of Terms

Device Driver (Driver)	A program used to operate or manage a peripheral device (printer, modem, digital camera, USB reader/writer, etc.). Without the proper driver installed, a peripheral device will not be recognized by the computer.
Dialogue	A window that appears on the monitor when the computer requires user confirmation or instructions on what to do. This is also called a Dialogue Box or Dialogue window.
Drag & Drop	A method used to move data (such as text or icons) on the screen. To drag and drop, click and hold the left mouse button over the highlighted selection and move the mouse (drag). Then, release the mouse button over the window where the data is to be copied or moved (drop).
Explore	A file-managing application provided with the Windows OS. Explore allows the user to easily create, move, delete, or copy files and folders. Explore organizes all drives and files/folders and displays them in hierarchical order in a single window.
FAT (File Allocation Table)	A file system used in MS-DOS or Windows to keep track of file locations on a particular volume such as a hard disk. FAT is technically the part of a memory device that contains file-locating information. [Related terms] NTFS (NT File System): A file system supported by Windows 2000/XP. FAT32: A file system supported by Windows 95 OSR 2.0 or later.
File	A group of data, such as a document comprised of text and images.
Folder	A location where files are stored. If a file were compared to a book, a folder would be the shelf that stores the book. Creating a folder inside of a folder allows deeper hierarchical classification.
Format	Determines how data is written to a memory device such as a hard disk or floppy disk. To format, or to initialize, means to erase all existing data in a memory device. When referring to a digital camera, formatting means to allow the memory device to be read/written on the camera. Be aware that each OS uses different formats, and that formatting a memory device will erase the data currently stored on it.
Icon	A small graphical image used to represent a file or folder created by the user or an installed application. Clicking or double-clicking an icon will open the file or folder, or launch the application.
Install	Copies a new application to the computer and automatically configures it for use. [Related terms] Uninstall : Removes an installed application from the computer. Preinstalled : Describes an application already installed on the computer at the time of purchase.
Removable disk	A disk that is not permanently attached to the computer like a hard disk. Examples of removable disks include CD-ROMs, floppy disks, and magneto-optical disks (MO). xD-Picture Card/SmartMedia is treated as a removable disk when inserted in the MAUSB-10.
SmartMedia	A memory device used to store data such as images taken by digital cameras. The MAUSB-10 can be used to transfer data between a SmartMedia and a computer. If a write-protect seal is placed on a SmartMedia, data cannot be written to it.
xD-Picture Card	A memory device used to store data such as images taken by digital cameras. The MAUSB-10 can be used to transfer data between an xD-Picture Card and a computer.
Taskbar	A bar that displays all running files and applications as buttons in Windows. Normally, it is displayed at the bottom of the screen. Clicking a button on the taskbar can bring up a window or launch an application. The taskbar also includes other functions such as a clock, as well as a Start button that organizes applications so they can be launched more easily.
USB (Universal Serial Bus)	An interface that connects computers with peripheral devices (printers, modems, digital cameras, etc.). The USB interface is becoming increasingly common thanks to its ease of use, which makes it more likely to be the standard interface in the future.



Free Manuals Download Website

<http://myh66.com>

<http://usermanuals.us>

<http://www.somanuals.com>

<http://www.4manuals.cc>

<http://www.manual-lib.com>

<http://www.404manual.com>

<http://www.luxmanual.com>

<http://aubethermostatmanual.com>

Golf course search by state

<http://golfingnear.com>

Email search by domain

<http://emailbydomain.com>

Auto manuals search

<http://auto.somanuals.com>

TV manuals search

<http://tv.somanuals.com>