

OLYMPUS®

CAMEDIA

DIGITAL COLOR PRINTER P-200

Installation Guide

- This Installation Guide explains how to install and use the Olympus P-200 Digital Printer software for Windows 95/98/Me.
- Keep this manual booklet in an easily accessible place for future reference.

User Registration

- It is prohibited by copyright laws to duplicate this software and installation guide in whole or in part, or to lease the software to a third party without permission from the copyright owners.
- Olympus assumes no liability for any damages, loss of profit and any claims from third parties resulting from the use of this software.
- If this software contains any manufacturing defects, Olympus will replace it.
However, Olympus assumes no liability for any defects not related to manufacturing.
- This software can only be used on designated equipment.
- For the purpose of improvement, the specifications of the software may be subject to change without notice.

Program ©2000 OLYMPUS OPTICAL CO., LTD. and its licensors

Program ©2000 Justway Co., Ltd.

- Windows 95, Windows 98, and Windows Me are registered trademarks of Microsoft Corporation in the United States of America and other countries.
- IBM and PC/AT are registered trademarks of International Business Machines Corporation.
- Other brand names and product names are registered trademarks or trademarks of their respective owners.

The ™ and © marks are omitted in the text of this booklet.

Table of Contents

System Requirements	4
Installing the Software.....	5
Easy installation	
(plug & play).....	5
Manual installation	7
Uninstallation	9
For high-speed operation.....	9
Printing	10
To cancel printing.....	12
Tips for printing	13
Split Print.....	14
Adjusting the Image Quality	16
Troubleshooting Guide.....	17

System Requirements

The following hardware and software are required to install and run this software.

- ❑ **Computer:** IBM PC/AT compatible machine with an i486SX or better CPU running Windows 95, 98 or Me (Pentium or better CPU recommended).
- ❑ **Memory:** 8 MB minimum (32 MB or more recommended, depending on the application to be printed).
- ❑ **Hard disk:** Minimum 15 MB free (Recommendation: 30 MB or more). More space is required for larger images or multiple-page files
- ❑ **Display:** Minimum 256-color graphics capability (Recommendation: 32,000 colors or more).
- ❑ **Disk drive:** Floppy disk drive (required for installation).

Notes

- This software may be upgraded without notice.
- The screen images shown in this booklet may differ slightly from the actual screen images displayed by the software.
- The latest information about this software is recorded in the "Readme.txt" file on the provided floppy disk. Be sure to read this file.

Installing the Software

Install the Windows 95/98/Me printer driver software on the provided floppy disk in your PC. This description uses a PC running Windows 98 as an example.

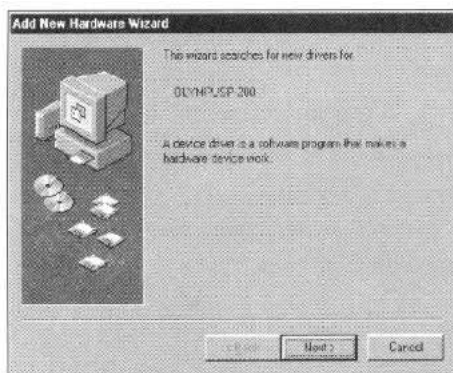
Easy installation (plug & play)

1 Connect the printer to your PC.

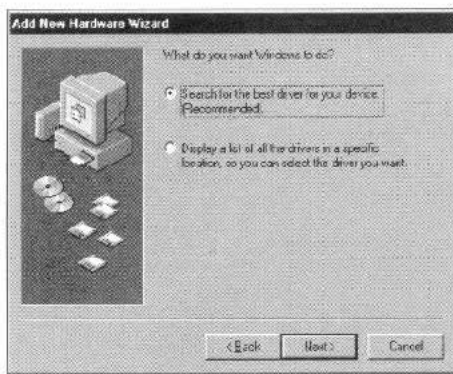
Please refer to the printer's instruction manual for details on connecting the printer to your PC.

2 Turn on the printer and the PC. Launch Windows.

The [Add New Hardware Wizard] dialog box appears. Click [Next] to continue.

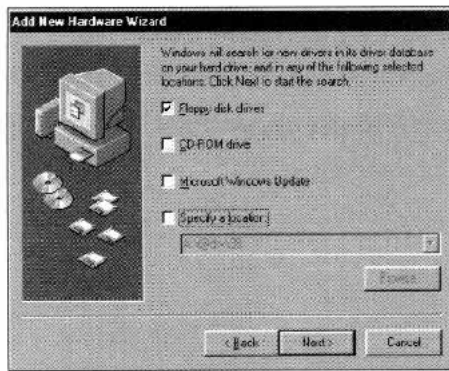


3 Select [Search for the best driver for your device] and click [Next].



4 Insert the floppy disk into the PC's floppy drive.

Select [Floppy disk drive] and click [Next].

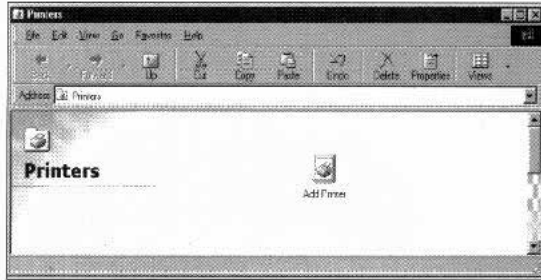


5 Follow the on-screen instructions.

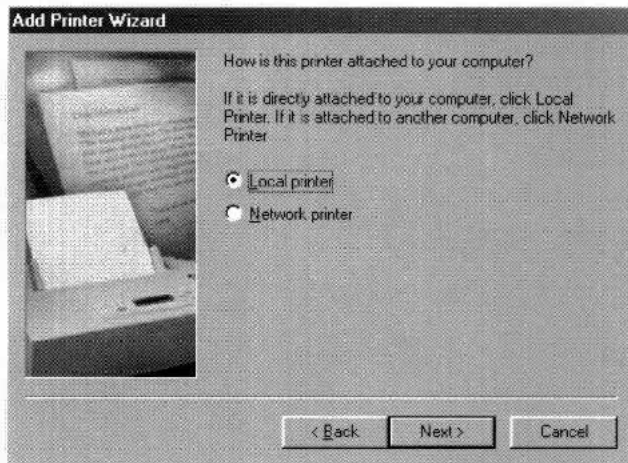
Manual installation

- 1 Click the [Start] button of Windows, point [Setup] and click [Printer].
- 2 Double-click the [AddPrinter] icon.

The [Add Printer Wizard] dialog box appears.



- 3 Select [Local printer] as the printer connection destination.

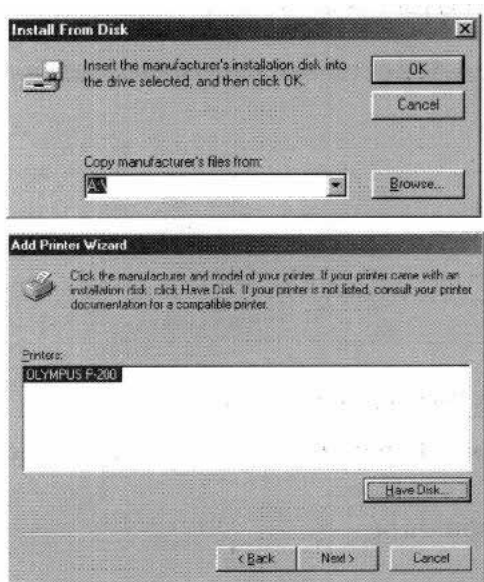


Olympus does not guarantee that this printer will operate correctly on a network. The printer should be connected directly to the PC.

4 Insert the floppy disk into the PC's floppy drive and select [Use disk].

Set the floppy disk drive as the [Copy source of distributed file.]

The drive name of the floppy disk drive varies depending on the setup of each PC. Check your PC's instruction manual if you are not sure.



When you find the file, go on to the next step.

5 Set [LPT1: Printer port] as the port to be used by the printer.

6 Select whether the printer is used as the default printer or not.

7 Click [End] to complete installation.

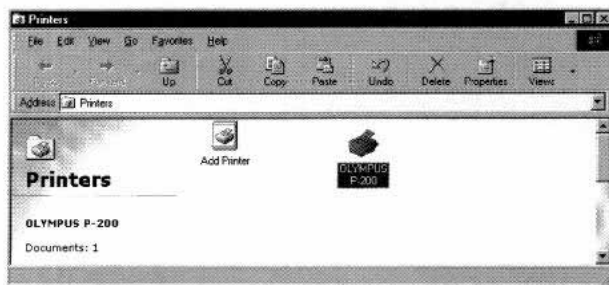
Note

- When "Insert Windows CD-ROM (or floppy disk)" is displayed during installation, insert the specified CD-ROM or applicable floppy disk in the PC and click [OK], The required file will be installed automatically. If Windows setup is started when the Windows CD-ROM is inserted, cancel the Windows setup. The installation of the printer driver will continue.

Uninstallation

When the printer driver software is no longer necessary, uninstall it as described below.

- 1 Click the [Start] button of Windows, point [Setup] and click [Printer].
The [Printer] window appears.
- 2 Click the [OLYMPUS P-200] icon.



- 3 In the [File] menu, click [Delete].
- 4 Uninstall the printer driver by following the on-screen instructions.

For high-speed operation

To use the printer at a high speed, we recommend the printer port be used in the ECP mode. This will reduce the data transfer time from the PC.

To switch to the ECP mode, BIOS setup is required. The setup method varies depending on the PC. Please refer to your PC's instruction manual for BIOS setup.

Notes

- Data transfer time varies depending on PC.
- Some printers are not compatible with the ECP mode. Take care when using more than one printer.

Printing

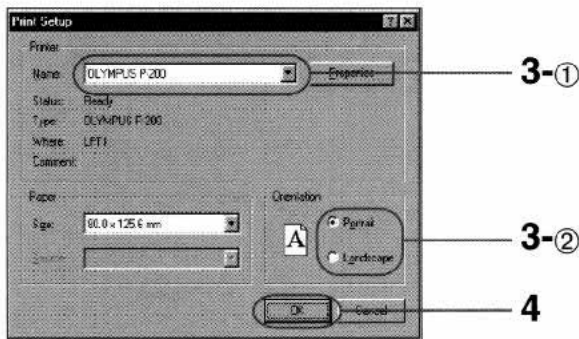
You can print images created using commercially available image processing or retouching applications using this printer driver software.

1 Run the application and open the images you want to print.

- Set the image size to 1280 x 960 pixels or less for printing, image processing or retouching. If you are using an application that also allows you to specify image resolution as well as image size, set the resolution to 320 dpi. For details on how to make these settings, refer to the application's user manual.
- The image size is automatically set when printing is performed using the digital camera utility, etc.

2 In the application [File] menu, click [Printer Setup]

3 Set up the printer in the [Printer Setup] dialog box.



- The dialog box shown above is an example using the Olympus CAMEDIA Master 2.0 application. The contents of dialog box vary depending on the application you are using.

① Set [OLYMPUS P-200] as the printer name.

② Set the print orientation to [Portrait] when the image is longer vertically than horizontally, or to [Landscape] when it is longer horizontally.

Continued on next page

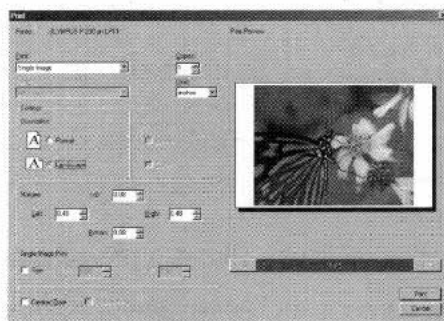
4 Click [OK] to close the [Printer Setup] dialog box.

5 In the [File] menu, click [Print].

The [Print] dialog box appears.

6 Set the number of prints [Copies].

The print copies can be set up to 25.



- The dialog box shown above is an example using the Olympus CAMEDIA Master 2.0 application. The contents of dialog box vary depending on the application you are using.

7 Click [Print].

The images will be printed.

Note

- The auto power off function automatically turns the printer OFF if it has not been used for an hour.

Before you start printing, check that the printer has not turned OFF automatically.

Other printing-related operations

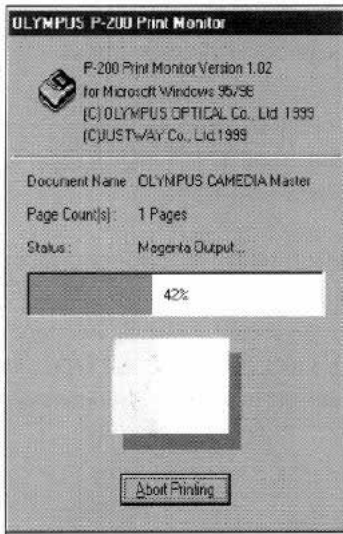
Split printing, see page 15.

Image quality adjustment, see page 17.

To cancel printing

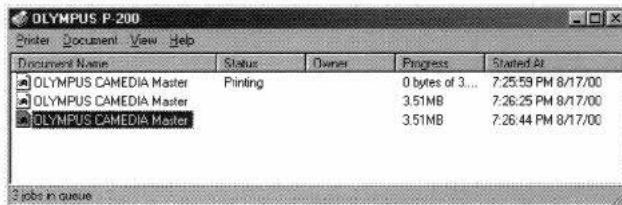
When the print monitor is displayed:

Click [Cancel printing].



When data is left in the Windows printer spooler:

- 1 Click the [Start] button.
- 2 Point [Setup] and click [Printer].
- 3 Double-click [OLYMPUS P-200] to open the [OLYMPUS P-200] window.
- 4 Click the name of the queued document you want to cancel.



- 5 Click [Document] in the menu, then click [Cancel printing]. For details, please refer to the Windows instruction manual.

Tips for printing

To get the best printing results, be sure to read the instruction manual of the application you are using. Information on how to change the resolution and image size is especially important. In addition, read the following tip.

Print in an environment with as large color display capability as possible.

The number of available colors of some applications is determined according to the display color setting of the PC used in printing. To print the best images possible, it is recommended to print from a system capable of displaying 64000 colors or 16.77 million colors if possible.

Adjust the image size and resolution (with an application that prints images according to the resolution of the printer).

If the application in use is capable of adjusting the image resolution and size, set the resolution to 320 dpi and the size to 1280 x 960 pixels or smaller. (If the image size in pixels is larger, the image may be printed on more than one sheet of print paper.)

Split Print

You can split a sheet of print paper into multiple planes and print the same image on each of them.

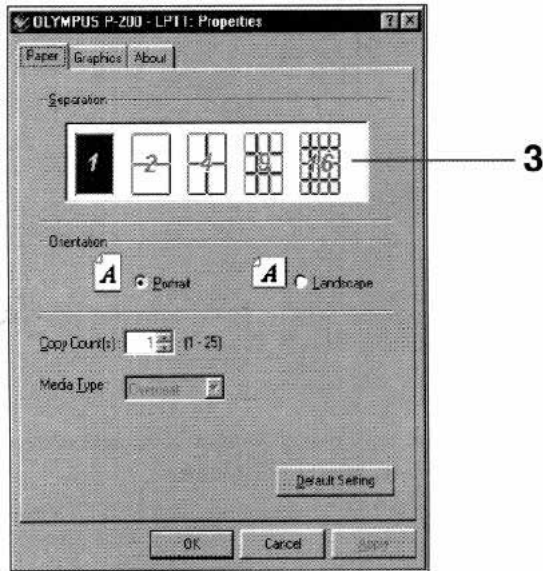
- 1 In the [File] menu of the application, click [Print].

The [Print] dialog box appears.

- 2 Click [Properties].

[OLYMPUS P-200-LPT1: Properties] appears.

- 3 Set the split method in the [Paper] sheet.

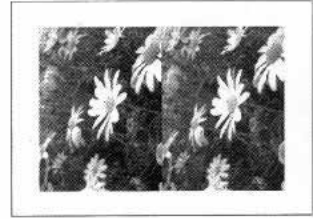


Images can be printed in one of the following split methods.

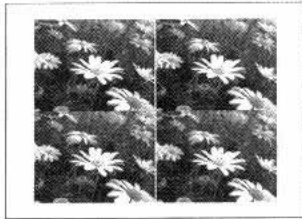
Single



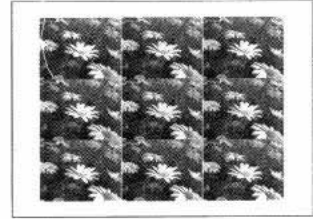
2-split print



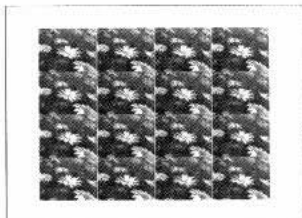
4-split print



9-split print



16-split print



To obtain correct split prints (with an application that prints images according to the resolution of the printer):

Set the resolution to 320 dpi and image size to 1280 x 960 pixels.

Please refer to the instruction manual of the application you are using for more information on settings.

Note

- Print preview is not available.

Adjusting the Image Quality

You can adjust the brightness, depth, contrast and sharpness of an image for printing.

- **Brightness:** Brightness is adjusted across the entire image plane. Image brightness increases when adjusted in the + direction.
- **Depth:** Adjusts the color intensity of the image. Color intensity is increased when adjusted in the + direction.
- **Contrast:** Increases or reduces image contrast. Contrast (crispness) increases when adjusted in the + direction.
- **Sharpness:** Emphasizes or de-emphasizes image contours. Image contours are emphasized when adjusted in the + direction.

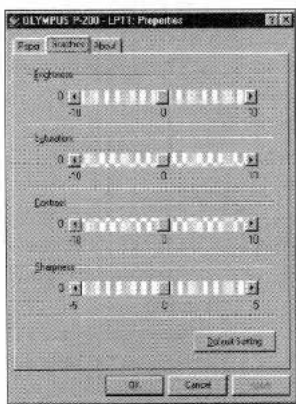
1 In the [File] menu of the application, click [Print].

The [Print] dialog box appears.

2 Click [Properties].

[OLYMPUS P-200-LPT1: Properties] appears.

3 Set the image quality in the [Color adjustment] sheet.



- ① [Brightness], [Depth] and [Contrast] each can be adjusted in 21 steps between -10 and +10.
- ② [Sharpness] can be adjusted in 11 steps between -5 and +5.
- ③ To return to the default settings, click [Standard]. The default value is 0 for all settings.
- ④ To cancel image quality adjustment, click [Cancel]. The [Print] dialog box appears again.

Caution

- If your image processing application has image adjustment capabilities similar to those described above, the image quality should be adjusted with the application instead of the driver software. If the image quality is adjusted in both the application and driver software, print results may differ from what you expect.

Troubleshooting Guide

To solve problems you may experience with the printer driver, check the troubleshooting guide before calling for service. If the problem persists, contact your dealer for information what to do next. Please also refer to the Instruction manual provided with the printer.

Symptom	Cause	Treatment
An image is printed on several sheets.	① The resolution or image size setting is incorrect.	① Set the resolution to 320 dpi and image size to 1280 x 960 pixels or less.
Printed image contains zigzag lines.	① The image may have been enlarged before printing.	① Set the resolution to 320 dpi and image size to 1280 x 960 pixels or less.
Printing will not start.	<p>① No print paper is loaded, the ink ribbon has run out, or paper is jammed, etc.</p> <p>② Certain PCs and applications take a long time to compile print data. Printing multiple sheets with complicated settings also takes long time.</p> <p>③ There may be a problem with the digital color printer.</p> <p>④ There may not be enough free space on the hard disk.</p>	<p>① Check the indicators on the top panel of the printer and load print paper if required. Also refer to the instruction manual of your printer.</p> <p>② Please wait until the PC completes print processing.</p> <p>③ Check the indicators on the top panel of the printer and error messages on the PC monitor screen. When the printer and PC are normal and printing still has not started 5 minutes after initiation, turn the printer OFF then ON again and retry printing. Note that printing of multiple sheets may take more than 5 minutes for preparation.</p> <p>④ Check the hard disk capacity. If it is insufficient, create more free space.</p>

Symptom	Cause	Treatment
PC operation is unstable.	① The PC's memory may not have enough free memory.	① If more than one applications is open, close all unnecessary applications before printing. ② In the printer property dialog box, set the spool setting to [Send data directly to printer] before printing.
Installation from floppy disk is impossible.	① There may not be enough free space on the hard disk.	① Check the hard disk capacity. If it is insufficient, create more free space.

- All contents of this manual are subject to change without notice.
- All specifications and designs are subject to change without notice.
- OLYMPUS shall assume no responsibility for any problems caused by this product. OLYMPUS shall also assume no responsibility for any accidental or consequential damages (including lost business benefits, suspended business activities, and lost information) caused by use or malfunction of the product, even if the damages are possibly attributable to the product. When filing for damages, the user cannot claim compensation higher than the cost for which he/she purchased the product, even if the damages result from breach of contract, illegal operations (including errors), and problems with the product's reliability.

OLYMPUS®

OLYMPUS OPTICAL CO., LTD.

San-Ei Building, 22-2, Nishi Shinjuku 1-chome, Shinjuku-ku, Tokyo, Japan.
(Customer support) Tel. 0426-42-7499 Tokyo
<http://www.olympus.co.jp>

OLYMPUS AMERICA INC.

Two Corporate Center Drive, Melville, NY 11747-3157, U.S.A. Tel. 631-844-5000
(Customer support) Tel. 1-888-553-4448
<http://www.olympus.com>

OLYMPUS OPTICAL CO. (EUROPA) GMBH.

(Premises/Goods delivery) Wendenstraße 14-16, 20097 Hamburg, Germany. Tel. 040-237730
(Lelters) Postfach 10 49 08, 20034 Hamburg, Germany.
<http://www.olympus-europa.com>

OLYMPUS®

CAMEDIA

P-200

Digital Color Printer

Instructions

- Thank you for purchasing this Olympus digital color printer.
- Before using this product, read this manual carefully to ensure correct use.

Owner's Record

The model and serial numbers are located at the rear. Record the serial number in the space provided below. You will need to refer to these numbers whenever you call your dealer regarding this product.

Model No. P-200

Serial No. _____

Declaration of Conformity

Trade Name: OLYMPUS
Model No.: P-200
Responsible Party: OLYMPUS AMERICA INC.
Address: 2 Corporate Center Drive, Melville, New York 11747-3157, U.S.A.
Telephone No.: 631-844-5000

This device complies with Part 15 of the FCC Rules. Operation is subject to the following two conditions: (1) This device may not cause harmful interference, and (2) this device must accept any interference received, including interference that may cause undesired operation.

Table of Contents

Introduction.....	4
Precautions	4
Safety precautions	5
Care and storage.....	10

Getting Started

Unpacking the printer.....	11
What you can do with the P-200 digital color printer.....	12
Identifying the parts.....	13

Setup

Setting up the printer	15
Connecting the power supply	15
Using print packs.....	17
Loading the ink ribbon cartridge	18
Handling the ink ribbon cartridge.....	20
Loading print paper	21
Loading print paper in the paper feed cassette.....	21
Installing the paper feed cassette onto the printer.....	22

Basic Printing

Printing images recorded on the card (SmartMedia or CompactFlash).....	23
Preparation.....	23
Opening the card cover	24
Inserting the card into the printer's slot.....	24
Printing.....	27

Other Printing Functions

Making split prints	31
Making split prints of the same image.....	31
Index print.....	32
Printing all recorded images in a SmartMedia or CompactFlash card ...	34
Printing DPOF-reserved images.....	36
Printing the date	37
Adjusting the sharpness	39

For Your Information

Troubleshooting.....	40
If indicators light or blink	41
If print paper is jammed.....	42
About the ink ribbon cartridge and print paper.....	44
Specifications.....	45
FCC notice	46
Accessories.....	47
Print index	48

Introduction

Thank you for purchasing this OLYMPUS digital color printer.

Read this manual and warranty carefully. Keep them handy for future reference and when requesting service.

Make sure that the date of purchase and dealer's name are included on your warranty.

Precautions

Before using the printer, read the safety precautions on pages 5 through 9. Always follow these precautions to ensure safe and proper handling and operation of your printer. Keep this manual handy for future reference.

Duplication restrictions

If duplicating documents with the printer, pay special attention to the following.

- Duplication of bank notes, coins, or securities is against the law.
- Duplication of blank certificates, licenses, passports, private securities or unused postal stamps is also against the law.
- Paintings, photographs, and books under copyright cannot be duplicated without permission of the copyright holder, unless you use the duplications for private purposes.



Notes for illustrations used in this manual

Illustrations in this manual are for explanatory purposes only. They may differ from what is actually displayed or printed.

Safety precautions

It is dangerous to tamper with the printer because this could cause fire or electric shock, possibly resulting in death or serious injury. Before use, read the safety precautions carefully and follow them for proper handling.

This manual uses the following icons to indicate hazardous situations.

Icon	Description
 WARNING	Indicates a hazardous situation that, if not avoided, may cause fire or electric shock, possibly resulting in death or serious injury.
 NOTE	Indicates a hazardous situation that, if not avoided, may cause electric shock or other accidents, possibly resulting in minor injury and/or property damage.

WARNING

- **If anything abnormal occurs with the printer, unplug the power cord and remove the optional rechargeable battery.**

If the printer emits smoke, unusual smells, or strange sounds, turn off and unplug the printer and remove the optional rechargeable battery to prevent fire or electric shock. Then contact your dealer.

- **Should any liquid or foreign objects get into the printer, unplug the power cord and remove the optional rechargeable battery.**

Do not allow any liquids, metals, or inflammable objects to get into the printer through the vent. This may cause fire or electric shock. Turn off and unplug the printer, and remove the optional rechargeable battery. Then contact your dealer.

- **If the printer cabinet is damaged, unplug the power cord and remove the optional rechargeable battery.**

Using the printer when the cabinet is damaged may cause fire or electric shock. Turn off and unplug the printer, and remove the optional rechargeable battery. Then contact your dealer.

- **If the power cord is damaged, unplug it.**

A damaged power cord may result in fire or electric shock. Turn the printer off and unplug the power cord. Be careful not to touch any exposed wires. Then contact your dealer.

WARNING

■ **Do not damage the power cord.**

A damaged power cord may result in fire or electric shock.

To prevent the cord from being damaged,

DO NOT:

Jerk the cord to pull it out.

Bend the cord excessively.

Heat the cord.

Place heavy objects on the cord.

Rewire the cord.

If the power cord is damaged, contact your dealer.

■ **Do not disassemble or modify the printer.**

The printer has both hot and high voltage parts on the inside. To prevent an electric shock or printer malfunction, do not attempt to disassemble or modify the printer. For service or repair, contact your dealer.

■ **Do not place liquids on the printer.**

If liquid gets into the printer, it may result in fire or electric shock.

■ **Do not place heavy objects on the printer.**

Doing so may deform the printer cabinet, resulting in fire or electric shock. If the printer falls or is dropped, it may be damaged.

■ **Do not install the printer in the following places.**

To prevent fire, electric shock, and printer malfunction, do not install the printer in the following places.

- **Dusty, humid, or oily places**

Should any dust or liquid get into the printer, it may result in fire or electric shock.

- **Extremely hot places**

Do not expose the printer to direct sunlight (for example, inside a car and on the dashboard) or extremely high temperatures (near a heater, for example). Doing so may deform the printer cabinet, resulting in fire or electric shock.

Use the printer in an environment with an ambient temperature between 41 to 95°F (5 to 35°C) and humidity of 20 to 80%.

WARNING

■ **Do not use the printer in the following places.**

- Unstable or inclined surfaces.
- Places exposed to dust and other particles (such as outdoors, particularly on a beach).
- Places subject to rain and water drops, or enclosed places where condensation could occur such as inside a plastic bag.

■ **Do not use the printer with a power supply other than that specified.**

Incorrect voltage may damage printer parts, possibly resulting in fire or electric shock.

■ **Connect the power cord correctly.**

For example, if the power cord is plugged in loosely, it may cause a fire or electric shock. Push the plug all the way into the outlet.

■ **Make sure that excessive dust and foreign matter do not accumulate on the power cord.**

Dust and foreign matter conduct electricity, which can cause fire and electric shock. If excessive dust and foreign matter accumulates on the cord, unplug the cord and clean it.

■ **Immediately unplug the power cord when an electric storm starts outside.**

The induced electricity from storms may cause fire, electric shock, or printer malfunction.

■ **Do not hold the power cord plug with wet hands.**

Doing so may cause an electric shock. Be sure your hands are dry before handling.

■ **Do not overload the power outlet.**

This printer should be plugged into a separate 110-120 V AC, 60 Hz circuit. If the printer is on a circuit with other appliances, an overload may cause fire or electric shock.



WARNING

■ **Observe the following when using the optional B-200NH rechargeable battery.**

- Never disassemble, destroy or short-circuit the battery, or throw it in a fire. Doing so may cause an explosion.
- To recharge the battery, mount it on the printer.
- If recharging does not finish even though specified recharging time (3 hours) has been exceeded, unplug the power cord to interrupt recharging.
- While the battery is being recharged, do not unplug the power cord. Insufficient recharging may cause the battery service life to be reduced.
- Use the battery correctly; otherwise, an explosion may result.
- Note that the battery may generate heat when it is being recharged or right after recharging is complete.
- Dispose of the used battery according to local regulations.
- For details, refer to the instruction manual of the optional rechargeable battery.

 **NOTE****■ Do not block the vent.**

Doing so may cause the printer to heat up, possibly resulting in fire or electric shock.

- Do not block the vent.
- Do not put the printer in the following places.
 - Place with poor ventilation
 - On a soft surface like a rug or bed

■ Do not put the printer on an unstable surface such as a shaky table.

If the printer falls, it may injure someone. This could also damage the printer or cause the printer to malfunction.

■ Do not touch the non-user-serviceable parts inside the printer.

Doing so may cause injury or burns. This applies especially to children and those unfamiliar with the printer.

■ Do not move the printer when the power cord is taut.

Doing so may damage the cord, possibly resulting in fire or electric shock. When moving the printer, unplug and bundle the power cord.

■ Do not pull the cord with a jerk.

To unplug the power cord, hold it by the plug. Pulling on the cord may damage it, possibly resulting in fire or electric shock.

■ Unplug the power cord from the power outlet before cleaning the printer.

Accidentally touching a non-user-serviceable part may cause electric shock.

■ Unplug the printer if it will not be used for an extended period of time (for example, while you away on a long trip.)

Otherwise, deteriorated insulation or leakage current may cause fire or electric shock.

■ Remove the optional rechargeable battery if the printer will not be used for an extended period of time.

Otherwise, fluid leakage may occur.

■ When the optional rechargeable battery is not installed, mount the rear cover.

Care and storage

■ Beware of moisture condensation.

Moisture condensation means that water vapor in the air becomes liquid and sticks to the printer surface. This phenomenon is caused by the following.

- Rapidly heating the room in which the printer is placed
- Cool air (from an air conditioner, etc.) blown directly at the printer
- Moving the printer from a cold place to a warm place

Moisture in the air will condense on the paper, deteriorating print quality or causing paper jams.

Under conditions where moisture condensation has occurred or may occur, do not operate the printer until it is dry or until there is no possibility that condensation will occur.

■ Do not spray volatile solvent on the printer or allow the printer to be in contact with rubber or plastic products for an extended period of time.

For example, spraying an insecticide on the printer or wiping it with thinner or benzine may deteriorate or discolor the printer cabinet. Such deterioration and discoloring also occurs if the printer is in contact with rubber or plastic products for an extended period of time.

■ Operate the printer at least once every six months.

If the printer is not used for an extended period of time, it may malfunction. Operate the printer at least once every six months.

■ Carry the printer with both hands.

When lifting or carrying the printer, use both hands.

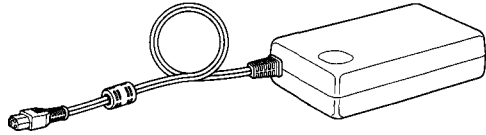
■ Transport the printer carefully.

When transporting the printer, place it in the original box with the original packing material. If you don't have the original packaging, pack the printer with enough cushioning material to absorb any impacts during transportation. Be sure to remove the SmartMedia, CompactFlash and automatic feeder from the printer.

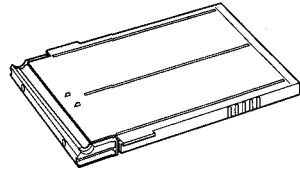
Unpacking the printer

Make sure that the following accessories are supplied with your printer. If you are missing any of these accessories, contact your dealer immediately.

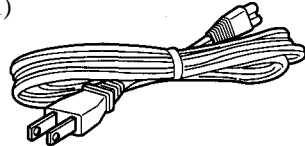
- E2AC AC power adapter (1)



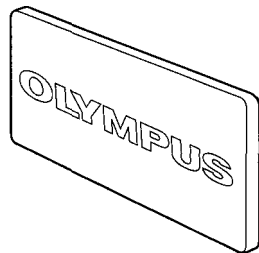
- Paper feed cassette (1)



- CB-200UC power cord (1)



- Rear cover (installed to the printer body)



- Sample kit [Ink ribbon cartridge (1) and standard paper (25 sheets)]
- Instruction manual (1)
- Limited warranty card (1)

What you can do with the P-200 digital color printer

Easy printing of images recorded in SmartMedia or CompactFlash

You can print images from SmartMedia or CompactFlash recorded with Olympus digital cameras.

Making a variety of prints

You can make a variety of prints including split prints with multiple images on a single sheet and index prints showing up to 30 recorded images on a single sheet. You can also print images with the date or adjust the contour sharpness of printed images.

Printing of images from a PC

The P-200 can be connected to a PC and print images stored in the PC using the optional P-200 connection kit. (For details on printing images from a PC, refer to the Installation Guide provided with the optional P-200 connection kit.)

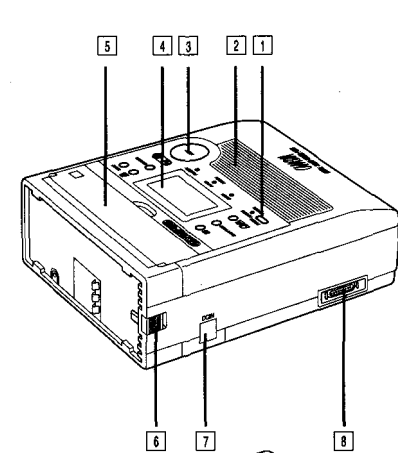
High-quality overcoated prints

The standard print paper is coated with high-quality overcoating featuring excellent storability and durability to preserve important pictures for an extended period.

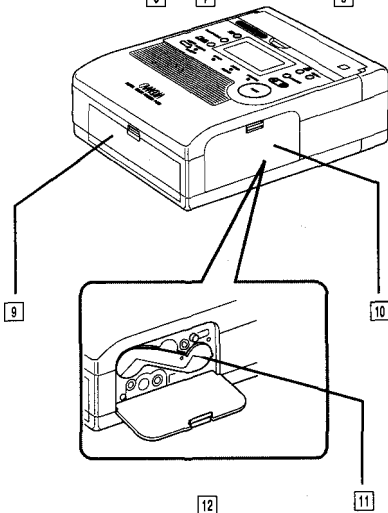
25-sheet continuous printing

The supplied paper feed cassette can supply up to 25 sheets of print paper continuously to the printer.

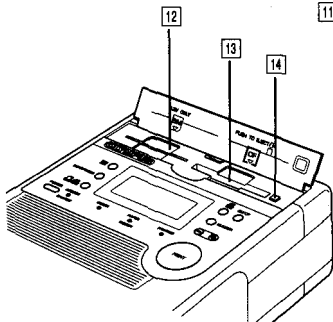
Identifying the parts



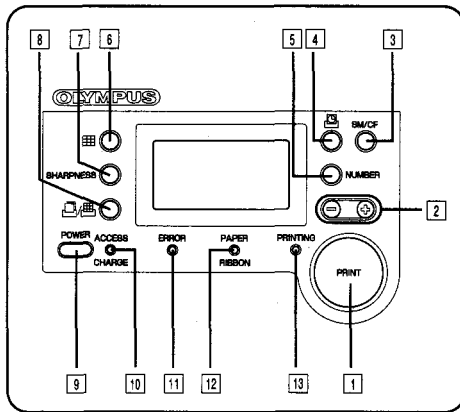
- 1 POWER button
- 2 Cooling fan window
- 3 PRINT button
- 4 Control panel
- 5 Card cover
- 6 Rechargeable battery unlock lever
- 7 DC power input connector
- 8 IEEE1284 26-pin parallel interface connector



- 9 Paper feed cassette compartment cover
- 10 Cartridge compartment lid
- 11 Ink ribbon cartridge

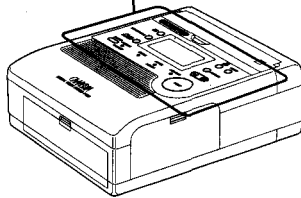


- 12 SmartMedia slot
- 13 CompactFlash slot
- 14 EJECT button



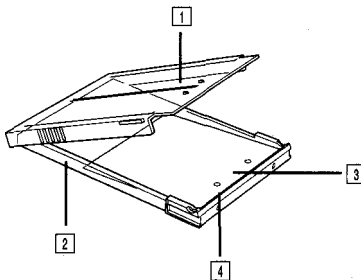
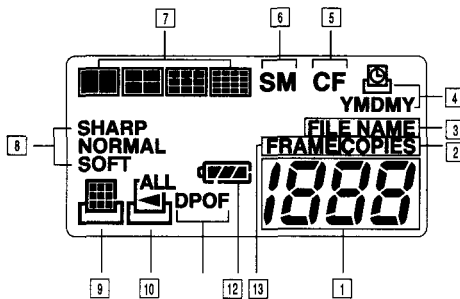
Operation Panel

- 1 PRINT button
- 2 (+) and (-) buttons
- 3 SmartMedia/Compact Flash button
- 4 DATE button
- 5 NUMBER button
- 6 SPLIT button
- 7 SHARPNESS button
- 8 PRINT MODE button
- 9 POWER button
- 10 ACCESS/CHARGE indicator
- 11 ERROR indicator
- 12 PAPER/RIBBON alarm indicator
- 13 PRINTING indicator



Control Panel

- 1 Frame Number/File name/Number of print copies display (Displays the data for 2, 3 or 13.)
- 2 Number of print COPIES indicator
- 3 FILE NAME indicator
- 4 Date indicator
- 5 CompactFlash indicator
- 6 SmartMedia indicator
- 7 Split print indicators
- 8 Sharpness indicator
- 9 Standard print/index print indicator
- 10 ALL-frame print indicator
- 11 DPOF indicator
- 12 Battery power indicator
- 13 FRAME number indicator



Paper Feed Cassette

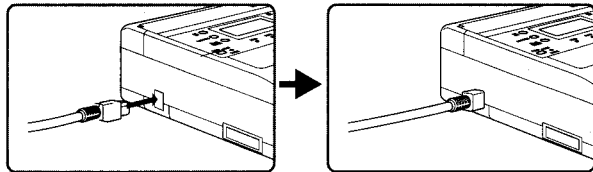
- 1 Top case
- 2 Bottom case
- 3 Pressure plate
- 4 Paper feed guide

Setting up the printer

Connecting the power supply

To supply power from the provided AC adapter

1. Plug the printer power cord into the AC adapter.
2. Plug the AC adapter power cord into a wall outlet, then plug the other end of the printer power cord into the printer's DC power input connector.
3. Press and hold the POWER button for more than 1.5 seconds.
4. The printer turns ON with a beep tone, and the control panel is displayed.
5. To turn the printer OFF, press and hold the POWER button for more than 1.5 seconds. The control panel will turn off and the printer turns OFF with a short beep.



- If you want to use the AC adapter as the power supply to the printer, remove the rechargeable battery if possible. This will help prevent deterioration of the rechargeable battery.
- If the printer power cord is accidentally unplugged from the printer during printing, turn the printer OFF, plug the printer power cord into the printer's DC power input connector, and then turn the printer ON again. Leaving the printer unplugged in printing mode may cause it to malfunction.

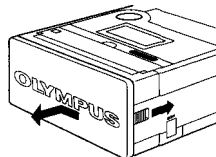
Notes

- Recharging time varies depending on the remaining battery power and environmental conditions.
- Even when the battery is installed, it is not recharged while the printer is set to ON. Recharging only takes place when the printer is OFF.
- Once you started recharging, it is recommended that you fully recharge the battery without interruption. (Do not turn the printer ON or OFF during recharging.)
- When a fully discharged battery is recharged, a pre-charging period of up to 1 minute takes place before the ACCESS/CHARGE indicator lights up. (The indicator does not light in the pre-charging period.)

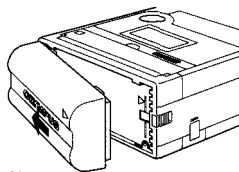
To supply power from the optional rechargeable battery

1. Installing the battery

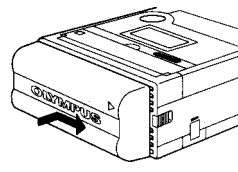
- 1) Turn the printer OFF and unplug the AC adapter power cord.
- 2) Remove the rear cover.



- 3) Position the battery so that the ▷ marking on the battery points in the same direction as the one on the printer. Align the battery with the printer as shown in illustration 3), then push the entire battery toward the printer.
- 4) While pushing the battery against the printer, slide the battery toward the battery unlock lever until it clicks.



3)



4)





2. Recharging the battery

- 1) Connect the AC adapter.
- 2) The ACCESS/CHARGE indicator lights to indicate that recharging has started.
- 3) Recharging takes about 2.5 hours. The ACCESS/CHARGE indicator turns off when recharging is complete.

3. Battery power operation

- 1) Disconnect the AC adapter from the printer and turn the printer ON.
 - When the AC adapter is connected, the printer is always powered by the AC adapter.
 - The control panel shows the remaining battery power.

4. Remaining battery power indication

- The remaining battery power is indicated for 12 seconds after the printer is turned ON and during printing.
- The remaining battery power indicator segments light according to the following.
 -  lights (turns off automatically): The battery is fully charged. You can print.
 -  lights (turns off automatically): The remaining battery power is sufficient. You can print.
 -  lights (turns off automatically): The remaining battery power is too low. A few pages may be printed but battery power may run out before printing is complete.
 -  lights: No remaining battery power. Turn the printer OFF and recharge the battery.

5. Removing the battery

- Turn the printer OFF and make sure that the AC adapter is not connected.
- Slide the battery unlock lever toward the paper feed cassette position (by about 2 mm), then remove the battery by sliding it in the opposite direction from when it was installed.
- Install the rear cover in the same way as installing the battery. Store the removed battery with the provided cover installed to it.

Using print packs

Notes

- Always use the ink ribbon cartridge and print paper supplied together in the same carton.
- Do not print on used print paper.

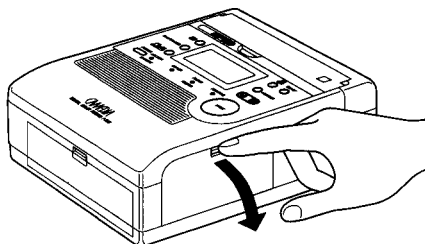
You need the provided sample kit or an optional print pack (set of ink ribbon cartridge and print paper) for printing.

Purpose (Printing)	Print Pack	Print Paper	Ink Ribbon Cartridge
Standard	P-25N	Standard	For 25 prints

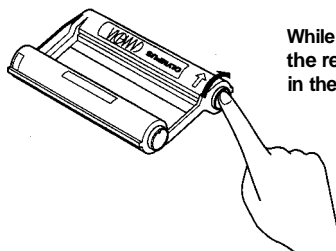
Loading the ink ribbon cartridge

Always use the ink ribbon cartridge and print paper supplied together in the same carton.

- 1 Open the cartridge compartment lid of the printer by pushing down the tab on the cartridge compartment lid.

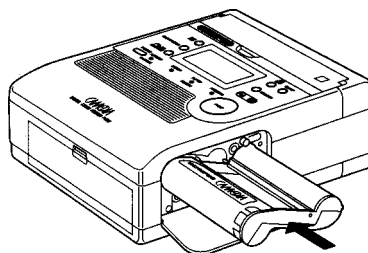


- 2 Wind the ink ribbon to remove the slack.



While pressing the center of the reel, wind the ink ribbon in the direction of the arrow.

- 3 Insert the ink ribbon cartridge all the way into the compartment and close the compartment lid firmly.



- Close the cartridge compartment lid while pushing the ink ribbon cartridge with the lid.

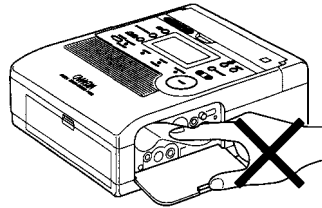
Note

- When using the ink ribbon cartridge compartment for the first time, remove the head protection sheet from the inside.

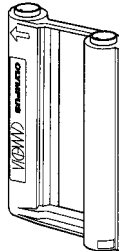
If the cartridge compartment lid does not close:
Remove the ink ribbon cartridge, and then re-insert it.

Cautions

- The cartridge compartment may become very hot during or after operation. Do not insert your finger or hand inside the cartridge compartment.



When placing an ink ribbon cartridge on something, stand it on its side to avoid deposition of dust on the ink ribbon. If your touch the ink ribbon or leave it in a place with excessive dust, fingerprints or dust may make clear printing impossible.

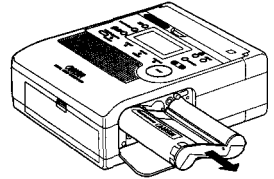
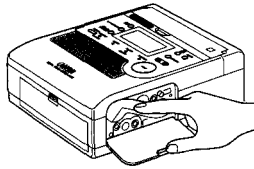




Handling the ink ribbon cartridge

To replace an ink ribbon cartridge

Open the cartridge compartment lid, take out the used ink ribbon cartridge and replace it with a new one.

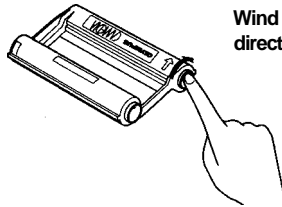


Storage precaution

- Do not store an ink ribbon cartridge in a place subject to high temperature or humidity, excessive dust or direct sunlight.

To load a half-used ink ribbon cartridge

While pressing the center of the reel, wind the ink ribbon in the direction of the arrow.



Wind the reel in the direction of the arrow.

If the ink ribbon tears, replace it with a new ink ribbon cartridge.

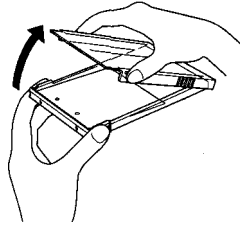
Loading print paper

Cautions

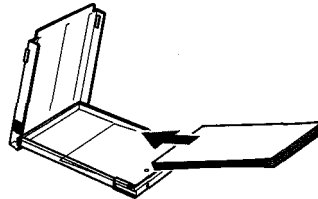
- Be careful not to stain or damage the paper feed guide.
- Do not touch the print surface (the glossy surface with nothing printed on it) when handling print paper.
- Do not leave print paper in a place subject to excessive dust. Clear prints cannot be obtained if dust or fingerprints are installed on the print surface.
- To prevent malfunction, use the dedicated print paper only.
- The maximum number of print paper sheets that can be placed in the paper feed cassette is 25. Be careful not to exceed this number when adding print paper. If too many print paper sheets are loaded, the printer may jam.
- To prevent paper jam, do not fold or bend print paper.
- Do not write on print paper before printing images on it. If you want to write something, be sure to write it after printing, using an oil-based ink. It is not possible to print word processor or typewriter characters on print paper.

Loading print paper in the paper feed cassette

- 1 Open the top case of the paper feed cassette by holding the finger hooks on both sides of the cassette.



- 2 Hold the bundle of print paper sheets so that the protective sheet is on top, then insert the bundle into the paper feed cassette pocket. After inserting the print paper, remove the protective sheet. Each bundle of sheets can consist of up to 25 sheets of print paper.



- 3 Close the top case. Close the top case of the paper feed cassette. Be careful not to catch print paper between the case and the front or side panel.

Note

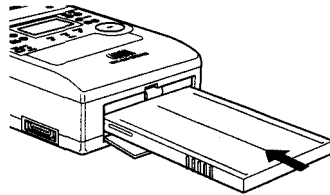
- If you need to transport the paper feed cassette with print paper loaded in it, put the paper feed cassette in a bag or other container.

Storage precautions

- **Do not store print paper in a place subject to high temperature or humidity, excessive dust or direct sunlight.**
- When it is necessary to remove loaded print paper from the printer and store it for a long period, store it in the original bag in which the print paper was supplied.

Installing the paper feed cassette onto the printer

- 1** Open the cover of the paper feed cassette insertion slot by pulling the cover toward the front.
To close the cover, push it until the finger hooks on the cover lock with a click.
- 2** Insert the paper feed cassette all the way.



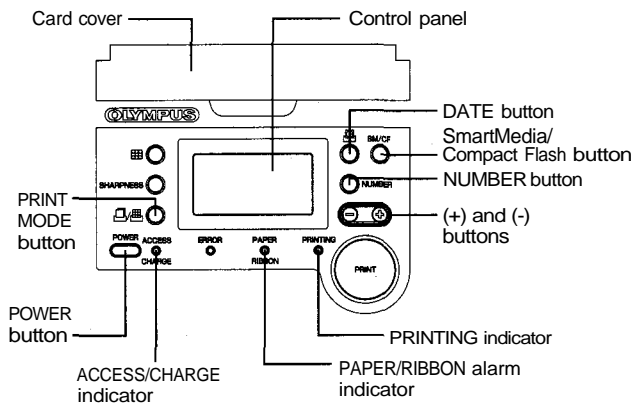
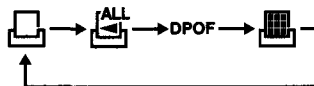
Printing images recorded on the card (SmartMedia or CompactFlash)

The following procedure describes how to select a single image from the card and print it on a single (full-screen) screen (**standard print**).



Standard print

Every time you press the PRINT MODE button, the print mode changes in the following order: **standard print** → **all-frame print** → **DPOF print** → **index print**.



Preparation

- 1 Check the image to be printed on the digital camera.
Before inserting the card in the printer, confirm the frame number of the image to be printed.

Note

- When you use a card that contains images captured by a different camera, the frame numbers displayed by your camera may not correspond with the ones shown by the printer. To make sure that the printer prints the correct image, use the index print function (see page 33). Or, if your camera can display file names, switch the printer's control panel to file name display to select the image to be printed (see page 27).

Cautions

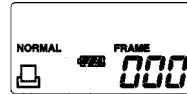
- If SmartMedia cannot be inserted easily, do not force it in, but remove it, check the SmartMedia insertion orientation and retry insertion from the beginning.
- The image recorded in SmartMedia should be printed as it was recorded using an Olympus digital camera. Proper display and printing performances are not guaranteed for images that have been retouched and saved on a PC or that have been recorded with another brand of digital camera.
- **Never attempt to insert or remove SmartMedia while the ACCESS/CHARGE indicator on the operation panel is blinking.** Doing so could destroy the card's formatting, making it unusable.

Notes

- Always use 3 V (3.3 V) SmartMedia with a capacity of 2, 4, 8, 16, 32 or 64 MB.

- 2 Press and hold the POWER button of the printer for more than 1.5 seconds to turn the printer ON. The printer generates a beep tone and the control panel is displayed. (The FRAME number indicator appears when the printer is turned ON.)

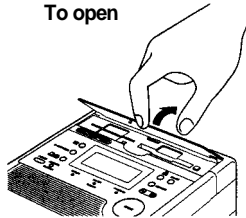
<Power ON> (without any card)



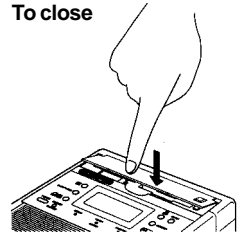
Opening the card cover

- Open the card cover by hooking your finger on the finger hook at the center of the card cover. To close the card cover, push the top surface of the card cover lock.

To open



To close

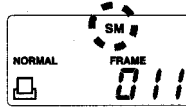


Inserting the card into the printer's slot

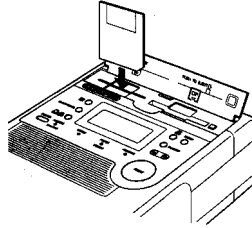
- 1 Inserting a SmartMedia into the printer To print images stored in SmartMedia, open the card cover and insert the card in the SmartMedia slot. The ACCESS/CHARGE indicator on the operation panel blinks while the SmartMedia is accessed and turns off when the image has been loaded in the printer. The control panel also shows the card type (SmartMedia) and the frame number of the last recorded image.

- SmartMedia cards always have priority, even when a CompactFlash card has already been inserted first. If you want to use data from the CompactFlash card, press the SmartMedia/Compact Flash button to select it.
- Keep the card cover open while SmartMedia is inserted in the printer.

<Control panel display when SmartMedia is inserted>



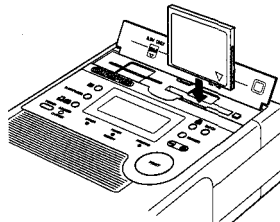
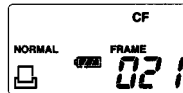
- Hold SmartMedia so that the cut corner is on the bottom right and insert it all the way in. When inserted properly, the SmartMedia card will protrude about 7 mm from the printer panel.



Insert all the way without stopping. If an error is displayed (-E-), retry insertion from the beginning. If the display does not go out refer to "Troubleshooting" on page 40.

- 2** Inserting a CompactFlash card into the printer
To print images stored in CompactFlash, open the card cover and insert it in the CompactFlash slot. The ACCESS/CHARGE indicator on the operation panel blinks while the SmartMedia or CompactFlash is accessed and turns off when the image has been loaded in the printer. The control panel also shows the card type (SmartMedia or CompactFlash) and the frame number of the last recorded image.

<Control panel display when CompactFlash is inserted>



- Hold CompactFlash so that the ▽ marking points toward the bottom and insert CompactFlash all the way in.

Cautions

- If CompactFlash cannot be inserted easily, do not force it in, but remove it, check the CompactFlash insertion orientation and retry insertion from the beginning.
- The image recorded in CompactFlash should be printed as it was recorded using an Olympus digital camera. Proper display and printing performances are not guaranteed for images that have been retouched and saved on a PC or that have been recorded with another brand of digital camera.
- **Never attempt to insert or remove CompactFlash while the ACCESS/CHARGE indicator on the operation panel is blinking.** Doing so could destroy the CompactFlash formatting, making it unusable.

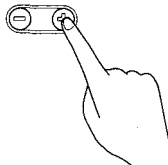
Notes

- Always use Type I (with a capacity of no more than 160 MB) or Type II (with a capacity of 340 MB) Compact Flash.
- SmartMedia cards always have priority, even when a CompactFlash card has already been inserted first. If you want to use data from the SmartMedia card, press the SmartMedia/ CompactFlash button to select it.
- Keep the card cover open while CompactFlash is inserted in the printer.

If an error is displayed (-E-) during insertion, retry insertion from the beginning. To remove CompactFlash, press the EJECT button. If the display does not go out, refer to "Troubleshooting" on page 40. If the EJECT button is already pressed in the low position, press it once to return it to the high position then press it again to eject. **While the card is being ejected, the error display (-E-) may appear at times. Even if this happens, remove the card. (The error display may also appear if the card is not removed after ejection, but this is not a malfunction.)**

Printing

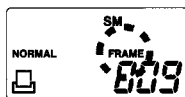
- 1 Press the (+) or (-) button to select the frame number of the image to be printed.



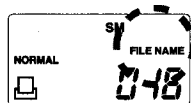
To change the frame number display to file name display:

The frame number display on the control panel can be switched to file name display. Press and hold the DATE and NUMBER buttons simultaneously for about 2 seconds. The FRAME indicator turns off, the FILE NAME indicator lights, and the lowest 3 digits of the file number are displayed below the indicator. Pressing and holding the two keys simultaneously again lights the FRAME indicator and activates the frame number display function.

<Frame No. display>



<File name display (file name assigned in recording by camera)>



- Press and hold the (+) or (-) button to increase or decrease the displayed frame Nos. at a higher speed. The frame number display range is between 001 and 1999.
- Even when the file name display function is selected, images can be selected in the same way as with the frame number display function.

Digital cameras with a file name display function usually use 7 digits. The printer's file name display function (with the FILE NAME indicator lit) displays only the lowest 3 digits in the file name.

The (+) and (-) buttons can vary only the lower 3 digits being displayed.

Note

- If your digital camera does not assign file names using 7 digits, use the frame number display function (with the FRAME indicator lit). The corresponding frame numbers can be checked by performing index printing (see page 33).

Caution

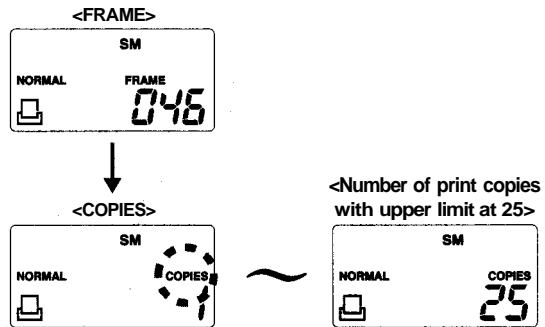
- When the button function is switched to the frame number display function after selecting more than one print copy, the COPIES indicator on the control panel blinks to indicate that the number of print copies selected is more than one.

Use the following procedure to change the display to show the higher 3 digits of the file name (the higher 3 digits of the file name are the one that is displayed on the LCD screen of the digital camera).

- ① Press the (+) and (-) buttons simultaneously for about 2 seconds.
 - The FILE NAME indicator blinks and the higher 4 digits are displayed.
- ② Press the (+) or (-) button while FILE NAME blinks to display higher 3 digits of other files.
 - When no button is pressed for 3 seconds or more, the lower 4 digits for the newly selected higher 3 digits will be displayed.
 - To display the higher 3 digits again, restart the procedure from step ① again.

2 Press the NUMBER button to switch the button function to the number of print copies selection function.

- Select the desired number of print copies with the (+) or (-) button. Any number between 1 and 25 can be selected.
- The default print copies setting is 1. The above operation is required only when you want to print more than one copy of the same image.



Cautions

- Never attempt to insert or remove the SmartMedia or CompactFlash card while the ACCESS/CHARGE indicator on the operation panel is blinking. Otherwise, the card's formatting may be destroyed, making it unusable.
- Do not insert or remove the SmartMedia or CompactFlash card during printing. Otherwise, normal printing may be impossible, or the card's formatting may be destroyed, making it unusable.
- Never open the cartridge compartment lid during printing. This can make it impossible to remove the ink ribbon cartridge or cause a paper jam. Should you open the cartridge compartment lid by mistake, see page 43.
- Never remove the paper feed cassette during printing. This can make it impossible to remove the ink ribbon cartridge or cause a paper jam. Should you remove the paper feed cassette by mistake, see page 43.
- Never move the printer during printing. This can make it impossible to remove the ink ribbon cartridge or cause a paper jam.

3 Press the PRINT button.

- ① A short beep is generated, the ACCESS/CHARGE indicator blinks to indicate that the data is being loaded, and the PRINTING indicator lights when printing starts.
- ② If print paper runs out during printing:
The printer beeps repeatedly, and the PAPER/RIBBON alarm indicator on the top panel blinks rapidly (at intervals of about 0.25 second). Load print paper in the paper feed cassette. The remaining image copies will be printed automatically. Usually, the ink ribbon cartridge runs out at the same time as the print paper. When this occurs, replace the ink ribbon cartridge before adding print paper.
- ③ If the ink ribbon cartridge runs out during printing:
The printer beeps repeatedly, and the PAPER/RIBBON alarm indicator on the top panel blinks slowly (at intervals of about 0.5 second). Wait until the print paper comes out and then replace the ink ribbon cartridge with a new one. The remaining image copies will be printed automatically when the cartridge compartment lid is closed.

-
- Do not disconnect the AC adapter during printing, even if the optional rechargeable battery is loaded in the printer. Also do not connect the AC adapter during battery-powered printing operation. Otherwise, normal printing may be impossible.
 - Do not disconnect the AC adapter or remove the optional rechargeable battery during printing. This can make it impossible to remove the ink ribbon cartridge or cause a paper jam. Printer malfunction may result if the printer is left in this condition. Should you disconnect or remove the power supply by mistake, turn the printer ON again and restart printing from the beginning.
 - The printing process is repeated 4 times for each printed sheet. Therefore, you should never pull out a sheet by hand even when it protrudes from the printer.
 - Do not stack prints. Also do not allow the print surface to come into extended contact with PVC, plastic or an eraser containing plastic. Otherwise, the printed image may be transferred on it.

To cancel printing:

Press and hold the POWER button for more than 1.5 second. The control panel will turn off and the printer will turn OFF.

If printing is canceled, printing stops and the printer turns OFF. Printing of any non-print copies is also canceled.

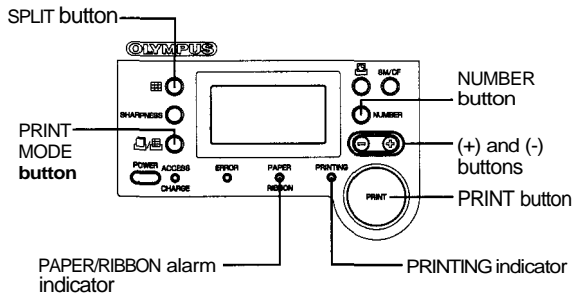
Making split prints

Before you begin printing, turn the printer ON.

Making split prints of the same image

Standard **All-frame**

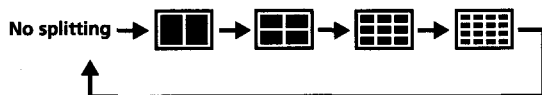
You can select the same image for 2-split, 4-split, 9-split or 16-split planes and print them on single sheet of print paper.



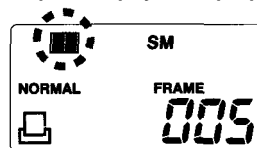
Before you begin printing:

Turn the printer ON.

- 1** Select the image for printing.
 - ① Insert the SmartMedia or CompactFlash card in the slot (see pages 24-25).
 - ② Press the (+) or (-) button to select the frame number of the image to be printed.
- 2** Press the SPLIT button to select the number of split planes from 2-split, 4-split, 9-split and 16-split, so that the control panel displays the corresponding indicator. Every time you press the SPLIT button, the split mode switches as follows.



<Control panel display for 4-split planes>

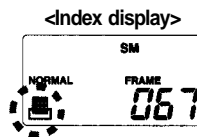


- 3** Press the **NUMBER** button to select the number of print copies display
Select the desired number of print copies with the (+) or (-) button. Any number between 1 and 25 can be selected (see step 2 on page 28).
- 4** Press the **PRINT** button.
The **PRINTING** indicator lights and the image will be printed in the selected number of split planes (see step 3 on page 29).

Index print

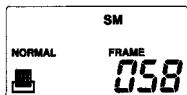
You can print up to 30 successive images recorded in a SmartMedia or CompactFlash card on a single sheet of print paper by designating the last frame number of the desired 30 successive frame Nos. Index printing is useful when you want to choose which image to print or you need an image list in the form of thumbnails. (While the file names assigned by digital cameras are usually composed of 7 digits, this printer prints only files whose highest three digits are the same and distinguishes the file names by the lower 4 digits. When you want to change the higher 3 digits of the file names, see page 27.)

- 1** Press the **PRINT MODE** repeatedly until the index display appears on the control panel.



- 2** Select the last frame number (FRAME) by pressing the NUMBER button, then select the desired frame number where you want to start printing with the (+) or (-) button.
(30 images including and located before the selected frame number or file name will be printed in reverse order.)

<Frame No. designation

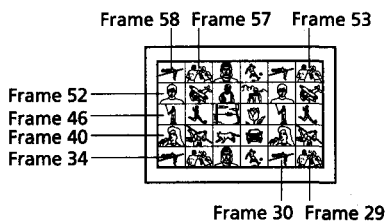


- 30 images will be printed in reverse order starting from frame 58 (selected in this example) and ending at frame 29.

- 3** Set the number of print copies.
Press the NUMBER button to select the print copy selection function (see step 2 on page 28).

- 4** Press the PRINT button.
The PRINTING indicator lights and the image will be printed in the selected number of split planes (see step 3 on page 29).

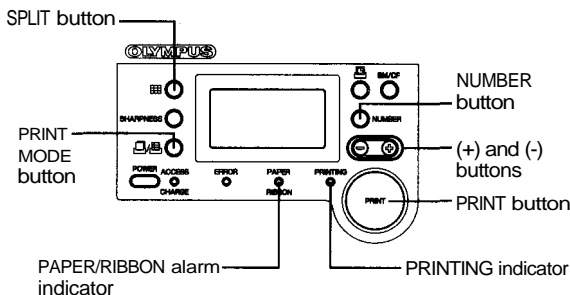
<Example of a frame No. order>



Printing all recorded images in a SmartMedia or CompactFlash card

All-frame

You can print all the images recorded in a SmartMedia or CompactFlash card. Images can be printed in one full size image per sheet or in split planes. However, all-frame printing may sometimes be unavailable when the file name display function is selected. While the file names assigned by digital cameras are usually composed of 7 digits, this printer prints only files whose highest three digits are the same and distinguishes the file names by the lower 4 digits. When you want to change the higher 3 digits of the file names, see page 28.



Before you begin printing:

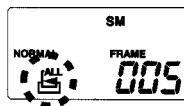
Turn the printer ON.

Note

- In all-frame printing, all recorded images on the card will be printed in reverse order starting from the selected frame. Make sure that the last frame number is displayed as the starting frame number when printing all images.

- 1 To print all the images recorded on a SmartMedia or CompactFlash card, press the PRINT MODE button until the all-frame display appears on the control panel.

<All-frame display>



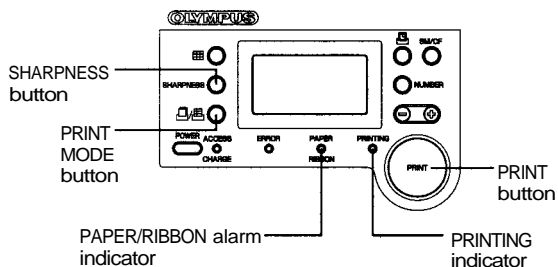
All-frame printing

- ① Press the **NUMBER** button to select the frame number display function (**FRAME**).
 - ② Select the first frame number to be printed with the (+) or (-) button. All-frame printing starts from the selected frame number, and images are printed in reverse order. During printing, the frame number display on the control panel shows the frame number being printed. When all-frame printing ends, the frame number selected at the beginning of the printing is displayed again.
- 2** Press the **SPLIT** button to select the desired number of split planes.
To print images one by one at full size, turn off all the split indicators on the control panel.
To print images one by one in split planes, turn on the 2-split, 4-split, 9-split or 16-split indicator on the control panel (see step 2 on page 31).
- 3** Press the **NUMBER** button to select the number of print copies selection function.
Select the number of print copies with the (+) or (-) button. Any number between 1 and 25 can be selected (see step 2 on page 28).
- 4** Press the **PRINT** button.
The **PRINTING** indicator lights and the image will be printed in the selected number (see step 3 on page 29).

Printing DPOF-reserved images

DPOF

You can print all the images reserved for DPOF printing by the digital camera. Images can be printed as one full size image per sheet. However, note that certain digital cameras do not have the DPOF facility. For DPOF setting, refer to your digital camera's instruction manual.

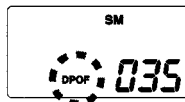


Before you begin printing:

Turn the printer ON.

- 1 To print all the images reserved for DPOF, press the PRINT MODE button until the DPOF display appears on the control panel.

Display when DPOF is set

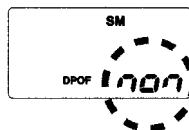


The total number of print copies displayed decreases after each sheet is printed. The total number of print copies is displayed again when printing ends.

Note

- If DPOF printing is selected on the printer, but has not been reserved with the camera, the control panel shows "non".

Display when DPOF is not set



Notes

- DPOF allows printing of images designated by Olympus digital cameras provided with the DPOF reservation facility.
- When DPOF reservation is used, only sharpness can be adjusted with this printer.
- If trimming is specified in the DPOF reservation, printing may take longer.
- DPOF reservation is compatible with date printing, print copies selection and trimming.

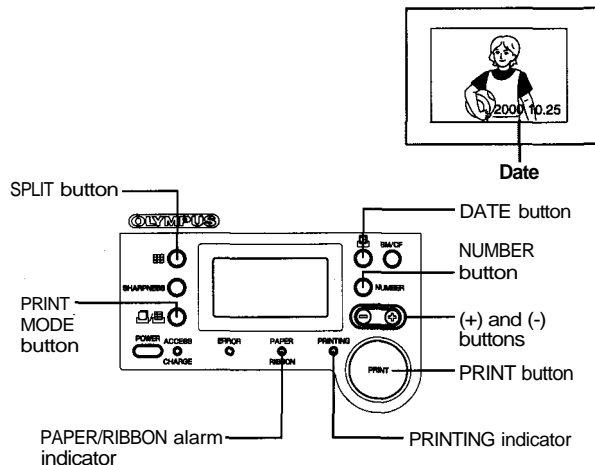
2 Press the PRINT button.

The PRINTING indicator lights and the image will be printed in the selected number of split planes (see step 3 on page 29).

Printing the date

Standard All-frame Split

You can print the date recorded together with images in a SmartMedia or CompactFlash card. **(Date printing)**



- The date is set by the digital camera. For date setting, refer to your digital camera's instruction manual.

Before you begin:

- 1 Turn the printer ON.
- 2 For standard printing of selected images on the card, select the standard indicator on the control panel using the PRINT MODE button. For all-frame printing, select the ALL-frame indicator. For split printing, select the split print indicator.

1 Select the image for printing.

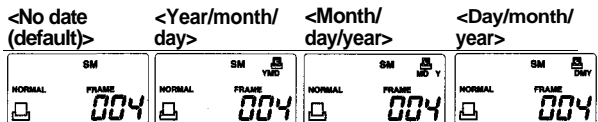
- ① When the standard indicator or one of the split print indicators is selected above, press the NUMBER button to select the frame number selection function. Then select the frame number of the desired image with the (+) or (-) button.
- ② When the ALL-frame indicator is selected above, select the frame number where you want to start printing.

2 Press the DATE button.

The date indicator will be displayed on the control panel.



Every time the DATE button is pressed, the display changes in the following order: no date; year/month/day; month/day/year; and day/month/year. Select the desired date format.



3 Press the NUMBER button to switch to the selection of the number of print copies.

Select the desired number of print copies with the (+) or (-) button. Any number between 1 and 25 can be selected.

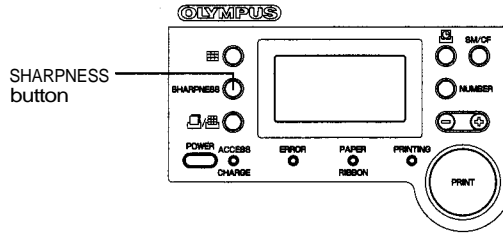
4 Press the PRINT button.

The PRINTING indicator lights and printing with dates will begin.

Adjusting the sharpness

Standard All-frame Index DPOF

Press the SHARPNESS button to select the degree of contour correction in prints.



Every time you press the SHARPNESS button, the indicator changes in the order of NORMAL, SOFT and SHARP.

Note

- With some types of images, the contour may be excessively enhanced.

NORMAL: Standard sharpness
SOFT: Soft edges
SHARP: Enhanced edges

Troubleshooting

Use the following measures to solve problems you may experience with your printer, and also read the Installation Guide provided with the optional P-200 connection kit. If the problem persists, contact your dealer.

Cannot turn the printer ON.

- ① The AC adapter is not connected.
→ Connect the AC adapter properly. (Page 15)
- ② Rechargeable battery is not installed.
→ Install the rechargeable battery. (Page 16)
- ③ The remaining battery power is low.
→ Fully recharge the rechargeable battery. (Page 16)

Cannot operate the printer with any of operation buttons.

- ① When the ACCESS/CHARGE indicator blinks or PRINTING indicator lights, the printer is communicating with the PC.
→ The buttons on the printer are defeated during communication. Wait a few moments. (Pages 24-25)
- ② When only the battery frame is displayed on it, the remaining battery power is low.
→ Recharge the rechargeable battery. (Page 16)

Cannot remove the ink ribbon cartridge.

- ① The printer is OFF.
→ Turn the printer ON again and wait until the mechanical sound stops.

Printing takes a long time to start.

- ① The printer takes a long time to print a TIFF file.
→ The printer takes about 3 minutes to print a 3-million-pixel TIFF image file. (Actual time varies depending on the image size.) Wait until the file printing completes.
- ② Trimming reserved by DPOF takes a long time.
→ Trimming takes about 2 minutes. Wait until the file printing completes.

Cannot print.

- ① The ink ribbon cartridge is not installed.
→ Install an ink ribbon cartridge. (Page 18)
- ② The paper feed cassette is not installed.
→ Install the paper feed cassette. (Page 21)
- ③ Print paper is jammed at the paper exit.
→ Remove jammed paper and retry printing. (Page 21)
- ④ The printer cannot recognize the image format.
→ Printing from the card is not possible.
- ⑤ Indicator(s) light(s) or blink(s).
→ See pages 41-42.

The control panel displays 000 when the card is inserted.

- ① There is no recognizable image data on the card.
→ Check your camera's manual to confirm that its recording format is compatible with the printer (DCF/EXIF).

The error display (-E-) appears when the card is inserted.

- ① The card is not inserted correctly.
→ Remove the card and insert it again.
- ② There is a problem with the card.
→ Check the card and its contents. (Pages 24-26)

Noise interferes with printed images.

- ① The data being printed is not data recorded by a digital camera.
→ Use a PC to print out image data that has not been recorded by a digital camera.
- ② The data being printed has been processed by retouching software, etc.
→ The printer may be unable to print image data which has not been recorded by a digital camera.

Printing intervals are longer.

- ① Printing intervals are automatically extended during continuous printing to prevent the internal components from overheating. (At this time, the PRINTING indicator blinks.)
→ This is not a malfunction. Wait a few minutes.

If indicators light or blink

If you cannot print, check the indicators on the operation panel of the printer.

The PAPER/RIBBON alarm indicator blinks slowly (at intervals of about 0.5 sec.).

- ① No ink ribbon cartridge is installed in the printer.
→ Install an ink ribbon cartridge to the printer. (Page 18)
- ② The print ribbon in the ink ribbon cartridge has run out.
→ Replace the ink ribbon cartridge with a new one. (Page 20)

The PAPER/ RIBBON alarm indicator blinks fast (at intervals of about 0.25 sec.).

- ① The paper feed cassette is not installed.
→ Install the paper feed cassette. (Page 22)
- ② No print paper is loaded in the paper feed cassette.
→ Remove the paper feed cassette, place print paper in it and install it to the printer. (Pages 21-22)

The ERROR, PAPER/RIBBON and PRINTING indicators blink.

- ① Paper is jammed.
→ Remove jammed paper. (See below.)

The ACCESS/CHARGE indicator blinks.

- ① The SmartMedia or CompactFlash card is being accessed.
→ Wait a few minutes without removing the card.

The ERROR indicator blinks.

- ① The cartridge compartment lid is open.
→ Close the cartridge compartment lid. (Page 18)
- ② An error has occurred.
→ Turn the printer OFF and ON. If the error persists, consult your dealer.

The PRINTING indicator blinks.

- ① The printer is in cooling standby mode.
→ Wait a few minutes.

The PRINTING indicator lights.

- ① Trimming process is underway.
→ Wait a few minutes.

If print paper is jammed

If print paper is jammed, the ERROR, PAPER/RIBBON and PRINTING indicators blink and printing stops. When you remove the paper feed cassette, make sure that no print paper is bent or curled and that paper sheets are placed properly.

1. Turn the printer OFF.
2. Turn the printer ON again to automatically eject the print paper from the printer.
3. If automatic paper ejection does not occur, turn the printer OFF and remove the paper feed cassette.
4. If the sheet of print paper is protruding far enough from the paper feed cassette compartment to remove by hand, pull it out.
5. If jammed print paper cannot be removed, do not re-install the paper feed cassette. Consult your dealer.

■ If you open the cartridge compartment lid by mistake during printing:

1. Close the cartridge compartment lid to eject print paper automatically.
2. If the print paper is not ejected automatically, remove the paper feed cassette and remove the print paper projecting from the paper feed cassette compartment by hand.

■ If you remove the paper feed cassette by mistake during printing:

1. Printing of the current sheet will continue until finished. After the sheet has been ejected, the ERROR indicator will light. Install the paper feed cassette.
2. When the print paper feed operation stops and the ERROR indicator lights —
 - ① If no print paper is seen through the inlet of the paper feed cassette compartment, install the paper feed cassette to eject print paper automatically.
 - ② If a sheet of print paper is projecting from the paper feed cassette compartment, remove it by hand. If the paper cannot be removed by hand or is stuck inside the paper feed cassette compartment, do not install the paper feed cassette. Call your dealer.

About the ink ribbon cartridge and print paper

- Always use the ink ribbon cartridge and print paper specified by Olympus.
 - They are available by ordering the following Olympus model number (as of October 2000).
Print Pack, Standard Set: **P-25N**
 - The standard set contains an ink ribbon cartridge and sheets of print paper.
- The ink ribbon cartridge is not reusable.
 - The ink ribbon cartridge is not reusable once the ink ribbon runs out.
 - When the ink ribbon runs out, the PAPER/RIBBON indicator blinks slowly (at intervals of about 0.5 second). Replace the ink ribbon cartridge with a new one.
- Do not use wet print paper.
If you use wet print paper, printing is not possible and the printer may also malfunction.
- Do not use bent print paper. Otherwise, paper jam may result.
- When the printer is not to be used for an extended period of time, remove the print paper from the paper feed cassette and store the paper in a bag in order to protect the paper from dust and prevent possible deformation.
- Do not open the packages containing the ink ribbon cartridge and print paper until immediately before use.
- Read the notes printed on the ink ribbon cartridge and print paper packages.

Storage after printing

- Do not allow the print surface to come in contact with scotch tape, a desk pad or an eraser containing plastic for an extended period of time. Otherwise, the print surface may be discolored.
- Do not store ink ribbon cartridges and print paper in a place subject to direct sunlight, high temperature/humidity or in the reach of children.
- Dispose of a used ink ribbon cartridge in compliance with the plastic waste disposal method prescribed by your local authorities.

Specifications

Printer

Printing system

Sublimation dye transfer printing
4-pass printing (Yellow/Magenta/
Cyan and protective overcoat layer)

Resolution

320 dpi

Effective pixels

1280 (H) x 960 (V) dots (maximum)

Print paper size

4.9 x 3.1 inches (125.6 x 80 mm)

Printing size

4 (H) x 3 (V) inches (maximum)
(101.6 (H) x 76.2 (V) mm)

Gradations

128 levels (7 bits) per color
Approx. 2,097,000 colors

Card operation time

Approx. 7 seconds for 2,000,000-
pixel class
Approx. 11 seconds for 3,000,000-
pixel class
Under Olympus test conditions

Printing time

Approx. 90 seconds per sheet
(excluding card operation time and
data transmission time)

Usable card

SmartMedia
3 V (3.3 V), exclusive, 64 MB or less
CompactFlash
Type I (160 MB or less)
Type II (340 MB or less)

Input/output connectors

Parallel interface (Centronics, 26-pin
x 1, compact adapter)

Ink ribbon cartridge

Y+M+C 3 layers and light-resistant
overcoat (protective layer)
(Capacity: 25 sheets)

Compatible image file format

DCF-compatible, JFIF/EXIF-
compliant [JPEG (baseline)/TIFF
(RGB)]
DPOF-compatible (print copies,
trimming and date)

Power requirements

7.6V DC
Dedicated AC adapter
Dedicated battery charger (optional)

Power consumption

30 W (during printing)
12 W (during standby)

Operating temperature

41-95°F (5-35°C)

Operating humidity

20-80%

Dimensions

Without automatic feeder:
Approx. 4.8 x 2 x 6 inches
(W/H/D, excluding protruding
parts)
(121 x 52 x 153 mm)

Mass

Approx. 1.8 lb (830 g, excluding
automatic feeder and battery pack)

Automatic feeder

Maximum storage quantity

25 sheets

Print paper

See page 17.

Dimensions

Approx. 3.5 x 0.35 x 5.3 inches
(W/H/D, excluding protruding
parts)
(90 x 9 x 134 mm)

Mass

Approx. 2.3 oz (65 g)

Design and specifications are subject to
change without notice.

FCC notice

This equipment generates and uses radio frequency energy and if not installed and used properly, that is, in strict accordance with the manufacturer's instructions, may cause interference to radio and television reception. It has been type tested and found to comply with the limits for a Class B computing device in accordance with the specifications in Subpart J of Part 15 of FCC Rules, which are designed to provide reasonable protection against such interference in a residential installation. However, there is no guarantee that interference will not occur in a particular installation. If this equipment does cause interference to radio or television reception, which can be determined by turning the equipment off and on, the user is encouraged to try to correct the interference by one or more of the following measures:

- reorient the receiving antenna
- relocate the computer with respect to the receiver
- move the computer away from the receiver
- plug the computer into a different outlet so that computer and receiver are on different branch circuits.

If necessary, the user should consult the dealer or an experienced radio-television technician for additional suggestions. The user may find the following booklet prepared by the Federal Communications Commission helpful: "How to Identify and Resolve Radio-TV Interference Problems." This booklet is available from the U.S. Government Printing Office, Washington, D.C., 20402, Stock No. 004-00-00345-4.

This digital apparatus does not exceed the Class B limits for radio emissions from digital apparatus set out in the Radio Interference Regulation of the Canadian Department of Communications.

Accessories (as of October 2000)

- Print pack (standard set, P-25N)
- Dedicated rechargeable battery (B-200NH)
- PC connection kit, parallel (C-P20P)
- PC connection kit, USB (C-P20U)
- Gadget bag for P-200
- SmartMedia (8 MB/16 MB/32 MB/64 MB)

Print index

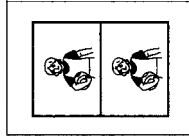
Standard print



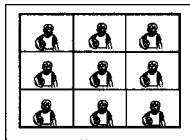
Standard (Page 23)

All-frame (Page 34)

Split printing (Page 31)

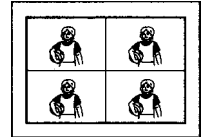


2-split print

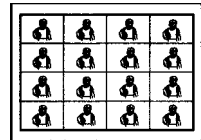


9-split print

Standard **All-frame**

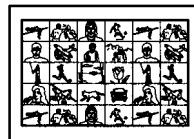


4-split print



16-split print

Index printing (Page 33)



Index

Date printing (Page 37)



Standard **All-frame**

Split

- IBM PC/AT is a registered trademark of International Business Machines Corporation of the U.S.A.
- Microsoft and Windows are registered trademarks of Microsoft Corporation in the United States and other countries.
- Macintosh is a trademark licensed to Apple Computer Inc., registered in the U.S.A. and other countries.
- All other product names mentioned herein may be the trademarks or registered trademarks of their respective companies.

"™" and "®" are not indicated in each case in this manual.

© OLYMPUS OPTICAL CO., LTD. 2000. All rights reserved.

- No portion of this manual may be copied or reproduced by any means without the prior written permission of OLYMPUS.
- All contents of this manual are subject to change without notice.
- All specifications and designs are subject to change without notice.
- OLYMPUS shall assume no responsibility for any problems caused by this product. OLYMPUS shall also assume no responsibility for any accidental or consequential damages (including lost business benefits, suspended business activities, and lost information) caused by use or malfunction of the product, even if the damages are possibly attributable to the product. When filing for damages, the user cannot claim compensation higher than the cost for which he/she purchased the product, even if the damages result from breach of contract, illegal operations (including errors), and problems with the product's reliability.

OLYMPUS®

OLYMPUS OPTICAL CO., LTD.

San-Ei Building, 22-2, Nishi Shinjuku 1-chome, Shinjuku-ku, Tokyo, Japan.
(Customer support) Tel. 0426-42-7499 Tokyo
<http://www.olympus.co.jp>

OLYMPUS AMERICA INC.

Two Corporate Center Drive, Melville, NY 11747-3157, U.S.A. Tel. 631-844-5000
(Customer support) Tel. 1-888-553-4448
<http://www.olympus.com>

OLYMPUS OPTICAL CO. (EUROPA) GMBH.

(Premises/Goods delivery) Wendenstraße 14-16, 20097 Hamburg, Germany. Tel. 040-237730
(Letters) Postfach 10 49 08, 20034 Hamburg, Germany.
<http://www.olympus-europa.com>

Free Manuals Download Website

<http://myh66.com>

<http://usermanuals.us>

<http://www.somanuals.com>

<http://www.4manuals.cc>

<http://www.manual-lib.com>

<http://www.404manual.com>

<http://www.luxmanual.com>

<http://aubethermostatmanual.com>

Golf course search by state

<http://golfingnear.com>

Email search by domain

<http://emailbydomain.com>

Auto manuals search

<http://auto.somanuals.com>

TV manuals search

<http://tv.somanuals.com>