



\* SP8L



\* SP4L



\* SP8H



\* SP2L

## Smart Power Series - SP2L / SP4L / SP8H / SP8L

Remote Control Surveillance Management System

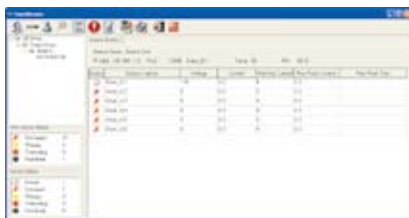
### Features

- \* Control Power Switch of Remote Equipment via network or phone voice to replace the presence of the personnel
- \* LED face board to inspect current equipment ID, Main Current and each Router Current directly
- \* Execute Power On / Off Reboot via console to manage its performance
- \* Detect whether two sets of power circuit are normal automatically
- \* It can be linked with 16 sets monitors at maximum to control up to 128 sets of connected devices
- \* It can be attached temperature detector to control the power switch according to environment change
- \* It is equipped with overloading electric breaking protector to avoid overloading to cause device damage
- \* Support nearby Manual Power Switch
- \* Support Wake on Ring function. ATX equipment can be started normally
- \* Provide 20 sets of accounts and passwords for your own setting to manage different power switches
- \* Record the user's operating message and abnormal message to provide the user to check the case afterwards
- \* Support Power Start sequence setting to prevent all of switches from starting simultaneously to cause sudden overloading and effect equipment working
- \* Provide API interface. The manager can develop the control software by himself
- \* Support Windows, Linux to execute the safety shutdown and avoid system damage
- \* Pre-set Switch Start Time and arrange the working schedule for power supply
- \* Each rout can detect UPS low power signal to provide safety shutdown management for the equipment
- \* Detect whether the power current of all routes are normal or not to avoid current overloading to damage the device
- \* By brief message and email warning to practice the instant surveillance and warning to important equipment
- \* Provide remote net firmware to renew the function
- \* Provide the function of IP and MAC address filter that prevent unauthorized user from access the device

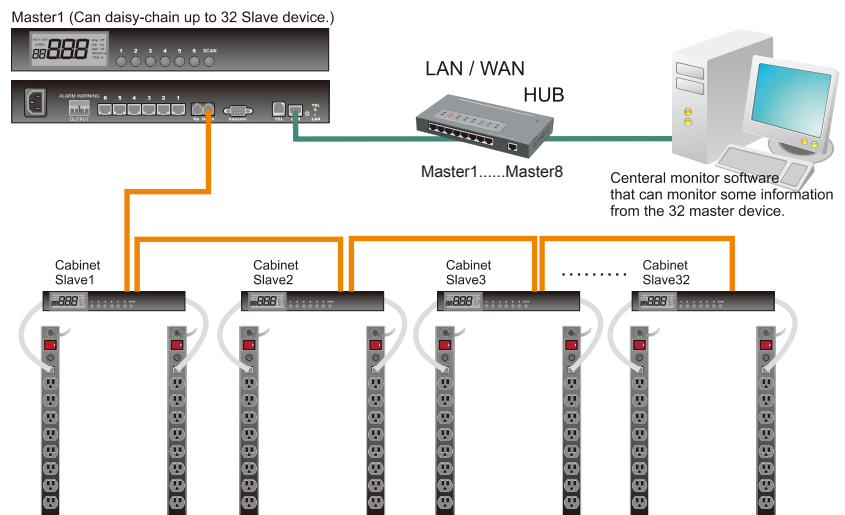
## Digital Monitor PDU for the cabinet of Datacenter

### Features

- \* The Master or Slave that setup in the cabinet can connect up to 6 unit PDU
- \* The Master/Slave RJ45 socket in the back end can connect 6 PDU
- \* The Master/Slave has 6 button that sign 1-6 separately. It can check all connected PDU's current.  
The scan button can show every connected PDU's current alternately
- \* The Master/Slave build-in the sensor of temperature/humidity and show it on LCD panel.  
Administrator can learned about temperature/humidity of cabinet from LCD panel
- \* Every Slave can daisy-chain to Master by the RJ11 PORT(UP&DOWN) in the front end.  
Any of Slave breakdown don't affect other Slave's data transmitter, all Slave's data will bypass to the Master



Central monitor software



Every slave can daisy-chain 6 unit PDU

## Free Manuals Download Website

<http://myh66.com>

<http://usermanuals.us>

<http://www.somanuals.com>

<http://www.4manuals.cc>

<http://www.manual-lib.com>

<http://www.404manual.com>

<http://www.luxmanual.com>

<http://aubethermostatmanual.com>

Golf course search by state

<http://golfingnear.com>

Email search by domain

<http://emailbydomain.com>

Auto manuals search

<http://auto.somanuals.com>

TV manuals search

<http://tv.somanuals.com>