



URC-9990

MOSAIC<sup>®</sup>

**UK** Universal Touch Screen Remote . . . . . P.2

**D**

**F**



---

*User guide* p.2

*Bedienungsanleitung* S.44

*Mode d'emploi* p.86

**MOSAIC**®

---

ONE FOR ALL MOSAIC URC-9990

DD-0201

701571

# Table Of Contents

---

INTRODUCTION . . . . .	3
INSTALLING BATTERIES . . . . .	3
LOW-BATTERY INDICATOR . . . . .	3
USING THE TOUCH SCREEN . . . . .	4
<b>DEVICE SET-UP . . . . .</b>	
BY BRAND . . . . .	5
BY SEARCH . . . . .	7
BY CODE . . . . .	8
DELETE . . . . .	9
NEW CODES (IN CASE OF UPGRADE) . . . . .	10
<b>PERSONALIZATION . . . . .</b>	
MACROS . . . . .	12
MOVE KEY . . . . .	19
LEARN . . . . .	22
LABEL KEYS . . . . .	25
KEY MAGIC . . . . .	27
VOLUME LOCK . . . . .	30
VIEW/DELETE . . . . .	32
HOME THEATER . . . . .	33
<b>SYSTEM . . . . .</b>	
UPGRADE (ADDING NEW CODES) . . . . .	36
LCD . . . . .	37
SOUND ON/OFF . . . . .	38
LOCK SETTINGS . . . . .	39
USER RESET . . . . .	40
LANGUAGE . . . . .	41
ABOUT . . . . .	42
<b>CUSTOMER SERVICE . . . . .</b>	43
<b>CODES . . . . .</b>	
TELEVISION . . . . .	128
VIDEO RECORDERS . . . . .	135
SATELLITE RECEIVERS . . . . .	138
CABLE CONVERTERS . . . . .	141
VIDEO ACCESSORIES . . . . .	141
CD/MINI DISC . . . . .	141
PHONO . . . . .	142
HOME AUTOMATION . . . . .	142
AMPLIFIERS . . . . .	142
AMP/TUNERS . . . . .	142
CASSETTE PLAYERS . . . . .	143
LASER DISC . . . . .	143
DAT . . . . .	143
DVD . . . . .	143

# Introduction

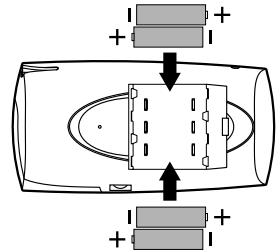
Your ONE FOR ALL MOSAIC is designed to let you use one remote to operate your Video and Audio equipment; any device designed to be operated by an infrared signal. This also includes those devices which operate over 100 kHz. You can choose any combination of 15 devices you would like to operate. The ONE FOR ALL MOSAIC comes available with the world's largest and most efficient database of infrared codes for device compatibility. It is further enhanced by ONE FOR ALL's patented upgrade-ability. Also, what makes the MOSAIC even more unique is the "Learning" feature which allows you to customise any of the special functions of your original remote control onto the keypad of your new ONE FOR ALL.

The following pages explain in simple steps how to customize the ONE FOR ALL MOSAIC to your home entertainment needs.

## Installing Batteries

Your MOSAIC needs 4 new "AA/LR6" alkaline batteries .

1. Remove the battery cover from the back of the ONE FOR ALL MOSAIC by pressing down on the tab.
2. Match the batteries to the + and - marks inside the battery case, then insert the batteries.
3. Press the battery cover back in place.

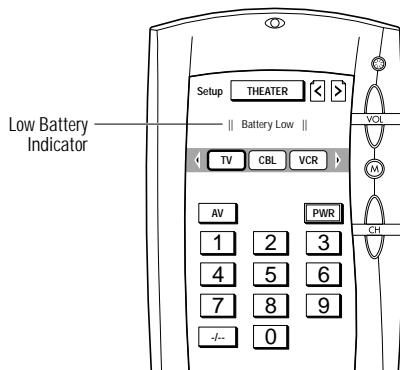


## Low-Battery Indicator

Whenever the batteries need replacement, the MOSAIC will emit a "beep sound" (even if the sound is turned off). The MOSAIC will indicate this as well on the top portion of the screen with a "Battery Low" message.

At this point, only the control functions will work and all of the MOSAIC's DEVICE SETUP and PERSONALIZATION parameters will be disabled to prevent accidental loss of any entered commands should the batteries run out.

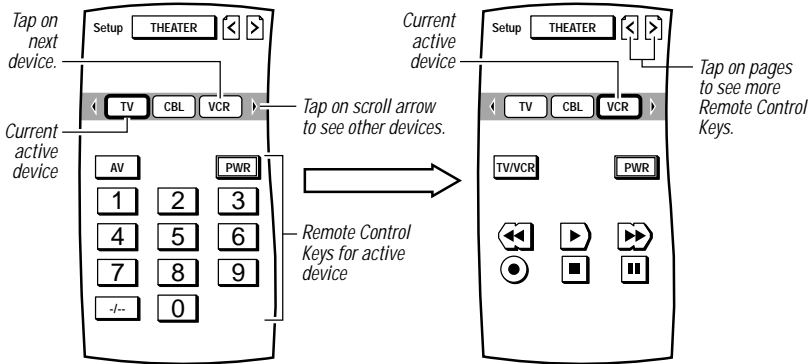
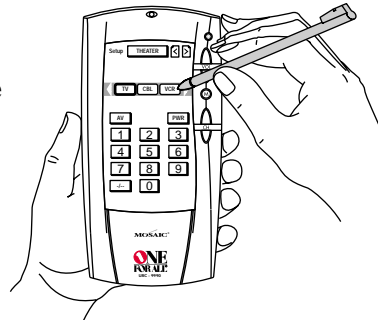
Simply replace the batteries as soon as possible. Press any IR key and the MOSAIC will be restored to its full functionality, complete with your favourite settings.



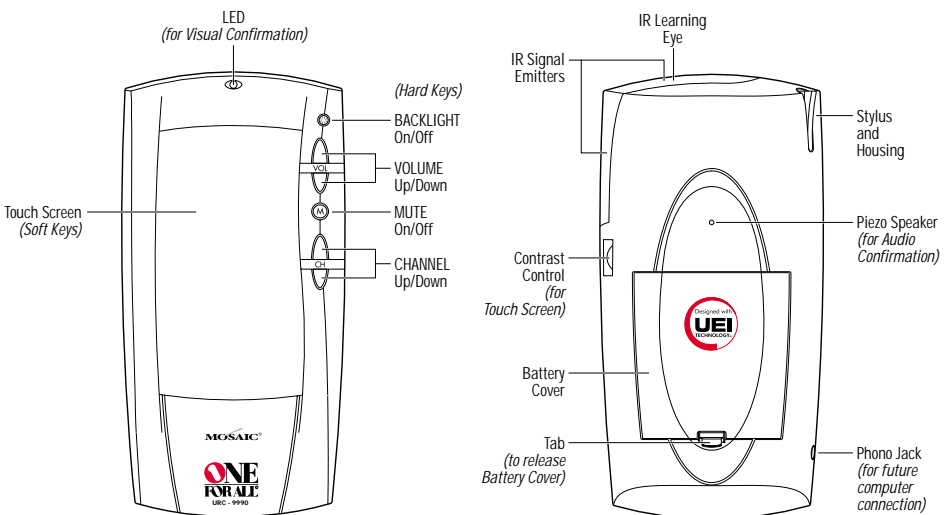
# Using the touch screen

MOSAIC features a *Touch Screen* that responds to touch commands, whether you use the supplied *Stylus* or your finger tip. Each time you tap on the screen, you'll see the LED blink and hear a beep tone, which serve as visual and audio confirmation of your command.

After 20 seconds of inactivity, MOSAIC will turn off the LCD screen to conserve battery life.



**NOTE:** By pressing the ? key you will obtain additional information about the displayed menu.



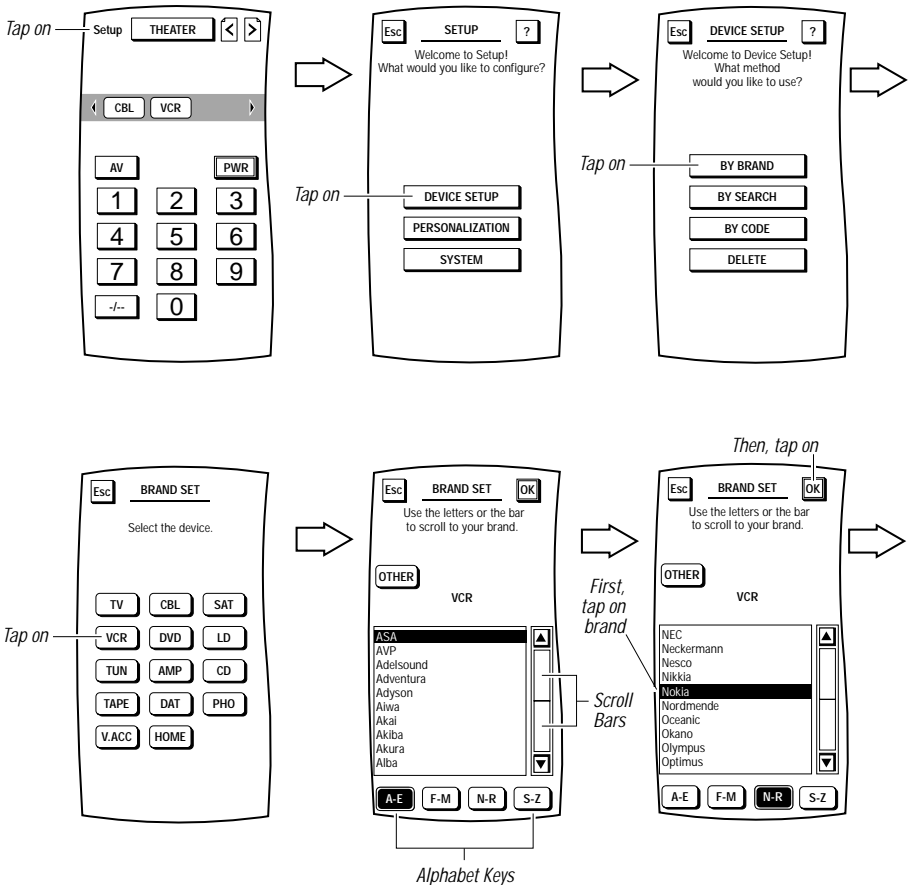
# Device Setup

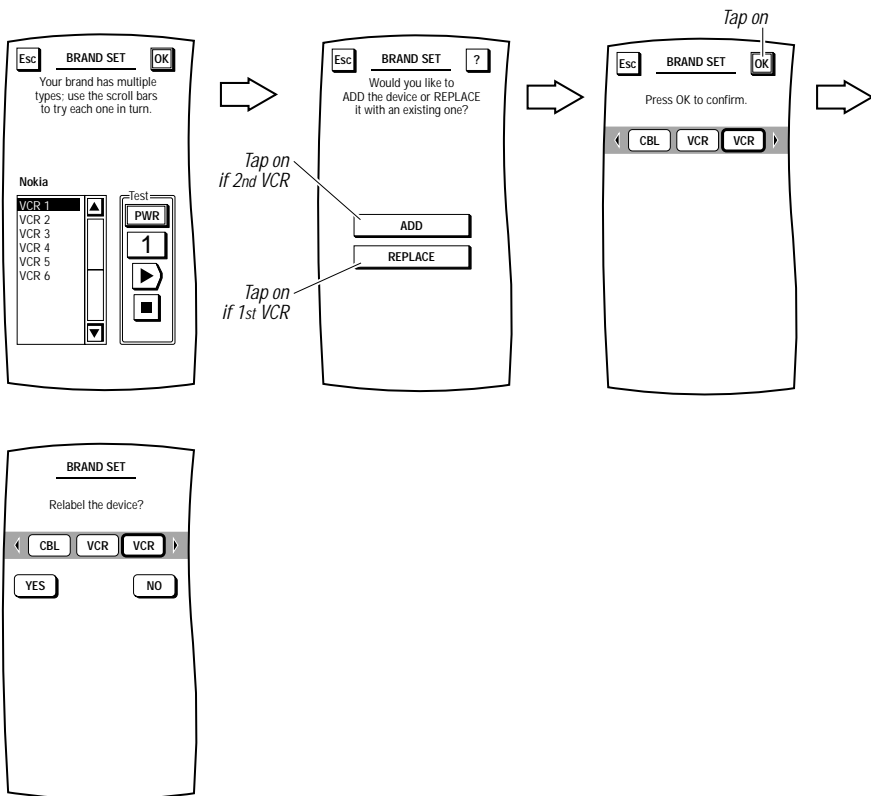
## BY BRAND

The easiest way to add devices to MOSAIC is to perform a setup by manufacturer brand. With this method you select a device to add, select the brand you own, and MOSAIC automatically finds the correct manufacturer's code to correctly control the device.

**Example:** to Set-Up your Video Recorder (brand: Nokia):

*NOTE: To return to a previous menu, tap on the **ESC** key. To return to last-displayed Device Screen, press down on **ESC** or **MUTE** for at least 2 seconds. For help, tap the **?** key.*





- To relabel the device key, tap on the YES key and you will see the LABEL Menu (see explanation on page 25 step 6).
- To keep the label the same, tap on the NO key.

**You will see a confirmation screen that says the key has been successfully programmed. To program another device, tap on the ESC key. To return to the Device Screen, press on ESC or MUTE for at least 2 seconds.**

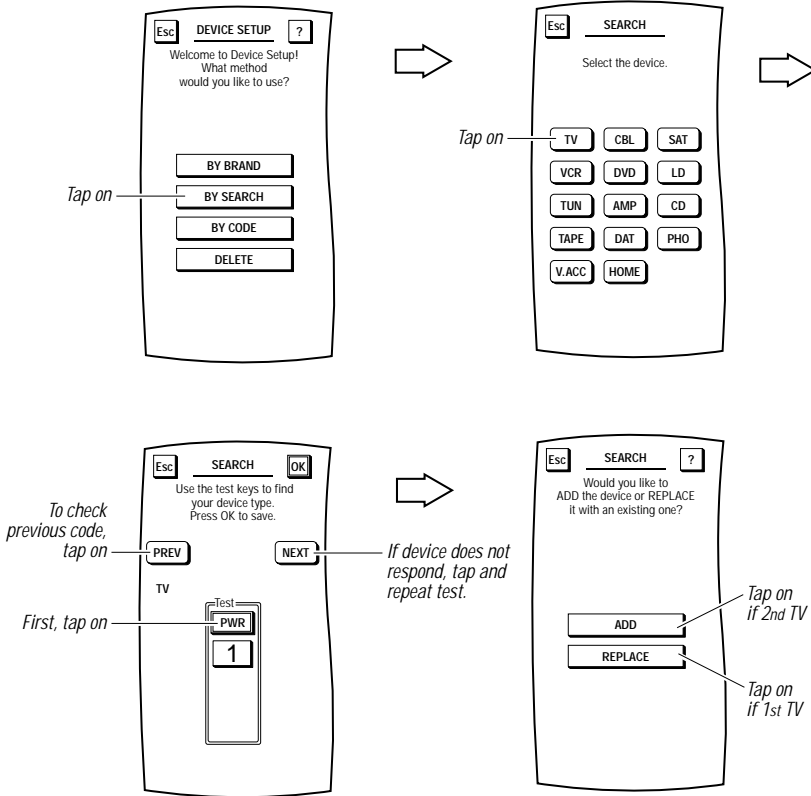
To test remote control of the newly-added device, tap on its key on the Device Selection Strip. Try using the Hard Keys to adjust volume and change channels. Try tapping on the Page Arrows to access other remote control functions and then try tapping on the soft keys on each page to test them.

*NOTE: Remember to press the correct device key before operating your device. Only one device (CD, amplifier, cassette, etc.) can be assigned to a device key. If your original remote operates more than one device (for example, a receiver, CD player and cassette player in one remote), you need to set up each device separately.*

# SETUP BY SEARCH

As an alternative method, you can use MOSAIC's search program to find the correct manufacturer's codes to set up your entertainment devices. With this method you first select a device you want to add, then you perform a code test, advancing through one or more types, to find the one that works.

**Example:** to use the search method for your television:



Tap on the **OK** key to confirm your choice. MOSAIC will ask if you want to relabel the newly-added device.

- To relabel it, tap on the **YES** key and you will see the LABEL Menu (see explanation on page 25 step 6).
- To keep the label the same, tap on the **NO** key.

**You will see a confirmation screen that says the key has been successfully programmed. To program another device, tap on the ESC key. To return to the Device Screen, press on ESC or MUTE for at least 2 seconds.**

To test remote control of the newly-added device, tap on its key on the Device Selection Strip. Try using the Hard Keys to adjust volume and change channels. Try tapping on the Page Arrows to access other remote control functions and then try tapping on the soft keys on each page to test them.

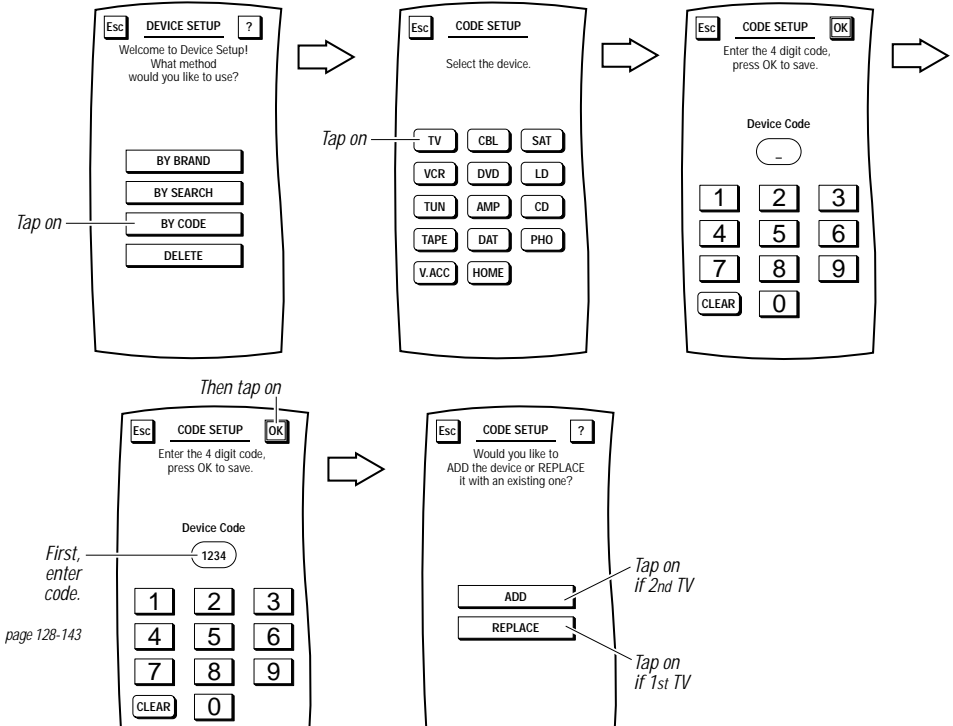


# SETUP BY CODE

Find the code for your device in the Set-Up Code section (starting on page 128). Codes are listed by device type and brand name. The most popular code is listed first. Make sure your device is switched on (not in standby). Newly captured Manufacturer's codes are available for customer access on our web site [www.oneforall.com](http://www.oneforall.com).

1. Tap on Setup key (upper left corner).
2. Tap on DEVICE SETUP.

**NOTE:** To return to a previous menu, tap on the **ESC** key. To return to last-displayed Device Screen, press down on **ESC** or **MUTE** for at least 2 seconds. For help, tap the **? key**.



3. Tap on the **OK** key to confirm your choice. MOSAIC will ask if you want to relabel the newly-added device.
  - To relabel it, tap on the YES key and you will see the LABEL Menu (see explanation on page 25 step 6).
  - To keep the label the same, tap on the NO key.

**You will see a confirmation screen that says the key has been successfully programmed. To program another device, tap on the ESC key. To return to the Device Screen, press on ESC or MUTE for at least 2 seconds.**

To test remote control of the newly-added device, tap on its key on the Device Selection Strip. Try using the Hard Keys to adjust volume and change channels. Try tapping on the Page Arrows to access other remote control functions and then try tapping on the soft keys on each page to test them.

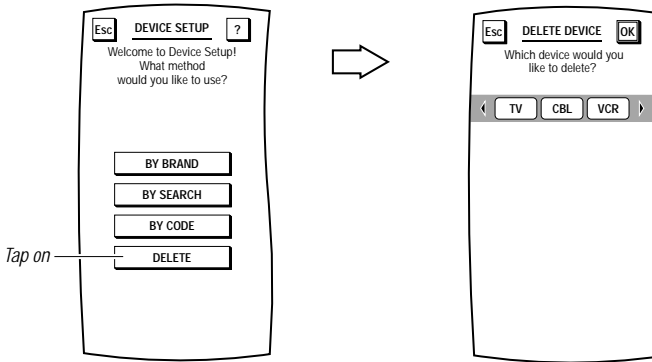
# DELETING A DEVICE

If you no longer use a certain device or it has been incorrectly added to the *Device Selection Strip*, use the following procedure to delete it from MOSAIC's memory.

1. Tap on Setup key (upper left corner).
2. Tap on DEVICE SETUP.

*NOTE: To return to a previous menu, tap on the **ESC** key. To return to last-displayed Device Screen, press and hold down **ESC** for at least 2 seconds. For help, tap the **?** key.*

3. Tap on the **DELETE** key. You will see the DELETE DEVICE Menu which shows the current Device Selection Strip.



4. Using the Device Selection Strip, tap the device key you want to delete. If needed, tap the left/right scroll arrows to display other device choices. When you have selected a device, it will become highlighted as **YES** and **NO** keys appear.
- To delete the selected device, tap on the **YES** key. You will see a confirmation screen that says the key has been successfully deleted. To delete another device, tap on the **ESC** key to return to the DELETE DEVICE Menu, or press down on **ESC** or **MUTE** for at least 2 seconds to return to the last-displayed Device Screen.
  - To cancel deleting the selected device, tap on the **NO** key. MOSAIC will return to the Device Selection Strip with no devices selected to start the process over. If you're done, tap on the **ESC** to return to the **DEVICE SETUP** Menu, or press down on **ESC** or **MUTE** for at least 2 seconds to return to the last-displayed Device Screen.

# NEW CODES

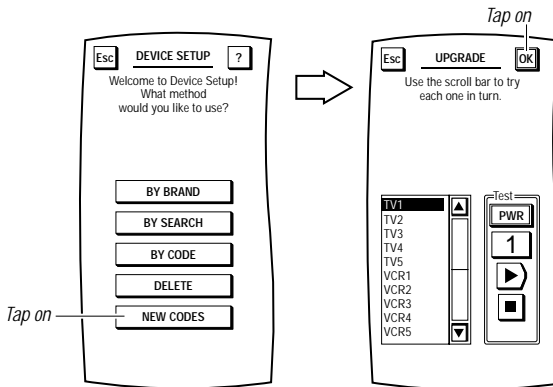
NOTE: This section only applies after you have performed a download of new device codes (see SYSTEM – UPGRADE on page 36).

NOTE: Make sure the device you want to add is turned on (not in standby).

After downloading, MOSAIC will store the new device codes in memory. An additional soft key, labelled **NEW CODES**, will appear on the DEVICE SETUP Menu which you will use to find a working code for a selected device.

1. Tap on Setup key (upper left corner).
2. Tap on DEVICE SETUP.
3. Tap on the **NEW CODES** key. You will see the UPGRADE Test Menu.

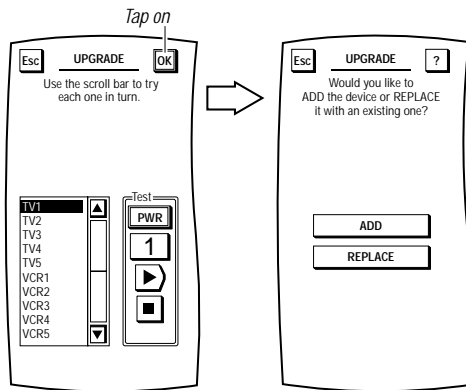
NOTE: To return to a previous menu, tap on the **ESC** key. To return to last-displayed Device Screen, press and hold down **ESC** for at least 2 seconds. For help, tap the ? key.



4. Tap on the first code in the list (e.g., **TV 1**), aim MOSAIC at the desired device (e.g., television), and tap on the **PWR** key. The device should turn off. If it does not respond, tap on the next code in the list (e.g., **TV 2**), then tap on the **PWR** key again. If the device still does not respond, repeat this process by testing each code until you find one that works.

NOTE: Depending on your download, the code list may include more than one device type.

5. To save a code that works, tap on the **OK** key. You will see the **UPGRADE ADD/REPLACE** menu that lists two choices.



- Use the **ADD** key when setting up a new device (e.g., a DVD player) that is not currently on the *Device Selection Strip* (if needed, refer to *USING THE TOUCH SCREEN* – on page 4). The remaining instructions assume you will be adding a new device.
  - Use the **REPLACE** key when replacing a device (e.g., a TV set) that is currently on the *Device Selection Strip*.
6. Tap on the **ADD** key to add the device to MOSAIC's memory. You will see the default device label being added to the *Device Selection Strip*.
 

*NOTE: If you tap on the **REPLACE** key instead, MOSAIC will ask you to select the device to be replaced and, after your selection, if you want to relabel it. However, if the device to be replaced has programmed keys, MOSAIC will first ask if you want to keep or clear the settings.*
  7. Tap on the **OK** key to confirm your choice. MOSAIC will ask if you want to relabel the newly-added device.
    - To relabel it, tap on the YES key and you will see the LABEL Menu (see explanation on page 25 step 6).
    - To keep the label the same, tap on the NO key.
  8. You will see a confirmation screen that says the key has been successfully programmed. To program a function of the same type, tap on the **ESC** key. To return to the *Device Screen*, press on **ESC** or **MUTE** for at least 2 seconds.
  9. To test remote control of the newly-added device, tap on its key on the *Device Selection Strip*. Try using the Hard Keys to adjust volume and change channels. Try tapping on the *Page Arrows* to access other remote control functions and then try tapping on the soft keys on each page to test them.
  10. If desired, repeat all steps to add other devices that appeared in the new codes list of step 3.

# Personalization

---

## MACROS

MOSAIC includes a powerful *Macro* feature that memorizes and plays back a series of key strokes at any time with the tap of one key. Up to 21 macros can be defined, each containing a maximum of 32 keystrokes. Once defined, a macro must be placed on a *Device Screen* to be used. MOSAIC allows placement of up to four “global” macro keys across the top of every *Device Screen*. Also, you may place additional macros in specific *Device Screens* using empty locations or by overriding existing key functions.

### ADDING A MACRO

As an instruction aid, we'll create an example “Power On” macro that turns on the Cable Box and TV power and then tunes in a favorite channel in this exact order:

1. Select the Cable Box and power it on.
2. Add a 2-second delay.
3. On the Cable Box, select channel 28.
4. Select the TV and power it on.
6. Add a 1-second delay.
7. On the TV, select channel 3 to view the modulated signal from the Cable Box.

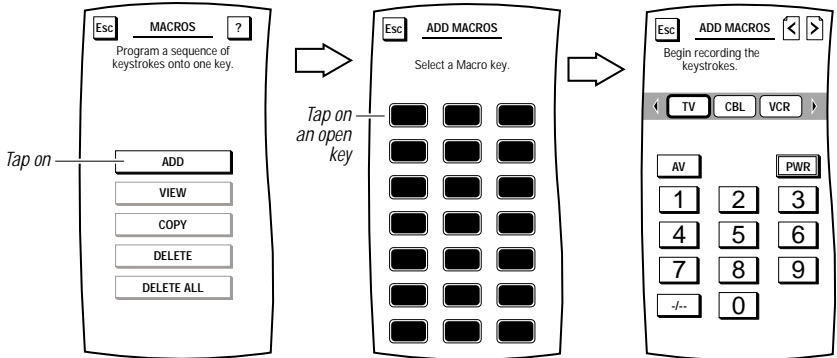
Each command counts as one macro keystroke, except when selecting a device key which counts as two. In this example, the total keystroke count is eleven.

*NOTE: Adding delays allow devices to power up to their full operating state. In most cases, 1 to 2 seconds is sufficient, but MOSAIC will accept up to 8 seconds and only count it as one keystroke.*

1. Tap on Setup key (upper left corner).
2. Tap on PERSONALIZATION.

*NOTE: To return to a previous menu, tap on the ESC key. To return to last-displayed Device Screen, press down on ESC or MUTE for at least 2 seconds. For help, tap the ? key.*

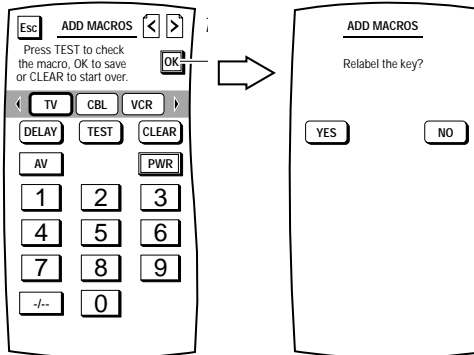
3. Tap on the **MACROS** key. You will see the *MACROS Menu*.
4. Tap on the **ADD** key. You will see the *ADD MACROS Menu*.
5. Tap on an open **Macro** key (i.e., a macro key that is not labelled). You will see the *ADD MACROS Screen* (as shown below) which looks similar to a Device Screen.



6. At this point, we'll record the example keystrokes listed on page 12. But first make sure the Cable Box and TV are turned off (in standby).
  - a. Tap on the **CBL** key on the *Device Selection Strip*.
  - b. Tap on the **PWR** key.
  - c. Tap on the **DELAY** key twice for 2-second delay.
 

*NOTE: Each DELAY keystroke is equal to 1 second.*
  - d. Tap on the **2** key followed by the **8** key to enter channel 28.
  - e. Tap on the **TV** key on the *Device Selection Strip*.
  - f. Tap on the **PWR** key.
  - g. Tap on the **DELAY** key once for 1-second delay.
  - h. Tap on the **0** key followed by the **3** key to enter channel 3.
  - i. Aim MOSAIC at the Cable Box/TV and tap on the **TEST** key. You should see the LED blink as commands are sent to power on the Cable Box and tune it to channel 28, followed by TV power on and tuning it to channel 3. If the macro did not work correctly, tap on the **CLEAR** key and repeat steps 6a through 6i.

7. To save the macro, tap on the **OK** key. You will see the **ADD MACROS Screen** (as shown below).



8. To label the saved macro, tap on the **YES** key. You will see the **ADD MACROS Label Screen**. Follow the procedure that is similar to the one starting with step 3 on page 25 to label the macro as TV On and tap the **OK** key when you're done.

*NOTE: If you tap on the **NO** key, the macro will be labelled using the default labeling system which labels macros in ascending numerical order (e.g., **M1**, **M2**, **M3**, etc.).*

9. MOSAIC will ask where you want to copy the macro.
- To have it appear on all *Device Screens*, tap on the **ALL DEVICES** key. You will see a row of up to four empty keys appear which correspond to the space directly below *Device Selection Strip*. Tap on any empty key to assign it or tap on an existing one to override it. MOSAIC will display a confirmation screen.
  - To have it appear on a specific *Device Screen*, tap on the **SPECIFIC DEVICE** key. You will see the last-displayed *Device Screen*. Using the *Device Selection Strip*, tap on the desired device key. If needed, tap on left/right scroll arrows to view other device choices. The *Device Screen* will display all keys on all pages for the selected device. Tap on any empty key. MOSAIC will display a confirmation screen.

*NOTE: To return to a previous menu, tap on the **ESC** key. To return to last-displayed *Device Screen*, press down on **ESC** or **MUTE** for at least 2 seconds. For help, tap the ? key.*

10. Repeat steps 1 through 9 for each new macro you want to create.

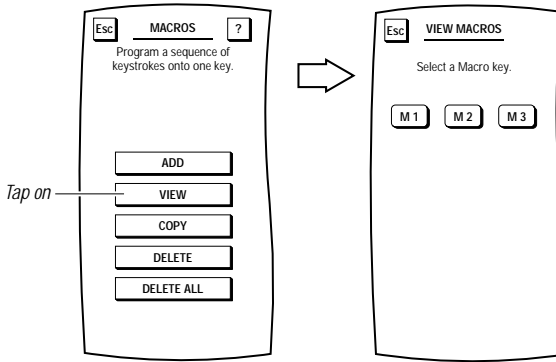
# VIEWING MACROS

To see what commands are stored in a macro, perform the following steps:

1. On the *Device Screen* in the upper left corner, tap on **Setup**. You will see the main *SETUP Menu* that greets you and asks, “*What would you like to configure?*”
2. Tap on the **PERSONALIZATION** key. You will see the *PERSONALIZATION Menu*.

*NOTE: To return to a previous menu, tap on the **ESC** key. To return to last-displayed Device Screen, press down on **ESC** or **MUTE** for at least 2 seconds. For help, tap the ? key.*

3. Tap on the **MACROS** key. You will see the main *MACROS Menu*.
4. Tap on the **VIEW** key. You will see the *VIEW MACROS Menu*.



5. Tap on any displayed **Macro** key (e.g., **M1**, **M2**, etc.). You will see the commands that make up the selected macro. To return to previous menu, tap on the **ESC** key. To return to the *Device Screen*, press down on **ESC** or **MUTE** for at least 2 seconds.



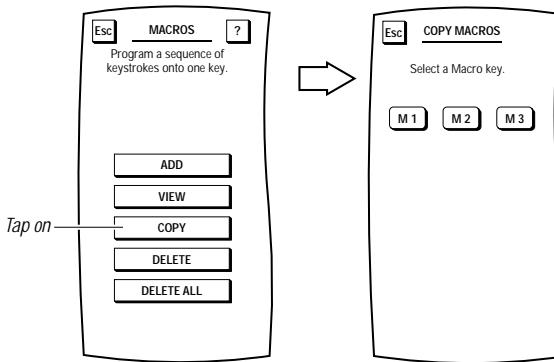
## COPYING MACROS

To copy a macro, perform the following steps:

1. On the *Device Screen* in the upper left corner, tap on **Setup**. You will see the main *SETUP Menu* that greets you and asks, “*What would you like to configure?*”
2. Tap on the **PERSONALIZATION** key. You will see the *PERSONALIZATION Menu*.

*NOTE: To return to a previous menu, tap on the **ESC** key. To return to last-displayed Device Screen, press down on **ESC** or **MUTE** for at least 2 seconds. For help, tap the ? key.*

3. Tap on the **MACROS** key. You will see the main *MACROS Menu*.
4. Tap on the **COPY** key. You will see the *COPY MACROS Menu*.



5. Tap on the macro key you want to copy. MOSAIC will ask you where you want to copy the macro.
  - To have it appear on all *Device Screens*, tap on the **ALL DEVICES** key. You will see a row of up to four empty keys appear which correspond to the space directly below *Device Selection Strip*. Tap on any empty key to assign it or tap on an existing one to override it. MOSAIC will display a confirmation screen.
  - To have it appear on a specific *Device Screen*, tap on the **SPECIFIC DEVICE** key. You will see the last-displayed *Device Screen*. Using the *Device Selection Strip*, tap the desired device key. If needed, tap the left/right scroll arrows to view other device choices. The *Device Screen* will display all keys on all pages for the selected device. Tap on any empty key and MOSAIC will display a confirmation screen.

*NOTE: To return to a previous menu, tap on the **ESC** key. To return to last-displayed Device Screen, press down on **ESC** or **MUTE** for at least 2 seconds. For help, tap the ? key.*

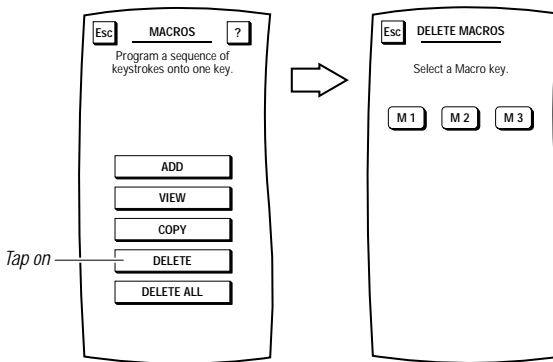
## DELETING A MACRO

To delete a single macro, perform the following steps:

1. On the *Device Screen* in the upper left corner, tap on **Setup**. You will see the main *SETUP Menu* that greets you and asks, “*What would you like to configure?*”
2. Tap on the **PERSONALIZATION** key. You will see the *PERSONALIZATION Menu*.

*NOTE: To return to a previous menu, tap on the **ESC** key. To return to last-displayed Device Screen, press down on **ESC** or **MUTE** for at least 2 seconds. For help, tap the ? key.*

3. Tap on the **MACROS** key. You will see the main *MACROS Menu*.
4. Tap on the **DELETE** key. You will see the *DELETE MACROS Menu*.



5. Tap on the **Macro** key you want to delete. You will see a confirmation screen that says the macro key has been successfully deleted from all device screens and the main *MACROS Menu*.

*NOTE: Use **VIEW/DELETE** (see *PERSONALIZATION – VIEW/DELETE* on page 32) to delete macros from Device Screens but keep them intact on the main *MACROS Menu* for future copying.*

To delete another macro key, tap on the **ESC** key to return to the *DELETE MACROS Menu*, or press down on **ESC** or **MUTE** for at least 2 seconds to return to the last-displayed *Device Screen*.

## DELETING ALL MACROS

To delete all macros, perform the following steps:

1. On the *Device Screen* in the upper left corner, tap on **Setup**. You will see the main *SETUP Menu* that greets you and asks, “*What would you like to configure?*”
2. Tap on the **PERSONALIZATION** key. You will see the *PERSONALIZATION Menu*.

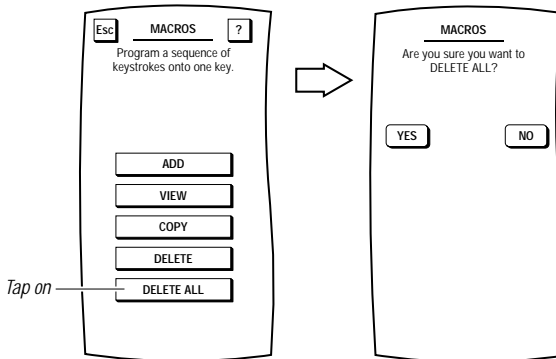
*NOTE: To return to a previous menu, tap on the **ESC** key. To return to last-displayed Device Screen, press down on **ESC** or **MUTE** for at least 2 seconds. For help, tap the ? key.*

3. Tap on the **MACROS** key. You will see the main *MACROS Menu*.
  4. Tap on the **DELETE ALL** key. MOSAIC will ask you to confirm your choice.
- To delete all macros, tap on the **YES** key. You will see a confirmation screen that says all macros have been successfully deleted on all device screens and the main *MACROS Menu*. Tap on the **ESC** key to return to the *DELETE MACROS Menu*.

*NOTE: Use **VIEW/DELETE** (see Personalization - View/Delete on page 32) to delete macros from Device Screens but keep them intact on the main *MACROS Menu* for future copying.*

- To cancel deletion of all macros, tap on the **NO** key. MOSAIC will return to the main *MACROS Screen*. If you want to delete a single macro, see the previous section, *Deleting A Macro* on page 17, or see *View/Delete* on page 32.

*NOTE: To return to a previous menu, tap on the **ESC** key. To return to last-displayed Device Screen, press down on **ESC** or **MUTE** for at least 2 seconds. For help, tap the ? key.*



# MOVE KEY

MOSAIC also includes our patented *Key Mover* feature that allows keys to be copied from one device to another, or to a different position in the same device mode. However, there are some considerations:

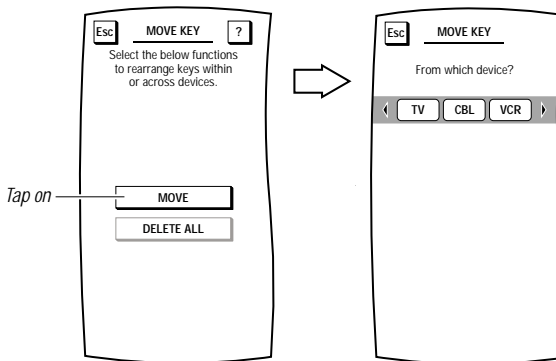
- A moved key is actually a copy of the original key. The original key cannot be deleted.
- A moved key will always be rectangular, even though the original version may be a different shape.
- A moved key retains the original label, but it can be relabelled.
- The *Key Mover* feature only works on IR function keys.

**Example:** we'll create an example that copies the AV key from TV Device Screen and adds it to the CBL Device Screen.

1. On the *Device Screen* in the upper left corner, tap on **Setup**. You will see the main *SETUP Menu* that greets you and asks, "What would you like to configure?"
2. Tap on the **PERSONALIZATION** key. You will see the *PERSONALIZATION Menu*.

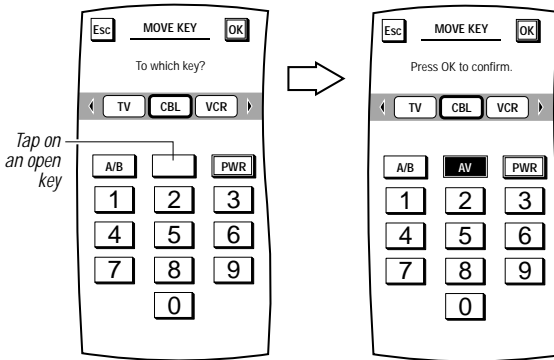
*NOTE: To return to a previous menu, tap on the ESC key. To return to last-displayed Device Screen, press down on ESC or MUTE for at least 2 seconds. For help, tap the ? key.*

3. Tap on the MOVE KEY key. You will see the MOVE KEY Menu.
4. Tap on the MOVE key. You will see the Device Selection Strip and MOSAIC asks you to choose a device from which to move a key.



5. Tap on a desired device key. For our example, tap on the TV key. MOSAIC will ask you to choose a key to be moved.
6. Tap on the key you want moved. If needed, tap on the Page Arrow keys to view other pages for the selected device. For our example, tap on the AV key. Again you will see the Device Selection Strip, but this time MOSAIC asks you to choose a device where the key will be moved to.
7. Tap on a desired device key. For our example, tap on the CBL key. MOSAIC will ask you to choose a key.

8. Tap on an empty key. If needed, tap on the Page Arrow keys to view other pages for the selected device. For our example, tap on the empty key located between the A/B and PWR keys. You will see the copied key pasted in place of the empty key.



9. To confirm your choice, tap on the OK key. To cancel the move, tap on the ESC key.
10. After confirming the move, MOSAIC will ask if you want to relabel the moved key.
- To keep the label the same, tap on the **NO** key. In our example, we'll keep the same label, **AV**.
  - To relabel the copied key, tap on the **YES** key. You will see the *MOVE KEY Label Screen*. Follow the procedure that is similar to the one starting with step 3 on page 25 to relabel the key and tap the **OK** key when you're done.
11. You will see a confirmation screen that says the key has been successfully programmed. To program a function of the same type, tap on the **ESC** key. To return to the *Device Screen*, press on **ESC** or **MUTE** for at least 2 seconds.

## DELETING ALL MOVED KEYS

1. On the *Device Screen* in the upper left corner, tap on **Setup**. You will see the main *SETUP Menu* that greets you and asks, “*What would you like to configure?*”
2. Tap on the **PERSONALIZATION** key. You will see the *PERSONALIZATION Menu*.

*NOTE: To return to a previous menu, tap on the ESC key. To return to last-displayed Device Screen, press down on ESC or MUTE for at least 2 seconds. For help, tap the ? key.*

3. Tap on **MOVE KEY**. You will see the *MOVE KEY Menu*.
4. Tap on the **DELETE ALL** key. MOSAIC will ask you to confirm your choice.
  - To delete all moved keys, tap on the **YES** key. You will see a confirmation screen that says all moved keys have been successfully deleted. Tap on the **ESC** key to return to the *MOVE KEY Screen*.
  - To cancel deletion of all moved keys, tap on the **NO** key. MOSAIC will return to the *MOVE KEY Screen*. If you want to delete a single moved key, see *VIEW/DELETE* on page 32.

*NOTE: To return to a previous menu, tap on the ESC key. To return to last-displayed Device Screen, press down on ESC or MUTE for at least 2 seconds.*

# LEARN

Like all sophisticated remote controls, MOSAIC includes a *Learning* feature so you can easily add a function from another remote control, assign it to a special key, label that key, and place it on the screen of your choice.

However, there are some considerations:

- Learning is allowed only for device function keys, not system keys.
- A learned key can replace an existing pre-defined key or a blank key.
- A learned key can be learned onto a soft or hard key.

*NOTE: Although a learned key can be learned onto a hard key, it will interfere with the original function of that key. Only make this choice when a hard key is not being used by a device (e.g., VOL keys for a CD Changer).*

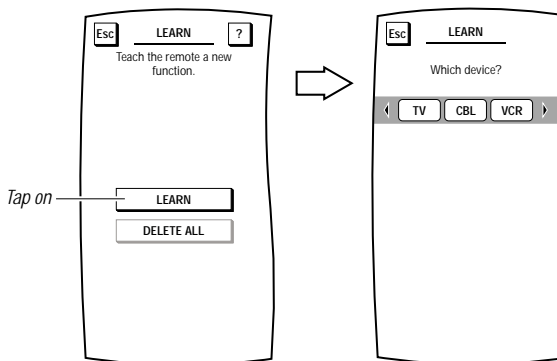
- A learned key will always be rectangular, even though the original version may be a different shape.
- If desired, a learned key can be relabelled.

## LEARNING A FUNCTION

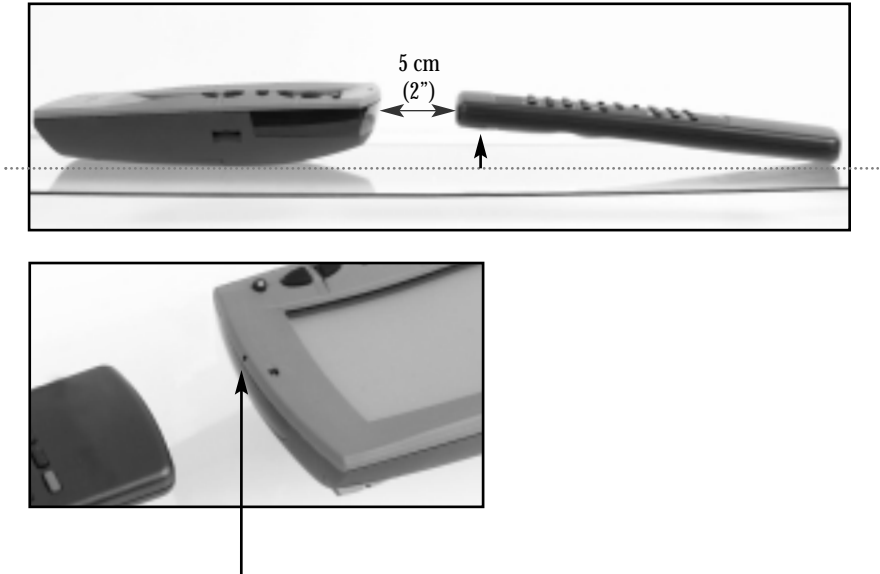
1. On the *Device Screen* in the upper left corner, tap on **Setup**. You will see the main *SETUP Menu* that greets you and asks, "What would you like to configure?".
2. Tap on the **PERSONALIZATION** key. You will see the *PERSONALIZATION Menu*.

*NOTE: To return to a previous menu, tap on the ESC key. To return to last-displayed Device Screen, press down on ESC or MUTE for at least 2 seconds. For help, tap the ? key.*

3. Tap on the **LEARN** key. You will see the *LEARN Menu*.
4. Tap on the **LEARN** key again. You will see the *Device Selection Strip* and MOSAIC asks you to choose a device that will be taught.



5. Tap on a desired device key. You will see its *Device Screen* and MOSAIC asks you to select a function key that will be learned onto. If needed, tap on the **Page Arrow** keys to view other pages for the selected device.
6. Tap on a desired function key – it can be pre-defined or blank. A **LEARN** key will appear and MOSAIC will ask you to place your original remote control, head-to-head, within 5 cm (2 inches) of MOSAIC, as shown below.



*NOTE: Please make sure to aim the your original remote to the arrow indicated on the front of your MOSAIC.*

7. Tap on the **LEARN** key. MOSAIC will turn on its LED and display a *Learning* message. On the original remote control, press and hold down the key you want learned. When the LED turns off, a confirmation message will appear stating that the IR codes from your original remote control were successfully captured.

*NOTE: If you hear a dual-tone audio beep, MOSAIC will display an error message stating that the IR codes were not captured. MOSAIC will ask you to repeat the procedure again.*

8. Tap on the **OK** key to accept the capture. MOSAIC will ask you if want to relabel the function key (as selected in step 6).
  - To relabel the function key, tap on the **YES** key. You will see the *LEARN Label Screen*. Follow the procedure that is similar to the one starting with step 3 on page 25 to relabel the key and tap the **OK** key when you're done.
  - To keep the label the same, tap on the **NO** key.
9. You will see a confirmation screen that says the key has been successfully programmed. To program a function of the same type, tap on the **ESC** key. To return to the *Device Screen*, press on **ESC** or **MUTE** for at least 2 seconds.

*NOTE: Be sure to test the learned function to see if it works. If not, repeat the procedure.*



## DELETING ALL LEARNED FUNCTIONS

1. Tap on Setup key (upper left corner).
2. Tap on PERSONALIZATION. You will see the PERSONALIZATION Menu.

*NOTE: To return to a previous menu, tap on the **ESC** key. To return to last-displayed Device Screen, press down on **ESC** or **MUTE** for at least 2 seconds. For help, tap the ? key.*

3. Tap on the **LEARN** key. You will see the *LEARN Menu*.
4. Tap on the **DELETE ALL** key. MOSAIC will ask you to confirm your choice.
  - To delete all learned keys, tap on the **YES** key. You will see a confirmation screen that says all learned keys have been successfully deleted. Tap on the **ESC** key to return to the *LEARN Screen*.
  - To cancel deletion of all learned functions, tap on the **NO** key. MOSAIC will return to the *LEARN Screen*. If you want to delete a single learned key, see *VIEW/DELETE* on page 32.

*NOTE: To return to a previous menu, tap on the **ESC** key. To return to last-displayed Device Screen, press down on **ESC** or **MUTE** for at least 2 seconds.*

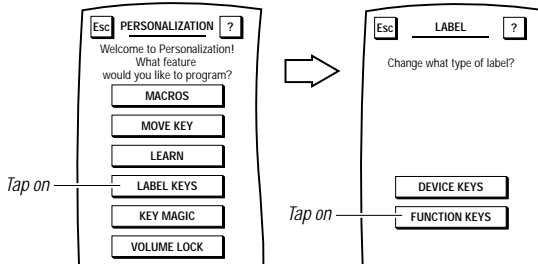
# LABEL KEYS

## LABELLING DEVICE KEYS

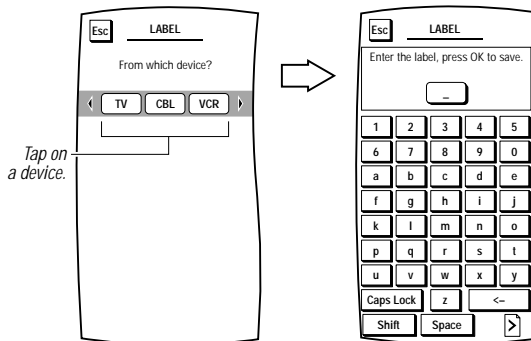
1. On the *Device Screen* in the upper left corner, tap **Setup**. You will see the main *SETUP Menu* that greets you and asks, "What would you like to configure?"
2. Tap on the **PERSONALIZATION** key. You will see the *PERSONALIZATION Menu*.

*NOTE: To return to a previous menu, tap on the ESC key. To return to last-displayed Device Screen, press down on ESC or MUTE for at least 2 seconds. For help, tap the ? key.*

3. Tap on the **LABEL KEYS** key. You will see the *LABEL Menu*.



4. Tap on the **DEVICE KEYS** key. You will see the *Device Selection Strip*, and MOSAIC asks you to choose a device you want to relabel.
5. Tap on a desired device key. You will see the *LABEL Screen*, as shown on the next page.



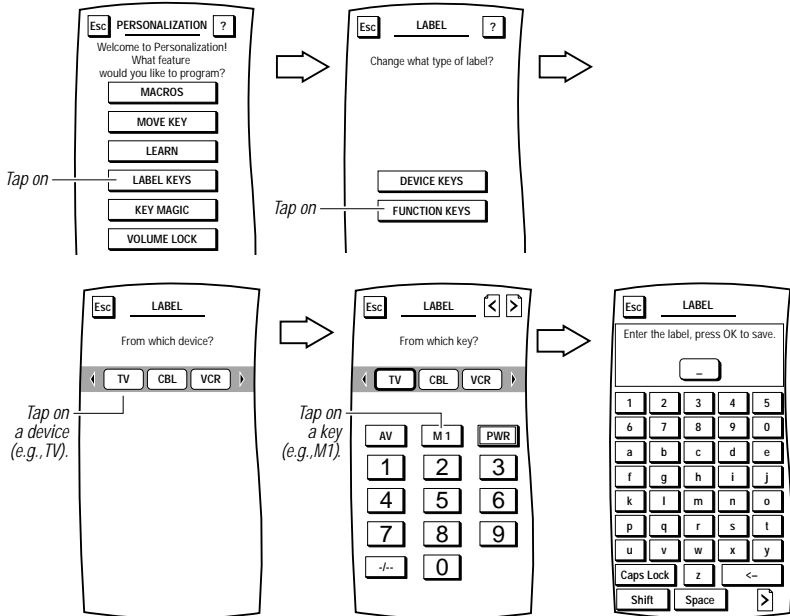
6. Enter a desired label using the alphanumeric keypad. Depending on the characters being entered, the label can be as short as one or as long as eight characters.
  - For uppercase letters, tap on the **SHIFT** or **CAPS LOCK** key.
  - To access the total of four pages of symbols, tap on the **Page Arrow** key.
  - Tap on the **SPACE** key to enter a space.
  - To reenter a character, tap on the **<-** key.
7. To save your device label, tap on the **OK** key. MOSAIC will show a confirmation message saying that the label was successfully programmed.

*NOTE: To return to a previous Menu, tap on the ESC key. To return to last-displayed Device Screen, press down on ESC or MUTE for at least 2 seconds.*

## LABELLING FUNCTION KEYS

1. On the *Device Screen* in the upper left corner, tap on **Setup**. You will see the main *SETUP Menu* that greets you and asks, "What would you like to configure?"
2. Tap on the **PERSONALIZATION** key. You will see the *PERSONALIZATION Menu*.

*NOTE: To return to a previous menu, tap on the ESC key. To return to last-displayed Device Screen, press down on ESC or MUTE for at least 2 seconds. For help, tap the ? key.*



3. Tap on the **LABEL KEYS** key. You will see the *LABEL Menu*.
4. Tap on the **FUNCTION KEYS** key. You will see the *Device Selection Strip*, and MOSAIC asks you to choose a device that contains the function key(s) you want to relabel.
5. Tap on a desired device key. You will see its *Device Screen*.
6. Tap on a desired function key. You will see the *LABEL Screen*.
7. Enter a desired label using the alphanumeric keypad. Depending on the characters being entered, the label can be as short as one or as long as eight characters.
  - For uppercase letters, tap on the **SHIFT** or **CAPS LOCK** key.
  - To access the total of four pages of symbols, tap on the **Page Arrow** key.
  - Tap on the **SPACE** key to enter a space.
  - To reenter a character, tap on the <-> key.
8. To save your function label, tap on the **OK** key. MOSAIC will show a confirmation message saying that the label was successfully programmed.

*NOTE: To return to a previous Menu, tap on the ESC key. To return to last-displayed Device Screen, press down on ESC or MUTE for at least 2 seconds.*

# KEY MAGIC

MOSAIC provides users with an alternative way to add functional codes to keys through our patented *Key Magic* feature. Although MOSAIC includes the world's largest infrared code library, you may find an advanced function that is not available on MOSAIC, yet still exists on your original remote control. Using *Key Magic* and our Web site (see *SYSTEM – ABOUT* on page 42), you can obtain a code that you can use to add the advanced feature to the device screen.

However, there are some considerations:

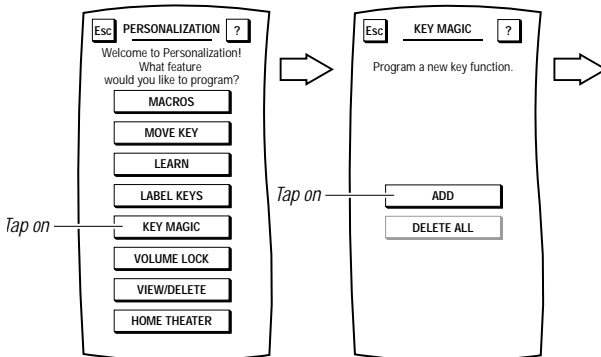
- Use the *Key Magic* feature if you don't have access to the original remote control. Otherwise, use *Learning* (see *LEARN* on page 22) and the original remote control to learn the missing function onto MOSAIC.
- A *Key Magic* key will always be rectangular even though the original version may be a different shape.
- A *Key Magic* key retains its original *Key Magic* number, but it can be relabelled.
- The *Key Magic* feature only works on IR function keys.

## ADDING A KEY MAGIC FUNCTION

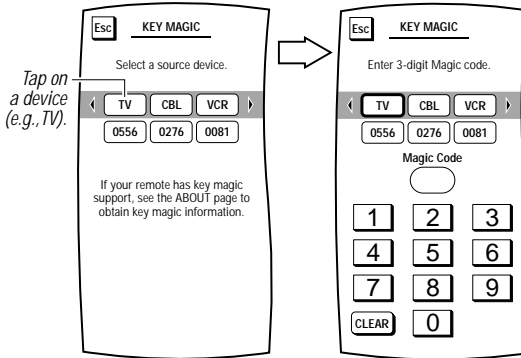
1. On the *Device Screen* in the upper left corner, tap on **Setup**. You will see the main *SETUP Menu* that greets you and asks, "What would you like to configure?"
2. Tap on the **PERSONALIZATION** key. You will see the *PERSONALIZATION Menu*.

*NOTE: To return to a previous menu, tap on the ESC key. To return to last-displayed Device Screen, press down on ESC or MUTE for at least 2 seconds. For help, tap the ? key.*

3. Tap on the **KEY MAGIC** key. You will see the *KEY MAGIC Menu*, as shown below.



4. Tap on the **ADD** key. You will see the *KEY MAGIC Device Selection Strip*.
5. Tap on a desired device. MOSAIC will ask you to enter the 3-digit Magic Code, as shown on the next page.
6. Make a note of the 4-digit code listed under the selected device and call our customer support group (see page 43). You will be supplied with the correct **3-digit** code for the function you want to add.



7. Using the keypad, enter the 3-digit code. MOSAIC will ask you to test the *Key Magic* function. Aim MOSAIC at the selected device and tap on the **TEST** key.
8. If the device responds correctly, tap on the **OK** key. You will see the *KEY MAGIC Device Selection Strip* and MOSAIC will ask on which device you want to store the new function.
9. Tap on a desired device. You will see its *Device Screen* and MOSAIC will ask on which key you want to store the new function.
10. To assign the function, tap on any desired key. To accept the change, tap on the **OK** key. MOSAIC will ask if you want to relabel the function key.
  - To relabel it, tap on the YES key and you will see the LABEL Menu (see explanation on page 25 step 6).
  - To keep the label the same, tap on the NO key.
11. You will see a confirmation screen that says the key has been successfully programmed. To program a function of the same type, tap on the **ESC** key. To return to the *Device Screen*, press on **ESC** or **MUTE** for at least 2 seconds.

## DELETING ALL KEY MAGIC FUNCTIONS

1. On the *Device Screen* in the upper left corner, tap on **Setup**. You will see the main *SETUP Menu* that greets you and asks, “*What would you like to configure?*”
2. Tap on the **PERSONALIZATION** key. You will see the *PERSONALIZATION Menu*.

*NOTE: To return to a previous menu, tap on the **ESC** key. To return to last-displayed Device Screen, press down on **ESC** or **MUTE** for at least 2 seconds. For help, tap the ? key.*

3. Tap on the **KEY MAGIC** key.
4. Tap on the **DELETE ALL** key. MOSAIC will ask you to confirm your choice.
  - To delete all Key Magic keys, tap on the **YES** key. You will see a confirmation screen that says all Key Magic keys have been successfully deleted. Tap on the **ESC** key to return to the *KEY MAGIC Screen*.
  - To cancel deletion of all Key Magic keys, tap on the **NO** key. MOSAIC will return to the *KEY MAGIC Screen*. If you want to delete a single Key Magic key, see *VIEW/DELETE* on page 32.

*NOTE: To return to a previous menu, tap on the **ESC** key. To return to last-displayed Device Screen, press down on **ESC** or **MUTE** for at least 2 seconds.*

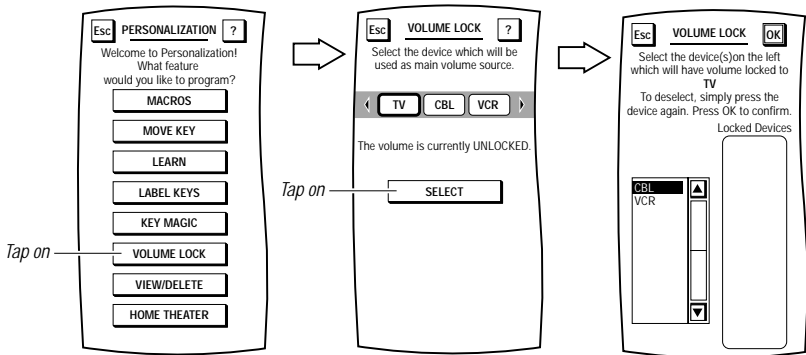
# VOLUME LOCK

In its default state, MOSAIC allows each device to control its own volume. However, using our *Volume Lock* feature, you can set MOSAIC to conveniently control volume of one or more devices (e.g., Cable Box and VCR) through a single device (e.g., TV).

1. On the *Device Screen* in the upper left corner, tap on **Setup**. You will see the main *SETUP Menu* that greets you and asks, "What would you like to configure?"
2. Tap on the **PERSONALIZATION** key. You will see the *PERSONALIZATION Menu*.

*NOTE: To return to a previous menu, tap on the ESC key. To return to last-displayed Device Screen, press down on ESC or MUTE for at least 2 seconds. For help, tap the ? key.*

3. Tap on the **VOLUME LOCK** key. You will see the *VOLUME LOCK Menu*.



4. On the *Device Selection Strip*, tap on the device you want as main volume source (e.g., **TV**) for a group of related devices (e.g., **VCR** and **CBL**). You will see a message stating that the TV volume is currently unlocked.

*NOTE: If the TV volume is locked, tap on another device or unlock the selected device (see "Unlocking the Volume" on page 31).*

5. Tap on the **SELECT** key. You will see the *Device VOLUME LOCK Menu*.
6. In the left column, tap on a device you want locked (e.g., **VCR**) to the main volume source (e.g., **TV**) originally selected in step 4. You will see the device (e.g., **VCR**) being added to the *Locked Devices* list on the right.

*NOTE: To remove a device from the Locked Devices list, tap again on the device in the left column.*

7. Repeat step 6 for each additional device (e.g., **CBL**) you want locked to the main volume source. If needed, use the scroll up/down arrows in the left column to view additional devices.
8. To save your selections, tap on the **OK** key. MOSAIC will show a confirmation message saying that your *Volume Lock* function was successfully programmed.

*NOTE: To return to the previous menu, tap on the ESC key. To return to last-displayed Device Screen, press down on ESC or MUTE for at least 2 seconds.*

## UNLOCKING THE VOLUME

1. On the *Device Screen* in the upper left corner, tap **Setup**. You will see the main *SETUP Menu* that greets you and asks, “*What would you like to configure?*”
2. Tap on the **PERSONALIZATION** key. You will see the *PERSONALIZATION Menu*.

*NOTE: To return to a previous menu, tap on the **ESC** key. To return to last-displayed Device Screen, press down on **ESC** or **MUTE** for at least 2 seconds. For help, tap the ? key.*

3. Tap on the **VOLUME LOCK** key. You will see the *VOLUME LOCK Menu*.
4. Tap on the **SELECT** key. You will see the *Device VOLUME LOCK Menu*.
5. In the left column, tap on a device you want unlocked from the main volume source. You will see the device being removed from the *Locked Devices* list on the right.
6. Repeat step 5 for each additional device you want unlocked from the main volume source. If needed, use the scroll up/down arrows in the left column to view additional devices.
7. To save your selections, tap on the **OK** key. MOSAIC will show a confirmation message saying that your *Volume Lock* function was successfully programmed.

*NOTE: To return to the previous menu, tap on the **ESC** key. To return to last-displayed Device Screen, press down on **ESC** or **MUTE** for at least 2 seconds.*



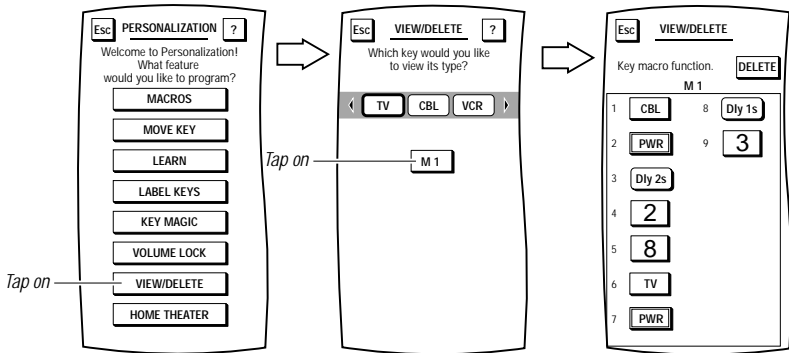
# VIEW/DELETE

To help you review what personalized changes have been made, MOSAIC includes a program that allows you to view the functions by device and to selectively delete any one.

1. On the *Device Screen* in the upper left corner, tap on **Setup**. You will see the main *SETUP Menu* that greets you and asks, "What would you like to configure?"
2. Tap on the **PERSONALIZATION** key. You will see the *PERSONALIZATION Menu*.

*NOTE: To return to a previous menu, tap on the **ESC** key. To return to last-displayed Device Screen, press down on **ESC** or **MUTE** for at least 2 seconds. For help, tap the ? key.*

3. Tap on the **VIEW/DELETE** key. You will see the *VIEW/DELETE Device Selection Strip*.



4. Tap on a desired device. You will see all personalized functions for the device. In the illustration above, **M1** is an example macro key that was created in the section, *Adding A Macro*, starting on page 12.
  5. The *View/Delete* program will list all *Macros* and *Moved, Learned, and Key Magic* keys. Tap on any key to view a description. In the following illustration, tapping on **M1** shows the recorded keys used to create the example macro key in *Adding A Macro*, starting on page 12.
- To delete a personalized function, tap on the **DELETE** key. MOSAIC will delete it and show a confirmation message saying that you have successfully programmed your personalization function.
  - To keep a personalized function, tap on the **ESC** or **MUTE** key. MOSAIC will return to the *View/Delete Screen*.

# HOME THEATER

Although you may think Home Theater is an independent device mode, it is actually a programmed composite of the most-frequently-used home-theater functions taken from the devices configured in MOSAIC. This composite screen is accessed via a dedicated soft key, labelled **THEATER**, at the top of all *Device Screens*. When it is tapped, MOSAIC will display your selected functions including any related macros.

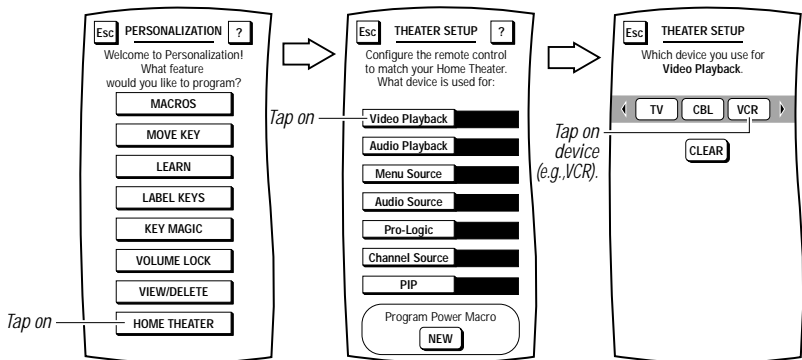
Home Theater also allows you to program a separate “Power On” macro that will power on all your favorite home theater devices with the tap of a single key.

## PROGRAMMING HOME THEATER DEVICES

1. On the *Device Screen* in the upper left corner, tap on **Setup**. You will see the main *SETUP Menu* that greets you and asks, “What would you like to configure?”
2. Tap on the **PERSONALIZATION** key. You will see the *PERSONALIZATION Menu*.

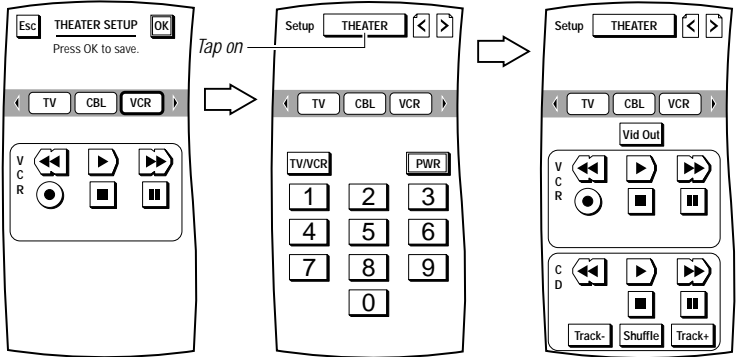
*NOTE: To return to a previous menu, tap on the **ESC** key. To return to last-displayed Device Screen, press down on **ESC** or **MUTE** for at least 2 seconds. For help, tap the ? key.*

3. Tap on the **HOME THEATER** key. You will see seven device categories listed in the *THEATER SETUP Menu*.



4. Tap on the **Video Playback** key. You will see the *THEATER SETUP Device Selection Strip*, as shown on the next page.
5. Tap on the device you want to set up as your video playback device (e.g., **VCR**). If you select a device that has a transport (e.g., **VCR**), necessary control keys will be added to the display. To make a different selection, tap on the **ESC** key and repeat this step.
6. To save your selection, tap on the **OK** key. MOSAIC will return to the *Theater Setup Screen*.
7. Repeat steps 4 through 6 for all remaining device categories. When you're finished, continue onto the next section to program a Home Theater “Power On” macro.

*NOTE: To return to a previous menu, tap on the **ESC** key. To return to last-displayed Device Screen, press down on **ESC** or **MUTE** for at least 2 seconds.*



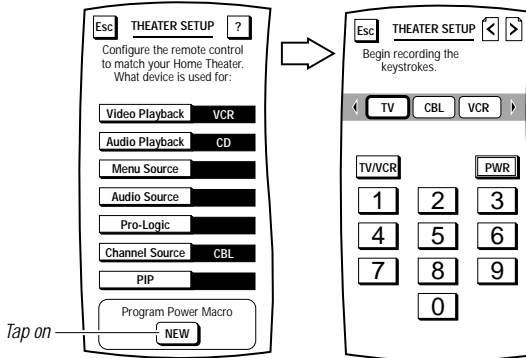
- If you want to test Home Theater, press down on **ESC** or **MUTE** for at 2 seconds to return to the last-displayed *Device Screen*. Then tap on the **THEATER** Key to see the composite screen (see example).

*NOTE: Depending on the devices you program, the Home Theater composite screen on your MOSAIC may look different than the one shown in the example above.*

## PROGRAMMING THE HOME THEATER POWER MACRO

- If necessary, perform steps 1 through 3 of the previous section (*Programming Home Theater Devices* on page 33) to view the *Theater Setup Menu*.
- In the *Program Power Macro sub-menu*, tap on the **NEW** key. You will see the *THEATER SETUP Device Selection Strip*.

*NOTE: Tapping on the NEW key will also override any previously-programmed Power Macro.*

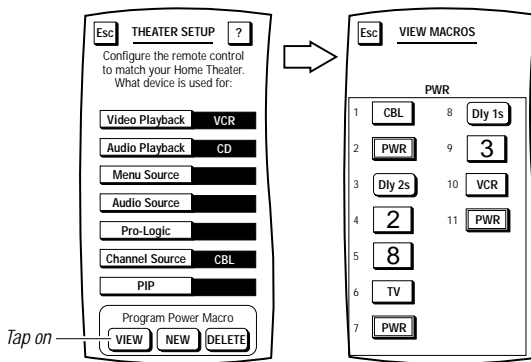


- Using a procedure similar to the one described in *Adding A Macro* (starting on page 12), tap on successive devices and their functions to program the macro.
- After you have programmed the macro, aim MOSAIC at your Home Theater system and tap on the **TEST** key. If the devices respond incorrectly, tap on the **CLEAR** key and repeat steps 3 and 4.

5. If the devices do respond correctly, then tap the **OK** key to save the macro. MOSAIC will ask you if you want to relabel the macro.
  - To relabel the macro, tap on the **YES** key. You will see the *THEATER SETUP Label Screen*. Follow the procedure that is similar to the one starting with step 3 on page 25 to relabel the macro and tap the **OK** key when you're done.
  - To keep the macro labelled as **PWR**, tap on the **NO** key.
6. MOSAIC will return to the *THEATER SETUP Menu*. To return to the *Personalization Menu*, tap on the **ESC** key. To return to the *Device Screen*, press on **ESC** or **MUTE** for at least 2 seconds.

## VIEWING THE HOME THEATER POWER MACRO

1. If necessary, perform steps 1 through 3 of *Programming Home Theater Devices* (on page 33) to view the *Theater Setup Menu*.
2. In the *Program Power Macro sub-menu*, tap on the **VIEW** key. You will see the *VIEW MACROS Menu* which will display the contents of the current Power Macro, as shown in the below example.
3. To return to the *Previous Menu*, tap on the **ESC** key. To return to the *Device Screen*, press on **ESC** or **MUTE** for at least 2 seconds.



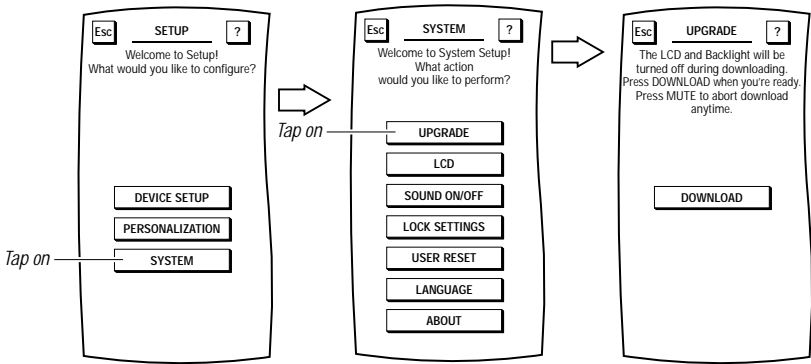
## DELETING THE HOME THEATER POWER MACRO

1. If necessary, perform steps 1 through 3 of *Programming Home Theater Devices* (on page 33) to view the *Theater Setup Menu*.
2. In the *Program Power Macro sub-menu*, tap on the **DELETE** key. MOSAIC will clear the current Power Macro and display a **NEW** key to create a new macro.

# System

## UPGRADE

Although MOSAIC includes the world's largest infrared code library (which is compatible with virtually every infrared device being made), there may come a time when MOSAIC will require an upgrade, especially when you purchase a new device. Fortunately, MOSAIC includes electro-magnetic coupling technology that allows downloading by modem for an "in home" consumer upgrade using your PC speakers or telephone. For help upgrading your MOSAIC: <http://www.oneforall.com>.



# LCD

After MOSAIC has been used a while, a soft key may no longer produce a response when you tap inside a key's boundary, yet it still works when you tap outside it. To compensate for this drift, MOSAIC includes a utility program that you can use to align the LCD back to factory specifications.

1. On the *Device Screen* in the upper left corner, tap on **Setup**. You will see the main *SETUP Menu* that greets you and asks, "What would you like to configure?"

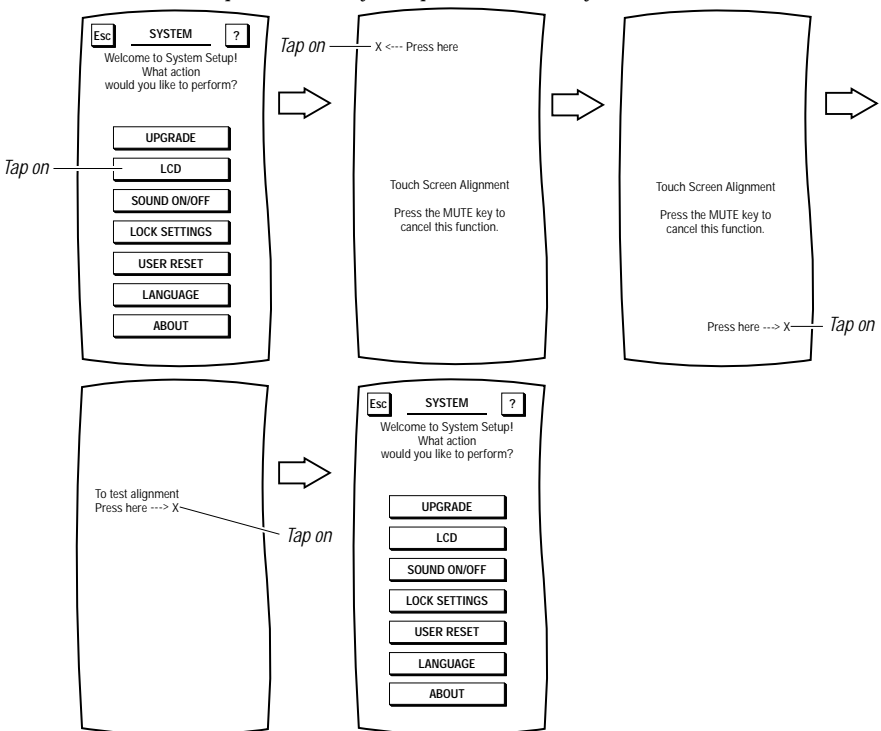
*NOTE: If the LCD is so misaligned, if by tapping on Setup you do not see the main SETUP Menu, skip steps 1 through 3 and instead press the CH-, MUTE, and VOL + hard keys, all at the same time. This will cause MOSAIC to go directly to the LCD Alignment Menu. Then start with step 4 on the next page.*

2. Tap on the SYSTEM key. You will see the SYSTEM Menu.

*NOTE: To return to a previous menu, tap on the ESC key. To return to last-displayed Device Screen, press down on ESC or MUTE for at least 2 seconds. For help, tap the ? key.*

3. Tap on the LCD key. You will see the LCD Alignment Menu. Following the instructions, tap on the X on each of the three screens shown below. When the procedure is complete, the LCD will be aligned and MOSAIC will return to the *System Menu*.

*NOTE: To cancel the procedure at anytime, press the MUTE key.*

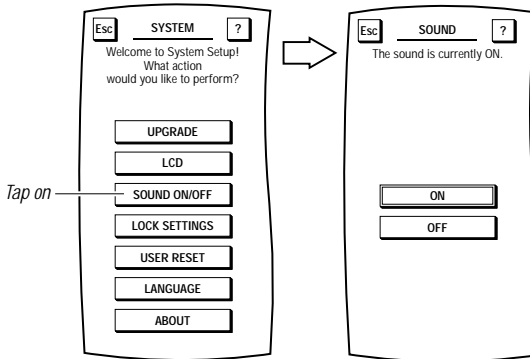


## SOUND ON/OFF

MOSAIC is set at the factory to emit a beep and blink the LED each time you tap a key. To turn the beep sound off (or back on), perform the following procedure:

1. On the *Device Screen* in the upper left corner, tap on **Setup**. You will see the main *SETUP Menu* that greets you and asks, "What would you like to configure?"
2. Tap on the **SYSTEM** key. You will see the *SYSTEM Menu*.

*NOTE: To return to a previous menu, tap on the ESC key. To return to last-displayed Device Screen, press down on ESC or MUTE for at least 2 seconds. For help, tap the ? key.*



3. Tap on the **SOUND ON/OFF** key. You will see the *SOUND Menu* with the current setting denoted by a thicker outline.
- To turn off the beep sound, tap on the **OFF** key. MOSAIC will turn off the beep sound and return to the *System Menu*.
  - To turn on the beep sound, tap on the **ON** key. MOSAIC will turn on the beep sound and return to the *System Menu*.

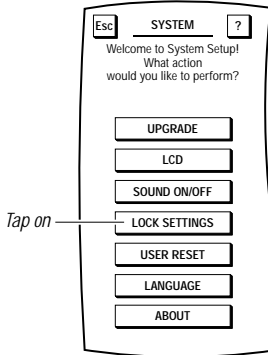
*NOTE: As an additional low-battery warning, MOSAIC will emit a beep sound even if the sound is turned off (see page 3).*

# LOCK SETTINGS

MOSAIC is set at the factory with settings unlocked. After setting up MOSAIC, we recommend locking the new settings to keep them from being inadvertently erased or changed.

1. On the *Device Screen* in the upper left corner, tap on **Setup**. You will see the main *SETUP Menu* that greets you and asks, "What would you like to configure?"
2. Tap on the **SYSTEM** key. You will see the *SYSTEM Menu*.

*NOTE: To return to a previous menu, tap on the **ESC** key. To return to last-displayed Device Screen, press down on **ESC** or **MUTE** for at least 2 seconds. For help, tap the ? key.*



3. Tap on the **LOCK SETTINGS** key. You will see the *LOCK SETTINGS Menu* with the current setting denoted by a thicker outline.
- To lock the settings, tap on the **LOCK** key. MOSAIC will lock the settings and return to the last-displayed *Device Screen*.
  - To unlock the settings, tap on the **UNLOCK** key. MOSAIC will unlock the settings and return to the *SYSTEM Menu*.



# USER RESET

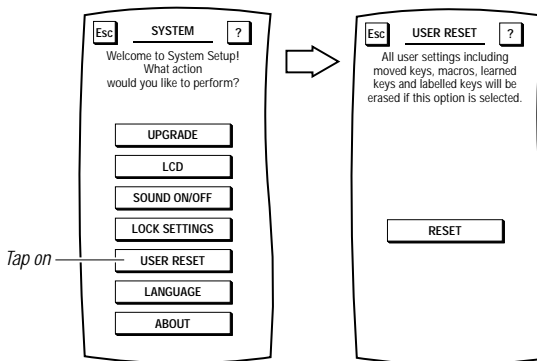
If you have updated your entertainment devices or want to completely start over, MOSAIC offers a user reset function so you can clear settings using a single command.

**IMPORTANT:** *User Reset does not affect downloaded codes or Device Setup settings. To reset only all user settings including Macros, Moved Keys, Learned Keys, Labelled Keys, and Key Magic functions, as well as all settings for Home Theater, Sound On/Off, Volume Lock, and Lock to their original default values, perform the following steps:*

1. On the *Device Screen* in the upper left corner, tap on **Setup**. You will see the main *SETUP Menu* that greets you and asks, "What would you like to configure?"
2. Tap on the **SYSTEM** key. You will see the *SYSTEM Menu*.

*NOTE:* To return to a previous menu, tap on the **ESC** key. To return to last-displayed Device Screen, press down on **ESC** or **MUTE** for at least 2 seconds. For help, tap the **?** key.

3. Tap on the **USER RESET** key. You will see the *USER RESET Menu*.



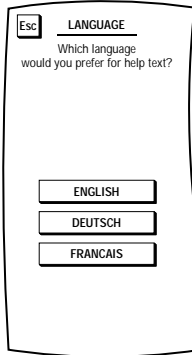
4. To erase all user settings, tap on the **RESET** key. You will hear a beep as MOSAIC clears all settings. After a few seconds, MOSAIC will show a confirmation message saying that you have successfully programmed your personalization function.

*NOTE:* To return to a previous Menu, tap on the **ESC** key. To return to last-displayed Device Screen, press down on **ESC** or **MUTE** for at least 2 seconds.

# LANGUAGE

The "Help text" (*? key*) can be displayed in three languages.

1. *Tap on the **Setup** key.*
2. *Tap on **SYSTEM**.*
3. *Tap on **LANGUAGE**.*



4. *Tap on the language that you wish to select for the "help text".*

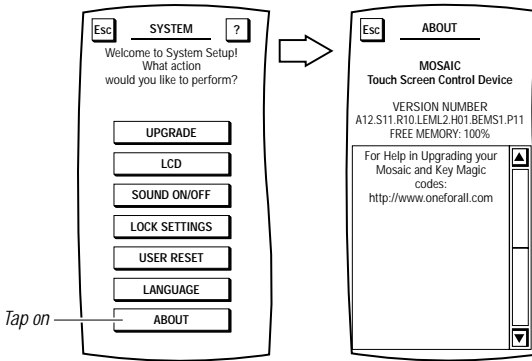
# ABOUT

The *About Screen* lists MOSAIC's software version, the amount of free memory, and contact information for additional help.

1. On the *Device Screen* in the upper left corner, tap on **Setup**. You will see the main *SETUP Menu* that greets you and asks, "What would you like to configure?"
2. Tap on the **SYSTEM** key. You will see the *SYSTEM Menu*.

*NOTE: To return to a previous menu, tap on the ESC key. To return to last-displayed Device Screen, press down on ESC or MUTE for at least 2 seconds. For System help, tap the ? key.*

3. Tap on the **ABOUT** key. You will see the *ABOUT Menu*.



# Customer Service

If you still have questions about the operation of your One For All MOSAIC universal remote and you could not find the answer(s) in the manual, you may want to contact the customer service department for assistance.

You may care to visit our Internet-site: **www.oneforall.com**

- 24 hours access
- page for Frequently Asked Questions
- no waiting time
- info about the ONE FOR ALL product range

**Before contacting us, by Fax, E-mail or Phone, make sure you have the required information available by filling in the table below.**

Model : URC-9990                      Date of purchase (.....-.....-.....)

Helpcode(*)	Device	Brand	Device	Remote model nr.	SET-UP model nr. code
1910805	TV	Sony	KVX-2950B	RMT-V131B	0505 (example)

In the UK  
 e-mail: ofahelp@uebv.com  
 fax: +31 53 432 9816  
 tel.: 0808-1000306(\*)

In Ireland  
 e-mail : ofahelp@uebv.com  
 fax: +31 53 432 9816  
 tel.: 1-800 553199 (\*)

In Australia  
 e-mail: ofahelp@uebv.com  
 fax: +31 53 432 9816  
 tel.: 1-800 064472

In South Africa  
 e-mail: support@oneforall.co.za  
 fax: 011 298 2302  
 tel.: 0860 100551 / tel.: 011 298 2300

In New Zealand  
 e-mail: ofahelp@uebv.com  
 fax: (06) 878 2760  
 tel.: 0508 ONE 4 ALL (663 4 255)

(\*) When you call us you will be asked to enter your helpcode(s). You only have to enter the helpcode(s) of those devices you have a problem with.

The helpcode is a 7-digit code, which defines the ONE FOR ALL-model you have, the device type and the brand of your device. This helpcode can be found in the first column of the setup code list.

---

---

## Televisions

---

---

## Fernseher

---

---

## Téléviseurs

---

---

1910991	A.R. Systems	0037		
1911306	Accent	0037		
1912089	Acec	0012		
1910010	Admiral	0087	0093	0418
		0264		
1910012	Adyson	0217	0216	
1911080	Agashi	0216	0264	
1910015	AGB	0516		
1910997	Agef	0087		
1910017	Aiko	0216	0009	0037
		0371	0433	0072
		0361	0191	0264
		0217		
1910018	Aim	0037		
1910020	Akai	0361	0208	0371
		0037	0433	0191
		0009	0072	0218
		0163	0516	0602
		0556	0581	0480
		0217	0631	0216
		0264	0448	0178
1910021	Akiba	0377	0606	
		0218	0282	0455
		0037		
1910022	Akito	0037		
1910023	Akura	0218	0282	0009
		0412	0264	0037
		0493	0668	
1911267	Alaron	0216		
1910024	Alba	0218	0235	0009
		0418	0370	0355
		0371	0037	0216
		0247	0163	0581
		0487	0036	0668
		0579		
1910029	Allorgan	0206	0294	0217
1910032	Allstar	0037		
1910041	Amplivision	0217	0400	0370
1910042	Amstrad	0177	0009	0516
		0264	0218	0371
		0433	0412	0037
		0648		
1911094	Anam	0037	0009	
1911268	Anam National	0037		
1910044	Anglo	0009	0264	
1910045	Anitech	0009	0264	0037
1910047	Ansonic	0370	0292	0102
		0009	0037	0374
		0163	0411	0259
		0247	0012	
1910050	Apollo	0473		
1910053	Arc en Ciel	0109	0196	0198
1910054	Arcam	0216	0217	
1911307	Ardem	0486		
1910057	Aristona	0037	0556	0012

1910059	Arthur Martin	0163	0400	
1910060	ASA	0105	0346	0070
		0104	0087	
1910062	Asberg	0037		
1911095	Asora	0009		
1910070	Asuka	0218	0264	0216
		0282	0217	
1910072	Atlantic	0037	0216	0206
		0259		
1910074	Atori	0009		
1910075	Auchan	0163	0400	
1910080	Audiosonic	0037	0109	0217
		0370	0264	0218
		0486		
1910081	Audioton	0217	0486	0370
		0264		
1910085	Autovox	0087	0206	0217
		0247	0336	
1911156	AWA	0011	0036	0009
		0374	0412	0037
		0216	0606	
1911081	Ayomi	0238		
1910091	Baird	0109	0193	0190
		0072	0073	0217
		0208		
1910093	Bang & Olufsen	0565	0087	
1910094	Barco	0163		
1910097	Basic Line	0218	0009	0374
		0037	0163	0282
1910098	Bastide	0217		
1910099	Baur	0303	0195	0512
		0037	0191	0361
		0505	0010	
1911082	Bazin	0217		
1911079	Beaumark	0178		
1910103	Beko	0370	0486	0037
		0606		
1910105	Beon	0037	0418	
1910106	Best	0370		
1910107	Bestar	0037	0370	0374
1910108	Binatone	0217		
1910110	Black Star	0247		
1910111	Blacktron	0282		
1910112	Blackway	0282		
1910113	Blaupunkt	0191	0195	0200
		0327	0328	0448
1910114	Blue Sky	0218	0282	0455
		0037	0487	0668
1910115	Blue Star	0282		
1910118	Bondstec	0247		
1910119	Boots	0217		
1910121	BPL	0282	0037	
1910123	Brandt	0109	0196	0198
		0335	0625	
1910126	Brinkmann	0418	0037	
1911030	Brionvega	0037	0087	
1910128	Britannia	0216	0217	
1911444	Brother	0264		
1910133	Bruns	0087		
1910134	BSR	0163	0294	
1910138	BTC	0218		

1910139	Bush	0218 0235 0163	1910220	Desmet	0037
		0009 0036 0282	1911000	Diamant	0037
		0037 0355 0371	1911310	Digiline	0037
		0374 0264 0361	1910232	Dixi	0009 0037 0247
		0487 0208 0581			0217
		0294 0217 0668	1911255	Drean	0037
1910149	Capsonic	0264	1910239	DTS	0009
1911455	Carad	0610 0037	1910240	Dual	0217 0259 0336
1910150	Carena	0455 0037			0037 0303 0163
1910151	Carrefour	0036 0070	1910243	Dumont	0087 0104 0102
1910153	Carver	0170			0217 0070 0072
1910998	Cascade	0009 0037	1911162	Dux	0037 0012
1910154	Casio	0037	1910247	Dynatron	0037
1910155	Cathay	0037	1910252	Elbe	0435 0238 0259
1911231	CCE	0037 0217			0292 0370 0163
1910160	Centurion	0037			0037 0218 0191
1910161	Century	0087 0247 0238			0411 0610
1910162	CGE	0074 0084 0247	1910254	Elcit	0087 0247 0516
		0163 0418 0370			0102 0163
1910167	Cimline	0009 0235 0218	1910255	Elekta	0264 0282
1910169	City	0009	1912093	ELG	0037
1911073	Clarivox	0418 0070	1910259	Elin	0216 0037 0105
1910172	Clatronic	0218 0264 0370			0104 0361 0448
		0371 0217 0247			0163 0009
		0037 0009 0102	1910260	Elite	0218 0037
		0579	1910261	Elman	0102
1911308	CMS hightec	0217	1910263	Elta	0009 0264 0216
1910186	Concorde	0009	1910265	Emerson	0177 0087 0178
1910187	Condor	0216 0247 0282			0247 0037 0371
		0037 0370 0009			0070 0282
		0102 0411 0418	1910267	Emperor	0282
1910191	Contec	0216 0009 0011	1910271	Erres	0037 0012
		0036	1910272	ESC	0037
1910192	Continental		1910273	Etron	0037 0009 0163
	Edison	0109 0196 0198	1911632	Eurofeel	0264
		0487	1910278	Euroman	0216 0264 0037
1910194	Cosmel	0009			0217 0370
1910196	Crosley	0087 0247 0074	1910279	Europa	0037
		0084 0163	1910280	Europhon	0037 0516 0102
1910197	Crown	0009 0370 0486			0217 0247 0163
		0037 0579 0418	1910291	Expert	0206 0400 0259
		0208 0487 0053			0163
1910200	CS Electronics	0247 0216 0218	1911001	Exquisit	0037 0247
1910201	CTC	0247	1910294	Fenner	0374 0009
1910202	Curtis Mathes	0093 0166	1910296	Ferguson	0073 0190 0335
1910203	Cybertron	0218			0238 0193 0109
1910205	Daewoo	0009 0037 0216			0625
		0374 0218 0217	1910299	Fidelity	0193 0216 0371
		0624			0163 0264 0037
1910206	Dainichi	0218 0216	1911164	Filsai	0217
1910207	Dansai	0037 0264 0216	1910301	Finlandia	0208 0346 0361
		0009	1910302	Finlux	0105 0104 0037
1911160	Dansette	0412			0346 0217 0072
1911083	Dantax	0370 0486			0163 0516 0070
1911102	Datsura	0208			0087 0102 0411
1910209	Dawa	0037			0631 0480
1910210	Daytron	0009 0374 0037	1910304	Firstline	0294 0321 0216
1910216	de Graaf	0208 0044 0163			0037 0374 0247
1910214	Decca	0072 0516 0037			0009 0163 0102
		0217			0217 0411 0238
1911459	Deitron	0037			0072 0235 0668
1910999	Denko	0264			0208 0624
1911103	DER	0193 0190			

1910305 Fisher 0104 0217 0036  
0208 0370 0045  
0087 0361 0163  
0303 0072  
1910307 Flint 0037 0455 0072  
0218  
1911002 FNR 0102  
1910308 Forgestone 0193  
1910309 Formenti 0087 0216 0163  
1910310 Fortress 0093 0087  
1910313 Fraba 0370 0037  
1911106 Friac 0009 0037 0102  
1910319 Frontech 0247 0264 0448  
0217 0009  
1910322 Fujitsu 0206 0072 0102  
0217 0163 0009  
1911457 Fujitsu General 0009 0217  
1910323 Funai 0264 0294  
1910326 Galaxi 0102 0037  
1910327 Galaxis 0370 0418 0037  
0102  
1910331 GBC 0163 0009 0374  
0218  
1910333 GE 0109 0178 0282  
0335  
1911003 Geant Casino 0163 0400  
1910335 GEC 0072 0163 0361  
0516 0037 0217  
1910336 Geloso 0247 0009 0163  
0374  
0109  
1910337 General  
1910338 General  
Technic 0009  
1910339 Genexxa 0218 0037 0412  
0493  
1910345 Goldhand 0216  
1910347 GoldStar 0037 0370 0290  
0009 0377 0217  
0247 0216 0163  
0178 0361 0044  
1910349 Goodmans 0036 0072 0037  
0009 0264 0516  
0290 0374 0487  
0371 0556 0235  
0480 0217 0624  
0335  
1910350 Gorenje 0370  
1910351 GPM 0218  
1911248 Gradiente 0037 0053 0170  
1910352 Graetz 0361 0371  
1910353 Granada 0037 0400 0226  
0356 0012 0045  
0072 0108 0208  
0217 0036 0516  
0473 0335  
1910354 Grandin 0282 0218 0400  
0037 0009 0163  
0455 0579 0610  
1911107 Gronic 0102 0217  
1910355 Grundig 0195 0191 0487  
0070 0037 0556  
1910359 Halifax 0264 0216 0217  
1910360 Hampton 0216 0217

1911108 Hanimex 0294  
1910362 Hanseatic 0037 0292 0282  
0163 0361 0370  
0009 0294 0217  
0087  
1910363 Hantarex 0009 0037 0102  
1910364 Hantor 0037  
1911084 Harwood 0009 0412 0037  
1911678 Hauppauge 0037  
1910370 HCM 0264 0009 0282  
0412 0217 0218  
0418 0037  
1910372 Hema 0217 0009  
1910374 Hifivox 0109 0196  
1911682 Highline 0264 0037  
1911110 Hikona 0218  
1910377 Hinari 0208 0036 0037  
0218 0009 0163  
0355 0443 0487  
0235 0294  
1910380 Hisawa 0282 0218 0400  
0455  
1911004 Hit 0087  
1910381 Hitachi 0225 0036 0356  
0044 0473 0163  
0578 0196 0198  
0217 0194 0516  
0072 0481 0037  
0563 0105 0178  
0556  
1911684 Hitachi Fujian 0108  
1911170 Hitsu 0009 0455 0218  
1911085 Hornophone 0037 0012  
1910384 Hoshai 0218 0455  
1911086 Huanyu 0374 0216  
1910388 Hygashi 0217 0216  
1910389 Hyper 0009 0216 0217  
0247  
1910390 Hypersonic 0361  
1910391 Hypson 0037 0264 0217  
0282 0455 0400  
0238  
1911005 Iberia 0037  
1910393 ICE 0264 0217 0037  
0371 0218 0216  
0009  
1911006 Ices 0218 0216  
1910395 Imperial 0037 0247 0370  
0418 0163 0074  
0084 0196  
1910397 Indiana 0037  
1911343 Ingelen 0487 0610  
1910398 Ingersoll 0009  
1910401 Inno Hit 0009 0072 0037  
0218 0290 0217  
0516 0247  
1911312 Interactive 0411  
1910404 Interbuy 0009 0264 0247  
1910405 Interfunk 0037 0012 0087  
0512 0327 0163  
0361 0370 0109  
1911113 Internal 0037

1910408	Intervision	0282 0217 0455 0037 0371 0377 0448 0486 0370 0487 0218 0102 0163 0264 0247		1911008	Liesenkotter	0037 0327 0328 0012	
1910410	Irradio	0009 0037 0218 0247 0290		1910463	Lifetec	0009 0264 0037 0374 0218 0668 0512	
1910412	Isukai	0218 0037 0282		1911240	Lloyd's	0009	
1910413	ITC	0217		1910472	Loewe	0512 0037 0087 0292 0370	
1910414	ITS	0037 0371 0218 0282 0264 0216 0163 0480 0361 0473 0193 0346 0208		1910474	Logik	0011 0193 0371	
1910415	ITT			1911456	Logix	0668	
1910416	ITT Nokia	0361 0163 0473 0480 0346 0208 0606 0610 0631		1910478	Luma	0206 0037 0163 0259 0411 0374 0009	
1910417	ITV	0264 0037 0247		1911009	Lumatron	0206 0037 0163 0259 0361 0217 0264 0073	
1911314	Jean	0036		1910481	Lux May	0037 0009	
1910425	JVC	0653 0053 0094 0190 0036 0193 0371 0218 0606		1910485	Luxor	0194 0290 0480 0361 0208 0356 0163 0346 0473	
1910427	Kaisui	0218 0282 0037 0216 0455 0217 0009		1911241	LXI	0178	
1910428	Kamp	0216		1911316	Madison	0037	
1910429	Kapsch	0206 0163 0361 0259 0104		1910490	Magnadyne	0087 0247 0516 0102 0163	
1910430	Karcher	0037 0370 0282 0102 0610 0264		1910491	Magnafon	0516 0102 0216	
1911283	Kawasho	0216		1910492	Magnavox	0036 0037	
1911177	KB Aristocrat	0163		1911071	Magnum	0648	
1910432	Kendo	0235 0247 0102 0037 0370 0411 0610 0377		1910495	Mandor	0264	
1910433	Kennedy	0206 0163 0435		1910496	Manesth	0037 0235 0217 0264 0294	
1910437	Kingsley	0216		1910497	Manhattan	0037 0668	
1910438	Kneissel	0435 0259 0292 0370 0238 0037 0411 0610		1910500	Marantz	0037	
1910441	Kolster	0037 0102		1910503	Marelli	0087	
1910442	Konka	0218 0371 0037		1910504	Mark	0037 0217 0216 0374 0009	
1911315	Kontakt	0487		1911342	Masuda	0218 0009 0371 0235 0177 0009	
1910443	Korpel	0037		1910508	Matsui	0355 0011 0072 0036 0037 0556 0487 0217 0294 0371 0433 0443	
1910444	Korting	0087 0370		1910517	Mediator	0037 0556 0012	
1910445	Kosmos	0037		1910518	Medion	0037 0668	
1911181	Kotron	0412 0264		1911121	Megas	0610	
1911350	Kraking	0238		1911291	Megatron	0178	
1911287	KTV	0217		1910487	Melectronic	0346 0037 0512 0109 0247 0105 0104 0374 0009 0217 0480 0216 0411	
1911117	Kyoshu	0264 0412 0418		1911010	Melvox	0400	
1910451	Kyoto	0163		1910520	Memorex	0009 0178 0250	
1911451	Lemair	0411		1910521	Memphis	0072 0009	
1910454	Lenco	0009 0104 0163 0037		1910522	Mercury	0037 0009	
1910456	Lenoir	0009		1910525	Metz	0087 0195 0191 0367	
1910458	Lesa	0247		1910526	MGA	0178	
1910461	Leyco	0264 0072 0037 0294 0579		1911317	Micromaxx	0037 0668	
1911072	LG	0037 0370 0290 0009 0377 0217 0247 0216 0163 0178 0361		1910531	Minerva	0487 0195 0070 0191	



1910532 Minoka 0412 0037  
 1910535 Mitsubishi 0108 0512 0037  
 0093 0178 0087  
 0036 0193  
 1910538 Mivar 0292 0290 0291  
 0370 0216  
 1911186 Monaco 0009  
 1910540 Morgan's 0037  
 1911297 Motorola 0093  
 1910543 MTC 0370 0512 0216  
 1911187 Multibroadcast 0193  
 1910545 Multistandard 0102  
 1911452 Multitec 0037 0668  
 1910547 Multitech 0217 0009 0216  
 0247 0102 0486  
 0370 0037  
 1910551 Murphy 0104 0216 0072  
 0163  
 1911791 Musikland 0218  
 1910553 NAD 0361 0166 0178  
 1911124 Naiko 0037  
 1911125 Nakimura 0374 0037  
 1912099 NAT 0226  
 1910562 National 0226  
 1910564 NEC 0170 0036 0455  
 0009 0374 0217  
 0037 0011  
 1910565 Neckermann 0037 0191 0370  
 0505 0010 0200  
 0556 0163 0327  
 0418 0087 0247  
 0217 0411  
 1910566 NEI 0037 0371  
 1910567 Nesco 0247  
 1911292 Netsat 0037  
 1911012 Neufunk 0037 0009 0556  
 0610  
 1910572 New Tech 0037 0009 0556  
 0217 0448  
 1910571 New World 0218  
 1910574 Nicamagic 0216  
 1910576 Nikkai 0072 0218 0037  
 0217 0264 0216  
 0009 0036  
 0178  
 1910577 Nikko 0037 0264  
 1911249 Noblex 0102 0070 0216  
 1910578 Nobliko 0109 0196  
 1910579 Nogamatic 0361 0163 0480  
 0473 0208 0374  
 0631 0606 0346  
 1910582 Nordmende 0109 0196 0198  
 0195 0037 0335  
 0037 0105 0374  
 1911013 Novatronic 0163 0400 0361  
 1910588 Oceanic 0294 0208 0563  
 0264  
 1912100 Odeon 0370 0037 0264  
 0072  
 1910590 Okano 0264  
 1911014 Omega 0371 0218 0433  
 1910595 Onwa 0581  
 1910596 Opera 0037

1910598 Optimus 0250 0166  
 1911299 Optonica 0093  
 1910599 Orbit 0037  
 1910602 Orion 0235 0294 0177  
 0355 0011 0037  
 0009 0321 0102  
 0443 0556 0264  
 0412  
 1911015 Orline 0037 0218  
 1911192 Ormond 0668  
 1910605 Osaki 0072 0218 0217  
 0264 0493 0037  
 0412 0374  
 1911193 Osio 0037  
 1910607 Oso 0218  
 1910608 Osume 0072 0036 0218  
 1910610 Otto Versand 0010 0505 0036  
 0093 0512 0037  
 0556 0195 0191  
 0361 0235 0109  
 0294 0226 0247  
 0303 0217  
 1910614 Pael 0216  
 1910616 Palladium 0370 0037 0191  
 0505 0010 0200  
 0418 0556 0247  
 0327 0087 0163  
 0217 0411  
 1911129 Palsonic 0264 0412 0037  
 0217 0377  
 1910619 Panama 0009 0217 0264  
 0216 0037 0247  
 1910620 Panasonic 0226 0650 0250  
 0126 0361 0367  
 0516 0037 0163  
 1910622 Panavision 0037 0411  
 1910628 Pathe Cinema 0163 0238 0216  
 0400 0292  
 1910629 Pathe Marconi 0109 0196 0198  
 1910631 Pausa 0009  
 1910632 Perdio 0072 0163 0037  
 1910633 Perfekt 0037  
 1911460 Pershin 0400  
 1910634 Philco 0087 0084 0074  
 0418 0247 0163  
 0370 0037  
 1910635 Philharmonic 0217  
 1910636 Philips 0037 0556 0012  
 0191 0087 0193  
 0374  
 1910639 Phoenix 0037 0087 0486  
 0370 0216 0163  
 0072  
 1910640 Phonola 0037 0556 0012  
 0087 0193 0216  
 1910642 Pioneer 0166 0037 0370  
 0361 0109  
 1911132 Pionier 0370 0486  
 1910644 Plantron 0037 0264 0009  
 1911066 Playsonic 0217  
 1910647 Poppy 0009  
 1910648 Portland 0374  
 1911846 Powerpoint 0487

1910650 Prandoni-Prince 0247 0516 0361  
 1910651 Precision 0217  
 1910655 Prima 0009 0264  
 1910656 Prinz 0072 0194  
 1910658 Profex 0009 0163  
 1910660 Profitronic 0037 0102  
 1910662 Proline 0321 0072 0037  
 0012 0625  
 1910664 Prosonic 0037 0216 0370  
 0374 0579 0371  
 0668  
 1910665 Protech 0037 0217 0009  
 0247 0102 0264  
 0418 0668  
 1910667 Proton 0178  
 1910669 Provision 0037  
 1910672 Pye 0037 0374 0556  
 0012 0087  
 1910673 Pymi 0009  
 1911067 Quadra Vision 0400  
 1910677 Quasar 0247 0250  
 1910678 Quelle 0037 0010 0011  
 0109 0512 0191  
 0361 0036 0217  
 0247 0074 0084  
 0327 0070 0104  
 0105 0195 0200  
 0264 0290 0668  
 1910679 Questa 0036  
 1910680 R-Line 0037  
 1910682 Radialva 0109 0218 0163  
 0037  
 1910684 Radiola 0037 0556 0012  
 1910685 Radiomarelli 0087 0516 0247  
 0037  
 1911088 RadioShack 0037 0178  
 1910686 Radiotone 0009 0037 0370  
 0579 0418 0264  
 0412 0648  
 1910690 Rank 0070  
 1910691 RCA 0625 0335 0093  
 1910693 Realistic 0178  
 1911016 Recor 0037  
 1912101 Rectiligne 0037  
 1910695 Rediffusion 0361 0036  
 1911017 Redstar 0037  
 1911018 Reflex 0037  
 1910698 Revox 0037 0370  
 1910699 Rex 0206 0411 0247  
 0163 0259  
 1910700 RFT 0087 0292 0370  
 0072 0264  
 1911338 Rhapsody 0216  
 1910701 Roadstar 0009 0264 0218  
 0418 0037  
 1910703 Robotron 0087  
 1911197 Roxy 0448  
 1910711 Royal Lux 0370 0412  
 1910715 Saba 0087 0163 0109  
 0516 0361 0196  
 0198 0335 0625  
 1910718 Sagem 0455 0610 0282

1910720 Saisho 0235 0516 0177  
 0009 0011 0217  
 0163 0264  
 1910722 Salora 0290 0194 0163  
 0356 0361 0516  
 1910723 Sambers 0516 0102  
 1910724 Samsung 0037 0556 0587  
 0009 0217 0178  
 0448 0370 0264  
 0216 0290 0072  
 0208 0644  
 1910726 Sandra 0216 0217  
 1911139 Sanela 0238  
 1910727 Sansui 0037 0371  
 1912102 Santon 0009  
 1910729 Sanyo 0208 0292 0036  
 0011 0370 0072  
 0216 0217 0104  
 0045 0009 0163  
 0037  
 1911318 Save 0037  
 1910743 SBR 0037 0556 0012  
 1910745 Schaub Lorenz 0606  
 1910746 Schneider 0037 0556 0012  
 0303 0336 0259  
 0217 0247 0371  
 0218 0361 0163  
 0668 0648  
 1910750 Scott 0178  
 1911324 Sears 0178  
 1910753 SEG 0217 0264 0009  
 0247 0036 0102  
 0163 0037 0216  
 0668 0487  
 1910754 SEI 0087 0102 0010  
 0163 0516 0294  
 0206 0037  
 1910756 Seleco 0206 0259 0163  
 0411  
 1910757 Sencora 0009  
 1910759 Sentra 0218 0009  
 1911265 Serie Dorada 0178  
 1911019 Serino 0455 0610  
 1910762 Sharp 0093 0036 0294  
 0653 0053 0094  
 0193  
 1910769 Shorai 0294  
 1911263 Siam 0037  
 1910772 Siarem 0163 0087 0102  
 1910773 Siemens 0191 0200 0195  
 0327 0328 0037  
 1911916 Siera 0037 0556 0012  
 1910776 Siesta 0370  
 1910780 Silva 0216 0037  
 1910781 Silver 0036 0361  
 1910782 Singer 0087 0102 0247  
 0400 0435 0009  
 0037  
 1910783 Sinudyne 0177 0087 0235  
 0102 0294 0163  
 0361 0516 0010  
 0206 0037  
 1910784 Skantic 0356

1911298 Sky 0037  
 1910797 Solavox 0361 0072 0163  
 1911927 Sonawa 0218  
 1910801 Sonitron 0208 0370 0217  
 1911035 Sonneclair 0037  
 1910802 Sonoko 0037 0009 0264  
                   0282 0217  
 1910803 Sonolor 0208 0163 0400  
                   0505 0010 0361  
 1910804 Sontec 0037 0370 0294  
 1910805 Sony 0505 0010 0011  
                   0036 0102 0074  
 1910806 Sound & Vision 0102 0218 0374  
 1910807 Soundesign 0178  
 1910809 Soundwave 0037 0418  
 1911143 Ssangyong 0009  
 1910813 Standard 0218 0009 0217  
                   0037 0374  
 1910817 Starlite 0009 0163 0037  
                   0264  
 1910822 Stenway 0282 0218  
 1910823 Stern 0206 0259 0163  
 1911020 Strato 0037 0264 0009  
 1910828 Sunkai 0294 0355 0321  
                   0455 0218 0235  
                   0037 0487  
 1910831 Sunstar 0371 0037 0009  
                   0579  
 1910833 Sunwood 0037 0009  
 1910835 Superla 0516 0216  
 1910838 SuperTech 0009 0037 0216  
                   0556 0218  
 1910839 Supra 0374 0009  
 1910840 Susumu 0335  
 1910841 Sutron 0009  
 1911319 Swissline 0247  
 1910842 Sydney 0216 0217  
 1911021 Sytong 0216  
 1910849 Tandberg 0367 0411 0109  
                   0196 0361  
 1910850 Tandy 0218 0072 0217  
                   0247 0093  
 1910852 Tashiko 0036 0217 0170  
                   0216 0163  
 1910853 Tatung 0072 0516 0217  
                   0037 0011  
 1910854 Teac 0037 0512 0455  
                   0264 0009 0412  
                   0178  
 1910855 TEC 0217 0009 0247  
                   0335 0259  
 1911320 Tech Line 0037 0668  
 1912107 Technica 0218  
 1910857 Technics 0250  
 1911453 Tedalex 0217  
 1911978 Teiron 0009  
 1910866 Teleavia 0109 0196  
 1910870 Telecor 0037 0163 0218  
                   0217 0259  
 1910872 Telefunken 0109 0074 0084  
                   0101 0335 0262  
                   0073 0196 0037  
                   0486 0625

1911213 Telefusion 0037  
 1910874 Telegazi 0037 0163 0259  
                   0218 0264  
 1910878 Telemeister 0037  
 1910882 Telesonic 0037  
 1910883 Telestar 0037  
 1910884 Teletech 0009 0247 0037  
                   0668  
 1910885 Teleton 0217 0206 0163  
                   0259 0036  
 1910887 Televideon 0163 0216  
 1911022 Televiso 0400  
 1910889 Temco 0294  
 1911334 Tempest 0009 0037  
 1910891 Tensai 0104 0218 0037  
                   0217 0294 0009  
                   0105 0374 0371  
                   0377 0247  
 1911023 Tenson 0009  
 1911461 Tevion 0037 0648 0668  
 1910892 Texet 0217 0374 0009  
 1910895 Thomson 0109 0335 0196  
                   0198 0037 0625  
 1910897 Thorn 0193 0073 0190  
                   0238 0074 0084  
                   0037 0104 0335  
                   0512 0374  
 1911329 TMK 0178  
 1910900 Tokai 0072 0037 0448  
                   0163 0217 0374  
                   0009  
 1910901 Tokyo 0216 0448  
 1910902 Tomashi 0282 0218  
 1910905 Toshiba 0508 0036 0070  
                   0102 0217  
 1910906 Towada 0102 0217  
 1912109 Toyoda 0009  
 1912110 Trakton 0264  
 1910908 Trans  
                   Continens 0217 0037  
 1912111 Transonic 0037 0455 0587  
                   0512  
 1912008 Transtec 0216  
 1910913 Trident 0516 0217  
 1910915 Tristar 0218 0193  
 1910916 Triumph 0177 0516 0346  
                   0556 0037  
 1910919 Uher 0037 0206 0303  
                   0374 0418 0486  
                   0370 0259  
 1910920 Ultravox 0087 0102 0374  
                   0247 0216 0163  
                   0037  
 1911024 Unic Line 0037 0473  
 1911215 United 0037

1910929	Universum	0346 0105 0195
		0473 0361 0247
		0480 0370 0200
		0418 0011 0512
		0294 0036 0070
		0163 0264 0104
		0037 0411 0290
		0074 0327 0328
		0010 0505 0217
		0109 0177 0631
		0668
1910930	Univox	0087 0037 0163
		0238
1910937	Vestel	0037 0163 0217
1910938	Vexa	0009 0037
1910939	Victor	0053
1910942	Videologique	0216 0218 0217
1910943	VideoSystem	0037
1910944	Videotechnic	0216 0217 0374
1911025	Videoton	0356 0163
1911322	Vidikron	0102
1911330	Vidtech	0036 0178
1910949	Visiola	0216
1910950	Vision	0037
1910954	Vistar	0206 0361
1910956	Vortec	0037
1910957	Voxson	0087 0037 0418
1910958	Waltham	0217 0356 0418
		0037
1910959	Watson	0037 0163 0218
		0579 0009 0668
1910960	Watt Radio	0102 0163 0216
1910961	Wega	0036 0087 0037
1911026	Wegavox	0009
1910963	Weltblick	0037
1911245	Wharfedale	0037
1910967	White	
	Westinghouse	0216 0037
1911264	Winco	0412
1911027	Windstar	0282
1910976	Xrypton	0037
1910979	Yamishi	0282 0455 0218
		0037 0217
1910980	Yokan	0037
1910981	Yoko	0217 0037 0218
		0264 0009 0370
		0216 0247
1910983	Yorx	0218
1910984	Zanussi	0206 0217

---

## Video Recorders

---

### Videorecorder

---

### Magnétoscopes

---

1921028	Adelsound	0004
1920012	Adyson	0072
1920019	Aiwa	0307 0000 0041
		0348 0352 0037

1920020	Akai	0106 0315 0041
		0020 0352 0240
1920021	Akiba	0072
1920023	Akura	0072 0041
1920024	Alba	0278 0072 0352
		0020 0000 0315
		0348
1920029	Allorgan	0240
1920032	Allstar	0081
1920037	Ambassador	0020
1920042	Amstrad	0000 0278 0072
1920045	Anitech	0072
1920047	Ansonic	0004
1920057	Aristona	0081
1920060	ASA	0037 0081
1920070	Asuka	0072 0037 0081
		0000 0038
1920080	Audiosonic	0278
1920081	Audioton	0020
1921156	AWA	0037 0278 0043
1920091	Baird	0106 0278 0104
		0041 0000
1920093	Bang & Olufsen	0499
1920097	Basic Line	0278 0020 0072
1920107	Bestar	0278 0020
1920109	Black Panther	0278
1920113	Blaupunkt	0226 0081 0162
		0195
1920114	Blue Sky	0037 0348 0072
		0352
1920118	Bondstec	0020 0072
1920123	Brandt	0041 0320 0321
		0493
1920126	Brinkmann	0348
1920139	Bush	0072 0278 0315
		0352 0000 0348
1920150	Carena	0081
1920151	Carrefour	0045
1920154	Casio	0000
1920155	Cathay	0278
1920156	Catron	0020
1920162	CGE	0041 0000
1920167	Cimline	0072
1920172	Clatronic	0020 0072
1920180	Combitech	0352
1920187	Condor	0020 0278
1920197	Crown	0278 0072 0020
1920205	Daewoo	0278 0020 0045
		0352
1920207	Dansai	0072 0278
1920210	Daytron	0278
1920216	de Graaf	0042 0081 0104
		0048
1920214	Decca	0000 0041 0081
		0008 0067 0348
1921459	Deitron	0278
1920999	Denko	0072
1921000	Diamant	0037
1920240	Dual	0041 0081 0278
		0000
1920243	Dumont	0000 0081 0104
1920252	Elbe	0278 0038
1920253	Elcatech	0072

1920259 Elin 0240  
 1921031 Elsay 0072  
 1920263 Elta 0072 0278  
 1920265 Emerson 0072 0045  
 1920272 ESC 0278 0240 0020  
 1920274 Etzuko 0072  
 1920280 Europhon 0020  
 1920294 Fenner 0020  
 1920296 Ferguson 0041 0320 0321  
 0493 0000 0278  
 1920299 Fidelity 0000 0072 0240  
 1920301 Finlandia 0104 0081 0042  
 0000 0048  
 1920302 Finlux 0000 0081 0104  
 0042  
 1920304 Firstline 0072 0348 0043  
 0037 0045 0042  
 0278  
 1920305 Fisher 0104 0038 0020  
 1920319 Frontech 0020  
 1920322 Fujitsu 0000  
 1920323 Funai 0000  
 1920326 Galaxi 0000  
 1920331 GBC 0020  
 1920335 GEC 0081  
 1920337 General 0020  
 1920338 General  
 Technic 0348  
 1920339 Genexxa 0104  
 1920345 Goldhand 0072  
 1920347 GoldStar 0037 0000  
 1920349 Goodmans 0000 0072 0240  
 0278 0037 0020  
 0081 0348  
 1921248 Gradiente 0008  
 1920352 Graetz 0041 0104 0240  
 1920353 Granada 0104 0048 0081  
 0240 0037 0226  
 0042 0000  
 1920354 Grandin 0072 0037 0020  
 0000 0278  
 1920355 Grundig 0195 0081 0347  
 0226 0320 0348  
 1921108 Hanimex 0352  
 1920362 Hanseatic 0037 0278 0081  
 1920364 Hantor 0020  
 1921084 Harwood 0072  
 1920370 HCM 0072  
 1920377 Hinari 0004 0072 0352  
 0041 0278  
 1920380 Hisawa 0352  
 1920381 Hitachi 0042 0041 0000  
 0240 0081 0004  
 0104  
 1921085 Hornyphone 0081  
 1920391 Hypson 0072 0278 0352  
 1920394 Impego 0020  
 1920395 Imperial 0000 0240  
 1920398 Ingersoll 0004 0240  
 1920401 Inno Hit 0020 0240 0278  
 0072  
 1920404 Interbuy 0037 0072  
 1920405 Interfunk 0081 0104

1921113 Internal 0278  
 1921114 International 0278  
 1920408 Intervision 0000 0278 0037  
 0348  
 1920410 Irradio 0072 0037 0081  
 1920415 ITT 0106 0041 0104  
 0240  
 1920416 ITT Nokia 0048  
 1920417 ITV 0278 0037 0020  
 1920425 JVC 0041 0067 0008  
 1920427 Kaisui 0072  
 1920430 Karcher 0278  
 1920432 Kendo 0106 0315 0348  
 0072 0037  
 1920434 Kenwood 0041 0038  
 1920438 Kneissel 0352 0348 0037  
 1920443 Korpel 0072  
 1922095 Kuwa 0226  
 1920451 Kyoto 0072  
 1920461 Leyco 0072  
 1921072 LG 0037 0000 0278  
 1920463 Lifetec 0348  
 1920472 Loewe 0081 0037 0004  
 0162 0454  
 1920474 Logik 0004 0240 0072  
 0106  
 1921009 Lumatron 0278  
 1920485 Luxor 0106 0043 0072  
 0104 0048  
 1920492 Magnavox 0081  
 1920496 Manesth 0072 0045 0081  
 1920500 Marantz 0081 0038  
 1920504 Mark 0278 0020  
 1920508 Matsui 0004 0348 0037  
 0240 0352 0000  
 1920517 Mediator 0081  
 1920518 Medion 0348 0352  
 1920487 Melectronic 0000 0037 0038  
 1920520 Memorex 0104 0000 0037  
 0048  
 1920521 Memphis 0072  
 1920525 Metz 0195 0347 0081  
 0162 0454 0226  
 1921323 Micormay 0348  
 1920529 Migros 0000  
 1920531 Minerva 0195  
 1920535 Mitsubishi 0043 0067 0081  
 1920547 Multitech 0000 0072 0020  
 0104  
 1920551 Murphy 0000  
 1920553 NAD 0104  
 1920562 National 0226 0162  
 1920564 NEC 0041 0038 0067  
 0104 0037  
 1920565 Neckermann 0041 0081  
 1920567 Nesco 0072 0000 0352  
 1920576 Nikkai 0020 0072 0278  
 1920580 Nokia 0104 0106 0315  
 0041 0278 0240  
 0048 0042 0081  
 1920582 Nordmende 0041 0320 0321  
 0067 0493

1920588 Oceanic 0000 0048 0106  
 0081 0104 0041  
 1920590 Okano 0315 0348 0072  
 0278  
 1920602 Orion 0004 0352 0348  
 1920604 Orson 0000  
 1920605 Osaki 0000 0037 0072  
 1920610 Otto Versand 0081  
 1920616 Palladium 0072 0315 0037  
 0041 0004 0240  
 1921129 Palsonic 0072 0000  
 1920620 Panasonic 0162 0454 0226  
 1920628 Pathe Cinema 0004 0043  
 1920629 Pathe Marconi 0041  
 1920632 Perdio 0000  
 1920634 Philco 0038 0072  
 1920636 Phillips 0081  
 1920640 Phonola 0081  
 1920642 Pioneer 0067 0081 0042  
 1920648 Portland 0020 0278  
 1920656 Prinz 0000  
 1920660 Profitronic 0081 0240  
 1920662 Proline 0000 0320 0321  
 1921194 Proscoc 0278  
 1920664 Prosonic 0278 0000  
 1920665 Protech 0081  
 1920669 Provision 0278  
 1920672 Pye 0081  
 1920678 Quelle 0081  
 1920682 Radialva 0037 0072 0081  
 0048  
 1920684 Radiola 0081  
 1920690 Rank 0041  
 1920699 Rex 0041  
 1920700 RFT 0020 0072  
 1920701 Roadstar 0240 0072 0037  
 0278  
 1920710 Royal 0072  
 1920715 Saba 0041 0320 0321  
 0278  
 1920720 Saisho 0004 0348  
 1920722 Salora 0043 0106 0104  
 1920724 Samsung 0240  
 1920725 Samurai 0020  
 1920727 Sansui 0041 0067 0106  
 0072 0348  
 1920728 Sanwa 0004  
 1920729 Sanyo 0104 0048 0067  
 1920742 Saville 0352 0278 0240  
 1920743 SBR 0081  
 1921200 Scan Sonic 0240  
 1920745 Schaub Lorenz 0041 0104 0000  
 0106 0315  
 1920746 Schneider 0072 0000 0037  
 0081 0278 0240  
 1922103 Seaway 0278  
 1920753 SEG 0072 0240 0278  
 1920755 Sei-Sinudyne 0004 0081  
 1920756 Seleco 0041 0008 0020  
 0037  
 1921250 Semivox 0045  
 1920759 Sentra 0072 0020  
 1921910 Setron 0072

1920762 Sharp 0048 0037  
 1920766 Shintom 0072 0104  
 1920768 Shivaki 0037  
 1920769 Shorai 0004  
 1920773 Siemens 0195 0037 0104  
 0081  
 1921916 Siera 0081  
 1920780 Silva 0037  
 1920781 Silver 0278  
 1920783 Sinudyne 0004 0081  
 1920797 Solavox 0020  
 1921035 Sonneclair 0072  
 1920802 Sonoko 0278  
 1920803 Sonolor 0048  
 1920804 Sontec 0037  
 1920805 Sony 0033 0032 0106  
 1920809 Soundwave 0037  
 1921143 Ssangyong 0072  
 1920813 Standard 0278  
 1920817 Starlite 0037 0104  
 1920823 Stern 0278  
 1920828 Sunkai 0348 0278  
 1920831 Sunstar 0000  
 1920832 Suntronic 0000  
 1920833 Sunwood 0072  
 1920839 Supra 0037 0240  
 1920843 Symphonic 0000 0072  
 1920847 Taisho 0004  
 1920849 Tandberg 0278  
 1920852 Tashiko 0000 0048 0240  
 0081 0037  
 1920853 Tattung 0000 0041 0081  
 0048 0043 0348  
 0352  
 1920854 Teac 0041 0000 0278  
 0037 0081 0307  
 1920855 TEC 0020 0278 0072  
 1920859 TechniSat 0348  
 1920866 Teleavia 0041  
 1920872 Telefunken 0041 0320 0321  
 0493 0278  
 1920884 Teletex 0072 0278 0000  
 1921334 Tempest 0020  
 1920890 Tenosal 0072  
 1920891 Tensai 0000 0037 0072  
 0004  
 1921461 Tevion 0348  
 1920895 Thomson 0041 0320 0321  
 0493  
 1920897 Thorn 0041 0104 0037  
 1920900 Tokai 0072 0037 0041  
 0104  
 1922002 Tokiwa 0072  
 1920904 Topline 0348  
 1920905 Toshiba 0045 0041 0043  
 0081  
 1920906 Towada 0072  
 1922110 Trakton 0020  
 1920918 TVA 0020  
 1920919 Uher 0037 0240  
 1920920 Ultravox 0278  
 1920924 Unitech 0240

1920926	United Quick Star	0278		
1920929	Universum	0000	0081	0240
		0037	0106	0348
		0195		
1920939	Victor	0008	0067	
1920959	Watson	0081	0352	
1920963	Weltblick	0037		
1920979	Yamishi	0072	0278	
1920980	Yokan	0072		
1920981	Yoko	0037	0072	0020
		0240		

---

## Satellite Receivers

---

## Satellitenempfänger

---

## Récepteurs satellites

---

1930994	ABsat	0832		
1930013	Aegir	0520		
1930016	AGS	0668		
1930020	Akai	0515	0200	
1931153	Akena	0668		
1930024	Alba	0421	0515	0455
		0613	0713	
1930027	Aldes	0288	0520	
1930030	Allsat	0200		
1930031	Allsonic	0288	0369	
1930033	Alltech	0713		
1930034	Alpha	0668	0200	
1930036	Altai	0396		
1930039	Amitronica	0713		
1930040	Ampere	0396	0829	0132
1930042	Amstrad	0345	0847	0252
		0243	0713	0742
		0396	0132	0885
		0863		
1930044	Anglo	0713		
1930046	Ankaro	0288	0369	0713
1930049	Anttron	0421	0613	
1930050	Apollo	0421		
1930056	Arcon	0692		
1930058	Armstrong	0243	0200	
1930061	Asat	0200		
1931154	ASLF	0713		
1930064	AST	0351	0321	
1930065	Astacom	0668	0710	
1930068	Astra	0108	0243	0607
1930069	Astro	0173	0358	0520
		0613	0369	0501
		0658		
1930071	Athena	0668		
1930081	Audioton	0613		
1931155	Austar	0863	0642	0283
		0497	0879	
1931037	Avalon	0396		
1930088	Axiel	0668		
1930089	Axis	0369		
1930095	Barcom	0108		
1930103	Beko	0455		

1930106	Best	0369		
1930113	Blaupunkt	0173		
1930114	Blue Sky	0713	0885	
1930117	Boca	0243	0794	0829
		0132		
1930122	Brain Wave	0692		
1930130	Broco	0713		
1931070	BskyB	0847		
1931531	BT	0515	0668	0710
1931038	Bubu Sat	0713		
1931039	BVV	0692		
1930143	Cambridge	0515	0501	
1930995	Canal Satellite	0853		
1931458	Chess	0157	0605	
1930170	CityCom	0818	0115	0607
1931099	Clark	0613		
1930176	CNT	0520		
1930177	Colombia	0668		
1930183	CommLink	0288		
1930185	Comtec	0288		
1930187	Condor	0369	0607	
1930189	Connexions	0396	0369	
1930190	Conrad	0607	0573	0115
		0369	0501	
1930197	Crown	0243		
1930198	Cryptovision	0455		
1931092	D-box	0723	0873	
1930205	Daewoo	0713	0421	
1931040	Daumling	0794		
1931161	Delfa	0863		
1931300	Discoverer	0605		
1930227	Discovery	0668		
1931041	Diseqc	0710		
1931352	Distratel	0084	0885	
1930230	Distrisat	0200		
1930233	DNR	0692		
1930234	DNT	0200	0396	
1931042	DST	0421		
1930244	Dune	0369		
1930248	Echostar	0396	0668	0713
		0871	0853	
1930251	Einhell	0243	0421	0288
		0252	0713	0501
		0794	0132	
1930255	Eleкта	0520		
1930263	Elta	0421	0200	0369
1930264	Emanon	0421		
1930266	Emme Esse	0369	0871	
1931043	Engel	0713		
1930268	EP Sat	0455		
1930275	Eurieult	0136	0084	0885
1931044	Eurocrypt	0455	0108	
1930279	Europa	0501	0200	0863
		0607		
1931045	European	0794		
1930282	Eurosat	0243		
1930283	Eurosky	0243	0369	0607
		0132	0115	
1930285	Eurostar	0607	0880	
1930289	Exator	0421	0515	0613
1930294	Fenner	0668		
1930296	Ferguson	0455	0711	
1930299	Fidelity	0252	0501	

1930301 Finlandia 0455 0108  
 1930302 Finlux 0455 0108 0573  
 1931165 Flair Mate 0713  
 1931301 Foxtel 0879 0720 0497  
 1930315 Fracarro 0421 0668 0871  
 1930317 Freecom 0421  
 1930320 FTE 0369 0713  
 1930321 Fuba 0369 0396 0421  
                   0173 0573 0108  
 1930327 Galaxis 0288 0369 0692  
                   0863 0283 0853  
 1930328 Galaxisat 0321  
 1931449 Gardiner 0818  
 1930344 GMI 0243  
 1931168 Goldbox 0853  
 1930349 Goodmans 0455  
 1930353 Granada 0108  
 1930354 Grandin 0084 0136  
 1930355 Grundig 0173 0847 0571  
                   0750 0805 0345  
                   0879 0885  
 1930362 Hanseatic 0605  
 1930364 Hantor 0421  
 1930365 Hanuri 0520  
 1931047 Hase & Igel 0692  
 1930371 Heliocom 0607  
 1930377 Hinari 0421  
 1930379 Hirschmann 0173 0573 0501  
                   0396 0710  
 1930381 Hitachi 0455  
 1931171 HNE 0742  
 1930385 Houston 0668  
 1931172 Humax 0863 0283  
 1930387 Huth 0607 0288 0243  
                   0794 0132  
 1930391 Hypson 0136  
 1931175 Imex 0084 0136  
 1931114 International 0132  
 1930407 Intertronic 0243  
 1930408 Intervision 0628 0607  
 1931345 Invideo 0871  
 1931302 Italtel 0871  
 1930416 ITT Nokia 0108 0573 0455  
                   0873 0723  
 1930424 JOK 0690 0710  
 1930425 JVC 0515 0571  
 1931048 K-SAT 0713  
 1931176 Kamm 0880 0713  
 1930431 Kathrein 0358 0173 0200  
                   0622 0658 0713  
                   0613 0668 0818  
 1930436 Key West 0794  
 1932094 Kiton 0114  
 1930440 Kolon 0421  
 1931454 Konig 0607  
 1930446 KR 0613  
 1930447 Kreiselmeyer 0173  
 1930450 Kyostar 0421 0613  
 1931304 L&S Electronic 0369  
 1930453 Lasat 0520 0369 0607  
                   0243 0115 0132  
                   0157  
 1931049 Lemon 0692

1930454 Lenco 0421 0713 0692  
                   0115 0369 0607  
 1930457 Lenson 0501  
 1930460 Lexus 0200  
 1930461 Leyco 0515  
 1930462 Lifesat 0605 0369  
 1930472 Loewe 0243  
 1930475 Lorenzen 0692 0794 0607  
                   0742 0132  
 1930479 Lupus 0369  
 1930485 Luxor 0108 0345 0573  
                   0873 0501  
                   0605  
 1930486 M&B1 0605  
 1931050 Manata 0710 0668 0136  
                   0713  
 1930497 Manhattan 0455 0520 0710  
                   0668  
 1930500 Marantz 0200  
 1930506 Maspro 0750 0713 0173  
                   0571 0692  
                   0571 0710 0173  
 1930508 Matsui 0571 0710 0173  
 1930509 Max 0607  
 1930511 MB 0605  
 1931053 Mediabox 0853  
 1930515 Mediemarkt 0243  
 1930516 MediaSat 0501 0853  
 1930518 Medion 0713 0369  
 1931120 Medison 0713  
 1930519 Mega 0200  
 1930487 Melectronic 0818  
 1930524 Metronic 0421 0243 0613  
                   0288 0520 0084  
                   0136 0818 0885  
 1930525 Metz 0173  
 1931123 Micro 0607 0613  
 1931054 Micro  
                   electronic 0713  
 1930527 Micro  
                   Technology 0713  
 1931185 Microtec 0713  
 1930531 Minerva 0571  
 1930535 Mitsubishi 0455  
 1930540 Morgan's 0243 0200 0794  
                   0713 0829 0132  
                   0642 0879  
 1931305 Multichoice 0157  
 1931452 Multitec 0157  
 1930550 Muratto 0321  
 1930552 Mysat 0713  
 1930569 Neuhaus 0501 0692 0713  
                   0607  
 1930570 Neusat 0692 0713  
 1930573 NextWave 0732  
 1930577 Nikko 0243 0713 0723  
 1930580 Nokia 0108 0723 0573  
                   0873 0455 0751  
                   1023 0853  
 1930582 Nordmende 0455 0520 0421  
 1930589 Octagon 0421 0613  
 1930590 Okano 0243  
 1931069 OnDigital 0133 0241 0751  
                   0137  
 1931447 Optus 0879  
 1930599 Orbit 0351



1930600 Orbitech 0501 0421 0548  
0157  
1930601 Origo 0497  
1930606 OSAT 0345  
1930611 Oxford 0515 0668  
1930612 Pace 0455 0847 0791  
0795 0241 0720  
0497 0887  
1931441 Packsat 0710  
1930616 Palladium 0243 0571 0421  
0501  
1930617 Palsat 0501  
1931130 Panasat 0879 0615  
1930620 Panasonic 0455 0847  
1930623 Panda 0455 0108 0607  
0173  
1930630 Patriot 0515 0668  
1930636 Phillips 0200 0455 0750  
0710 0613 0805  
0668 0853 0571  
0173 0133 0818  
1930641 Phonotrend 0288 0863  
1930642 Pioneer 0853  
1931133 Planet 0871  
1930646 Polytron 0396  
1930652 Predki 0421  
1930653 Preisner 0243 0132 0396  
0794  
1931056 Premiere 0853 0873  
1930661 Profile 0668  
1930663 Prosat 0288 0628  
1930664 Prosonic 0742  
1930669 Provision 0520  
1930672 Pye 0571  
1930676 Quadral 0288 0369 0628  
0668 0710  
1930678 Quelle 0252 0607 0742  
0115  
1930684 Radiola 0200  
1930687 Radix 0396  
1930689 Rainbow 0613  
1930694 Red Star 0369  
1930700 RFT 0288 0200  
1930701 Roadstar 0713  
1930708 Rover 0628 0713  
1930715 Saba 0520 0690 0710  
0692 0885 0115  
0607  
1930716 Sabre 0455  
1930718 Sagem 0820  
1930722 Salora 0108  
1930724 Samsung 0421 0853  
1930731 SAT 0351 0321 0501  
1930740 Sat Partner 0421 0520 0613  
1931450 Sat Plus 0157  
1930732 Sat Team 0713  
1930734 Satcom 0605 0607  
1930735 Satec 0713  
1931057 Satelco 0369  
1930738 Satline 0628  
1931058 Schacke 0613  
1930746 Schneider 0805 0710

1930747 Schwaiger 0605 0732 0157  
0607 0885 0692  
0115  
1931442 SCS  
1930751 Sedea  
Electronique 0421  
1930752 Seemann 0396 0243 0515  
1930753 SEG 0421 0369 0605  
0742 0114  
1930756 Seleco 0871  
1931141 Servi Sat 0136  
1930773 Siemens 0173  
1930785 Skantin 0713  
1931205 Skinsat 0501  
1930787 SKR 0713  
1931298 Sky 0856 0887 0847  
1930789 Skymaster 0288 0605 0628  
0713 0880 0157  
1930790 Skymax 0200  
1931206 SkySat 0157 0605  
1930794 SL 0692 0132 0742  
0243  
1931207 Smart 0132  
1930805 Sony 0847 0455 0853  
1931443 Starland 0713  
1930824 Strong 0421 0613 0369  
0520 0879 0853  
1930826 STVI 0136  
1930827 Sumida 0243  
1930829 Sunny Sound 0369  
1930830 Sunsat 0713  
1930831 Sunstar 0243 0369 0794  
0132  
1930851 Tantec 0455  
1930853 Tantung 0455  
1930859 TechniSat 0501 0548 0200  
1930860 Technowelt 0607  
1930862 Teco 0243  
1930863 Telasat 0605 0115 0607  
1930868 Teleciel 0613  
1930869 Telecom 0713  
1930872 Telefunken 0421 0710  
1930875 Teleka 0243 0613 0396  
0750 0692 0501  
0607  
1930876 Telemaster 0520  
1930880 Telesat 0605 0607  
1930883 Telesat 0501  
1930884 Teletech 0880 0114  
1930886 Televes 0455 0501  
1930895 Thomson 0455 0713 0853  
0115 0607 0820  
0668 0710 1046  
1930897 Thorn 0455  
1930898 Tioko 0243  
1930900 Tokai 0200  
1930903 Tonna 0455 0668 0501  
0713  
1930905 Toshiba 0455 0137  
1930992 TPS 0820  
1930911 Triad 0351 0321 0372  
1930912 Triasat 0501  
1931061 Triax 0501 0115 0200  
0396 0713 0853

1932019	UEC	0879	
1930923	Unisat	0243	0200
1930929	Universum	0173	0571 0607
		0115	0742
1930932	Variosat	0173	
1930936	Ventana	0200	
1930937	Vestel	0742	
1932036	Videocrypt	0711	1014
1930952	Visiosat	0351	0690 0713
1930956	Vortec	0421	
1930931	VTech	0351	0321 0690
		0818	
1930962	Wela	0713	0794 0132
1931091	Wetekom	0829	0157 0605
		0501	
1930966	Wewa	0455	
1931217	Wibo	0243	
1931062	Wintergarten	0288	
1930969	Wisi	0638	0173 0321
		0372	0690 0396
		0455	0351 0501
		0607	
1930971	Woorisat	0520	
1932113	Worldsat	0668	0710
1931151	XCOM	0832	
1930976	Xrypton	0369	
1930993	XSat	0832	0668 0713
1932070	Zaunkonig	0692	
1930986	Zehnder	0321	0520 0369
		0818	0742 0114
		0115	
1930987	Zenith	0856	
1931064	Zeta		
	Technology	0200	
1930989	Zodiac	0613	
1930990	Zwergnase	0794	0243

---

## Cable Converters

---

## Kabelsignalumwandler

---

## Décodeurs de câble

---

1930025	Alcatel	0896	0897
1931155	Austar	0276	
1931531	BT	0105	
1930141	Cabletime	0448	0665
1931564	Comcrypt	0443	
1931641	Filmnet	0443	
1930996	France		
	Telecom	0451	0817
1931076	General		
	Instruments	0276	
1930421	Jerrold	0003	0276
1931341	Kabelvision	0003	
1930489	Macab	0817	
1931782	MNet	0443	
1932098	Mr Zapp	0817	
1932072	NTL Cabletell	0276	
1931447	Optus	0276	
1930612	Pace	1068	

1930636	Philips	0451	0817
1931065	PVP		
	Stereo Visual	0003	
1930718	Sagem	0817	
1930748	Scientific		
	Atlanta	0277	
1930864	Tele+1	0443	
1930879	Telepiu	0443	
1930917	Tudi	0286	
1930925	United Cable	0003	
1930945	Videoway	0250	
1930951	Visiopass	0451	0817
1932055	Westminster	0105	

---

## Video Accessories

---

1961092	D-box	0804	
1960416	ITT Nokia	0804	
1960580	Nokia	0804	
1961056	Premiere	0804	

---

## CD / Mini Disc

---

1940019	Aiwa	0124	
1940024	Alba	0615	
1941093	Alto	0625	
1940054	Arcam	0157	
1941228	Audio Research	0157	
1941097	Audiolab	0157	
1941229	Audiomeca	0157	
1940081	Audioton	0157	
1942091	BAT	0157	
1940139	Bush	0615	
1940142	California		
	Audio Lab	0029	
1941157	Cambridge		
	Audio	0625	0157
1941232	Craig	0615	
1940204	Cyrus	0157	
1940217	Denon	0003	
1941234	DKK	0000	
1940249	Eclipse	0625	
1940299	Fidelity	0625	
1941237	Gemini	0625	
1940339	Genexxa	0000	0037 0032
1941438	Goldmund	0157	
1940349	Goodmans	0625	0615
1940355	Grundig	0157	
1940366	Harman/		
	Kardon	0173	0157
1940370	HCM	0625	
1940378	Hiro	0625	
1940425	JVC	0072	
1940434	Kenwood	0037	0028
1941115	Krell	0157	
1942096	Lansay	0625	
1940466	Linn	0157	
1940500	Marantz	0157	
1940508	Matsui	0157	

1941242	MCS	0029
1940520	Memorex	0032
1940523	Meridian	0157
1940528	Micromega	0157
1940534	Mission	0157
1940543	MTC	0625
1940553	NAD	0000
1940557	Naim	0157
1940585	NSM	0157
1940620	Panasonic	0029 0303
1940636	Philips	0157 0626
1940642	Pioneer	0032
1940667	Proton	0157
1940674	QED	0157
1940675	Quad	0157
1940686	Radiotone	0615 0625
1940698	Revox	0157
1940707	Rotel	0157
1940717	SAE	0157
1940727	Sansui	0157 0625
1940746	Schneider	0615
1940762	Sharp	0037 0861
1940773	Siemens	0157
1940805	Sony	0000 0490
1940838	SuperTech	0625
1941211	Synergy	0625
1940850	Tandy	0032
1940854	Teac	0625
1940857	Technics	0029 0303
1940896	Thorens	0157
1941227	Thule	0157
1940929	Universum	0157
1940939	Victor	0072
1940959	Watson	0615
1940977	Yamaha	0036
1940987	Zenith	0615

---

## Phono

---

1970355	Grundig	0188
1970500	Marantz	0188
1970636	Philips	0188
1970929	Universum	0188

---

## Home Automation

---



---

## Heimgebrauch

---



---

## Domotique

---

1961958	Superswitch	0451
1960593	X-10 home automation	0167

---

## Amplifiers

---



---

## Audio-Verstärker

---



---

## Amplificateur

---

1950019	Aiwa	0406 0010 0159
		0404
1952091	BAT	0269
1950139	Bush	0269 0421
1950217	Denon	0160
1951438	Goldmund	0269
1950349	Goodmans	0421
1950355	Grundig	0269 0847
1960425	JVC	0073
1950466	Linn	0269
1950500	Marantz	0321 0269
1950504	Mark	0269
1950523	Meridian	0269
1950528	Micromega	0269
1950557	Naim	0269
1950620	Panasonic	0308
1950636	Philips	0269
1950642	Pioneer	0013 0269
1950675	Quad	0269
1950701	Roadstar	0847
1950727	Sansui	0321
1960805	Sony	0159 0010
1950854	Teac	0421
1950857	Technics	0308
1950872	Telefunken	0847
1950896	Thorens	0269
1950929	Universum	0269
1950977	Yamaha	0143 0354

---

## Amp/Tuners

---



---

## Verstärker/Tuner

---



---

## Ampl./Tuner Audio

---

1950019	Aiwa	0121 0405 0158
1950020	Akai	0115
1950054	Arcam	0189
1950123	Brandt	0824
1951157	Cambridge Audio	0189
1950153	Carver	0360
1950217	Denon	0004
1950305	Fisher	0360
1951438	Goldmund	0189
1950355	Grundig	1189 0189 0219
1950366	Harman/Kardon	0110 0189
1950399	Inkel	0027 0491
1951078	JBL	0110
1950425	JVC	0074 0464
1950434	Kenwood	0027 0313 0314
1950466	Linn	0189
1950500	Marantz	1189 0189 0219
1950528	Micromega	0189
1950553	NAD	0320
1950594	Onkyo	0135

1950620	Panasonic	0309	0518	0763
1950636	Philips	1189	0189	
1950642	Pioneer	0080	0289	
1950698	Revox	0189		
1950715	Saba	0824		
1950727	Sansui	0189		
1950729	Sanyo	0360	0219	
1950746	Schneider	0110		
1950762	Sharp	0262		
1950764	Sherwood	0491		
1950805	Sony	0158	1042	
1950854	Teac	0110		
1950857	Technics	0309	0518	0763
1950872	Telefunken	0824		
1950895	Thomson	0824		
1950896	Thorens	0189		
1950929	Universum	0189		
1950939	Victor	0074		
1950977	Yamaha	0176		

---

## Cassette Players

---

### Audio Cassetten Deck

---

### Lecteurs Cassette

---

1980355	Grundig	0029		
1980366	Harman/ Kardon	0029		
1980492	Magnavox	0029		
1980500	Marantz	0029		
1980620	Panasonic	0229		
1980636	Philips	0029	0229	
1980698	Revox	0029		
1980727	Sansui	0029		
1980805	Sony	0170	0243	
1980857	Technics	0229		
1980896	Thorens	0029		
1980929	Universum	0029		

---

## Laser Disc

---

1980153	Carver	0194		
1980217	Denon	0059		
1980355	Grundig	0059		
1980366	Harman/ Kardon	0194		
1980492	Magnavox	0194		
1980500	Marantz	0194		
1980535	Mitsubishi	0059		
1980553	NAD	0059		
1980636	Philips	0194		
1980642	Pioneer	0059		
1980872	Telefunken	0059		
1980893	Theta Digital	0194		

---

## DAT

---

1980355	Grundig	0158		
1980366	Harman/ Kardon	0158		
1980500	Marantz	0158		
1980636	Philips	0158		
1980857	Technics	0158		

---

## DVD

---

1982085	3DLAB	0539		
1980217	Denon	0490		
1982092	Denzel	0665		
1980222	Diamond	0651		
1980347	GoldStar	0591		
1980355	Grundig	0539		
1980381	Hitachi	0665		
1980434	Kenwood	0490		
1981072	LG	0591		
1980492	Magnavox	0503		
1980500	Marantz	0539		
1980508	Matsui	0651		
1980528	Micromega	0539		
1980594	Onkyo	0503		
1980598	Optimus	0525		
1980603	Oritron	0651		
1980620	Panasonic	0490		
1980636	Philips	0539	0503	
1980642	Pioneer	0525	0571	
1980662	Proline	0652		
1981865	Raito	0665		
1980724	Samsung	0573		
1980753	SEG	0665		
1980805	Sony	0533		
1980857	Technics	0490		
1980900	Tokai	0665		
1980905	Toshiba	0503		
1980929	Universum	0591		
1980977	Yamaha	0490		
1982067	Yamakawa	0665		
1980987	Zenith	0503	0591	



## Free Manuals Download Website

<http://myh66.com>

<http://usermanuals.us>

<http://www.somanuals.com>

<http://www.4manuals.cc>

<http://www.manual-lib.com>

<http://www.404manual.com>

<http://www.luxmanual.com>

<http://aubethermostatmanual.com>

Golf course search by state

<http://golfingnear.com>

Email search by domain

<http://emailbydomain.com>

Auto manuals search

<http://auto.somanuals.com>

TV manuals search

<http://tv.somanuals.com>