



ONKYO®

Speaker System

SKF-3600

Instruction Manual

Contents

Supplied accessories	2
Using the included speaker bases	2
Placement	2
Connections	3
Precaution on use	3
Speaker care	4
Use with a TV set or computer	4
Specifications	4

Thank you for your purchase of the Onkyo speaker system.

Please read this manual thoroughly before using it.

Following the instructions in this manual will enable you to obtain optimum performance and listening enjoyment from your new speaker system.

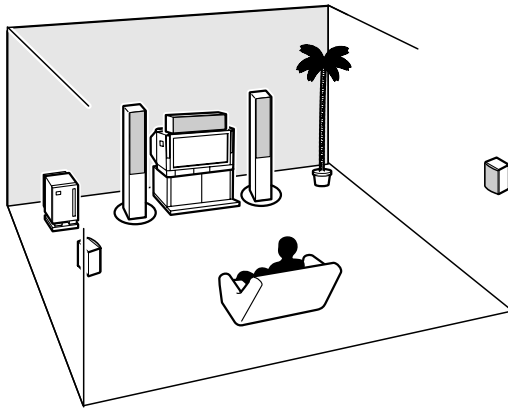
Please retain this manual for future reference.

En

Supplied accessories

SKF-3600 (front speaker) × 2
Speaker cord × 2 (red, white: 3.5m)
Speaker base × 2
Screws × 6

Placement



Front left and right speakers

Output overall sound. They play the most important role in a home theater system, by creating basic sound images and fields.

Place the front speakers in front of the listener so that they point to the listener's ears in the listening position for music and movies. Ideal speaker placement is so that they are located symmetrically.

The speaker cabinet is made of wood and sensitive to extreme temperatures and humidity. Avoid placing the speaker system in locations subjected to direct sunlight or in humid places such as near an air conditioner, bathroom, or kitchen.

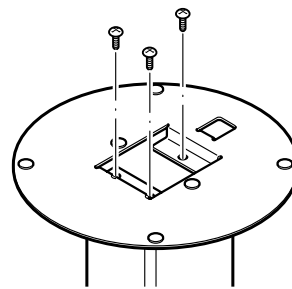
Using the included speaker bases

Before making speaker connection, attach the supplied speaker bases to the SKF-3600.

1. Turn the speaker upside down.
2. Match the screw holes on the speaker base to those on the speaker, and fix the base to the speaker using screws.

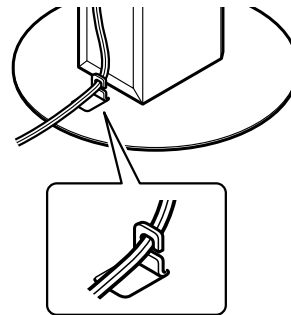
SAFETY PRECAUTIONS:

- When attaching the speaker bases, work with them on a flat, level, and solid floor.
- After attached the speaker bases, verify that the speakers stand upright and stably.



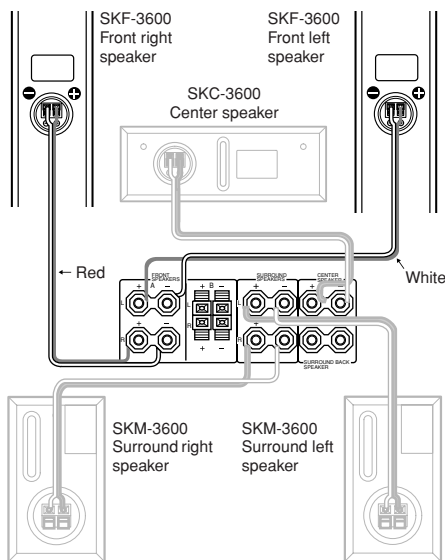
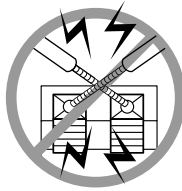
Using the speaker cable hook

The supplied speaker base has a speaker cable hook. It is recommended that you hook the cables on the hook to avoid cable congestion.



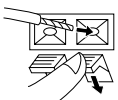
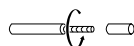
Connections

- Be sure to turn off your amplifier before connecting the speaker system. Connecting it while the amplifier is on may result in damage to the amplifier or the speaker system.
- The nominal impedance of this speaker system is 8Ω. Use only amplifiers capable of handling this impedance.
- Use the supplied speaker cables to connect between the speaker's input terminals and the amplifier's speaker terminals as illustrated below.
- Be sure to connect the Right and Left speakers with the amplifier's corresponding speaker terminals. Also, be sure that you are connecting the speaker's positive (+) and negative (-) input terminals with the amplifier's corresponding positive and negative speaker terminals. Otherwise, undesirable sound field or impaired bass-range reproduction will result.
- Before turning on the amplifier's power switch, pull lightly on the speaker cables to ensure that they are connected securely.
- To prevent damage to circuitry, never short-circuit the positive (+) and negative (-) speaker wire.



Both SKC-3600 and SKM-3600 come with SKS-3600.

1. Strip the insulation of speaker cables, and twist the core wires tightly.
2. While pressing the lever, insert the wire into the hole, and then release the lever.
3. Make sure that the terminals are gripping the core wires, not the insulation.



Precaution on use

- This speaker system can handle the specified input power when it is used for ordinary music reproduction. If the following abnormal signals are fed to the speaker, however, an overcurrent may flow in the internal circuits, causing burning or breakage of the wires even if the input power is below the specified rating.
 1. Noise produced when FM station is not tuned in
 2. Sound produced when fast-forwarding cassette tape deck
 3. High-frequency sound generated by an oscillator, an electronic musical instruments, etc.
 4. Oscillating amplifier signals
 5. Special test signals produced by audio checking CD, etc.
 6. Sound produced when connecting or disconnecting audio connection cables (Always turn off the amplifier's power before connecting or disconnecting cables.)
 7. Howling when a microphone is used
- Do not place magnetic objects such as screwdrivers and iron parts near the speaker system since they use speakers with strong magnets. Otherwise, the objects may be attracted, causing injury or damaging the diaphragm.

Speaker care

Your Onkyo speakers are finished with a very high quality polymer laminate covering that serves to protect the wood speaker cabinet.

The covering may be cleaned with a soft cloth moistened with water and a mild soap. Avoid the use of furniture polishes or harsh cleansers.

Use a soft brush or hand vacuum cleaner to remove dust and lint from the grille material.

Use with a TV set or computer

In general, Braun tubes used for color television sets and computers are extremely sensitive and can be affected even by the magnetism of the earth. If a speaker system is used near them, therefore, discoloration or distortion of pictures will occur. To allow use with a color television set or computer, this speaker system is provided with magnetic shielding. Even so, discoloration may still result, depending on the installation environment. If discoloration occurs, turn off the power of the television set or computer, wait for 15 to 30 minutes and then turn it on again. This activates the self-demagnetizing function of the television set or computer, improving the display condition.

Note:

If discoloration persists even after performing this remedy, move the speaker apart from the television set or computer. Discoloration may also be caused when a magnet or other magnetizing object exists near the television or computer because of the combined effect.

Specifications

SKF-3600

Type:	2-way bass reflex
Impedance:	8 Ω
Maximum input power:	100 W
Output sound pressure level:	84 dB
Frequency response:	55 Hz - 35 kHz
Crossover frequency:	6000 Hz
Cabinet capacity:	7.9 L
Speaker (woofer):	8 cm cone \times 2
Speaker (tweeter):	2.5 cm balanced dome
Dimensions:	
Speaker:	104 (W) \times 913 (H) \times 138 (D) mm
Speaker with base:	300 (W) \times 929 (H) \times 300 (D) mm (Overall dimensions)
Weight:	4.5 kg, 6.1 kg (with base)
Others:	Magnetic shielding

Specifications and appearance are subject to change for improvement without prior notice.

In catalogs and on packaging, the letter added to the end of the product name indicates the color of the SKF-3600. Specifications and operation are the same regardless of color.

ONKYO CORPORATION

Sales & Product Planning Div. : 2-1, Nisshin-cho, Neyagawa-shi, OSAKA 572-8540, JAPAN
Tel: 072-831-8023 Fax: 072-831-8124

ONKYO U.S.A. CORPORATION

18 Park Way, Upper Saddle River, N.J. 07458, U.S.A.
Tel: 201-785-2600 Fax: 201-785-2650 <http://www.onkyousa.com>

ONKYO EUROPE ELECTRONICS GmbH

Liegnitzerstrasse 6, 82194 Groebenzell, GERMANY
Tel: +49-8142-4401-0 Fax: +49-8142-4401-555 <http://www.onkyo.net>

ONKYO CHINA LIMITED

Units 2102-2107, Metroplaza Tower I, 223 Hing Fong Road, Kwai Chung, N.T., HONG KONG Tel: 852-2429-3118 Fax: 852-2428-9039



SN 29343811

(C) Copyright 2004 ONKYO CORPORATION Japan. All rights reserved.

D0404-1

Free Manuals Download Website

<http://myh66.com>

<http://usermanuals.us>

<http://www.somanuals.com>

<http://www.4manuals.cc>

<http://www.manual-lib.com>

<http://www.404manual.com>

<http://www.luxmanual.com>

<http://aubethermostatmanual.com>

Golf course search by state

<http://golfingnear.com>

Email search by domain

<http://emailbydomain.com>

Auto manuals search

<http://auto.somanuals.com>

TV manuals search

<http://tv.somanuals.com>