

User's
Guide

ORECK®

Grab-It & Steam-It™

Powerful, Lightweight & Durable
Power Broom & Steam Mop



Important!
Read this manual carefully, and keep for
future reference.

Enjoy



Thank you for purchasing the Oreck Grab-It & Steam-It™ Power Broom & Steam Mop. The Oreck Grab-It & Steam-It™ features a 2-year warranty. Simply install the handle and you are ready to enjoy your new Oreck Grab-It & Steam-It™ Power Broom & Steam Mop.

Welcome to our **Call. Click.** customer service program. To speak with an Oreck representative call or click using the information below.

Call



USA: **1•800•989•3535**
Canada: **1•888•676•7325**

Click



On the web, point and click at: **www.oreck.com**
or visit www.oreck.com and click locate a store on the top right.

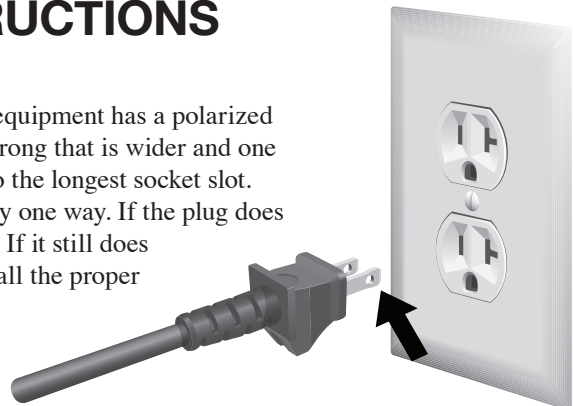
Contents

Safety	3
General Warnings	3
Operation	4
Parts List	4
Assembling the Oreck Grab-It & Steam-It™ Handle	5
Operating the Oreck Grab-It & Steam-It™	5
Operating the Power Broom	6
Operating the Steam Mop	7,8
Deep Sanitizing Instructions	9
General Use & Maintenance	9
Suggested Steam Settings	8
Maintenance	9
Replacing the Hard Water Filter	9
Brushroll Maintenance	9
Troubleshooting	10
Parts	10
Accessories & Replacement Parts	10
Warranty	11

SAVE THESE INSTRUCTIONS

Household Use Only

To reduce the risk of electric shock, this equipment has a polarized plug. A polarized plug has one rounded prong that is wider and one straight prong. The rounded end goes into the longest socket slot. This plug will fit in a polarized outlet only one way. If the plug does not fit fully in the outlet, reverse the plug. If it still does not fit, contact qualified personnel to install the proper outlet. Do not alter the plug in any way.



Safety

General Warnings



IMPORTANT SAFETY INSTRUCTIONS!

When using an electrical appliance, basic precautions should always be followed, including the following:

READ ALL INSTRUCTIONS BEFORE USING THIS APPLIANCE

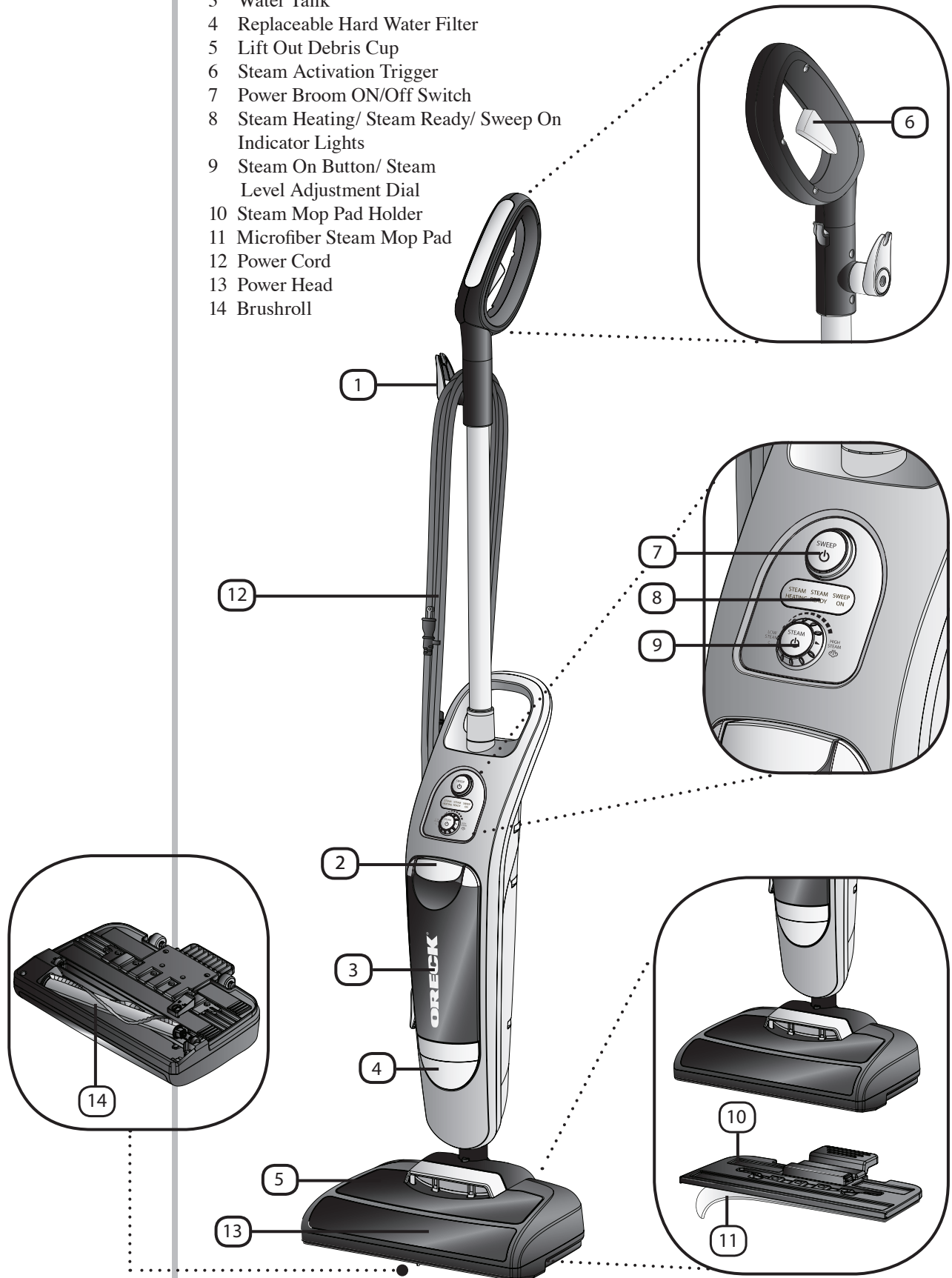
⚠️ WARNING!: To reduce the risk of fire, electric shock, or injury:

- Do not leave appliance unattended when plugged in. Unplug from outlet when not in use and before servicing.
- Do not use outdoors or on wet surfaces.
- Do not operate the unit while in the upright and locked position.
- Do not let the unit run while in any one stationary position for any period of time. Keep the unit moving while in operation.
- Do not allow to be used as a toy. Close attention is necessary when used near children.
- Use only as described in this manual. Use only manufacturer's recommended attachments.
- Do not use with damaged cord or plug. If appliance is not working as it should, has been dropped, damaged, left outdoors, or dropped into water, return it to a service center or call customer service at: **US: 1-800-989-3535 Canada: 1-888-676-7325**
- Do not pull or carry by cord, use cord as a handle, close door on cord, or pull cord around sharp edges or corners.
- Keep cord away from heated surfaces.
- Do not run appliance over cord.
- Do not unplug by pulling on cord. To unplug, grasp the plug, not the cord.
- Do not handle plug or appliance with wet hands.
- Do not use without the tank cap in place.
- Do not operate the steam function without water in the tank.
- Empty the water tank when the steam cleaner is not in use.
- Do not put any object into openings. Do not use with any opening blocked; keep free of dust, lint, hair and anything that may reduce performance.
- Keep hair, loose clothing, fingers and all parts of body away from openings and moving parts.
- Do not use to pick up anything that is burning or smoking, such as cigarettes, matches, or hot ashes.
- Turn off all controls before unplugging.
- Use extra care when cleaning on stairs.
- Do not use to pick up flammable or combustible liquids, such as gasoline or lighter fluid, or use in areas where they may be present.
- Do not use appliance in an enclosed space where flammable, explosive or toxic vapors are given off by oil base paint, paint thinner, some mothproofing substances, or in an area where flammable dust is present.
- Do not pick up toxic material such as chlorine bleach, drain cleaner, gasoline, etc. with this appliance.
- Never put additives (such as perfume, stain remover or products containing alcohol) in the water as they may damage the steam cleaner or make it dangerous to you.
- Product contains chemicals known to the State of California to cause cancer and birth defects.
- Ensure that the water tank's closure cap has been screwed down fully before use.
- Do not touch any hot areas on the appliance. It is normal for the appliance to heat up during operation.
- Do not use the appliance to treat any item of clothing while being worn on the body.
- The force and heat of the steam may have an adverse effect on some materials. Always test the steamer on a small concealed area to determine if it is suitable for treatment with the steam cleaner.
- Never aim the appliance at people, animals or plants (risk of scalding!).
- Do not aim the appliance at electrical systems or wires.
- Not for use on fine silks, velour, very thin plastics, unsealed hardwood, laminates, engineered hard floor surfaces, ceilings, drywall and exterior paint of automobiles, electronics or items using electricity.

Operation

Parts List

- 1 Cord dump
- 2 Water Tank Release Lever
- 3 Water Tank
- 4 Replaceable Hard Water Filter
- 5 Lift Out Debris Cup
- 6 Steam Activation Trigger
- 7 Power Broom ON/Off Switch
- 8 Steam Heating/ Steam Ready/ Sweep On Indicator Lights
- 9 Steam On Button/ Steam Level Adjustment Dial
- 10 Steam Mop Pad Holder
- 11 Microfiber Steam Mop Pad
- 12 Power Cord
- 13 Power Head
- 14 Brushroll



Operation *continued*

Assembling the Handle

- 1 Align the connector tab at the bottom of the Grab-It & Steam-It™ handle with the receiving port on top of the unit. Insert until a “snap” is heard.
- 2 Snap cord assembly into the cord clip located on the back of the Grab-It & Steam-It™ handle. Leave excess cord at the power head to allow movement.

Operating the Oreck Grab-It & Steam-It™

- 3 **Up-Position Lock** - Place foot on power head and lean handle back gently to release lock for use. Return handle to the full upright position to engage lock.
- 4 **Cord Dump** - To release cord, twist cord dump 1/2 turn. Slide cord off handle.
- 5 **Carry Handle** - Carry Handle is located on the back of the appliance for easy lifting, carrying, and steaming stairs.
- 6 **Easy Power Cord Storage** - Turn Cord Dump to the up position, wrap power cord around Cord Dump and lower cord bracket located below the Carry Handle.
- 7 **Microfiber Steam Mop Pad Holder**- To attach or release the microfiber steam mop pad holder, place foot on release pedal and gently push down, then:
 - a. To attach the Grab-It & Steam-It’s microfiber steam mop pad holder, lower the power head onto the microfiber steam mop pad holder.
 - b. To remove the Grab-It & Steam-It’s microfiber steam mop pad holder, lift the Grab-It & Steam-It™ appliance away from the microfiber steam mop pad holder.



Operation

continued

Power Broom Operation:

- 1 Press the "SWEEP ON/OFF" button to activate the brush roll.
NOTE: The power broom can operate on hard floors with or without the steam mop pad holder attached.
NOTE: Remove steam mop pad holder when using on low pile carpeting.
- 2 To empty the debris cup grasp the cup handle and lift out.
- 3 Press the release button on the rear of the cup to open and empty.
- 4 Replace the debris cup.
NOTE: Do not operate the power broom without the debris cup in place.
NOTE: Do not lift the power broom off of the floor while operating.

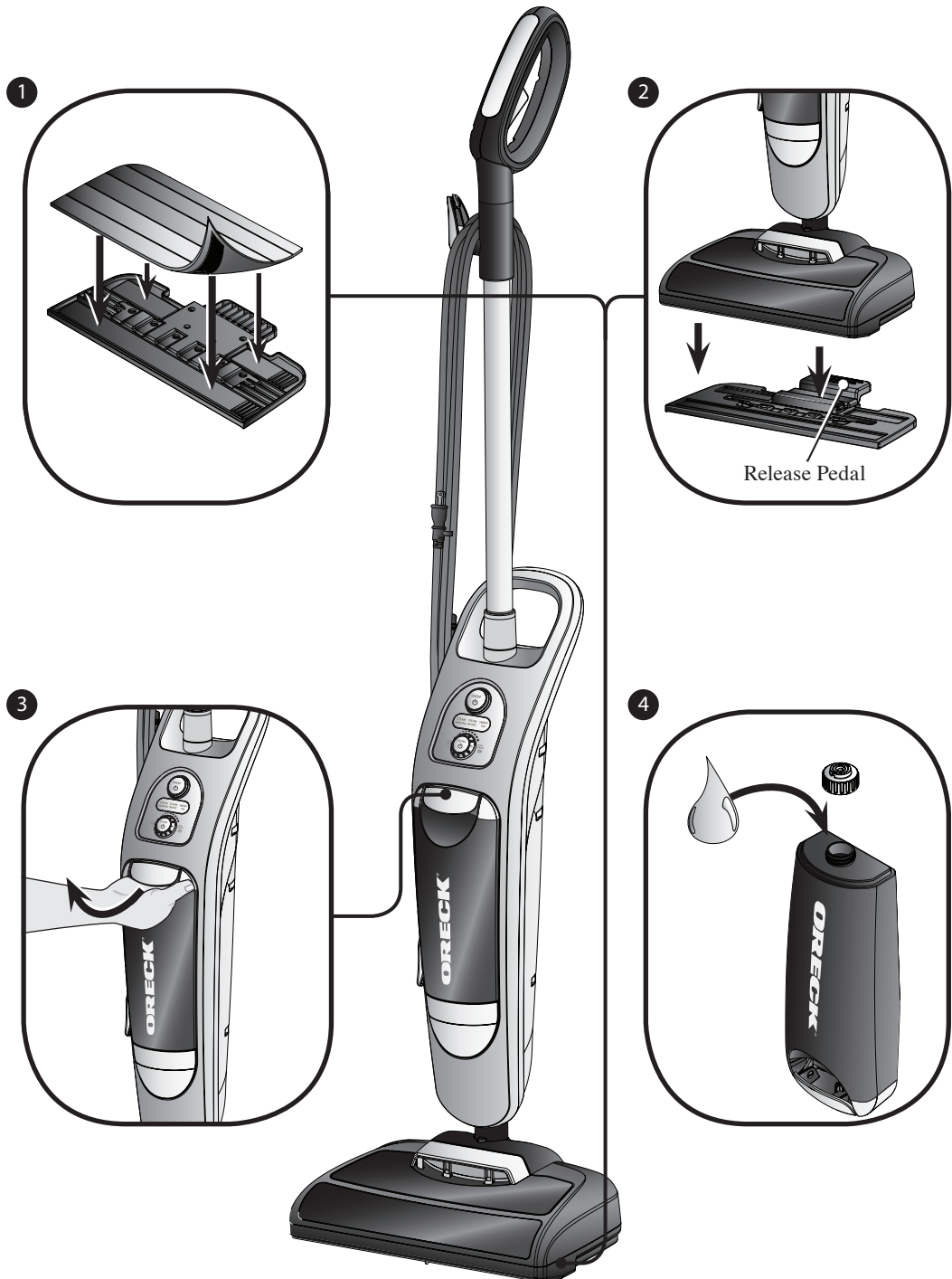


Operation

continued

Steam Mop Operation:

- 1 Align and attach Velcro® on the microfiber steam mop pad to the Velcro® on the microfiber steam mop pad holder.
- 2 To attach the Grab-It & Steam-It's microfiber steam mop pad holder, place foot on release pedal and gently push down, lower the power head onto the microfiber steam mop pad holder and LIGHTLY press down to snap into place.
NOTE: Never operate the steam mop without the microfiber steam mop pad in place.
- 3 Grasp the water tank release lever and pull forward to remove the water tank.
- 4 Remove cap from the water tank bottom and fill with water. Replace the cap and reinstall the water tank.
NOTE: Do not attempt to use steam mop without water in tank.



Operation

continued

Steam Mop Operation: continued

- 5 Press the "STEAM" button. The "STEAM HEATING" light will come on.
- 6 Rotate the steam selection button to choose the optimal steam level, right for higher, left for lower. (Refer to page 9 for suggested settings)
- 7 When the "STEAM READY" light comes on, press and hold the handle trigger to begin steam cleaning.
- 8 When the Sweep and Steam appliance stops emitting steam turn the power OFF and refill the water tank.

NOTE: When the cloth becomes very wet or dirty replace with a clean, dry cloth.



Operation *continued*

General Use & Maintenance

For Deep Sanitizing Clean

- 1 Allow unit to heat for one minute.
- 2 Set the steam selection button to HIGH STEAM.
- 3 Use short scrubbing motions on hard floor area for at least 15 seconds.

Cleaning Surfaces / Suggested Steam Settings

- 1 Grout on Hard Surfaces → Medium to High
- 2 Tiled Surfaces → Low to Medium
- 3 Sealed Hardwood → Low

Maintenance

- 1 When you have finished steam cleaning, ensure both of the Grab-It & Steam-It's power switches are turned off and that the plug is removed from the wall.
- 2 Empty the remaining water from the water tank.
- 3 Microfiber steam mop pads can be machine washed at 140°F maximum. For heavily soiled pads soak in warm water with detergent or a mild stain remover. Allow cloths to dry completely before storing. **NOTE: DO NOT USE FABRIC SOFTENER**

Replacing the Hard Water Filter

The hard water filter will help filter minerals that reduce the effectiveness of the steam cleaner. Depending on hard water conditions and/or use frequency, the filter should be replaced every 6 months.

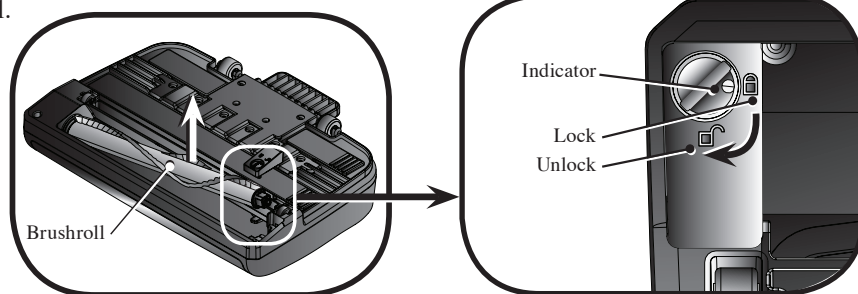


NOTICE
The condition of the hard water filter affects the performance of the steam cleaner. The interval between filter replacement depends on the hard water conditions and the level of usage.

⚠ WARNING: Unplug cord from electrical outlet before servicing.

Brushroll Maintenance

At least once a month, check for and remove excessive lint, string or hair from the revolving brushroll.



IMPORTANT: Rotate screw 1/4 turn until the indicator is aligned with the “unlock” symbol.

A little preventative maintenance will keep your Sweep and Steam looking new and will ensure continued cleaning effectiveness.

Replacing the Brushroll

The brushroll is designed for long life. Should it ever become worn or frayed, it can be replaced by an Oreck Authorized Service Center.

Trouble-shooting

Service problems that appear to be major can often be solved easily. You can be your own troubleshooter by reviewing this guide.

All other servicing should be done by an Oreck authorized service center.

Problem	Check	What to do
Unit has no power.	<ul style="list-style-type: none"> Appliance is not properly plugged into an electrical outlet or is not switched on. The electrical socket is faulty. 	<ul style="list-style-type: none"> Insert plug into an electrical outlet and switch the steam cleaner on Check the socket by unplugging the steam cleaner and plugging it into a different electrical socket.
Very low or no steam is emitted when the steam cleaner is on.	<ul style="list-style-type: none"> The tank is empty. Despite the light, the steam switch is not activated. 	<ul style="list-style-type: none"> Fill the water tank with water. Press down the steam switch fully.
Brushroll is not turning.	<ul style="list-style-type: none"> Large debris has clogged the inlet. The brushroll is set up with a clutch. 	<ul style="list-style-type: none"> Clean debris from inlet If the brushroll stops/clogged, the clutch will allow the brushroll motor to keep turning while the brushroll is stopped. A clicking noise can be heard
Steamer still does not operate properly.	<ul style="list-style-type: none"> Check all the above points. 	<ul style="list-style-type: none"> Contact Oreck Authorized Service Center.

Parts

All accessories and replacement parts are sold separately. To order, call our customer service hotline or visit our website. Please have your model number from the data label on the bottom of the unit.

Replacement Parts

Item	Part Number
Pack of 4 Microfiber Pads	SWSTEAMKIT
Replacement Water Filter	SWSTEAMFLTR

Customer Service Hotline USA: 1-800-989-3535 Canada: 1-888-676-7325
website: www.oreck.com

Warranty



ORECK MANUFACTURING COMPANY: (Oreck Manufacturing Company gives you the following limited warranty for this product only if it was originally purchased for residential use, not resale, from Oreck or an Oreck Authorized Retail Dealer.)

Oreck will repair or replace, free of charge, to the original purchaser, any part that is found to be defective in material or workmanship within two (2) years of the date of purchase. This limited warranty applies to normal domestic use. Any commercial use of this product will void this limited warranty.

This limited warranty does not cover the replacement of expendable or consumable parts such as carbon motor brushes, belts, bulbs, hard water filters, brushrolls, and other parts subject to normal wear unless they are defective in material or workmanship.

This limited warranty does not apply to any part subjected to accident, abuse, commercial use, alteration, misuse, damage caused by an act of God, the use of voltages other than indicated on the serial number displayed on this product or service of this product by other than Oreck or a participating Factory Authorized Service Center. Oreck does not authorize any person or representative to assume or grant any other warranty obligation with the sale of this product.

Oreck does not authorize any person or representative to assume or grant any other warranty obligation with the sale of this product.

Oreck's limited warranty is valid only if you retain proof of purchase from Oreck or an Oreck Authorized Retail Dealer for this product. If you purchase this product from any other source, your purchase is "AS IS," which means Oreck grants you no warranty, and that you, not Oreck, assume the entire risk of the quality and performance of this product, including the entire cost of any necessary servicing or repairs of any defects.

Oreck's liability for damages to you for any costs whatsoever arising out of this statement of limited warranty shall be limited to the amount paid for this product at the time of original purchase, and Oreck shall not be liable for any direct, indirect, consequential or incidental damages arising out of the use or inability to use this product.

Some states do not allow the exclusion or limitation of incidental or consequential damages, so the above limitation or exclusion may not apply to you.

ALL EXPRESS AND IMPLIED WARRANTIES FOR THIS PRODUCT, INCLUDING IMPLIED WARRANTIES OF MERCHANTABILITY AND FITNESS FOR A PARTICULAR PURPOSE, ARE LIMITED IN DURATION TO THE WARRANTY PERIOD, AND NO WARRANTIES, WHETHER EXPRESS OR IMPLIED, WILL APPLY AFTER THIS PERIOD.

Some states do not allow limitations on the duration of implied warranties, so the above limitation may not apply to you.

This warranty gives you specific legal rights, and you may also have other rights which vary from state to state. If appropriate, see additional information for extended warranty.



ORECK®

© 2011 Oreck Holdings, LLC.

All rights reserved. All marks, text, logo's, product configurations and registered trademarks are owned and used under the authority of Oreck Holdings, LLC.

22082-01 REV A 06/11 ECN# 10447

Free Manuals Download Website

<http://myh66.com>

<http://usermanuals.us>

<http://www.somanuals.com>

<http://www.4manuals.cc>

<http://www.manual-lib.com>

<http://www.404manual.com>

<http://www.luxmanual.com>

<http://aubethermostatmanual.com>

Golf course search by state

<http://golfingnear.com>

Email search by domain

<http://emailbydomain.com>

Auto manuals search

<http://auto.somanuals.com>

TV manuals search

<http://tv.somanuals.com>