

User's Guide

ORECK[®] Heatwise[™] Heater



Important!

Read this manual carefully, and keep for future reference.

MODELS:

Heatwise[™] HW1500W

Heatwise[™] HW1500P

Heatwise[™] HW1000P

clean home
HEALTHIER. EASIER. SMARTER.[®]

Enjoy

The Oreck logo consists of the word "ORECK" in a bold, white, sans-serif font, centered within a solid black circle.

Congratulations on your purchase of the Oreck Heatwise™ Infrared Heater.

The infrared heating technology utilized in the heater warms the objects in the room, from top to bottom. The heat in the room will never hover uselessly near the ceiling again!

In addition to helping you keep money in your pocket, the Oreck Heatwise™ Infrared Heater goes a step beyond to also enhance the quality of comfort you experience in the heated room. The infrared heating system will not burn, dry out, or otherwise pollute the air with impurities. This protects the natural humidity level and produces a soft ion-balanced heat. Using soft infrared heat is the better, comfortable and more healthy way to heat a room.

Welcome to our **Call. Click. Visit.** customer service program. To speak with an Oreck representative call:

Call



USA: **1•800•989•3535**
Canada: **1•888•676•7325**

Click



On the web, point and click at: **www.oreck.com** or visit www.oreck.com and click locate a store on the top right.

Visit



Visit Oreck in person at one of over 450 store locations. To find the nearest store, please call **888•oreck store (1•888•673•2578)**.

Contents

Safety	1
General Warnings.....	1
Features	3
Operation	4
Power On/Off	4
Setting Temperature	4
Setting Timer	4
Fahrenheit/Celsius	5
Performance Suggestions	5
Maintenance	7
Cleaning the Electrostatic Filter	7
Troubleshooting	9
Warranty	10



IMPORTANT SAFETY INSTRUCTIONS

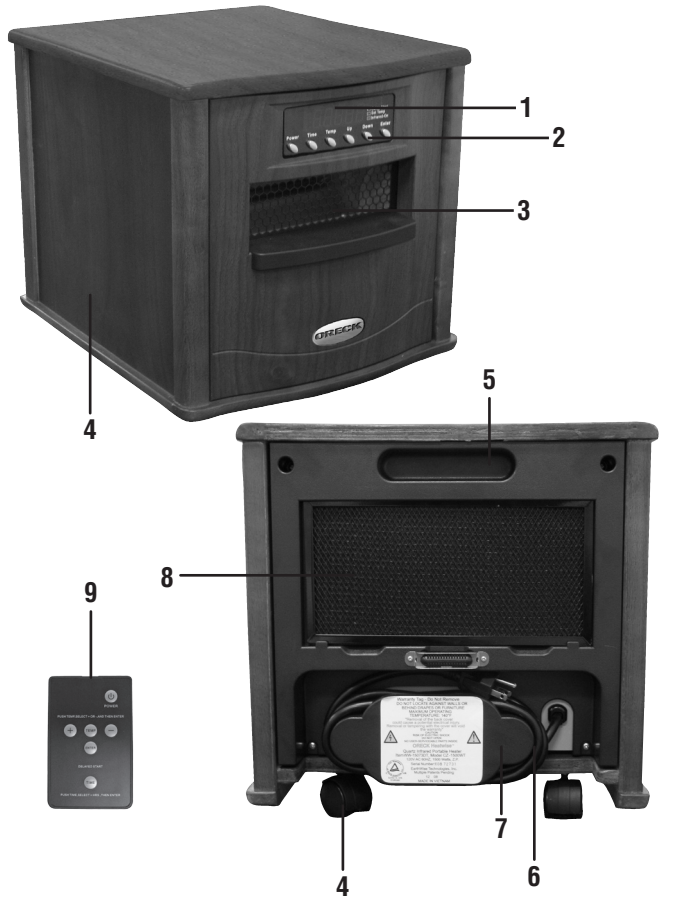
READ ALL INSTRUCTIONS BEFORE USING THE HEATER

- DO NOT plug heater into any other cord connected device such as a power strip, surge protector, multiple outlet adapter, grounding adapter, outlet-type air fresheners or extension cords. Plug into a 3-prong 124V 15 amp or higher grounded circuit receptacle only.
- DO NOT plug the heater into a loose fitting or broken receptacle.
- DO NOT alter the heater's design or you will void the warranty.
- DO NOT block the front or rear of the heater.
- DO NOT place anything directly in front of the heater.
- DO NOT cover the unit as this may block airflow and cause the heater to malfunction.
- DO NOT use the heater outdoors or for heating construction sites.
- This heater is not intended for use in bathrooms, laundry areas and similar indoor locations. Never locate heater where it may fall into a bathtub or other water container.
- DO NOT force the filter to dry using any alternative methods when performing filter maintenance; doing so could damage the filter.
- DO NOT run cord under carpeting.
- DO NOT cover cord with throw rugs, runners or similar coverings. Arrange cord away from traffic area and where it will not be tripped over.
- DO NOT insert or allow foreign objects to enter any ventilation or exhaust opening as this may cause an electric shock or fire or damage to the heater.
- Heater has hot and arcing or sparking parts inside. DO NOT use it in areas where gasoline, paint or flammable liquids are used or stored.

- Heater is hot when in use. To avoid burns, **DO NOT** let bare skin touch hot surfaces. If provided, use handle when moving this heater.
- **DO NOT** operate any heater with a damaged cord or plug or after the heater malfunctions, has been dropped or damaged in any manner.
- To disconnect heater, turn controls to OFF then remove plug from outlet.
- Connect to properly grounded outlets only.
- To prevent a possible fire, **DO NOT** block air intakes or exhaust in any manner. **DO NOT** use on soft surfaces, like a bed, where openings may become blocked.
- Use this heater only as described in this manual. Any other use not recommended by the manufacturer may cause fire, electrical shock or injury to persons.
- Avoid the use of an extension cord because the extension cord may overheat and cause a risk of fire.
- This heater is for use on 120 volts. The adapter should not be used if a three-slot grounded receptacle is available.
- Heater must not be located immediately below a socket-outlet.
- **DO NOT** use this heater in or around a bath, a shower or a swimming pool.

SAVE THESE INSTRUCTIONS

Features



1. **LED Display:** Large display showing desired temp and delay start function.
2. **Control Panel:** Easy-to-push buttons control: power, time, and temp.
3. **Cabinet:** Wood: 3/4 ply - Tuscan walnut finish. Plastic: ABS 94-VO fire retardant plastic
4. **Caster Wheels:** Free floating for easy relocation.
5. **Handle:** Easy transport.
6. **Power Cord:** Plug into the outlet to begin use.
7. **Cord Wrap:** Convenient cord wrap for transport and storage.
8. **Electrostatic Filter:** Removable lifetime electrostatic pre-filter.
9. **Remote:** Credit card size with large buttons.

Operation

Turning Power On

1. Press the Power button on the left side of the Control Panel. The heater's quartz heating elements will light up inside the heater.
2. After a few minutes, once the air within the heater is warm, the heater fan (some models have 2) will begin to operate.

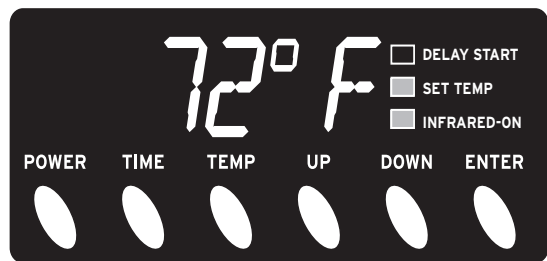
Turning Power Off

1. Press the Power button located on the left side of the Control Panel.
2. The sound of the heater fan will continue until the heat has been completely vented, thus protecting the unit and preventing waste by cycling the remaining heat into the room. (DO NOT unplug the heater until the sound of the fan has stopped. Doing so may cause damage to the unit.)

Setting the Temperature

This feature allows you to set the temperature measured by the units thermostat.

1. Press the Temperature (TEMP) Button on the Control Panel; the Set Temp Indicator will illuminate and the temperature display will flash.
2. Use the Up and Down buttons to select the temperature and press Enter.
3. The Set Temp light will turn off and the temperature is now set.



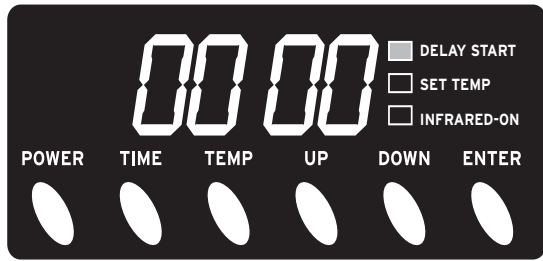
Setting the Timer

This feature allows you to set a future time for the heater to turn itself ON. For example, if you set the time for 1 hour, the heater will turn ON in 1 hour.

1. Turn the Power OFF (heater must be powered OFF to use the timer feature).

Operation

2. Press the Time button of the Control Panel - the two zeros to the right will flash (:00), indicating 0 minutes have been set and the DELAY START indicator will illuminate.



3. Press the UP or DOWN button to select desired number of minutes (up to 59 minutes) that you would like the heater to wait to turn itself on.
4. Press the ENTER button - the two zero button to the left will flash (00:), indicating 0 hours have been set.
5. Press the UP or DOWN button to the desired number of hours (up to 24 hours) and then press the ENTER button.
6. DELAY START indicator will flash until the unit comes on after waiting the period of time you have set.
7. To cancel the timer, press the power button and the timer will stop.

Switching between Fahrenheit & Celsius

Press the DOWN & ENTER buttons simultaneously and hold for about 3 seconds. The display will update automatically.

Suggestions for Best Performance

To assure maximum performance of your Oreck Heatwise™ Infrared Heater, please review the following recommendations:

- Do not locate the heater in an area with a high air exchange rate in and out of the room. Heat produced should be contained in the room.
- Try placing the heater near a warmer inside wall and direct the output toward a cooler outside wall. The cooler outside wall will tend to draw the generated heat towards it, which will allow for more efficient heating.
- Placing the heater next to a cold air return will draw the heat away from the area to be heated. Try closing or covering the

Operation

cold air return. This will allow for more efficient heating. Experiment with the placement of the heater to see what works best for you.

- To ensure maximum efficiency, a 30% minimum relative humidity should be maintained in the heated environment.
- The heater is designed to operate for maximum efficiency in the 68-74 degree range. Due to the soft heat concept, temperatures at 68 degrees F feel as though it were 72 degrees F. This is due to the heat mixing with humidity evenly for head-to-toe comfort.
- When the heater is placed in an isolated area, i.e. basement or recreation area, any existing HVAC heating system vents should be closed in that area, if possible. This allows the heater to maintain the isolated area more efficiently.
- If placing the heater a few feet above the floor, such in rooms with large areas of bare concrete, make sure the heater is secure and won't fall. This will allow for more efficient heating since concrete acts as a heat sink and will tend to draw the heat in its direction. Optimally, concrete floors should be covered to provide some insulation factor from the concrete.
- For zone heating: set your central heating system to a lower temperature. Place the heater in the area you spend the most of your time. Now set the heater to your comfort level.
- When heating larger areas, place the heater in a central location.
- If the heater is used in an extremely dirty area, the filter must be cleaned more frequently to maintain heater performance.

Maintenance

The only maintenance that is required for the heater is the periodic cleaning of the heater's electrostatic filter (located at the back of the unit). This cleaning should be performed at least once a month, or earlier as dust becomes visible on the filter, to ensure efficient operation of the heater.

Cleaning the Electrostatic Filter

Clean the filter often to provide for maximum performance. When necessary, wipe the cabinet clean with a soft damp cloth and/or furniture polish.



Removing Filter



Replacing Filter

1. Power the heater off by pressing the Power Button, located on the left side of the Control Panel. (Note: The sound of the heater's fans will continue until the heat has been completely vented, thus protecting the unit and preventing waste by cycling the remaining heat into the room. **DO NOT** unplug the heater until the sound of the fan has stopped. Doing so may cause damage to the unit.)
2. When the heater's fans have stopped (the heater will become completely silent) unplug the heater.
3. Release the Electrostatic Filter by pushing the filter up from below.
4. Remove the Electrostatic Filter by pulling the filter down and out.
5. Clean the filter by vacuuming the filter until clear.
6. Replace the filter by sliding the top upwards into the spring-loaded slot on the back of the heater, then gently press the bottom of the filter into place.

Maintenance

Storage

When the heater is not being used for an extended period of time, observe the following steps to preserve the life and performance of the unit:

- Unplug heater (Do not unplug heater while heater is running).
- Gently wrap the power cord into the cord storage compartment in the back of your heater. This will help prevent undue wear and tear on the cord.
- Cover the heater to prevent dust from accumulating on or in heater.
- Store heater in a dry, low dust environment.

NOTE: Before resuming use of heater, ensure the filter and front grille are clean and free of all dust and dirt. Also check the entire length of the power cord to ensure no damage has compromised the integrity of the cord.

Troubleshooting

Service problems that appear to be major can often be solved easily. You can be your own troubleshooter by reviewing this guide. All other servicing should be done by an Oreck authorized service center.

Problem	Solution
The heater's airflow has been reduced	<ul style="list-style-type: none"> • Make sure the electrostatic filter is clean. • Check front grill and look behind rear air intake for any objects that could obstruct air-flow. • If the heater's airflow is still diminished or has stopped, please contact Customer Service.
The heater stays ON after I push the Power Button to turn it off	<ul style="list-style-type: none"> • This is a normal function of the heater. DO NOT unplug the heater until you no longer hear the fan running. During this time, the heater is cooling down.
The heater's display is showing a line of dots	<ul style="list-style-type: none"> • This is part of the heater's normal operation. After a period of inactivity, the heater will enter into a "screen saver" mode to conserve power. This will not affect the heater's operation. When any function key is pressed, the heater's display will reappear.
Heater thermostat temperature does not match wall thermostat temperature	<ul style="list-style-type: none"> • Contact Customer Service to obtain programming instructions for matching your Heatwise thermostat settings with your existing wall thermostat.
The heater will not turn on.	<ul style="list-style-type: none"> • Test the outlet to make sure there is power available and then check the heater display for the flashing Time Delay Light. Press the Power Button to turn off the timer and resume normal operation of the heater.
Until still does not operate properly.	<ul style="list-style-type: none"> • Contact Oreck for service.

Warranty

ORECK MANUFACTURING COMPANY: (Oreck Manufacturing Company gives you the following limited warranty for this product only if it was originally purchased for residential use, not for resale, from Oreck or an Oreck Authorized Retail Dealer.)

Oreck will repair or replace, free of charge, to the original purchaser, any part that is found to be defective in material or workmanship within three (3) years following the date of purchase for all residential models. NOTE: If the unit is used commercially, a one (1) year overall warranty applies.

This limited warranty does not cover the replacement of expendable or consumable parts such as filters, cartridges, and other parts subject to normal wear unless they are defective in material or workmanship.

This limited warranty does not apply to any part subjected to accident, abuse, commercial use, alteration, misuse, damage caused by act of God, the use of voltages other than on the data plate of this product or service of this product by other than Oreck or a participating Factory Authorized Service Center.

Oreck does not authorize any person or representative to assume or grant any other warranty obligation with the sale of this product.

Oreck's limited warranty is valid only if you retain proof of purchase from Oreck or an Oreck Authorized Retail Dealer for this product. If you purchase this product from any other source, your purchase is "AS IS," which means Oreck grants you no warranty, and that you, not Oreck, assume the entire risk of the quality and performance of this product, including the entire cost of any necessary servicing or repairs of any defects.

Oreck's liability for damages to you for any costs whatsoever arising out of this statement of limited warranty shall be limited to the amount paid for this product at the time of original purchase, and Oreck shall not be liable for any direct, indirect, consequential or incidental damages arising out of the use or inability to use this product. Some states do not allow the exclusion or limitation of incidental or consequential damages, so the above limitation or exclusion may not apply to you.

ALL EXPRESS AND IMPLIED WARRANTIES OTHER THAN THE LIMITED WARRANTY SET FORTH ABOVE, FOR THIS PRODUCT, INCLUDING IMPLIED WARRANTIES OF MERCHANTABILITY AND FITNESS FOR A PARTICULAR PURPOSE ARE EXPRESSLY DENIED.

This warranty gives you specific legal rights, and you may also have other rights which vary from state to state.



ORECK®

ORECK®

© 2009 Oreck Holdings, LLC.

All rights reserved. All marks, text, logo's, product configurations and registered trademarks are owned and used under the authority of Oreck Holdings, LLC

21085-01 REV A 07/09 ECN # R-9474

Free Manuals Download Website

<http://myh66.com>

<http://usermanuals.us>

<http://www.somanuals.com>

<http://www.4manuals.cc>

<http://www.manual-lib.com>

<http://www.404manual.com>

<http://www.luxmanual.com>

<http://aubethermostatmanual.com>

Golf course search by state

<http://golfingnear.com>

Email search by domain

<http://emailbydomain.com>

Auto manuals search

<http://auto.somanuals.com>

TV manuals search

<http://tv.somanuals.com>