



OREGON SCIENTIFIC

www.oregonscientific.com

DIGITAL CAMERA MODEL DS-3868

The DS-3868 Digital Camera makes taking filmless photos fun and easy!

Your choice! - Take 20 photos at a higher resolution or 80 photos at a more moderate resolution. Download your photos to your PC (connection cable included) and then the DS-3868 is ready to take more photos! Or capture live action using the video cam feature and the included Windows Netmeeting software.

Use the ArcSoft® PC software (included) to modify your photos and add special effects or create montages! Post your photo "masterpieces" on your website, incorporate them into email greeting cards to send to friends and relatives, or print them out on your color printer (color printer not included). Easily create photo albums on your PC to save all the fun and memories.

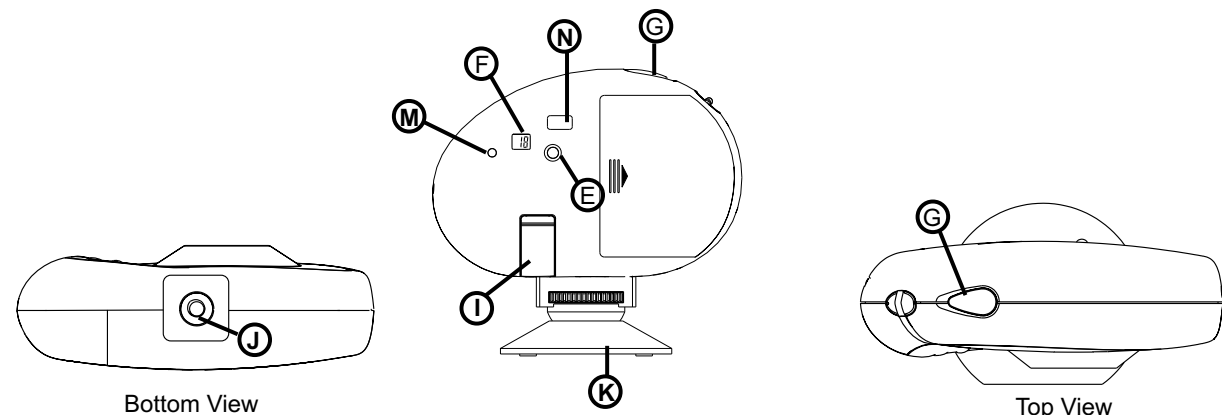
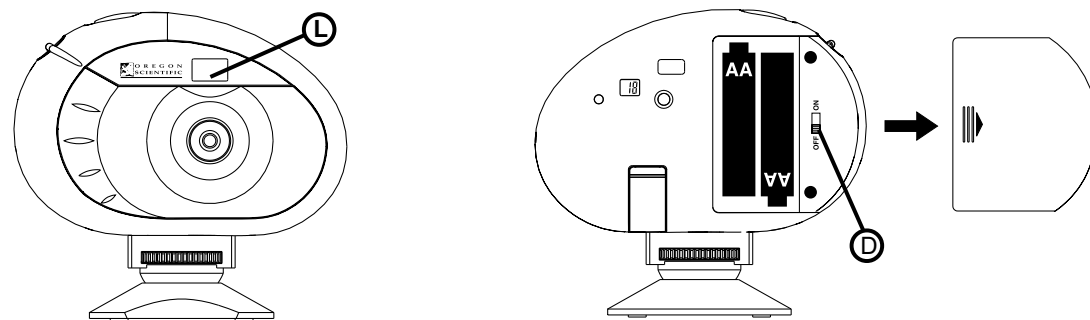
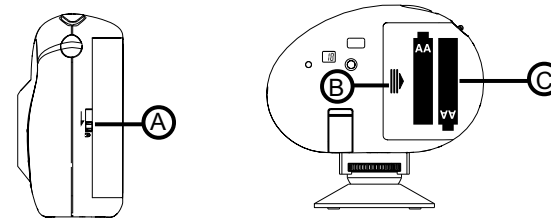
In addition, you can use the Microsoft Windows Netmeeting software (included) to have a video conference with your friends.

4. Taking Photos

- Unlock (A) and remove the (B) Battery Compartment Door to access the (D) ON/OFF slide switch.
- Slide the ON/OFF switch to the "On" position.
- Close the (B) Battery Compartment Door.
- Press (E) MODE to activate the camera and select the desired camera mode.
- When activated, (M) the STATUS LED will show a steady red light.
Note: After 30 seconds of no activity, the camera will default to Standby mode. When the camera is not active the Status LED will not be lit.
- Look through the (N) VIEWFINDER and make sure that you can see the subject clearly.
- Press (G) CAPTURE to take the photograph.
- The (F) PHOTO COUNTER will decrease by a value of one with each photo taken.
- When a photograph is taken, a single short beep will be emitted. After the beep sounds, the camera is ready to take another photograph.
Important: When the maximum number of photos have been taken, (F) the PHOTO COUNTER will show "00." If (G) CAPTURE is pressed when "00" is displayed, a series of short beeps will sound indicating that the maximum number of photographs have been taken. The photographs must be downloaded or cleared from the camera before more photographs can be taken. (See Downloading Photographs.)
Note: The DS-3868 will not take photos in low light conditions. When the light is too low for the DS-3868, a beep will be emitted when photo is attempted.

1. Install the Batteries

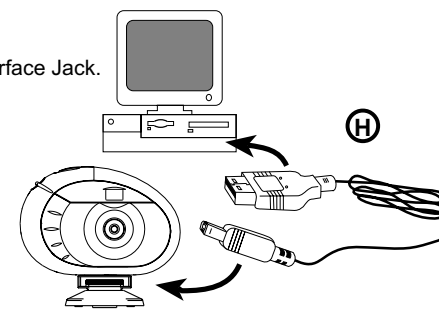
- To install the batteries, unlock the battery compartment by sliding the (A) lock located on the side of the camera to the unlocked position.
- Remove the (B) battery compartment cover and insert (C) the batteries (included) into the battery compartment with the polarity in the direction as shown inside the compartment.
- Replace the cover back over the battery compartment and slide the lock to the locked position.
Note: The DS-3868 will not operate without battery power. When the batteries need replacing the (F) PHOTO COUNTER will flash rapidly and the user will not be able to take photos. Always download photos to the PC prior to replacing batteries to avoid memory loss.
Important: Do not mix old batteries with new batteries. Always dispose of exhausted batteries properly. Do not insert anything except batteries into the battery compartment as this may cause damage to the camera.



3. Connecting the Camera to Your PC

- Connect and install the (H) USB Cable (included) to the USB port of your PC.
- Open the (I) Camera Connection Cable Door and plug the cable into the PC Interface Jack.
- Install the ArcSoft® software (included) on your PC.
- Follow the instructions for downloading photographs.

- The DS-3868 has video streaming capability. To use the web cam feature:
- Screw the (J) DS-3868 securely to the (K) mini-stand. The mini-stand rotates and swivels.
 - Position the camera where the (L) Front-View Viewfinder is facing the subject.
 - Follow instructions provided in the Windows Netmeeting software for video conferencing function.



2. Select the Camera Mode

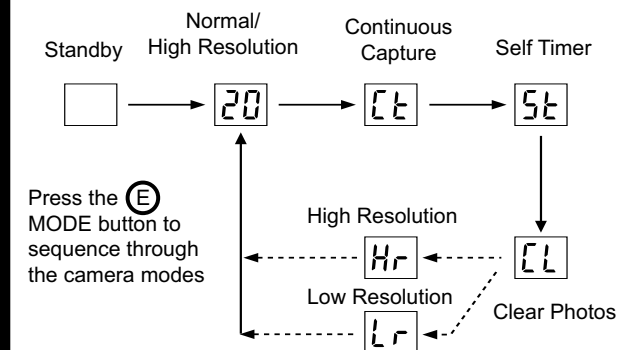
Select the Camera Mode

After the camera is turned on, select the desired camera mode. The mode selections are: Standby, Normal, Continuous Capture, Self Timer, Clear Photos and Resolution Setting.

- To turn the camera on, slide the (D) ON/OFF switch to the "On" position. The ON/OFF slide switch is located under the battery compartment door.

Note: To conserve battery power the DS-3868 will automatically default to Standby mode after 30 seconds of no activity. Press (E) MODE to reactivate the DS-3868.

- Press the (E) MODE button to sequentially advance through the mode selections. The different modes are:
Standby: The DS-3868 automatically defaults to this mode conserve power after 30 seconds of no activity.
Normal mode: In this mode the DS-3868 has a maximum 20 photo capacity at the higher resolution of 352 x 288 pixels. In Low Resolution the the maximum number of photos is 80. With each photo taken the (F) PHOTO COUNTER will decrease by one. In Normal mode "HR," (high resolution) will be briefly displayed in the (F) PHOTO COUNTER window and then be replaced by "20" indicating the maximum photo capacity.
Continuous Capture: In continuous capture the DS-3868 will take photos rapidly without interruption until the maximum number of photos has been taken. To use this feature, press and hold the (G) CAPTURE button. When the maximum number of photos have been taken the DS-3868 will emit an audible tone. Continuous capture photos can be converted to video file format (.AVI file) on the PC. In Continuous Counter mode the symbol "Ct" will be displayed in the (F) PHOTO COUNTER window.
Self Timer: The self timer feature delays taking the photo for 10 seconds. To use this feature, press the (G) CAPTURE button once to activate the self time. The self time symbol "St" will be displayed in the (F) PHOTO COUNTER window. During the 10 second interval an audible tone will sound every second. At the end of the 10 second delay period, the DS-3868 will take the photo. The (F) PHOTO COUNTER will decrease the number of photos by one.
Clear Photos: Clear Photos mode will permanently delete all photos stored in the DS-3868. Before activating the Clear Photos mode make sure that all photos have been downloaded to the PC. In Clear Photo mode the symbol "CL" will be displayed in the (F) PHOTO COUNTER window. To use this feature, set the mode to "CL" and then press (G) CAPTURE button twice. The (F) PHOTO COUNTER window will reset and display the photo capacity for the selected resolution.
Low Resolution: In the low resolution mode the DS-3868 has an 80 photo capacity at a resolution of 176 x 144 pixels. In the low resolution mode, the symbol "Lr" will be displayed in the (F) PHOTO COUNTER window.
Press the (G) CAPTURE button again and the (F) PHOTO COUNTER will then display the maximum capacity of 80 photos.



Installing the Software

1. Make sure that no programs, such as games or anti-virus software, are running on the PC. If programs are open, close and exit from the programs before going on to step 2.
2. Insert the ArcSoft® CD-ROM into the CD-ROM drive of the PC.
3. After a short period, a setup menu will appear on the PC screen.
4. From the setup menu, choose what language you want the setup instructions to be in. After highlighting your selection, click OK.
5. Follow the on-screen instructions to install the software.
6. Register the software. To register the software, click on PROGRAMS/ARCSOFT/REGISTER & UPGRADE. Follow the on-screen instructions to complete registration.

Important: If the setup menu does not automatically appear after inserting the CD-ROM in the CD-ROM drive, follow these instructions: In Windows, click on START and then click on RUN from the start menu. Type: d:/setup and press the Enter key on your keyboard. The setup portion of the software will activate. Follow the on-screen instructions to complete installation and registration.

Note: 1) The DS-3868 does not need to be connected to the PC during the software installation process. 2) When you finish installing the supplied software, click "Yes, I want to restart my computer now" only if the message box displays "InstallShield Wizard Complete." For other situations, always click "No, I will restart my computer later."

Downloading Photos

To run the ArcSoft® software, from the main menu screen in Windows, click on "Start." After clicking on "Start," click on "Programs" and then on "ARCSOFT Photo Studio Suite." Once the ArcSoft® menu appears, click on the program that you want to use.

Downloading Photos:

1. Connect the DS-3868 to the PC. (See Connecting the Camera to Your PC.) Slide the camera ON/OFF switch to the "On" position.
2. Open the ArcSoft® software and from the main menu select and click on "Photo Base" to open.
3. From the "Photo Base" menu, click on "Acquire" (the camera icon). A drop down menu will appear. Select "Oregon Scientific" and click "Select."
4. The photos will be displayed on the screen in thumbnail form. (The photos will be in a reduced size and shown on the screen at the same time.)
5. To download all the photos to the PC, click "Select All" and then click "OK". To download selected photos, click on each desired thumbnail photos and then click "OK".
6. To stop the download process, click on the "X" in the right corner of the "Oregon Scientific."

Customer Assistance

Should you have questions or require additional information, please contact our Customer Service Department at 800-853-8883 or via email at helpme@oscientific.com

Warranty

Oregon Scientific warrants this product to be free of manufacturing defects for 90 days from retail purchase. Defective products are returned to the place of retail purchase.

This warranty does not cover products subjected to tampering, abuse, misuse or accidental damage.

Software

To use the exciting software included with your DS-3868, click the start button in Windows. From the START menu, click PROGRAMS then click on the software you wish to use. Help screens are included with each program. Important: Before using the software, photos must be downloaded from the DS-3868 to the PC.

Photo Base

With "Photo Base" you can create photo albums, slide shows, video postcards, greeting cards, or send your photos by email to friends and relatives. **Note:** In the photo album drop-down menu, there are two choices: "photos" and "new." The photo's included in the "photo" selection have been selected and included by ArcSoft® and have not been taken with the DS-3868.

Photo Studio

After photos have been arranged in a photo album, with "Photo Studio" you can change the way they look. Use "Photo Studio" to edit and retouch photos, change colors, cut and paste, and add special effects.

Photo Fantasy

"Photo Fantasy" is a collection of photos, including football and basketball players, ballerina and astronaut, to which you can add your face or any other face from a downloaded photo. **Note:** The CD-ROM must be in the CD-ROM to use this software.

Photo Montage

Turn your photo into a montage collage with "Photo Montage."

Photo Printer

With a compatible color printer connected to your PC, you can print out your photos using "Photo Printer."

Video Creator: This software allows you to make a video file (.AVI) from the photos and to play then in video format. Software may be used with photos that have downloaded to the PC or still in the DS-3868. However, if photos are still in the DS-3868, the DS-3868 must be connected to the PC to use the software.

Windows NetMeeting®: This software allow you to communicate directly on video. To use this software you must have Microsoft Internet Explorer® installed. If Microsoft Internet Explorer® is not already installed on your PC, it can be installed from the CD-ROM. **Important:** An Internet email account is required for connection to the Internet. **Note:** The DS-3868 must be connected to the PC to use the video feature and software.

Notice of FCC Compliance

This device complies with Part 15 of the FCC Rules. Operation is subject to the following two conditions: 1) This device may not cause harmful interference, and 2) This device must accept any interference received, including interference that may cause undesired operation.

Warning: Changes or modifications to this product not expressly approved by the party responsible for compliance could void user's authority to use this product.

Note: This product has been tested and found to comply with the limits for a Class B digital device, pursuant to Part 15 of the FCC Rules. These limits are designed to provide reasonable protection against harmful interference in a residential installation. This product generates, uses and radiate radio frequency energy and, if not installed and used in accordance with the instructions, may cause harmful interference to radio communications.

However, there is no guarantee that interference will not occur in particular installation. If this product does cause harmful interference to radio or television reception, which can be determined by turning the product off and on, the user is encouraged to correct the interference by one or more of the following measures:

- Increase the separation between the product and the affected equipment.
- Consult the dealer or an experienced radio/television technician for assistance.

Tested To Comply With FCC Standards FOR HOME OR OFFICE USE

Important: Shielded cables must be used with this product to ensure compliance with the Class B FCC limits.

Taking Care of Your Camera

With careful treatment you will have many years of fun with your DS-3868 Digital Camera!

1. Do not immerse the camera in water. Water will damage the electronic components.
2. Do not bang or drop the camera as this may damage the electronic components.
3. Do not clean the camera with household cleaners or chemicals.
4. To clean the camera casing, carefully wipe the casing with a clean soft cloth that has been slightly dampened with water.
5. To clean the lens, gently blow on the lens to remove dust and dirt, then wipe the lens with a camera lens cleaning tissue.
6. Turn the camera off when not in use.
7. When battery power is exhausted, replace the old batteries with new batteries. Do not mix old batteries with new batteries.
8. Only insert the batteries in the polarity direction as shown in block 1, above.
9. Do not put anything into the battery compartment except batteries.
10. Batteries contain dangerous chemicals and if mistreated or improperly disposed of can cause harm, injury or damage.
11. Do not open the camera casing or tamper with the camera's electronic components; doing so will void the camera's warranty.

Specifications

Memory:	20 Pictures at 352 X 288 pixels 80 Pictures at 176 X 144 pixels
Color Resolution:	24 bit
Focus Range:	50 cm to Infinity (Auto free)
Memory Type:	SDRAM (2Mbyte)
Create Video File:	8 Seconds @ 176 X 144
PC Camera Mode:	Yes
Continuous Capture:	10 fps
Self Timer:	10 Seconds
PC Interface:	USB
Buzzer Output:	Yes
Tripod Mount:	Yes
Display:	LCD Status Display
Power:	2 AA-Size 1.5V Alkaline Battery
Battery Life:	Approximately 10 hours of continuous use
Automatic Off:	30 Seconds
Temperature:	Operation: 32°F - 104°F (-20°C - 60°C) Storage: -4°F - 140°F (-20°C - 60°C)
Weight:	3.40 ounces (97 grams)
Dimensions:	4.4" L X 1.6" D X 3.0" H 112 L X 40 D X 76 H (mm)
Accessories:	USB Cable Strap Mini-Stand Cradle



**O R E G O N
S C I E N T I F I C**

www.oregonscientific.com
Portland, Oregon and Offices World-wide
Customer Assistance: 800-853-8883 or via email at:
helpme@oscientific.com

086-002208-154

Free Manuals Download Website

<http://myh66.com>

<http://usermanuals.us>

<http://www.somanuals.com>

<http://www.4manuals.cc>

<http://www.manual-lib.com>

<http://www.404manual.com>

<http://www.luxmanual.com>

<http://aubethermostatmanual.com>

Golf course search by state

<http://golfingnear.com>

Email search by domain

<http://emailbydomain.com>

Auto manuals search

<http://auto.somanuals.com>

TV manuals search

<http://tv.somanuals.com>