

AVIAh

Portable Multimedia Player/Recorder

User's Manual

Thank you for purchasing the Ovideon AVIAh Portable Multimedia Player/Recorder/TV. Read this manual carefully before using the AVIAh. A good understanding of its features and operation will allow you to achieve optimum performance and enjoyment.

Please keep this manual for future reference.

The content of this manual is furnished for informational use only; it is subject to change without notice, and should not be construed as a commitment by Ovideon Inc.. Ovideon assumes no responsibility or liability for any errors or inaccuracies that may appear in this document.

Ovideon Inc.

<http://www.ovidion.com>

<http://www.aviah.com>

General Features

2

* What is AVIAh?

The Ovideon AVIAh Portable Multimedia Player/Recorder/TV features one of the world's first implementations of OLED (Organic Light Emitting Diode) technology in a portable media recorder/player/TV. The AVIAh is a personal TV receiver (Off Air or Cable) with program recording and playback capability. The Ovideon AVIAh also features a Multi-Media Video Player, MP3 and WMA Music Player, JPEG slide show viewer and audio/video recorder. Enjoy your media on the stellar OLED screen or connect the video/audio output to your projector or TV for an enhanced viewing experience.

Small and Light

Its small, light, compact and sleek contemporary design makes it highly fashionable and cool. The AVIAh fits easily in your shirt pocket, purse or in the palm of your hand, and weighs in at only 5.1 ounces with the battery! The AVIAh is the ultimate in portable entertainment.

EASY to Use

The integrated USB2.0 interface allows easy drag and drop file transfer capability. The on screen display navigation is a dream to use. You can access your files and play them with just the flip of a joy stick. It's that easy!

JPEG Picture Viewer

AVIAh's integrated Digital Album allows you to drag and drop your JPEG digital camera pictures into the Player and create slide shows or slide presentations. Share your pictures with family and friends!

Integrated OLED Screen

No matter how you hold the AVIAh you can be rest assured that the picture displayed on this Portable Multimedia Recorder/Player/TV will be clear and bright from any viewing angle. The integrated OLED (Organic Light Emitting Diode) display is a revolution in display technology. It offers brilliant, vivid and vibrant color with striking brightness unmatched by any other small screen portable player. The picture quality of AVIAh OLED is phenomenal!

Music Player

Listen to your favorite music in either MP3 or WMA file format. Just drag and drop your music files directly into the AVIAh and enjoy!

Super Fast OLED Response Time

With our industry leading 5ms panel response time moving objects are not blurred and video is seen with the utmost clarity, sharpness and detail.

Video Player

The AVIAh offers you the ultimate in video media flexibility. You can store and play video files such as DIVX, XVID, WMV9, AVI and ASF. Its not enough just to take your music with you, with the AVIAh you can take your videos with you too. Now that's convenience!

TV/Cable Ready Tuner and Recorder

Connect the included telescoping antenna or attach a cable line to your AVIAh and tune in your favorite shows or sports programs. You can watch your favorite programs and record them! While you're at it, you can also rewind and fast forward through them too!

Real Time Recorder

Record your family videos, your company training videos or connect directly to your video camera for some real time recording. The integrated audio/video input and recording capability of the AVIAH allows you to connect to your DVD or VCR so you can take your favorite video recordings with you wherever you go.

File Storage and Back up

Since the AVIAh acts as a mass storage device you can download or back up virtually any file to the internal 1" subminiature HDD. You can carry your files wherever you go and have them ready whenever you need them.

Voice Recorder

The integrated Voice recorder allows you to record meetings and conversations or just to take notes. It's a great way to remember your next appointment or to create a to-do and shopping list.

Big Screen Playback

For the ultimate in viewing pleasure the integrated video output of the AVIAh allows you to connect it to your big screen TV or projector. Any video or music file recorded on the AVIAh can be watched on your big screen display or heard on your stereo system.

Contents

General Features	2~3
What is included in the box?	7
Controls and Connections	8
Important Product Safety Instructions	9~11
Before Using	
How to turn the power ON/OFF?	12
How do I connect to my computer and how do I download files?	13
Can I format the AVIAh internal Hard Drive?	14
My Portable Media Player is displaying a "There is not enough HDD space" message.	15~16
Is it possible to see files other than multimedia files in HDD?	17
Can I connect the AVIAh to external A/V equipment?	18
How do I connect the antenna and cable?	19
Are there any precautions when using the battery?	20
What are the functions of each button?	21~22

How to Operate each Mode

When Watching TV [NTSC System]	23~24
When Watching TV [PAL System]	25~28
When Listening to the Radio [Option]	29~30
When Displaying an Image File	31~32
Can I change the Background Images of the On Screen Display?	33
When Playing a Moving Picture File	34~36
When Playing Audio Files	37~39
Does the Portable Media Player have an Audio Equalizer?	40
Can I create Playlists?	41~43
When Recording Voice	44~45

How to perform System Set Up

Picture Adjustment	46~47
System Setup	48
Setting Other Functions	49

Contents

Other Functions

Installing Windows 98 SE/ME Driver	50
Upgrading Firmware	51
Installing TransC Software on your PC	52
Using AVIAh TransC	53~58
* AVIAh TransC Conversion Program	54

Product Specifications & Features

59

Product Inquiry & Customer Service

60-61

To ask for our service through the Internet
Notices
FCC Information

Trouble Shooting

62

PRODUCT WARRANTY

63

Limited Warranty

64-65

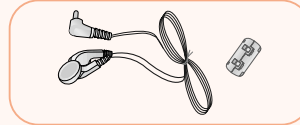
AVIAh Portable Recorder



※ Accessories are subject to change without notice.

※ When connecting earphone / core - Refer to the antenna connection diagram located on page 16

Earphone / Ferrite Core



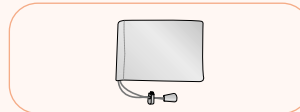
Installation CD



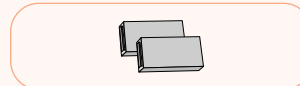
Audio / Video In/Out Cable



Carrying Case



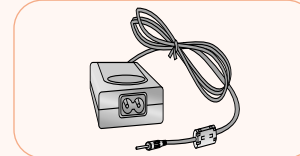
Battery



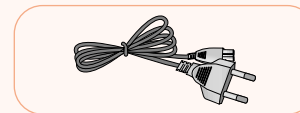
USB Cable



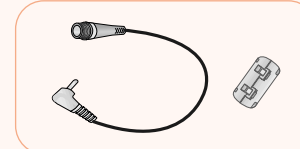
DC Adapter



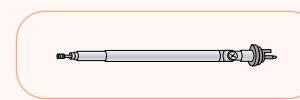
Power Supply Cord



Indoor Antenna Cable / Ferrite Core



Detachable Antenna for Outdoor



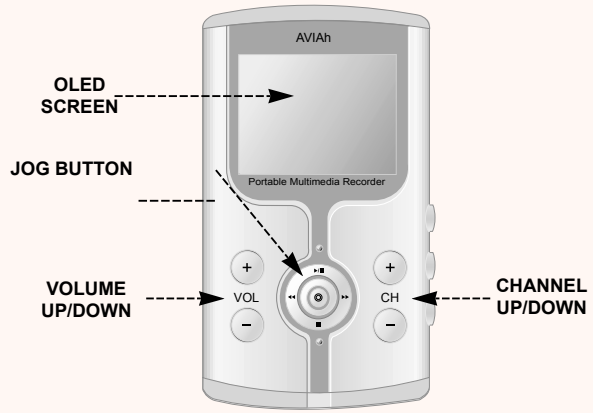
User's manual



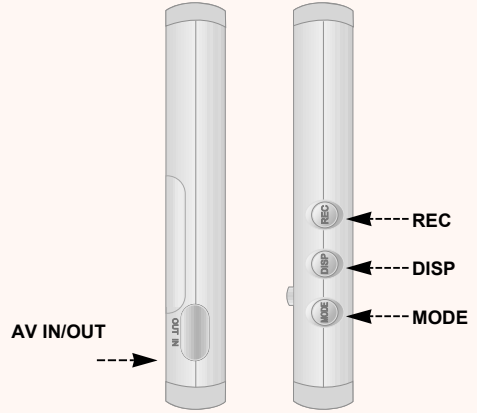
What is included in the box?

Controls and Connections

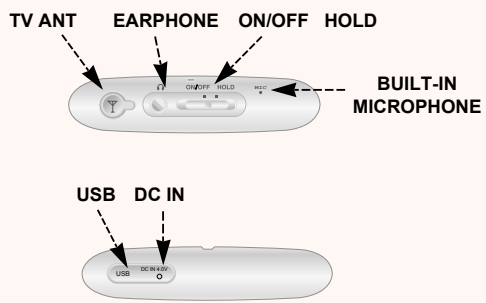
Front/Rear



Left/Right Side



Top/Bottom Side



※ **Follow and obey all warnings and instructions. For your safety, please read all of the safety and operating instructions before you operate this product and keep this booklet for future reference.**

CAUTION!

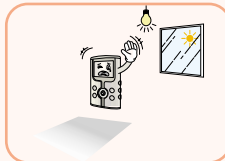
Do not attempt to open and service this product yourself. Doing so may further damage the product. If any service is required, please contact the location of purchase or our website (www.ovideon.com).

WARNING!

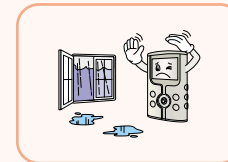
Copying CD, music, video, image files for sales purpose violates the copyright law. Copying all or part of data, art, presentation protected by copyright law may require authorization from the owner of the copyright; hence you should be aware of the all laws governing copyright in your country.

Other Warnings & Precautions

Avoid exposure to direct sunlight, and do not place this unit near any heat sources such as radiators, heat registers, stoves, etc..



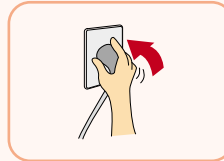
Do not place this unit near water or moisture for extended periods of time.



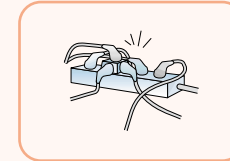
Important Product Safety Instructions

10

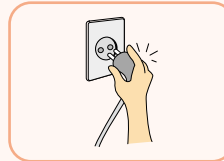
The plug should fit into the power outlet completely.



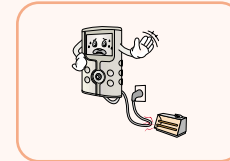
When using a power strip, do not overload it by connecting too many devices.



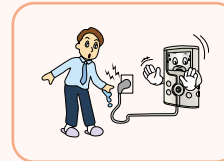
When unplugging the power supply cord, be sure to grasp the power supply plug firmly and remove.



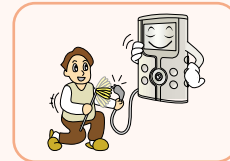
Do not place the power supply cord near heat sources.



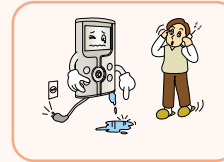
Do not touch the power supply cord when your hands are wet.



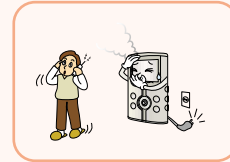
When the power plug pins are contaminated with dirt; wipe them clean before plugging into the outlet.



When water or foreign material gets inside the unit, first turn off the power switch on the unit, remove the battery and then call your Purchase location for service.



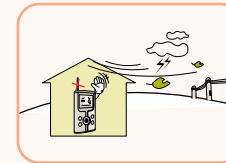
When smoke or strange smells occur, or foreign material is inserted, turn off the power, then call your Purchase location.



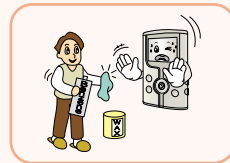
Do not drop or strike the unit.



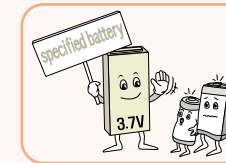
When thunder or lightning occurs, do not watch TV.



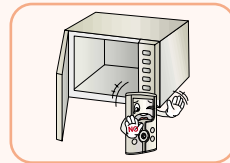
When cleaning this unit, wipe with soft clean cloth. Do not use wet cloth, polishing agent, benzene, wax, or alcohol.



Only use specified batteries. Do not substitute.



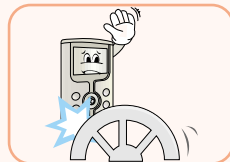
Do not put this unit into heating appliances such as a microwave or oven.



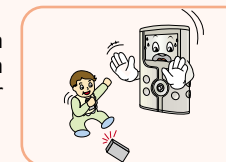
Do not damage the battery by sharp objects (awl, knife). Do not short circuit the battery contacts.



Do not use this unit while driving or walking. (You may cause or be involved in an accident).

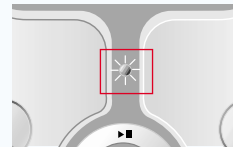
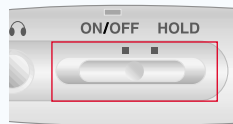


Keep batteries away from children. Do not allow children to put the batteries in their mouths.



Important Product Safety Instructions

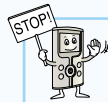
How to turn the power ON/OFF?



Pull and hold the Sliding Switch to the ON/OFF position for 3 seconds, then release.
The green lamp will flicker and the AVIAh will turn on.

Green lamp will flicker.

After boot up, the home page will appear.

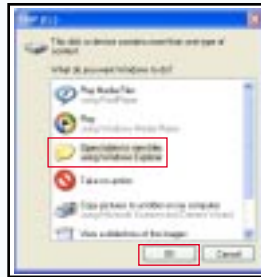
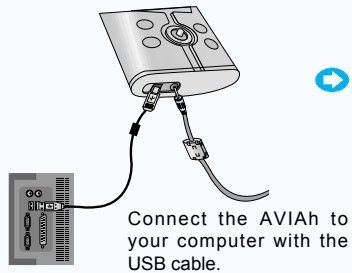


- ♣ To turn the power ON/OFF, pull and hold the Sliding Switch to the ON/OFF position, then release.
- ♣ If using the AC adapter; turn the power ON/OFF using the Sliding ON/OFF Switch AFTER the green lamp turns off.
- ♣ If the system will not operate:
 - Pull the Sliding Switch to the ON/OFF position for approximately 10 seconds, then release. The system will restart automatically.
 - If the system still does not work, disconnect the batteries and the AC adapter. Reconnect the power supplies and try again.

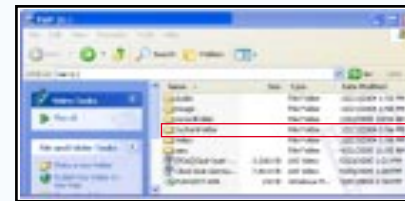
How do I connect to my computer and how do I download files?

When connecting this unit to your computer for an extended period of time, check that the battery has a sufficient charge. If the battery is running low please connect the AC adapter immediately to avoid any loss of data.

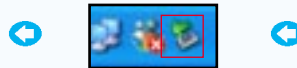
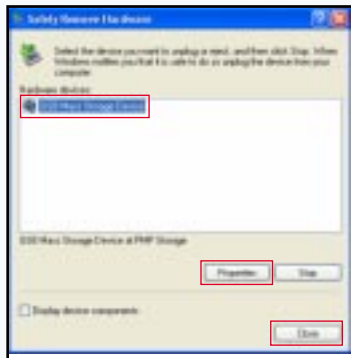
(E.g.) WINDOW XP



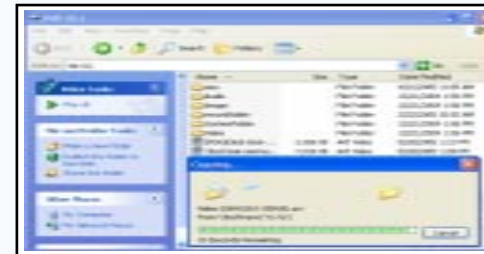
After connecting, the PC recognizes AVIAh as new hardware. The AVIAh will appear as a logical HDD on your PC.



Select a folder or file to be copied from "My Computer" or "File Search". Drag and drop the file into the AVIAh HDD. You can create your own folders as desired.



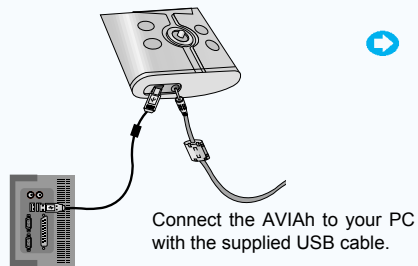
After finishing all downloads, execute "Hardware Safe Removal". This safely disconnects the AVIAh from your PC. After executing "Hardware Safe Removal", detach the USB cable.



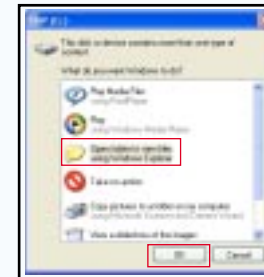
Downloading will be carried out through the USB cable.

Can I format the AVIAh internal Hard Drive?

Yes, but it is not necessary to do so. The AVIAh comes ready to use. If you desire to format the HDD then first backup all of the files contained in the "Systems Folder" of the AVIAh before formatting the hard drive (HDD) of this unit. After formatting the HDD, make a "System Folder" on the AVIAh HDD and copy the back up files into the folder.



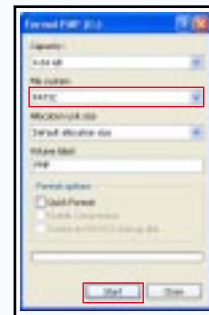
This message will appear on the screen of the AVIAh when connected to the PC via USB.



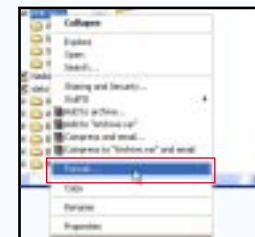
Press "OK".



♣ When formatting, select file system as FAT for 2.5GB hard disk AVIAh, and FAT32 for 5GB AVIAh.



Select the Capacity and File System, then press "START".



Right Click on the AVIAh folder and select "FORMAT".







My Portable Media Player is displaying a "There is not enough HDD space" message.

My battery ran out while I was connected to my PC via the USB cable and now my Portable Media Player will not boot up.

What can I do to fix this problem?

If you encounter a condition as described above there may be file errors or file access errors on the Portable Media Players Hard Drive. To check and fix any file errors please follow the procedure outlined below.

Please connect Portable Media Player to your PC via the supplied USB cable. The Portable Media Player will be recognized as a logical Hard Drive on you PC. See example below.

Name	Type	Total Size	Free Space
 3½ Floppy (A:)	3½ Inch Floppy Disk		
 (C:)	Local Disk	55.9GB	55.5GB
 (D:)	CD-ROM Disc		
 Pmp (E:)	Local Disk	4.64GB	1.90GB
 Printers	System Folder		
 Control Panel	System Folder		

Before using

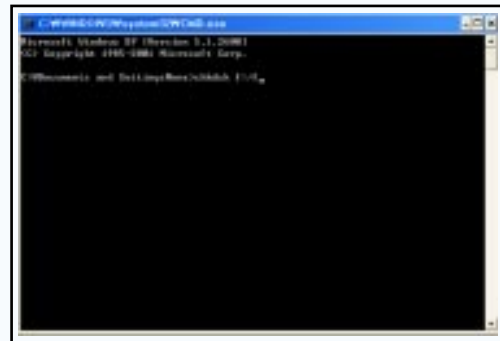
In order to check the file integrity of the Players HDD and to fix any errors from Windows Start Menu go to Start>RUN. In the RUN prompt window type 'CMD' and hit the 'ENTER' Key.

The DOS prompt will open.

In the DOS prompt type 'CHKDSK f: /f' and press the ENTER key.

→ f: is the Portable Media Players Drive Letter (This drive letter may be different on your PC)

→ /f: tells Windows to fix any HDD problems

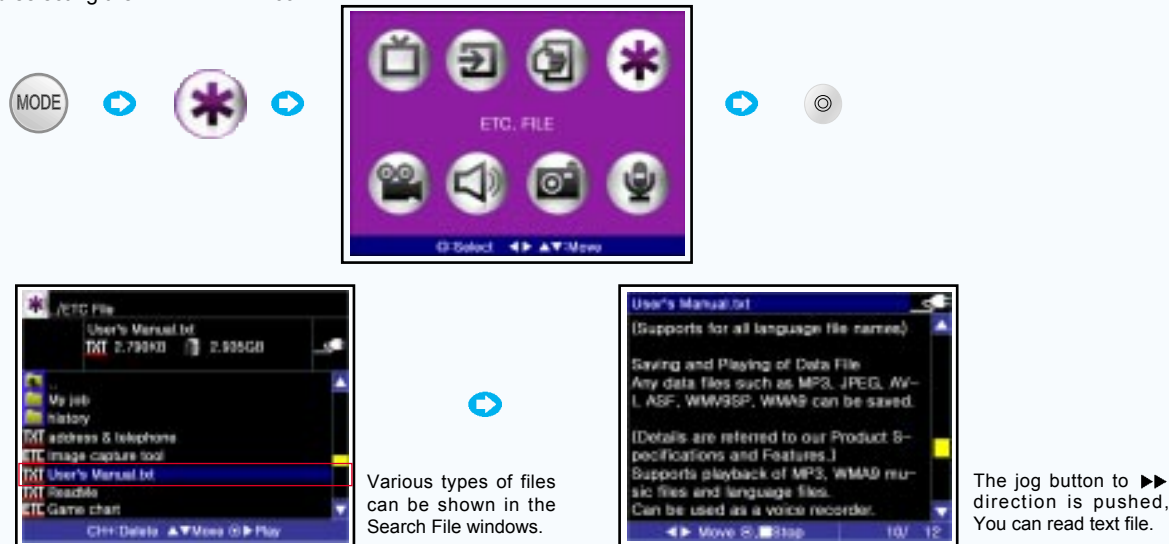


After performing CHKDSK on the Portable Media Player and fixing any file issues restart your Portable Media Player. The Player should function normally.

Performing CHKDSK regularly on any HDD device will help maintain good functionality.

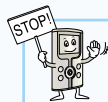
Is it possible to see files other than multimedia files in HDD?

Yes, files stored in the hard disk other than video, audio, JPEG, voice recording can be viewed by pressing the " Mode " Button and selecting the " ETC.FILE " icon.



Various types of files can be shown in the Search File windows.

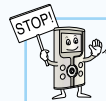
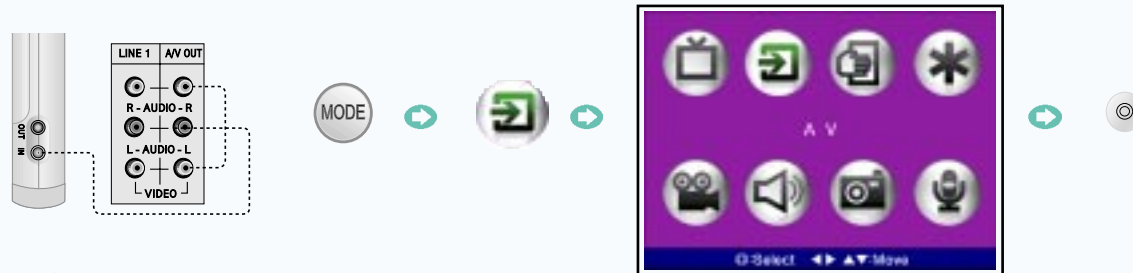
The jog button to ►► direction is pushed, You can read text file.



- ♣ The AVIAh has the capability of displaying Text (.txt) files. Just download your text files into the AVIAh and use the * ETC file button from the Main Start Up screen to access the file. Basically any document that is converted to or is originally a .txt file can be viewed.
- ♣ Highlight the Text file you would like to see and push the Joystick to the right to display the text. If the text file is long, pushing the Joystick to the right again will display the next page of the document. Pushing the Joystick to the left will display the previous page. In addition, the text will be presented with word wrap functionality.
- ♣ In order to get out of the Text File View Mode push down on the Joy stick.
- ♣ The AVIAh will also automatically recognize UTF-8/UNICODE/UNICODE-BE text files.
- ♣ However, word wrap is not supported for UTF-8/UNICODE/UNICODE-BE, Korean, Japanese or Chinese text.
- ♣ Deleting a large file may take a longer than usual period of time. On occasion, during the deletion of a file the AVIAh may appear to have paused or stopped responding. This is temporary; after the file deletion has been completed, normal operation will resume.

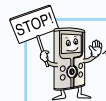
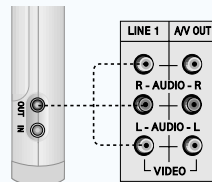
Can I connect the AVIAH to external A/V equipment?

Yes. You may connect other Video and Audio devices such as a TV receiver, DSS, or VCR to the AV IN Connector.



- ♣ Settings for external input are referred to Page 49. (When recording)
- ♣ To record while watching a program, press the REC button. To end the recording session, press the REC button again.
- ♣ The filename will vary for a recorded file depending on the external input signal.
 1. A Video signal will be saved as VID_0000.ASF. Adding another video recording will increase the file number by one. E.g. VID_00001.ASF.
 2. A TV signal, when recording via the antenna, will be saved as A0000000.ASF, whereas C0000000.ASF is for cable recordings. Additional recordings will increase the file number by one. (The 3-digit numbers immediately following the A and/or C in the file name will denote the channel that was recorded. Example: C0350002.ASF means that the recording was made from Cable Channel 35 and is the second recording.)
- ♣ You may select to record in ASF or JPG file format in the system set-up menu of the Other Function sub-menu (Page 38). If for example the REC button is pressed while watching TV and the JPG recording format is selected, a frame of the incoming signal will be captured and will be saved as a JPG file.

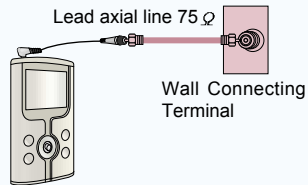
When viewing a file stored in the AVIAH on any external AV equipment (TV, monitor) (OUT)



- ♣ Be sure to use the cable supplied with this unit.
- ♣ Settings for output through the OUT terminal is referred to on Page 37
→ OLED Display, Output Color System

How do I connect the antenna and cable?

To connect cable antenna when viewing this unit.



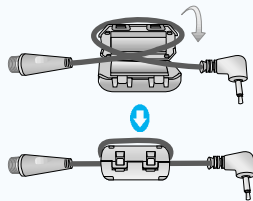
Connect TV Indoor Antenna/Cable and the RF line from the Antenna or Cable (Terminal Lead axial line 75 Ω).

To connect the telescoping antenna when viewing this unit.

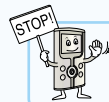


Watch TV by installing the TV outdoor antenna/telescoping antenna.

To connect the indoor antenna/cable with the Core.



Open the Core, insert the antenna wire, and close the Core.



♣ Installing a ferrite core around the indoor antenna/cable will generally remove any noise in the picture.

Are there any precautions when using the battery?

Yes. When using this unit, the current battery charge will be displayed on the screen. If the battery charge is insufficient, the battery indicator will flicker, and the power will automatically turn off in 1 or 2 minutes.



When using this unit, the current battery charge status is displayed.

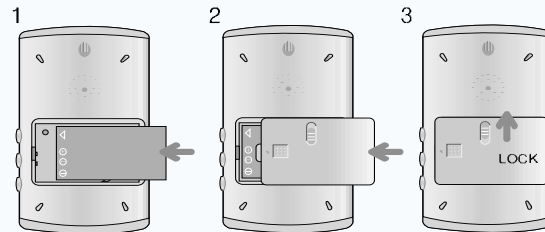


The battery is fully charged when the power cord image is displayed, when the battery and DC power are connected.

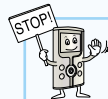
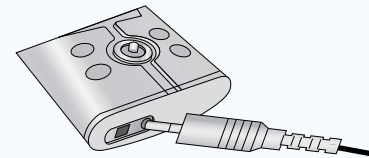
The battery recharge process may be checked by looking at the battery indicator.



- Replacing the battery.



- Charging with the AC adapter.



- ♣ When the battery indicator icon flickers, this unit may not operate at its full potential. Turn OFF the unit and replace the battery with a fully charged battery or use the AC adapter as your power source.
- ♣ If you do not plan to use the unit for a prolonged period of time, you should remove the battery from the unit as a precaution against the possibility of over discharging the battery.
- ♣ Always dispose of spent batteries properly. Never throw batteries in a fire, as they could explode.
- ♣ Always turn the unit OFF with the Sliding Switch BEFORE replacing the battery. You could damage the hard drive if you remove the battery during video or audio playback.

What are the functions of each button?

MODE Button



TV (Option) → **AV** → **RADIO** (Option) → **SYS.SETUP** → **ETC.FILE** → **VIDEO PLAY** → **AUDIO PLAY** → **SLIDE SHOW** → **VOICE REC** will be viewed in sequence.

- Depending on product options, the number of menu items displayed on the screen may vary.

DISP Button



This button displays the present status for various modes.
While playing back MP3/Voice, if you set Repeat Menu(D/R) to ON, the next track will be played back.

REC Button



TV/AV signal can be saved as a moving picture file, and/or a desired image can be captured and saved as a JPG formatted file. In **VOICE REC**, voice can be recorded via a built-in microphone.

HOLD Button



This button is used to prevent other keys from operating. It locks the keys to prevent accidental operation.

VOL +/- Button



This button adjusts the earphone volume level.



POWER Button



This button is a sliding type switch for Power ON/OFF. This switch is also used to reset the system. Just pull the switch to the ON/OFF position for approximately 10 seconds, then release. The system will reset automatically.

CH +/- Button (* Fn +/-)



While in **TV mode / Radio mode**
→ Channel Up/Down can be selected.



While in **VIDEO PLAY / AUDIO PLAY mode**
→ While in Playback Mode, Repeat Menu and Loop Repeat Function can be selected.



→ While not in Playback Mode, File Deleting Function can be selected with **CH+** Button.

* Depending on Option, "CH" can be indicated as "Fn".

PLAY/PAUSE Button



- While in **VIDEO PLAY / AUDIO PLAY mode**
→ Playback/Pause Function can be selected.
- While in **Menu mode**
→ Cursor Key (▲) is used.

REW Button

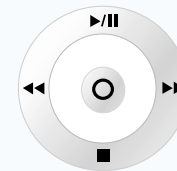


- While in **VIDEO PLAY / AUDIO PLAY mode**
→ Rewinding (x2/4/8/16) can be selected.
- While in **Menu mode**
→ Data adjusting (◀) can be done.
- While in **SYS.SETUP**
→ EXIT Key is used to exit the current menu.

FF Button



- While in **VIDEO PLAY / AUDIO PLAY mode**
→ Forwarding (x2/4/8/16) can be selected.
- After locating the cursor on a desired file, pressing (►►) Button will allow Full-screen Play Function to operate.
- While in **Menu mode**
→ Data adjusting (▶) can be done.
- While in **SYS.SETUP mode**
→ This button is used to select the sub-menu.



OK Button



- This button is used to select the Menu for various modes.
- While in **VIDEO PLAY/AUDIO PLAY/SLIDE SHOW/ VOICE REC mode**
→ You can play or preview the selected contents.
- VIDEO PLAY/AUDIO PLAY/SLIDE SHOW/ VOICE REC** playback mode.
→ Folder and file will be displayed.

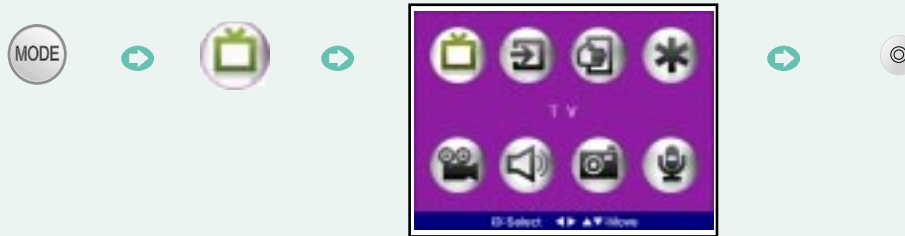
STOP Button



- While in **VIDEO PLAY / AUDIO PLAY mode**
→ This button is used to stop playback of a file.
- While in **Menu mode**
→ Cursor Key (▼) is used.

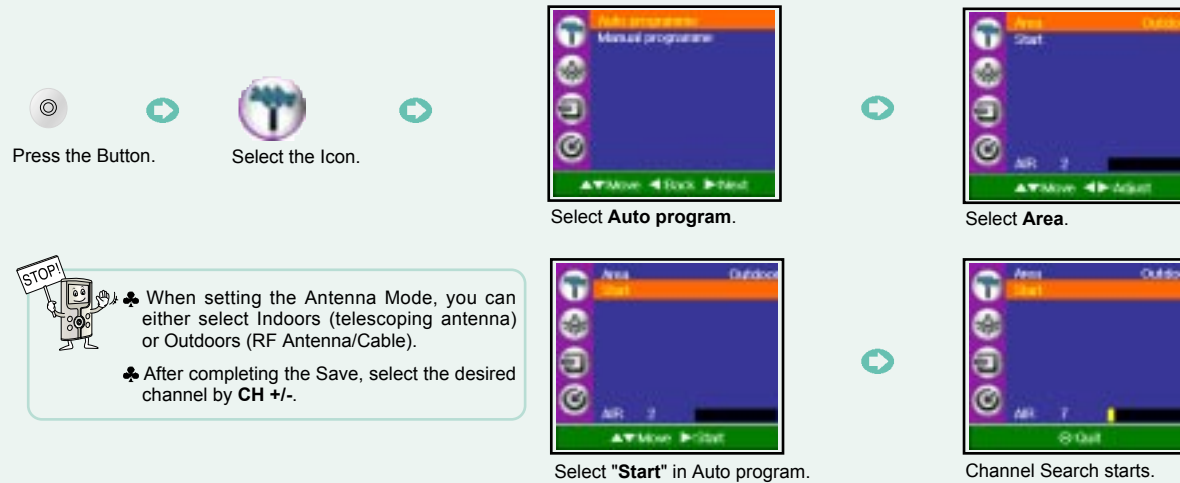
When Watching TV (NTSC System)

If you want to watch TV outdoors, use the telescoping antenna. The AVIAh reception quality will vary according to the proximity of the broadcast station. The further away you are from a broadcast station the weaker your reception will be. For watching TV indoors, connect the antenna/cable to the antenna terminal.



- Auto Channel Setup [NTSC]

This function is to search the receiving signal automatically, and save it into memory.



STOP! 🛑

- When setting the Antenna Mode, you can either select Indoors (telescoping antenna) or Outdoors (RF Antenna/Cable).
- After completing the Save, select the desired channel by CH +/-.

How to Operate each Mode

- Manual Channel Setup [NTSC]

This function allows you to delete the channel saved by the Auto program, and allows you to manually select and save the channels.



Press the Button.



Select the Icon.



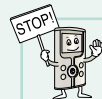
Select **Manual program**.



Select **Area**.



Adjust settings after selecting a desired mode.



♣ The antenna for the indoors setting can receive cable broadcast signals, whereas the outdoors setting can only receive public broadcasting signal.

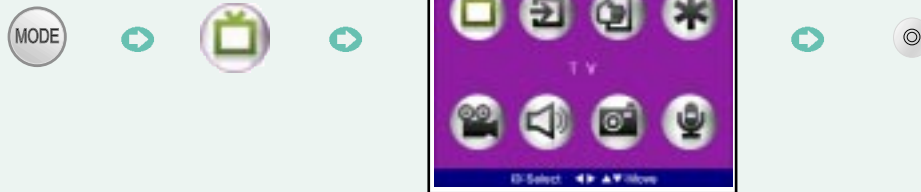
♣ While in the Area line item, select indoors or outdoors.

♣ After saving, select a desired channel by pressing **CH +/-**.

♣ To modify Indoors and Outdoors Mode while watching TV, pressing **CH +/-** Button repeatedly will display antenna modes (Indoors, Outdoors)

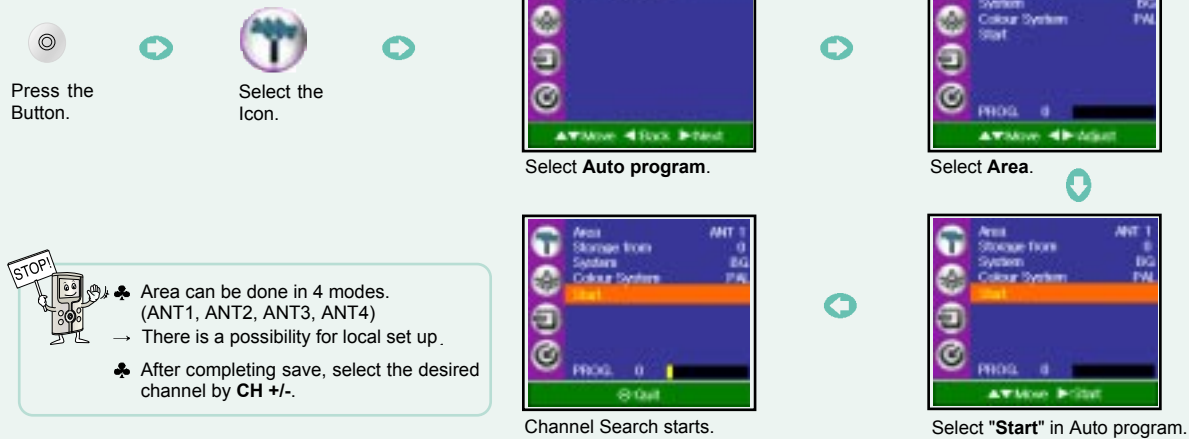
When Watching TV (PAL System)

If you want to watch TV outdoors, use the detachable telescoping antenna when there is a strong broadcast signal, and for watching TV indoors, connect the cable signal to the antenna terminal. The cable tuner can receive analog signals; it will not accept digital cable.



- Auto Channel Setup [PAL, SECAM]

This function is to search the receiving signal automatically, and save it into memory.



STOP!

- ♣ Area can be done in 4 modes. (ANT1, ANT2, ANT3, ANT4)
- There is a possibility for local set up.
- ♣ After completing save, select the desired channel by CH +/-.

How to Operate each Mode



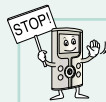
1. Use the Jog button (▶/|| or ■ direction) to select "**Storage from**".
2. Push the Jog button to ▶▶ direction or ◀◀ direction. Select the beginning program number.



1. Use the Jog button (▶/|| or ■ direction) to select "**System**".
2. Push the Jog button to ▶▶ direction or ◀◀ direction to change a TV System.
TV System modes.
 - BG : PAL B/G, SECAM B/G (Asia/New Zealand/Europe/East Europe)
 - I : PAL I/II (U.K./Ireland/Hong Kong/South Africa)
 - DK : PAL D/K, SECAM D/K (East Europe/China/Africa/Russia)



1. Use the Jog button (▶/|| or ■ direction) to select "**Color System**".
2. Push the Jog button to ▶▶ direction or ◀◀ direction to change a color System.
Color System modes.
 - PAL, SECAM, NTSC



- ♣ After setting "**Storage from**", "**System**, **Color System**" above, Select "**Start**" then Push the Jog button direction to begin the Auto Program.

- All receivable stations are stored.

- Manual Channel Setup [PAL, SECAM]

This function allows you to delete the channel saved by the Auto Program, and select the channels manually and save them.


Press the
Button.



Select the
Icon.



Select **Manual program**.



Select **Area**.



- ♣ While in Area, select ANT1, ANT2, ANT3, ANT4.
- ♣ After saving, select a desired channel by CH +/-.

How to Operate each Mode



Normally, fine tuning is only necessary if the reception is poor.

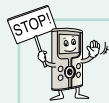
1. Use the Jog button (►/|| or ■ direction) to select "**Fine**".
2. Push the Jog button to ►►direction or ◀◀ direction to fine tune for the best picture and sound on the Fine pull-down menu.
3. Press the **OK** button.



1. Use the Jog button (►/|| or ■ direction) to select "**Search**".
2. Push the Jog button to ►►direction or ◀◀direction to commence searching on the Search pull-down menu.
If a station is found the search will stop.
3. Press the **OK** button to store it.



1. Use the Jog button (►/|| or ■ direction) to select "**Skip**".
2. Push the Jog button to ►►direction or ◀◀direction to select "**On**" or "**Off**".
3. Press the **OK** button.
4. When the Skip setting is "**On**", it means that you will be unable to find the skipped channel using the **CH+/-** button during normal TV viewing.

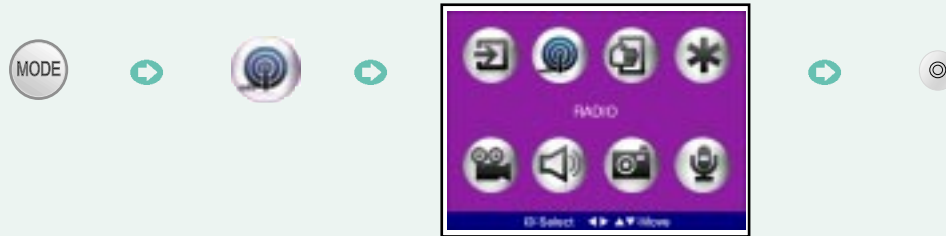


♣ After setting "**Storage from**", "**System**", "**Color System**" above; Select "**Start**" then Push the Jog button ►►direction to begin the Auto Program.

- All receivable stations will be stored.

When Listening to the Radio (Option)

If you want to listen to the Radio outdoors, use the detachable telescoping antenna where the reception sensitivity is good.



- Auto Channel Setup

This setup will search receiving signals automatically and save them to the unit's memory.

Press the Button.

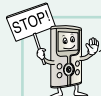
Select the Icon.

Select Auto program.

Select Area.

Select "Start" in Auto program.

Channel Search starts.

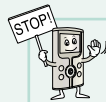
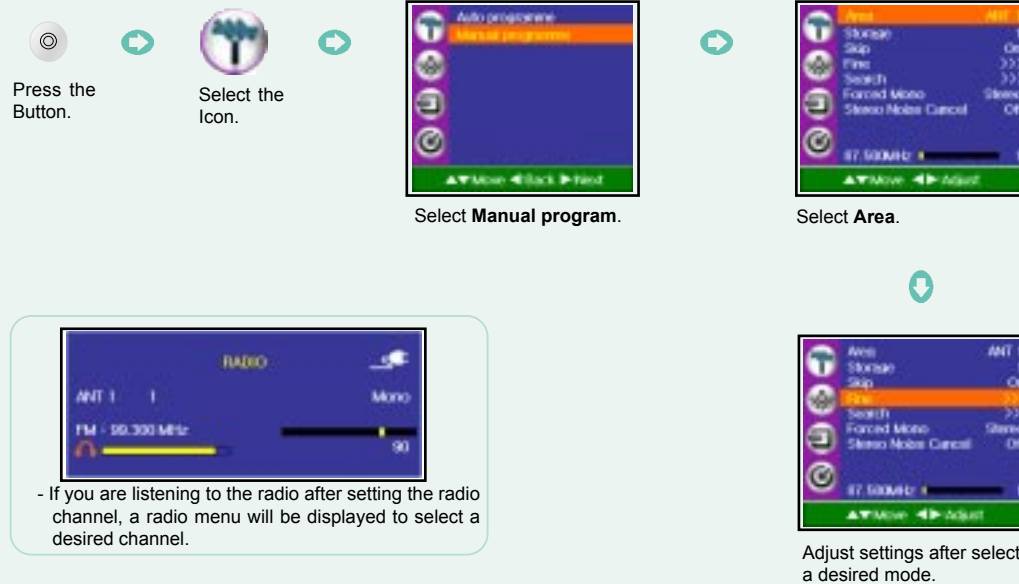


- ♣ Area can be done in 4 modes. (ANT1, ANT2, ANT3, ANT4)
→ There is a possibility for local set up.
- ♣ The System can be set as global radio system or Japanese radio system. (EU, USA, KOREA, JAPAN)
- ♣ Pushing the jog button to direction when starting Auto Channel Setup, the signal will be stored automatically.

How to Operate each Mode

- Manual Channel Setup

This method can be used to erase the channel saved by the Auto Program, or catch and save the station manually.



- ♣ Area can be done in 4 modes. (ANT1, ANT2, ANT3, ANT4).
- ♣ After saving, select a desired channel by **CH +/-**.
- ♣ When there is a serious noise in the stereo signal, setting **Forced Mono** or **Stereo Noise Cancel** will allow you to listen to a cleaner signal

When Displaying an Image File

Picture files stored in the AVIAh can be displayed individually or as part of a slide show.



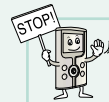
- When Viewing Image Files



After moving to a desired file, pressing the **OK** Button will allow you to preview in a small screen in the upper left side.



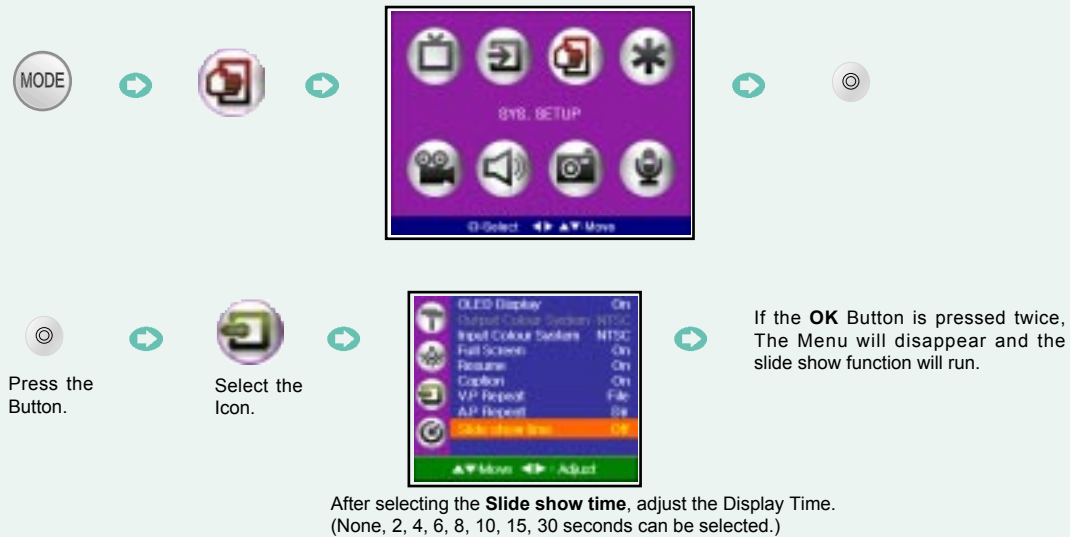
If the **OK** Button is pressed or the jog button to ►► direction is pushed, the current image file will be displayed in full screen.



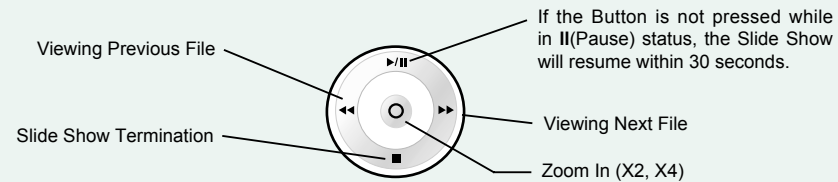
- ♣ Repeatedly pressing the **DISP** Button will provide information on the filename of the displayed image .
- ♣ When deleting an image file without previewing it first a confirmation warning question appears. If the **CH+** Button is pressed, the following warning question appears " **Do you want to delete?** " If you select " **YES** ", and you press the **OK** Button, the corresponding file will be erased.
- ♣ While displaying a picture in the Picture View Mode pressing down on the Joystick button will allow you to zoom in on the picture. You can zoom in 2X or 4X. Pushing the button once will zoom in 2X. Pushing the Joystick button again will zoom in 4X.
- ♣ While zoomed in on a picture you can also pan across the picture by using the Joystick.

How to Operate each Mode

- When Viewing an Image File with the Slide Show Function



- When Viewing a Slide Show; the Jog Button:



Can I change the Background Images of the On Screen Display?

You can download a new image of your choice in .JPG format and use it as the background for the On Screen Display.

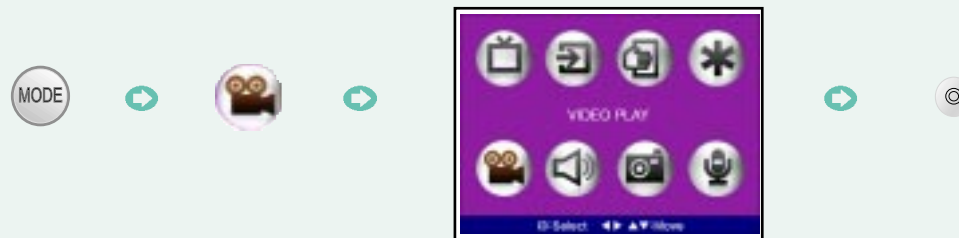
1. Save your JPG file of Choice to the SystemFolder of the Portable Media Player. At this time you can save only two .JPG files to the SystemFolder.
2. When you save them, the file names should be wall.jpg and window.jpg.
3. wall.jpg is shown as a background when you push the mode button. It is also the background shown in the main menu. window.jpg is shown as a background in Video, Audio, Slide Show, REC and ETC file mode.



♣ If you do not want to have any background images, please delete the image files in System Folder or change the file name of wall.jpg and window.jpg to some other name.

When Playing a Moving Picture File

Moving pictures stored in the AVIAH can be viewed. The AVIAH can play many different types of Moving picture files including MPEG4, DIVX, XVID, AVI, ASF and WMV9.







- Playing a Moving Picture file

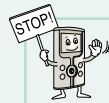


After moving to a desired file, pressing the **OK** Button will allow you to preview the file in a small screen in the upper left side.



If the **OK** Button is pressed or the jog button to **▶▶** direction is pushed, the current video will be displayed in full screen.

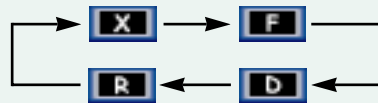
- To pause play: Push the jog button to  direction.
- To resume playback: Push the jog button to  direction.
- To setup playback speed: Push the jog button to  or  direction. (x2, x4, x8, x16, x32)



- ♣ When deleting a video file without previewing it first a confirmation warning question appears. If the **CH+** Button is pressed, the following warning question appears " **Do you want to delete?** " If you select " **YES** ", and press the **OK** Button, the corresponding file will be erased.
- ♣ Larger files take longer to delete.
- ♣ When deleting moving picture files, if there is subtitle data, by pressing REC button to select one of Korean/Chinese/Japanese/... to decode property, so if you select Japanese, you can decode the subtitle file in Japan. In case of English subtitle file, there is no need to press REC button to select one of Korean/Chinese/... format to decode.

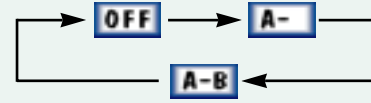
How to Operate each Mode

- When Pressing the CH+ (*Fn+) Button While Playing a Moving Picture File



X	The file being played runs once, then stops.
F	The file being played will be repeated.
D	All the files in the folder will be played repeatedly.
R	Files to be played will be selected randomly and played.

- When Pressing the CH- (*Fn-) Button While Playing a Moving Picture File



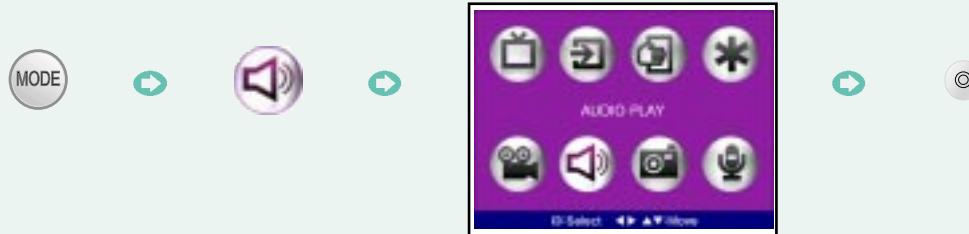
OFF	Loop Repeat Function is not used.
A-	Pressing CH- Button while a moving picture file is being played will setup the beginning of a Loop Repeat.
A-B	After the above A- icon is displayed, if you want to setup the end of a Loop Repeat, press CH- Button once more, then the specified loop will be played back repeatedly.



- ♣ Depending on the type of moving picture files, the above Loop Repeat Function may not be available.
- ♣ While playing a Video file, pressing down on the Joystick button will allow you to zoom in on the Video. You can zoom in 2X or 4X. Pushing the button once will zoom in 2X. Pushing the Joystick button again will zoom in 4X.
- ♣ While zoomed in on the Video you can also pan across it by using the Joystick.
- ♣ Push Joystick button to ▶/|| while the video is playing back to pause the moving picture. When you push the Joystick button to ▶▶, you can advance the video frame by frame.

When Playing Audio Files

You can enjoy music files stored in the AVIAh.



- Playing an Audio File (MP3 or WMA9 files)



Push the jog button to the direction.



As an audio file is played, information on the selected audio file will appear in the upper part of the screen.



To play an audio file, highlight the desired file.



Press **OK** Button.

Will be played back while Directory Menu is displayed.

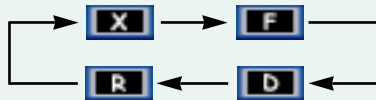
How to Operate each Mode

- To pause play: Push the jog button to the  direction.
- To resume playback: Push the jog button to the  direction.



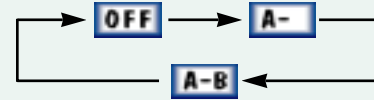
- ♣ When deleting a music file without previewing it first a confirmation warning question appears. If the **CH+** Button is pressed, the following warning question appears " **Do you want to delete?** ". If you select " **YES** ", and press the **OK** Button, the corresponding file will be erased.
- ♣ In the case of an MP3 file : If the **OK** Button is pressed during playback, another audio file can be selected without stopping the music being played.
- ♣ In the case of a WMA9 file : During play back, another audio file can not be selected.
- ♣ While in the System Setup menu find the OLED Display On/Off menu item. Activating the OLED "Off" menu item will turn off the OLED the next time you activate an audio file for playback. The OLED will continue to stay turned off even if you push the Volume Up/Down or Display buttons. This allows you to play and navigate through audio files without using the OLED screen thus, conserving battery life.
 - Note 1: The Volume up/down buttons will continue to function normally.
 - Note 2: Pushing the Display button will allow you to skip through audio files without activating the OLED screen.
- ♣ In addition, as an alternative method, you can force the OLED to turn off by pushing and holding the Display Button for 5 seconds. This will temporarily disable the OLED screen. When you push any button the OLED screen will turn on again.

- When Pressing the CH+ (*Fn+) Button While Playing an Audio File



X	The file being played runs once, then stops.
F	The file being played will be repeated.
D	All the files in the folder will be played repeatedly.
R	Files to be played will be selected randomly and played.

- When Pressing the CH- (*Fn-) Button While Playing an Audio File



OFF	Loop Repeat Function is not used.
A-	Pressing CH- Button while Audio file is played will setup the beginning of a Loop Repeat.
A-B	After the above A- icon is displayed, if you want to setup the end of a Loop Repeat, press CH- Button once more, then the specified loop will be played back repeatedly.



- ♣ Depending on audio content, the above Loop Repeat Function may not be available.
- ♣ If there are audio file A.mp3, and A.txt file in the same folder together, lyrics of the song can be displayed by using OK button after audio file playback. In this mode, FF/RW button can be used for page Up/Down function. If you repress OK button, Audio playback mode will be shown on screen.
- ♣ By pressing REC button to select one of Korean/Chinese/Japanese/... to decode properly, ID3 information of MP3 in China also can be decoded in Chinese properly. In case of English ID3 information, there is no need to press REC button to select one of Korean/Chinese/Japanese/... format to decode.

Does the Portable Media Player have an Audio Equalizer?



1. This Portable Media Players features an automatic/selectable equalizer that allows you to set the EQ according to the Genre of the music file. In the Automatic mode the EQ is automatically set by the Genre information contained in the ID3 information of the music file. Example: If the Genre of a music file is "Rock" the Player will automatically select the "Rock" EQ.



2. While a music file is playing you can also select the EQ manually. As the file is playing push the REC button and the EQ selection will be displayed. Pushing the REC button repeatedly will cycle through the following EQ List: Off–Auto–Rock–Rap–Grunge–Metal–Dance–Techno–Country–Jazz–Acoustic–Folk–NewAge–Classic–Blues–Reggae–Opera–Swing–Voice–Ultra Bass
3. The EQ cannot be accessed while in the ID3 View Mode

4. You can also select the EQ while in the Playlist Mode by pushing the REC button as described previously.

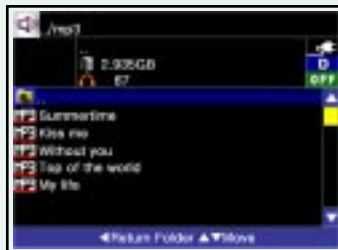
Can I create Playlists?

1. The AVIAh allows you to create playlists in two different ways. A playlist can be created internally on the unit, or by using Windows Media Player.
2. Playlists can be created using mixed file formats. You can create a playlist that incorporates Video, Audio as well as Picture files. A maximum of 500 files can be added to the the playlist.



3. What is the procedure for creating a playlist internally on the player?

- a. Highlight an Audio, Video or Picture file and push the CHANNEL- button.
- b. A " Do you want to add?" message will appear. Select "Yes" with the joystick and the file will be added to the playlist.
- c. Once the files are added the player will enter the playlist mode and display all the files contained in the playlist
- d. To exit the playlist push the joystick to the left
- e. To add another file to the playlist, repeat the above procedure.



4. Can I add more than one file at a time?

- a. Yes, it is possible to add more than one file at a time. Please follow the procedure outlined below.
 1. Access the folder containing the files you would like to add.
 2. Highlight the folder (Folder with the return arrow pictured on it) located at the top of the file list and push the CHANNEL – button.
 - i. A " Do you want to add?" message will appear. Select "Yes" with the joystick and the files in the folder will be added to the playlist.
 - ii. Once the files are added the player will enter the playlist mode and display all the files contained in the playlist
 - iii. To exit the playlist push the joystick to the left
 - iv. To add another set of files to the playlist repeat the above procedure.

5. How do I access the playlist?

- a. Highlight any folder (Except for the return folder) and push the CHANNEL- button. The playlist will be displayed.

6. How do I delete files from the playlist?

- Enter the Playlist Mode as described above
- Highlight the file that you would like to delete from the playlist and push the CHANNEL + button.
- A " Do you want to delete?" message will be displayed. Selecting "Yes" will remove the selected file from the playlist.
- Removing a file from the playlist does not delete it from the Hard Drive.



7. How do I save the Playlist?

- After you add the first file to the playlist a PLAYLIST.WPL file is automatically created in the root directory of the Hard Drive.
- Any subsequent file additions will be automatically added to the PLAYLIST.WPL file.

8. How do I delete a playlist?

- From the main menu screen select the * (ETC File View Menu)
- You will see the PLAYLIST.WPL file in the root menu
- Highlight the PLAYLIST.WPL file and push the CHANNEL+ button
- A " Do you want to delete?" message will appear. Select "YES" to delete the playlist file.

9. How do I play the files in my Playlist?

- Enter the Playlist mode by highlighting a folder and pushing the CHANNEL – button
- Highlight a file from the playlist and push the Joystick to the right. The file will begin to play.
 - While playing a file if you push the DISPLAY button the next file in the list will begin to play. Push the Display button again to get to the next file and so on.
 - If you move the Joystick to the left the selected file will stop playing.

10. How do I get out of the Playlist mode?

- While in the Playlist push the joystick to the left.

11. Can I make a Playlist by using Windows Media Player?

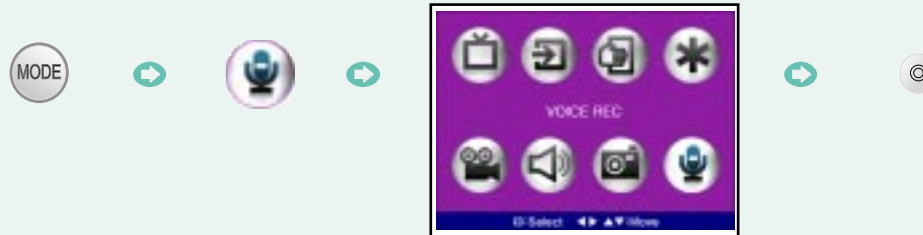
- a. You can use Windows Media Player to view and play the playlist that you created on the Portable Media Player. Also, you can create a playlist in Windows Media Player and save it to the portable media player.
- b. Connect the Portable Media Player to your PC via USB
- c. From Windows Media Player go to File>Open and select the PLAYLIST.WPL file from the root directory of the Portable Media Player. The playlist that you created in the Portable Media Player will be displayed. Now you can activate the playlist from Windows Media Player. The files will be played in sequence according to the playlist.
- d. You can also create a playlist in Windows Media Player and save it to the Portable Media Player.
 - 1) Create your playlist in Windows Media Player
 - 2) Select Playlist> Save as and save the file into the root directory of the portable Media Player. Name the file PLAYLIST.WPL
 - 3) The .WPL file is saved as a windows text file which the Portable Media player is not able to read at this time. You will need to open the file in Windows Notepad and re-save it as a UNICODE file. Once this is done the Portable media player will be able to read the playlist.
 - 4) If you created a playlist that contains a reference to files not contained on the Portable Media Player Hard Drive a playlist error will occur. Add the referenced files to the Hard Drive of the Portable Media Player.



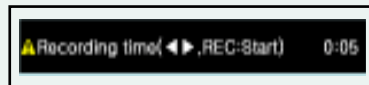
- ♣ While in the * ETC file view Mode if you erase the PLAYLIST.WPL file from the root directory the playlist will be deleted.
- ♣ In Playlist mode, only playback of the added files is available. Playback of files from the Playlist Mode does not support RW/FF, Section repeat, ID3 view, and song text view.
- ♣ You can add up to 500 files to the playlist. If you add more than 500 files the player will only read up to the 500th file and then go back to the first item in the list. It will ignore all files after the 500th file.

When Recording Voice

The AVIAh can be used as a voice recorder.



While in the Voice Record Mode pressing the REC button will start the voice recording process, automatically create a file and will automatically save the file in the RecordFolder/Audio.



After pushing the REC button a "Recording Time" message will appear. Use the Joystick to set the length of your recording. The recording length can be set in 5 minute increments; from a minimum of 5 minutes to a maximum of 24 hours. Once the Portable Media Player reaches the end of the allotted recording time it will automatically stop recording.
-In the "Recording Time" window if you select - - : - - , the Portable Media Player will continue to record without any time limit.



Continues in the next page.



After pushing the REC button a "Please wait a moment" message will appear as the Portable Media Recorder prepares to record. A " Now Recording" message will appear once the recording process begins.

To stop recording push the REC button again.

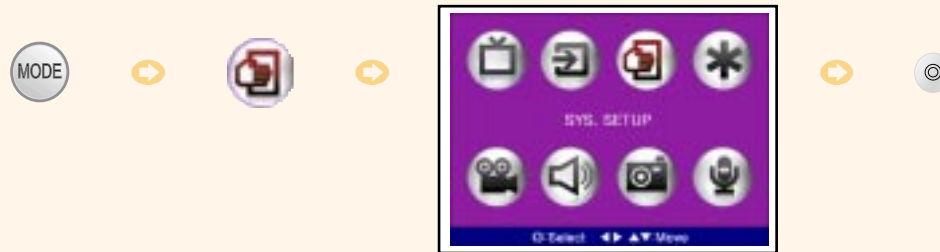
-While recording if you push the Joystick up you can PAUSE the recording process. Pushing the Joystick up again will resume recording.



- ♣ The filename will be saved as VOICE_0000.REC. If a second etc. recording is made by pressing the **REC** Button, the file number increases by one. E.g. VOICE_0001.REC, VOICE_0002.REC, ...and so on.
- ♣ In the case of the REC in RADIO mode, the filename to be saved will be RADIO_0000.REC, RADIO_0001.REC,...and so on.

How to perform System Set Up

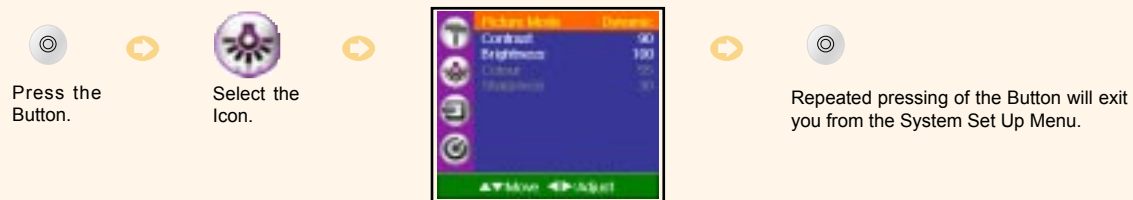
You can customize the AVIAh environment and functionality.



Picture Adjustment

After selecting the Picture Adjustment Icon, you can adjust the Picture Mode, Contrast, Brightness, Color, Sharpness and Tint (NTSC AV only) to the levels you prefer.

- While Playing Contents File in Radio Mode



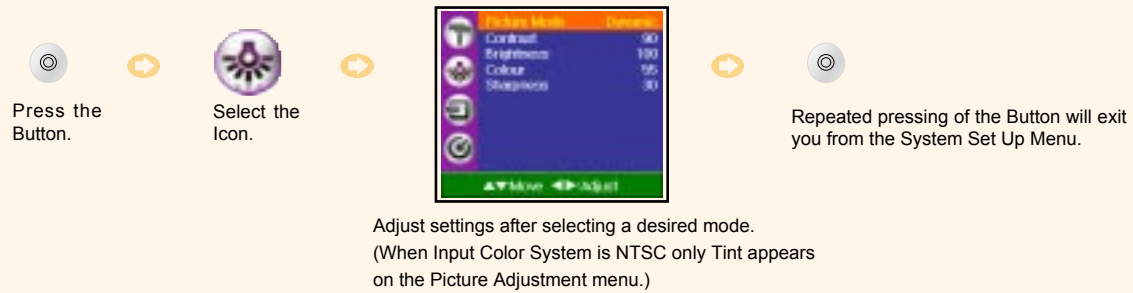
Press the Button.

Select the Icon.

Repeated pressing of the Button will exit you from the System Set Up Menu.

Adjust your settings after selecting a desired mode.
(Color and Sharpness levels cannot be changed)

- While Watching TV/AV



- ♣ When adjusting images, the quick Image Adjusting Menu will be displayed, so you can view the changes being made to the current image. At this time, if you move the jog button to ►/|| or ◼ direction, other image items can be selected. When the **OK** Button is pressed, you will go back to the Image Adjusting Mode.
- ♣ While in **Picture Mode**, you can select one of four choices : **Dynamic, Standard, Mild, User**.

How to perform System Set Up

System Setup

After selecting the System Set Up Icon, you can set-up a specific feature.



Adjust settings after selecting a desired mode.

OLED Display	This function is for turning the OLED Display ON/OFF. After selecting OFF, if the external device (TV, Monitor) is connected to the AV OUT, you can enjoy your image and sound on a bigger display.
Output Color System	This function is for changing the Output Color System (NTSC,PAL,SECAM)
Input Color System	This function is for changing the Input Color System (NTSC,PAL,SECAM) in AV mode (When the Color System is PAL/SECAM, only the Input Color System item appears on the system set-up menu.)
Full Screen	This function allows for full screen display.
Resume	This function will make the unit remember the position where the video/audio was stopped.
Caption	This function activates/deactivates subtitling on moving picture files. The subtitle file should be in the same folder together with the moving picture file. ("same file name.smi" or "file name.sami")
V.P/A.P Repeat	This mode allows Repeat Menu Setting of video/audio content. Off : Returns to the Menu after playing the current file. File : Repeats playing the current file. Dir : Plays all files in the folder in sequence. Rand : Plays files in random order
Slide show time	Sets the display time of image file (*.jpg)

Setting Other Functions

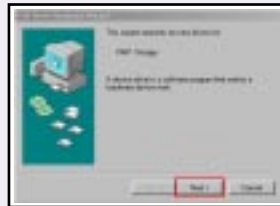
After selecting the Set-Up Icon, you can adjust set-up values.



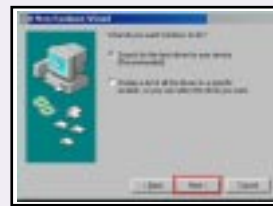
Language	Sets the language displayed on the screen.
File format	Formats the file to be recorded. - ASF : mode for recording moving picture. - JPG : mode for recording still picture.
REC. Mode	Selects the Quality of the moving picture recording. Economic → Normal → Fine
OLED Power save	When no button is pressed within a specified time, the OLED screen will turn off. - 10, 20, 30, 40, 50, 60 seconds.
HDD Power Management	You can select ON/OFF When selecting "ON", the power consumption for HDD is economized. The system response will be slower then if the HDD power management is set to OFF.
Auto sleep	In the TV/Video mode, when 3 minutes elapses without signal reception, the power will turn off automatically.
Sleep timer	Automatically turns power off after a fixed time. Time range can be set from 10 to 240 minutes (None, 10, 20, 30, 60, 90, 120, 180, 240).
Firmware Upgrade	Allows firmware upgrade by downloading the new version firmware from the Internet. Before upgrading, be sure to check if the USB is connected and the battery charge is sufficient.

Installing Windows 98SE/ME Driver

When you connect the AVIAh to a Windows 98SE computer, it recognizes the AVIAh as hardware, and asks for a driver installation. At that point, insert the supplied installation CD into CD-ROM drive.



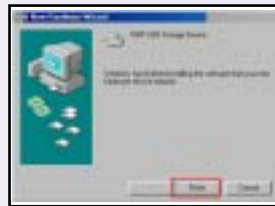
1. Press the **Next** button.



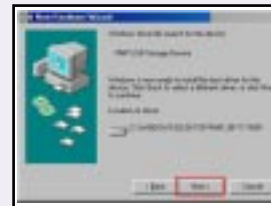
2. Press the **Next** button.



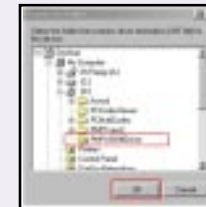
3. Input the path or search for a desired folder directly.



5. Press the **FINISH** Button.



4. Press the **Next** button.

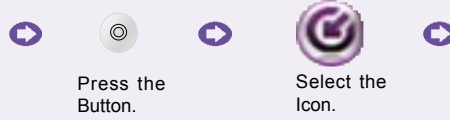


Upgrading Firmware

After copying the **firmware** file into the System Folder from "**www.aviah.com**" or "**www.ovidion.com**", change the file name to "**system.rom**", and proceed as follows.



Connect the PC and this unit with the USB cable, then download the firmware file to the "**System Folder**".



Press the Button.

Select the Icon.



Select the **Firmware Upgrade Mode**.

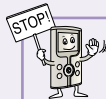


After rebooting the system the firmware updating procedure will be complete.



Press the jog button to the ►► direction.

Press the jog button to the ►► direction.

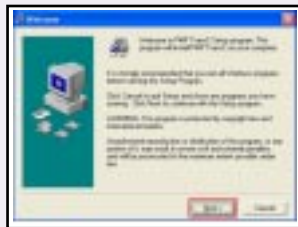


- ♣ The downloaded firmware file should be saved in the "**System Folder**".
- ♣ If there is no firmware upgrade file, the following screen will appear. Connect the USB and download the filename into "**System Folder**", then start upgrading.
- ♣ Please do not change the name of the "SystemFolder" located on the Portable Media Player's Hard Disk. The Portable Media Player expects to find all system related files in this folder. Changing the name of his folder or deleting it will cause the Player to stop working. Treat the SystemFolder with respect and your player will work great for years to come.

Installing TransC Software on your PC

When the moving picture has Codec or a resolution not supported in the AVIAh, you can transcode the file by using the TransC Software located on the Installation CD.

Click the TransC icon on the installation CD to begin installation



1. Press the **Next** button.



2. Press the **Next** button.



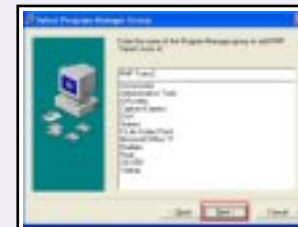
3. Designate where you would like the program to be installed.



6. Press the **Finish** Button.



5. Program Installation is carried out.



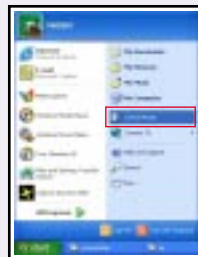
4. Press the **Next** button.

Using AVIAh TransC

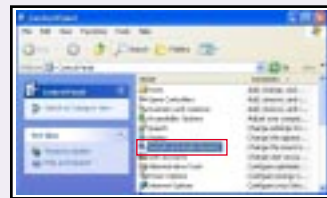
* AVIAh supports the following Codecs

Kinds of File	Video Codec	Audio Codec	Resolution
AVI	XviD, DIVX	G.726 MP3 PCM	720*480
WMV	WMV9 SP (Simple Profile)	WMV9	352*240
ASF	MS ISO MPEG-4	G.726 MP3 PCM	720*480

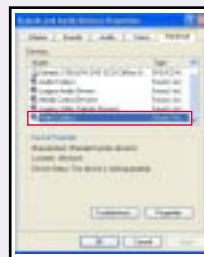
* When Checking Codecs (Audio/Video) stored in PC



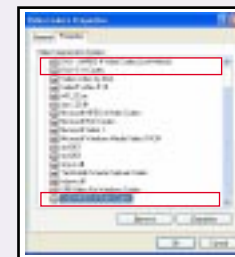
1. Select **Control Panel**



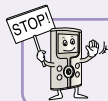
2. Select **Sound and Audio Devices**.



3. Select **Hardware**, and press **Video Codec**.




4. You can view **Video Codec** and **Audio Codec** installed in PC from the list.



♣ If XviD Codec is not in the list, download the Integrated Codec from Internet, and install in your PC.

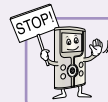
*** If you are not sure about whether the moving picture file is supported in AVIAh**

You can check compatibility with the Codec Information Check Program.

Execute the Codec Information Check Program. 

- Moving picture with **box** mark : File supported in AVIAh
- Moving picture with **X** mark : File not supported in AVIAh

Filename	V. codec name	A.1 codec name	V. fourCC	V. resol.	V. freq.	A.1 samp.	F.
Windows Media Video 9	Windows Media Audio 9	WMV3	320 * 240	10.72 fps	9172800	wm	
Windows Media Video 9	Windows Media Audio 9	WMV3	480 * 360	9.700 fps	2646000	wm	
Windows Media Video 9	Windows Media Audio 9	WMV3	480 * 360	9.700 fps	2646000	wm	
Windows Media Video 9	Windows Media Audio 9	WMV3	480 * 360	10.153 fps	1664000	AS	
Windows Media Video 8	Windows Media Audio 9	WMV2	352 * 240	10.90 fps	67340700	AS	
Windows Media Video 7	Windows Media Audio 9	WMV1	320 * 240	10.27 fps	3952000	AS	
ISO MPEG-4 VIDEO, V1	G.728	MP4S	720 * 288	38.970 fps	1640000	AS	
Novia Contents	XviD Mpeg-4	AC3, AC3, DTS, DTS, DTS	XviD	656 * 320	25 fps	210047040	AV
DvdNetworks Disc v5	Lame MP3	PCM	D=50	656 * 320	25 fps	56643526	AV
DvdNetworks Disc v5	PCM	PCM	D=50	480 * 576	25 fps	119282680	AV
DvdNetworks Disc v5	PCM	PCM	D=50	480 * 576	25 fps	99407336	AV
DvdNetworks Disc v5	Mpeg3-audio-Laplt	D=50	640 * 360	25 fps	37166720	AV	
DvdNetworks Disc v5	Lame MP3	D=50	640 * 360	25 fps	99523482	AV	
DvdNetworks Disc v5	Mpeg3-audio-Laplt	D=50	640 * 360	25 fps	106948800	AV	
DvdNetworks Disc v5	Lame MP3	D=50	640 * 360	25 fps	61104162	AV	



♣ Although you may have Codec not supported by AVIAh, if you encode it in your PC with the TransC software, it can be played. Download the Codec Viewer from the Internet, then install it in your PC.

*** AVIAh TransC Conversion Program**

VCD/MPEG/AVI/WMV/ASF Conversion Function
dat, mpeg, mpg, avi, wmv, asf ... AVI, XviD format, WMV format, MP4 format.

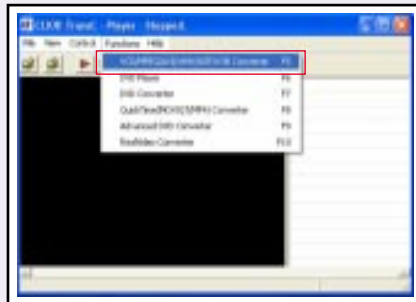
RealVideo Conversion Function
rm, rv, rmvb ... AVI, XviD format, WMV format, MP4 format.

QuickTime Conversion Function
mov, qt, mp4 ... AVI, XviD format, WMV format, MP4 format.

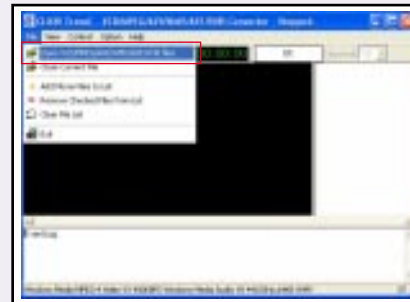
DVD Conversion Function
ifo, vob ... AVI, XviD format, WMV format, MP4 format.

*** When playing moving pictures being not supported in AVIAh**

When running AVIAh TransC, the following will be displayed in the screen.



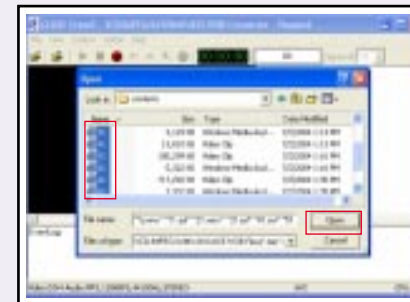
1. Select "VCD/MPEG/AVI/WMV/ASF converter".



2. Select "Open VCD/MPEG/AVI/WMV/ASF/VOB files".



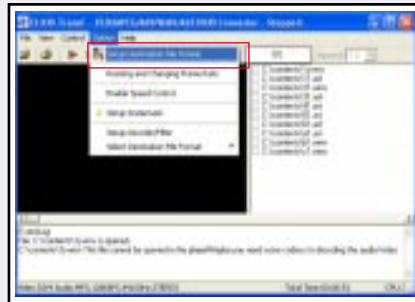
4. Select "AVI Format".



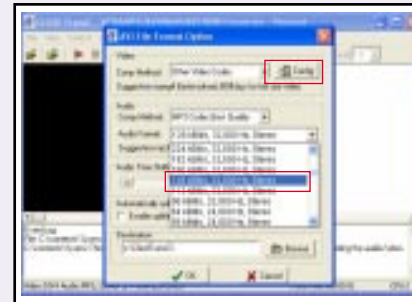
3. Open "Moving Pictures not supported in AVIAh".

Continues in the next page.

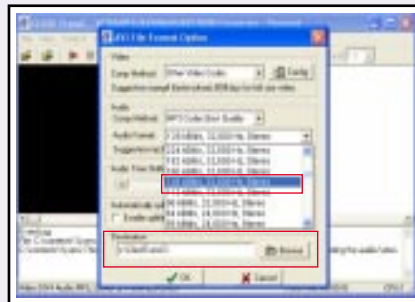
Other Functions



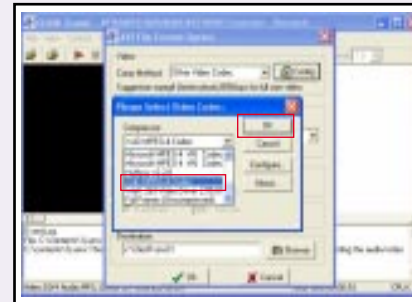
5. Select " **Setup Destination File Format** ".



6. Select " **Other Video Codec** ", and press " **Config** ".



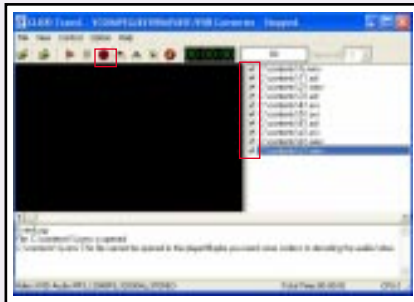
8. Select the " **MP3 Codec** ", then the Audio Bitrate Mode, Sampling, Audio Mode. (e.g., 128kBit/s, 32,000 Hz, stereo) After selecting, specify in the " **Browse** " menu the location where you would like to save the file.



7. Select the " **XviD** ".



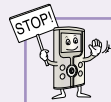
Continues in the next page.



9. After selecting the file(s) to be transcoded push the red Icon Command Button (Ctrl + C).

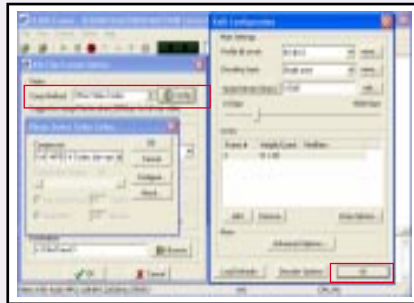


10. You can view the transformation process on the upper screen.



- ♣ When the Codec installed onto your PC causes a problem, only a portion of the file can be transformed. Please install a stable and well-recognized Codec onto your PC.
- ♣ To change file formats such as RealVideo Converter (rm, rv, rmvb) or Quick Time Converter (mov, qt, mp4), be sure to install RealVideo, Quick Time Codec onto your PC. You can download additional Codecs from the Internet.

Other Functions



- ♣ If the transcoded moving picture quality is not acceptable, click the "Configure" command button after video codec selection and set the bitrate(kbps) higher than normal and start encoding. This will allow for better quality moving pictures.



- ♣ If the transcoded moving picture quality is not acceptable, set the resolution higher than normal, which will allow for better quality moving pictures.

Note: Resolution may differ according to Codec, so if you encode higher than the compatible resolution, it will not run in AVIAh (e.g., in the case of Xvid, resolution should not be higher than 720x480.)

Product Specifications & Features

Hard Disc	1 inch Hard Disk 5.0GB
Screen (Panel)	OLED Color AM 2.2" / 16,700K Colors / Pixel Format : 521*218 Viewing Angle : Free / Response Time : 5ms
Slide Show	JPEG (irrespective of image size)
Moving Picture Playback	MP4 MPEG-4 SP@ML Compliant Video Codec ASF(Microsoft ISO MPEG4) : Supports up to Max. Resolution 720*480 AVI(DivX,XviD etc) : Supports up to Max. Resolution 720*480 WMV9 : Supports up to Max. Resolution CIF(352*288)
Video Recording	Supports Resolution 352*240 (288) : 3 Screen Resolution Modes (Fine, Normal, Economic) Video Capture (JPEG Encode)
PC Interface	High Speed USB 2.0 (Compatible with USB 1.1)
Audio Playback	MPEG-1 Layer 3 Audio Decode / WMA9 Level 2A Audio Decode
TV(Television)	NTSC System or PAL/SECAM System
AV(External Input)	AV Composite Video/Audio LR-in/out
Firmware Update	www.ovideon.com
Voice Recording	G.726 Compliant Voice Codec
Power	5V, 2A DC Adapter, 3.7V 1100mAh Li-ion Battery (x2)
Product Dimensions	69(W) x 119(H) x 20(D) mm / 145g
OSD	Menu English, Spanish, French, Italian, Russian, Korean, Chinese, Japanese
System Environment	Windows 98SE/ME/2000/XP

To ask for our service through the Internet

If any problem persists, consult your AVIAh dealer or contact support at www.ovideon.com

- * Find information on our company, products, and customer and technical support.
- * Update your AVIAh Firmware.
- * Consult the product Q&A
- * Register your AVIAh product online so that our Customer Service Center is able to provide support as efficiently as possible.

Notices

The following cases will not be covered by In Warranty Service.

1. Defects or damage caused by accident, misuse, abuse, neglect, fire, flood, lightning or other acts of nature.
2. Damage caused during shipment or handling.
3. If you drop or hit the unit. (This unit has a built-in one inch hard drive, any physical impact on the unit may cause malfunction.)
4. Repair or attempted repair by anyone not authorized by Ovideon.
5. Products with altered or removed serial numbers.
6. Products purchased in "as is" condition.
7. Improper operation, improper connection to peripherals, improper electrical connections, power surges or not following the user's manual.

FCC Information

This device complies with part 15 of the FCC Rules. Operation is subject to the following two conditions: 1) This device may not cause harmful interference, and 2) this device must accept any interference received, including interference that may cause undesired operation.

This equipment has been tested and found to comply with the limits for a Class B digital device, pursuant to part 15 of the Federal Communications Commission rules and regulations. These limits are designed to provide reasonable protection against radio and television interference in a residential installation. This device uses and generates radio frequency energy and if not installed and used in accordance with the instructions can cause interference with radio communications. However, there is no guarantee that interference will not occur in a particular installation.

If this equipment does cause harmful interference to radio or television reception, which can be determined by turning the equipment off and on, the user is encouraged to try to correct the interference by one or more of the following measures:

- Reorient or relocate the receiving antenna.
- Increase the separation between the equipment and the receiver.
- Connect the equipment into an outlet on a circuit different from that to which the receiver is connected.
- Consult the dealer or an experienced radio/TV technician for help.

Declaration of Conformity

We, Ovideon, Inc., P.O. Box 9219, Aurora, IL 60598, U.S.A. declares under our sole responsibility that the AVIAh 1000 Portable Multimedia Recorder/Player/TV has been tested and found to comply with the limits for a Class B digital device, pursuant to part 15 of the FCC Rules.

This device complies with part 15 of the FCC Rules. Operation is subject to the following two conditions: 1) This device may not cause harmful interference, and 2) this device must accept any interference received, including interference that may cause undesired operation.

Warning

Any changes or modifications to the unit, not expressly approved by Ovideon, Inc. could void the user's authority to operate the equipment.

Trouble Shooting

Q : The picture on the display screen stops, turns off or des not work?

A : Connect the AC Adaptor to the AVIAh; normal operation should resume. Please recharge the battery.

Q : I connected the AVIAh to my computer via the USB but my computer does not recognize it?

A : Verify which operating system is on your computer. If you are using Windows 98 (SE) then insert the Windows 98 (SE) CD and install the USB drivers.

Q : I cannot hear any sound coming from the AVIAh?

A : First, the AVIAh does not have built in speakers, so you are out of luck there. Second, check that the volume level is sufficient for listening through the earphones. You did plug in the earphones in the correct slot...didn't you?

Q : I push the buttons on the AVIAh and nothing happens?

A : Check if the sliding power switch is in the HOLD position. If it is, slide it out of the HOLD position to restore functionality to all the buttons. The HOLD feature is used to disable the buttons in order to avoid accidental usage.

Q : The picture is too bright or too dark?

A : Adjust the picture controls found in the SET UP menu. There are some presets available for you to use but if you choose you can make adjustments to your liking too.

PRODUCT WARRANTY

Product Name		Model	
Purchase Date	Year	Month	Date
Customer	Tel.		Address
Location of Purchase	Tel.		Address
Warranty Period	Two year from the date of purchase (OLED: One Year)		

- * When requesting repair, for warranty service please present this warranty with the date of purchase recorded.
- * During the warranty period we will repair any defect in material occurred under normal conditions free of charge, labor included.
- * When warranty period has elapsed, or even during warranty period, we may charge for our repair service if it is justified to do so.

Ovideon, Inc. (hereinafter referred as Ovideon) hereby warrants all Ovideon products sold by Ovideon or by Ovideon authorized distributors, resellers and retailers to be free from defects in material and workmanship in accordance with the following terms and conditions.

Length of Warranty

From the date of original purchase this product is warranted for a period of (2) years on parts and labor and (1) year on the OLED panel. This warranty may be enforced only by the original purchaser of the product. A sales receipt, invoice or other proof of purchase must be presented within the warranty period in order to obtain warranty service. Upon expiration of this warranty the expense of product repair becomes the responsibility of the purchaser. This warranty is valid only for products purchased and used in the United States of America and Canada.

Obtaining Warranty Service

To obtain service on your product, take the defective product to an authorized Ovideon service center or ship it freight prepaid to said service center. If shipping the product please use the original packaging of the product or equivalent. Ovideon will not be responsible for damages due to improper packaging. **For information on the location of an authorized Ovideon Service Center please call 630-236-9917**

Terms of Warranty

This warranty covers all defects in material and workmanship in this product except as specified below.

1. Defects or damage caused by accident, misuse, abuse, neglect, fire, flood, lightning or other acts of nature.
2. Damage caused during shipment or handling.
3. Repair or attempted repair by anyone not authorized by Ovideon.
4. Products with altered or removed serial numbers.
5. Products purchased in "as is" condition.
6. Improper operation, improper connection to peripherals, improper electrical connections, power surges or not following the user's manual.

Responsibility

Ovideon will pay for labor and materials during the length of warranty for a period of two (2) years from the original date of purchase. Ovideon will repair the defective product with new or refurbished parts or, at our option, replace the defective product. Ovideon will not pay for the following:

1. Removal or installation of Ovideon products.
2. Cost of Initial set up.
3. Payment of shipping charges.

Implied Warranties

All Implied warranties, including warranties of merchantability and fitness for a particular purpose, are limited in duration to the length of this warranty.

Exclusions to Warranty

Ovideon's liability for any defective product is limited to the repair or, at Ovideon's option, replacement of the product. Ovideon shall not be liable for:

1. Damage to other property caused by any defects in this product, damage based on inconvenience, loss of time or commercial loss.
2. Any other damages whether incidental, consequential or otherwise.

State Law and this Warranty

Some states do not allow the exclusion or limitation of incidental or consequential damages and /or the limitation of how long an implied warranty may last so the above limitations and exclusions may not apply to you. This warranty gives you specific legal rights, and you may also have other rights which may vary from state to state.

Note

66

Note

67

Free Manuals Download Website

<http://myh66.com>

<http://usermanuals.us>

<http://www.somanuals.com>

<http://www.4manuals.cc>

<http://www.manual-lib.com>

<http://www.404manual.com>

<http://www.luxmanual.com>

<http://aubethermostatmanual.com>

Golf course search by state

<http://golfingnear.com>

Email search by domain

<http://emailbydomain.com>

Auto manuals search

<http://auto.somanuals.com>

TV manuals search

<http://tv.somanuals.com>