

# Specifications

**WORKIO**

**Panasonic**  
ideas for life

digital imaging systems

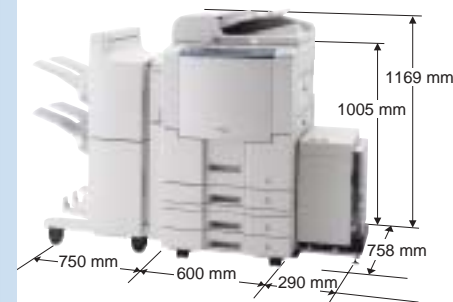
DP-6030

## DP-6030 Specifications

General	
Type	Semi Console
Copy/Print Process	Laser Indirect Electrostatic
Developing Process	Dry Dual Component
Automatic Document Feeder Capacity	70 sheets (A4, 75 g/m <sup>2</sup> )
Paper Feed	Std. 1,550 (Large-capacity tray) + 550-sheet paper tray unit + 50-sheet bypass Max. 6,250 sheets (75 g/m <sup>2</sup> ) with option
Paper Weight	Paper Tray: 60 to 90 g/m <sup>2</sup> Bypass: 55 to 133 g/m <sup>2</sup>
Power Requirements	AC 220 V-240 V, 50/60 Hz, 6.5 A
Power Consumption	Max.: Less than 1.5 kW Power saver mode: Approx. 180 W Sleep mode: Approx. 20 W
Warm-up Time (20 °C)	Approx. 180 sec. (from Main power switch ON) Approx. 30 sec. (from Power saver mode)
Dimensions (W x D x H) <sup>1)</sup>	600 x 758 x 900 mm
(Excluding optional equipment)	(Including Automatic Document Feeder and ADF mounting bracket)
Weight (Excluding optional equipment) <sup>1)</sup>	Approx. 131.5 kg
Digital Copier	
First Copy Time	Approx. 3.5 sec. (A4)
Resolution	600 dpi
Grey Scale	256 steps
Multi Copy Speed <sup>2)</sup>	60 cpm
Maximum Original Size	A3
Copy Size	A3 – A5 (fixed)
Copy Ratio	Enlargement (fixed) 200%, 173%, 141%, 122%, 115% Reduction (fixed) 87%, 82%, 71%, 58%, 50%
Zoom (variable)	25–400% (in 1% increments)
Multiple Copy	1 to 999, Automatic reset to 1
Exposure Control	Text, Text / Photo, Photo
Sort Memory	Standard 32MB (Image Memory) Optional Base Image Memory (32MB) plus 16MB <sup>3)</sup> / 64MB <sup>3)</sup> / 128MB <sup>3)</sup> (Max. 160MB) and optional HDD

Printer	
Network Printer Interface	Ethernet 10Base-T/100Base-TX, Bi-directional Parallel (IEEE1284)
Communication Protocol	TCP/IP (LPD, (Port9100/RAW), SNMP, DHCP) IPX/SPX <sup>4)</sup> (NDS, Bindery, NDPS) AppleTalk (PS), IPP (PCL, PS)
Printer Language (standard)	Panasonic Printing System for Windows <sup>®</sup>
(option)	PCL 5e Emulation <sup>®5)</sup> , PCL 6 Emulation <sup>®5)</sup> Adobe <sup>®</sup> PostScript3 <sup>®TM</sup> 6)
Printing Speed <sup>2)</sup>	60 ppm
Paper Size	Paper Tray: A3 – A5 Bypass: A3 – A5
Printing Resolution	1,200 dpi equivalent x 600 dpi (PCL, PS), 600 dpi x 600 dpi, 300 dpi x 300 dpi (PCL, PS, GDI)
Printer Memory	50MB
Compatible Operating Systems	Windows <sup>®</sup> XP/2000/Server 2003, 98, Me, WindowsNT <sup>®</sup> 4.0, MacOS 8.6-10.3 (PS only) <sup>4)</sup>
Network Scanner (Option)	
Network Scanner Interface	Ethernet 10Base-T/100Base-TX
Communication Protocol	TCP/IP (LPR, FTP)
Maximum Scanning Size	A3
Scanning Speed <sup>7)</sup>	Approx. 60 opm (Originals per minutes - A4 portrait with ADF)
Scanning Resolution	150 dpi x 150 dpi, 300 dpi x 300 dpi, 600 dpi x 600 dpi
Compatible Operating Systems	Windows <sup>®</sup> XP/2000/Server 2003, 98, Me, WindowsNT <sup>®</sup> 4.0
Data Format	TIFF, PDF
G3 Fax (Option)	
Compatibility	ITU-T Group 3, ECM
Modem Speed	33.6 - 2.4 kbps with automatic fallback
Coding Scheme	JBIG / MMR / MR / MH
Scanning Speed <sup>7)</sup>	Approx. 0.7 sec. (A4 portrait in Standard or Fine mode with ADF)
Transmission Speed <sup>8)</sup>	Approx. 2.9 sec.
Scanning Resolution	Standard: 8 dots/mm x 3.85 lines/mm Fine: 8 dots/mm x 7.7 lines/mm Super Fine: 16 dots/mm x 15.4 lines/mm 600 dpi: 600 dpi x 600 dpi
Maximum Original Size	A3
Effective Scanning Width	292 mm
Recording Resolution	600 x 600 dpi
Standard Memory <sup>9)</sup>	3MB (Approx. 180 pages)
Optional Memory <sup>9)</sup>	Base memory plus 4MB <sup>10)</sup> (320 pages) / 8MB <sup>10)</sup> (640 pages)
Speed Dials	200 (Max. 1,000 with optional HDD)
Internet Fax / Scan-to-Email (Option) <sup>11)</sup>	
Compatibility (Internet Fax)	IEF RFC 2305, ITU-T T.37
Communication Protocol	TCP/IP (SMTP, POP3, LDAP <sup>11)</sup> )
Network Connectivity	Ethernet 10Base-T/100Base-TX
Data Format	TIFF-FX (Profile S/F/J), PDF <sup>12)</sup>

### Dimensions



### Notes

- Dimensions and weight are approximate.
- Speeds are contingent upon applications, machine configuration, and status. Individual speeds may vary.
- Not available in certain destinations.
- Compatible with Novell NetWare<sup>®</sup> 3.11/3.12 and Novell Directory Services<sup>®</sup>.
- Printer Controller Module or Multi-Page Description Language Controller Module option required.
- Multi-Page Description Language Controller Module option required.
- Scanning speed applies to the feeding process from the top to the end of a single page test chart. The time for the feeding process does not include the time that it takes for the top edge of the page to reach the scanning point and page ejection. Time for entire storing process is not applied.
- Transmission time applies to memory transmission of text data using only ITU-T Image No. 1 between the same models at maximum modem speed. Transmission time may vary in actual usage. Usually public telephone lines can only support communication speeds of 28.8 Kbps or lower. Via PBX, transmission speed may fall back to a lower speed.
- Based on ITU-T Image No. 1 scanned in Standard mode.
- Depending on the receiving machines capability, the document may not be correctly printed depending on the chosen resolution and document size.
- This function is not available in certain destinations.
- T.37 Internet Fax only supports TIFF format.

Microsoft<sup>®</sup> Windows<sup>®</sup> and Windows NT<sup>®</sup> are registered trademarks of Microsoft Corporation. Adobe<sup>®</sup> PostScript<sup>®</sup>, PostScript<sup>®</sup> 3<sup>™</sup>, PDF and PostScript logo<sup>®</sup> are trademarks of Adobe Systems, Inc. in the United States and other countries. Novell NetWare<sup>®</sup> and Novell Directory Services<sup>®</sup> are registered trademarks of Novell, Inc. in the United States and other countries. PCL<sup>®</sup> is a registered trademark of Hewlett-Packard. WORKIO<sup>™</sup> is a registered trademark of Matsushita Electric Industrial Co., Ltd. All other brand or product names are the property of their respective holders.

the **SMART** way to work



**60 cpm / 60 ppm**  
Digital Copying / Printing

**Standard** Network Printing /  
Document Manager Software

**Advanced** Network and  
Job Management Capability

**Enhanced** Security Features

**Panasonic**<sup>®</sup>

ISO 9001  
Quality Management System  
Our business processes which produce document, information and network products, from manufacturing to marketing, conform to ISO9001 Quality Management Systems standard. Design, development, manufacture, installation, repair and maintenance of document, information and network products, their associated devices and consumables.  
In addition, the plants outside Japan have acquired ISO 9001 certification.



As an Energy Star<sup>®</sup> Partner, Panasonic has determined that this product meets the Energy Star<sup>®</sup> Guidelines for energy efficiency.



**WORKIO**<sup>™</sup>  
DIGITAL IMAGING SYSTEMS







# WORKiO – the Copying Solution



## high-speed A3-class copying

From routine copying of notes for a small audience, to the production of bound multi-page reports for an entire department, WORKiO DP-6030 can handle everything from the easiest job to the most complex high-volume job at a blazing speed of up to 60 A4-size copies per minute. Responding to the demand for large-size document copying, A3-size paper handling is standard. ■



## capacity that grows with your needs

WORKiO DP-6030 is ready to meet the needs of most high-volume work environments. The standard huge capacity of 2,150 sheets is realized by a 1,550-sheet large-capacity tray, a 550-sheet paper tray and a 50-sheet bypass tray. However, if more capacity is required, the addition of two optional 550-sheet trays and a 3,000-sheet cassette can raise capacity to a maximum 6,250 sheets.

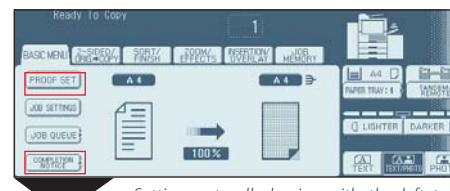


## Meet the Friendliest Face in the Office

Designed to let even a first-time user take full advantage of the many digital copying conveniences, the WORKiO DP-6030 GUI sets a new standard in ease of operation. The left-to-right menu arrangement follows the natural flow of work and takes the complexity out of setting the most challenging copy jobs. The spacious layout of the large touch-screen panel displays the settings with easy-to-understand graphics to speed identification and selection.

## Simple, easy to follow steps for Booklet Making

### Step 1:



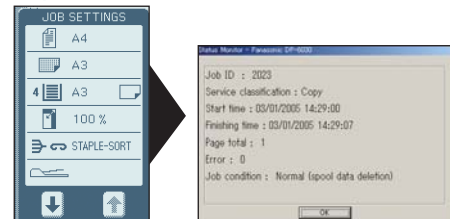
Setting naturally begins with the left tab "Basic" menu. Select "Proof Set" to obtain one sample set to check all job settings before committing to a mass copying job. You can choose to be informed when the job is done by pressing the "Completion Notice" button on the bottom left of the screen.

### Step 2:



The next tab "2-sided/orig->copy" offers a variety of choices that use built-in duplex. Each is represented by text and easy-to-understand graphics, choose "Booklet."

### Step 3:



The "Job Setting" summary function is visible on the right side of the interface and it lets the user confirm settings and easily go back to make changes. As soon as the job starts, the user can return to their desk and take care of other business until the WORKiO DP-6030 sends a job completion notice directly to their desktop.

## The DP-6030's optional 40GB HDD provides these additional functions:

- Concurrent Copy up to 12 Copy Jobs
- Tandem Copy – Copy the same job on 2 DP-6030's
- Remote Copy – Send your copy job to another WORKiO\*
- Security Print – Password protect documents so they don't print until you are at the machine
- Mailbox Print – Send many jobs to the WORKiO and print them when you get there
- Print Spooling – Takes many jobs in freeing up your workstation faster
- Up to 1000 One-Touch Address\*\* with Fax or Internet Fax option
- Accounting Software option compatibility
- PostScript resident font storage with PostScript option



## double-side copying for double savings

Built-in duplex unit enables copying on both sides of each sheet for higher productivity and economy. Used in combination with the Automatic Document Feeder, users can exploit the advantages of high-speed duplex copying.

## innovative interface

Engineered from the ground up for ease of use, this platform also saves time in job setting through an innovative and friendly GUI. The intuitive tabbed interface on the extra-large half-VGA LCD display (640 x 240 pixels) gives users quick access to basic copying functions and leads the user through advanced settings such as image rotation and finishing options. Prior to job execution, a graphical confirmation of the original versus the final job setting is provided in effort to prevent costly copying errors. While the WORKiO DP-6030 is completing a large-volume job, the user can attend to other priorities and a completion notice will be sent directly to their PC when their copy job is finished. ■

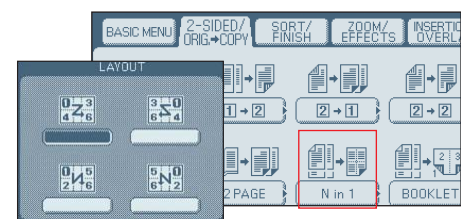
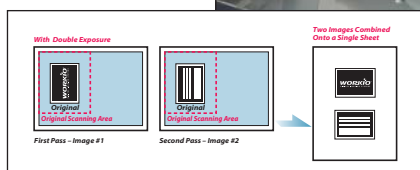
## versatility and convenience

In digital copying versatility, the WORKiO DP-6030 is unsurpassed with features like a built-in duplex unit and high-speed automatic document feeder. Conveniences like Double Exposure, Digital SkyShot, N-in-1 Copy, Zoom and Image Rotation introduce users to new flexibility in digital copying, while Sort Copy electronically collates copies as shifted and rotated sets, saving valuable time, while increasing productivity. ■



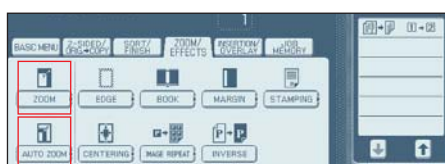
## Double Exposure WORKiO Original

By selecting the Double Exposure function located on the control panel, users can make quality copies of double-sided documents on a single sheet of paper without the black borders, even if the platen cover is open. This is especially convenient for copying small double-sided originals such as ID and insurance cards, cheques, and receipts.



## N-in-1 copy

Using the easy-to-understand interface, copying multiple originals on a single sheet is very simple; accelerating document production while saving paper.



## Zoom Copy

Featuring easy automatic presets and manual control in 1% steps, WORKiO DP-6030 makes enlargement and reduction of copies easy, fast and flexible.

## high-quality image reproduction

Speed never comes at the expense of quality with WORKiO. The ultra-fine toner/carrier particles and image stabilising technology ensure 600 x 600 dpi resolution and 256-level grey scale to produce copies with high legibility and clear sharp images at high speed across multiple generations. ■

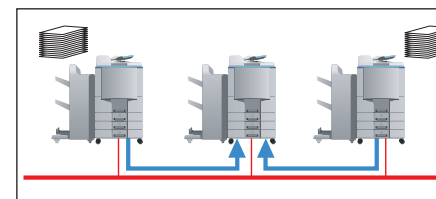


## Image Enhancement Technology

A picture is worth a thousand words and the WORKiO DP-6030 makes sure the image quality delivers full value by faithfully copying every graphic nuance and the smallest text in clear detail.

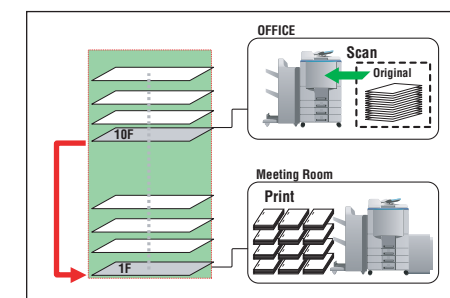
## network-enhanced functionality

Connectivity may not seem important in copy mode until you explore how the inherent networkability of the WORKiO DP-6030 enables enhanced capabilities such as Tandem Copy\*, Remote Copy\* and even copy job completion notices. ■



## Tandem Copy\*

For extra-large jobs with tight deadlines, Tandem Copy lets you harness the power of multiple WORKiO platforms to work jointly on a single job.



## Remote Copy\*

With remote copy, a copy job can be sent to another networked WORKiO platform on another floor or in a different department.

\*1 Tandem/Remote Copy functions are applicable only between the DP-6030/4530/3530 and other DP-6030/4530/3530/6020/4520/3520/6010/4510/3510

\*1 Hard Disk Drive Unit is required.

## complete from start to finish

The final step of manually "finishing" copies as stapled or bound sets is very time-consuming. The addition of the optional stapling, punching and saddle-stitching finishing modules automates this process and makes your WORKiO DP-6030 a complete document solution from start to finish. Always visible on the right side of the interface, the Job Setting window provides an easy-to-see, easy-to-navigate graphical list of all user settings, enabling confirmation of "finish" or any other settings beforehand. ■



## Finishing the Job

Select sorting/finishing options and pick up your collated sets of copies. With optional finishing modules, sets are automatically stapled or saddle-stitched or hole-punched for ring binding.



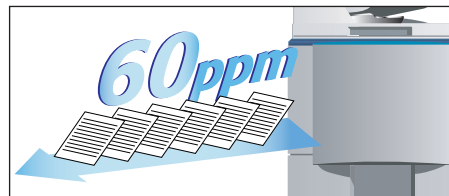
# WORKiO – the Printing Solution



## Up to 60-ppm network printing plus A3-output capability

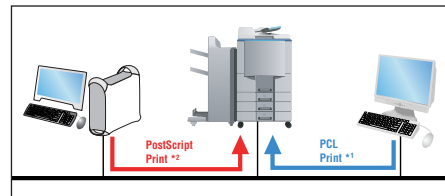
Equipped with 10Base-T/100Base-TX network connectivity as a standard feature, **network-ready** WORKiO DP-6030 gives all PCs on your LAN access to a super-fast speed of up to 60-ppm (A4-size) printing. Custom LSIs and a high-performance microprocessor makes sure that quality is not compromised even at this high speed. Effortlessly meeting heavy volume needs with total reliability, this **A3-class** platform further enhances productivity with a built-in automatic duplex unit. ■

\*The optional Plain Stand, System Console 1 or System Console 2 is required for copying/printing with A3, B4/Foolscap paper size.



## beyond stand-alone printer performance

Built to measure up to the tough day-to-day high-volume demands of the busiest environments, the durable printer engine pumps out high-quality prints at up to 60 ppm – more than triple the speed of most single-function office printers. In addition, its A3-size output capability is uncommon in standard PC printers.



## leveraging your network with connectivity

WORKiO is about sharing networked resources and multiplying their effectiveness. With the standard 10Base-T/100Base-TX Ethernet interface, the DP-6030 immediately enables all networked PCs to access the power and performance of network printing from the desktop. A parallel interface is also included for direct connection to a dedicated PC.

\*1 Optional PCL Printer Controller Module is required.

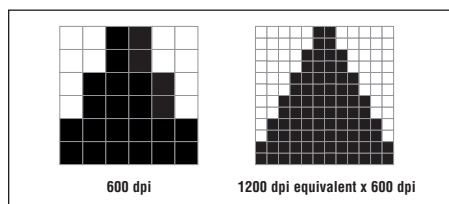
\*2 Optional Multi-Page Description Language Controller Module is required.

## friendly graphical drivers

Easy-to-install graphical printer drivers empower users with full control of versatile printing functions right from the desktop. From the intuitive tabbed interface to on-screen graphical preview of job settings, everything is designed to maximize ease of use and eliminate costly errors. ■

## quality in detail

True 600 x 600 dpi resolution is more than enough image quality for professional-quality documents. However the DP-6030 raises the bar with Panasonic's Image Enhancement Technology and produces quality equivalent up to 1,200 dpi for even smoother gradations, sharper details, and superb photos and graphics. Small text is easily legible even against background graphics. In addition to standard Windows GDI printing, WORKiO DP-6030 offers optional modules and drivers to expand printing versatility with PCL and PostScript capabilities. ■



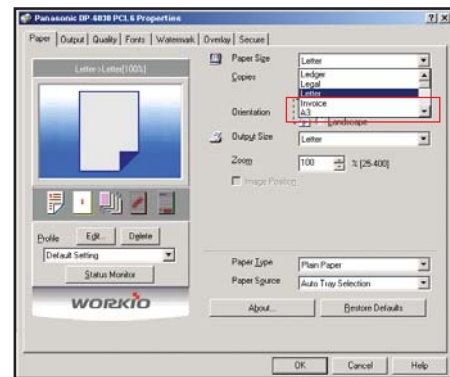
## improving images pixel by pixel

Panasonic's Image Enhancement Technology makes a visible difference in every print. By producing images with the equivalent of twice the number of dots per inch of a 600 dpi printer, WORKiO DP-6030 gives documents smoother curves, diagonals and banding-free gradations.



## behind speed and quality

Powered by a high-performance microprocessor and custom-developed LSIs, the improved imaging processing speed and quality ensures high-speed printing of crisp high-quality images.



### Step 1:

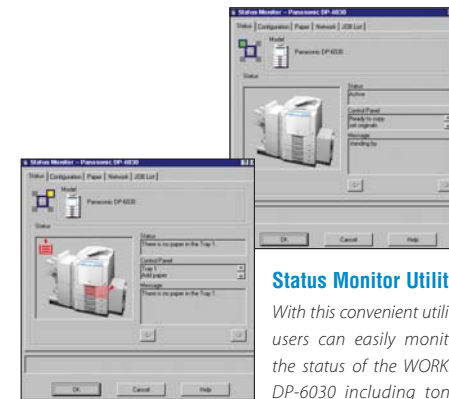
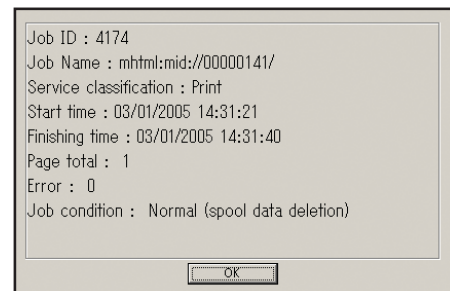
Select the paper size in the WORKiO printer driver menu.



### Step 2:

Select from a range of labour-saving finishing options.

**Step 3:** After sending the job to the printer, the DP-6030 sends a Completion Notice to the user notifying them that their job is finished, eliminating wasted trips to check the machines status especially when the print job queue is full.



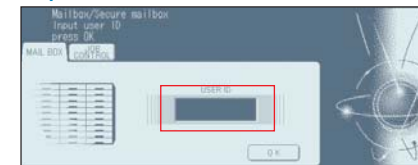
## Status Monitor Utility

With this convenient utility, users can easily monitor the status of the WORKiO DP-6030 including toner and paper supply.

## print data storage box

Mail Box or Security Box space on the optional hard disk can be assigned to a maximum of 100 users for storage of printing data inside the WORKiO DP-6030. Data is sent from the user's PC to the Mail/Security Box and can be printed at a later date. The security of 8-digit User IDs and 4-digit passwords is available to protect sensitive documents.

### Step 1:



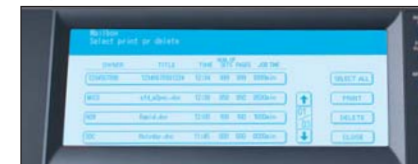
Enter your User ID under the "Mail Box" menu.

### Step 2:



Select "Mailbox" to gain access to your personalized disk space

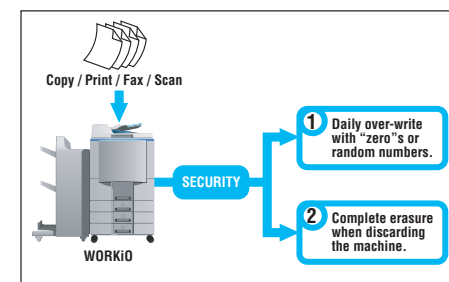
### Step 3:



Select the desired job run and press "Print."

## Enhanced hard disk erasing

WORKiO gives you choices, letting the user decide on how securely they want their data to be kept, or deleted.

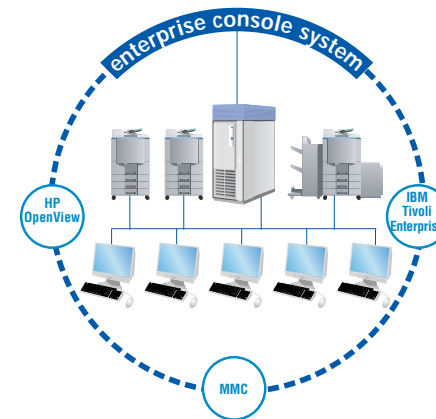


## handy status monitor

A visual **Status Monitor** lets users check the current status of the WORKiO DP-6030 without leaving their desks. If toner is low or the paper bin needs to be refilled, users know immediately and can respond quickly, avoiding costly downtime. ■

## true system integration

For today's networked business environment, WORKiO responds with advanced features that explore the full potential of network connectivity. By connecting the DP-6030 to a sophisticated enterprise console system, WORKiO's **Console Management System** can help preempt issues that diminish productivity. ■



## systematic issue identification and resolution

Enterprise console systems help maintain peak system performance and availability while reducing support costs in a corporate computing environment. Incorporating **MetaConsole™** technology licensed from Netaphor™ Software, WORKiO can be set up as a device that can be managed by popular Enterprise Console Systems such as HP OpenView™, IBM Tivoli™ Enterprise, and Microsoft® Management Console (MMC).

\*MetaConsole™ is a trademark of Netaphor™ Software Inc.

\*Tivoli™ is a trademark of IBM Corporation.

\*Microsoft® Management Console is a registered trademark of Microsoft Corporation.

\*OpenView is a trademark of Hewlett-Packard

## "smart" economy and efficiency

The optional hard disk drive unit enables **document storage** in mailboxes that can be password protected for secure printing. A security function can be added that overwrites "0" data after print data is output from the hard disk\*. Intelligent Job Control Management is another important benefit of the new WORKiO series. The enhanced GUI lets users view the print queue and approximate job times as well as delete individual print or copy jobs if necessary. The administrator can monitor the device status such as the job queue as well as set up or configure the system via a network. The easy-to-install optional Network Accounting Software can provide detailed usage logs by individual users and departments. ■

\*Consult with your dealer or sales company in order to use these functions effectively.

## multi-level security

**hard disk data deletion\*** – A welcome security function that erases data on a hard disk by overwriting it with zero data or random numbers. It can also erase all hard disk data when the computer is discarded. This prevents the leakage of information and eliminates worries about data that would otherwise be left on hard disks. ■

**mailbox** – Users can send print jobs to be stored in the WORKiO mailbox. Then whenever they want to print them, for example, at a later time to keep them from being output together with other people's jobs, the DP-6030 will print them all at once. ■

**secure mailbox** – Sensitive "eyes only" documents can be temporarily stored in the secure mailbox. Users enter their ID and passwords to safely print out the documents at any time they choose. ■

\* These functions require the optional hard disk unit and memory board.

## network accounting software

The optional Network Accounting Software can collect and tabulate log information data such as number of prints, copies and faxes that has accumulated in the DP-6030. This is useful for obtaining data from a variety of analysis and period totals for each job or output tabulations by department and user. ■



# WORKiO – the Scanning & Document Distribution Solution

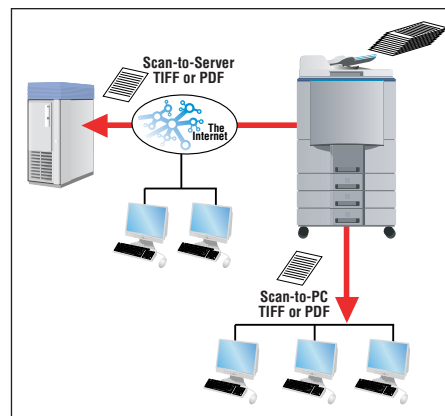


## high-speed network scanning

WORKiO DP-6030 is also a high-speed scanning solution. Equipped with an inverting ADF unit (70-page capacity), it can automatically perform double-side scanning of documents as large as A3 size. Thanks to the high-resolution scanning at 600 x 600 dpi with 256 grayscale halftone using error diffusion technology, clear crisp image quality is achieved. ■

## network scanning versatility

When the optional Network Scanning Module is combined with the WORKiO's built-in network connectivity, the DP-6030 becomes a powerful high-speed network scanner that revolutionizes document distribution. Instead of copying documents and hand delivering them to individuals, network scanning and the intuitive WORKiO interface make it easy to send scanned documents to an FTP server or a PC on the LAN. The "File Naming" feature gives you the freedom to assign a name to scanned files right at the platform for easy identification. ■



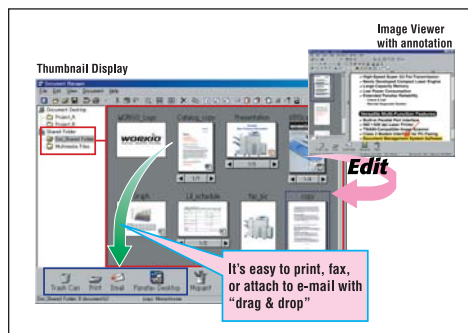
### High-speed network scanner

Broad OS compatibility ensures that LAN clients using Windows XP/Server 2003/2000/98/Me and even Windows NT take advantage of the versatile "Push-type" network scanning capability.

\*To open the TIFF or PDF file, Panasonic Document Management System software and/or Adobe® Reader™ are required.

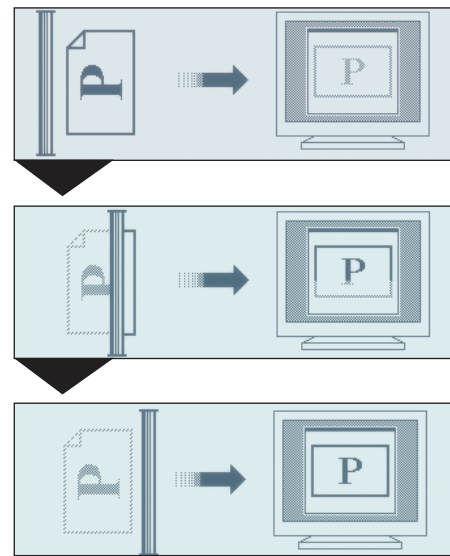
## desktop document management

WORKiO not only gets documents into the digital flow faster with its high-speed scanning, it also provides Document Manager software for efficient management, editing and sharing of scanned documents. For very large-scale document management based on a client-server model, the optional DD Server System takes your business another step closer towards realizing paperless document management is possible. ■



### Scanned Document Management

When a scanned document arrives, Document Manager notifies the user and automatically opens it. Image Viewer enables the user to easily view, annotate or attach memos to the file. With the simple "drag and drop" operation, users can manage and edit documents right from their desktop, and even share them with other PCs.



### Powerful distribution options at your fingertips

Friendly WORKiO GUI guides users through every step of the scanning and document distribution process. For example, even after pressing start, the interface keeps the user informed of the scanning progress with an animated graphic.

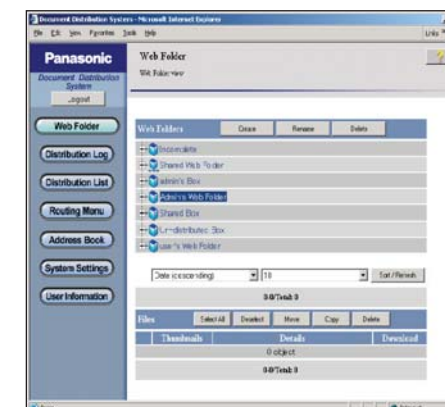
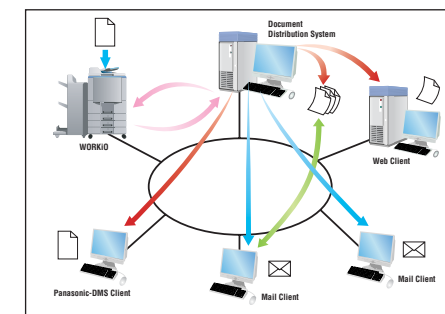


### File naming

For more convenient file management, WORKiO gives you the freedom to name data files. Using the Soft Keyboard with the QWERTY layout, name entry is easy!

## Document Distribution System\*

\*Optional Network Scanner Module is required.



Web Folder View



### One-Touch Document Routing

WORKiO's Address Book allows registration of up to 1,000 addresses<sup>\*\*</sup>, Fax numbers and email addresses. In addition, network addresses can be registered easily by using the "soft" keyboard, and a handy utility supports easy creation of standardized email headers.

\*3 Optional Hard Disk Drive Unit is required.

## Document Distribution System (DDS)

DDS is a powerful tool that lets users create distribution jobs and routing menus for fast, precisely targeted, automatic distribution. Once workflow routines have been defined, DDS will automatically route and distribute scanned documents, inbound faxes and internet faxes, greatly simplifying repetitive distribution tasks. The routing menus in the WORKiO control panel are easy to understand and navigate. DDS also offers versatile image processing, including auto rotation, skew correction, noise reduction, automatic or manual file naming and OCR text extraction. In addition, users can store and view documents in secure Web folders, with sensitive information archived by sender, recipient, inbound routing and inbound address. ■

## fast faxing

Transform the WORKiO DP-6030 into a high-performance fax station. The optional fax communication kit adds fast 33.6 kbps Super G3 fax with JBIG compression capability accelerated by 0.7-sec "Quick Scanning" for shorter prep time and Quick Memory Transmission. High 600 x 600 dpi communication resolution preserves the high scanning resolution of WORKiO for accurate reproduction at the destination. One of the smart features of the DP-6030 is a function that automatically switches to fax mode by determining that a telephone number is being entered when a number over 6 digits is keypad in. ■

## internet faxing

With the Internet Fax / Email option, the DP-6030 can be set up to scan documents as TIFF images or PDF files allowing the user to transmit them as email attachments. For example, with the "Send-to-Email" feature, scanned documents can be directly sent from the WORKiO DP-6030 to other Internet Fax-capable<sup>\*\*1,2</sup> platforms or even multiple email clients anywhere in the world. Simultaneous distribution of the same document to multiple email clients and G3 fax terminals is easy using the "Mixed Broadcast" feature and convenient fax/email utilities like the WORKiO Address Book. ■

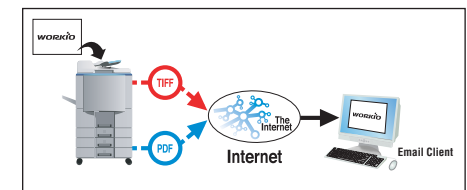
\*1 In the case of the Send-to-Email transmission at 600 dpi and/or A3 documents, reception may not be possible in some instances due to reception-side function.

\*2 Receiving data from Internet Fax only supports TIFF-FX format.

## gateway to "paperless" productivity

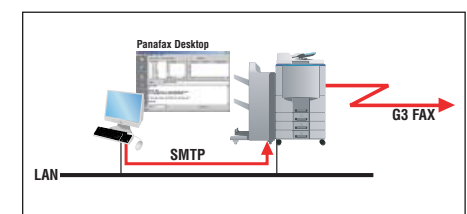
WORKiO's Internet Fax / Email option also provides the platform with a fax / email gateway function. Incoming faxes<sup>\*\*3</sup> can be automatically routed to the designated recipient's email inbox where the attached image file can be easily opened and viewed with a standard image viewer such as "Imaging for Windows". The optional fax communication kit and Panafax Desktop software allows users to send documents directly from their PC via the LAN and WORKiO gateway to G3 fax machines around the world.<sup>\*\*4</sup> ■

\*3 Fax Communication Board is required.  
\*4 Internet Fax/E-mail Module is required.



### The Fax capable clients

The WORKiO DP-6030 can be set up to scan images in standard TIFF or the popular PDF format and transmit them as email attachments.



### Panafax Desktop Software

PC Fax lets users send documents from their PCs directly to fax machines, eliminating the step of printing a hard copy and then running it through the fax machine. The PC Fax capability can save valuable time, labour, and paper.



## the solution you can depend on

Reliability has always been WORKiO's number one priority, especially in the case of a multifunction digital hub because downtime can be very costly. Every aspect of the WORKiO DP-6030, from its extra rugged chassis and high-reliability copier/ printer engine, to the long service life of the drum and other periodically replaced parts, is engineered to last. ■

## Remote Maintenance System

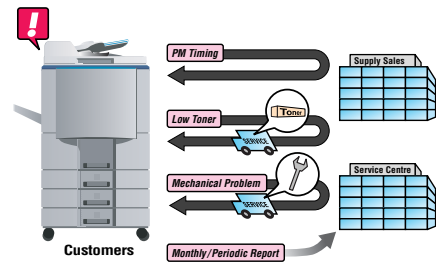
"Check & Call\*" can prevent costly downtime caused by issues that sometimes get over looked such as running out of toner or by providing an early warning notice regarding mechanical failures by automatically reporting the machines status directly to a service centre. Our remote maintenance system is also supported by a Remote Diagnostic System that can take advantage of the WORKiO DP-6030's connectivity via a telephone line or via the internet. This feature enables technicians to quickly trouble-shoot and provide solutions. ■



### "Check & Call"

To prevent interruptions in productivity, our convenient "Check and Call" system enables service centres to stay on top of your printers status and performance. For example, the built-in automatic report function lets us know when toner is running low or if mechanical failures require attention.

\* Optional Fax Communication Board or Internet Fax/E-Mail Module is required.

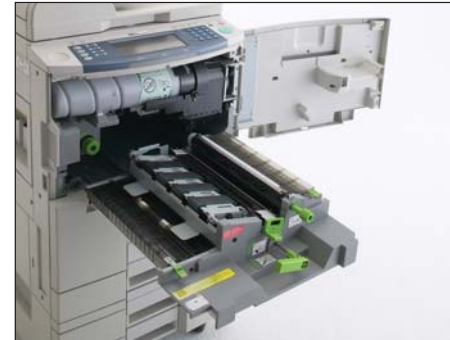


## Service Friendly

Full-front access is one of the distinctive design features of WORKiO's "service-friendly" concept.



Changing the toner bottle is as easy as opening the front panel door.



The toner bottle swings out of the way and the entire printer engine slides out for easy access. Servicing core components and addressing mechanical failures has never been easier.

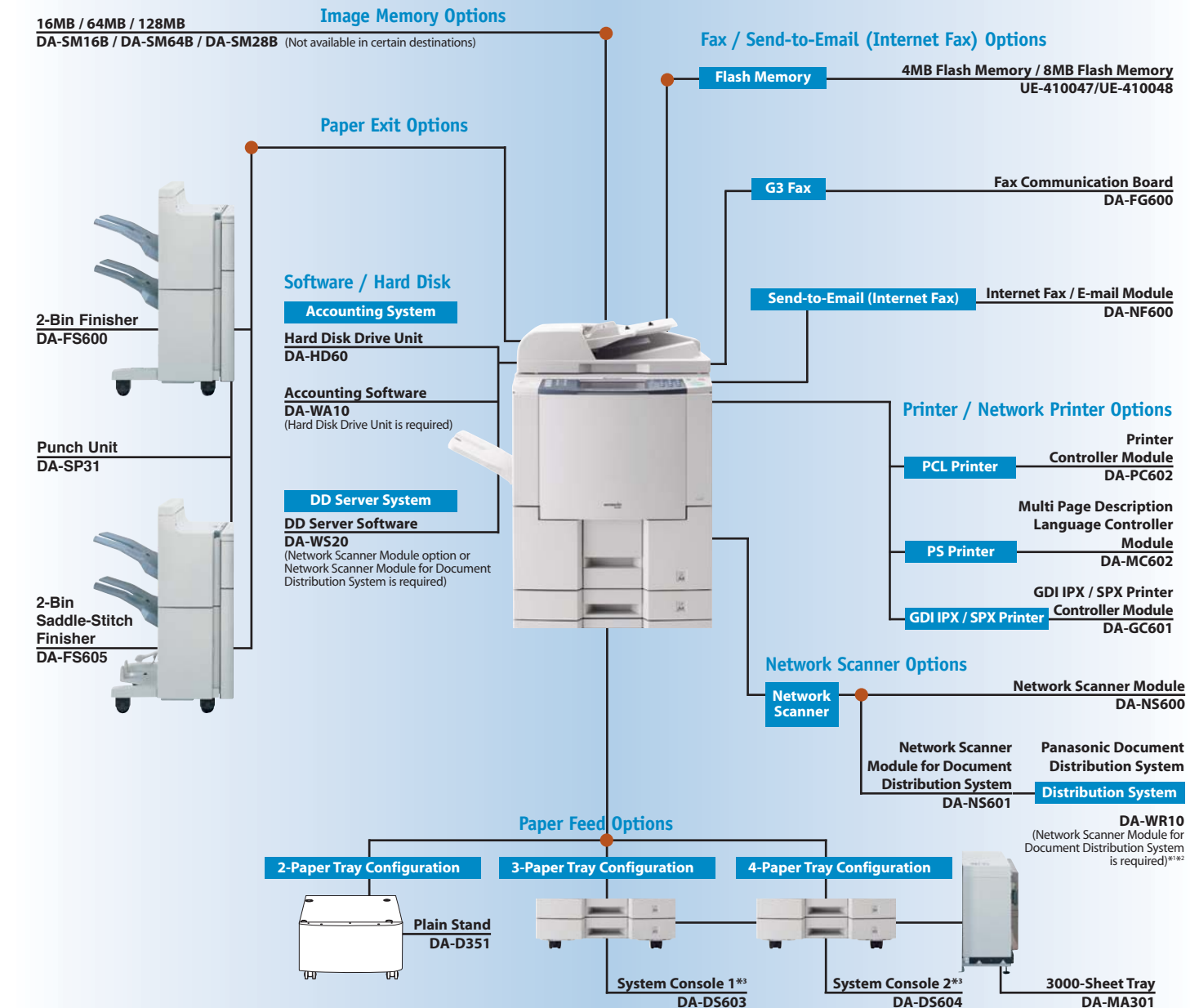


## environmentally friendly

The environmentally friendly design is not just good corporate citizenship, it also makes good business sense. The Energy Star-compliant WORKiO DP-6030 contributes to lower TCO because it uses very little energy and significantly reduces power when in idle mode. In sleep mode, energy needs drop to virtually nothing and the work environment is also quieter and cleaner thanks to reduced noise and ozone emissions. ■

The WORKiO DP-6030 offers a wide range of options to build a custom configuration that precisely matches your current needs and can be easily upgraded as your business grows.

● SELECT ONE



\*1 If the distribution of G3 Fax data is necessary, Fax Communication Board (DA-FG600) and Internet Fax / Email Module (DA-NF600) are required.

\*2 If the distribution of Internet Fax data is necessary, Internet Fax / Email Module (DA-NF600) is required.

\*3 The optional Plain Stand (DA-D351), System Console 1 (DA-DS601) or System Console 2 (DA-DS602) is required for copying/printing with A3, B4/Foolscap paper size

## Free Manuals Download Website

<http://myh66.com>

<http://usermanuals.us>

<http://www.somanuals.com>

<http://www.4manuals.cc>

<http://www.manual-lib.com>

<http://www.404manual.com>

<http://www.luxmanual.com>

<http://aubethermostatmanual.com>

Golf course search by state

<http://golfingnear.com>

Email search by domain

<http://emailbydomain.com>

Auto manuals search

<http://auto.somanuals.com>

TV manuals search

<http://tv.somanuals.com>