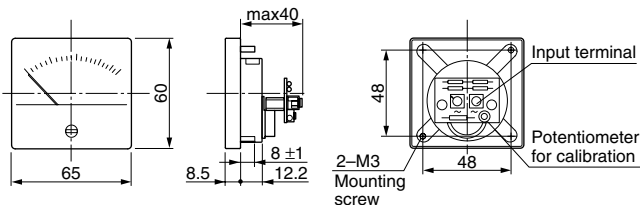
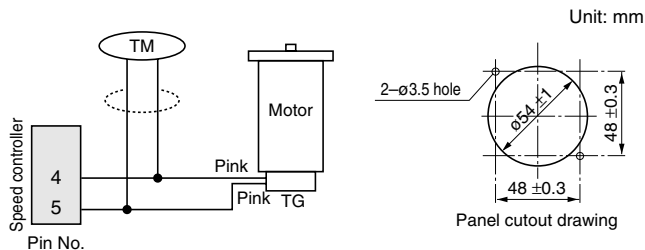


5. Options

Tachometer (DVOP001)

This tachometer is especially designed to operate with our speed controller so that it can provide easier displaying of motor speed.



<Precautions>

- Connect the tachometer in parallel with the tachometer generator (TG).
- If the tachometer (TM) requires longer connection cable, use shielded twisted pair cable. Don't ground shielding of the cable.
- Accuracy of tachometer readings will depend on variation in motor performance and operating environment (temperature and noise). The tachometer should be used as a rough indicator.

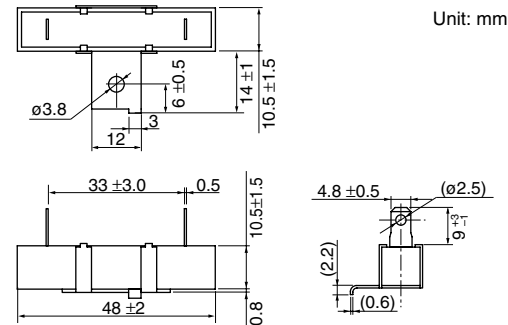
<Note>

Calibrate the scale of the tachometer (TM) from the potentiometer on the rear panel.

1. While running the motor at its full rotation speed without load, adjust to 1450 min^{-1} if power supply is at 50 Hz, or 1750 min^{-1} if 60 Hz.
 2. Monitor the output signal of the TG on an oscilloscope and determine the frequency. And adjust:
rotating speed N (min^{-1}) = 5 x f (Hz)
- Caution: Since the circuit is not isolated from the power supply, use an insulated tool such as an insulated screwdriver to protect against electric shock.

External braking resistor (DVOP003)

5.6 Ω 10W



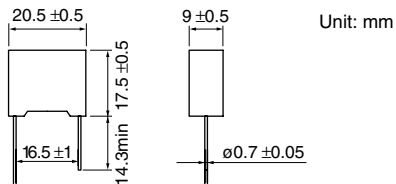
<Precautions>

The resistance of DVOP003 is 5.6 Ω . When using commercially available resistor, choose 4.7-6.8 Ω , 10 W or larger.

5. Options

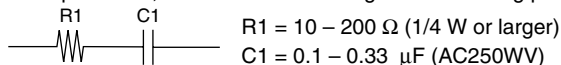
Spark killer (DVOP008)

0.1 μ F 120 Ω



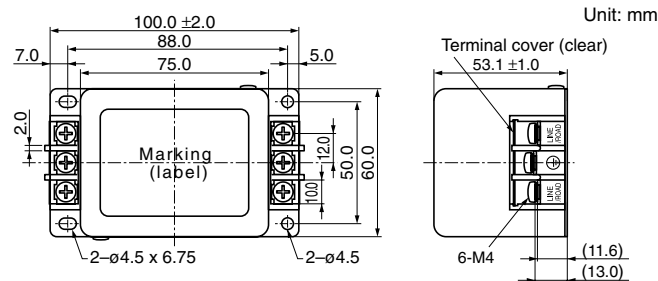
<Precautions>

The capacitance of capacitor in the DVOP008 is 0.1 F and the resistance of the internal resistor is 120 Ω . When using commercially available spark killer, choose one consisting of the following parts:

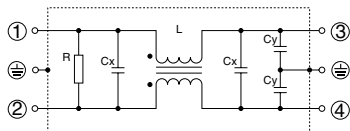


Noise filter (DVOP3611-5)

Type SUP-EQ5-ER-6: Okaya Electric Industries Co., Ltd.

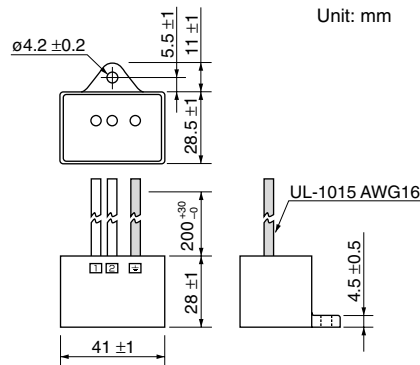


<Circuit diagram>

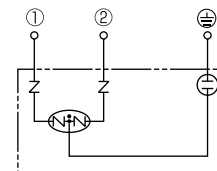


Surge absorber (DVOP4190)

Type R.A.V-781BWZ-4: Okaya Electric Industries Co., Ltd.

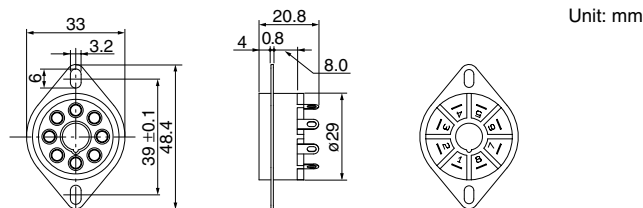


<Circuit diagram>



Octal pin socket (DVOP4560)

Type S-3898: Sato Parts Co., Ltd.



Free Manuals Download Website

<http://myh66.com>

<http://usermanuals.us>

<http://www.somanuals.com>

<http://www.4manuals.cc>

<http://www.manual-lib.com>

<http://www.404manual.com>

<http://www.luxmanual.com>

<http://aubethermostatmanual.com>

Golf course search by state

<http://golfingnear.com>

Email search by domain

<http://emailbydomain.com>

Auto manuals search

<http://auto.somanuals.com>

TV manuals search

<http://tv.somanuals.com>