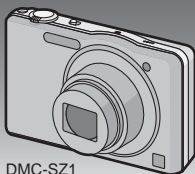


Panasonic®

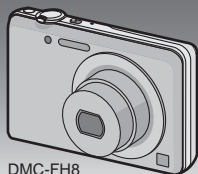
Basic Owner's Manual Digital Camera

Model No. **DMC-SZ1**
DMC-SZ02
DMC-FH8

LUMIX



DMC-SZ1
DMC-SZ02



DMC-FH8

Before connecting, operating or adjusting this product,
please read the instructions completely.



More detailed instructions on the operation of this camera are contained in "Owner's Manual for advanced features (PDF format)" in the supplied CD-ROM. Install it on your PC to read it.



For USA and Puerto Rico assistance, please call: 1-800-211-PANA(7262) or,
contact us via the web at: <http://www.panasonic.com/contactinfo>

VQT3Z30
F1211MR0



Dear Customer,

Thank you for choosing Panasonic!

You have purchased one of the most sophisticated and reliable products on the market today. Used properly, we're sure it will bring you and your family years of enjoyment. Please take time to fill in the information on the below. The serial number is on the tag located on the underside of your camera. Be sure to **retain this manual** as your convenient camera information source.

Date of Purchase	Dealer Phone No.
Dealer Purchased From	Model No.
Dealer Address	Serial No.

Please note that the actual controls and components, menu items, etc. of your Digital Camera may look somewhat different from those shown in the illustrations in this Owner's Manual.

Carefully observe copyright laws.

- Recording of pre-recorded tapes or discs or other published or broadcast material for purposes other than your own private use may infringe copyright laws. Even for the purpose of private use, recording of certain material may be restricted.



A lithium ion battery that is recyclable powers the product you have purchased. Please call 1-800-8-BATTERY for information on how to recycle this battery.

-If you see this symbol-

Information on Disposal in other Countries outside the European Union

This symbol is only valid in the European Union.

If you wish to discard this product, please contact your local authorities or dealer and ask for the correct method of disposal.



Information for Your Safety

WARNING:

To reduce the risk of fire, electric shock or product damage,

- Do not expose this unit to rain, moisture, dripping or splashing.
- Do not place objects filled with liquids, such as vases, on this unit.
- Use only the recommended accessories.
- Do not remove covers.
- Do not repair this unit by yourself. Refer servicing to qualified service personnel.

The socket outlet shall be installed near the equipment and shall be easily accessible.

■ Product identification marking

Product	Location
Digital Camera	Bottom

FCC Note:

This equipment has been tested and found to comply with the limits for a Class B digital device, pursuant to Part 15 of the FCC Rules. These limits are designed to provide reasonable protection against harmful interference in a residential installation. This equipment generates, uses, and can radiate radio frequency energy and, if not installed and used in accordance with the instructions, may cause harmful interference to radio communications. However, there is no guarantee that interference will not occur in a particular installation. If this equipment does cause harmful interference to radio or television reception, which can be determined by turning the equipment off and on, the user is encouraged to try to correct the interference by one or more of the following measures:

- Reorient or relocate the receiving antenna.
- Increase the separation between the equipment and receiver.
- Connect the equipment into an outlet on a circuit different from that to which the receiver is connected.
- Consult the dealer or an experienced radio/TV technician for help.

FCC Caution: To assure continued compliance, follow the attached installation instructions and use only shielded interface cables with ferrite core when connecting to computer or peripheral devices.

Any changes or modifications not expressly approved by the party responsible for compliance could void the user's authority to operate this equipment.

Declaration of Conformity

Trade Name: Panasonic
Model No.: DMC-SZ1
DMC-SZ02
DMC-FH8
Responsible Party: Panasonic Corporation of North America
One Panasonic Way, Secaucus, NJ 07094
Support Contact: Panasonic Consumer Marketing Company of North America
1-800-211-PANA (7262)

This device complies with Part 15 of the FCC Rules. Operation is subject to the following two conditions: (1) This device may not cause harmful interference, and (2) this device must accept any interference received, including interference that may cause undesired operation.



■ About the battery pack

CAUTION

Battery pack (Lithium ion battery pack)

- Use the specified unit to recharge the battery pack.
- Do not use the battery pack with equipment other than the specified unit.
- Do not get dirt, sand, liquids, or other foreign matter on the terminals.
- Do not touch the plug terminals (+ and -) with metal objects.
- Do not disassemble, remodel, heat or throw into fire.

If any electrolyte should come into contact with your hands or clothes, wash it off thoroughly with water.

If any electrolyte should come into contact with your eyes, never rub the eyes. Rinse eyes thoroughly with water, and then consult a doctor.

CAUTION

- Danger of explosion if battery is incorrectly replaced. Replace only with the type recommended by the manufacturer.
- When disposing the batteries, please contact your local authorities or dealer and ask for the correct method of disposal.

- Do not heat or expose to flame.
- Do not leave the battery(ies) in a car exposed to direct sunlight for a long period of time with doors and windows closed.

Warning

Risk of fire, explosion and burns. Do not disassemble, heat above 60 °C (140 °F) or incinerate.

■ About the AC adaptor (supplied)

CAUTION!

To reduce the risk of fire, electric shock or product damage,

- Do not install or place this unit in a bookcase, built-in cabinet or in another confined space. Ensure this unit is well ventilated.
- Do not obstruct this unit's ventilation openings with newspapers, tablecloths, curtains, and similar items.
- Do not place sources of naked flames, such as lighted candles, on this unit.

AC adaptor

This AC adaptor operates on AC between 110 V and 240 V.

But

- In the U.S.A. and Canada, the AC adaptor must be connected to a 120 V AC power supply only.
- When connecting to an AC supply outside of the U.S.A. or Canada, use a plug adaptor to suit the AC outlet configuration.

■ Cautions for Use

- Do not use any other USB connection cables except the supplied one.

DMC-SZ1

Do not use any other AV cables except the supplied one.

DMC-SZ02

DMC-FH8

Always use a genuine Panasonic AV cable (DMW-AVC1: optional).

Keep this unit as far away as possible from electromagnetic equipment (such as microwave ovens, TVs, video games etc.).

- If you use this unit on top of or near a TV, the pictures and/or sound on this unit may be disrupted by electromagnetic wave radiation.
- Do not use this unit near cell phones because doing so may result in noise adversely affecting the pictures and/or sound.
- Recorded data may be damaged, or pictures may be distorted, by strong magnetic fields created by speakers or large motors.
- Electromagnetic wave radiation generated by microprocessors may adversely affect this unit, disturbing the pictures and/or sound.
- If this unit is adversely affected by electromagnetic equipment and stops functioning properly, turn this unit off and remove the battery or disconnect AC adaptor (supplied). Then reinsert the battery or reconnect AC adaptor and turn this unit on.

Do not use this unit near radio transmitters or high-voltage lines.

- If you record near radio transmitters or high-voltage lines, the recorded pictures and/or sound may be adversely affected.

Contents

Information for Your Safety	3
Before Use	7
Standard Accessories	8
Names and Functions of Main Parts	9
Inserting and Removing the Card (optional)/the Battery	11
Charging the Battery	12
Sequence of operations	13
Reading the Owner's Manual (PDF format)	14
Installing supplied software	15
Specifications	16
Digital Camera Accessory System	19
Digital Camera Accessory Order Form	20
Limited Warranty (ONLY FOR U.S.A. AND PUERTO RICO)	21

• Please note that the actual controls and components, menu items, and other information for your digital camera may differ from those in the illustrations and screens provided in this manual. When operation or other information is more or less the same between models, **DMC-SZ1** are used as examples for the instructions provided in this manual.

• The operations, procedures, or functions that differ among models are indicated separately, together with the relevant model number.

e.g.:

DMC-SZ1

DMC-FH8

Before Use

■ Care of the camera

- Do not subject to strong vibration, shock, or pressure.
- This camera is not dust/splash/water proof.
Avoid using the camera in places with a lot of dust, water, sand, etc.

■ About Condensation (When the lens is fogged up)

- Condensation occurs when the ambient temperature or humidity changes. Be careful of condensation since it causes lens stains, fungus and camera malfunction.
- If condensation occurs, turn the camera off and leave it for about 2 hours. The fog will disappear naturally when the temperature of the camera becomes close to the ambient temperature.


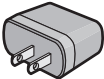




Standard Accessories

Check that all the accessories are supplied before using the camera.
Product numbers correct as of January 2012. These may be subject to change.

- 1 Battery Pack
(Indicated as **battery pack** or **battery** in the text)
Charge the battery before use.
- 2 AC Adaptor
Can be used for charging and playback.
- 3 USB Connection Cable
- 4 **DMC-SZ1**
AV Cable*
- 5 CD-ROM
 - Software
 - Owner's Manual for advanced featuresInstall on your PC before use.
- 6 Hand Strap

* AV cable is not provided in **DMC-SZ02**
DMC-FH8.

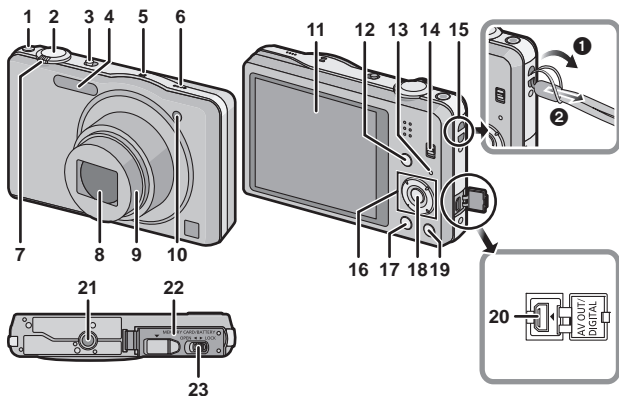
- SD Memory Card, SDHC Memory Card and SDXC Memory Card are indicated as **card** in the text.
- **The card is optional.**
You can record or play back pictures on the built-in memory when you are not using a card.
- For information about optional accessories, refer to the "Digital Camera Accessory System".
- If any accessories are lost, customers should contact Panasonic's parts department at 1-800-833-9626 for further information about obtaining replacement parts.

<p>1</p>  <p>DMW-BCK7PP</p>	<p>2</p>  <p>VSK0768</p>
<p>3</p> 	<p>DMC-SZ1 DMC-SZ02 K1HY08YY0025</p> <p>DMC-FH8 K1HY08YY0015</p>
<p>4</p> 	<p>DMC-SZ1 K1HY08YY0026</p>
<p>5</p>  <p>VFF0940</p>	<p>6</p>  <p>VFC4297</p>

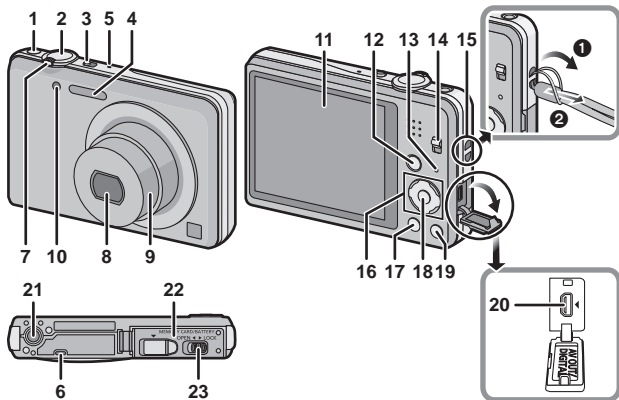
Names and Functions of Main Parts


DMC-SZ1

DMC-SZ02



DMC-FH8



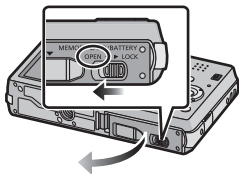
- 1 Motion picture button
- 2 Shutter button
- 3 Camera ON/OFF switch
- 4 Flash
- 5 Microphone
- 6 Speaker
 - Be careful not to cover the speaker with your finger. Doing so may make sound difficult to hear.
- 7 Zoom lever
- 8 Lens
- 9 Lens barrel
- 10 Self-timer indicator
AF Assist Lamp
- 11 LCD monitor
- 12 [MODE] button
- 13 Charging lamp
- 14 REC/PLAY switch
- 15 Strap eyelet
 - Be sure to attach the strap when using the camera to ensure that you will not drop it.
- 16 Cursor buttons
- 17 [DISP.] button
- 18 [MENU/SET] button
- 19 [Q.MENU][/↵] (Delete/Cancel) button
- 20 [AV OUT/DIGITAL] socket
- 21 Tripod receptacle
- 22 Card/Battery door
- 23 Release lever

Inserting and Removing the Card (optional)/the Battery

- Check that this unit is turned off.
- We recommend using a Panasonic card.

1 Slide the release lever in the direction of the arrow and open the card/battery door.

- Always use genuine Panasonic batteries (DMW-BCK7PP).
- If you use other batteries, we cannot guarantee the quality of this product.

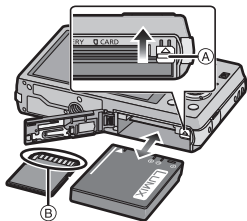


2 **Battery:** Being careful about the battery orientation, insert all the way until you hear a locking sound and then check that it is locked by lever (A). Pull the lever (A) in the direction of the arrow to remove the battery.

Card: Push it securely all the way until you hear a “click” while being careful about the direction in which you insert it.

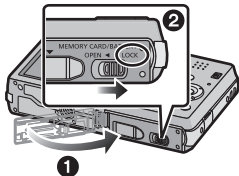
To remove the card, push the card until it clicks, then pull the card out upright.

(B): Do not touch the connection terminals of the card.



3 **1:** Close the card/battery door.

2: Slide the release lever in the direction of the arrow.



Note

- Keep the Memory Card out of reach of children to prevent swallowing.

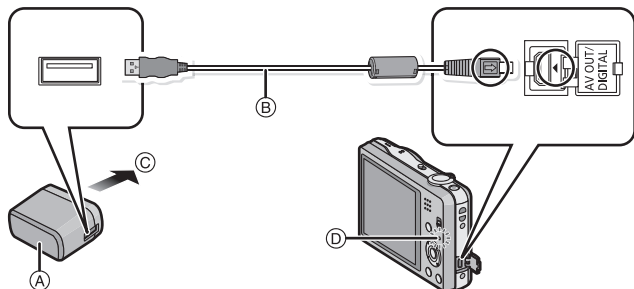
Charging the Battery

Use the dedicated AC adaptor (supplied), USB connection cable (supplied) and battery.

- The battery is not charged when the camera is shipped. Charge the battery before use.
- Charge the battery with the AC adaptor (supplied) indoors [10 °C to 30 °C (50 °F to 86 °F)].

- Charge the battery only when it is inserted in the camera.
- Check that this unit is turned off.

Connect the AC adaptor (A) (supplied) and this camera with the USB connection cable (B) (supplied), and insert the AC adaptor (A) (supplied) into the power outlet.



© To power outlet

- Do not use any other USB connection cables except the supplied one. Use of cables other than the supplied USB connection cable may cause a malfunction.
- Do not use any other AC adaptors except the supplied one.

■ About the charging lamp (D)

On: Charging.

Off: Charging has completed. (Charging time: Approx. 180 min)

■ About batteries that you can use with this unit

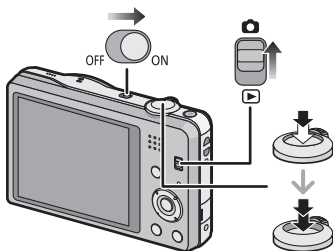
The battery that can be used with this unit is DMW-BCK7PP.

Sequence of operations

1 Slide the REC/PLAY switch to [📷] and then turn the camera on.

- The clock is not set when the camera is shipped. Set the date and time before using the camera.

2 Press the shutter button halfway to focus and then press it fully to take the picture.



■ Selecting the Recording Mode

Press [MODE] to select the Recording Mode.

fA: Take pictures with automatic settings.

📷: Take pictures with your own settings.

MINI: Take pictures to make them look like a diorama. (also known as Tilt Shift Focus)

SCN: Take pictures according to scene.

■ Recording Motion Pictures

Start recording by pressing the motion picture button.

- Stop the recording by pressing the motion picture button again.
- Maximum time to record motion pictures continuously is 29 minutes 59 seconds. The maximum available recording time continuously is displayed on the screen.

■ Setting the Menu

Press [MENU/SET] to display the menu screen to change the recording function, camera settings, and other settings.

■ Playing Back Pictures ([Normal Play])

Slide the REC/PLAY switch to [▶].

- Press ◀ or ▶ to select the picture.

■ Deleting Pictures

Select the picture, and then press [🗑️/↶].

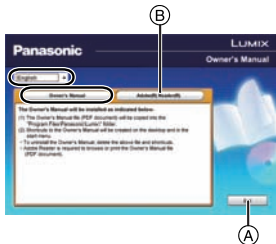
- Confirmation screen is displayed. Picture is deleted by selecting [Yes].

Reading the Owner's Manual (PDF format)

More detailed instructions on the operation of this camera are contained in "Owner's Manual for advanced features (PDF format)" in the supplied CD-ROM. Install it on your PC to read it.

■ For Windows

- 1** Turn the PC on and insert the CD-ROM containing the Owner's Manual (supplied).
 - 2** Click the [Owner's Manual].
 - 3** Select the desired language and then click [Owner's Manual] to install.
- (A) To return to the install menu.
- 4** Double-click the "Owner's Manual" shortcut icon on the desktop.



■ When the Owner's Manual (PDF format) will not open

You will need Adobe Acrobat Reader 5.0 or later, or Adobe Reader 7.0 or later to browse or print the Owner's Manual (PDF format).

Insert the CD-ROM containing the Owner's Manual (supplied), click (B) and then follow the messages on the screen to install.

(Compatible OS: Windows XP SP3/Windows Vista SP2/Windows 7)

- You can download and install a version of Adobe Reader that you can use with your OS from the following website.

<http://get.adobe.com/reader/otherversions/>

Installing supplied software

- The supplied CD-ROM includes the following software.
 - PHOTOfunSTUDIO 8.0 SE (Windows XP/Vista/7)
 - LoiLoScope 30-day full trial version (Windows XP/Vista/7)
(This will only install a shortcut to the trial version download site.)
- Before inserting the CD-ROM, close all running applications.

1

Check the environment of your PC.

- **Operating environment of "PHOTOfunSTUDIO 8.0 SE"**

- OS:

- Windows® XP (32bit) SP3,

- Windows Vista® (32bit) SP2,

- Windows® 7 (32bit/64bit) and SP1

- CPU:

- Pentium® III 500 MHz or higher (Windows® XP),

- Pentium® III 800 MHz or higher (Windows Vista®),

- Pentium® III 1 GHz or higher (Windows® 7)

- Display:

- 1024×768 pixels or more (1920×1080 pixels or more recommended)

- RAM:

- 512 MB or more (Windows® XP/Windows Vista®),

- 1 GB or more (Windows® 7 32bit),

- 2 GB or more (Windows® 7 64bit)

- Free hard disk space:

- 450 MB or more for installing software

- Refer to the operating instructions of "PHOTOfunSTUDIO" (PDF) for further operating environment.

2

Insert the CD-ROM with the supplied software.

- When you insert the supplied CD-ROM, the install menu will start.

3

Click on the [Applications] on the install menu.

4

Click on the [Recommended Installation].

- Proceed with installation according to messages appearing on the screen.



Note

- The software compatible with your PC will be installed.
- "PHOTOfunSTUDIO" is not compatible with Mac.

Specifications

Digital Camera:

Information for your safety

Power Source:	DC 5.1 V
Power Consumption:	1.1 W (When recording) 0.6 W (When playing back)

Camera effective pixels	16,100,000 pixels	
Image sensor	1/2.33" CCD, total pixel number 16,600,000 pixels, Primary color filter	
Lens	DMC-SZ1 DMC-SZ02 Optical 10× zoom, f=4.5 mm to 45 mm (35 mm film camera equivalent: 25 mm to 250 mm)/F3.1 (Wide) to F5.9 (Tele)	
	DMC-FH8 Optical 5× zoom, f=4.3 mm to 21.5 mm (35 mm film camera equivalent: 24 mm to 120 mm)/F2.5 (Wide) to F6.4 (Tele)	
Image stabilizer	Optical method	
Focus range	Normal	DMC-SZ1 DMC-SZ02 50 cm (1.6 feet) (Wide)/1.5 m (4.9 feet) (Tele) to ∞ [9× is 2 m (6.6 feet) to ∞]
		DMC-FH8 50 cm (1.6 feet) (Wide)/1 m (3.3 feet) (Tele) to ∞
	Macro/ Intelligent auto/ Motion picture	DMC-SZ1 DMC-SZ02 5 cm (0.16 feet) (Wide)/1.5 m (4.9 feet) (Tele) to ∞ [9× is 2 m (6.6 feet) to ∞]
		DMC-FH8 5 cm (0.16 feet) (Wide)/1 m (3.3 feet) (Tele) to ∞
Scene Mode	There may be differences in the above settings.	
Shutter system	Electronic shutter+Mechanical shutter	

Minimum Illumination	DMC-SZ1 DMC-SZ02 Approx. 10 lx (when i-low light is used, the shutter speed is 1/30th of a second)
	DMC-FH8 Approx. 8 lx (when i-low light is used, the shutter speed is 1/30th of a second)
Shutter speed	8 seconds to 1/1600th of a second
Exposure (AE)	Auto (Program AE)
Metering mode	Multiple
LCD monitor	3.0" TFT LCD (4:3) (Approx. 230,000 dots) (field of view ratio about 100%)
Microphone	Monaural
Speaker	Monaural
Recording media	Built-in Memory (Approx. 70 MB)/SD Memory Card/ SDHC Memory Card/SDXC Memory Card
Recording file format	
Still Picture	JPEG (based on "Design rule for Camera File system", based on "Exif 2.3" standard)/DPOF corresponding
Motion pictures	MP4
Audio compression format	AAC
Interface	
Digital	"USB 2.0" (High Speed)
Analog video	NTSC
Audio	Audio line output (monaural)
Terminal	
[AV OUT/DIGITAL]	Dedicated jack (8 pin)
Dimensions (excluding the projecting parts)	DMC-SZ1 DMC-SZ02 Approx. 99.0 mm (W)×59.4 mm (H)×21.0 mm (D) [3.9"(W)×2.4"(H)×0.9"(D)]
	DMC-FH8 Approx. 96.0 mm (W)×57.1 mm (H)×19.4 mm (D) [3.78"(W)×2.25"(H)×0.77"(D)]

Mass (weight)	DMC-SZ1 DMC-SZ02 Approx. 131 g/0.29 lb (with card and battery) Approx. 114 g/0.25 lb (excluding card and battery)
	DMC-FH8 Approx. 123 g/0.28 lb (with card and battery) Approx. 106 g/0.24 lb (excluding card and battery)
Operating temperature	0 °C to 40 °C (32 °F to 104 °F)
Operating humidity	10%RH to 80%RH
Language select	[ENGLISH]/[ESPAÑOL]

AC Adaptor (Panasonic VSK0768):

Information for your safety

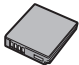


Input:	~ 110 V to 240 V, 50/60 Hz, 0.2 A
Output:	=== 5 V, 800 mA

Battery Pack (lithium-ion) (Panasonic DMW-BCK7PP):

Information for your safety

Voltage/capacity:	3.6 V/680 mAh
--------------------------	---------------

Digital Camera Accessory System

Accessory#	Illustration	Description
DMW-BCK7		Battery Pack
DMW-AVC1		AV Cable*
RP-SDU64GE1K RP-SDU32GU1K RP-SDU16GU1K RP-SDU08GU1K RP-SDU04GU1K		Class 10 64 GB SDXC Memory Card Class 10 32 GB SDHC Memory Card Class 10 16 GB SDHC Memory Card Class 10 8 GB SDHC Memory Card Class 10 4 GB SDHC Memory Card
RP-SDL16GU1K RP-SDL08GU1K RP-SDL04GU1K RP-SDL02GU1K		Class 4 16 GB SDHC Memory Card Class 4 8 GB SDHC Memory Card Class 4 4 GB SDHC Memory Card Class 4 2 GB SD Memory Card

Product numbers correct as of January 2012. These may be subject to change.

* **DMC-SZ02** **DMC-FH8** only

• NOTE: Accessories and/or model numbers may vary between countries. Consult your local dealer.

Digital Camera Accessory Order Form

Please photocopy this form when placing an order.

1. Digital Camera Model # _____

2. Items Ordered

Accessory #	Description	Price Each	Quantity	Total Price
Shipping & Handling				\$6.95
Subtotal				
Your State & Local Sales Tax				
Total				

3. Method of payment (check one)

- American Express
 VISA Credit Card # _____
 MasterCard Expiration Date _____
 Discover Customer Signature _____

(Please do not send cash)

4. Shipping information (UPS delivery requires complete street address)

Ship To:

Mr.

Mrs.

Ms.

First _____ Last _____

Phone#:

Day () _____

Street Address _____

Night () _____

City _____ State _____ Zip _____

TO OBTAIN ANY OF OUR DIGITAL CAMERA ACCESSORIES YOU CAN DO ANY OF THE FOLLOWING:

VISIT YOUR LOCAL PANASONIC DEALER

OR

CALL PANASONIC'S ACCESSORY ORDER LINE AT 1-800-332-5368

[6 AM-6 PM M-F, PACIFIC TIME]

OR

MAIL THIS ORDER TO: PANASONIC NATIONAL PARTS CENTER

20421 84th Ave S., Kent, WA 98032

Limited Warranty (ONLY FOR U.S.A. AND PUERTO RICO)

**Panasonic Consumer Marketing Company of North America,
Division of Panasonic Corporation of North America**
One Panasonic Way, Secaucus, New Jersey 07094

Panasonic Digital Still Camera Products Limited Warranty

Limited Warranty Coverage (For USA and Puerto Rico Only)

If your product does not work properly because of a defect in materials or workmanship, Panasonic Consumer Marketing Company of North America (referred to as "the warrantor") will, for the length of the period indicated on the chart below, which starts with the date of original purchase ("warranty period"), at its option either (a) repair your product with new or refurbished parts, (b) replace it with a new or a refurbished equivalent value product, or (c) refund your purchase price. The decision to repair, replace or refund will be made by the warrantor.

Product or Part Name	Parts	Labor
Digital Still Camera	1 year	1 year
SD Memory Cards, Rechargeable Battery Pack (defective exchange)	90 days	Not Applicable

During the "Labor" warranty period there will be no charge for labor. During the "Parts" warranty period, there will be no charge for parts. This Limited Warranty excludes both parts and labor for non-rechargeable batteries, antennas, and cosmetic parts (cabinet). This warranty only applies to products purchased and serviced in the United States or Puerto Rico. This warranty is extended only to the original purchaser of a new product which was not sold "as is".

Mail-In Service

For assistance in the U.S.A. and Puerto Rico in obtaining repairs, please ship the product prepaid to:

Panasonic Exchange Center
4900 George McVay Drive
Suite B
McAllen, TX 78503
panacare@us.panasonic.com

When shipping the unit, carefully pack, include all supplied accessories listed in the Owner's Manual, and send it prepaid, adequately insured and packed well in a carton box. When shipping Lithium Ion batteries please visit our Web Site at www.panasonic.com/BatteryHandling as Panasonic is committed to providing the most up to date information. Include a letter detailing the complaint, a return address and provide a daytime phone number where you can be reached. A valid registered receipt is required under the Limited Warranty.

IF REPAIR IS NEEDED DURING THE WARRANTY PERIOD, THE PURCHASER WILL BE REQUIRED TO FURNISH A SALES RECEIPT/PROOF OF PURCHASE INDICATING DATE OF PURCHASE, AMOUNT PAID AND PLACE OF PURCHASE. CUSTOMER WILL BE CHARGED FOR THE REPAIR OF ANY UNIT RECEIVED WITHOUT SUCH PROOF OF PURCHASE.

Limited Warranty Limits And Exclusions

This warranty ONLY COVERS failures due to defects in materials or workmanship, and DOES NOT COVER normal wear and tear or cosmetic damage. The warranty ALSO DOES NOT COVER damages which occurred in shipment, or failures which are caused by products not supplied by the warrantor, or failures which result from accidents, misuse, abuse, neglect, mishandling, misapplication, alteration, faulty installation, set-up adjustments, misadjustment of consumer controls, improper maintenance, power line surge, lightning damage, modification, introduction of sand, humidity or liquids, commercial use such as hotel, office, restaurant, or other business or rental use of the product, or service by anyone other than a Factory Service Center or other Authorized Servicer, or damage that is attributable to acts of God.

THERE ARE NO EXPRESS WARRANTIES EXCEPT AS LISTED UNDER "LIMITED WARRANTY COVERAGE".

THE WARRANTOR IS NOT LIABLE FOR INCIDENTAL OR CONSEQUENTIAL DAMAGES RESULTING FROM THE USE OF THIS PRODUCT, OR ARISING OUT OF ANY BREACH OF THIS WARRANTY.

(As examples, this excludes damages for lost time, travel to and from the servicer, loss of or damage to media or images, data or other memory or recorded content. The items listed are not exclusive, but for illustration only.)

ALL EXPRESS AND IMPLIED WARRANTIES, INCLUDING THE WARRANTY OF MERCHANTABILITY, ARE LIMITED TO THE PERIOD OF THE LIMITED WARRANTY.

Some states do not allow the exclusion or limitation of incidental or consequential damages, or limitations on how long an implied warranty lasts, so the exclusions may not apply to you.

This warranty gives you specific legal rights and you may also have other rights which vary from state to state. If a problem with this product develops during or after the warranty period, you may contact your dealer or Service Center. If the problem is not handled to your satisfaction, then write to the warrantor's Consumer Affairs Department at the addresses listed for the warrantor.

PARTS AND SERVICE, WHICH ARE NOT COVERED BY THIS LIMITED WARRANTY, ARE YOUR RESPONSIBILITY.

Customer Services Directory (United States and Puerto Rico)

Obtain Product Information and Operating Assistance; locate your nearest Dealer or Service Center; purchase Parts and Accessories; or make Customer Service and Literature requests by visiting our Web Site at:

<http://www.panasonic.com/help>

or, contact us via the web at:

<http://www.panasonic.com/contactinfo>

You may also contact us directly at:

1-800-211-PANA (7262)

Monday-Friday 9am-9pm, Saturday-Sunday 10am-7pm EST

For hearing or speech impaired TTY users, TTY: 1-877-833-8855

Accessory Purchases (United States and Puerto Rico)

Purchase Parts, Accessories and Instruction Books online for all Panasonic Products by visiting our Web Site at:

<http://www.pstc.panasonic.com>

Or, send your request by E-mail to:

npcparts@us.panasonic.com

You may also contact us directly at:

1-800-332-5368 (Phone) 1-800-237-9080 (Fax Only)

(Monday-Friday 9am-9pm EST)

Panasonic National Parts Center

20421 84th Ave S., Kent, WA 98032

(We accept Visa, MasterCard, Discover Card, American Express)

For hearing or speech impaired TTY users, TTY: 1-866-605-1277

As of January 2012

- SDXC Logo is a trademark of SD-3C, LLC.
- QuickTime and the QuickTime logo are trademarks or registered trademarks of Apple Inc., used under license therefrom.
- Mac and Mac OS are trademarks of Apple Inc., registered in the U.S. and other countries.
- Windows and Windows Vista are either registered trademarks or trademarks of Microsoft Corporation in the United States and/or other countries.
- This product uses "DynaFont" from DynaComware Corporation. DynaFont is a registered trademark of DynaComware Taiwan Inc.
- Other names of systems and products mentioned in these instructions are usually the registered trademarks or trademarks of the manufacturers who developed the system or product concerned.



This product is licensed under the AVC patent portfolio license for the personal and non-commercial use of a consumer to (i) encode video in compliance with the AVC Standard ("AVC Video") and/or (ii) decode AVC Video that was encoded by a consumer engaged in a personal and non-commercial activity and/or was obtained from a video provider licensed to provide AVC Video. No license is granted or shall be implied for any other use. Additional information may be obtained from MPEG LA, LLC. See <http://www.mpegla.com>.

Panasonic Consumer Marketing Company of North America,
Division of Panasonic Corporation of North America

One Panasonic Way, Secaucus, NJ 07094

© Panasonic Corporation 2012

Printed in China

Download from [Www.Somanuals.com](http://www.Somanuals.com). All Manuals Search And Download.

Free Manuals Download Website

<http://myh66.com>

<http://usermanuals.us>

<http://www.somanuals.com>

<http://www.4manuals.cc>

<http://www.manual-lib.com>

<http://www.404manual.com>

<http://www.luxmanual.com>

<http://aubethermostatmanual.com>

Golf course search by state

<http://golfingnear.com>

Email search by domain

<http://emailbydomain.com>

Auto manuals search

<http://auto.somanuals.com>

TV manuals search

<http://tv.somanuals.com>