

Installation Manual

PLEASE READ BEFORE USE AND SAVE.

This handset is an accessory cordless handset, for use with Panasonic base units KX-TG5200C/KX-TG5202C/KX-TG5230C/KX-TG5240C/KX-FPG391C. This installation manual only describes the steps necessary to start up the handset. Please read the base unit operating instructions for further details.

Accessories (included)

- | | |
|--|---|
| <input type="checkbox"/> Charger Unitone | <input type="checkbox"/> Batteryone |
| <input type="checkbox"/> Handset Cover.one | <input type="checkbox"/> Belt Clipone |

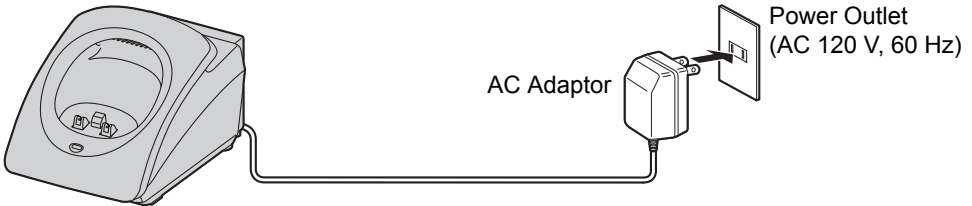
For assistance, please call 1-800-561-5505 or visit us at www.panasonic.ca

Contents

Installation	1	Optional Headset	5
Registration	3	Important Information/ Safety Instructions	6
Belt Clip	4	Warranty	8
Wall Mounting	4		

Installation

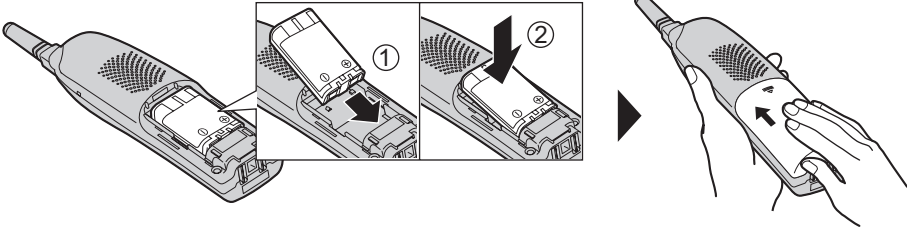
Connecting the Charger unit



- USE ONLY WITH Panasonic AC ADAPTOR KX-TCA1.
- The AC adaptor must remain connected at all times. (It is normal for the adaptor to feel warm during use.)


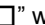
Installing the battery

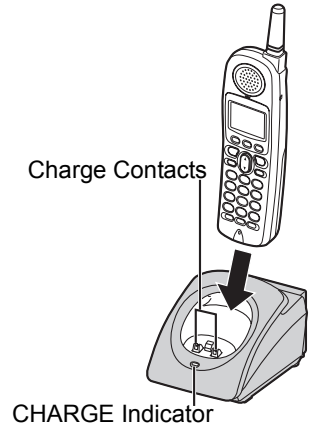
Insert the battery (①) and press it down until it snaps into the compartment (②). Close the cover.



Charging the battery

Place the handset on the charger and charge for **6 hours** before initial use. Repeat charging will require approximately the same amount of charging time (6 hours) if the battery is depleted completely.

- The unit beeps once, the CHARGE indicator lights and “Charging” is displayed.
- When the battery is fully charged, “Charge completed” is displayed if there are no new calls in the Caller List.
- Recharge the battery when:
 - “Recharge battery” is displayed on the handset,
 - “” flashes, or
 - the handset beeps intermittently while it is in use.
- If the battery has been discharged, the handset will display “Charge for 6 HRS” and “” when you place the handset on the charger. The handset will not work unless the battery is charged. Continue charging.



Handset battery information

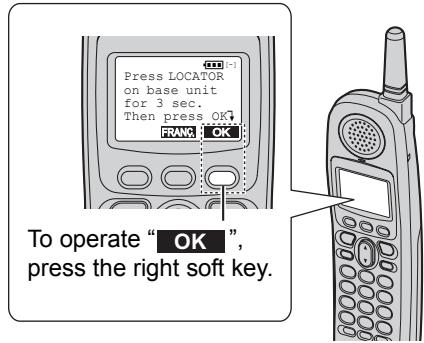
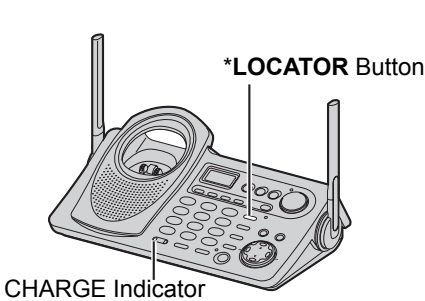
After your Panasonic battery is fully charged, you can expect the following performance:

Operation	Operating time
While in use (TALK)	Up to 5 hours
While not in use (Standby)	Up to 11 days
While using the Clarity Booster feature	Up to 3 hours

- **Clean the charge contacts of the handset and the charger with a soft, dry cloth once a month. Clean more often if the unit is subject to grease, dust or high humidity, otherwise, the battery may not charge properly.**

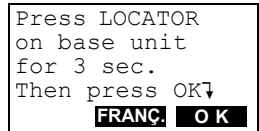
Registration

This cordless handset must be registered to a KX-TG5200C/KX-TG5202C/KX-TG5230C/KX-TG5240C/KX-FPG391C base unit. The handset will be assigned the extension number at registration. Only one handset can be registered at a time. **Charge the battery fully. Make sure the base unit and the other handsets are not being used. Have both the handset and base unit nearby during registration.**



- Base unit model shown here is KX-TG5240C.
- * The location of the **LOCATOR** button varies by base unit model.
KX-TG5200C/KX-TG5202C: **LOCATOR** [↓], [↓], [↓], [↓] or [↓/↓]
KX-TG5230C/KX-TG5240C/KX-FPG391C: [**LOCATOR/INTERCOM/TRANSFER**]

The handset display shows the instructions as shown on the right.



1 Base unit: Press and hold the *LOCATOR button for 3 seconds.

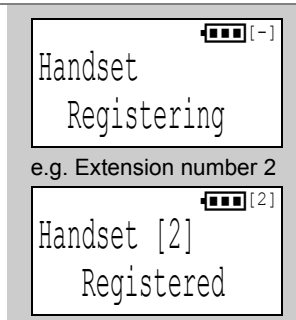
- The CHARGE indicator flashes. After the CHARGE indicator starts flashing, the rest of the procedure must be completed within 1 minute.
- On the KX-FPG391C, "HS REGISTRATION" is displayed.

2 Handset:

(1) Press the soft key (**OK**).

(2) Wait until a long beep sounds and the display shows the new extension number.

- Registration is complete.



- The registered number "[1]" to "[4]" is shown on the top right of the display.
- You can stop registration by pressing [**OFF**] on the handset and pressing the ***LOCATOR** button on the base unit.
- If you try to register this handset to the KX-TG6500C base unit, "Wrong handset Refer to manual" is displayed. The base units for this handset are mentioned above.

To cancel the handset registration, please see your base unit Operating Instructions.

Selecting the display language

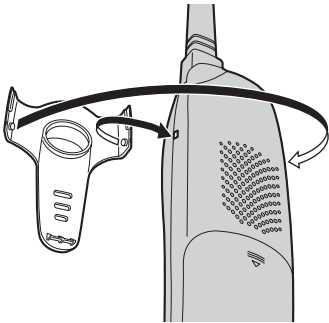
You can select either "English" or "Français" (French) as the display language. The factory preset is "English".

Press **[MENU]** ➔ **[▼]** or **[▲]** to select "Initial setting" ➔ Soft key (**SELECT**) ➔ ➔ **[▼]** or **[▲]** to select "Change language" ➔ Soft key (**SELECT**) ➔ Soft key (**FRANÇ.**) to select "Français", or soft key (**ENGLISH**) to select "English" ➔ Soft key (**SAUV.**) for French, or soft key (**SAVE**) for English ➔ **[OFF]**

Belt Clip

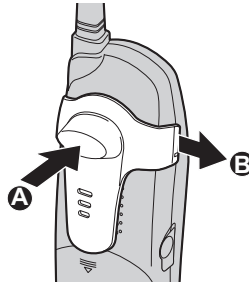
You can hang the handset on your belt or pocket using the included belt clip.

To attach the belt clip



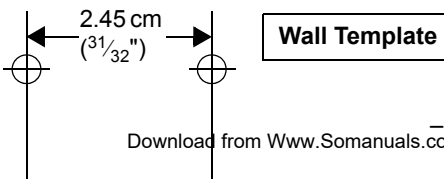
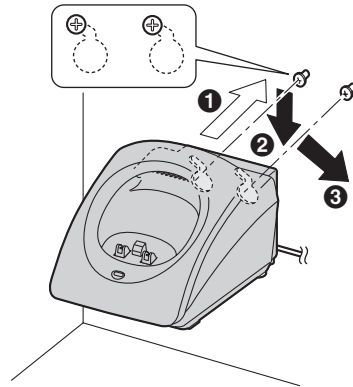
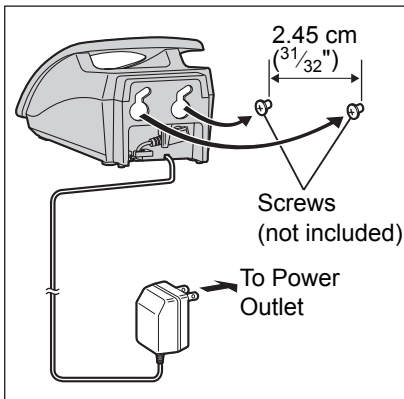
To remove the belt clip

While pressing the top of the clip (**A**), pull the right edge in the direction of the arrow (**B**).



Wall Mounting

The charger can be wall mounted. Connect the AC adaptor. Install screws using the wall template (see below). Mount the charger (**1**). Slide it down (**2**), then slide down to the right (**3**) until it is secured.

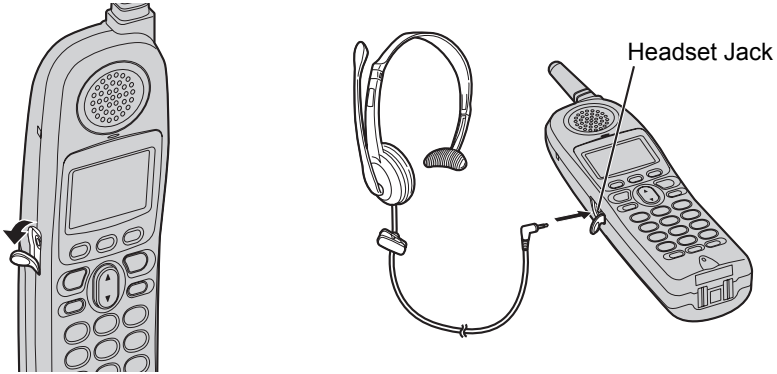


Optional Headset

Connecting an optional headset to the handset allows hands-free phone conversation. Please only use a Panasonic KX-TCA86, KX-TCA91 or KX-TCA92 headset.

Connecting an optional headset

Open the headset jack cover and insert the headset plug into the headset jack as shown below.



- Headset sold separately. Model shown here is KX-TCA86.

Important Information/Safety Instructions

NOTICE:

Operation is subject to the following two conditions: (1) this device may not cause interference, and (2) this device must accept any interference, including interference that may cause undesired operation of the device.

Privacy of communications may not be ensured when using this telephone.

Operating near 5.8 GHz electrical appliances may cause interference. Move away from the electrical appliances.

The term "IC:" before the radio certification number only signifies that Industry Canada radio technical specifications were met.

Take special care to follow the safety suggestions listed below.

Safety

- 1) The unit should be connected to a power supply only of the type described in the operating instructions or as marked on the unit.
- 2) When left unused for a long period of time, the unit should be unplugged from the household AC outlet.

Installations

Environment

- 1) Do not use this unit near water — for example, near a bathtub, washbowl, sink, etc. Damp basements should also be avoided.
- 2) The unit should be kept away from heat sources such as radiators, kitchen ranges, etc. It also should not be placed in rooms where the temperature is less than 5°C (41°F) or greater than 40°C (104°F).
- 3) The AC adaptor is used as the main power source. Ensure that the AC outlet is located/installed near the unit and is easily accessible.

Placement

- 1) Do not place heavy objects on top of this unit.
- 2) Care should be taken so that objects do not fall onto, and liquids are not spilled into, the unit. Do not subject this unit to excessive smoke, dust, mechanical vibration or shock.
- 3) Place the unit on a flat surface.

For best performance

- 1) If noise prevents the conversation from being understood on the handset, approach the base unit to lessen the noise.
- 2) The handset should be used at the HIGH volume setting when the reception is poor.
- 3) The handset should be fully recharged on the charger when "Recharge battery" is displayed and/or "■" flashes on the display.
- 4) The handset antenna should not be touched during use because of its high sensitivity.
- 5) The maximum calling distance may be shortened when the unit is used in the following places: Near obstacles such as hills, tunnels, underground, near metal objects such as wire fences, etc.

Medical

Consult the manufacturer of any personal medical devices, such as pacemakers or hearing aids, to determine if they are adequately shielded from external RF (radio frequency) energy. (The unit operates in the frequency range of 5760 MHz to 5840 MHz, and the power output level can range from 0.25 watts to 0.5 watts.) Do not use the unit in health care facilities if any regulations posted in the area instruct you not to do so. Hospitals or health care facilities may be using equipment that could be sensitive to external RF (radio frequency) energy.

A nickel metal hydride battery that is recyclable powers the product you have purchased. Please call 1-800-8-BATTERY for information on how to recycle this battery.



WARNING:

TO PREVENT FIRE OR SHOCK HAZARD, DO NOT EXPOSE THIS PRODUCT TO RAIN OR ANY TYPE OF MOISTURE.

If there is any trouble, disconnect the unit from the telephone line and connect a known working phone. If the known working phone operates properly, have your unit repaired by one of the specified authorized Panasonic Factory Servicentres. If the known working phone does not operate properly, consult your telephone company.

Panasonic Canada Inc.

5770 Ambler Drive, Mississauga, Ontario L4W 2T3

PANASONIC PRODUCT—LIMITED WARRANTY

Panasonic Canada Inc. warrants this product to be free from defects in material and workmanship and agrees to remedy any such defect for a period as stated below from the date of original purchase.

Telephone Accessory/Product
FRS (Family Radio Service) Product

—One (1) year, parts and labour
—One (1) year, parts and labour

LIMITATIONS AND EXCLUSIONS

This warranty does not apply to products purchased outside Canada or to any product which has been improperly installed, subjected to usage for which the product was not designed, misused or abused, damaged during shipping, or which has been altered or repaired in any way that affects the reliability or detracts from the performance, nor does it cover any product which is used commercially. Dry cell batteries are also excluded from coverage under this warranty. Rechargeable batteries are warranted for ninety (90) days from date of original purchase.

This warranty is extended to the original end user purchaser only. A purchase receipt or other proof of date of original purchase is required before warranty service is performed.

THIS EXPRESS, LIMITED WARRANTY IS IN LIEU OF ALL OTHER WARRANTIES, EXPRESS OR IMPLIED, EXCLUDING ANY IMPLIED WARRANTIES OF MERCHANTABILITY OR FITNESS FOR A PARTICULAR PURPOSE. IN NO EVENT WILL PANASONIC CANADA INC. BE LIABLE FOR ANY SPECIAL, INDIRECT OR CONSEQUENTIAL DAMAGES.

In certain instances, some jurisdictions do not allow the exclusion or limitation of incidental or consequential damages, or the exclusion of implied warranties, so the above limitations and exclusions may not be applicable.

WARRANTY SERVICE

For product operation and information assistance, please contact your Dealer or our Customer Care Centre at:

Telephone #: (905) 624-5505 Fax #: (905) 238-2360 Web: www.panasonic.ca

For product repairs, please contact one of the following:

- Your Dealer who will inform you of an authorized Servicentre nearest you.
- Our Customer Care Centre at (905) 624-5505 or www.panasonic.ca
- A Panasonic Factory Servicentre listed below:

Richmond, British Columbia

Panasonic Canada Inc.
12111 Riverside Way
Richmond, BC V6W 1K8
Tel: (604) 278-4211
Fax: (604) 278-5627

Mississauga, Ontario

Panasonic Canada Inc.
5770 Ambler Dr.
Mississauga, ON L4W 2T3
Tel: (905) 624-8447
Fax: (905) 238-2418

Calgary, Alberta

Panasonic Canada Inc.
6835-8th St. N. E.
Calgary, AB T2E 7H7
Tel: (403) 295-3955
Fax: (403) 274-5493

Lachine, Québec

Panasonic Canada Inc.
3075, rue Louis A. Amos
Lachine, QC H8T 1C4
Tel: (514) 633-8684
Fax: (514) 633-8020

IF YOU SHIP THE PRODUCT TO A SERVICENTRE

Carefully pack and send prepaid, adequately insured and preferably in the original carton. Include details of the defect claimed, and proof of date of original purchase.

Panasonic Canada Inc.

5770 Ambler Drive, Mississauga, Ontario L4W 2T3

© 2004 Panasonic Communications Co., Ltd. All Rights Reserved.

Free Manuals Download Website

<http://myh66.com>

<http://usermanuals.us>

<http://www.somanuals.com>

<http://www.4manuals.cc>

<http://www.manual-lib.com>

<http://www.404manual.com>

<http://www.luxmanual.com>

<http://aubethermostatmanual.com>

Golf course search by state

<http://golfingnear.com>

Email search by domain

<http://emailbydomain.com>

Auto manuals search

<http://auto.somanuals.com>

TV manuals search

<http://tv.somanuals.com>