

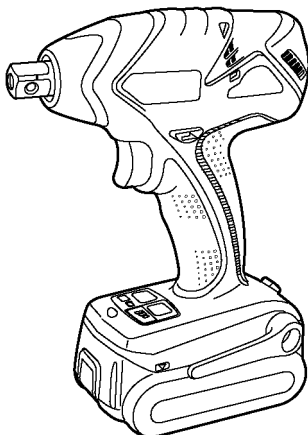
# Service Manual

Cordless Impact Driver

Model No. EY7541

North America

*Simplified*



Please file and use this manual together with the service manual for Model No. EY7540-X8, Order No. PTD0609X43CE.

## **⚠ WARNING**

This service information is designed for experienced repair technicians only and is not designed for use by the general public. It does not contain warnings or cautions to advise non-technical individuals of potential dangers in attempting to service a product. Products powered by electricity should be serviced or repaired only by experienced professional technicians. Any attempt to service or repair the product or products dealt with in this service information by anyone else could result in serious injury or death.

## **IMPORTANT SAFETY NOTICE**

There are special components used in this equipment which are important for safety. These parts are marked by **⚠** in the Schematic Diagrams, Circuit Board Diagrams, Exploded Views and Replacement Parts List. It is essential that these critical parts should be replaced with manufacturer's specified parts to prevent shock, fire or other hazards. Do not modify the original design without permission of manufacturer.

## TABLE OF CONTENTS

	PAGE	PAGE
1 Warning	2	
2 Specifications	2	
3 Exploded View and Replacement Parts List	3	

**Panasonic**<sup>®</sup>

© 2007 Matsushita Electric Works, Ltd. All rights reserved. Unauthorized copying and distribution is a violation of law.

# 1 Warning

## Caution:

- Pb free solder has a higher melting point than standard solder; Typically the melting point is 50 - 70°F (30 - 40°C) higher. Please use a soldering iron with temperature control and adjust it to 750 ± 20°F (400 ± 10°C). In case of using high temperature soldering iron, please be careful not to heat too long.
- Pb free solder will tend to splash when heated too high (about 1100°F / 600°C).

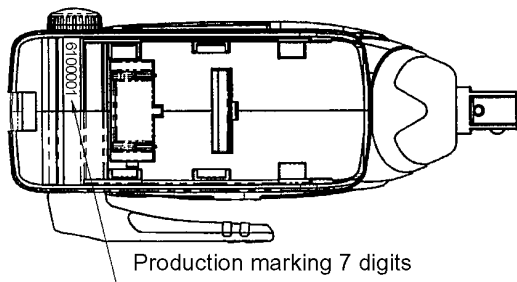
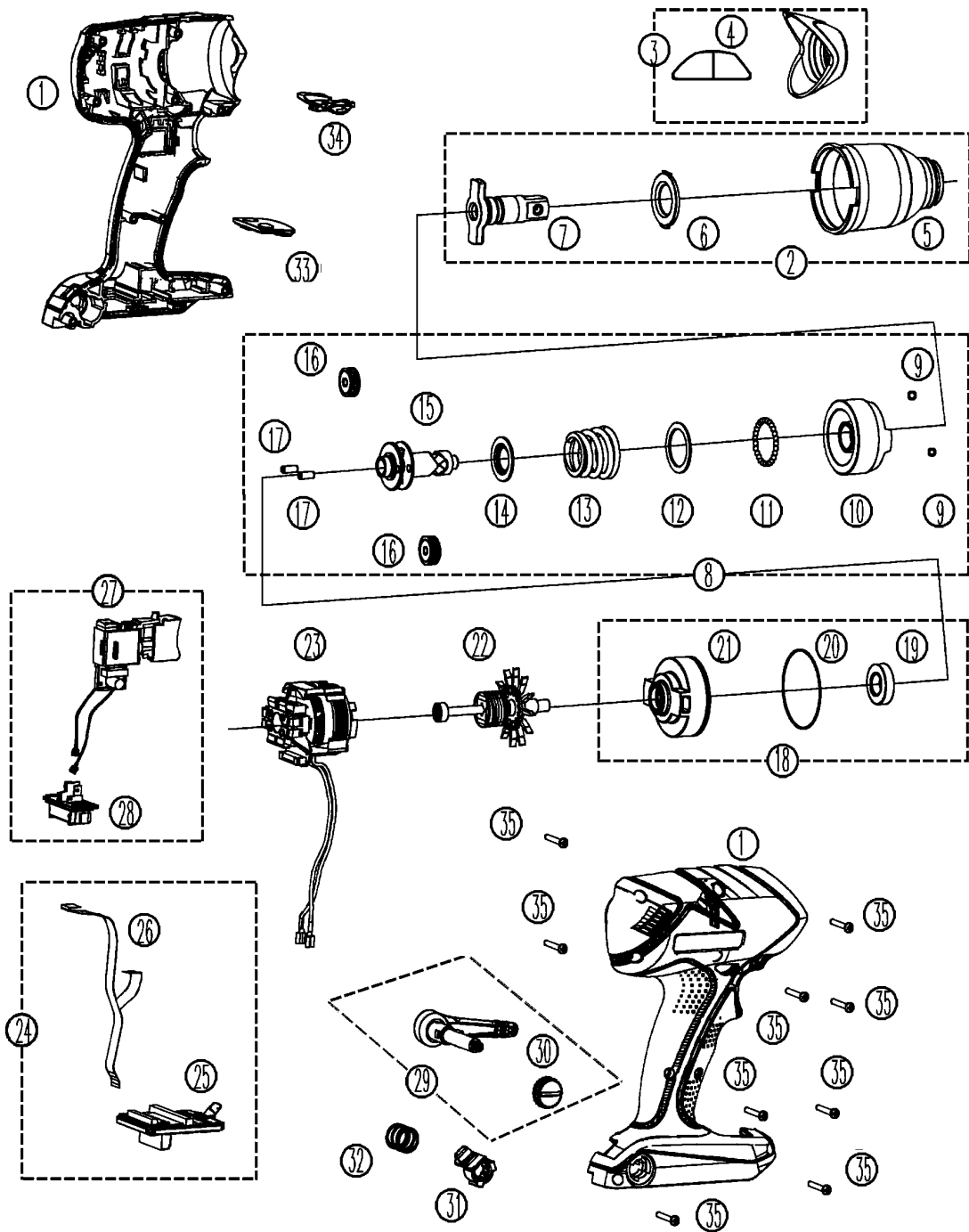
# 2 Specifications

## MAIN UNIT

Motor		14.4V DC
No load speed	Soft mode	0-1000/min (rpm)
	Medium mode	0-1400/min (rpm)
	Hard mode	0-2300/min (rpm)
Maximum torque		185Nm (1890kgf-cm, 1640in-lbs.)
Impact per minute	Soft mode	0-2000/min
	Medium mode	0-2800/min
	Hard mode	0-3000/min
Overall length		167mm (6-9/16")
Weight (with battery pack EY9L40)		1.5kg (3.3 lbs.)

# 3 Exploded View and Replacement Parts List

## 3.1. Exploded View



6 10 0001

Serial No.  
 Month  
 Year (last digit)

\*\* Battery Pack is available as an optional accessory. See the nearest sales dealer for details.  
 \*\*\* For replacement parts of charger, see the charger service manual.  
 Charger complete set is available as an optional accessory. See the nearest sales dealer for details.

## 3.2. Replacement Parts List

Safety	Ref. No.	Part No.	Part Name & Description	Quantity	Remarks
	1	WEY7541K3078	HOUSING AB SET	1	
	2	WEY7541K4058	FIXATION COVER ASSEMBLY	1	
	3	WEY7540K3107	NOSE PROTECTOR	1	
	4	WEY7540L0847	ADHESIVE TAPE	1	
	5	WEY7541L3137	FIXATION COVER	1	
	6	WEY6631K0867	SLIDER	1	
	7	WEY7541L1128	ANVIL	1	
	8	WEY7541L1067	DRIVING SHAFT ASSEMBLY	1	
	9	WEY7201L6966	STEEL BALL	2	(2PCS/PK)
	10	WEY7541L1378	HAMMER	1	
	11	WEY7300L6956	STEEL BALL	27	(27PCS/PK)
	12	WEY6505L0896	THRUST PLATE	1	
	13	WEY7541L0218	HAMMER SPRING	1	
	14	WEY6508L1146	SPRING FIXING PLATE	1	
	15	WEY7271L1067	DRIVING SHAFT	1	
	16	WEY6504L1357	PLANET GEAR	2	(2PCS/PK)
	17	WEY6506L1346	PIN	2	(2PCS/PK)
	18	WEY7540L0028	MOTOR MOUNTING PLATE ASSEMBLY	1	
	19	WEY7201L4956	BEARING	1	
	20	WEYT611L0967	O-RING	1	( $\phi$ 43.6*1.3)
	21	WEY7205L0037	MOTOR MOUNTING PLATE	1	
	22	WEY7540L1467	MOTOR ROTOR ASSEMBLY	1	
	23	WEY7540L1188	STATOR	1	
	24	WEY7540L2108	MODULE ASSEMBLY	1	
	25	WEY7540L2128	CONTROL PCB	1	
	26	WEY7540L2067	RIBBON CABLE	1	
	27	WEY7540K2007	SWITCH ASSEMBLY	1	[SH]
	28	WEY7540L2157	BATTERY TERMINAL BLOCK	1	
	29	WEY7542K3187	BELT HOOK SET	1	
	30	WEY7205K0257	BELT HOOK BOLT	1	
	31	WEY7540H0407	HOOK RELEASE LEVER	1	
	32	WEY7540L0167	SPRING FOR RELEASE LEVER	1	
	33	WEY7540K3338	OPERATION PANEL	1	
	34	WEY7540H3247	F/R SELECTOR HANDLE	1	
	35	WEY6230K9216	TORX TAPPING SCREW	9	K3*20
	-	WEY9633K7018	TOOL CASE	1	[SH]
	-	WEY7541K8108	OPERATING INSTRUCTIONS	1	[SH]

## Free Manuals Download Website

<http://myh66.com>

<http://usermanuals.us>

<http://www.somanuals.com>

<http://www.4manuals.cc>

<http://www.manual-lib.com>

<http://www.404manual.com>

<http://www.luxmanual.com>

<http://aubethermostatmanual.com>

Golf course search by state

<http://golfingnear.com>

Email search by domain

<http://emailbydomain.com>

Auto manuals search

<http://auto.somanuals.com>

TV manuals search

<http://tv.somanuals.com>