

PeerCall USB Adaptor



CONTENTS

CHAPTER 1: Welcome to USB Adaptor

1.1	Summary	3
1.2	Features	3
1.3	System Requirements	3

CHAPTER 2: How to use the USB Adaptor

2.1	Connect USB Adaptor to PC	4
2.2	Run PeerCall WIN	4
2.3	Switch between PeerCall & PSTN	4
2.4	Make calls through USB	4
2.5	Make calls through PSTN	4
2.6	Answer a call	4
2.7	Adjust options (Default channel)	5
2.8	Adjust Volume	5

CHAPTER 1

Welcome to PeerCall USB Adaptor

1.1 Summary

PeerCall USB Adaptor is a convenient, effective, and easy-to-use device for everyday voice communication. User can switch between an Internet phone (VoIP) and a regular phone simply by pressing “*” key. It provides not only the great convenience but big cost savings as well.

1.2 Features

1. Receive both PeerCall and PSTN calls.
2. PC-to-PC, Phone to Phone operation.
3. Plug-and-play installation, USB1.1 compatible, no need for sound card.
4. Echo cancellation, noise reduction.
5. Full duplex communication.

1.3 System Requirements

1. P II with 200 MHz CPU or better with USB interface.
2. 64MB of RAM.
3. 10MB or more hard disk space.
4. Operating System: Windows 2000/XP
5. Network: LAN, ADSL, ISDN, 33.6K modem or better
6. PeerCall WIN pre-installed

CHAPTER 2

How to use the PeerCall USB Adaptor

2.1 Connect USB Adaptor to PC

- ▣ Connect USB Adaptor to PC, POWER indicator will be on.
- ▣ Connect telephone line from the wall outlet to "LINE" port.
- ▣ Connect Phone set to "TEL" port.

2.2 Run PeerCall WIN

- ▣ PeerCall WIN shows a dialog indicate device is connected successfully.



2.3 Channels Switch

You can press "*" to switch PSTN channel to USB channel or switch USB channel to PSTN channel.

2.4 Make calls through USB

- ▣ Input number and call out:
 - Press "*" to change to USB channel, the "USB" indicator is on. Press PeerCall number on the phone keypad, this number will be shown on PeerCall WIN window, then press "#" to call out. When you hang-up, the USB Adaptor switch to PSTN channel automatically.

2.5 Make calls through PSTN (Phone to Phone)

Press the regular phone number, then press "#" to call out.

For example: to call 800-123-4567

Operation: Input the number 8001234567, then press "#" to call out.

2.6 Answer a call


When a call (can be either PeerCall or PSTN) comes in, the phone is ringing, pick up handset or press handfree key to answer the call.

2.7 Adjust options (default channel)

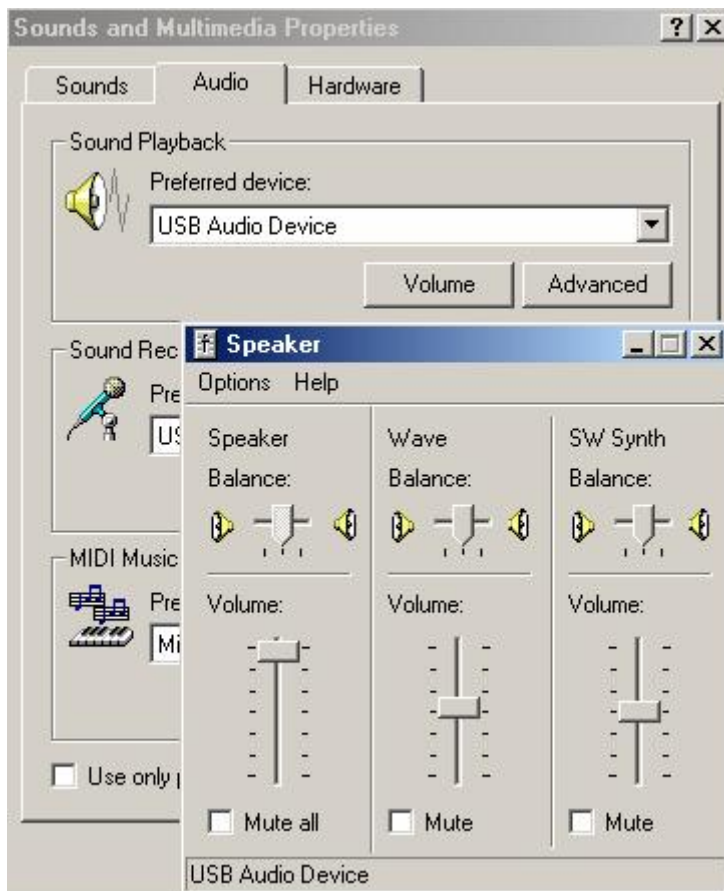
Set the default channel and sound card settings in the "Options", as shown:



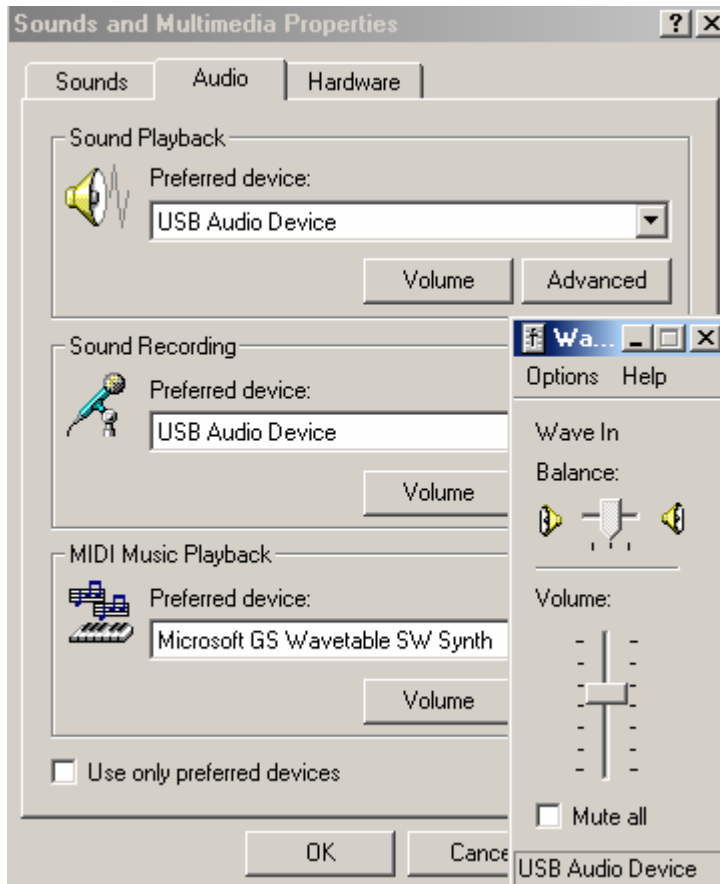
2.8 Adjust Volume

Please execute the "Control Panel->Sounds and Multimedia()->Audio", it shown as below:

Click Volume for sound Playback show "Speaker" dialog:



Click Volume for sound Recording show "Wave IN" dialog



Free Manuals Download Website

<http://myh66.com>

<http://usermanuals.us>

<http://www.somanuals.com>

<http://www.4manuals.cc>

<http://www.manual-lib.com>

<http://www.404manual.com>

<http://www.luxmanual.com>

<http://aubethermostatmanual.com>

Golf course search by state

<http://golfingnear.com>

Email search by domain

<http://emailbydomain.com>

Auto manuals search

<http://auto.somanuals.com>

TV manuals search

<http://tv.somanuals.com>