



by **Schneider** Electric

OPERATION/CONFIGURATION

Spectra® Mini IP Dome System



C3447M-B (8/09)

Contents

Important Notices.....	5
Legal Notice.....	5
Video Quality Caution.....	5
Open Source Software Notice.....	5
Welcome.....	6
Getting Started.....	6
Using a Web Browser.....	7
Accessing the Dome System.....	7
Home Page.....	8
Live Video Page Icons.....	8
Changing the Video Format.....	9
Changing the Image Rate/Quality.....	10
MJPEG Image Rate.....	10
MPEG-4 Image Quality.....	10
Alarms.....	11
Presets.....	11
Patterns.....	11
Auxiliary Controls.....	11
Using the Live Video Pane.....	12
Capturing a Still Image.....	12
Expanding the Video to Full Page.....	12
Opening the Video in an Independent Window.....	12
Using the Camera's PTZ Functions.....	12
Accessing the Camera Menus.....	13
Using Mouse and Keyboard Shortcuts.....	14
Receiving Audio.....	14
Transmitting Audio.....	15
Configuring Camera Settings.....	15
Settings Page.....	16
General Tab.....	16
Changing the Device Name.....	16
Changing the Language.....	16
Audio Settings.....	17
Reset to Factory Defaults.....	17
Network Tab.....	18
Changing the Host Name.....	18
Network Settings.....	18
Users Tab.....	19
Adding a New User Profile.....	19
Modifying a User Profile.....	20
Deleting a User Profile.....	20
Roles Tab.....	21
Creating a New Role.....	22
Modifying a Role.....	22
Deleting a Role.....	22

Edit Profile Page	23
Help Page	24
Log Off	24
Troubleshooting	24

List of Illustrations

1	Spectra Mini IP Login	7
2	Home Page	8
3	General Tab	16
4	Network Tab	18
5	Users Tab	19
6	Roles Tab	21
7	Edit Profile Page	23

Important Notices

LEGAL NOTICE

SOME PELCO EQUIPMENT CONTAINS, AND THE SOFTWARE ENABLES, AUDIO/VISUAL AND RECORDING CAPABILITIES, THE IMPROPER USE OF WHICH MAY SUBJECT YOU TO CIVIL AND CRIMINAL PENALTIES. APPLICABLE LAWS REGARDING THE USE OF SUCH CAPABILITIES VARY BETWEEN JURISDICTIONS AND MAY REQUIRE, AMONG OTHER THINGS, EXPRESS WRITTEN CONSENT FROM RECORDED SUBJECTS. YOU ARE SOLELY RESPONSIBLE FOR INSURING STRICT COMPLIANCE WITH SUCH LAWS AND FOR STRICT ADHERENCE TO ANY/ALL RIGHTS OF PRIVACY AND PERSONALTY. USE OF THIS EQUIPMENT AND/OR SOFTWARE FOR ILLEGAL SURVEILLANCE OR MONITORING SHALL BE DEEMED UNAUTHORIZED USE IN VIOLATION OF THE END USER SOFTWARE AGREEMENT AND RESULT IN THE IMMEDIATE TERMINATION OF YOUR LICENSE RIGHTS THEREUNDER.

VIDEO QUALITY CAUTION

FRAME RATE NOTICE REGARDING USER-SELECTED OPTIONS

Pelco systems are capable of providing high quality video for both live viewing and playback. However, the systems can be used in lower quality modes, which can degrade picture quality, to allow for a slower rate of data transfer and to reduce the amount of video data stored. The picture quality can be degraded by either lowering the resolution, reducing the picture rate, or both. A picture degraded by having a reduced resolution may result in an image that is less clear or even indiscernible. A picture degraded by reducing the picture rate has fewer frames per second, which can result in images that appear to jump or move more quickly than normal during playback. Lower frame rates may result in a key event not being recorded by the system.

Judgment as to the suitability of the products for users' purposes is solely the users' responsibility. Users shall determine the suitability of the products for their own intended application, picture rate and picture quality. In the event users intend to use the video for evidentiary purposes in a judicial proceeding or otherwise, users should consult with their attorney regarding any particular requirements for such use.

OPEN SOURCE SOFTWARE NOTICE

This product includes certain open source or other software originated from third parties that is subject to the GNU General Public License (GPL), GNU Library/Lesser General Public License (LGPL) and different and/or additional copyright licenses, disclaimers and notices.

The exact terms of GPL, LGPL and some other licenses are provided to you with this product. Please refer to the exact terms of the GPL and LGPL at www.fsf.org (Free Software Foundation) and www.opensource.org (Open Source Initiative) regarding your rights under said license. You may obtain a complete corresponding machine-readable copy of the source code of such software under the GPL or LGPL by sending your request to digitalsupport@pelco.com and the subject line should read Source Code Request. You will then receive a link in the e-mail for you to download the source code.

This offer is valid for a period of three (3) years from the date of the distribution of this product by Pelco.

Welcome

The Spectra® Mini IP dome system is accessible using a standard Web browser (Microsoft® Internet Explorer® or Mozilla® Firefox®). The IP dome system can also be used with an Endura® system as an Endura Enabled™ device or a third-party system with Pelco's API interface. If you are using one of these systems refer to the following information:

NOTES:

- Only use a cable modem router or a switch with a Dynamic Host Configuration Protocol (DHCP) server when installing the Spectra Mini IP dome system on a network. Refer to the installation manual shipped with the IP dome system for instructions.
- Do not use a hub in the network setup of the dome system.
- To secure access to the Spectra Mini IP dome system, place the dome behind a firewall when it is connected to a network.
- For optimum image quality and bandwidth efficiency, use the dome system as an Endura Enabled device or with an approved Pelco API interface.
- If the dome system is part of an Endura system, the graphical user interface will automatically discover the device and display it as a camera within the system manager. Refer to the documentation for the Endura System Manager.
- For a list of compatible API interfaces go to xdn.pelco.com and register as a new user by following the on-screen instructions.
- Network and processor bandwidth limitations may cause the video stream to pause or appear pixilated when an increased number of Web-interface users connect to the camera. Decrease the images per second (ips) of the Web-interface video streams to compensate for network/processor limitations.

For detailed instructions on configuring the dome system using WS5000 advanced system software, refer to the Endura WS5000 Advanced System Software manual.

Getting Started

You will need to install your Spectra Mini IP dome system before using this manual (refer to the installation manual supplied with the IP dome system). Once installed, apply power to the system. The system will complete a configuration sequence.

Using a Web Browser

The minimum system requirements to use a Web browser with the Spectra Mini IP dome system area as follows:

Processor: Intel® Pentium® 4 microprocessor, 1.6 GHz

Operating system: Microsoft® Windows® 98, Windows 2000, Windows XP (or later), or Mac® OS X 10.3.9 (or later)

Memory: 512 MB

Network interface card: 100 megabits (or greater)

Monitor: Minimum of 1024 x 768 resolution, 16- or 32-bit pixel color resolution

Web browser: Internet Explorer 5.5 (or later) or Firefox 1.5 (or later)

Software platform: Java runtime environment™ (JRE) 1.4.2 or higher. You must have JRE installed on your machine to view images. Download Java™ version J2SE JRE available on the resource disc that was shipped with the product, or go to www.java.com/en/download.

ACCESSING THE DOME SYSTEM

1. Open the Web browser.
2. Enter the IP address of the dome system in the browser's address bar. A login dialog box opens.

NOTE: If you do not know the IP address of the dome system, install the Pelco Device Utility software available on the CD shipped with the product. The utility will locate the assigned name, IP address, and media access control (MAC) address for the device.

3. Type **admin** (all lowercase) in the User ID and Password boxes (admin is the default value for these boxes).



Figure 1. Spectra Mini IP Login

4. Click Log In.

NOTE: For security purposes, be sure to change the password after you log on for the first time (refer to *Edit Profile Page* on page 23).

Home Page

Use the Home page to manage the way you view live video, access dome system menus, and call up presets, patterns, and auxiliary controls.



Figure 2. Home Page

LIVE VIDEO PAGE ICONS

- 1 Image Rate:** Selects the speed at which images are transmitted.
- 2 Video Format:** Selects the format in which the video is displayed.
- 3 Alarm Panel:** Indicates the status of the alarm set for the Spectra Mini unit. A red light indicates that the alarm is active, a green light indicates that the alarm is inactive.
- 4 Presets, Patterns, and Aux Control Panel:** Programs and calls up presets and patterns, and turns on and off auxiliary controls.
- 5 Video Settings Toolbar:** Accesses the buttons to adjust and control video settings.



Full Page Button: Scales the video to full page and hides all other controls.



Scalable Window Button: Opens the video in a scalable, independent window.



Drag Camera Button: Controls the pan and tilt functions by clicking in the video pane and dragging the mouse.



Click and Center Button: Centers the camera by clicking the mouse in the video pane.



Drag and Zoom Button: Zooms in on a particular area by clicking and dragging the mouse.



Capture Button: Capture the image displayed in the video pane.



On-Screen Display Button: Displays the dome systems menu in the video pane.



Camera Configuration Menu Button: Displays the camera configuration menu.



Listen Button: Allows you to adjust the volume and listen to the audio that was sent to your PC from a microphone attached to the dome.



Talk Button: Transmits audio from your PC microphone to speakers connected to the dome. This button can be used in two modes: push-to-talk and hands-free (refer to *Transmitting Audio* on page 15).



Display Controls Button: Displays the control panel.

- 6 Control Panel:** Accesses the pan, tilt, zoom, focus, and brightness controls.
- 7 Camera Configuration Menu:** Adjusts brightness, saturation, hue, and contrast.
- 8 Live Video Pane:** Displays live video in the pane on the left side of the page.

CHANGING THE VIDEO FORMAT

This feature allows you to switch between MJPEG and MPEG-4 video formats. If you are using Firefox, this feature is not available and you will not see the Video Format drop-down box. You must use Internet Explorer (version 5.5 or later) to use the MPEG-4 video format.

1. Open the Video Format drop-down box by clicking the down arrow.
2. Select a video format from the drop-down box.

NOTE: When setting the video format to MPEG-4 for the first time, you will need to install ActiveX® Control. Follow the instructions displayed on your screen.

3. The video in the live video pane is updated. The selected image rate is now listed in the Image Rate box, and either the Image Rate or the Quality drop-down box is displayed on the left.

CHANGING THE IMAGE RATE/QUALITY

Depending on the video format selected, the drop-down box on the left changes from Image Rate to Quality. If MJPEG is selected, the Image Rate drop-down box is displayed. If MPEG-4 is selected (available only if using Internet Explorer), the Quality drop-down box is displayed.

MJPEG IMAGE RATE

The available MJPEG image rate settings are 15 ips, 10 ips, 5 ips, 2 ips, 1 ips, or Auto. The default MJPEG image rate is Auto. The Auto setting allows the system to maintain the highest image rate possible for the number of users logged on to the device. When set to Auto, the image rate will decrease as the number of users increases.

To change the image rate:

1. Open the Image Rate drop-down box by clicking the down arrow.
2. Select an image rate from the drop-down box.
3. The selected image rate is now listed in the Image Rate box.

NOTES:

- An image rate of 15 ips may not be obtainable due to network bandwidth, network latency, or processor limitations. To obtain a maximum rate of 30 ips, use the Spectra Mini IP dome system as an Endura Enabled device or with Pelco's API interface. Refer to the WS5000 Advanced System Software manual shipped with the Endura system.
- Network and processor bandwidth limitations may cause the video stream to pause or slow when an increased number of Web-interface users connect to the camera. Decrease the ips of the Web-interface video streams to compensate for network/processor limitations.

MPEG-4 IMAGE QUALITY

The following options are the available MPEG-4 image quality settings:

HIGH-Multicast (default): 30 ips, 4CIF resolution video stream that can be sent to many users.

LOW-Multicast: 30 ips, CIF resolution video stream that can be sent to many users.

HIGH-Unicast: 30 ips, 4CIF resolution video stream that can be sent to up to five users.

LOW-Unicast: 30 ips, CIF resolution video stream that can be sent to up to five users.

To change the image quality:

1. Open the Quality drop-down box by clicking the down arrow.
2. Select an image quality from the drop-down box.
3. The video in the live video pane is updated and the selected image quality is now listed in the Quality box.

NOTES:

- Setting the image quality to LOW may improve latency when trying to control the camera. If you are experiencing control issues try using one of the LOW settings.
- If your computer is on a different subnet than the camera to which you want to connect, you must use a unicast setting. Multicast video streams are not allowed to pass through subnets.

ALARMS

The alarm panel contains either a red or a green light. A red light indicates that the alarm is active, and a green light indicates that the alarm is inactive. The alarms cannot be activated or deactivated using the settings displayed in the Web browser. To change the alarm settings, you must use an Endura workstation. For more information, refer to the WS5000 Advanced System Software manual.

PRESETS

The Spectra Mini dome system has 64 preset positions. The programmable presets are numbered 1–32 and 35–55.

For more information, refer to the Spectra Mini Operation/Programming manual.

To call up a programmed preset:

1. Click the Presets tab in the “presets, patterns, and aux control panel.”
2. Click the Preset box and type the preset number.
3. Click the Go button. The camera moves to the preset location and displays it in the live video pane.

To program a preset:

1. Click the Presets tab in the “presets, patterns, and aux control panel.”
2. Click the Preset box and type a number that you want to assign to the preset you are creating.

NOTE: Be careful that you assign a number to the new preset that is not already assigned to another programmed preset. If you assign the new preset with the number of an existing preset, the previously programmed preset will be replaced by the new preset.

3. Move the camera to the desired location of the live video pane.
4. Click the Set button. The preset with the number you assigned is now programmed to the location displayed in the live video pane.

PATTERNS

To call up the programmed pattern:

1. Click the Patterns tab in the “presets, patterns, and aux control panel.”
2. Click Run. The pattern is displayed in the live video pane.

To program a pattern:

1. Click the Patterns tab in the “presets, patterns, and aux control panel.”
2. Click Start.
3. In the live video pane, move the camera to the desired series of locations.
4. Click End.

AUXILIARY CONTROLS

To turn on and off the auxiliary settings:

1. Click the Aux tab in the “presets, patterns, and aux control panel.”
2. Click either the On or Off button to perform the desired function.

For auxiliary configuration instructions, refer to the Spectra Mini Operation/Programming manual.

USING THE LIVE VIDEO PANE

CAPTURING A STILL IMAGE

1. Click the capture button.
2. The File Download dialog box opens, and the following message appears: "Do you want to open or save this file?"
3. Select one of the following options:

Open: Your computer's default image editing program opens and displays the screen image. This function is available only when using Internet Explorer version 7.0 or later. This function is not available if you are using Internet Explorer version 5.5 or 6.0.

Save: The image is saved as a JPEG file on your computer.

Cancel: The captured image is not saved or displayed and the dialog box closes.

EXPANDING THE VIDEO TO FULL PAGE

1. Click the "full page" button. The live video pane expands to the full size of the page, and all other controls are hidden.
2. To capture a video image, click the capture button.
3. To return to the Home page, click the back button.

OPENING THE VIDEO IN AN INDEPENDENT WINDOW

Opening the video in a separate window allows you to view the video while other applications are running. To open the video in a scalable, independent window:

1. Click the "scalable window" button. A new, independent window opens to display the live video.
2. To resize the window, drag the bottom-right corner of the window.
3. To capture a video image, click the capture button.

USING THE CAMERA'S PTZ FUNCTIONS

There are several ways to access the pan, tilt, and zoom (PTZ) functions of the camera. These options include using the "drag camera" button, the "click and center" button, the "drag and zoom" button, and the control panel.

In addition to the buttons on the Video Settings Toolbar, many PTZ functions are controllable using mouse and keyboard shortcuts (refer to *Using Mouse and Keyboard Shortcuts* on page 14).

Drag Camera Button

1. Click the "drag camera" button.
2. In the live video pane, press and drag the pointer to pan and tilt the camera.

Click and Center Button

1. Click the "click and center" button.
2. In the live video pane, click anywhere on the image to center the camera to that location.

Drag and Zoom Button

1. Click the “drag and zoom” button.
2. In the live video pane, center the pointer on the object or location to which you would like to zoom.
3. Press and drag the pointer to create a box around the object or location. When you release the mouse button, the camera automatically zooms to the box you created.

NOTE: The “drag and zoom” feature is also available while viewing video in a full page and an independent window.

Display Controls Button

1. Click the “display controls” button.
2. The control panel appears to the right of the button. The control panel buttons allow you to pan, tilt, zoom, focus, and adjust the iris of the camera.

ACCESSING THE CAMERA MENUS

For detailed information about the menu selections available for the Spectra Mini IP dome system, refer to the Spectra Mini Operation/Programming manual.

To access the camera menus:

1. Click the “on-screen display” button. The main menu appears over the image in the live video pane.
2. To navigate through the menus, use either the arrow keys on your keyboard or the arrow buttons in the control panel. To make a desired menu selection, either press the Enter key on your keyboard or click the “iris open” button in the control panel.

USING MOUSE AND KEYBOARD SHORTCUTS

Whether you are viewing video from the live video pane, full-page view, or in an independent window, many functions can be controlled using mouse and keyboard shortcuts (refer to Table A).

Table A. Mouse and Keyboard Shortcuts

Shortcut	Action
Mouse wheel	With the mouse pointer over the video pane, rotate the mouse wheel forward to zoom in; rotate the mouse wheel backward to zoom out.
Plus sign (+)	Press this key to zoom in.
Minus sign (-)	Press this key to zoom out.
w	Press this key to zoom out completely.
m	Press this key to open the on-screen menus.
Enter	Press this key to make a menu selection while navigating through the on-screen menus.
Esc	Press this key to Exit while navigating through the on-screen menus.
Up arrow	Press this key to: <ul style="list-style-type: none">• Tilt the camera up.• Move up through the on-screen menus.
Down arrow	Press this key to: <ul style="list-style-type: none">• Tilt the camera down.• Move down through the on-screen menus.
Left arrow	Press this key to pan the camera to the left.
Right arrow	Press this key to pan the camera to the right.
Number keys	Press keys 1 through 9 to call up the corresponding presets; press the 0 (zero) key to call up preset 10. NOTE: Presets 11 and higher cannot be called up using number key shortcuts (refer to <i>Presets</i> on page 11).
Home	Press this key to call up the home preset (refer to <i>Presets</i> on page 11).

RECEIVING AUDIO

The Listen button allows you to adjust the volume of the audio coming to your PC's speakers from a microphone connected to the dome. This button is hidden by default; it is only displayed if the audio settings on the General tab are properly configured (refer to *Audio Settings* on page 17) and the user has "Listen to Audio" permission (refer to *Roles Tab* on page 21).

To receive audio from the dome:

1. Click the Listen button. The background behind the button changes from gray to blue indicating that audio is being received. A volume slider also appears next to the button.
2. Move the slider to the right to increase the volume of the audio being received from the dome; move the slider to the left to decrease the volume.
3. Click the Listen button to stop receiving audio. The background behind the button returns to gray.

To adjust your PC's volume and balance settings using Windows XP:

1. Click Start > Programs > Accessories > Entertainment > Volume Control. The Volume Control window opens.
2. Adjust the appropriate settings as necessary.

TRANSMITTING AUDIO

The Talk button allows you to transmit audio from your PC to speakers connected to the dome. This button is hidden by default; it is only displayed if the audio settings on the General tab are properly configured (refer to *Audio Settings* on page 17) and the user has “Listen to Audio” permission (refer to *Roles Tab* on page 21).

To transmit audio from your PC, use either the push-to-talk mode or the hands-free mode:

Push-to-Talk Mode

1. Click and hold the Talk button. The background behind the button changes from gray to blue indicating that audio is transmitting.
2. Speak into your PC’s microphone. The audio from your PC broadcasts to the speakers connected to the dome.
3. Release the Talk button. The background behind the button returns to gray indicating that audio transmission to the dome stops.

Hands-Free Mode

1. Click and quickly release the Talk button. The background behind the button changes from gray to blue indicating that audio is transmitting.
2. Speak into you PC’s microphone. The audio from your PC broadcasts to the speakers connected to the dome.
3. Click and quickly release the Talk button to stop audio transmission. The background behind the button returns to gray.

CONFIGURING CAMERA SETTINGS

The Camera Configuration Menu allows you to adjust the camera’s brightness, saturation, hue, and contrast. Each of these functions can be set to Auto or Manual.

To change the camera settings:

1. Click the Camera Configuration Menu button. The Camera Configuration Menu appears below the live video pane.
2. Open the Mode drop-down box for each setting by clicking the down arrow.
3. Select either Manual or Auto.
 - If you selected Manual, move the slider left or right to change the setting. The number displayed to the right of the slider displays the setting level.
 - If you selected Auto, the slider disappears. The camera will adjust the settings automatically.
4. After changing the settings, click Save to save the changes, or click Cancel to restore the previously saved settings.

Settings Page

Use the various tabs on the Settings page to change the name of the dome system on the network; configure network settings; and add, change, or delete users and roles.

GENERAL TAB

Use the General tab to view the device's current firmware version, change the device name, change the language setting, turn on or off audio, and reset the device to the factory default settings.

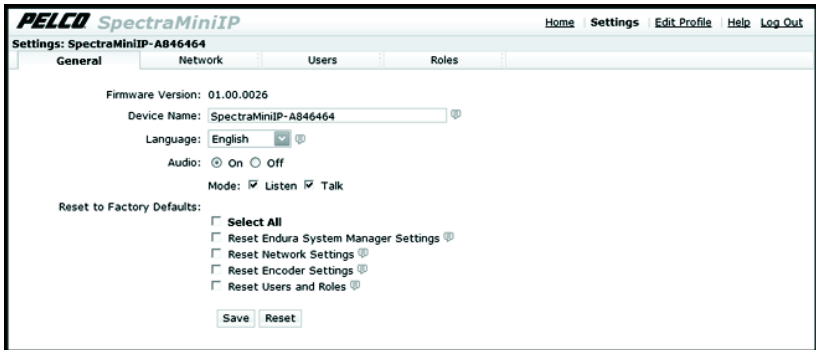


Figure 3. General Tab

CHANGING THE DEVICE NAME

The default device name is Pelco Device. To change the device name:

1. Click the Device Name box and highlight the text.
2. Type a user-friendly name into the Device Name box (2–64 characters). A user-friendly name makes it easier to recognize the device on the network. Examples of user-friendly names are Front Door, Lobby, or Parking Lot.
3. Click Save to save the new device name. Click Reset to revert to the previously saved device name.

CHANGING THE LANGUAGE

You can change the language in which the entire interface is displayed. This setting can, however, be overridden using the Language drop-down box that is located in the Login dialog box.

The default language is English. To change the language:

1. Open the Language drop-down box by clicking the down arrow.
2. Select a language from the drop-down box. The text in the window is displayed in the selected language.
3. Click Save to save the selected language setting. Click Reset to revert to the previously saved language.

AUDIO SETTINGS

There are several options for transmitting and receiving audio between your PC and speakers and a microphone connected to the dome. The default setting for Audio is Off, which means that no audio is transmitted or received between your PC and the dome. When Audio is off, the Talk and Volume Control buttons are not displayed on the Home page.

To enable audio transmission and receipt:

1. Go to Audio and select On.
2. Select one of the following combinations using the Mode check boxes:

Bidirectional Full-Duplex Audio: Select Listen and Talk to enable audio transmission and receipt between your PC and the dome. This is achieved by installing both a microphone and a speaker at both your PC and the dome location.

Listen: Select Listen to enable audio transmission from the dome to your PC without the ability to transmit audio in the opposite direction (from your PC to the dome). This allows you to listen to any activity occurring at the dome location. This is achieved with a speaker at your PC and a microphone at the dome location.

NOTES:

- Improper use of audio/visual recording equipment may subject you to civil and criminal penalties. Applicable laws regarding the use of such capabilities vary between jurisdictions and may require, among other things, express written consent from the recorded subjects. You are solely responsible for insuring strict compliance with such laws and for strict adherence to any/all rights of privacy and personalty.
- In Listen mode, the Talk button is not displayed on the Home page.

Talk: Select Talk to enable audio transmission from your PC to the dome without the ability to transmit audio in the opposite direction (from the dome to your PC). This is achieved with a microphone at your PC and a speaker at the dome location.

NOTE: In Talk mode, the Listen button is not displayed on the Home page.

3. Click Save to save the settings. Click Reset to revert to the previously saved settings.

RESET TO FACTORY DEFAULTS

1. To reset groups of settings to the factory defaults, select one or more of the following check boxes:
 - Reset Endura System Manager Settings:** Resets the internal camera settings that relate to an Endura system manager. This option should be used when moving the dome from one network with an Endura system manager to another network with an Endura system manager. This function requires an automatic dome system reboot.
 - Reset Network Settings:** Resets all settings on the Network tab to the factory defaults, including IP address settings and DHCP settings. This function requires an automatic dome system reboot.
 - Reset Encoder Settings:** Resets the internal video compression settings that relate to a video encoder. This function requires an automatic dome system reboot.
 - Reset Users and Roles:** Deletes all user accounts except admin and guest, and deletes all assigned roles except Manager, Operator, and Viewer.
2. Click Save to save the settings. Click Reset to revert to the previously saved settings.

NETWORK TAB

Use the Network tab to view the hardware address, change the host name, turn on/off the DHCP, or set a static IP address.

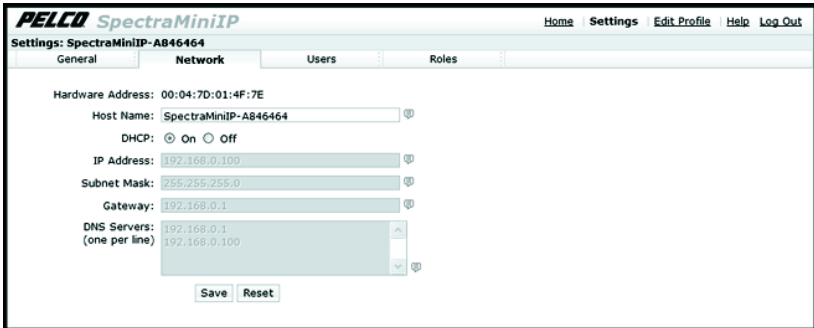


Figure 4. Network Tab

CHANGING THE HOST NAME

1. Click the Host Name box and highlight the text.
2. Type a user-friendly name into the Host Name box (1–21 characters) using any combination of alphanumeric characters. A user-friendly name makes it easier to recognize the device on the network.
3. Click Save to save the new host name. Click Reset to revert to the previously saved host name.

NETWORK SETTINGS

The network automatically assigns an IP address to the dome system. The following scenarios are how a DHCP or static network assigns IP settings:

DHCP network: If the dome system is connected to a DHCP network, the server will automatically assign an IP address to the device. DHCP is the default setting for the dome system.

Static IP network: The IP address 192.168.0.20 on subnet mask 255.255.255.0 is automatically assigned to the dome system.

WARNING: After the first dome system is plugged in and recognized on a static IP network, you must manually change the IP address of the dome system before plugging in any additional dome systems. Plugging in a second dome system before changing the IP address of the first may result in a loss of communication to one or both of the devices.

NOTES:

- Contact your network administrator to avoid any network conflicts before setting/changing the IP address of the device.
- If you do not know the IP address of the dome system, install the Pelco Device Utility software available on the CD shipped with the product. The utility will locate the assigned name, IP address, and media access control (MAC) address for the device.
- The Device Utility software is also available at www.pelco.com/software/downloads/.

Manually Setting the IP Address

1. Go to DHCP and select Off to turn off the DHCP.
2. Change the following network settings as required:

IP Address: Address of the device connected to the network.

Subnet Mask: Determines the network segment the IP protocol uses.

Gateway: Associated with both a router and a switch. The router determines where packets are sent, and the switch provides the path for the packet in and out of the gateway.

DNS Server: The address of the dedicated server that translates the names for Web sites and host names into numeric IP addresses.

3. Click Save to save the new settings. Click Reset to revert to the previously saved settings.

USERS TAB

Use the Users tab to create, modify, or delete user accounts. The Users tab includes default accounts for the following users:

Administrator: This is the only defined user that cannot be deleted; however, the administrator password can be changed. For security purposes, it is important that you change your password after you log on to the device for the first time. This user has access to all permissions.

Manager: This defined user can be modified or deleted. This user has access to all permissions *except* the "Modify Users and Roles" permission.

Operator: This defined user can be modified or deleted. This user only has access to the View Live Video and Allow PTZ Control permissions.

Viewer: This defined user can be modified or deleted. This user has only the View Live Video permission.

The screenshot shows the 'Users' tab in the PELCO SpectraMiniIP web interface. The page title is 'PELCO SpectraMiniIP' and the settings are for 'SpectraMiniIP-AB46464'. The 'Users' tab is selected, showing a list of users (admin, guest) on the left and a 'Create New User' form on the right. The form includes fields for Username, Password, Re-type Password, First Name, and Last Name, along with a 'Roles' section with checkboxes for Administrator, Manager, Operator, and Viewer. There are 'Create User' and 'Reset' buttons at the bottom.

Figure 5. Users Tab

ADDING A NEW USER PROFILE

1. Click in the Username box and type a user name (2–23 alphanumeric characters).
All user names are case insensitive and will be saved in all lowercase characters.
2. Click in the Password box and type a password (4–16 alphanumeric characters).
3. Click in the Retype Password box and retype your password.

4. If you choose, you may enter the first and last name of the user.
 - a. Click in the First Name box and type the user's first name (1–32 alphanumeric characters).
 - b. Click in the Last Name box and type the user's last name (1–32 alphanumeric characters).
5. Select the appropriate check boxes to choose the roles you want to assign to this user.
6. Click the Create User button to save the settings and create a new user.
7. The "Create a New User" page becomes the Editing User page. The new user profile appears in the Defined User Profiles section on the left side of the page.

MODIFYING A USER PROFILE

1. Click the user profile that you want to modify from the Defined User Profiles section.

The "Create a New User" page becomes the Editing User page.
2. Double-click in each of the text boxes to highlight the text. Type the new information in each text box.
3. Select or clear the appropriate check boxes from the Roles list.
4. Click the Update User button to save the changes and modify the user profile.

DELETING A USER PROFILE

1. Click the user profile that you want to delete from the Defined User Profiles section.

The "Create a New User" page becomes the Editing User page.
2. Click the Delete User button. A dialog box appears with the message "Are you sure you want to delete the user 'x'?"
3. Click OK. The user profile is deleted from the Defined User Profiles section.

ROLES TAB

Use the Roles tab to create, change, and delete roles and permissions. Multiple permissions can be assigned to each role. The following options are the available permissions that can be assigned to a role:

Edit Profile: Gives the user permission to edit his/her user profile. This does not give the user permission to edit any other profile.

Listen to Audio: Gives the user permission to transmit and receive audio to and from the dome depending on the audio settings on the General tab (refer to *Audio Settings* on page 17).

Modify General Settings: Gives the user access to the General tab on the Settings page. The user has permission to change the device name.

Modify Network Settings: Gives the user access to the Network tab on the Settings page. The user has permission to change network settings.

Modify Users And Roles: Gives the user access to the Users tab and the Roles tab on the Settings page. The user has permission to add, modify, or delete users and roles.

View Live Video: Gives the user permission to view the streaming video on the Home page.

Allow PTZ Control: Gives the user permission to control the PTZ functions of the dome system.

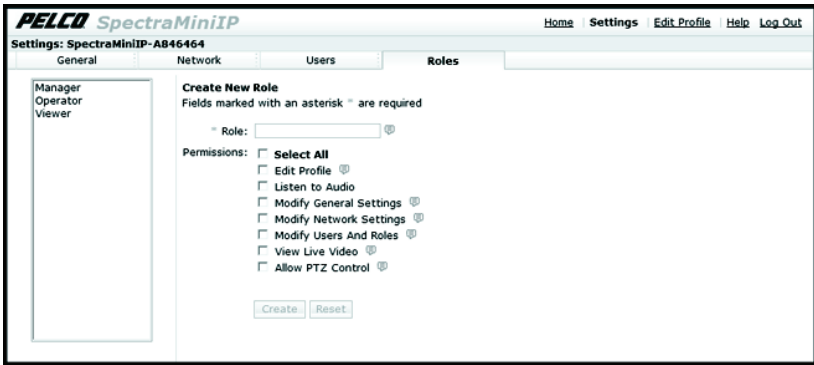


Figure 6. Roles Tab

CREATING A NEW ROLE

1. Click in the Role box and type a name for the role you are creating (2 to 23 alphanumeric characters).
2. Select the appropriate check boxes to choose the permissions you want to assign to this role.
3. Click the Create button to save the settings and create a new user.
4. The "Create a New Role" page becomes the Editing Role page. The new role now appears in both the Defined Roles section on the left side of the page and in the Roles list on the Users tab.

MODIFYING A ROLE

1. Click the role that you want to modify from the Defined Roles section.
The "Create a New Role" page becomes the Editing Role page.
2. Select or clear the appropriate check boxes from the Permissions list.
3. Click the Update button to save the changes and modify the role.

DELETING A ROLE

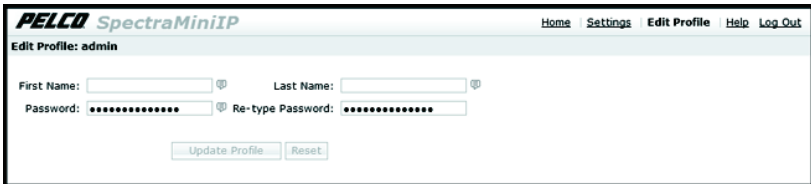
1. Click the role that you want to delete from the Defined Roles section.
The "Create a New Role" page becomes the Editing Role page.
2. Click the Delete button. A dialog box appears with the message "Are you sure you want to delete the role 'x'? This will effect the following users:"
3. Click OK. The user profile is deleted from the Defined Roles section.

NOTE: If a user has only one role assigned and that role is deleted, the user will no longer have any permissions. An administrator will have to assign a new role to that user before any permissions can be assigned.

Edit Profile Page

The Edit Profile page allows users with appropriate permissions to access and modify their profile settings. The following settings can be changed from this page:

- First Name
- Last Name
- Password



The screenshot shows the 'Edit Profile' page for a user named 'admin'. The page has a header with the PELCO SpectraMiniIP logo and navigation links: Home, Settings, Edit Profile, Help, and Log Out. Below the header, the user's profile information is displayed. There are three input fields: 'First Name', 'Last Name', and 'Password'. The 'Password' field is masked with asterisks. Below the input fields are two buttons: 'Update Profile' and 'Reset'.

Figure 7. Edit Profile Page

To change any of the settings on the Edit Profile page:

1. Click in the box that you would like to modify (First Name, Last Name, or Password).
2. Type the new information in each box.
3. When you are finished making changes to your profile, click the Update Profile button to save the changes.

Help Page

Online Help documents the basic instructions for configuring the dome system. Click Help in the navigation bar to access these instructions.

Log Off

To log off, click the Log Off button in the navigation bar. A login dialog box appears.

Troubleshooting

If the following instructions fail to solve your problem, contact Pelco Product Support at 1-800-289-9100 (USA and Canada) or +1-559-292-1981 (international) for assistance. Be sure to have the serial number available when calling.

Do not try to repair the unit yourself. Leave maintenance and repairs to qualified technical personnel.

Table B. Troubleshooting the Spectra Mini IP Dome System

Problem	Possible Cause	Suggested Solution
No video	PoE power issue	Check Cat5 cable connection.
		Verify PoE is enabled.
		Disconnect the network cable and then reconnect it to the dome system. Check the LED on the trim ring to verify that it is flashing green, indicating the dome system has power.
	Power issue (24 VAC)	Check the 24 VAC power supply connection.
		Disconnect the power cable and then reconnect it to the dome system. Check the LED on the trim ring to verify that it is flashing green, indicating the dome system has power.
	Network connectivity issues	Check network cable connections.
		Disconnect the network cable and then reconnect it to the dome system. Check the LED on the trim ring to verify that it is flashing green.
		Reset the unit to factory defaults by pressing the reset button (refer to the Spectra Mini IP Installation manual).
		Replace network cable with new cable.
	Image too dark/ black image	Installation or configuration error
Make sure dome system is not located in an environment with zero light.		
Verify iris setting is correct.		
Verify brightness setting is correct.		
Verify contrast setting is correct.		

Table B. Troubleshooting the Spectra Mini IP Dome System

Problem	Possible Cause	Suggested Solution
Image too light	Installation or configuration error	Verify iris setting is correct.
		Verify brightness setting is correct.
		Verify contrast setting is correct.
Image only displayed in black and white	Configuration error	Verify video saturation setting is correct.
Dome system not discovered	No dome system power	Verify the dome system is powered correctly with PoE or with 24 VAC. Confirm power consumption with Web interface of PoE-capable switch or through blinking green LED during dome system power-up.
	Network conflict	Verify the dome system is physically connected to the same network as the PC running the Pelco Device Utility. NOTE: The utility will not work on a network that blocks multicast traffic.
		Confirm the green LED blinks when power is applied to the dome system, indicating network connectivity.
Network not working	Faulty cable connection	Check all cable connections and ensure all plugs are properly plugged in.
	Incorrect network device configuration	A hub will not work with the available network bandwidth shared across all ports. Use a Fast Ethernet switch, Gigabit Ethernet switch, or a cable modem router with an n-Port switch.
	Network connectivity issues	Contact your network administrator.
No video	PoE power issue	Check Cat5 cable connection.
		Verify PoE is enabled.
		Disconnect the network cable and then reconnect it to the dome system. Check the LED on the trim ring to verify that it is flashing green, indicating the dome system has power.
No video	Power issue (24 VAC)	Check the 24 VAC power supply connection.
		Disconnect the power cable and then reconnect it to the dome system. Check the LED on the trim ring to verify that it is flashing green, indicating the dome system has power.
	Network connectivity issues	Check network cable connections.
		Disconnect the network cable and then reconnect it to the dome system. Check the LED on the trim ring to verify that it is flashing green.
		Reset the unit to factory defaults by pressing the reset button (refer to the Spectra Mini IP Installation manual).
Replace network cable with new cable.		

Table B. Troubleshooting the Spectra Mini IP Dome System

Problem	Possible Cause	Suggested Solution
Audio signal is weak.	Incorrect type of transformer	Be sure you are using a 600-ohm impedance matching transformer
	Wiring distance connecting the audio equipment may be too long	Test the equipment using a shorter wiring distance.
	Speaker gain is not properly adjusted	If you are using an external amplifier and it has an adjustable gain, increase the gain until the signal is acceptable.
	Microphone gain is not properly adjusted	Increase the microphone volume on your PC until the signal is acceptable (refer to the documentation shipped with your PC's sound card).
Echoes when audio is received	Speaker volume is too high	Lower the speaker volume.
	Microphone and speaker are too close	If your call station does not have built-in echo cancellation, move the microphone and speaker farther apart.
	Call station does not have built-in echo cancellation	Use a call station with built-in echo cancellation.

REVISION HISTORY

Manual #	Date	Comments
C3447M	7/08	Original version.
C3447M-A	9/08	Corrected default static IP address and subnet mask.
C3447M-B	8/09	Added bidirectional full-duplex audio information per CN23055.

Pelco, the Pelco logo, Camclosure, Digital Sentry, Endura, Esprit, ExSite, Genex, Intelli-M, Legacy, and Spectra are registered trademarks of Pelco, Inc. Spectra III and Endura Enabled are trademarks of Pelco, Inc.

DLP is a registered trademark of Texas Instruments Incorporated.

All product names and services identified throughout this document are trademarks or registered trademarks of their respective companies.

The absence of a trademark or registered trademark from this document does not constitute a waiver of intellectual property rights.

© Copyright 2009, Pelco, Inc. All rights reserved.

PRODUCT WARRANTY AND RETURN INFORMATION

WARRANTY

Pelco will repair or replace, without charge, any merchandise proved defective in material or workmanship **for a period of one year** after the date of shipment.

Exceptions to this warranty are as noted below:

- Five years:
 - Fiber optic products
 - TW3000 Series unshielded twisted pair (UTP) transmission products
 - CC3701H-2, CC3701H-2X, CC3751H-2, CC3651H-2X, MC3651H-2, and MC3651H-2X camera models
- Three years:
 - Pelco-branded fixed camera models (CCC1390H Series, C10DN Series, C10CH Series, IP3701H Series, and IX Series)
 - EH1500 Series enclosures
 - Spectra[®] IV products (including Spectra IV IP)
 - Camclosure[®] Series (IS, ICS, IP) integrated camera systems
 - DX Series digital video recorders, DVR5100 Series digital video recorders, Digital Sentry[®] Series hardware products, DVX Series digital video recorders, and NVR300 Series network video recorders
 - Endura[®] Series distributed network-based video products
 - Genex[®] Series products (multiplexers, server, and keyboard)
 - PMCL200/300/400 Series LCD monitors
- Two years:
 - Standard varifocal, fixed focal, and motorized zoom lenses.
 - DF5/DF8 Series fixed dome products
 - Legacy[®] Series integrated positioning systems
 - Spectra III[™], Spectra Mini, Spectra Mini IP, Esprit[®], ExSite[®], and PS20 scanners, including when used in continuous motion applications.
 - Esprit Ti and TI2500 Series thermal imaging products
 - Esprit and VVV5700 Series window wiper (excluding wiper blades).
 - CM6700/CM6800/CM9700 Series matrix
 - Digital Light Processing (DLP[®]) displays (except lamp and color wheel). The lamp and color wheel will be covered for a period of 90 days. The air filter is not covered under warranty.
 - Intelli-M[®] eIDC controllers
- One year:
 - Video cassette recorders (VCRs), except video heads. Video heads will be covered for a period of six months.
- Six months:
 - All pan and tilts, scanners, or preset lenses used in continuous motion applications (preset scan, tour, and auto scan modes).

Pelco will warrant all replacement parts and repairs for 90 days from the date of Pelco shipment. All goods requiring warranty repair shall be sent freight prepaid to a Pelco designated location. Repairs made necessary by reason of misuse, alteration, normal wear, or accident are not covered under this warranty.

Pelco assumes no risk and shall be subject to no liability for damages or loss resulting from the specific use or application made of the Products. Pelco's liability for any claim, whether based on breach of contract, negligence, infringement of any rights of any party or product liability, relating to the Products shall not exceed the price paid by the Dealer to Pelco for such Products. In no event will Pelco be liable for any special, incidental, or consequential damages (including loss of use, loss of profit, and claims of third parties) however caused, whether by the negligence of Pelco or otherwise.

The above warranty provides the Dealer with specific legal rights. The Dealer may also have additional rights, which are subject to variation from state to state.

If a warranty repair is required, the Dealer must contact Pelco at (800) 289-9100 or (559) 292-1981 to obtain a Repair Authorization number (RA), and provide the following information:

1. Model and serial number
2. Date of shipment, P.O. number, sales order number, or Pelco invoice number
3. Details of the defect or problem

If there is a dispute regarding the warranty of a product that does not fall under the warranty conditions stated above, please include a written explanation with the product when returned.

Method of return shipment shall be the same or equal to the method by which the item was received by Pelco.

RETURNS

To expedite parts returned for repair or credit, please call Pelco at (800) 289-9100 or (559) 292-1981 to obtain an authorization number (CA number if returned for credit, and RA number if returned for repair) and designated return location.

All merchandise returned for credit may be subject to a 20 percent restocking and refurbishing charge.

Goods returned for repair or credit should be clearly identified with the assigned CA or RA number and freight should be prepaid

12-23-08

PELCO

by **Schneider** Electric

www.pelco.com

Pelco, Inc. Worldwide Headquarters 3500 Pelco Way Clovis, California 93612 USA
USA & Canada Tel (800) 289-9100 Fax (800) 289-9150
International Tel +1 (559) 292-1981 Fax +1 (559) 348-1120

Free Manuals Download Website

<http://myh66.com>

<http://usermanuals.us>

<http://www.somanuals.com>

<http://www.4manuals.cc>

<http://www.manual-lib.com>

<http://www.404manual.com>

<http://www.luxmanual.com>

<http://aubethermostatmanual.com>

Golf course search by state

<http://golfingnear.com>

Email search by domain

<http://emailbydomain.com>

Auto manuals search

<http://auto.somanuals.com>

TV manuals search

<http://tv.somanuals.com>