



3500 Pelco Way,
Clovis, CA 93612-5699
USA

In North America & Canada:
Tel (800) 289-9100
FAX (800) 289-9150

International Customers:
Tel +1 (559) 292-1981
FAX +1 (559) 348-1120

www.pelco.com

C350SM (10/99) PS7 and PS7-24 Light-Duty Scanners

This maintenance/service manual consists of an exploded assembly diagram, wiring diagrams, and parts lists. Use this manual when ordering replacement parts for PS7/PS7-24 Scanners.

MAINTENANCE

Under normal operating conditions and usage, maintenance of this equipment is not necessary. The scanners in the PS7 Series require no lubrication, and the motors are both clutch and impedance protected from overload. The outside of the scanner may be cleaned by wiping with a dry cloth or spraying with clean air pressure. **Do not use** spray cleaners or water.

EXPLODED ASSEMBLY DIAGRAM

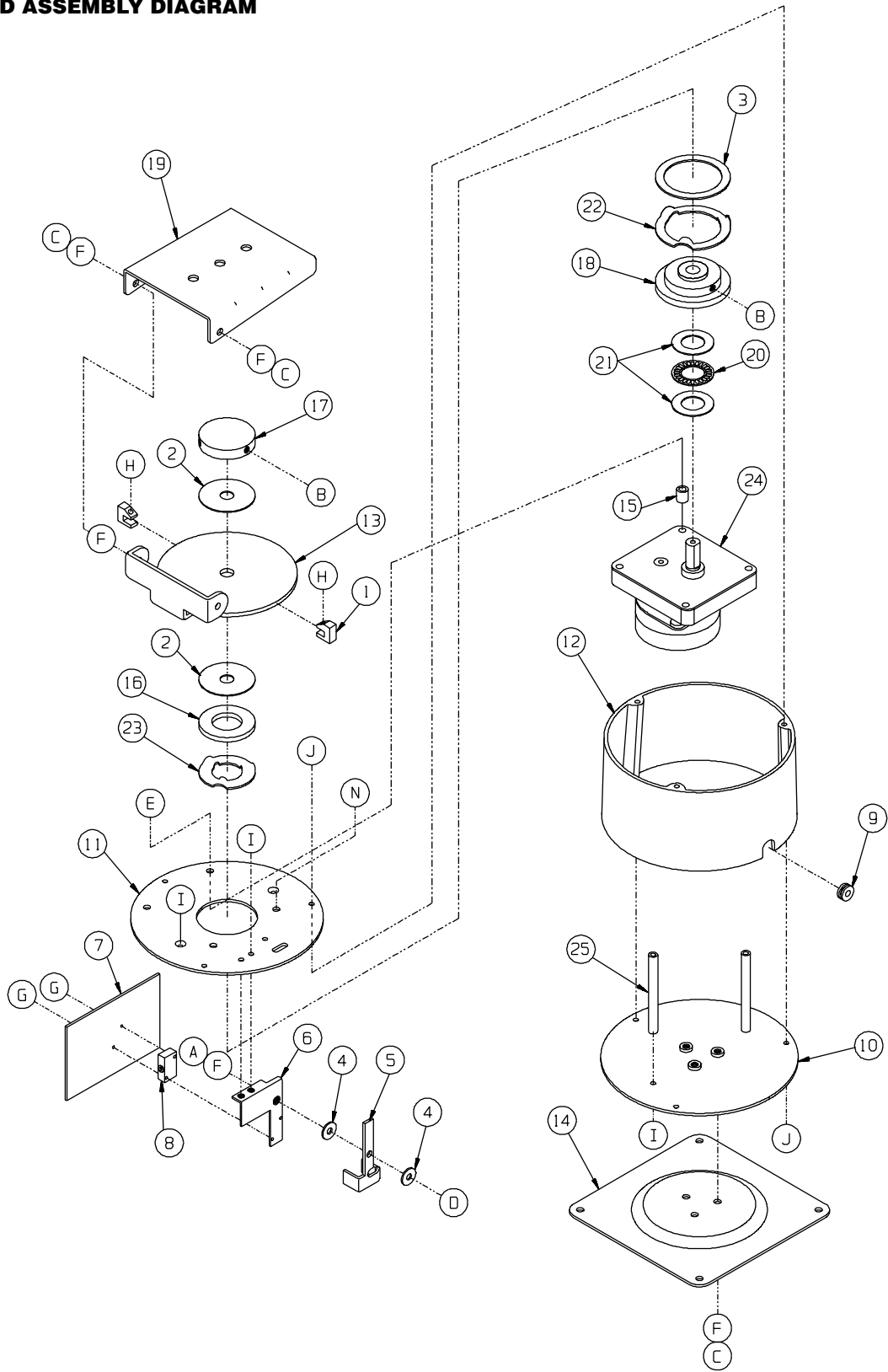


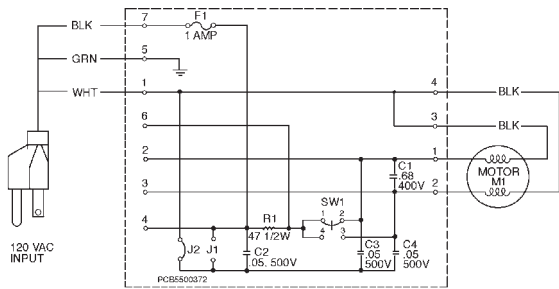
Figure 1. PS7 and PS7-24 Exploded Assembly

PS7 and PS7-24 Parts List

Item	Qty	Description	Part Number
1	2	Pan limit stop	58010006
2	2	Clutch	PS710000
3	1	Drag clutch	PS710002
4	2	Limit friction disk	PS710001
5	1	Switch actuator	PS74015COMP
6	1	Switch bracket	PS74016COMP
7	1	PC board assembly 120 VAC (model PS7) 24 VAC (model PS7-24)	PS71004COMP PS71003COMP
8	1	Switch	SWI11-314
9	1	Rubber grommet	GRO2170
10	1	Bottom plate	PS74100COMP
11	1	Top plate	PS74101COMP
12	1	Body	PS74002
13	1	Limit support	PS74003COMP
14	1	Mounting plate	PS74004COMP
15	4	Spacer	ZH30-0202-0404
16	1	Pressure plate	PS74009COMP
17	1	Thrust collar	PS74011COMP
18	1	Bearing holder	PS74012COMP
19	1	Tilt table	PS74134COMP
20	1	Bearing	PS76000
21	2	Washer	PS76001
22	1	Spring	PS76002
23	1	Spring	PS76003
24	1	Motor 120 VAC (PS7) 24 VAC (PS7-24)	2708000 PS78001
25	2	Spacer, threaded 6-32 x 2.50 round	SPA1857
A	1	Nut, 10-32	ZH10-32NUTSH
B	3	Set screw, 10-32 x .3125-inch	ZH10-32X.312S
C	5	Screw, 10-32 x .375-inch, Phillips, pan head	ZH10-32X.375SPP
D	1	Screw, 10-32 x .5-inch, Phillips, pan head	ZH10-32X.500SPP
E	2	Screw, 10-32 x 1-inch, Phillips, flat head	ZH10-32X1.00SFP
F	7	Internal tooth lock washer, #10	ZH10LWSIS
G	2	Screw, 2-56 x .75-inch, Phillips, pan head	ZH2-56X.750SRS
H	2	Set screw, 6-32 x .1875-inch	ZH6-32X.187S
I	6	Screw, 6-32 x .375-inch slot, flat head	ZH6-32X.375SFP
J	6	Screw, 6-32 x .375-inch, Phillips, pan head	ZH6-32X.375SPP
L	2	Internal tooth lock washer, #6 (not shown)	ZH6LWSIS
M	Not used		
N	2	Screw, 10-32 x .75-inch Phillips, flat head	ZH10-32X.750SFP

WIRING DIAGRAMS

PS7 WIRING DIAGRAM

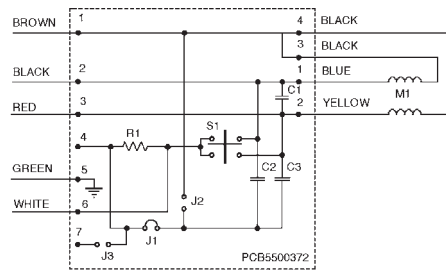


QTY	SYMBOL	DESCRIPTION	PART NUMBER
1	F1	FUSE	FUS1
1	R1	RESISTOR	RES047.0-.5
1	SW1	SWITCH	SW111-314
1	C1	CAPACITOR	CAPU000.08/400
1	C2	CAPACITOR	CAPU000.05/500
1	C3	CAPACITOR	CAPU000.05/500
1	C4	CAPACITOR	CAPU000.05/500
1	M1	MOTOR	2708000
1	-	PC BOARD ASSY	PS71004COMP

COLOR	FUNCTION	PC BOARD PIN NO.
WHITE	AC NEUTRAL	1
GREEN	GROUND	5
BLACK	AC HIGH	7

NOTE: WIRE COLORS ARE TYPICAL.

PS7-24 WIRING DIAGRAM



QTY	SYMBOL	DESCRIPTION	PELCO PART #
1	M1	MOTOR	PS78001
1	S1	SWITCH	SW111-314
1	C1	CAPACITOR, 20µF/100V	CAPU0020.0/100N
2	C2-C3	CAPACITOR, .05µF/500V	CAPU000.05/500
1	R1	RESISTOR, 10 OHM, 1/2W	RES010.0-.5

WIRE COLOR	FUNCTION	PC BOARD PIN NUMBER
BLACK	PAN RIGHT	2
WHITE	AUTO PAN	6
RED	PAN LEFT	3
GREEN	GROUND	5
BROWN	PAN COMMON	1

WARRANTY AND RETURN INFORMATION

WARRANTY

Pelco will repair or replace, without charge, any merchandise proved defective in material or workmanship for a period of one year after the date of shipment.

Exceptions to this warranty are as noted below:

- Five years on FT/FR8000 Series fiber optic products.
- Three years on Genex® Series products (multiplexers, server, and keyboard).
- Three years on Camclosure® and fixed camera models, except the CC3701H-2, CC3701H-2X, CC3751H-2, CC3651H-2X, MC3651H-2, and MC3651H-2X camera models, which have a five-year warranty.
- Two years on standard motorized or fixed focal length lenses.
- Two years on Legacy®, CM6700/CM6800/CM9700 Series matrix, and DF5/DF8 Series fixed dome products.
- Two years on Spectra®, Esprit®, ExSite™, and PS20 scanners, including when used in continuous motion applications.
- Two years on Esprit® and WW5700 Series window wiper (excluding wiper blades).
- Eighteen months on DX Series digital video recorders, NVR300 Series network video recorders, and Endura™ Series distributed network-based video products.months on DX Series digital video recorders, NVR300 Series network video recorders, Endura™ Series distributed network-based video products, and TW3000 Series twisted pair transmission products.
- One year (except video heads) on video cassette recorders (VCRs). Video heads will be covered for a period of six months.
- Six months on all pan and tilts, scanners or preset lenses used in continuous motion applications (that is, preset scan, tour and auto scan modes).

Pelco will warrant all replacement parts and repairs for 90 days from the date of Pelco shipment. All goods requiring warranty repair shall be sent freight prepaid to Pelco, Clovis, California. Repairs made necessary by reason of misuse, alteration, normal wear, or accident are not covered under this warranty.

Pelco assumes no risk and shall be subject to no liability for damages or loss resulting from the specific use or application made of the Products. Pelco's liability for any claim, whether based on breach of contract, negligence, infringement of any rights of any party or product liability, relating to the Products shall not exceed the price paid by the Dealer to Pelco for such Products. In no event will Pelco be liable for any special, incidental or consequential damages (including loss of use, loss of profit and claims of third parties) however caused, whether by the negligence of Pelco or otherwise.

The above warranty provides the Dealer with specific legal rights. The Dealer may also have additional rights, which are subject to variation from state to state.

If a warranty repair is required, the Dealer must contact Pelco at (800) 289-9100 or (559) 292-1981 to obtain a Repair Authorization number (RA), and provide the following information:

1. Model and serial number
2. Date of shipment, P.O. number, Sales Order number, or Pelco invoice number
3. Details of the defect or problem

If there is a dispute regarding the warranty of a product which does not fall under the warranty conditions stated above, please include a written explanation with the product when returned.

Method of return shipment shall be the same or equal to the method by which the item was received by Pelco.

RETURNS

In order to expedite parts returned to the factory for repair or credit, please call the factory at (800) 289-9100 or (559) 292-1981 to obtain an authorization number (CA number if returned for credit, and RA number if returned for repair).

All merchandise returned for credit may be subject to a 20% restocking and refurbishing charge.

Goods returned for repair or credit should be clearly identified with the assigned CA or RA number and freight should be prepaid. Ship to the appropriate address below.

If you are located within the continental U.S., Alaska, Hawaii or Puerto Rico, send goods to:

Service Department
Pelco
3500 Pelco Way
Clovis, CA 93612-5699

If you are located outside the continental U.S., Alaska, Hawaii or Puerto Rico and are instructed to return goods to the USA, you may do one of the following:

If the goods are to be sent by a COURIER SERVICE, send the goods to:

Pelco
3500 Pelco Way
Clovis, CA 93612-5699 USA

If the goods are to be sent by a FREIGHT FORWARDER, send the goods to:

Pelco c/o Expeditors
473 Eccles Avenue
South San Francisco, CA 94080 USA
Phone: 650-737-1700
Fax: 650-737-0933

REVISION HISTORY

Manual #	Date	Comments
C350SM	10/99	Original version.

© Pelco, the Pelco logo, Spectra, Esprit, Genex, Legacy, and Camclosure are registered trademarks of Pelco.

™ Endura and ExSite are trademarks of Pelco.

© Copyright 1999, Pelco. All rights reserved.

Free Manuals Download Website

<http://myh66.com>

<http://usermanuals.us>

<http://www.somanuals.com>

<http://www.4manuals.cc>

<http://www.manual-lib.com>

<http://www.404manual.com>

<http://www.luxmanual.com>

<http://aubethermostatmanual.com>

Golf course search by state

<http://golfingnear.com>

Email search by domain

<http://emailbydomain.com>

Auto manuals search

<http://auto.somanuals.com>

TV manuals search

<http://tv.somanuals.com>