



Operating Instructions for the Juice Bar

Table of Contents

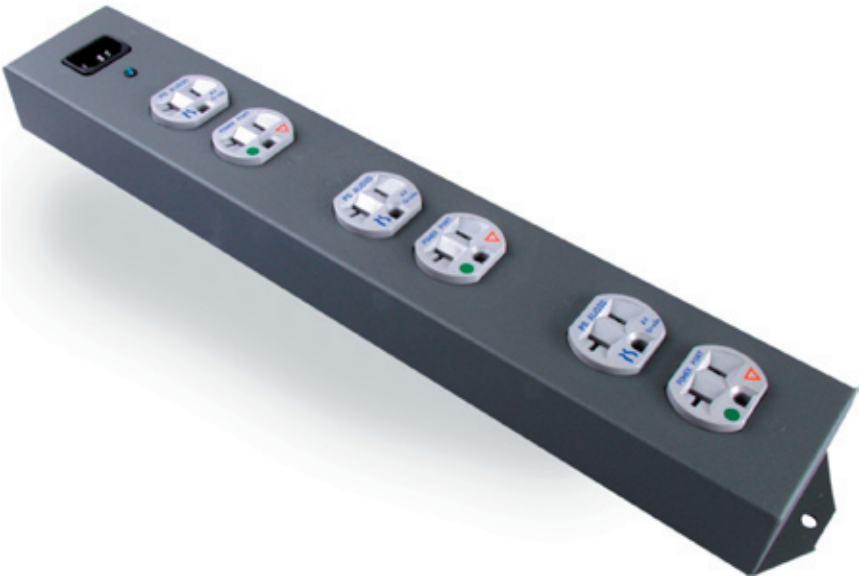
2. Safety Instructions
2. Overview
2. Installation Instructions
3. Protection Features
3. Warranty and Service Issues
3. Specifications
4. Contact Information

What's in the Box

- One Juice Bar
- One 3 foot AC power cable
- One user's manual
- One warranty card

IMPORTANT:

Be sure to save all packing materials included with the Juice Bar as this will be required if you ever need to ship the unit for service or modification.



Safety Instructions

To prevent fire or shock hazard, do not expose the unit to rain or moisture. To avoid electrical shock, do not open the enclosure. Refer servicing to qualified personnel only.

To prevent electric shock, use a 3 prong, grounded type power cable.

Any change or modifications not expressly approved in the manual could void your warranty.

Read the operating instructions provided with the Juice Bar.

Retain the operating instructions for later use and reference.

Unplug the Juice Bar from the wall outlet or power source before performing any cleaning or service.

Do not operate the Juice Bar near water. Avoid placement near a water reservoir or excessive moisture.

When replacement parts are required, be sure they are specified by the manufacturer to have the same characteristics as the original part. Unauthorized substitutions may result in fire, electric shock, or other hazards.

Do not operate with faulty or frayed power cables.

It is not advisable to use an extension cord with this device. If it is necessary to extend the length please use a longer IEC equipped detachable power cord.

When connecting the Juice Bar to a 2-prong receptacle, always use a grounding adapter and attach the ground wire screw to the wall outlet cover.

Overview

The Juice Bar is designed to provide unrestricted current flow to each of its outlets. It can be used as a standalone power distribution device. It can also be used to extend the benefit of the clean, protected power provided by other power distribution products, such as the PS Audio Ultimate Outlet or Power Plant.

In most commercial power strips the resistance of the current flow increases with the distance from the power inlet. The Juice Bar uses a star wiring technique which gives all outlets equal power delivery.

- 3 nickel plated PS Audio Power Port duplex receptacles, provides power for up to 6 components.
- Rugged steel chassis
- 14 gauge OFC internal wiring
- Blue operation LED
- Star wiring for equal power distribution
- Detachable AC input cable



Installation Instructions

Plug all associated equipment into the PS Audio Juice Bar. For electrical safety use only polarized plugs or US grounded (3 prong) plugs.

Plug the detachable power cable into a grounded AC power outlet or a power source such as a PS Audio Power Plant or Ultimate Outlet. For maximum performance

use a PS Audio xStream Power cable. To provide the best electrical connection the Juice Bar should be plugged into a PS Audio Power Port duplex outlet.

Confirm that the blue indicator light is on. This light indicates the presence of live AC power. If the blue indicator light is not illuminating then there is no power present. Verify the power source is active or the power source is operational and providing power.

If the blue LED is lit, the connected equipment is ready to use.

Wall or ceiling mounting instructions (Optional)

Two #8 or #10 screws are required. Make sure the mounting surface is strong enough to support the weight of the Juice Bar and connected power cables, i.e., wood or plywood, etc. Alternatively, wall anchors can be used if the surface is not supportive enough.

Hold the unit in the desired mounting position. Mark the location of the screws with a pencil. Pre-drill the holes at that location.

Insert the screws through the holes at each end of the Juice Bar. While holding the Juice Bar in place tighten the screws until they are snug. Do not overtighten the screws.

Protection Features

Since The Juice Bar is designed for maximum performance and unrestricted current flow it does not provide any protection as a lightning arrestor, surge suppressor or spike protector.

To properly protect connected equipment, plug the Juice Bar into a product that provides these features such as a PS Audio Power Plant, Ultimate Outlet or any other similarly designed device. This will not only extend the number of available outlets but extend the protection and cleansing benefits as well.

If the Juice Bar is not plugged into a device with these features the connected equipment is will not be protected.

Specifications

Height	- 1.75 in
Width	- 2.75 in
Length	- 16.25 in
Weight	- 3 lbs
Internal wiring	- 14 ga
Power inlet	- 15 amp IEC

Warranty and Service

Inside the U.S. and Canada

PS Audio's warranty is 3 years parts and labor, from the date of original purchase. The warranty follows the product itself regardless of ownership, new or used.

Outside the U.S. and Canada

PS Audio has authorized distribution in many countries of the world. In each country, the authorized importing retailer or distributor has accepted the responsibility for warranty of products sold by that retailer or distributor. Warranty service should normally be obtained from the importing retailer or distributor from whom you purchased the product. In the unlikely event of service required beyond the capability of the importer, PS Audio will fulfill the conditions of the warranty. Such product must be returned at the owner's expense to the PS Audio factory. Contact your PS Audio distributor or the PS Audio customer service department for more information.

Service issues

Should your unit ever require service or if you have any technical questions about the Juice Bar, ether contact your dealer (PS Audio if purchased direct) or your PS Audio distributor. No equipment will be received at our service facilities without an attached RA number.

If purchased through an authorized PS Audio dealer or distributor, the RA number must be obtained by the dealer or distributor. If the product was purchased from PS Audio direct, this can easily be obtained by contacting PS Audio at:

E-mail - service@psaudio.com
Phone - 720.406.8946
Fax - 720.406.8967



***PS Audio International, Inc.
4826 Sterling Dr.
Boulder, CO 80301 USA***

***Toll Free: 877.772.8340
Phone: 720.406.8946
Fax: 720.406.8967***

www.psaudio.com

Free Manuals Download Website

<http://myh66.com>

<http://usermanuals.us>

<http://www.somanuals.com>

<http://www.4manuals.cc>

<http://www.manual-lib.com>

<http://www.404manual.com>

<http://www.luxmanual.com>

<http://aubethermostatmanual.com>

Golf course search by state

<http://golfingnear.com>

Email search by domain

<http://emailbydomain.com>

Auto manuals search

<http://auto.somanuals.com>

TV manuals search

<http://tv.somanuals.com>