

# **PENPOWER TOOYA PRO**

## **Quick Guide**

# CONTENTS

<b>Package Contents .....</b>	<b>1</b>
<b>Hardware Introduction.....</b>	<b>1</b>
How to change battery and refill.....	1
<b>PENPOWER TOOYA PRO 12.1".....</b>	<b>2</b>
<b>System Requirements.....</b>	<b>2</b>
<b>Windows® Vista™ Home Premium /Business/ Ultimate.....</b>	<b>2</b>
Setting Up your Tablet PC.....	3
Pen functionality available in Window Vista™ Ultimate Version and Office 2007.....	3
<b>Windows® 2000/XP/Vista™ /Mac OS X V.10.2.8 &amp; higher.....</b>	<b>4</b>
Tablet Settings.....	4
* Windows® 2000/XP/Vista™.....	4
* Mac OS X V.10.2.8 & higher.....	4
Pen Settings.....	4
* Side Button.....	5
* Default Settings.....	5
* Pen Offset Value.....	5
* Click Pressure.....	6

# PENPOWER TOOYA PRO Quick Guide

TOOYA PRO has a wide active area design so that you can use it with your wide screen without any distortion problems. And Windows® Vista™ supports pen features such as note taking, handwriting recognition, and gesture recognition to give you the result you want quickly and easily. Just follow this quick guide and enjoy your e-life with our TOOYA PRO.

## Package Contents

- |                      |                 |
|----------------------|-----------------|
| • 1 graphics tablet  | • 1 pen holder  |
| • 1 pen              | • 2 refills     |
| • 1 pair of tweezers | • 1 Quick Guide |
| • 2 Driver CDs       |                 |

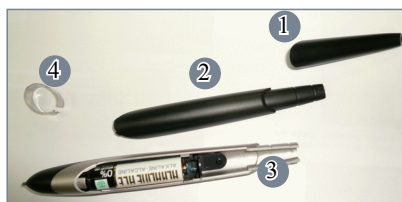
## Hardware Introduction

**Slim Tablet:** Flat design TOOYA PRO is not only a tablet but also a mouse pad.

**Pen:** The pen is used like a normal writing pen. On the **About** tab, make sure the **Tracking Mode** is set to **Pen**. You can customize the side button in the tablet setting. The pen has a power-saving function. If the pen is not be used for more than 3 minutes, it will go into **sleep** mode. The pen can be used again while you press the tip of the pen.

## How to change battery and refill

1. Take off the tail cover.
2. Open the pen cover.
3. Change a new battery then close pen cover and put on tail cover.
4. Please use tweezers to draw the cartridge from the pen, then replace with a new one.



# PENPOWER TOOYA PRO 12.1"

TOOYA PRO 12.1"	
Active area	10" x 6.25"
Outline dimensions	306x257x9mm
Resolution	2000 lpi.
Report rate	125rps
Pen pressure	1024 levels
Reading high	Max 10 mm
LED indicator	1 blue LED
Power consumption	Max 40mA
Interface	USB 1.1 (full Speed)
USB cable	1.5 meters
Support operating system	Mac OS X system/Windows 2000/XP/Vista

## System Requirements

PC computer running Windows® 2000/XP/Vista™ or Macintosh© computer running Mac OS X V.10.2.8 & higher with powered USB port, DVD-ROM driver and wide display.

## Windows® Vista™ Home Premium/Business/ Ultimate

TOOYA PRO is a Windows Vista plug-n-play device. You can use the basic tablet function without installing any driver, just plug-n-play.

Now Microsoft® brand-new OS Vista™ provides a lot of pen functionality that was available in XP Tablet PC Edition. With Vista, you can get great pen functionality including note taking, handwriting recognition, and gesture recognition to help you get the result you want quickly and easily. This manual will guide you to find this pen functionality in Windows Vista.

*Note: Due to Microsoft's package definition, you might not have all the pen functionality in your version of Vista or Office 2007. Please check your version first.*

## Setting Up your Tablet PC

Find the program to set up your pen:

Start -> Control Panel -> Tablet PC setting -> Pen and Input Device.

Also, there are several pen training features included.

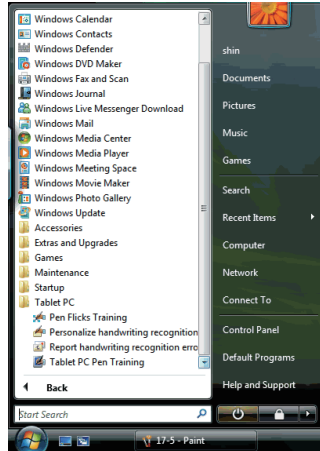
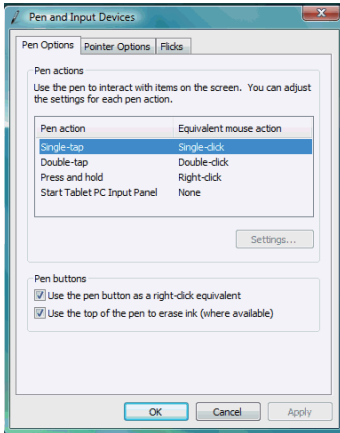
Start -> All Programs -> Tablet PC

-> Pen Flick Training

-> Personalize handwriting recognition

-> Report handwriting recognition errors

-> Tablet PC Pen Training



## Pen functionality available in Window Vista™ Ultimate Version and Office 2007

Pen functionality is built-in in Office 2007 Word, Excel, Outlook and Power Point. You can easily use any Ink Tools in your office documents or in handwriting a letter directly in Outlook.

In Word, Excel, and Power Point go to the **Review** tab, **Start Inking**.

In Outlook go to the **Message** toolbar, then **Start Inking**.

# Windows® 2000/XP/Vista™ /Mac OS X V.10.2.8 & higher

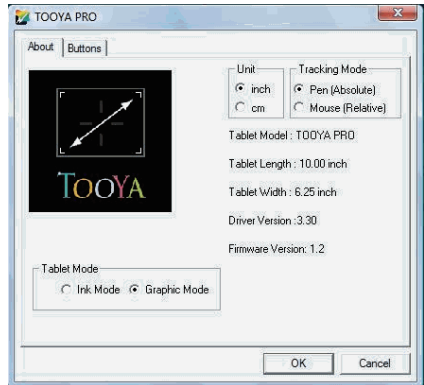
With Windows® 2000/XP/Vista™/Mac OS X V.10.2.8 & higher, you have to install a driver before the device is plugged to your PC. Once the driver is installed successfully, TOOYA PRO will work.

## Tablet Settings

### \* Windows® 2000/XP/Vista™

Execute Start -> All Programs -> Tablet -> Tablet Setting.

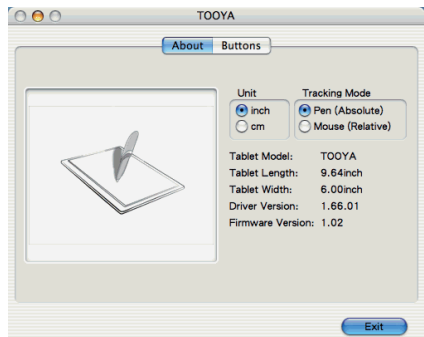
On the **About** tab, the tablet size can be chosen in centimeters or inches. The model of tablet and version are shown on this page too. You can also select pen mode or mouse mode here. For **Tablet Mode**, you can select **Ink Mode** or **Graphic Mode**. **Ink Mode** is for some specific software in Vista like Paint, Windows Journal...etc. In general, we suggest you choose **Graphic Mode**.



### \* Mac OS X V.10.2.8 & higher

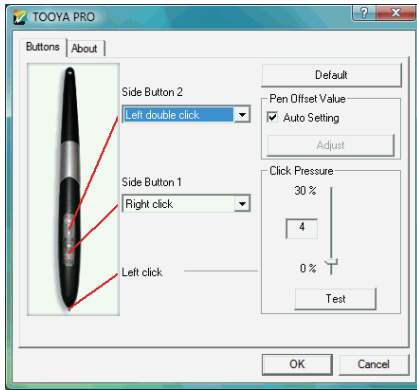
Execute Applications -> TOOYA.

On the **About** tab, the tablet size can be chosen in centimeters or inches. The model of tablet and version are shown on this page too. You can also select pen mode or mouse mode here.

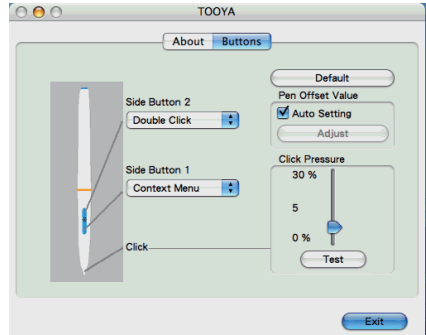


## Pen Settings

The pen is used like a normal writing pen. On the About tab, make sure the **Tracking Mode** is set to **Pen**.



Windows® Vista™



Mac OS X

### \* Side Button

On the **Buttons** tab, click **Side Button 1** to customize the side button.

### \* Default Settings

Side Button 1 = right click

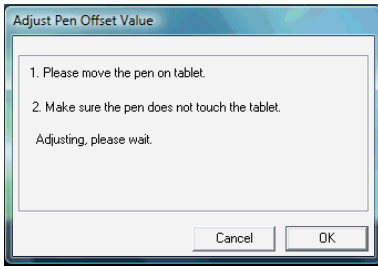
Side Button 2 = left double click

Pen Point = left click

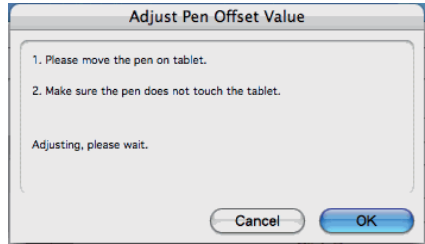
### \* Pen Offset Value

When using the tablet, if you want to use a new pen without restarting the computer, you need to perform the Pen Offset Value setting.

1. On the **Buttons** tab, clear the **Auto Setting** box to remove the former value.
2. Click **Adjust**. Then follow the onscreen instructions for adjustment. Click **OK** when the **OK** message appears.
3. Select the **Auto Setting** box for your computer to detect the new pen offset value automatically when restarted.



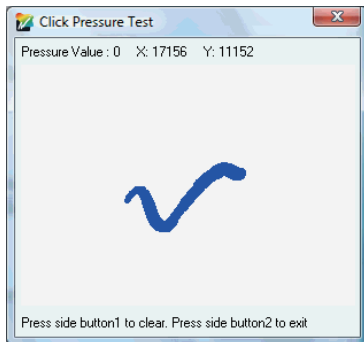
Windows® Vista™



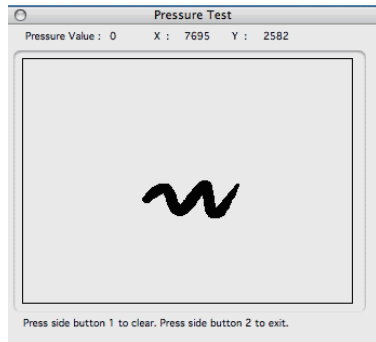
Mac OS X

\* Click Pressure

1. On the **Buttons** tab, move the slider up and down to adjust the pen pressure from 0 to 30 (0 is the lightest, and 30 is the heaviest).
2. Click **Test** to launch the **Click Pressure Test** writing area. Then you can test if the setting is correct.



Windows® Vista™



Mac OS X



## Free Manuals Download Website

<http://myh66.com>

<http://usermanuals.us>

<http://www.somanuals.com>

<http://www.4manuals.cc>

<http://www.manual-lib.com>

<http://www.404manual.com>

<http://www.luxmanual.com>

<http://aubethermostatmanual.com>

Golf course search by state

<http://golfingnear.com>

Email search by domain

<http://emailbydomain.com>

Auto manuals search

<http://auto.somanuals.com>

TV manuals search

<http://tv.somanuals.com>