



**PD - 450 - 01**

PDHercules CDRW Jukebox

# User Manual



Copyright© 2003 Perception Digital Limited. All rights reserved.

0203

<b>CONTENTS .....</b>	<b>2</b>
<b>1. INTRODUCTION .....</b>	<b>4</b>
1.1 ABOUT PDHERCULES CDRW JUKEBOX.....	4
1.2 SAFETY .....	6
1.3 TECHNICAL INFORMATION AND SPECIFICATION .....	8
1.4.1 <i>Setting up with your Hi-Fi or Amplifier</i> .....	10
1.4.2 <i>Using the Headphone</i> .....	11
1.4.3 <i>Accessories</i> .....	11
1.4.4 <i>Connecting to A Computer</i> .....	11
1.5 MAINTENANCE .....	12
<b>2. USING CDRW JUKEBOX .....</b>	<b>13</b>
2.1 LEARNING THE OPERATIONS.....	13
2.1.1 <i>Powering On-Off</i> .....	13
2.1.2 <i>Using Gracenote CDDB<sup>®A2</sup> For Matching CD Title</i> .....	14
2.1.3 <i>Recording</i> .....	15
2.1.4 <i>Play from CD</i> .....	17
2.1.5 <i>Play from Hard Drive</i> .....	17
2.1.6 <i>Burning CD</i> .....	20
<i>Select System in main menu.     Select Blank Disc option.</i> .....	22
2.1.7 <i>Searching (Album, Artist or Song)</i> .....	23
2.1.8 <i>Number Search</i> .....	23
2.1.9 <i>Creating Playlist</i> .....	23
2.1.10 <i>Using Temporary List</i> .....	24
2.1.11 <i>Editing Files (Album, Artist, Song or Playlist)</i> .....	25
2.1.12 <i>Deleting Files (Album, Artist, Song or Playlist)</i> .....	25
2.1.13 <i>Sound Effect</i> .....	25
2.1.14 <i>Play Mode</i> .....	26
2.1.15 <i>Jukebox Status</i> .....	26
2.2 ADDITIONAL FEATURES.....	27
2.2.1 <i>Compressing Files Stored in Hard Drive</i> .....	27
2.2.2 <i>Play from Line-In</i> .....	27
2.3 SYSTEM INFORMATION .....	28
2.3.1 <i>Voice Prompt</i> .....	28
2.3.2 <i>Capacity</i> .....	28
2.3.3 <i>Version Number</i> .....	28
2.3.4 <i>Record Setting</i> .....	29

2.3.5	Format Hard Drive.....	29
<b>3.</b>	<b>SMARTMEDIA™ CARD .....</b>	<b>30</b>
3.1	DOWNLOADING TO SMARTMEDIA™ CARD .....	30
3.2	BROWSING SMARTMEDIA™ CARD.....	30
3.3	CHECKING SMARTMEDIA™ CARD STORAGE .....	30
3.4	FORMATTING SMARTMEDIA™ CARD.....	31
<b>4.</b>	<b>JOCKEY FOR CDRW JUKEBOX.....</b>	<b>32</b>
4.1	ABOUT JOCKEY.....	32
4.2	INSTALLING JOCKEY FOR CDRW JUKEBOX.....	32
4.3	SETTING UP JOCKEY FOR CDRW JUKEBOX.....	33
4.4	USING JOCKEY .....	34
4.4.1	Downloading MP3 Files from PC.....	34
4.4.2	Matching Untitled Album via Gracenote CDDB®* On-line Database.....	35
4.4.3	Creating Playlist Using Jockey .....	36
4.4.4	Editing Playlist .....	36
4.4.5	Editing Files .....	36
4.4.6	Deleting Files .....	36
4.4.7	File Playback.....	37
4.4.8	Jukebox Software Upgrade.....	37
4.4.9	Jockey Upgrade.....	37
4.4.10	CDDB® Update .....	37
<b>5.</b>	<b>TROUBLE SHOOTING.....</b>	<b>39</b>
<b>7.</b>	<b>COMPANY CONTACTS.....</b>	<b>42</b>

# 1. Introduction

Thank you for purchasing the PDHercules CDRW Jukebox!

PDHercules CDRW is a remarkable **readable** and **writable** digital recordable jukebox that follows on the successful launch of the PDHercules Digitable Jukebox series. It allows you to select your own digital music and burn it on a CD without a computer. This is yet another step merging digital entertainment with conventional home audio system. Now storing and making your own CD is easier than ever.

## 1.1 About PDHercules CDRW Jukebox

Our CDRW Jukebox is equipped with these excellent features:

### **Burn Audio and MP3 CD without a PC**

With CDRW Jukebox, you can freely select the music of your choice and burning on a CD-R for audio or CD-RW for audio disc anytime with ease. Whether you would like a regular audio CD or MP3 data CD, it is completely computer free. The Jukebox is especially designed with a one-touch burn function to make burning a CD fun and enjoyable!

### **Gracenote CDDB® Music Recognition Service <sup>SM</sup> \***

CDRW Jukebox comes with an offline version of the Gracenote CDDB® service with information on over 425,000 CD's. The database is upgradable via software download via USB or through CD.<sup>1</sup> Now you don't need an Internet connection to tag your music.

### **Encodes Audio CD without a PC**

With regular audio CD, CDRW Jukebox has a CD ripping function that enable up to 6x real time ripping speed of transferring the CD data to the hard drive. Encoding music to MP3 is no longer a computer specialty.



\*Music recognition technology and related data are provided by Gracenote and the Gracenote CDDB® Music Recognition Service. Gracenote is the industry standard in music recognition technology and related content delivery. For more information visit [www.gracenote.com](http://www.gracenote.com).

<sup>1</sup>Upgrade method subject to change per latest software development. Updated details is posted on our official website: [www.perceptiondigital.com](http://www.perceptiondigital.com).

**High Speed Transfer of MP3 CD**

With MP3 data CD, CDRW Jukebox even rips at a greater speed. The entire MP3 data could be transferred to the hard drive in a minute and songs are transferred in terms of a few seconds.

**Large Hard Drive Storage**

Transforming the conventional storage media, CDRW Jukebox is equipped with a hard drive for hundreds of hours of digital music. Depending on your model, the hard drive size ranges from 20GB, 40GB, 60GB or more. With several of our compression option, you can choose among 128kbps, 320kbps or original quality (uncompressed) for maximum quality satisfaction.

**Large LCD Two-Way IR Remote**

Unlike other consumer electronics, CDRW Jukebox is partnered with a two-way infrared remote for control at a distant. It is designed with a large LCD display and user friendly buttons for easy of navigation.

**SmartMedia™ Card**

Considering mobility, CDRW Jukebox also has a SmartMedia™ Card output for portable units that supports standard SmartMedia™ Card.

**PDJockey Hard Drive Management Program**

With our PDJockey program, you can easily download MP3 songs from your PC, match albums titles via on-line database and manage the your Jukebox collection by creating playlist, deleting songs, editing information or perform firmware upgrade.

Overall, it is an absolutely wise choice to include a PDHercules CDRW Jukebox at home. Large storage, convenience, flexibility and quality all in one unit.

## 1.2 SAFETY

This unit employs a laser. Due to the risk of eye injury, only a qualified service person should remove the cover or attempt to service this device. To reduce the risk of fire or electric shock, do not expose this apparatus to rain or moisture.

Never make or change connections when the power is still switched on.



Uninsulated dangerous voltages present that may constitute a risk of electric shock.



**Caution :**  
To prevent the risk of electric shock, do not remove the cover (or back). No user-serviceable parts inside. Refer servicing to qualified service personnel.



Please refer to important operating and maintenance (servicing) instructions in the literature accompanying this appliance.

### Important Safety Instructions:

1. Read these instructions.
2. Keep these instructions.
3. Heed all warnings.
4. Follow all instructions.
5. Do not use this apparatus near water.
6. Clean only with a dry cloth.
7. Do not block any of the ventilation openings - install in accordance with the manufacturer's instructions.
8. Do not install near any heat sources such as radiator, heat registers, stoves or other apparatus (including amplifiers) that produce heat.
9. Do not defeat the safety purpose of the polarized or grounding-type plug. A polarized plug has two blades with one wider than the other. A grounding type plug has two blades and a third grounding prong. The wide blade or the third prong is provided for your safety. If the provided plug does not fit into your outlet, consult an electrician for replacement of the obsolete outlet.
10. Protect the power cord from being walked on or pinched particularly at plugs convenience receptacles, and the point where they exit from apparatus.
11. Only use attachment/accessories specified by the manufacturer.
12. Use only with the cart, stand, tripod bracket or table specified by the manufacturer, or sold with the apparatus. When a cart is used, use caution when moving the cart/apparatus combination to avoid injury from tip-over.
13. Unplug this apparatus during lightening storms or when unused for long periods of time.

14. Refer all servicing to qualified service personnel. Servicing is required when the apparatus has been damaged in any ways, such as power-supply cord or plug is damaged, liquid has been spilled or object has fallen into the apparatus, the apparatus has been exposed to rain or moisture, does not operate normally, or has been dropped.

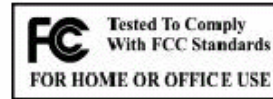
If the Jukebox suddenly froze or has no response, it may be caused by electrostatic phenomenon. In this circumstances, please follow the procedures below for recovery:

1. Switch off the Jukebox power on the back panel.
2. Turn on the power on the bank panel again and power on the main unit.

### **FCC Rules & Warning:**

This device complies with Part 15 of the FCC Rules. Operation is subject to the following two conditions:

1. This device may not cause harmful interference; and
2. This device must accept any interference received including interference that may cause undesired operation.



Changes or modifications not expressly approved by the party responsible for compliance could void the user's authority to operate the equipment.

### **Warning:**

Under no circumstances should you attempt to repair the Jukebox yourself as this will expose you to unnecessary hazards.

No outdoor use for the Jukebox.

### **Legal Warning:**

1. Some copying may require the permission of the relevant copyright owner. We do not have the authority to grant any such permission.
2. Supply of this product only conveys a license for personal, private and non-commercial use and does not convey a license nor imply any rights to use this product in real time broadcasting (terrestrial, satellite, cable, or other media) or broadcasting via the internet or other networks, such as but not limited to intranets or in pay-audio or audio-on-demand applications. An independent license for such use is required.
3. The company assumes no responsibility to use the contents stored in the internal hard disk.

## 1.3 TECHNICAL INFORMATION AND SPECIFICATION

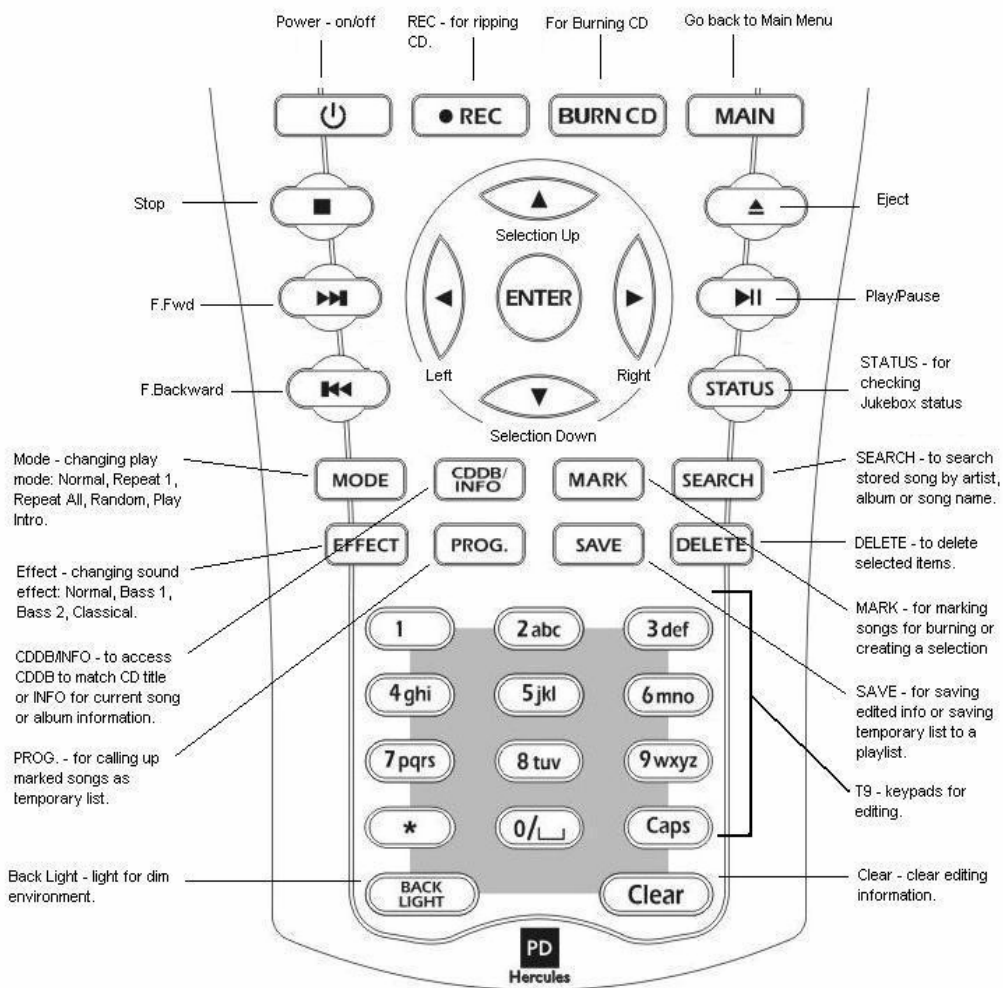
### Main Unit

<b>Physical</b>	
Size	430 x 300 x 95 mm (L x W x Ht.)
Weight (Net)	6 kg
Weight (Gross)	7.25 kg
Hard Drive Capacity	Ranges from 20GB and up, depends on model.
LCD	16 characters x 2 rows with LED backlight Size: 64.5mm x 16mm (Visual Area)
<b>Electrical</b>	
AC Voltage	AC 100-240V, 50Hz/ 60Hz
Max Power	50 W
<b>Supported Playable Format</b>	
Compatible CD Type	Audio CD, CD ROM, MP3 CD, CD-R, CD-RW
Audio Format	CD-DA
Data Format	CDROM MODE 1, CDROM MODE 2 F1
<b>Supported Recording Format</b>	
Audio Format	CD-DA (Disc-At-Once)
Writable CD Type	CD-R for Audio, CD-RW for Audio
Data Format	Mode 1 (Session-At-Once with multisession support) Filesystem for Data CD conforms to ISO9660 with Joliet Extension
<b>Others</b>	
Data Transfer Port	USB Port
Output Media	SmartMedia™ Card
Digital Audio Out	Optical SPDIF Consumer format
Analog Audio In/Out	RCA
Database	Upgradable Gracenote CDDB® Music Recognition Service
Digital Audio Format	MP3, WAV
Frequency Range	20Hz - 20kHz
Signal to Noise Ratio	90 dB
Total Harmonic Distortion	< 0.1%



## Remote Unit

LCD	Visual Area Size: 70mm x 40.5 mm Contrast: FSTN Backlight: White EL
Communication	Two-way Infrared
Battery	4 x AA

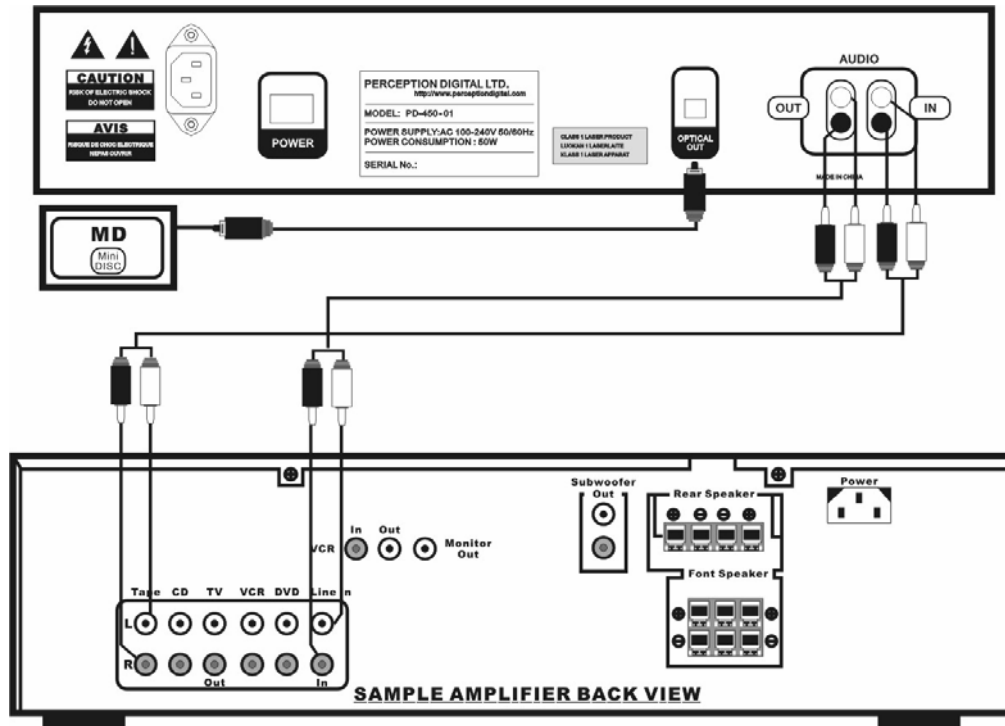


## 1.4 SETTING UP

### 1.4.1 Setting up with your Hi-Fi or Amplifier

PDHercules CDRW Jukebox requires you to connect to a Hi-Fi system or an amplifier for audio output. Another option is to listen to the music via the headphone connection on the front.

- (1) Locate the audio output jack at the back of the Jukebox.
- (2) Connect the Jukebox's audio output to a Hi-Fi or amplifier's line-in input using the provided RCA cable.



### **1.4.2 Using the Headphone**

You can choose not to connect the Jukebox to an amplifier and still enjoy the music via the headphone jack located in the front panel.

- (1) Prepare a headphone and connect it to the headphone jack located in the front panel.

*Note: Please beware that the volume could be very loud. Turn the volume down before you put the headphone close to your ears.*

### **1.4.3 Accessories**

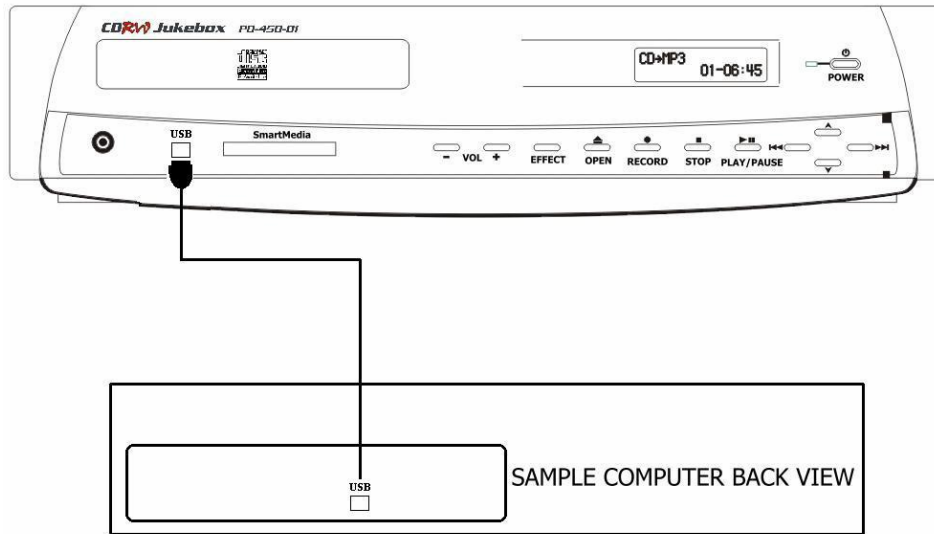
With your purchase, you will find the following items included along with your main unit.

- 1- Power Cord
- 1- RCA Cable
- 4- AA Batteries
- 1- Two-way IR Remote
- 1- User manual

### **1.4.4 Connecting to A Computer**

You will need to connect to your PC for MP3 files download or hard drive management.

- (1) Prepare a standard USB cable (not included).
- (2) Connect the USB cable from the front of the jukebox to the USB port at the back of your PC (see following figure).
- (3) The jukebox will detect the connection automatically. The main unit will display "USB".
- (4) Follow the section on PDJockey to begin operations.



## 1.5 Maintenance

Clean the Jukebox with a soft lint-free cloth. Do not use any cleaning agents as they may have a corrosive effect. Do not expose the Jukebox or batteries to humidity, rain, direct sunlight or excessive heat.

It is not recommended to turn off the Jukebox power using the switch on the back. Keeping it in the sleep mode when not in use is a better maintenance practice.

## 2. USING CDRW Jukebox

### 2.1 Learning the Operations

This section guides you step by step to the functions, features and operations of the CDRW Jukebox using the *remote*. Buttons share on the main unit operates the same as the remote.

#### 2.1.1 Powering On-Off

##### Power On

- (1) Turn on the **MAIN POWER** switch at the back of CDRW Jukebox.
- (2) Press **POWER** to turn on the Jukebox. It will go through a system checking progress.

##### Power Off

- (1) Press **POWER** once to turn off the Jukebox. It will go into sleep mode.
- (2) If necessary to turn off the Jukebox completely, turn the **MAIN POWER** switch off at the back of the Jukebox. However, it is not recommended to do it everytime after use.

*Note: After power off, the Jukebox will enter a OS back up mode. It is only a system maintenance process, do not be alarmed. You can abort this and resume operation by pressing the power key again. Or you can just let it run though the program.*

##### Power On from Sleep Mode

- (1) The Jukebox will enter a sleep mode if not in operation. To resume, press **POWER** once to wake up the jukebox.

## 2.1.2 Using Gracenote CDDB<sup>®</sup> A2 For Matching CD Title

The upgradable Gracenote CDDB<sup>®</sup> Service is an excellent feature that has over 425,000 album titles and tracks information ready in the jukebox to help you in identifying the content of your CD. We are among the first hard drive based consumer electronics that has incorporated this off-line database for your convenience.

### For Recording

- (1) Press **EJECT** to open the CD tray.
- (2) Insert CD and close the tray.
- (3) Press **REC** and the Jukebox will automatically search the internal Gracenote database for the best title match.

### For Information

- (1) Press **EJECT** to open the CD tray.
- (2) Insert CD and close the tray.
- (3) In the main menu, select CD and press **INFO**. Please wait while the Jukebox searches for the correct match. If the search is successful, the album name will be displayed.
- (4) With the matched album title, press **ENTER** to view the song names.

*Note1: This database does not apply to MP3 CD or any other CDs besides original audio CDs.*

*Note2: Gracenote CDDB database can be upgraded through software provided at our website. There will be options for USB download directly from a PC or CD writable file to make your own upgrade CD. For instructions and details to upgrade your jukebox, please visit the download section of our website: [www.perceptiondigital.com](http://www.perceptiondigital.com).*

*A2 - Please refer to Appendix item 2.*

### 2.1.3 Recording

User can record directly from CD, MP3 CD, or various line-in sources with different speed and compression rate.

#### Recording the Entire CD

- (1) In the main menu, select CD.
- (2) Press **REC** to enter the record menu.
- (3) Select compress bit rate (Optional). Please (▶) to choose from 128kbps, 320kbps, or CD Quality.
- (4) Scroll up to select your recording option. Rapid Archive, Compress, or Play and Compress.
- (5) Press **REC** to begin recording. The internal Gracenote Database will automatically check the CD titles. Once matched, you will see the song name displayed on the main unit display.

#### Notes:

- a. Recorded music is not yet in MP3 format if rapid archive is used. It will be compressed into MP3 while the Jukebox II is in sleep mode.
- b. Recording a new CD under an existing artist will automatically append all the songs to the artist in alphabetic order.

#### Recording Selected Songs from CD

- (1) In the main menu, select CD.
- (2) Press **ENTER** to browse through the CD.
- (3) **MARK** the desired songs. Marked songs will have a "●" after the title.
- (4) Press **PROG.** to review your selection in the temporary list. (Press **MARK** to delete songs in the temporary list or go through the mark song process to add songs.)
- (5) When finished, press **REC** again to enter into the Temporary List Record Menu.
- (6) Select compress bit rate (Optional). Please (▶) to choose from 128kbps, 320kbps, or CD Quality.
- (7) Scroll up to select your recording option: Rapid Archive, Compress, or Play and Compress. Rapid archive is for ripping; compress is for instant compression to hard drive; and play and compress is for playing and compressing at the same time.
- (8) Press **ENTER** to confirm.

#### Notes:

- a. SmartMedia™ Card download is not available when selected songs from CD.
- b. If rapid archive is used, the data is not yet in MP3 format. It will be compressed into MP3 while the Jukebox is in sleep mode.

*c. Recording a new CD under an existing artist will automatically append all the songs to the artist in alphabetic order.*

*d. If you record the same CD twice, the files will be doubled under the same file name. This does not apply to MP3 CD.*

### **Line-In Recording**

CDRW Jukebox allows you to record other sources such as MD, tape or vinyl record via line-in input.

- (1) Connect your music source output to the CDRW Jukebox audio input jacks located in the back of the unit.
- (2) In the main menu, select Line-In. Press **ENTER**.
- (3) Select compress bit rate (Optional). Please (▶) to choose from 128kbps, 320kbps, or original quality.
- (4) Scroll up to select Play and Compress.
- (5) Turn your music source on and press **REC**.
- (6) Press **STOP** when finished.

#### *Notes:*

*a. The line-in recording will be in a single file from the time you press the REC and the STOP button. If you desire separation between music files, you have to press the STOP button in between recording.*

*b. A default file name will be given to all line-in recording files.*



## 2.1.4 Play from CD

### Play Entire CD

- (1) Press **EJECT** to open the CD tray.
- (2) Insert CD.
- (3) Press **EJECT** to close the CD tray.
- (4) Select CD, press **ENTER** to begin playing the entire CD.

### Play Selected Song from CD

- (1) Select CD, press **ENTER** to browse tracks.
- (2) Select the desired song.
- (3) Press **ENTER** to begin playing the selected song and onwards.

## 2.1.5 Play from Hard Drive

There are five options in playing from the hard drive. HDD(Album), HDD(Artist), Playlist, Last 20 and Top 20.

### Selecting Play by HDD(Album)

#### Play Entire Hard Drive by Album

- (1) In the main menu, select HDD(Album).
- (2) Press (**▶/||**) to begin playing every song in the hard drive.

#### Play Selected Album

- (1) In the main menu, select HDD(Album).
- (2) Press **ENTER** to browse albums available.
- (3) Select the desired album.
- (4) Press (**▶/||**) to begin playing every song in the album.

#### Play Selected Song

- (1) In the main menu, select HDD(Album).
- (2) Press **ENTER** to browse albums available.
- (3) Select the desired album.
- (4) Press **ENTER** to browse through songs.
- (5) Select the desired song.
- (6) Press (**▶/||**) to begin playing the selected song and onwards.

## Selecting Play by HDD(Artist)

### Play Entire Hard Drive by Artist

- (4) In the main menu, select HDD(Artist).
- (2) Press (▶/⏏) to begin playing every song in the hard drive.

### Play Selected Album

- (1) In the main menu, select HDD(Artist).
- (5) Press **ENTER** to browse artists available.
- (6) Select the desired artist name.
- (4) Press (▶/⏏) to begin playing every song in the artist selected.

### Play Selected Song

- (1) In the main menu, select HDD(Artist).
- (2) Press **ENTER** to browse artists available.
- (3) Select the desired artist name.
- (4) Press **ENTER** to browse through the songs available.
- (5) Select the desired song.
- (6) Press (▶/⏏) to begin playing the selected song and onwards.

## Selecting Play by Playlist

### Play All Playlists

- (1) In the main menu, select Playlist.
- (2) Press (▶/⏏) to begin playing every file available in the entire playlist category.

### Play Selected Playlist

- (1) In the main menu, select Playlist.
- (2) Press **ENTER** to browse through the playlist available.
- (3) Select the desired playlist.
- (4) Press (▶/⏏) to begin playing every song in the chosen playlist folder.

### Play Selected File from Playlist

- (1) In the main menu, select Playlist.
- (2) Press **ENTER** to browse through the playlist available.
- (3) Select the desired playlist.
- (4) Press **ENTER** to browse the songs in the playlist.
- (5) Select the desired song.
- (6) Press (▶/⏏) to begin playing the selected song and onwards.

## **Play by Last 20 and Top 20**

CDRW Jukebox automatically stores all your favorite last 20 and top 20 songs played.

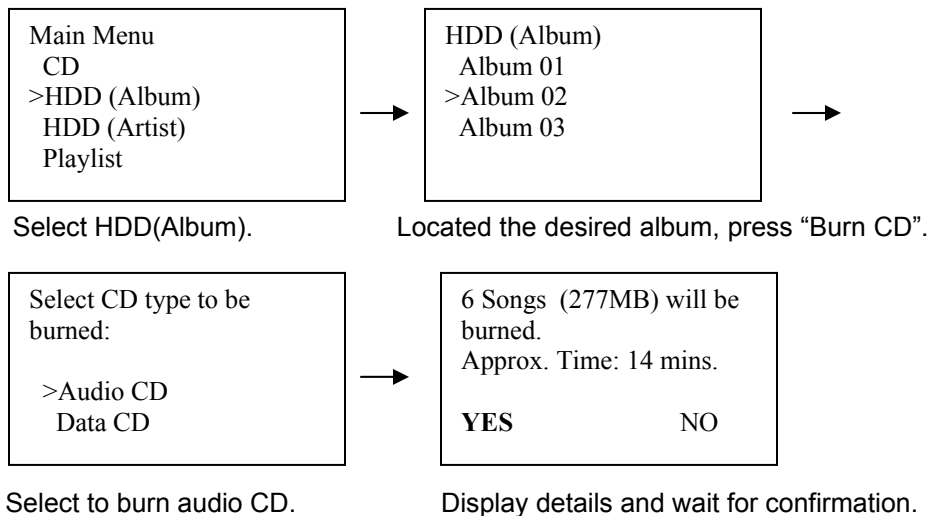
- (1) In the main menu, select Last 20 or Top 20.
- (2) Press (**▶/⏮**) to play the entire list.  
Or Press **ENTER** to select the desired song.
- (3) Press (**▶/⏮**) to play the selected song.

## 2.1.6 Burning CD

### Burn Audio CD

- (1) Insert a CD-RW for audio or a blank CD-R for audio to the Jukebox CD-RW drive
- (2) In the main menu, select HDD(Album) or HDD(Artist) using the **UP** and **DOWN** arrow key. Then press **ENTER** to go into the album/artist menu.
- (3) In the album/artist menu, select the desired album to be burned and press **BURN CD** on the remote.
- (4) It'll ask you to burn audio CD or data CD. Select Audio CD and press **ENTER** to confirm.
- (5) After confirming the CD type and space, the jukebox will provide you with the burning time.
- (6) In case there is any content in a CD-RW, CDRW Jukebox blanks the disc to be blanked before proceeding.
- (7) Press **ENTER** while "YES" is highlighted to confirm.
- (8) If decided not to proceed further, use the **RIGHT** arrow key to highlight "NO" and press **ENTER**.
- (9) After the burning process is completed, the CD tray will open automatically to indicate completion.

*Note: Audio CD has the capacity of storing approximately 10-15 songs. Compressed MP3 or original quality music are both recordable on the CD-RW or CD-R for audio disc.*



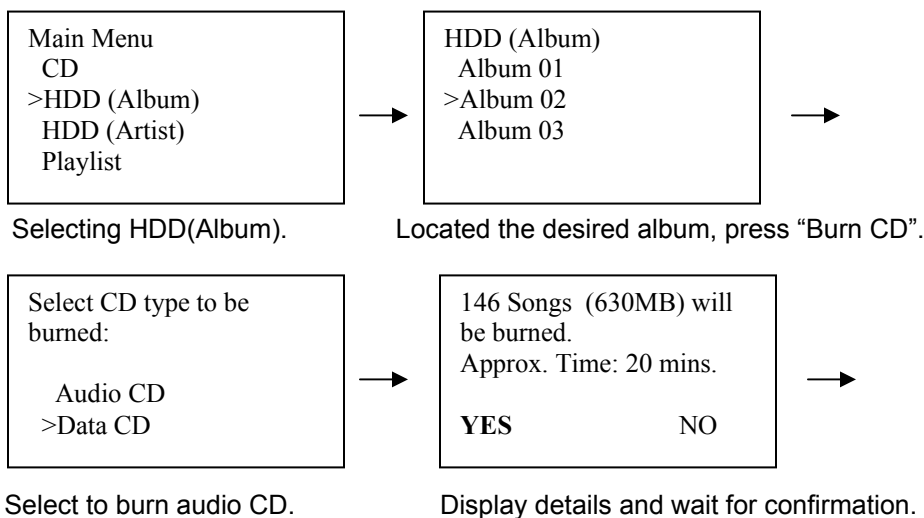
After the confirmation, the LCD on the main unit shows the progress of the CD burning process in percentage.

CD Burning Burning... 23%
------------------------------

**Burn MP3 Data CD**

- (1) Insert a CD-RW for audio or CD-R for audio to the Jukebox CD-RW drive.
- (2) In the main menu, select HDD(Album) or HDD(Artist) using the **UP** and **DOWN** arrow key.
- (3) Then press **ENTER** to go into the album/artist menu.
- (4) In the album/artist menu, select the desired album to be burned and press **BURN CD** on the remote.
- (5) It'll ask you to burn audio CD or data CD. Select Data CD and press **ENTER** to confirm.
- (6) After confirming the CD type and space, the jukebox will provide you with the burning time.
- (7) In cases where the CD already has content that is of a different data type, it will require the CD to be blanked before proceeding.
- (8) Press **ENTER** while "YES" is highlighted to confirm.
- (9) If decided not to proceed further, use the **RIGHT** arrow key to highlight "NO" and press **ENTER**.
- (10)After the burning process is completed, the CD tray will open automatically to indicate completion.

*Note: Data or Mp3 CD have the capacity of storing approximately 100-150 songs. If the song is recorded in original CD quality, it cannot be recorded to the CD-R or CD-RW for audio disc.*



After the confirmation, the LCD on the main unit shows the progress of the CD burning process in percentage.

CD Burning Burning... 43%
------------------------------

### Blank CD

Blanking a CD means you would like to disregard the previous content on a disc to have a fresh start. This is especially required when you want to burn MP3 data on a disc already filled with audio tracks or vice versa. Blanking CD only applies to CD-RW for audio.

- (1) In the main menu, select System. Press "Enter".
- (2) To confirm blanking the CD, press "Enter" while the 'YES' is highlighted.

*Note: Once confirmed, the blank CD operation cannot be aborted.*

Main Menu Line in Smart Media >System
--

Select System in main menu.

System Config Record Setting Format HDD >Blank Disc
--

Select Blank Disc option.

Blank Disc This disc will be blanked. Confirm?  Yes No
--

Confirming blank disc.

## 2.1.7 Searching (Album, Artist or Song)

CDRW Jukebox allows you to search album, artist, song using key word search.

- (1) Press **SEARCH**.
- (2) Select search by Album, Artist or by Song. Press **ENTER**.
- (3) Use the **T9** buttons to enter the name.
- (4) When finished, press **SAVE**.
- (5) Display will show matched result when successful. Press **ENTER** to view album or press (**▶/⏮**) to begin playing the song.
- (6) When there is no match, no result will be displayed. Please repeat the search with different information.

## 2.1.8 Number Search

Number search is a convenient feature that allow you to input a number and the pointer will automatically jump to this selection for you. In the album, artist or song menu, you will find a number representation on the bottom of the screen.

- (1) In the album, artist or song menu, locate the number that represents the album, the artist or the song you would like to select.
- (2) Enter the number using the T9 buttons until you have input the entire number. Use the **CLEAR** button to backspace.
- (3) Press the **SAVE** button for the pointer to jump to the selection.

*Notes:*

- a. If you have input an invalid number, the pointer will remain in the previous position.*
- b. When some entries are deleted, the number will adjust accordingly.*

## 2.1.9 Creating Playlist

Playlist is for groupings in the hard drive by the same category defined by the user. You can create playlists according to music genre, individual favourites, seasonal entertainment, or group your audio books.

- (1) While browsing the entire hard drive, **MARK** the files you would like to include in the playlist. Press **MARK** again to deselect the files.
- (2) When finished, press **PROG** to display the list of marked songs in the temporary list. If desired to delete files in the temporary list, press the **MARK** button.
- (3) Press **PROG**. when finished and songs will append files to the bottom of the temporary list.
- (4) Press **SAVE** to confirm creating the playlist.

- (5) A default playlist name will be given. If desired to edit the playlist name, press **ENTER** for the cursor to appear.
- (6) Use (▶) and (◀) button to move the cursor and use the **CLEAR** button for erasing entry.
- (7) Press **SAVE** to store the new playlist name when finished.

### 2.1.10 Using Temporary List

Temporary list is a temporary place for storing all your selections ready for rapid archive, compress or SmartMedia™ Card download. For SmartMedia™ Card download, only compressed files are allowed.

- (1) While browsing the entire hard drive, **MARK** the files you would like to include in the playlist. Press **MARK** again to deselect the files. Marked songs will have a "●" after the title. You can select to mark the entire folder or a song.
- (2) **MARK** the desired songs. Marked songs will have a "●" after the title.
- (3) Press **PROG.** to review your selection in the temporary list. (Press **MARK** to delete songs in the temporary list or go through the mark song process to add songs.)
- (4) When finished, press **REC** again to enter into the Temporary List Record Menu.
- (5) Select compress bit rate (Optional). Please (▶) to choose from 128kbps, 320kbps, or CD Quality.
- (6) Scroll up to select your recording option: Rapid Archive, Compress, or Play and Compress. Rapid archive is for ripping; compress is for instant compression to hard drive; and play and compress is for playing and compressing at the same time.
- (7) Press **ENTER** to confirm.

*Notes:*

- a. If a temporary list was created before and the Jukebox has not been turned off, the newly marked songs will be appended to the bottom of the existing song list.*
- b. Once the Jukebox has changed to the sleep mode, the temporary list will be lost.*
- c. Only one temporary list is allowed at one time.*



### 2.1.11 Editing Files (Album, Artist, Song or Playlist)

- (1) To edit a file name, select the file and press **CDDB/INFO**.
- (2) Press **ENTER** for the cursor to appear.
- (3) Use (**◀**) and (**▶**) button to move the cursor left and right and use the (**▲**) and (**▼**) button to move the cursor up and down. Use the **CLEAR** button to erase characters.
- (4) Enter the desired title using the **T9** buttons group. The **T9** buttons are the numeric keys located on the bottom of the remote with alphabets. You can use the **CAPS** key change from capital letter and small letters input.
- (5) Press the button contains the desired letter. For the next letter to appear, press the button again. Numerals will come after the letters. Once the button is released after one second, the cursor will jump to the next space automatically. You can begin entering the next letter then.
- (6) When finished, press **SAVE**.

### 2.1.12 Deleting Files (Album, Artist, Song or Playlist)

You can delete songs, albums, or playlist in two ways. One method is to use the remote control and the second method is to use the PDJockey for CDRW Jukebox. (Please refer to the PDJockey section)

- (1) Find the files you would like to delete.
- (2) Press **DEL**. It will ask you for confirmation. While the "YES" is being highlighted, press **ENTER**. If desired not to delete the selection, press the (**▶**) key to highlight "NO" and press **ENTER**. Once the files have been deleted, it is permanently removed from the hard drive.





### 2.1.13 Sound Effect

CDRW Jukebox offers four distinct sound effects for different type of music. They are Normal, Bass1, Bass2 and Classic.

- (1) Press the **EFFECT** button to display current sound effect mode.
- (2) Press **EFFECT** again for the next selection. Release the button and the screen will automatically jumps back to previous menu.

### 2.1.14 Play Mode

CDRW Jukebox offers five different play modes. They are Normal, Repeat One, Repeat All, Random and Intro.

Play Mode	Icon	Characteristics
Normal		Normal play, with no repeat or shuffle.
Repeat One		Repeat the current playing track.
Repeat All		Repeat all the tracks in that folder.
Random		Randomly play the tracks in that folder.
Intro		Play the first 20 seconds of all the tracks in that folder.

- (1) Press the **MODE** button to display the current play mode.
- (2) Press **MODE** again for the next selection. Release the button and the screen will automatically jumps back to previous menu.

### 2.1.15 Jukebox Status

You can check the Jukebox status anytime. It gives you a quick access from the remote to the current operations of the Jukebox.

- (1) Press the **STATUS** button anytime. The remote will display the current status accordingly.
- (2) Press **MAIN** to go back to the main menu.

## 2.2 Additional Features

This section shows you some of the CDRW Jukebox functions that are not frequently used, but you may need it sometimes.

### 2.2.1 Compressing Files Stored in Hard Drive

You can choose to compress archived songs instantly without waiting for the Jukebox to enter into sleep mode. This only applies to songs that are uncompressed, usually happens when you have just finished archived an audio CD. Uncompressed songs has a music note in front, compressed songs has a music note with a 'M' tail.

- (1) Select the song and press **REC**.
- (2) If it is an uncompressed song, the only option in the Record Menu is to compress. Press **ENTER** to confirm.

*Note: If it is a compressed song, the only option is download to SMC. Details please refer to the SmartMedia Card download section.*

### 2.2.2 Play from Line-In

CDRW Jukebox allows you to play directly from line-in from any audio source. This audio source can be a FM radio, MD, cassette player, vinyl record machine etc. When the jukebox is connected to an amplifying system, it becomes a channel for amplifying music.

- (1) Connect an audio source to the line-in jack located at the back of the Jukebox.
- (2) Begin playing the audio source.
- (3) In the main menu, select line-in. Press (▶/||) to begin playing the music from the audio source.

## 2.3 System Information

There are various system options and information available in the CDRW Jukebox.

- (1) In the Main Menu, select System.
- (2) Press **ENTER**.
- (3) The System Menu gives you five options. Voice Prompt, Capacity, Version Number, Record Setting and Format HDD.

### 2.3.1 Voice Prompt

You can choose to disable every voice prompt, disable the voice greeting only or enable all.

- (1) In the Main Menu, select System. Press **ENTER**.
- (2) Select Voice Prompt. Press **ENTER**.
- (3) Choose among Disable All, Disable Greeting or Enable All.
- (4) Press **ENTER** to confirm. The screen will refresh to the System Menu after the confirmation.

### 2.3.2 Capacity

You can check the capacity of the Jukebox for remaining and used storage size and minutes.

- (1) In the Main Menu, select System. Press **ENTER**.
- (2) Select Capacity. Press **ENTER**. The screen will display the following storage information: Total Size, Remaining Size, After Compression, and Remaining Minutes.

### 2.3.3 Version Number

You can check the version number of the Jukebox here.

- (1) In the Main Menu, select System. Press **ENTER**.
- (2) Select Version Number. Press **ENTER**. The screen will display version information.

### 2.3.4 Record Setting

You can change the CD and line-in record compression rate here.

- (1) In the Main Menu, select System. Press **ENTER**.
- (2) Select Record Setting. Press **ENTER**.
- (3) To change CD recording compression rate, select CD Recording.
- (4) Press the **ENTER** button to change among 128kbps, 320kbps and CD Quality.
- (5) To change line-in recording compression rate, select Line-In Recording.
- (6) Press the **ENTER** button to change among 128kbps, 320kbps and Original Quality.

### 2.3.5 Format Hard Drive

- (1) In the Main Menu, select System. Press **ENTER**.
- (2) Select Format HDD. Press **ENTER**.
- (3) The system will prompt you for confirmation. While "YES" is highlighted, press **ENTER** to confirm, or use the (▶) key to highlight "NO" and press **ENTER** to cancel formatting the hard drive.

*Note: Once the hard drive is formatted, all the data will be removed and not recoverable.*

### 3. SmartMedia™ Card

CDRW Jukebox supports 32MB and 64MB SmartMedia™ Card download.

*Note: Uploading from SMC to Jukebox is not supported.*

#### 3.1 Downloading to SmartMedia™ Card

- (1) Insert a SmartMedia™ Card into the card slot.
- (2) Select a compressed song to be downloaded and press **REC**.
- (3) The only option here is to download to SMC. Press **ENTER** to confirm.
- (4) To download more than one song, press the **MARK** button to select all desired songs.
- (5) When finished, press **PROG.** to display the list of marked files in the temporary list.
- (6) In the temporary list, press **REC** to enter the record menu.
- (7) Select Download to SmartMedia™ Card. All the files in the temporary list will be downloaded to the SmartMedia™ Card.

*Notes:*

*a. If the SmartMedia™ Card is not formatted or in the incorrect format, the system will prompt you to reformat the card. All the information on the card will be erased once formatted.*

*b. Only files stored in the hard drive already in MP3 format will be downloadable to the SmartMedia™ Card.*

*c. If total file size is larger than the SmartMedia™ Card storage size, not all the files will be transferred to the SmartMedia™ Card.*

#### 3.2 Browsing SmartMedia™ Card

- (1) Insert a SmartMedia™ Card into the card slot.
- (2) In main menu, select SMC. Press **ENTER** to browse.

*Note: You can only browse the content, not play directly from the SmartMedia™ Card.*

#### 3.3 Checking SmartMedia™ Card Storage

- (1) Insert a SmartMedia™ Card into the card slot.
- (2) In main menu, select SMC. Press **CDDB/INFO** to check SmartMedia™ Card info.

The screen will display the SmartMedia™ Card size, used size and remaining storage size.

### **3.4 Formatting SmartMedia™ Card**

- (1) Insert a SmartMedia™ Card into the card slot.
- (2) In main menu, select SMC. Press **DEL** to enter the format menu.
- (3) While “YES” is highlighted, press **ENTER** to confirm, or use the (▶) key to highlight “NO” and press **ENTER** to cancel.

*Note: Once the SmartMedia™ Card is formatted, all the information will be permanently removed.*

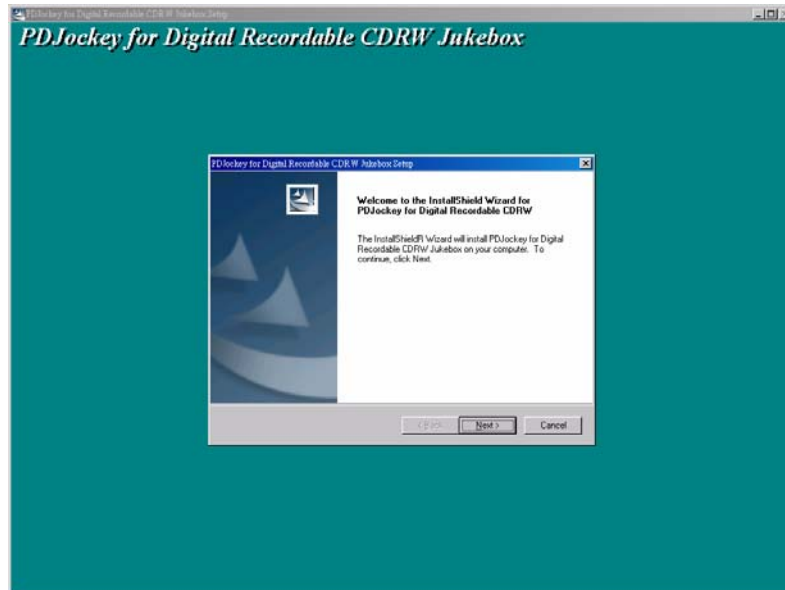
## 4. Jockey for CDRW Jukebox

### 4.1 About Jockey

Jockey is a software which is developed for CDRW Jukebox hard drive management. You can use this software to download MP3 files from your computer via the USB connection; edit and delete files; match untitled albums; and create new playlists in the hard drive.

### 4.2 Installing Jockey for CDRW Jukebox

- (1) Insert CD onto your PC. The CD will be automatically run.
- (2) Follow the instructions to finish the installation.



- (3) During installation, you will be asked to install Music Match bundle ripping software. You can install it if you want to have it or you can choose not to install if you don't need the ripping software or you already have a more updated version of it in your PC.
- (4) You are recommended to re-start your PC after installation is completed.



## 4.3 Setting Up Jockey for CDRW Jukebox

(1) System requirement:

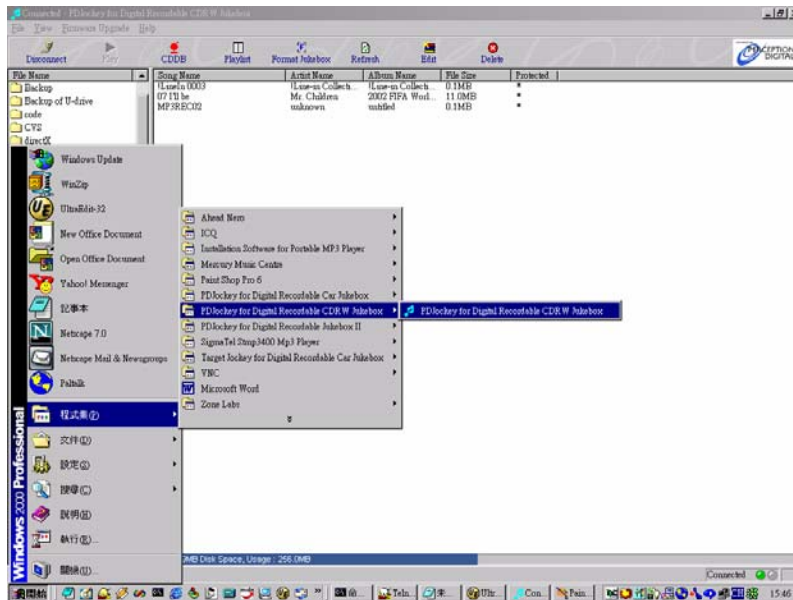
Before installing Jockey software, please make sure your computer satisfies the following requirements:

- Windows 98, 2000 or XP
- Pentium II 200
- 64MB RAM
- 500MB harddisk space

(2) Connect the Jukebox and your PC with a USB cable. The main unit LCD will display 'USB'. This means that the jukebox is ready in the USB download mode.

(3) In your Window, Go to Start | Program | Jockey for Digital Recordable CDRW Jukebox. Click on the icon to initiate the PDJockey. The program will automatically detect the connection to the Jukebox. If successful, the Jockey will display all the hard drive content in the Jukebox.

*Note: If connection fails, check the entire set up again for loose connection. Repeat the steps and make sure the driver and the program are properly installed.*



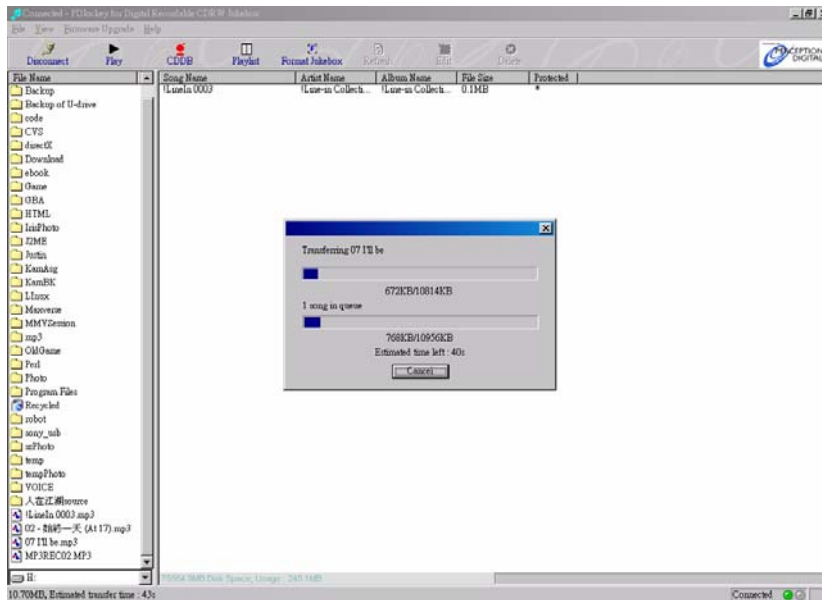
## 4.4 Using Jockey

This section explains to you the functions and features of Jockey.


### 4.4.1 Downloading MP3 Files from PC

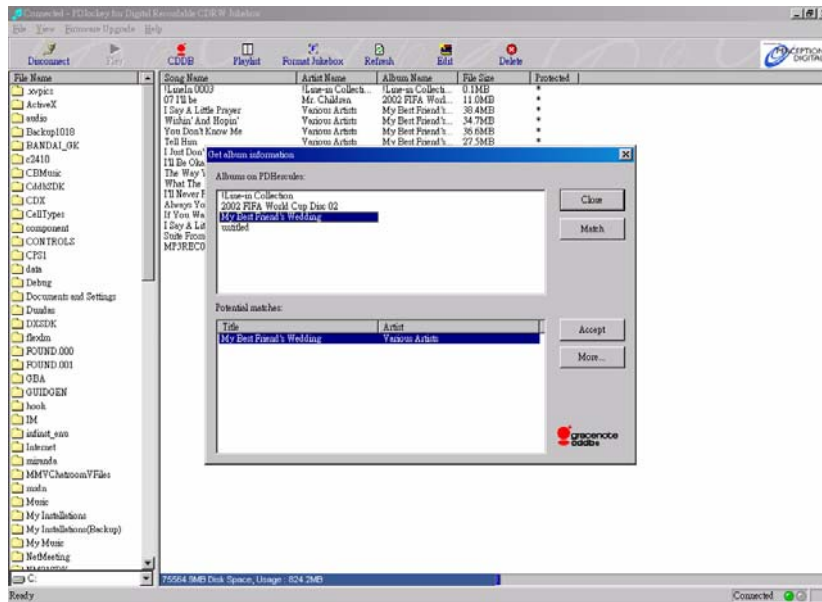
- (1) After initiated Jockey, you will see your PC files on the File Window (on the left) and the Jukebox Content Window located on the right.
- (2) Highlight the MP3 files you would like to transfer from the PC. You can select the entire folder, multiple files or a single file.
- (3) Just drag and drop the selection to the Jukebox Content Window. Files will be transferred automatically. To stop the transfer, click **CANCEL** on the transfer window.
- (4) For those files ripped by the bundled Music Match, you can find them at the bottom of the left inside the new created drive.

*Note: Only MP3 files can be downloaded.*




## 4.4.2 Matching Untitled Album via Gracenote CDDB®\* On-line Database


- (1) Click on the Gracenote **CDDB®**  icon on the tool bar.
- (2) If you have not already registered with Gracenote CDDB® on-line service, it will prompt for registration. Please follow the instructions to register.
- (3) Jockey will automatically detects any unmatched album in the jukebox and ask if you would like to match them automatically.
- (4) Click **YES** and Jockey will connect to Gracenote CDDB® Service via the internet and check the closest matches for the albums.
- (5) Click **NO** and you can match the albums manually.
- (6) On the Potential Matches Window, highlight the matched album title and click **MORE**. A Gracenote CDDB® Disc Information Window will pop up to show you the matched album tracks titles. Click **OK** when done.
- (7) Click **ACCEPT** to finish the matching process.



### 4.4.3 Creating Playlist Using Jockey


- (1) Click the **PLAYLIST**  icon on the tool bar. The Playlist Editor Window will pop up.
- (2) Click **CREATE PLAYLIST** to create a new playlist.
- (3) Enter your new playlist name.
- (4) Highlight the files you would like to include in the new playlist from the All Song in Jukebox Window (on the left).
- (5) Just drag and drop the files onto the Song in Playlist Window (on the lower right).
- (6) Click **Finish** when done.

### 4.4.4 Editing Playlist


- (1) Click the **PLAYLIST**  icon on the tool bar. The Playlist Editor Window will pop up.
- (2) On the Playlist Window (on the upper right), select the playlist you would like to edit.
- (3) Click on **RENAME PLAYLIST** button on the side to modify the playlist name.
- (4) To change the playlist content, highlight the songs in the Song in Playlist Window. You can choose to delete the song, move it up or down the playlist. Just click on the respective button on the side.

*Note: If you desire to change the song title within a playlist, please go back to the Jockey main page to edit the song title. The name within the playlist will be synchronized after refresh.*

### 4.4.5 Editing Files

- (1) In the Jockey main page, double-click on the file name you would like to edit. You can also highlight the file and click the **EDIT**  button on the tool bar. An Edit Song Info Window will pop up. You can modify the song name, artist or album name.
- (2) Click **OK** when finished.

### 4.4.6 Deleting Files

- (1) In the Jockey main page, highlight the files you would like to delete.
- (2) Click on the **DELETE**  button on the tool bar.
- (3) Click **OK** to confirm. Once the file is deleted, it cannot be recovered.

#### 4.4.7 File Playback

You can playback MP3 and WMA file on your PC by selecting the file on the left window and double click or press the **PLAY** button on the tool bar.

#### 4.4.8 Jukebox Firmware Upgrade

The jockey is equipped with the firmware upgrade function. This function enables you to enhance your jukebox or to obtain new features.

- (1) Click on Firmware Upgrade from the pull down menu; select software upgrade. Make sure your internet connection is on and the Jockey will automatically check new firmware version for you.
- (2) Click YES to download the upgrade patch.

#### 4.4.9 Jockey Upgrade

Visit our official website: [www.perceptiondigital.com](http://www.perceptiondigital.com). Go into the download section and select Jockey for CDRW Jukebox. Here you can always download the latest Jockey software. To check your current version number, you can click on the Help in the pull down menu.

#### 4.4.10 CDDB® Update

Since the device is already pre-installed with offline CDDB database. After you have been using it for sometime, you may find some latest or new released albums may not be able to be recognized by the internal offline CDDB. If this happens, you can update the database by performing an update in order to contain the latest or new albums information. You are recommended to update your jukebox in every 3 months.

CDDB database in your jukebox can be updated via our CDDB update assistant tool. You can choose to update it directly via the direct online update or to make a burned CD without connecting the jukebox with PC. Here below is the flow of performing the update:

##### **Direct Online Update**

- (1) Go to CDRW Jukebox download section from [www.perceptiondigital.com](http://www.perceptiondigital.com)
- (2) Download the CDDB Update Assistant tool and open file.
- (3) Choose **Direct Update**
- (4) Make sure your Jukebox is connecting to your PC and connecting the internet.
- (5) Click **UPDATE** button to start the update process
- (6) The update is done when it shows the CDDB in the Jukebox is updated.

### **CD Update**

You can choose to burn a CD with the updated CDDDB content if you have problem in connecting the jukebox to your PC.

- (1) In the CDDDB update assistant, choose **CD Update**.
- (2) You will be asked to enter the unique device ID.
- (3) To find the unique device ID, go to main menu of the jukebox, select System, then select Version. You can view the device ID in the version menu.
- (4) You can start the update process after entering the ID. Click **UPDATE** to start the update process. During the process, an update file will be created.
- (5) Then you can burn a CD with the update content.
- (6) Insert the burned CD which contains the update file to the jukebox and choose software upgrade.

## 5. Trouble Shooting

If you are having difficulties with your CDRW Jukebox, we recommend that you run through the following checklist or visit our website for more technical support before sending it for servicing. It could be that you simply overlooked a crucial step.

### **1. I cannot power on the CDRW Jukebox**

- + Make sure the CDRW Jukebox is connected to a power supply and the power switch at the back panel is turned on.
- + The USB cable should not be connected.
- + If the problem remains, please turn off the entire power supply, wait for a while and turn the unit back on again.

### **2. The AA battery inside the remote control drains even if I haven't used it for some time. What causes this?**

- + The remote control always uses some battery power. When it's turned off, it is in the power saving mode.

### **3. Why can't I play music from CD-ROM?**

- + Make sure your CD-ROM is properly inserted.
- + Make sure your CD-ROM is recorded properly.

### **4. Problems encountered while connecting to the PC for download.**

- + Make sure the PDJockey is properly installed and invoked on the PC.
- + Make sure the USB cable is connected and the Jukebox front panel display "PC Connected".

### **5. Why can't I play tracks from the SmartMedia Card?**

- + The CDRW Jukebox only supports downloading to SmartMedia Card, and not playing directly from it or uploading back to the Jukebox.

### **6. Why can't I download some songs to the SmartMedia Card?**

- + The only songs can be downloaded to the SmartMedia Card are the compressed songs.

### **7. I have inserted a blank CD-R or CD-RW in the CDRW Jukebox already, but why does the CDRW Jukebox keep telling me "Invalid Type of CD" and don't allow me to burn CD ?**

- + Only CD-R for Audio and CD-RW for Audio are supported in CDRW Jukebox, ordinary CD-R and CD-RW for use with CD rewriters in PC are identified and banned from burning any data onto them.

**8. I have started the burning process but I have changed my mind and would like to stop the burning process. How should I do that ?**

+ You may press "Stop" button at any moment during the burning process, a screen showing that the CDRW Jukebox is busy and you may press "Stop" button again to stop the burning problem. However, aborting a burning process may render a CD-R unusable or unreadable.

**9. As far as I know, I can burn a file, an album, a playlist or the last/top 20 lists to a CD. How may I select songs from different albums or lists and burn them onto a CD ?**

+ As playlist burning is supported, you can pick songs from any album or list by using the "Mark" button to create a playlist. You can then burn the selected songs in the playlist to a CD.

**10. I have picked some songs and burned on a CD successfully, however, I found that the filenames of the files on the CD is different from what's showing on the screen. What happened ?**

+ CDRW Jukebox uses the information in the ID3 tag of MP3 songs to create file names for files to be burned on a CD. In order to conform with ISO9660 filesystem with Joliet extension, some characters, such as the path separator "\", which are not allowed in file names, are changed to underscore, "\_", automatically.

**11. I have a CD with some songs in it already and would like to append 10 songs to it. After the burning process is concluded, I found that only 8 songs are appended to the CD. Where are the two songs?**

+ The disc may already contain the two songs. CDRW Jukebox checks the list of songs to be burned to the CD. If any song in the list is already found on the disc, the CDRW Jukebox won't append any song with same name to the disc. Therefore, in this case, only 8 songs are appended to the disc.

For more support, please visit: [www.perceptiondigital.com](http://www.perceptiondigital.com).



## 6. Appendix

**A1.** MPEG Layer 3 audio coding technology licensed from Fraunhofer IIS and THOMSON Multimedia. The PDHercules Digital Recordable Jukebox comes preinstalled with a CD database system. It can recognize the album titles, song names and artists. This system does not require the Jukebox to be online to work. The database includes the most popular CDs information in the past 10 years, and can be upgraded via CD Upgrade from time to time. Some CDs will not be supported although it is our commitment to expand the database.

**A2.**



This product contains technology and data from Gracenote of Berkeley, California ("Gracenote"). The technology from Gracenote (the "Gracenote Embedded Software") enables this product to do disc identification and obtain music-related information, including name, artist, track, and title information ("Gracenote Data"), which is included on the Gracenote Database (the "Gracenote Database").

You agree that you will use Gracenote Data, the Gracenote Database, and Embedded Software for your own personal non-commercial use only. You agree that you will access Gracenote Data only by means of the standard end user functions and features of this product. You agree not to assign, copy, transfer or transmit the Embedded Software or any Gracenote Data to any third party. YOU AGREE NOT TO USE OR EXPLOIT GRACENOTE DATA, THE GRACENOTE DATABASE, OR GRACENOTE COMPONENT, EXCEPT AS EXPRESSLY PERMITTED HEREIN.

You agree that your non-exclusive license to use the Gracenote Data, the Gracenote Database, and Embedded Software will terminate if you violate these restrictions. If your license terminates, you agree to cease any and all use of the Gracenote Data, the Gracenote Database, and Gracenote Embedded Software. Gracenote reserves all rights in the Gracenote Data, Gracenote Database, and Gracenote Embedded Software, including all ownership rights. You agree that Gracenote may enforce its rights under this Agreement against you directly in its own name.

The Embedded Software and each item of Gracenote Data are licensed to you "AS IS." Gracenote makes no representations or warranties, express or implied, regarding the accuracy of any Gracenote Data. Gracenote reserves the right to delete data or to change data categories in any Data updates and for any cause that Gracenote deems sufficient. No warranty is made that the Embedded Software is error-free or that functioning of the Embedded Software will be uninterrupted. Gracenote is not obligated to provide you with any new enhanced or additional data types or categories that Gracenote may choose to provide in the future.

GRACENOTE DISCLAIMS ALL WARRANTIES EXPRESS OR IMPLIED, INCLUDING, BUT NOT LIMITED TO, IMPLIED WARRANTIES OF MERCHANTABILITY, FITNESS FOR A PARTICULAR PURPOSE, TITLE, AND NON-INFRINGEMENT. GRACENOTE DOES NOT WARRANT THE RESULTS THAT WILL BE OBTAINED BY YOUR USE OF THE GRACENOTE COMPONENT OR ANY GRACENOTE SERVER. IN NO CASE WILL GRACENOTE BE LIABLE FOR ANY CONSEQUENTIAL OR INCIDENTAL DAMAGES OR FOR ANY LOST PROFITS OR LOST REVENUES.

Gracenote is CDDb, Inc. d/b/a "Gracenote." CD and music-related data from Gracenote CDDb(r) Music Recognition Service (c) 2000, 2001, 2002 Gracenote. Gracenote CDDb Client Software (c) 2000, 2001, 2002

Gracenote. U.S. Patents Numbers #5,987,525; #6,061,680; #6,154,773, an other patents issued or pending.

CDDb is a registered trademark of Gracenote. The Gracenote logo and logotype, the Gracenote CDDb logo and logotype, and the "Powered by Gracenote CDDb" logo are trademarks of Gracenote. Music Recognition

Service and MRS are service marks of Gracenote.

## 7. Company Contacts

**For United States:**

Toll Free Service Hotline: 1-866-66-12340

For Technical Enquiry: [ustechnical@perceptiondigital.com](mailto:ustechnical@perceptiondigital.com)

**For Hong Kong:**

2104A World Wide House

19 Des Voeux Road Central, Hong Kong

General Enquiry Hotline: (852) 2269 1234

**Website:**

[www.perceptiondigital.com](http://www.perceptiondigital.com)

**Other Contacts:**

For General Information: [info@perceptiondigital.com](mailto:info@perceptiondigital.com)

For Sales Related: [sales@perceptiondigital.com](mailto:sales@perceptiondigital.com)

## Free Manuals Download Website

<http://myh66.com>

<http://usermanuals.us>

<http://www.somanuals.com>

<http://www.4manuals.cc>

<http://www.manual-lib.com>

<http://www.404manual.com>

<http://www.luxmanual.com>

<http://aubethermostatmanual.com>

Golf course search by state

<http://golfingnear.com>

Email search by domain

<http://emailbydomain.com>

Auto manuals search

<http://auto.somanuals.com>

TV manuals search

<http://tv.somanuals.com>