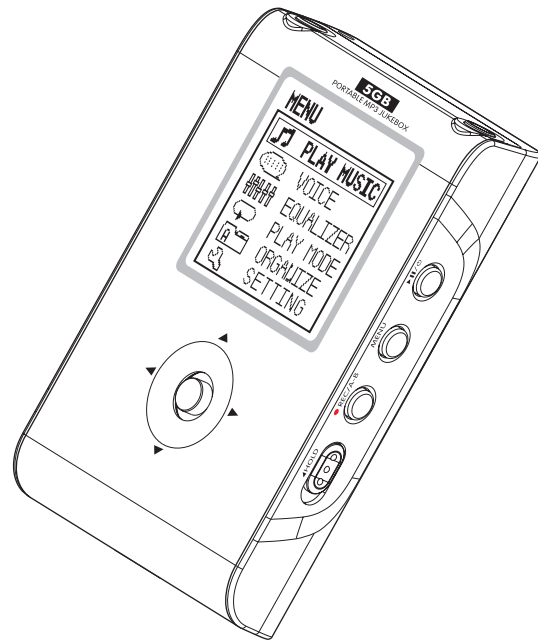


USER MANUAL

Portable Jukebox
PD-1001



Perception
Digital



Copyright ©2004 Perception Digital Limited. All rights reserved



0904

IMPORTANT NOTICE

Please install the Jockey program (pre-loaded or downloaded to the machine) to the PC before using the machine. For creating playlist, drag and drop the songs to the player must be gone through this Jockey program from PC.

Table of Contents

1

| | |
|--|----|
| Introduction..... | 6 |
| PD-1001 Portable Jukebox - Overview..... | 7 |
| Accessories..... | 8 |
| PD-1001 - Specifications..... | 9 |
| Description Of Buttons and Keys..... | 10 |
| Power Supply..... | 12 |
| Recharging by AC Adapter..... | 12 |
| Recharging by USB Cable..... | 13 |
| Connecting PD-1001 with your Computer..... | 14 |
| Installing Software..... | 14 |
| System Requirements..... | 14 |
| Transferring Files from your PC..... | 15 |
| How to Format the Jukebox | 19 |
| Getting Started – Turning On your PD-1001..... | 20 |
| Browsing..... | 21 |
| The Main Menu..... | 21 |
| Play Music..... | 22 |
| Browsing by Index (Artist, Album, Genre, Track)..... | 23 |
| Display Layout..... | 23 |
| Search by Artist..... | 23 |
| Selecting a Song..... | 24 |
| Browsing by Year and Playlist..... | 24 |
| Voice Menu..... | 24 |
| Play Screen Display..... | 25 |
| Recording..... | 26 |

| | |
|-----------------------------------|----|
| Record Menu..... | 26 |
| Start and Stop Recording..... | 26 |
| Record Settings..... | 26 |
| Location Of Recorded Files..... | 27 |
| Advanced Features..... | 28 |
| Equalizer..... | 28 |
| Play Mode..... | 28 |
| Organize..... | 29 |
| Delete File..... | 31 |
| Lyric Display..... | 32 |
| Settings..... | 33 |
| Appendix A - Troubleshooting..... | 35 |

FCC NOTICE

THIS EQUIPMENT HAS BEEN TESTED AND FOUND TO COMPLY WITH THE LIMITS FOR A CLASS B DIGITAL DEVICE, PURSUANT TO PART 15 OF THE FCC RULES, THESE LIMITS ARE DESIGNED TO PROVIDE REASONABLE PROTECTION AGAINST HARMFUL INTERFERENCE IN A RESIDENTIAL INSTALLATION. THIS EQUIPMENT GENERATES, USES, AND CAN RADIATE RADIO FREQUENCY, AND, IF NOT INSTALLED AND USED IN ACCORDANCE WITH THE INSTRUCTIONS, MAY CAUSE HARMFUL INTERFERENCE TO RADIO COMMUNICATIONS. HOWEVER, THERE IS NO GUARANTEE INTERFERENCE WILL NOT OCCUR IN A PARTICULAR INSTALLATION. IF THIS EQUIPMENT CAUSES HARMFUL INTERFERENCE TO RADIO OR TELEVISION RECEPTION, WHICH CAN BE DETERMINED BY TURNING THE EQUIPMENT OFF AND ON, THE USER IS ENCOURAGED TO TRY TO CORRECT THE INTERFERENCE BY ONE OR MORE OF THE FOLLOWING MEASURES:

- REORIENT OR RELOCATE THE RECEIVING ANTENNA.
- INCREASE THE SEPARATION BETWEEN THE EQUIPMENT AND RECEIVER.
- CONNECT THE EQUIPMENT INTO AN OUTLET ON A CIRCUIT DIFFERENT FROM THAT TO WHICH THE RECEIVER IS CONNECTED.
- CONSULT THE DEALER OR AN EXPERIENCED RADIO/TV TECHNICIAN FOR HELP.



IF THE JUKEBOX SUDDENLY FROZE OR HAS NO RESPONSE, IT MAY BE CAUSED BY ELECTROSTATIC PHENOMENON. IN THIS CIRCUMSTANCE, PLEASE FOLLOW THE PROCEDURES BELOW FOR RECOVERY:

1. RESET THE UNIT.
2. TURN ON THE UNIT AGAIN.

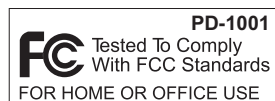
FCC RULES & WARNING:

THIS DEVICE COMPLIES WITH PART 15 OF THE FCC RULES.

OPERATION IS SUBJECT TO THE FOLLOWING TWO

CONDITIONS:

1. THIS DEVICE MAY NOT CAUSE HARMFUL INTERFERENCE; AND
2. THIS DEVICE MUST ACCEPT ANY INTERFERENCE RECEIVED INCLUDING INTERFERENCE THAT MAY CAUSE UNDESIRE OPERATION.



CHANGES OR MODIFICATIONS NOT EXPRESSLY APPROVED BY THE PARTY RESPONSIBLE FOR COMPLIANCE COULD VOID THE USER'S TO OPERATE THE EQUIPMENT.

CAUTION: USE OF ANY CONTROLS, OR PROCEDURES OTHER THAN THOSE SPECIFIED HEREIN MAY RESULT IN HAZARDOUS RADIATION EXPOSURE.

CAUTION: THESE SERVICING INSTRUCTIONS ARE FOR USE BY QUALIFIED SERVICE PERSONNEL ONLY. TO REDUCE THE RISK OF ELECTRIC SHOCK, DO NOT PERFORM ANY SERVICING OTHER THAN CONTAINED IN THE OPERATIONS UNLESS YOU ARE QUALIFIED TO DO SO.

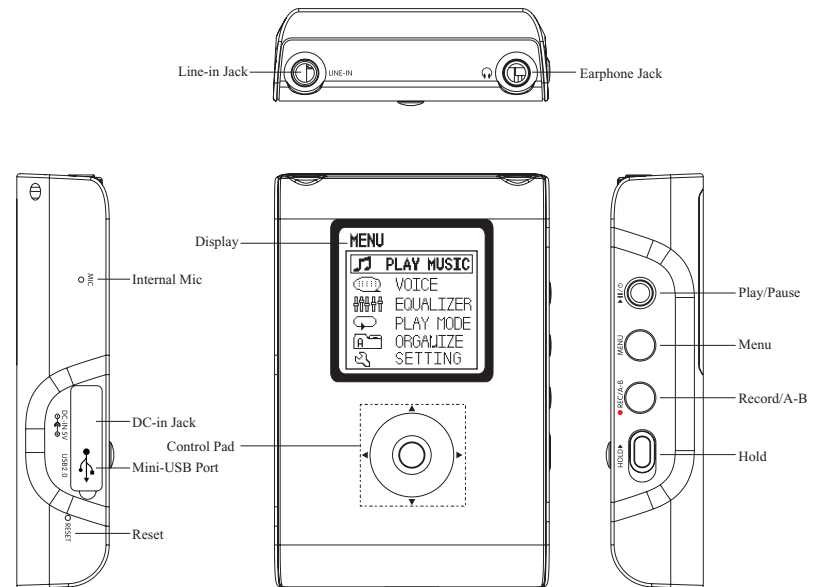
General Care

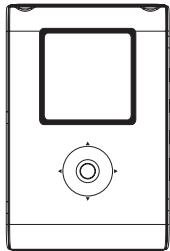
- Do not allow the device, battery or accessories to come into contact with liquids or moisture at any time.
- Do not immerse in any liquid.
- Do not drop, throw, or subject the device to rough treatment.
- Do not leave the device or the battery in places where the temperature could exceed 60°C, e.g. on a car dashboard or a window sill, behind glass in direct sunlight, etc.
- Do not attempt to dismantle the device or any of its accessories.
- This equipment is fitted with an internal battery that can only be replaced by a qualified service engineer. There is a risk of explosion if the battery is replaced with an incorrect battery type. Dispose of the used battery in accordance with the manufacturer's instructions.
- Do not put a battery into a microwave oven, dryer, or high-pressure container.
- Remember to make backup copies of all important data on your device .

- Remove your PD-1001 from packaging **and charge the unit fully.**
- Connect the USB cable between the base of your PD-1001 and the USB port of your PC.
- On your PC, click on Start, My Music and then Show Folders.
- On the LH side of your PC screen, open My Computer. PD-1001 will register as a new drive.
- You can now select music to be transferred. Files can be dragged and dropped to the PD-1001 drive.
- Once completed, safely remove hardware (click on hardware icon on Bottom RH screen) and detach the USB cable.
- If the message "Locked" appears on the PD-1001 display, **move** the Hold button **to the** unlocked position.

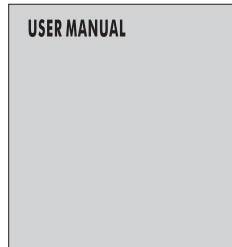
The PD-1001 lets you enjoy digital music, encode music from audio sources and perform sound recording. You can also transfer favorite songs from your computer to the PD-1001.

LCD Display





Portable Jukebox



User Manual



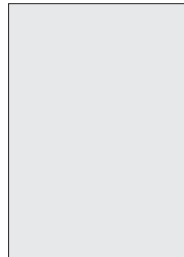
Stereo Earphone



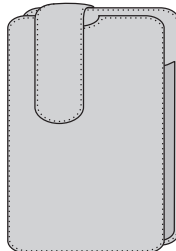
USB 2.0 Cable



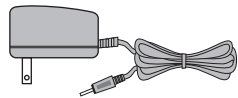
Mini Line-in Cable



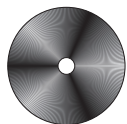
Warranty Card (Optional)



Carry Case (Optional)



AC Adapter (Optional)



Driver CD for Win 98 SE (Optional)

| | |
|-----------------------------------|--|
| Size (H x W x D) in mm: | 79.2 x 52.5 x 17.7 |
| Net Weight: | 85g |
| Internal Hard Disk: | 5 Gigabyte hard drive |
| LCD Size: | 25.8x25.8mm (128x128 pixels) |
| Power Supply: | 5V 2A |
| Battery: | Internal Lithium-ion rechargeable battery 3.7V, 900mAh |
| Battery Life: | >10 Hours |
| Battery Recharging : | USB recharging by connecting the Jukebox with the computer or DC charging |
| PC Interface: | USB 2.0 (USB 1.1 Backward compatible) |
| Digital Music Format Playback: | MP3, WMA, all bit rates including VBR |
| Digital Voice Format Playback: | ADPCM (32kbps) |
| Record: | Voice recording from line-in or internal MIC |
| Built-in Microphone: | Electric condenser microphone |
| Signal to Noise Ratio: | >90dB |
| Frequency Range: | 20Hz – 20kHz |
| Equalizer: | Flat, Club, Arena, Monitor, Studio, User |
| Play Modes: | Normal, Single, Repeat Single, Repeat Folder, Repeat All, Shuffle Folder, Shuffle All, Shuffle Repeat Folder, Shuffle Repeat All |

* 1Gigabyte = 1×10^9 Bytes, about 100MB has been reserved for system information.

Button Description:

| <i>Name</i> | <i>Icon</i> | <i>Descriptions/Functions</i> |
|----------------------|-------------|---|
| Power/Play/ Pause | | <ul style="list-style-type: none"> - To turn on the Jukebox. - To start playing when the Jukebox is in browse mode, and to pause/resume playing in playback mode. - To return to the play menu when browsing during music playing. - To pause the recording track by pressing the button once in the recording mode. |
| Record | | <ul style="list-style-type: none"> - To record from the internal microphone or line-in. - To start recording by pressing the button one time to confirm the record setting and one more time to start recording. - Recording will start immediately by holding this button. - To start recording another track by pressing the button during recording. |
| Menu | | <ul style="list-style-type: none"> - To return to the Main Menu during browsing. - To stop playing or recording by holding the button. |
| | | <ul style="list-style-type: none"> - To access the next menu level. - To play a song if the song has been selected. |

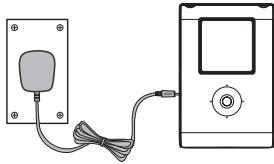
| | | |
|-------|--|--|
| | | <ul style="list-style-type: none"> - By pressing the button, you can access the Equalizer Menu to select different play effects during playing. - By holding the button instead, you can access the Mode Menu to select different play modes during playing. |
| Right | | <ul style="list-style-type: none"> - To access the next menu level during the browsing mode. - To select next track during playback mode. - To perform the fast-forwarding function by holding the button. |
| Left | | <ul style="list-style-type: none"> - To return to the previous menu level during the browsing mode. - To select previous track during the playback mode. - To perform the rewinding function by holding the button. |
| Up | | <ul style="list-style-type: none"> - To move up by one item during the browsing mode. - To adjust (increase) the volume during the playback mode. |
| Down | | <ul style="list-style-type: none"> - To move down by one item during the browsing mode. - To adjust (decrease) the volume during the playback mode. |

PD-1001 Portable Jukebox contains an internal rechargeable lithium-ion battery. A fully charged battery supports 10 hours continuous playing.

The lithium-ion battery will be drained slowly. If you have not used your Portable Jukebox for a long time, please remember to recharge the battery before playing.

Recharging by AC Adapter

You can recharge your Jukebox by connecting the included AC adapter to the DC IN port at the bottom of the Jukebox. The AC adapter recharges the battery from 0% to 70% ~ 80% capacities within 1.5 hours.



** Notes:

For the first time recharging by the AC adapter, the battery should be charged for at least 10 hours. The lithium-ion battery will be recharged anytime whenever the AC adapter is plugged into the PD-1001.

The battery must be charged in the room temperature between 0°C and 45°C. Ensure that your jukebox is switched off. If the jukebox temperature is high, wait until it returns to a normal temperature.

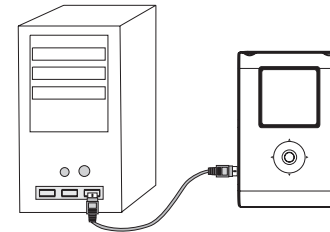
Stop charging the battery if charging is not completed within five hours.

The recharging process will stop when the battery is fully charged. The lithium ion battery does not overcharge.

Recharging by USB Cable

Another way to recharge the Jukebox is to connect the USB port at the bottom of the Jukebox with the USB port of a computer using the USB cable. The recharging process starts automatically.

The USB cable recharges the battery from 0% to 70% ~ 80% capacities within 6 hours. Note: the PD-1001 should be powered off before connecting to the computer for recharging.



Installing the Software System Requirements

The minimum system requirements of your computer must be:

- *Window98SE, 2000, XP or above*
- *Pentium II 200*
- *64MB RAM*
- *500MB memory space*
- *CD-ROM drive*
- *USB 1.1 port or above*

For Window 98 SE user, please download the driver from the download section of the website below:

www.perceptiondigital.com

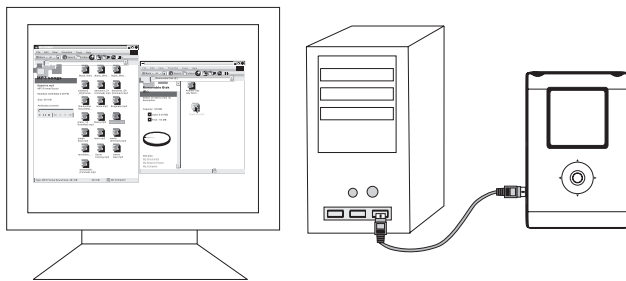
Or you can use the bundled CD (optional) in the package to install Window 98 SE driver. If you use the driver CD, place it in your CD-ROM and installation will start automatically. If you download the driver from the website, double click setup.exe file to start installation. Follow the on-screen prompts to complete the driver installation process.

Transferring Files From Your PC

- Install the Play List Editor, bundled with the CD driver.
- Power on the PD-1001 by holding the Play button until “USB Connected” is shown on the unit’s screen.
- Click on “Start” → “All programs” → “Jockey” → “Jockey”.
- Transfer MP3 files from the computer to the PD-1001 simply by dragging and dropping the files from your computer folder to the “right hand side”.



- "Save" to download the final Music Library to the player.
- Exit the program.
- Press yes to upgrade device's Music library.
- Complete the process by clicking on the "Safely Remove Hardware" icon in the notification area of the bottom left Windows taskbar and then click on "Safely remove Portable Jukebox".
- Unplug the USB cable.

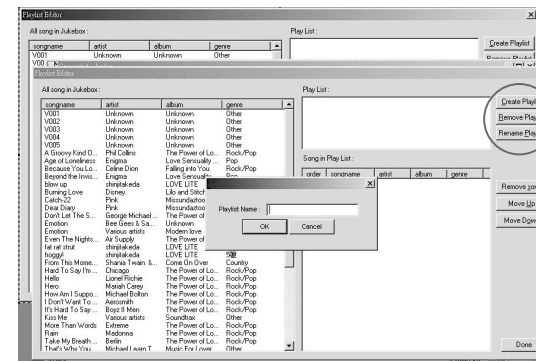


Playlist creation

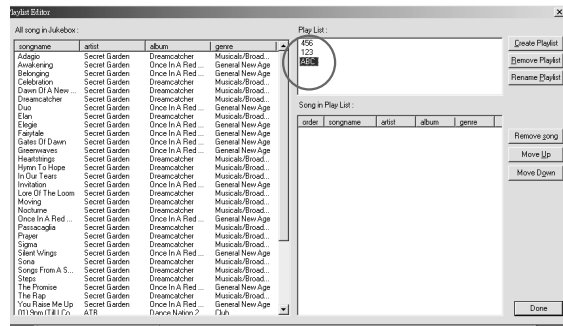
You can use our Play List Editor to create the Jukebox Playlist.



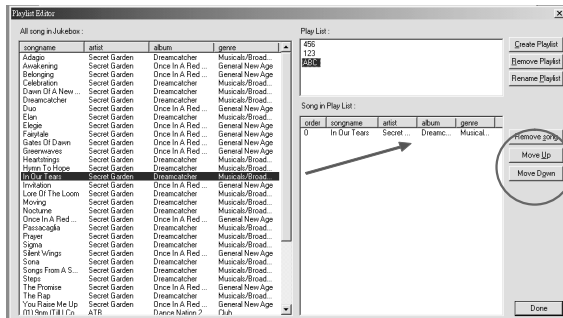
1. Create Playlist name



2. Choose the created Play list (e.g. ABC)



3. Drag & drop the selected song to the playlist.
4. Control the playlist by using Remove songs / Move Up/ Move Down icon.
5. Press DONE to finish.

**** Note:**

Do not disconnect the PD-1001 without the “Safely Remove” being confirmed by your computer.

How to Format the Jukebox?

The purpose of reformatting the Jukebox is to remove all content from the Jukebox using the computer.

- Connect the PD-1001 to the computer.
- From the Windows Explorer you should find an icon representing the additional drive (the PD-1001). Right click on that drive and click Format.
- Click “Yes” to confirm and proceed.

When should I use "Sync" Button?

Some Song files may be downloaded to the player via Window Explorer. This newly added songs are not shown in the database. In this case, please use the “sync” button to synchronize the Music Library with the content in the Harddisk.

remarks:

- The format structure should be FAT 32, others format not support.

Hold the Copy button to turn on the Jukebox. Once it turns on, you will see the word “initializing...” on the backlight display.

The Portable Jukebox is now ready for you to use, after you see the Main Menu.

The Main Menu

A total of 7 sub-menus:

1. **Play Music**(*Music Library Browsing*) – From which you can browse the Music Library.

Music Library helps categorizes your music under Artist, Album, Genre, Year and Track.



2. **Voice**– All files recorded in voice format are stored under this sub-menu.
3. **Text**– To view the text file as if a E-book.
4. **Equalizer**– Select different sound effects.
5. **Play Mode** – Select different play modes.
6. **Organize**– Create and manage your portable Jukebox database.
7. **Settings** – Adjust Jukebox Setting.

Play Music

The Music Library manages all songs stored in the database. Technically, based on the ID3 tag of MP3, songs can be categorized and accessed by Artist, Album, Genre, Year, Track and Playlist. If the ID3 tag of a song is missing, then this particular song will be categorized under “Unknown” in both Artist and Album.

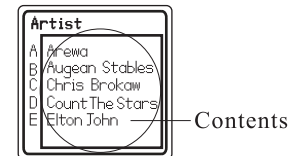


Browsing by Index (Artist, Album, Genre, Track)

Browsing songs by the categories – Artist, Album, Genre or Track share the same display layout. Please refer to the following example in which Elton John is being located.

Display Layout

To ease searching, artists are sorted in alphabetical order from A to Z. The display layout can be viewed as two parts, the index row on the left-hand side and the list of artists on the right-hand side.



Search by Artist

You can use the Up and Down keys to select the starting character of the artist from the Index, which is “E” in this example. The contents will keep updating while the index is changing.

Once you find “Elton John” in the Contents, press either the Right key or the OK button to switch to the Contents. The next step is to highlight “Elton John” by using the Up and Down keys to scroll up or down the artist list.

Selecting A Song

After “Elton John” has been highlighted, press either the Right key or the OK button to access the menu in which all songs performed by Elton John are shown. You can then press the Play button to start playing, or select a particular song by using the Up and Down keys again.

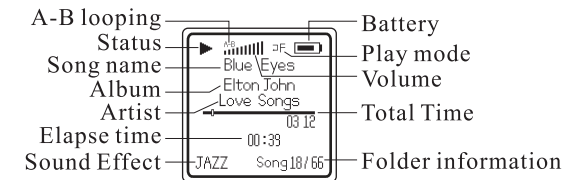
Browsing by Year and Playlist

Browsing songs by other categories – Year and Playlist share the same display layout. The steps involved are similar to those when looking for an artist. However, since the Index is not involved in this process, you simply scroll through the list and select directly from it.

Voice Menu

All files recorded in voice format are located in the voice menu. You can use the Up and Down keys to select your desired voice file and press play button to start playing.

The information shown in the figure below will be displayed in the screen when the Portable Jukebox is playing music (the playing mode).



Play Adjustment

- Use the Up and Down keys to adjust the volume.
- Press the Play button to pause and resume playing.
- Press the Right key for next track.
- Hold the Right key for fast-forwarding.
- Press the Left key for previous track.
- Hold the Left key for rewinding.
- Press the OK button to jump to the Equalizer Menu
- Hold the OK button to jump to playing mode
- Use the Record button to set and clear A-B loop.

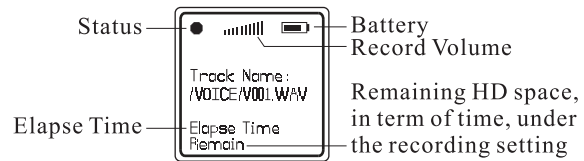
Record Menu

The Record Menu can be accessed by pressing the Record button from the Main Menu when the PD-1001 is not playing.

Go to “Rec Setting” inside “Settings” to control source, format and bit rate before recording.

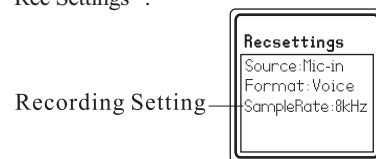
Start and Stop Recording

Press the Record button once to start recording. Press or hold the Menu button to end your recording task. Press Play to Pause, press Record to split file and press Menu to stop recording.



Record Settings

Before recording, you are advised to adjust the settings for the recording task. First you have to access the Settings Sub-menu from the Main Menu, then select “Rec Settings”.



Location of Recorded Files

You can locate the recorded files (either recorded by the built-in microphone or the line-in cable) in the folders listed below:

| | |
|---------------|--------------|
| Voice Mic-in | Voice folder |
| Voice Line-in | Voice folder |

All recorded songs can be found in the Music Library.

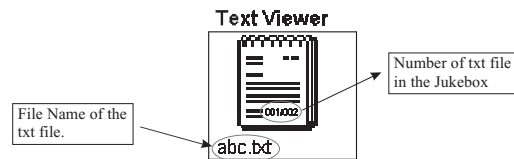
TEXT Viewer

This function enable user to read .txt file from the Juke box.



Steps:

1. You can simply drag and drop the XXX.txt file into the portable Jukebox under "TEXT" folder.
2. Disconnect the player from PC.
3. Open the Jukebox and choose "TEXT" by ▲▼ touch panel on the right hand side of the LCD display.
4. Enter by pressing "OK" or ►►.



5. Use ►►/ ◀◀ to search for the content that you want to look for.
6. You can find the .txt file name in the left bottom corner.
7. Confirm your choice by pressing OK.
8. Return to one level up by pressing MENU once / MENU twice back to main menu.

Equalizer

Five sound effects are available in this sub-menu: Flat, Club, Arena, Monitor and Studio. Each of these sound effects has its own preset control equalizer band. You can use the Up and Down keys to scroll and select any of these sound effects and press the OK button to confirm your selection.

You can also select Custom from the sub-menu to adjust each of the control equalizers yourself. Press the Up and Down keys to adjust each equalizer band.

Play Mode

Play mode refers to the way that how the selected songs are playing. The usual sequence of play is from the first song to the last.

Play mode consists of a combination of Normal, Single, Repeat and Shuffle logics. There are totally nine combinations in the PD-1001:

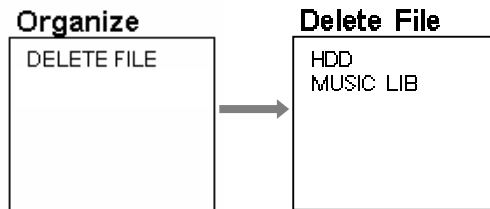
- Normal – Play continuously from a particular song to the last song in the database.
- Single – Play selected song and then stop.
- Repeat Single – Play selected song, then repeat.
- Repeat Folder – Play all the songs in the folder, then repeat.
- Repeat All – Play all the songs in the Music Library and then repeat.

- Shuffle Folder – Play all the songs in a category in random sequence then stop.
- Shuffle All – Play all the songs in the Music Library in random sequence, then stop.
- Shuffle Repeat Folder – Play all the songs in a category in random sequence, then repeat.
- Shuffle Repeat All – Play all the songs in the database in random sequence, then repeat.

Note: “Folder” means “category” including Artist, Album, Genre, Year and Playlist in the PD-1001.

Organize

This function enable user to organize their Jukebox content without connecting with the PC. You can delete the file content in the Jukebox.



Delete File

You can choose to delete the content in the Jukebox HDD, and also the Music Library content.

You can browse the content as if the Windows explore. It is an easy way to manage your HDD content.

HDD Content

- VOICE/
- LINE-IN/
- TEXT/
- ABC.MP3

- Note: 1. Deleting content under Music Lib will remove that file from Music Lib.
2. File Delete via HDD or Music Lib will physically delete the file from PD-1001 internal Harddrive.

Lyric Display

This function enable user to read the lyric during playback music.
PD-1001 support .Lrc file and Lyric 3 standard.

Note:

Lyric creation

By .Lrc file

1. You need to create the XXX file name with the same file name of .mp3. e.g. ABC.lrc & ABC.mp3
2. You must put the pairs of music & lyric into the same folder.

By Lyric 3

Lyric will be displayed with correct .Lrc format or Lyric 3 standard.

Settings

This sub-menu is the utility store of the Jukebox. Here you can manipulate the power off timing, the duration of backlight, contrast of the display as well as the settings for the recording function.

| <i>Utility</i> | <i>Options</i> | <i>Steps</i> | <i>Descriptions</i> |
|----------------|--|--|--|
| Power | DISABLE 1 min 2 min 5 min 10 min | - Select an option by using Up and Down; confirm your selection by pressing the OK button. - Press the MENU button to quit. | - The Jukebox will be powered off after your selected option. - If "DISABLE" is selected, then the Jukebox will not be powered off automatically. |
| Backlit | DISABLE 10 sec 30 sec 60 sec ALWAYS ON | Ditto | - The backlight will be turned off after your selected option. - If "DISABLE" is selected, then the backlight will not be turned on. - The "ALWAYS ON" option means that the backlight is turn on as long as the Jukebox is working. |

| | | | |
|----------------|---|--|---|
| Contrast | N/A | - Adjust the display contrast by using Up and Down. - Press the MENU button to quit. | |
| Record Setting | <i>Source:</i> Line-In/Mic-In <i>Format:</i> Voice/MP3 <i>Sample Rate:</i> 8kbps (Voice mode) | - Select an item by using Up and Down; then for each item, select an option by using Left and Right. Confirm your selection by pressing the OK button. - Press the MENU button to quit. | - The combination of all four items allows you to record music or voice by the built-in microphone or through the provided line-in cable. |
| Version | | - Version number | |

FAQ

I cannot find the latest music or songs that saved in the PD-1001.

Remember to sync the database whenever the contents of harddisk have been modified.

The A-B looping function does not work.

The A-B looping function only works when the Jukebox is playing, that is in the playback mode. You can use the Record button to set or clear this function.

How can I locate the Line-in recording in my PD-1001?

a. For voice line-in recording, locate the “Voice” folder from the Main Menu.

The Jukebox cannot record via Line-in.

a. Check if there is still sufficient space in the memory.

b. Check if the settings and connection for Line-in recording are set properly.

I cannot connect the Jukebox with my computer.

Please check your OS version of your PC, if it is Window 98 SE, you need to install a driver. Window 98 is not supported.

The transfer rate from my computer to my Jukebox is very slow, it seems it is not an USB 2.0.

Hi-speed USB 2.0 transfer requires PC support, please check if your PC supports USB2.0.

The Backlight does not turn on.

Check if the backlight function has been disabled in the system setting. Backlight disabling is designed for the power saving purpose.

How can I create a song with Lyric support?

There are some freeware on the web that assist you to do this search keywords such as ".Lrc" or "Lyric 3 editor", etc for details.

Free Manuals Download Website

<http://myh66.com>

<http://usermanuals.us>

<http://www.somanuals.com>

<http://www.4manuals.cc>

<http://www.manual-lib.com>

<http://www.404manual.com>

<http://www.luxmanual.com>

<http://aubethermostatmanual.com>

Golf course search by state

<http://golfingnear.com>

Email search by domain

<http://emailbydomain.com>

Auto manuals search

<http://auto.somanuals.com>

TV manuals search

<http://tv.somanuals.com>