



**Portable MP3 Player and Voice Recorder
PD-098-02**

UserManual

Copyright© 2003 Perception Digital Limited. All rights reserved.



0103

Table of Content

Introduction.....	3
Copyright notice.....	4
Safety information.....	4
Precautions.....	5
In the Package.....	6
Specifications.....	7
Knowing Your PD-098-02	8
Name of parts.....	8
Inserting battery.....	9
Turning on the player.....	9
Turning off the player.....	9
Installing the Device.....	10
Installing the USB device.....	10
Transferring files.....	13
Firmware Upgrader.....	14
Minimum system requirement.....	14
Operating Controls.....	15
Operating in music mode.....	15
Operating in voice mode.....	16
Detailed Controls.....	17
Switching modes.....	17
Playing music or voice files.....	17
Recording.....	17

Table of content

Menu Settings	19
Menu settings in music mode.....	19
Menu settings in voice mode.....	20
System settings.....	21
 Troubleshooting	 23
 Company Contacts	 24

Introduction

Thank you for purchasing our product!

PD-098-02 is an MP3 player and voice recorder which enables you to directly line-in record your music to the player; WITHOUT using computer, you can enjoy digital music in a more convenient way.

Its one-touch voice recording feature can be used to record lectures, interviews or meetings in voice quality.

With its tiny and fashionable design, PD-098-02 possesses varieties of features. To let you know more about PD-098-02, here are the functions in highlights:

- Direct line-in recording
- 128MB internal memory
- Pitch conversion
- MP3, WMA, ADPCM playback
- Voice recording from built-in microphone
- Fancy flashlight
- Support ID3 tag
- Act as an external drive, support file storage and transfer
- Mini-USB connection with PC
- No PC software required
- Firmware upgrades

Other functions:

- A-B looping support
- 5 equalizers
- Sleep preset

Introduction

Copyright notice

You must be aware that distribution of MP3 files without permission from the content owner is against the copyright laws. Perception Digital Ltd. and its associating companies will not be liable against such actions.

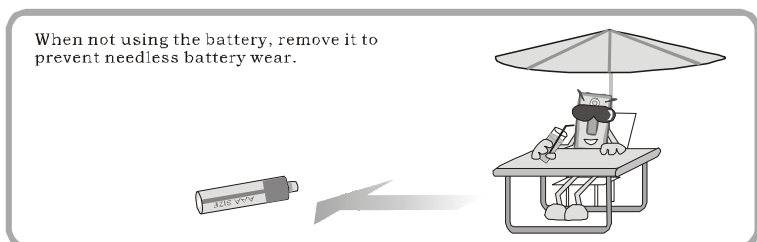
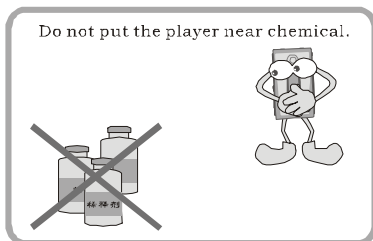
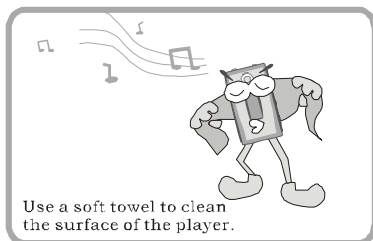
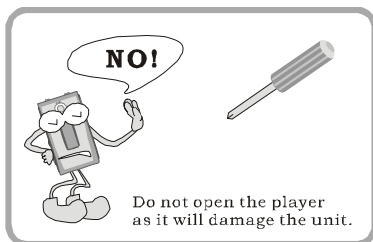
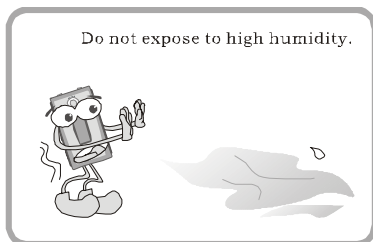
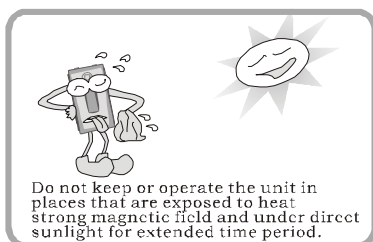
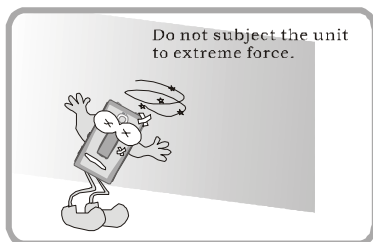
Safety information

This equipment has been tested and found to comply with limits for class B digital device, pursuant to part 15 of the FCC rules. These limits are designed to provide reasonable protection against harmful interference in a residential installation. This equipment generates, uses and can radiate radio frequency energy and, if not installed and used in accordance with the instruction, may cause harmful interference to radio communications. However, there are no guarantee that interference will not occur in a particular installation. If this equipment does cause harmful interference to radio or television reception, which can be determined by turning the equipment off and on, the user is encouraged to try to correct the interference by one or more of the following measures:

- Reorient or relocate the receiving antenna
- Increase the separation between the equipment and receiver
- Connect the equipment into an outlet on a circuit different from that to which the receiver is connected
- Consult the dealer or an experienced radio/ TV technician for help
Modifications not authorized by the manufacturer may void users authority to operate this device.
- During file transfer or in the PC connected mode, if the player or computer is suddenly froze or no response, it may be due to the electrostatic phenomenon, please follow the procedures below to recover the operation:
 - unplug the USB cable from the player
 - close the software application in the computer (or reboot the computer if necessary)
 - reconnect the USB cable to the player

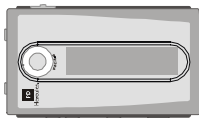
Introduction

Precautions



In the Package

1. Main Unit
2. Stereo Earphone
3. Mini-USB Cable
4. CD for Driver Installation
5. User Manual
6. Warranty Card (Optional)



Main Unit



Stereo Earphone



Mini-USB Cable



CD for Driver Installation



User Manual



Warranty Card

Specifications

Size (HxWxD)	73 x 42 x 16mm (2.87"x1.65"x0.63")
Net Weight	39g (without battery)
Internal Flash Memory	128MB (depending on product version)
Power Supply	1x AAA alkaline battery
PC Interface	Mini-USB
Digital Music Format Playback	MP3, WMA, all bit rate including VBR
Digital Voice Format Playback	ADPCM
Record	ADPCM from internal mic. or line-in
Built-in Microphone	Electric condenser microphone
Signal to Noise Ratio	>90dB
Frequency Range	20Hz - 20kHz
Battery Life	15+ hours
Equalizer	Jazz, Rock, Classic, Pop, User
Play Mode	Normal, Repeat one, Repeat all, Random, Repeat random

All specifications are subject to change without notice.



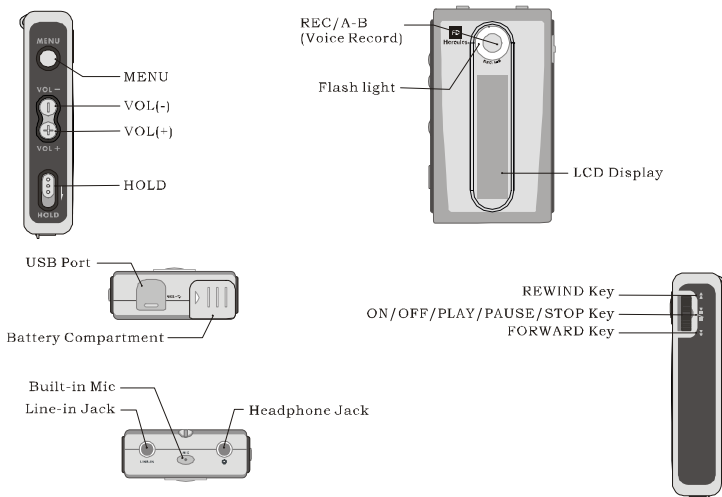
Some WMA encoders may have DRM enabled (Digital Right Management) which does not allow WMA file playback in portable device. For encoding with Windows Media Player 7.0 or above, there is a portable device function to transfer music to portable device. By using this function, the copy-right management will be automatically disabled so that the WMA file can be played in your portable device.

Notes:

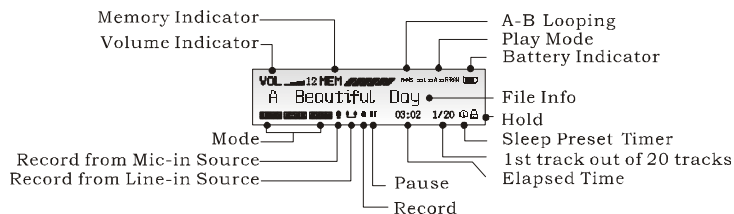
- MPEG Layer 3 audio coding technology licensed from Fraunhofer IIS and THOMSON Multimedia. Supply of this product only conveys a license for personal, private and non-commercial use and does not convey a license nor imply any rights to use this product in real time broadcasting (terrestrial, satellite, cable and other media) or broadcasting via internet or other networks, such as but not limited to intranets or in pay-audio or audio-on-demand application. An independent license for such use is required.
- Some copying may require the permission of the relevant copyright owner. We do not have the authority to grant such permission. Perception Digital and its resellers will not be liable for unlawful use of the above product.

Knowing Your PD-098-02

Name of parts



The Display Window



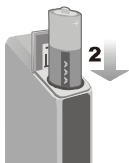
Memory indicator	Shows how much memory is used. The filled block represents the remaining memory. For 128MB, one block means about 21MB .
A-B looping	This special feature enables you to learn a language, repeat a voice recording or repeat your favorite section of the song .
Battery level indicator	Shows how much longer the battery can be used, level decreases as battery is used.

Knowing Your PD-098-02

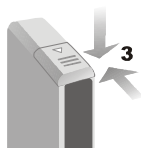
Inserting battery



Open the battery door according to this direction.



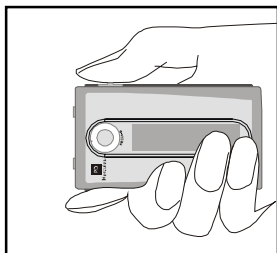
Put the battery into the compartment. Pay attention to the polarity.



Close the battery door.

Notes:

If you follow the picture below to grasp the player, it is easier to handle.



Turn on the player

Press and hold ►||/■



Make sure the **HOLD** button switch off. If not, “LOCKED” will display for your signal.

Turn off the player

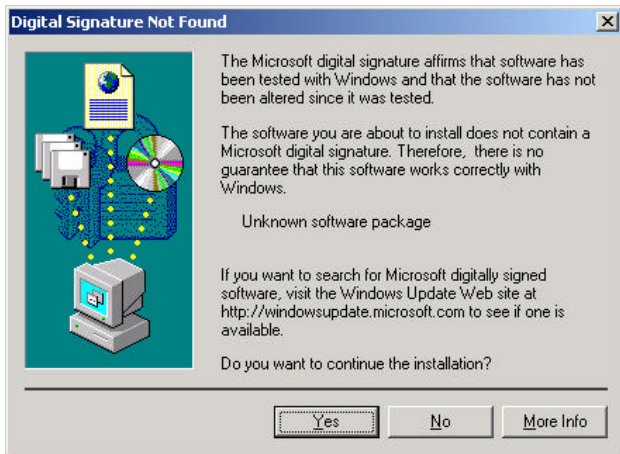
Press and hold ►||/■ (except when your player is connected to a PC)

Installing the Device

The MP3 player does not require any special program for transferring music files. Music files transfer can be done easily by simple drag- and-drop. It does not require to learn new software application.

Installing the USB device:

1. Make sure the MP3 player is unplugged from the USB port of your PC.
2. Insert the software installation CD that comes with the MP3 player into the CDROM drive of your PC, the installation should start automatically.
3. You can also start the installation manually by clicking “Start-> Run” in the windows. Enter “x:\setup.exe” in the space provided, where “x:” is the drive letter of your CDROM drive.
4. During installation, the USB driver is automatically installed and simply follow the instructions to complete installation of MP3 player firmware upgrader.
5. During the installation, the following pop-up window will appear:



Simply click “Yes” to continue installation.

Installing the Device

If you are using Windows XP, the following pop-up window will appear:



Simply click "Continue Anyway" to continue installation.

6. You are recommended to re-start the computer after installation is completed.
7. After re-start the computer you can connect your MP3 player to the USB port of your PC. A "New Hardware Found" window will appear when windows tries to recognizing your player.

Installing the Device

8. During the process of recognize your player, the following pop-up window will appear:



Simply click "Yes" to continue the process of recognizing your player.

If you are using Windows XP, the following pop-up window will appear:



Installing the Device

Simply click "Continue Anyway" to continue the process of recognizing your player.

9. If the player is connected to your PC, you will see "USB Connected" on the player screen.

Notes:

- If the connection failed, open the device manager in windows. Make sure that "MP3 player" is installed. If not, please make sure you have administrative rights in windows and run the installation again.
- You can also download the USB driver and the firmware upgrader at www.perceptiondigital.com download page.

Transferring files

1. Switch on the player and connect it securely to the PC with the USB cable.
2. Double click on "My Computer" on the desktop of windows, there will be an additional drive created.
3. To download music files to your MP3 player, simply drag the files from the windows explorer and drop them to the newly created drive. You can also upload files from the player to the PC by doing the reverse *.

The player can also be used as an external drive for storage of non-music files.

Notes:

- * User must be aware that uploading MP3 files without permission from the content owner is against the copyright laws.
- # You are recommended to right click the drive and select "Jump" to quit so as to ensure you exit safely without the risk of file corruption.



1. Only unplug the USB cable when the downloading procedure is completed. DO NOT unplug the USB cable when the LCD is still displaying "USB writing" as doing so may corrupt the files stored in the player and you will need to REFORMAT the MP3 player. Also, if the player encounters abnormal interruption during recording such as battery removal, you may also need to REFORMAT it.
2. Our MP3 player do not support WAV files downloaded or created by user. It only support WAV files recording direct from the MP3 player.

Firmware Upgrader

PD-098-02 firmware upgrader enables you to perform firmware upgrade, if new firmware is available, to enhance your PD-098-02 MP3 player or to obtain new features.

You're recommended to perform firmware upgrade regularly and to go to www.perceptiondigital.com to check for new software release.

Minimum system requirement

1. Windows98, 2000, ME, XP, XP Pro, XP home
2. Pentium II 233MHz
3. 32 MB RAM
4. 56Kbps modem internet connection
5. USB1.1

Operating controls

Operating in Music Mode

The following tables show all key response under different operations in music mode.

Music Playing Mode

Key	Key action	Browsing	Playing
▶ /■	Short	Play current track	Stop/Pause current track
	Long	Power off	Power off
▶▶	Short	Move to next track	Play next track
	Long	Move to next track continuously	Fast forward
◀◀	Short	Move to previous track	Play previous track
	Long	Move to previous track continuously	Fast backward
MENU		Enter Menu	Enter Menu
VOL +		Increase the volume	Increase the volume
VOL -		Reduce the volume	Reduce the volume
REC/A-B		Start recording	Set point A (A-B loop function)
→ HOLD	On/Off	All keys are locked	All keys are locked

Music Recording Mode

Key	Key action	Recording
▶ /■	Short	Pause / Resume recording
	Long	Power off
▶▶	Short/Long	No response
◀◀	Short/Long	No response
MENU		No response
VOL +		No response
VOL -		No response
REC/A-B		Stop recording
→ HOLD	On/Off	All keys are locked

Operating controls

Operating in Voice Mode

The following tables show all key response under different operations in voice mode.



Voice Playing Mode

Key	Key action	Browsing	Playing
▶ /■	Short	Play current track	Stop/Pause current track
	Long	Power off	Power off
▶▶	Short	Move to next track	Play next track
	Long	Move to next track continuously	Fast forward
◀◀	Short	Move to previous track	Play previous track
	Long	Move to previous track continuously	Fast backward
MENU		Enter Menu	Enter Menu
VOL +		Reduce the volume	Reduce the volume
VOL -		Decrease the volume	Decrease the volume
REC/A-B		Start recording	Set point A (A-B loop function)
→ HOLD	On/Off	Hold icon will be turned on	Hold icon will be turned on



Voice Recording Mode

Key	Key action	Recording
▶ /■	Short	Pause / Resume recording
	Long	Power off
▶▶	Short/Long	No response
◀◀	Short/Long	No response
MENU	Short/Long	No response
VOL +	Short/Long	No response
VOL -	Short/Long	No response
REC/A-B	Short/Long	Stop recording (Go back to previous screen)
→ HOLD	On/Off	All keys are locked

Detailed Controls

Switching Modes

The MP3 player supports two operation modes: the music mode, and the voice mode. To switch mode, press the **MENU** , press **▶||/■** to select mode, use **◀/▶** to select the desired mode, then press **▶||/■** to confirm.

Playing Music or Voice files

1. Play, stop

Press **▶||/■** to play tracks, and again to stop.

2. Selecting tracks

- a. While playing, press the **▶** shortly to play next track, press the **◀** to play previous track.
- b. Pressing **▶** or **◀** while player is stopped lets you browse through the tracks stored in memory

3. Moving within track

Press the **▶** or **◀** for more than 1 second to fast forward and fast backward.

4. A-B looping

While playing music or voice, press "**A-B**" , to mark the point where you want the section to start (Point A). Press "**A-B**" again where you want the section to end (Point B), then the section will repeat continuously.

5. Delete tracks or voice file

Choose delete from **MENU**, using **▶** or **◀** to select tracks or voice file and press **▶||/■** to delete.

Recording

1. Music recording in music mode

This function enables you to record any audio source. Connect the audio source to line-in jack by a stereo cable.



Detailed Controls

Press the **REC** to start recording in music mode. To stop recording, press **REC** again. When recording, a " ● " will be shown. Press ►||/■ to pause or resume recording.

Note:

The default recording source is Mic-In. If you want to change the recording source to record music, you need to change to line-in before recording. Please refer to system settings.

2. Voice recording in voice mode

Press the **REC** button to start recording in voice mode. To stop recording, press **REC** again. When recording, a " ● " will be shown. Press ►||/■ to pause or resume recording.

Menu Settings

This section explains all settings which controls the functions under different modes. To change the settings, use ►► & ◀◀ to move to each particular item. Press ►||/■ to enter into the sub-menu, use ►► & ◀◀ to choose the desired settings. Press ►||/■ to confirm, you need to enter **MENU** under different modes to change the settings.

The following table shows all key response for menu setting in different mode:

KEY	key action
MENU	Enter/exit menu
◀◀/►►	Move left/right
► /■	Enter into sub-menu/confirm
Others	No response

Menu settings in Music Mode

MENU **MODE** PITCH PLAYMODE EQ DELETE SETTING

Switching to
Music Mode.

MODE **MUSIC** VOICE

Music: Switch to music mode

Voice: Switch to voice mode

Playmode

PLAYMODE **NORMAL** REPEAT ONE REPEAT ALL RANDOM RPTRANDOM

Normal: Play all tracks in the selected album in order and stop after playing

Repeat One: Keep repeating the current track in the selected album

Repeat All: Play all tracks in the selected album in order and repeat

Random: Select a track in the selected album randomly, play the track and repeat the process.

Rpt Random: Keep repeating all tracks randomly.

Menu Table

Equalizers

EQ NOR ROC JAZ **CLA** POP USER

Select Normal, Rock, Classic, Jazz, Pop and User default

USER BASS TREBLE

Bass: Set bass from levels 1 to 4 (1 is the weakest and 4 is the strongest)

Treble: Set treble from levels 1 to 4 (1 is the weakest and 4 is the strongest)

Deleting Files

DELETE ?

Pitch

Conversion

MENU MODE **PITCH** PLAYMODE EQ DELETE SETTING

PD-098-02 is equipped with a special function that allows you to convert the pitch of the song. You can really have fun to use this function to change the voice from a male singer to a female singer and vice versa.

You can convert the pitch in menu mode.

PITCH



Menu setting in Voice Mode

MENU **MODE** DELETE SETTING

Switching to
Voice Mode.

MODE MUSIC **VOICE**

Music: Switch to music mode

Voice: Switch to voice mode

Deleting Files

DELETE ?

Refer to page19.

Menu Table

System Settings

Here are all the items inside system settings

SOURCE SLEEP RESUME SCROLL CONTRAST DEFAULT VERSION FLASH IDLE

To change system settings, use ► & ◀ to move to each particular system setting sub-menu and press ►/■ to enter the sub-menu. Use ► & ◀ to choose the desired settings. Press ►/■ to confirm.

1. Source: This menu helps you select the recording source. Selecting line-in means recording from line-in source while selecting mic-in means recording from the built-in mic.

SOURCE LINE-IN MIC-IN

2. Sleep preset: Presetting 15 means the device will automatically power off in 15 minutes.

SLEEP OFF 15 30 45 60

3. Resume: **Use** ►/◀ switch between "On" and "Off". Enabling the resume function will go to the last track after you power on the device again.

RESUME ON OFF

4. Scrolling speed: There are 5 scrolling speed levels, 4 is the fastest. You can choose off to disable scrolling.

SCROLL SP OFF 1 2 3 4

5. Contrast level: Use ► or ◀ to set the contrast level from 1 to 10.

CONTRAST 1 2 3 4 5 6 7 8 9 10

6. Default setting: You may choose to save your settings as default by pressing either "Yes" or "No".

DEFAULT YES NO

Menu Table

7. Version number: For checking the firmware version of this player.

VERSION FG-A-B-F-1.0

8. Flash light: There are 4 flash light levels, 10, 30, 60, permanent. It means the flash light will be on for 10, 30, 60 seconds or permanent when playing music or voice.

FLASHLIGHT OFF 10 30 60 PERM

9. Idle Time: The device will automatically power off when it is left idle for say 3 minutes .

IDLE TIME OFF 3 5 10 30

Troubleshooting

1. The player does not work or nothing is displayed on the LCD	Check the capacity and the polarity of the battery. The player will automatically shut down to save power if it is left idle for 1 minute.
2. The buttons are not responding	Check if the "Hold" button on the main unit is locked . If yes, buttons will have no response.
3. Unable to play MP3 file	Check if the memory contains any MP3 files. Check if the player is in the music mode.
4. Unable to play ADPCM file	Check if the memory contains any VOC files. Check if the player is in the voice mode.
5. Unable to record via line-in	Check if there is enough space in the selected memory. Check if the cable is stereo and connected to the device properly.
6. A-B looping function is not working	This function is only working during playback.
7. Unable to install software or driver	Our installation CD only supports windows 98, 2000, ME, XP, XP pro and XP home. Other system is not supported.
8. Unable to find the mass storage device after connected to the PC.	Make sure you have installed the correct driver. Make sure the player is power on and ready. Make sure USB device is installed. You may check this in the "Device manager" in your PC.
9. How to reset MP3 Player to factory default settings.	Choosing default setting in system settings. By choosing "YES" allow you to reset the player to factory default settings.

Company Contacts

For United States:

Perception Digital Service Center (Sunnytech)

Toll Free Service Hotline: 1-866-661-2340

Service Fax Number: 1-408-986-8115

Service Email: ustechnical@perceptiondigital.com

For International Enquiries:

sales@perceptiondigital.com

Free Manuals Download Website

<http://myh66.com>

<http://usermanuals.us>

<http://www.somanuals.com>

<http://www.4manuals.cc>

<http://www.manual-lib.com>

<http://www.404manual.com>

<http://www.luxmanual.com>

<http://aubethermostatmanual.com>

Golf course search by state

<http://golfingnear.com>

Email search by domain

<http://emailbydomain.com>

Auto manuals search

<http://auto.somanuals.com>

TV manuals search

<http://tv.somanuals.com>