

EXTRA Value!

Purchase a coverstyle

and receive 2 extra presser feet!



Gathering can be so easy!

The Gathering/Shirring Foot is perfect for simultaneously stitching and gathering two layers of fabric.










Perfect belt loops!

The Strap and Belt Loop Foot L is used to create straps and belt loops with a cover stitch.



cover|style

All stitches at a glance!

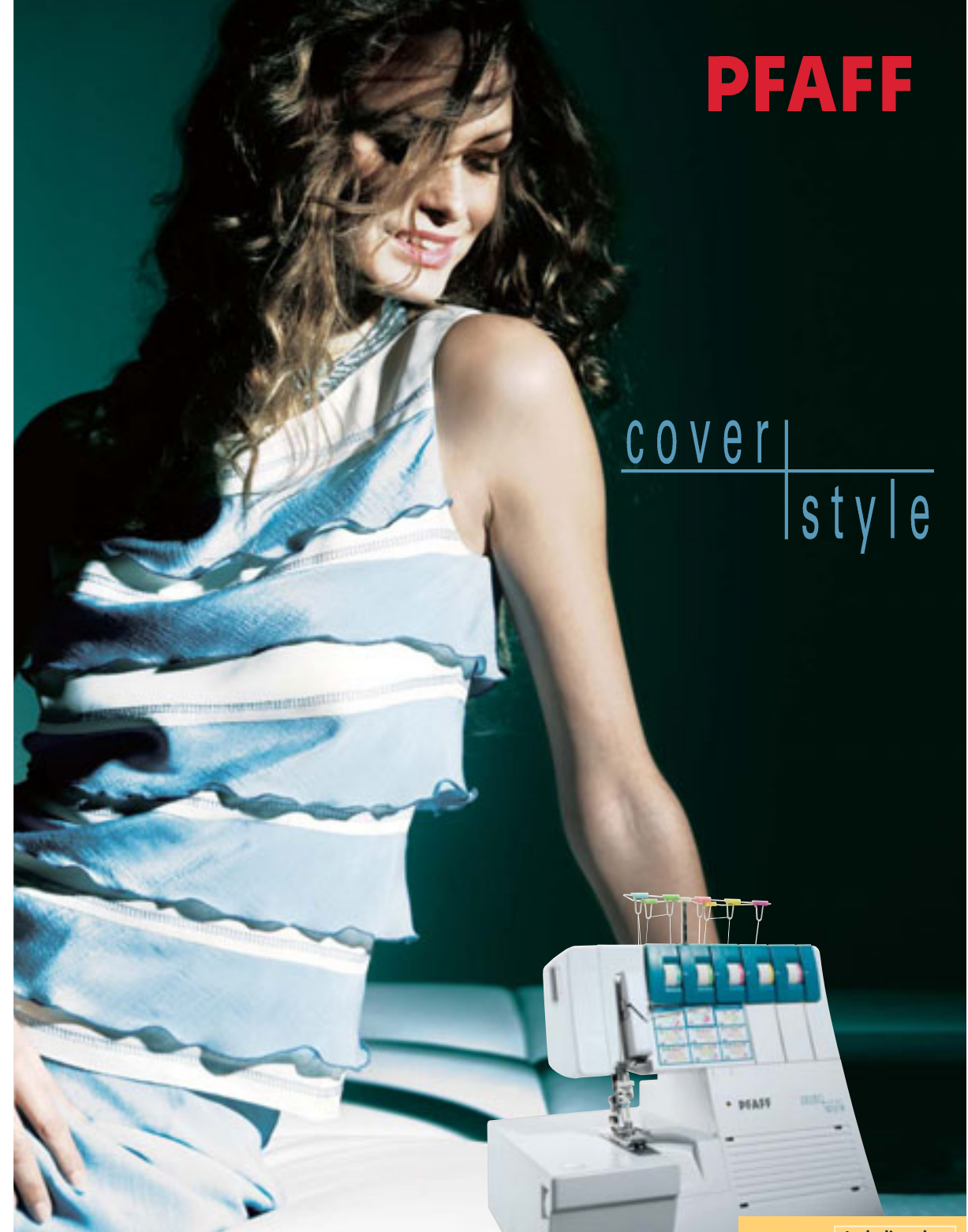
Stitch category	Description of stitch	Stitch use
Cover stitch, 5 mm 		For hemming stretch fabrics and for decorative effects.
Double chain stitch 		For stitching especially durable seams, like upholstery and denim, with no overedge finishing. Also used for decorative effects.
Overedge stitch 	4-thread	For stitching seams and simultaneously finishing edges on all types of fabric, especially stretch fabric.
	3-thread, wide	For finishing medium-heavy to heavy fabrics that fray easily.
	3-thread, narrow	For finishing light fabrics that fray easily.
	2-needle, 3-thread	For stitching seams and finishing edges on lightweight, very elastic fabrics.
Finishing 	3-thread, wide	For finishing heavy fabrics not prone to fraying.
	2-thread, narrow	For finishing lightweight fabrics not prone to fraying.
Safety stitch 	4-thread	For stitching and simultaneously finishing heavy fabrics.
	5-thread	For stitching and simultaneously finishing heavy fabrics.
Rolled hem 	3-thread	For finishing light to medium-weight fabrics and as a decorative edge finish.
	2-thread	For finishing very fine fabrics and as a decorative edge finish.
	3-thread, folded	For finishing light to medium-weight fabrics and as a decorative edge finish.
	2-thread, folded	For finishing very fine fabrics and as a decorative edge finish.
Flatlock 	3-thread, wide	As a flatlock seam to sew stretch fabrics together with a decorative effect and as a decorative finish. Also for finishing medium-heavy fabrics.
	3-thread, narrow	As a flatlock seam to sew stretch fabrics together with a decorative effect and as a decorative finish. Also for finishing medium-heavy fabrics.
	2-thread, wide	As a flatlock seam to sew stretch fabrics together with a decorative effect or to finish medium-heavy fabrics.
	2-thread, narrow	As a flatlock seam to sew stretch fabrics together with a decorative effect or to finish medium-heavy fabrics.

Your Pfaff dealer:

www.pfaff.com

PFAFF

cover|style



Special Edition

NEW! With an innovative design and many popular features at a great price!

EXTRA Value!

Including the
Gathering Foot &
Belt Loop Foot.

We reserve the right to change the machine equipment and the assortment of accessories without prior notice, or make modifications to the performance or design.

© 2006 VSM Group AB, Sweden. All rights reserved. All statements valid at time of printing. Download from www.seamwork.com All Manuals Search And Download.

000384-26

cover|style

Pfaff coverstyle for perfect results

Do you love to sew ? Do you enjoy working with all of today's wonderful fabrics ?

Do you want the results to be as perfect as the best ready-to-wear? Then you need the Pfaff coverstyle to sew, finish and hem in one easy step to get that ready-to-wear finish! It's the perfect partner to your sewing machine. It picks up where your sewing machine stops.



Innovative
German Design!

Special Edition

EXTRA Value!
Purchase a coverstyle

and receive the **Gathering Foot & the Belt Loop Foot.**

The must haves for everyone who loves to sew.

The perfect hem, sewn with the coverstitch !

Take a look at the hem on your own sweat-shirt. What you see is a cover stitch with the typical double needle effect on the right side and a perfect thread finish on the inside. The Pfaff coverstyle stitches all of this in one step. You should see it in action – just watching the coverstyle work is fun.



A Pfaff coverstyle stitches a seam and finishes the edges in one step. It's fast and perfect!



The perfect 5 mm hem, sewn with the cover stitch.

Sew, finish and hem in one step with the Pfaff coverstyle

Professionals know that each type of fabric needs special treatment. Two needles, five threads and 18 stitch programs give you the freedom to make all of your ideas a reality. No matter what fabric you prefer to use, Pfaff coverstyle has the perfect stitch for it.

Sewing, finishing and creating!



The 5-thread safety stitch – a true professional stitch. Ideal for everything that has to take a lot of wear and tear.



Decorative effect – the **2-thread flatlock stitch!**

Perfectly even seams, thanks to differential feed!

Two sets of feed dogs in a row guarantee that the seam doesn't stretch or pucker. This is especially important when working with fine fabrics like silk or viscose/rayon or with stretch fabrics like jersey or knits. Differential feed is a "must have" that's available on the Pfaff coverstyle.



For a sophisticated touch, you can create beautiful wavy or gathered effects by reversing the feed settings. It's easy with the Pfaff coverstyle!

Pfaff coverstyle It's so easy to use!



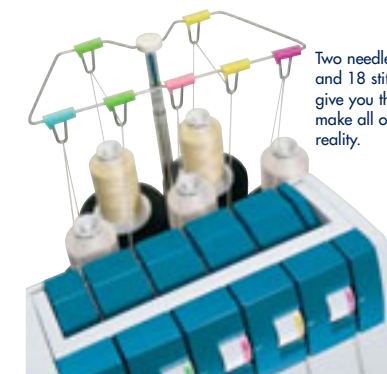
Adjustable stitch and cutting width. All important settings are within easy reach on the outside of the machine.



Clean cut! The sharp knives trim away excess fabric – even when working with several layers.



Clear and simple: On the front of Pfaff coverstyle you'll find the exact thread tension settings for each stitch. That's the secret to perfect stitching results. And threading is easy, thanks to color-coded threading paths and special threading levers.



Two needles, five threads and 18 stitch programs give you the freedom to make all of your ideas a reality.

ALL FEATURES at a glance!

- **Perfect sewing, trimming, and finishing in one step!**
- **2 needles, 5 threads and 18 stitch programs**
- **The 5 mm cover stitch** for sewing and hemming in one step or for creating fantastic decorative effects.
- **The decorative 2-thread flatlock stitch** is extremely flat and elastic. Perfect for decorative effects.
- Professional stitch: **the 5-thread safety stitch!**
- Durable stitches with the **double chain stitch!**
- **EXTRA Value!** Purchase a coverstyle and receive the **Gathering Foot and the Belt Loop Foot.**
- **Easy threading!** All threading paths are color-coded.
- **All important settings are within easy reach** on the outside of the machine.
- Ease of use, simply change needle positions, switch to the sewing table, disengage the knife and you are ready to sew a cover stitch.
- Change the presser foot? Easy on and easy off, thanks to **"snap-on" system.**
- In addition, **integrated threading levers** to thread loopers easily.
- **Perfectly even seams!** The differential feed prevents seams from stretching or puckering.
- **Each fabric is optimally fed.** Presser foot pressure can be individually set.
- **Generous work area** with the sewing table in place!
- **Sew rolled hems easily** without changing the presser foot or needle plate.
- **The presser foot lift is conveniently placed,** leaving your hand free to hold the fabric.
- **High presser foot lift** to accommodate several layers and heavy fabrics.
- All included! **Lots of accessories in the practical accessory box.**

Free Manuals Download Website

<http://myh66.com>

<http://usermanuals.us>

<http://www.somanuals.com>

<http://www.4manuals.cc>

<http://www.manual-lib.com>

<http://www.404manual.com>

<http://www.luxmanual.com>

<http://aubethermostatmanual.com>

Golf course search by state

<http://golfingnear.com>

Email search by domain

<http://emailbydomain.com>

Auto manuals search

<http://auto.somanuals.com>

TV manuals search

<http://tv.somanuals.com>