

PhatNoise Home Digital Media Player

User's Manual

Part# 1501-MAN

1	Getting Started.....	9
2	Using the Front Panel Display	13
3	Using the TV Display	29
4	Music Management	61
5	Support.....	93

Contents

1	Getting Started	9
2	Using the Front Panel Display	13
2.1	Setting up for use without a TV	13
2.2	Turning on the system	15
2.3	How the Home Player is Organized	16
2.4	Browsing the Main Menu	18
2.5	Choosing music to play from the Main Menu	18
2.6	Navigating the Playback screen	21
2.7	Playing music using SSA	23
2.8	Settings Menu	25
2.9	Future Features	27
3	Using the TV Display	29
3.1	Setting up for use with a TV	29
3.2	Turning on the system	32
3.3	Setting up the Graphical Interface Software	33
3.4	Setting the Video Mode	44
3.5	How the Home Player is Organized	45
3.6	Browsing the Main Menu	47
3.7	Choosing music to play from the Main Menu	48
3.8	Navigating the Playback screen	52
3.9	Playing music using SSA	55
3.10	Settings Menu	57
3.11	Future commands	59

CONTENTS

4 Music Management	61
4.1 Installing the PhatNoise Music Manager software	61
4.2 Installing the USB Cradle and DMS Cartridge	62
4.3 PhatNoise CD Manager	66
4.4 PhatNoise Music Manager	68
4.5 Downloading cover art for your music	85
4.6 Information on MP3 Files and ID3 Tags	92
5 Support	93

FCC WARNING

This equipment may generate or use radio frequency energy. Changes or modifications to this equipment may cause harmful interference unless the modifications are expressly approved in the instruction manual. The user could use the authority to operate this equipment if an unauthorized change or modification is made.

NOTE

This equipment has been tested and found to comply with the limits for a Class B digital device, pursuant to Part 15 of the FCC Rules. These limits are designed to provide reasonable protection against harmful interference in a residential installation. This equipment may cause harmful interference to radio communications, if it is not installed and used in accordance with the instructions. However, there is no guarantee that interference will not occur in a particular installation. If this equipment does cause harmful interference to radio or television reception, which can be determined by turning the equipment off and on, the user is encouraged to try to correct the interference by one or more of the following measures:

- Reorient or relocate the receiving antenna.
- Increase the separation between the equipment and the receiver.
- Connect the equipment into an outlet on a circuit different from that to which the receiver is connected.
- Consult the dealer or an experienced radio/TV technician for help.

PLEASE READ AND UNDERSTAND ALL INSTRUCTIONS

Installation Precautions

Precautions to ensure and observe:

- The unit is not subject to direct sunlight.
- The unit is not near heat sources (such as heaters).
- The unit is not exposed to rain or moisture.
- The unit is not exposed to excessive dust, sand or dirt.
- The unit is not subject to excessive vibration.

Digital Media Storage Cartridge Precautions

- Do not remove the DMS Cartridge from the Player unless the Player is turned off.
- Do not remove the DMS Cartridge from the USB Cradle until downloading is complete.
- Do not leave the DMS Cartridge in locations with high temperatures and high humidity, such as on a car dashboard or in the rear window where it will be subject to direct sunlight. Do not subject the DMS Cartridge to extreme cold temperatures.
- Do not place more than one DMS Cartridge at a time into the PhatNoise player.

CONTENTS

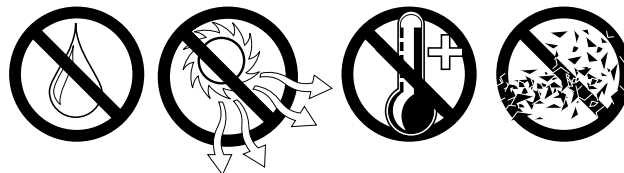
- Do not drop the DMS Cartridge or subject it to a violent shock.
- Do not spill liquid on the DMS Cartridge or submerge the DMS Cartridge in liquid.
- The only effective protection for data and other material stored on the DMS Cartridge is the regular backing up of that data by you, the consumer. PhatNoise Inc. shall not be responsible for the loss of any such data or other material.

PhatNoise Player and USB Cradle Precautions

- Never spill liquid of any kind on the Player.
- Do not place the player on an unstable cart, stand or table. The product may fall, causing serious damage to the product.
- Do not use any object to probe the opening of the product and do not put any body parts or other foreign objects in the opening of the product- this may result in bodily injury and can also damage the product.
- Avoid severe impact. Do not drop the player on a solid surface or drop a heavy object on the player.
- Take care when plugging and unplugging cables.
- Do not hold the player or the USB Cradle by the cables alone.
- Do not remove the DMS Cartridge from the USB Cradle when the green activity light is on.

Do not attempt to service any part of the product yourself. Servicing should only be done by qualified service personnel.

Safety and Handling Precautions



- Do not place this system on the rear deck of a car where it will be subjected to direct sunlight and high temperatures.
- Do not place this system where it will be subjected to hot air from the heater or any other high-temperature location.
- Do not place this system where you cannot firmly secure the unit, or in high-vibration areas.
- Do not place this system in an area of high humidity or where large amounts of airborne dust/dirt are present.

Copyright and Patent Notices

Copyright 2003, PhatNoise, Inc. - All Rights Reserved. All trademarks, service marks and tradenames, including without limitation, PHATNOISE, PHATNOISE CAR AUDIO SYSTEM, PHATNOISE MUSIC MANAGER, PHATBOX, SSA/VOICE, DPGT, PHATNOISE HOME DIGITAL MEDIA PLAYER, and DMS are proprietary to PhatNoise, Inc.

Gracenote is CDDb, Inc. d/b/a "Gracenote." CD and music-related data from Gracenote CDDb © Music Recognition ServiceSM ©2000, 2001, 2002 Gracenote. Gracenote CDDb Client Software ©2000, 2001, 2002 Gracenote. U.S. Patents Numbers #5,987,525; #6,061,680; #6,154,773, and other patents issued or pending.

CDDb is a registered trademark of Gracenote. The logo and logotype, the Gracenote CDDb logo and logotype, and the "Powered by Gracenote CDDb" logo are registered trademarks of Gracenote. Music Recognition Service and MRS are service marks of Gracenote.



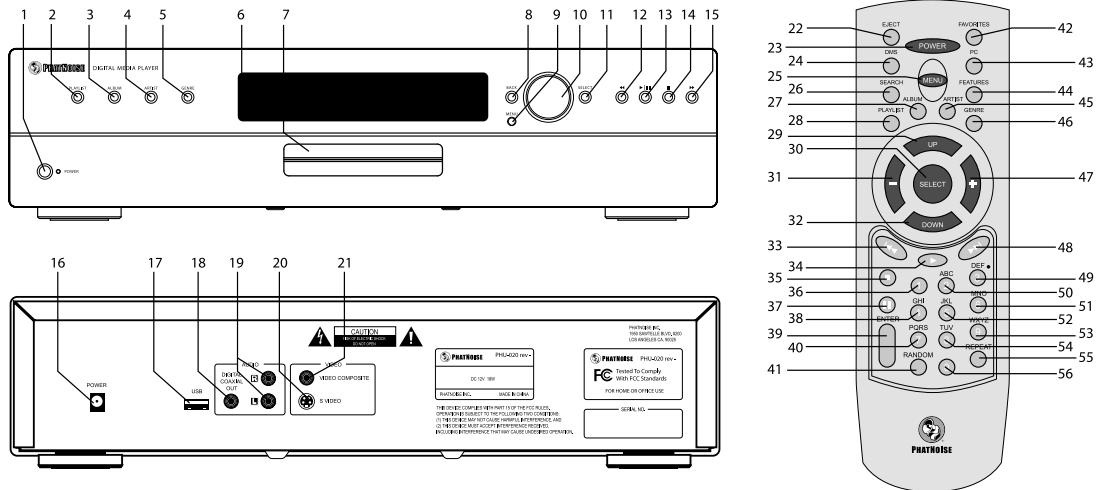
CONTENTS

Section 1

Getting Started

Congratulations on your purchase of the PhatNoise Home Digital Media Player! This section will guide you through the main features and components that are in the Home Player package. Please read through this section to make sure you have each of the included pieces.

PhatNoise Home Player

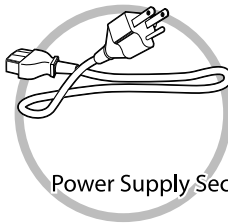


- | | | | |
|-----------------------------------|------------------------------------|------------------------------|--------------------------|
| 1. Front Panel Power Button | 16. Power Supply Plug | 31. Previous Category Button | 46. Genre Button |
| 2. Front Panel Playlist Button | 17. USB 2.0 Jack | 32. Browse Next Button | 47. Next Category Button |
| 3. Front Panel Album Button | 18. Digital Audio Coaxial Out Jack | 33. Back Button | 48. Forward Button |
| 4. Front Panel Artist Button | 19. RCA Audio Out | 34. Play Button | 49. 3 Button |
| 5. Front Panel Genre Button | 20. Video Composite Out | 35. Stop Button | 50. 2 Button |
| 6. Front Panel LCD Display | 21. S Video Out | 36. 1 Button | 51. 6 Button |
| 7. DMS Cartridge Dock | 22. Eject Button | 37. Pause Button | 52. 5 Button |
| 8. Front Panel Back Button | 23. Power Button | 38. 4 Button | 53. 9 Button |
| 9. Front Panel Menu Button | 24. DMS Button | 39. Enter Button | 54. 8 Button |
| 10. Front Panel Browse Dial | 25. Menu Button | 40. 7 Button | 55. Repeat Button |
| 11. Front Panel Select Button | 26. Search Button | 41. Random Button | 56. 0 Button |
| 12. Front Panel Forward Button | 27. Album Button | 42. Favorites Button | |
| 13. Front Panel Play/Pause Button | 28. Playlist Button | 43. PC Button | |
| 14. Front Panel Stop Button | 29. Browse Previous Button | 44. Features Button | |
| 15. Front Panel Back Button | 30. Select Button | 45. Artist Button | |

What's Included



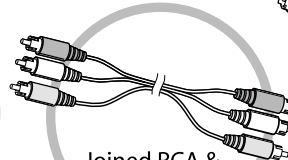
PhatNoise Home Player



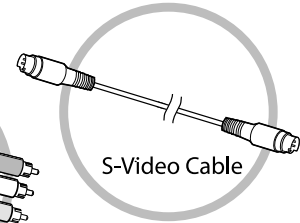
Power Supply Section B



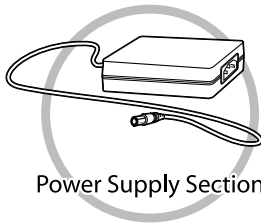
PhatNoise Music Manager Software



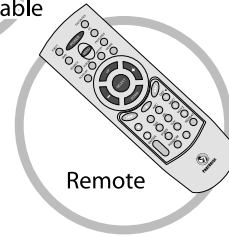
Joined RCA & Composite Video Cable



S-Video Cable



Power Supply Section A



Remote



Tip: The DMS cartridge is not a standard part of the Home Player package, but is required for Home Player to operate.



Section 2

Using the Front Panel Display

This section presents all the things you can do with the PhatNoise Home Digital Media Player using the front panel LCD display. If you'd like to use the TV interface instead, please see the section *Using the TV Display* below on page 29.

2.1 Setting up for use without a TV

What you'll need:

1. **An audio amplifier or powered speakers.** You can connect the home player to standard home audio equipment just like a CD player. You can also use powered computer speakers as a small bedroom alternative to a large home stereo.

The home player features both analog and digital audio outputs. If your stereo equipment has a standard S/PDIF coaxial input jack, connect this to the S/PDIF output of the home player for the best audio fidelity.

2. **A wall outlet.** The home player's power adapter plugs into any standard wall power outlet.

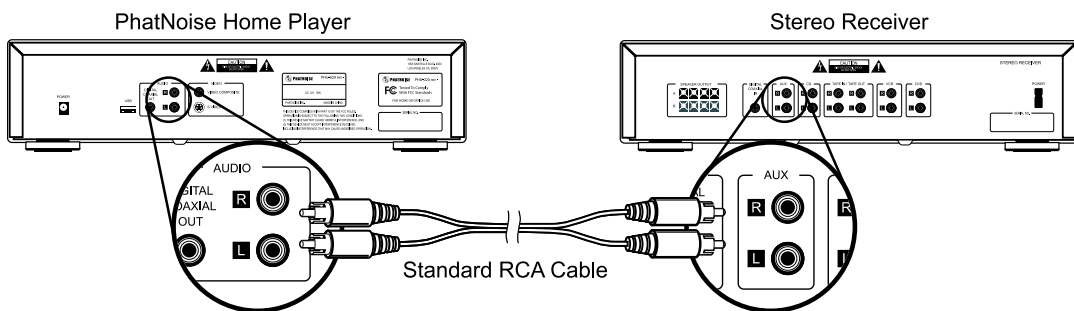
Step by step:

1. **Position the home player.** Place the home player unit wherever may be convenient for you, avoiding direct sunlight or high moisture locations.

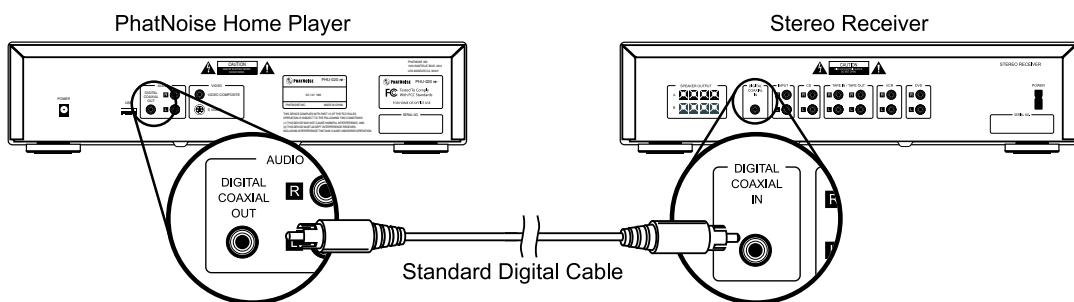


Tip: You may want to avoid placing the home player on a slippery surface – the unit may move when you insert or remove the DMS cartridge.

- 2. Connect the analog or digital audio jacks.** For an analog audio connection, connect the Left and Right RCA jacks to a suitable audio input of your home stereo. Common audio inputs that work well may be labelled 'CD' or 'AUX'. You can alternatively connect the analog outputs to a set of powered computer speakers by using an RCA to headphone-style adapter (not included).

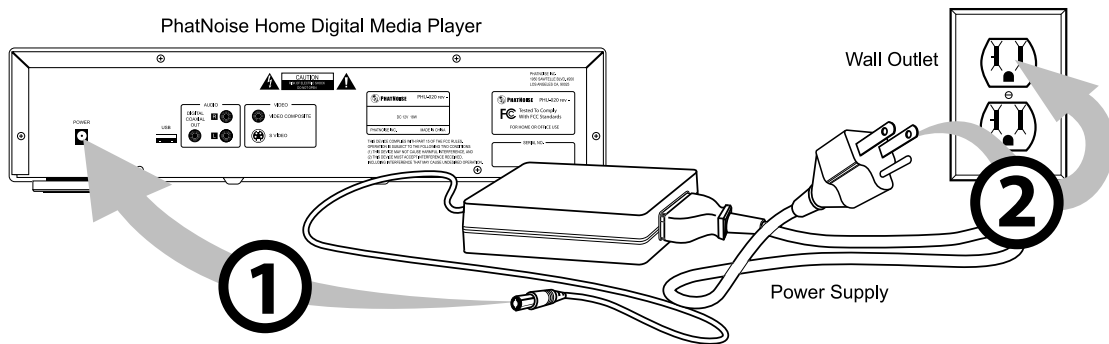


If you are using digital audio, use a single cable from the home player's S/PDIF output jack to the coaxial digital input of your home stereo.



- 3. Connect the power supply.** Insert the small power supply plug into the power input jack of the

home player, then plug the power cord into your wall outlet.

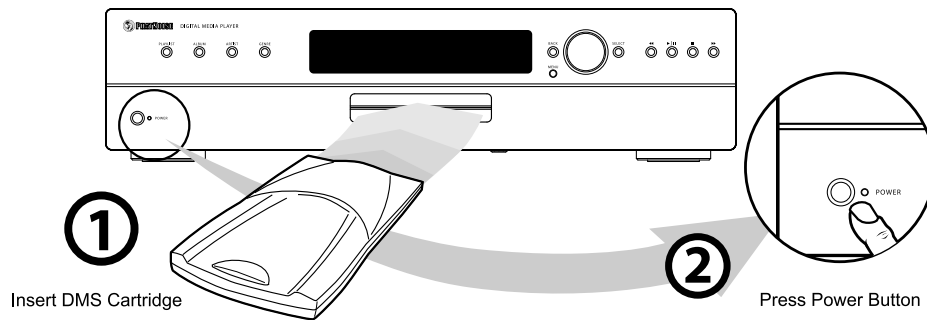


2.2 Turning on the system

1. The home player will initialize for a few moments as soon as it is plugged in. The controls will not operate while the system is initializing.

Initializing

2. When the system is done initializing, all the lights and the LCD display will turn off.
3. To begin, simply insert a cartridge, and press the power button. The display will illuminate, and the power indicator will turn on.



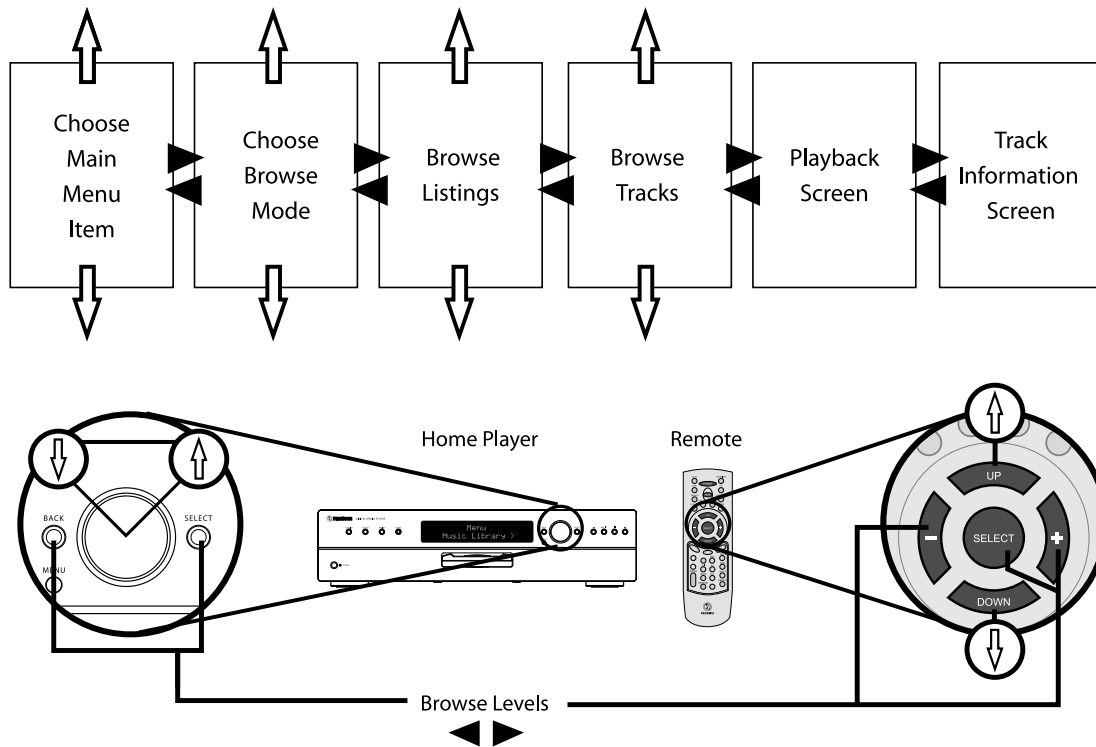
When the home player turns on, you will see a set of different colored lights. This is what the colors mean:



- *Red: The home player is doing a self check of hardware.*
- *Amber: The home player is loading its system software.*
- *Green: The home player is up and running.*

2.3 How the Home Player is Organized

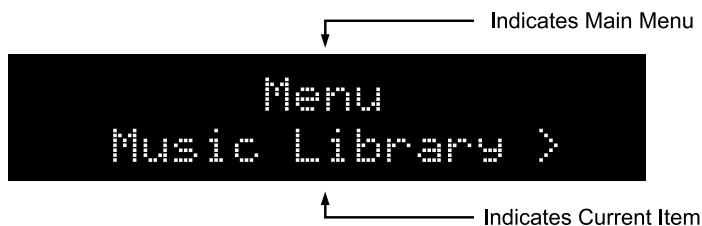
The PhatNoise Home Digital Media player is organized for fast and easy access to the most common features. Most of the navigation is done by a small set of controls, with the remaining controls used as shortcuts.



- **From the remote control** The *up* and *down* buttons browse through the items available. The *select* button chooses an item and moves to the next screen. The *-* button goes to the previous screen. (Note: the *+* and *select* buttons currently perform the same function)
- **From the front panel** The knob allows you to browse through the items available. The *select* button chooses an item and moves to the next screen. The *back* button goes to the previous screen.

2.4 Browsing the Main Menu

The first screen to appear is the main menu:



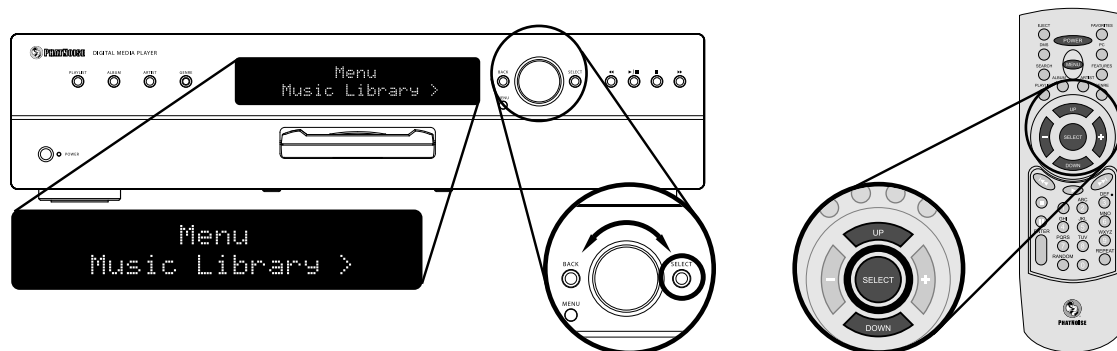
The top line indicates that you are viewing the main menu, and the bottom line shows the current item. Pressing the *up* or *down* buttons on the remote, or turning the knob on the front panel will change the current item. Pressing the *select* button will choose the item displayed.

This menu has the following default menu items:

- **Music Library.** Selecting this item will show different ways of browsing the music library in your system.
- **Settings.** The settings menu is explained in detail in section *Settings Menu* below on page 25.
- **Now Playing.** If a song is currently playing, this item will take you right to it.

2.5 Choosing music to play from the Main Menu

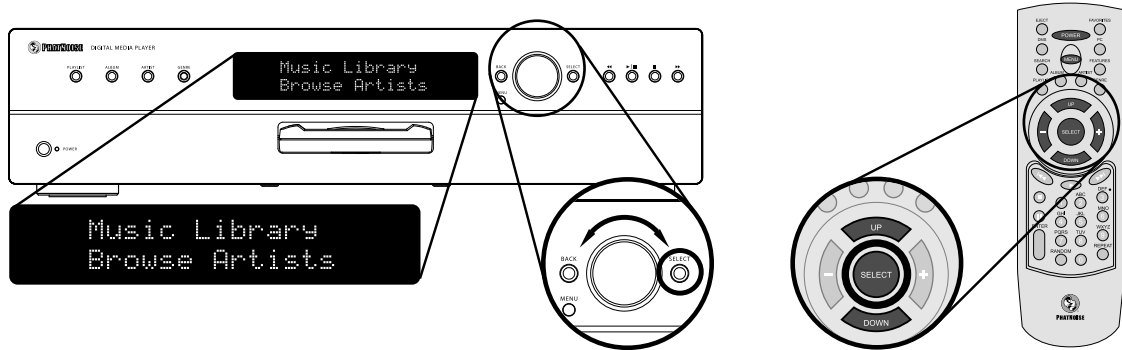
1. From the main menu, scroll to the first item, *Music Library*, and press select.



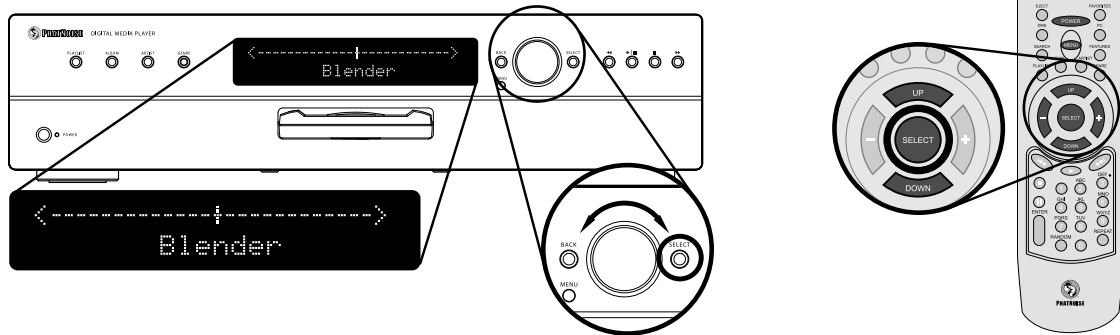
2. Next, choose how you would like to browse your music library. The home player features four browse modes for your music:

Mode	Meaning
Playlists	Display all the playlists available in your system. These playlists are made with the PhatNoise Music Manager.
Albums	Display all the albums available in your system. The albums are sorted first by artist, then alphabetically by album name.
Artists	Display all the artists available in your system, sorted alphabetically.
Genres	Display all the genres available in your system, sorted alphabetically.

Turn the scroll knob or press the *up* and *down* buttons on the remote to display each of the browse modes listed above.

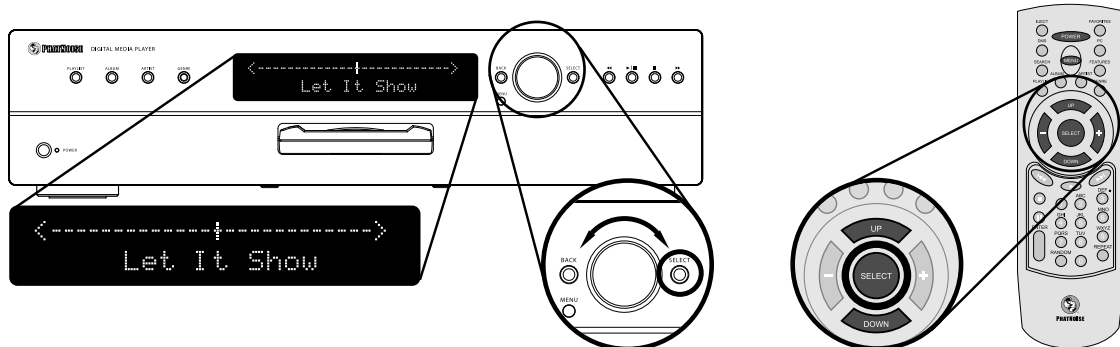


3. Make your selection by pressing the *select* button. The home player will display a list of items matching the browse mode you chose. A scroll bar is displayed on the top line, and the current item is displayed on the bottom line.



Tip: Press and hold the up or down buttons to scroll quickly through the list!

4. Press *play* to immediately begin playing, or
5. Press *select* instead. The system will show you the tracks from the Playlist, Album, Artist, or Genre that you selected. Press *select* one last time when the track you would like to play is displayed on the screen.

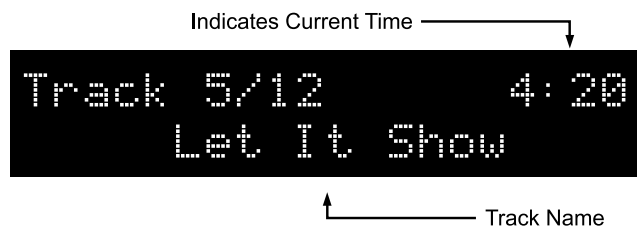




You may notice the messages that appear on the top line of the display. These are built in help messages to assist you in using the system. To turn these messages on or off, please see Settings Menu below on page 25

2.6 Navigating the Playback screen

The playback screen is what you see when a song is playing. Here's how it is laid out:



- **Track Number.** This shows you the current track number, as well as the total number of tracks queued.
- **Current time.** This is the current playback time position of the song.
- **Song title.** The name of the current song playing scrolls across the bottom of the display.
- **Play Light.** This light glows when a song is playing, blinks when a song is paused, and turns off if no song is playing.

The most common controls are placed on the front panel as well as on the remote control. These are summarized below:

Button	Meaning
▶ /	Play: begin playing the item shown on the display
	Pause: press the play button again on the front panel, or press pause on the remote to pause the current playback
▶▶	Track forward: Go forward one track
◀◀	Track backward: Go backward one track
■	Stop: stops the playback
▶▶▶	Seek forward: Press and hold the ▶▶ button to seek forward in the current track
◀◀◀	Seek backward: Press and hold the ◀◀ button to seek backward in the current track

Browsing while playing

While you are playing a track you can browse the songs that may be coming up in the queue.

1. Press the *up* or *down* buttons, or turn the scroll knob. The display will show the other tracks available.
2. If you see a track you wish to play, press *play* or *select* to switch to that track.
3. If you don't want to make a selection, simply wait a few moments for the screen to go back to the song currently playing.

Additional Song information

Press select while in the playback screen to see additional information about the current song. After a period of time the display will return to the playback screen, or you can press - to go back at any time.

The *Menu* and *Play* buttons

- *Menu* button: Press this to go directly to the main menu.
- *Play* button: Press the play button at any time to begin playback of the current selected set of songs. If no songs are selected, the home player will begin playing all the songs available.

Turning off the home player

Press either the *Power* or *Eject* buttons to turn the home player off. The home player will briefly save the current settings to the DMS cartridge, then turn itself off when done. Press the *power* button again to turn the home player on. When you turn the home player back on, it will resume where it left off.

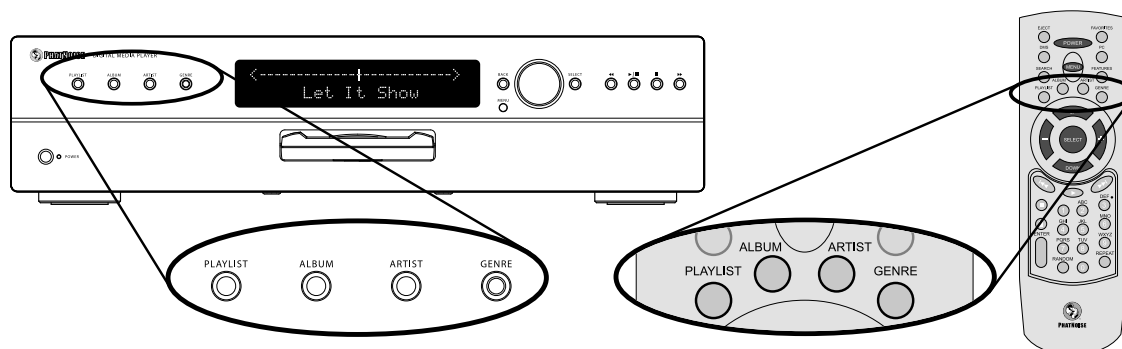


Tip: Make sure to turn off the home player before pulling out the cartridge! Otherwise, you may risk corrupting the contents of the DMS!

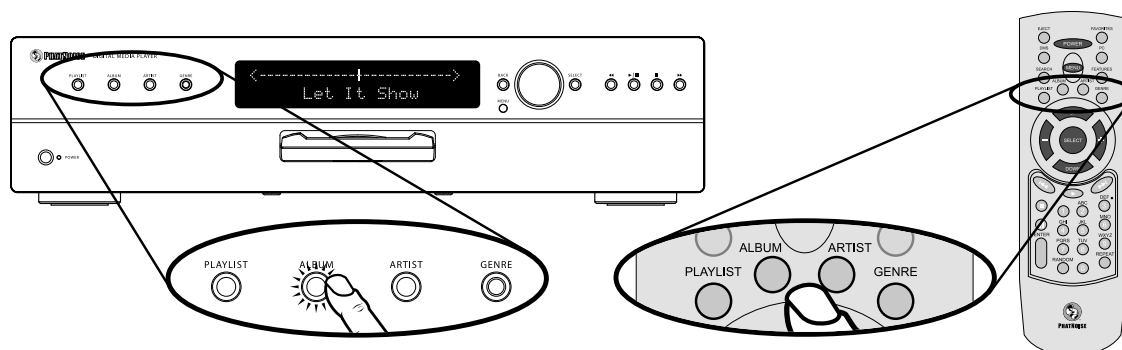
2.7 Playing music using SSA

The PhatNoise Home Digital Media Player features the SSA music organization feature, that not only makes browsing and playing music easier, but also gives you many more options for finding what you want. This section describes how to browse and play music using SSA.

1. On both the front panel and the remote control you will find four buttons, labelled *Playlist*, *Album*, *Artist*, and *Genre*.



- You can press one of these buttons at any time to display a list of content for that button. It is like a shortcut to the four browse modes mentioned above. Furthermore, when you press one of these buttons, the corresponding light will glow, indicating the selected browse style.



- Press *play* to immediately begin playing, or
- Press *select* instead. The system will show you the tracks from the Playlist, Album, Artist, or Genre that you selected. Press *select* one last time when the track you would like to play is displayed on the screen.

More from this Playlist, Album, Artist, or Genre

Whenever a song is shown playing on the display, you can press any of the buttons *Playlist*, *Album*, *Artist*, or *Genre* that are not lit to hear more songs that match that category. After a few moments and the player will return to the song playback screen. The current song will not be interrupted, but the songs coming up will be changed accordingly.

Example:

Every song has Playlist, Album, Artist, and Genre categories (these are called music tags). For example, "Love my way" by *Beth Jones* has the following tag information:

Playlist	Album	Artist	Genre
My Music	The Best of Beth Jones	Beth Jones	Rock

- Let's say we are listening to "Love my way", and the Artist button is lit. This means we are listening to all of *Beth Jones*' songs.

2. If we press the *Album* button just once, the system will change the queue of songs to just those that are from the current album "The Best of Beth Jones". Wait a few moments for the player to return to the song playback screen.

Browsing categories within categories

Press and hold any of the *Playlist*, *Album*, *Artist*, or *Genre* buttons that are not lit. The home player will only display the items that match both the existing selection **and** the button you just pressed.

Example:

1. Let's say we are listening to all songs whose Genre is *rock* (we know we are browsing by *Genre* since the *Genre* button is lit).
2. Press and hold the *Artist* button. Instead of showing all the artists available, the system will display all artists that have *rock* songs available (this is indicated by both the *Artist* and *Genre* lights illuminated).
3. On our DMS cartridge we have only *rock* songs by the artists Blender and Beth Jones. Use the + and - buttons to choose one of these two artists, or
4. do nothing and you are back to listening to all *rock* songs.



Currently the Home Player is limited to two browse modes lit at the same time. Three or more may cause unpredictable behavior.

2.8 Settings Menu

The settings menu currently consists of the following items:

- Random Settings
- Repeat Settings
- Video Settings
- Help Settings

You can get to the settings menu from the main menu. Use the *up* or *down* buttons, or turn the knob to browse through each of the items. Press the *select* button to choose the selected item, press the *-* or *back* buttons to leave the menu.

Each of the settings are explained below.

Random Settings

This menu allows you to turn the random function on or off. This menu is equivalent to pressing the random button on the remote control to toggle the random mode on or off.

Setting	Meaning
Random Off	Turn off the random mode, and play songs in a normal, sequential order.
Randomize List	Randomize the list of songs currently playing. For example, if one album is selected to play, the order of the songs within that album would be randomized.

Repeat Settings

This menu allows you to configure how the repeat function operates. This menu is equivalent to pressing the repeat button on the remote control multiple times, switching between the three modes listed below:

Setting	Meaning
Repeat Off	Turn off the repeat mode, and play songs in a normal, sequential order.
Repeat Track	Repeat the current song. When the currently playing song ends, the same song will start over.
Repeat List	Repeat the entire list of songs currently playing. For example, if an album is selected to play, the album playback will start over when the last song of the album is finished.

Video Settings

This menu allows you to change the video mode of the TV display. It has no affect if the home player is not connected to a TV.

Setting	Meaning
Composite Video	Switch the video output to the composite video mode.
S-Video	Switch the video output to the 'Super VHS' video mode.

Help Settings

This menu allows you to turn help messages on or off.

Setting	Meaning
On	Display help messages on the home player. These are displayed when you do not operate the controls of the player for a period of time.
Off	Turn off any help messages.

About

Selecting this will display information about the PhatNoise Home Digital Media Player software version and acknowledgements.

2.9 Future Features

The home player remote control has commands that will be enabled in future software releases:

Numbers 0 - 9
Repeat
Enter
DMS
Search
Favorites
PC
Features

These buttons currently have no function.

In addition, the USB port on the back of the home player is presently disabled. Future software updates will include support for this port.

Section 3

Using the TV Display

This section presents all the things you can do with the PhatNoise Home Digital Media Player using your TV's display and the remote control. If you'd like to use the home player without a TV, or if you would like to use the front panel buttons instead, please see the section *Using the Front Panel Display* on page 13.

3.1 Setting up for use with a TV

What you'll need:

1. **An audio amplifier or powered speakers.** You can connect the home player to standard home audio equipment just like a CD player. You can also use powered computer speakers as a small bedroom alternative to a large home stereo.

The home player features both analog and digital audio outputs. If your stereo equipment has a standard S/PDIF coaxial input jack, connect this to the S/PDIF output of the home player for the best audio fidelity.

2. **A wall outlet.** The home player's power adapter plugs into any standard wall power outlet.
3. **A TV.** A TV with an S-Video input will operate best, as the S-Video signal will look much better than the composite output.

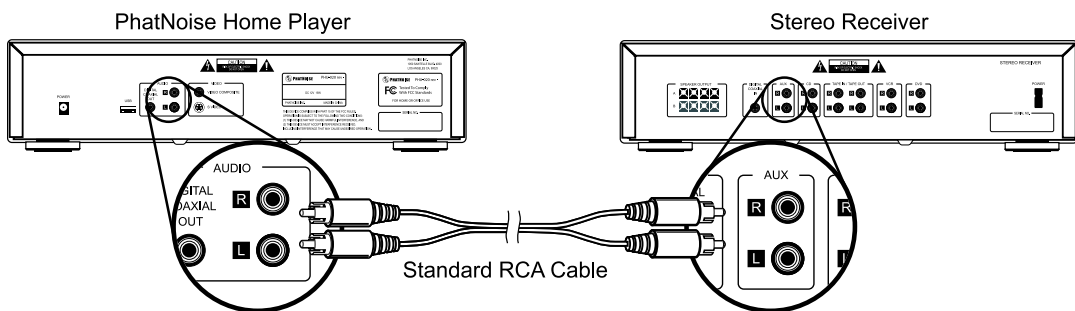
Step by step:

1. **Position the home player.** Place the home player unit wherever may be convenient for you, avoiding direct sunlight or high moisture locations.

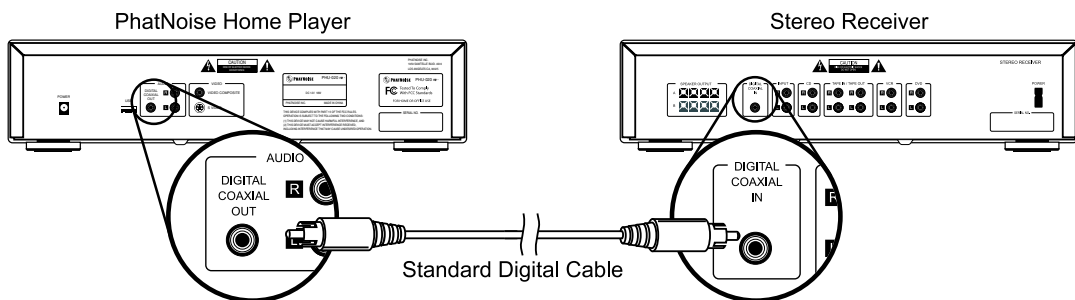


Tip: You may want to avoid placing the home player on a slippery surface – the unit may move when you insert or remove the DMS cartridge.

2. **Connect the analog or digital audio jacks.** For an analog audio connection, connect the Left and Right RCA jacks to a suitable audio input of your home stereo. Common audio inputs that work well may be labelled 'CD' or 'AUX'. You can alternatively connect the analog outputs to a set of powered computer speakers by using an RCA to headphone-style adapter (not included).

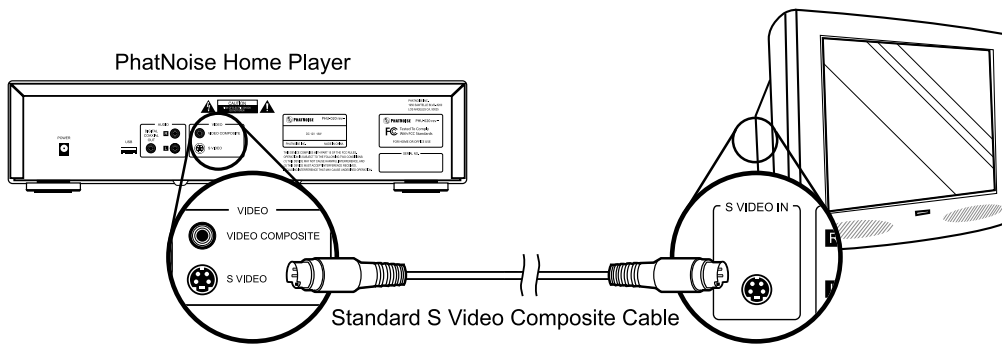


If you are using digital audio, use a single cable from the home player's S/PDIF output jack to the coaxial digital input of your home stereo.

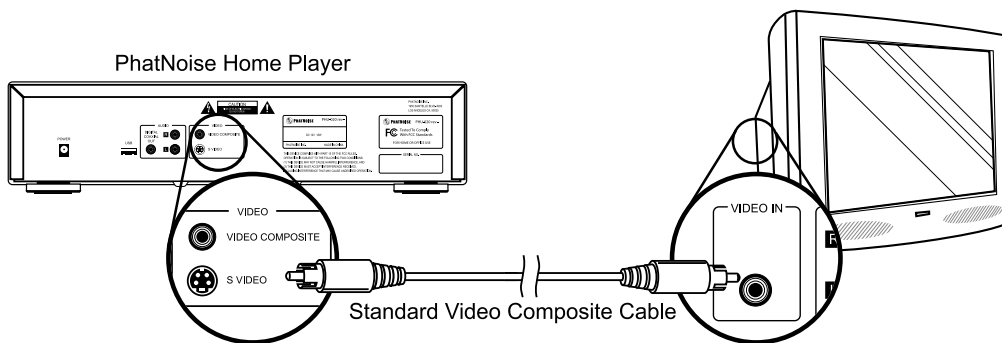


3. **Connect the Video.** If your TV has S-Video inputs, connect the S-Video cable (included) from

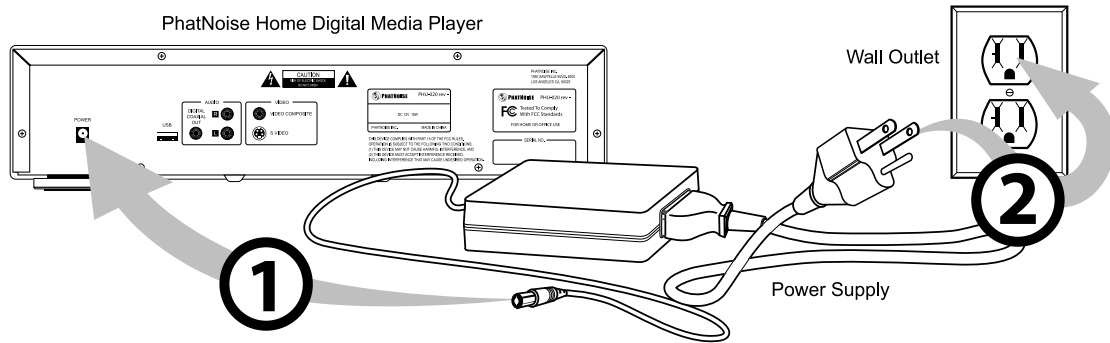
the S-Video output of the home player, and to the S-Video input of your TV or video system.



If your TV does not feature S-Video, connect the composite video cable (included) from the composite video output of the home player, and to the composite video input of your TV or video system.



- 4. Connect the power supply.** Insert the small power supply plug into the power input jack of the home player, then plug the power cord into your wall outlet.



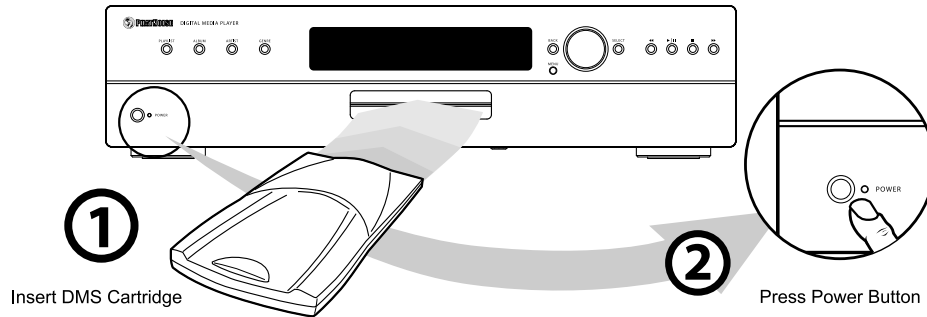
5. The home player will initialize for a few moments as soon as it is plugged in. The controls will not operate while the system is initializing.

Initializing

6. When the system is done initializing, all the lights and the LCD display will turn off.

3.2 Turning on the system

1. To begin, insert your DMS cartridge, and press the power button. The display will illuminate, and the power indicator will turn on.



When the home player turns on, you will see a set of different colored lights. This is what the colors mean:



- *Red: The home player is doing a self check of hardware.*
- *Amber: The home player is loading its system software.*
- *Green: The home player is up and running.*

3.3 Setting up the Graphical Interface Software

Before the PhatNoise Home Digital Media Player can display any video screens on your TV, the DMS cartridge must have the Graphical Interface software installed.

To do this, run the PhatNoise Music Manager and download a new Plug-In for your DMS cartridge named 'hugui'. This will copy the necessary software onto your DMS for the graphical display to appear.



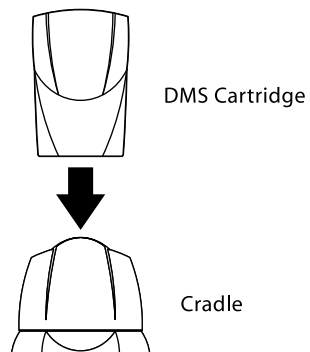
Tip: If the DMS cartridge you are using shipped with your home player, you can skip this section – the Graphical Interface software is already installed.

Step-by-step

1. Run the PhatNoise Music Manager.

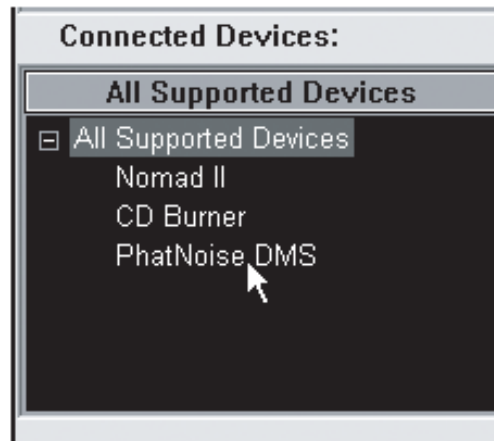


2. Insert a DMS cartridge into the USB cradle.





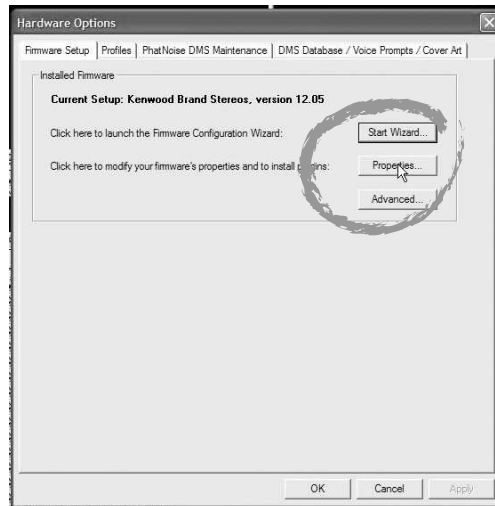
3. Display the Device view by clicking the "Device" button.



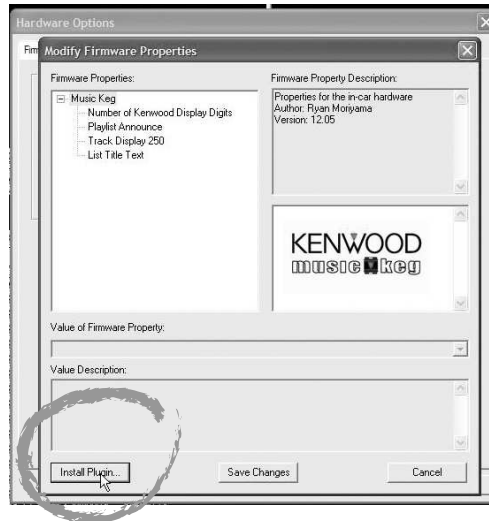
4. Activate the PhatNoise DMS cartridge by clicking PhatNoise DMS in the *All Supported Devices* panel.



5. Click on the *Hardware Options* button.



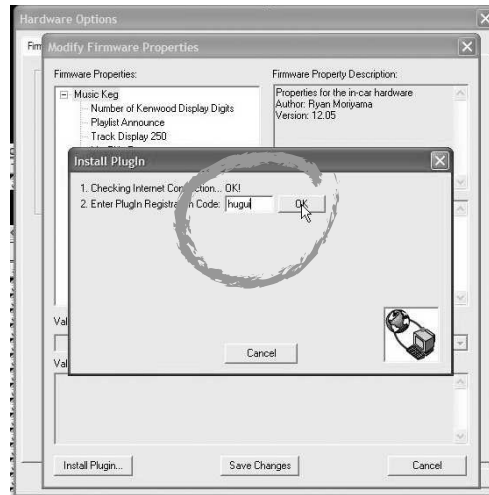
6. Click on *Properties*.



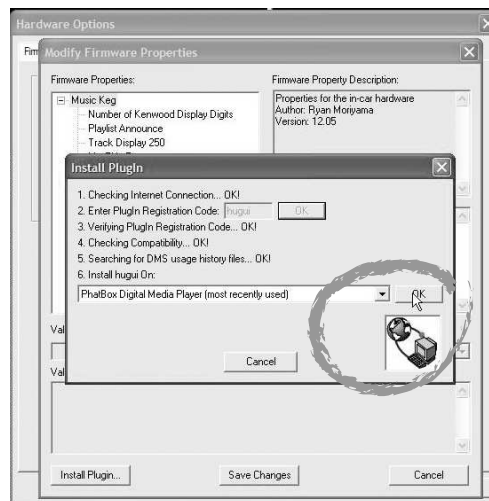
7. Click on *Install Plugin*.



The window you see may not have these options listed. These options are for Kenwood-compatible systems, and may not be present for other systems. Just proceed with the rest of these steps.

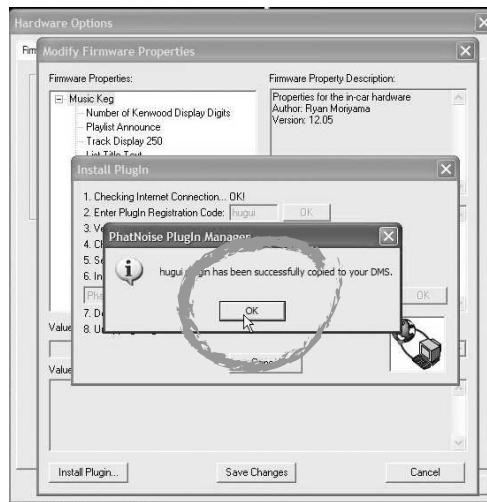


8. In the registration code box, type "hugui" (without quotes), and click *Ok*.

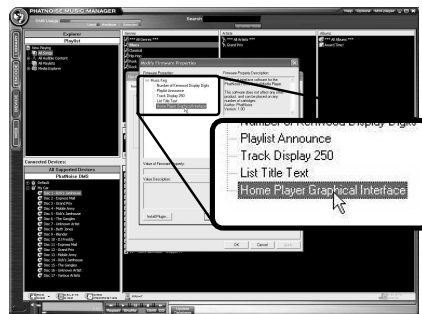


9. The drop down box will list each of the PhatNoise products the DMS cartridge has been used in.

You can select any one of these and click *Ok*.



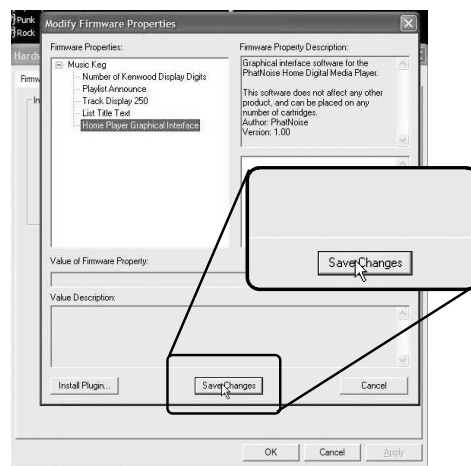
10. Wait for the Graphical Interface software to download – *the software is approximately 10 MB in size, and may take some time to download. Once done, click Ok.*



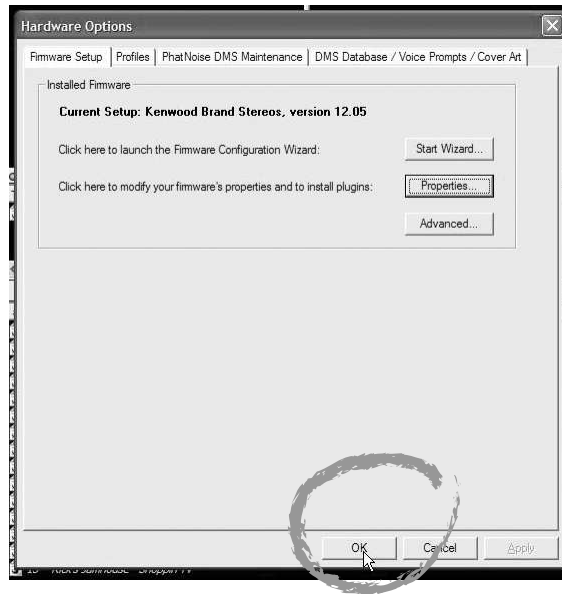
11. Choose the item "Home Player Graphical Interface" – you should see a display similar to the one above.



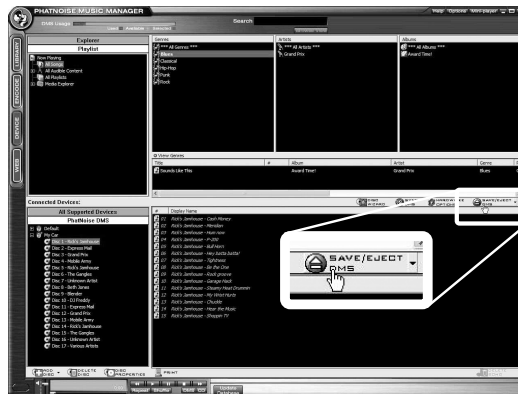
If your window does not display like this, go ahead and click Cancel. The software has still been downloaded and installed correctly.



12. Click on *Save Changes*.



13. Click on *Ok*.



14. Finally, click on *Save/Eject* to before removing the cartridge from your cradle.

Your DMS cartridge is now ready for use in the home player. Again, this step is only needed for the TV display to operate – the front panel and music playback work with any DMS cartridge as-is.

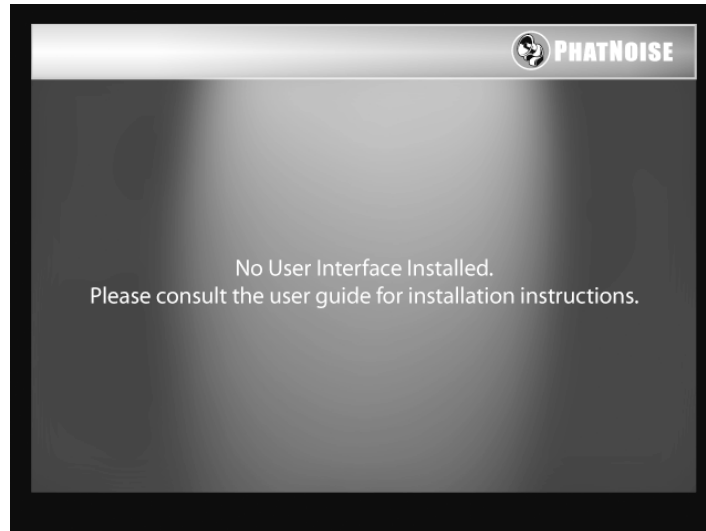
3.4 Setting the Video Mode

Before using the TV display, ensure that the home player is set to the correct video mode.

1. Press the *Menu* button.
2. Press the *up* and *down* buttons, or turn the knob until the front panel displays *Settings*.
3. Press *select* to enter the *Settings* menu.
4. Press the *up* and *down* buttons until the front panel displays *Video Settings*. Press *select* to enter the *Video Settings* menu.
5. Choose either *Composite* or *S-Video* modes, depending on the connection type you made above. Press *select* to enable the mode.
6. Press *Menu* to exit.

If you don't see a video display, please check the following:

- The Graphical Interface software takes about 20 seconds to load after the unit's front display has turned on. You may need to wait a bit longer.
- Ensure the video mode you chose matches the video cable connection.
- Ensure your TV is set to the proper video input.
- If the display is properly set, but you have not loaded the Graphical Interface software, you will see the following display:

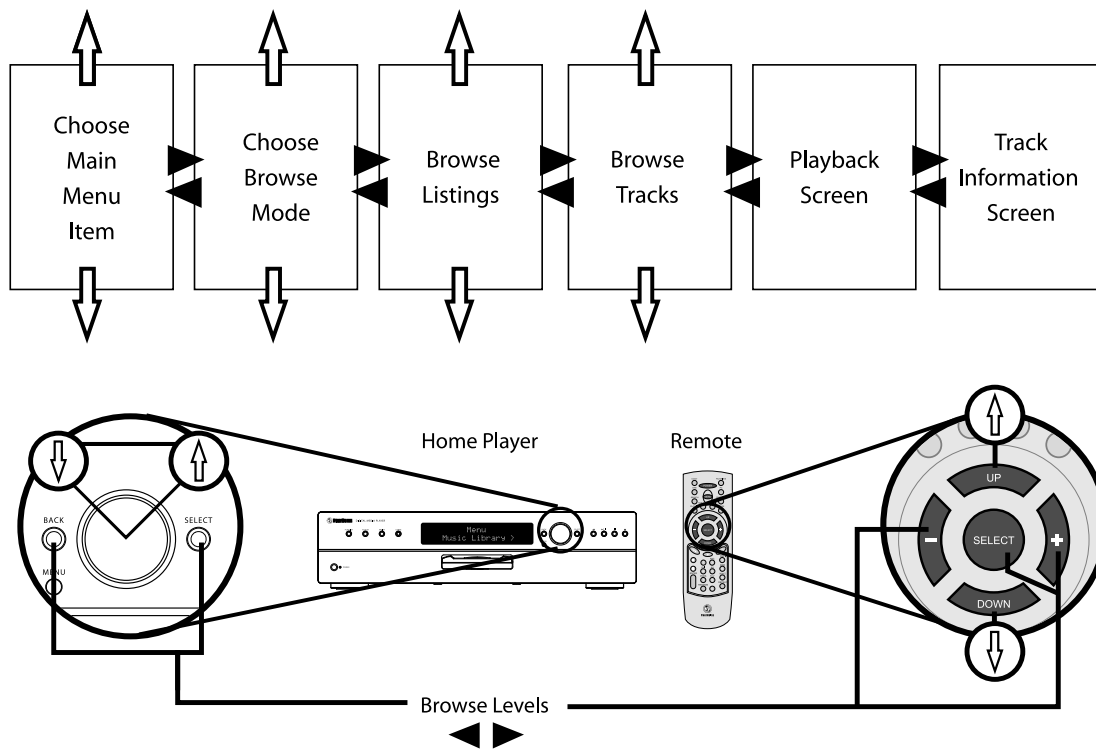


Please see *Setting up the Graphical Interface Software* on page 33.

3.5 How the Home Player is Organized

The PhatNoise Home Digital Media player is organized for fast and easy access to the most common features. Most of the navigation is done by a small set of controls, with the remaining controls used as shortcuts.

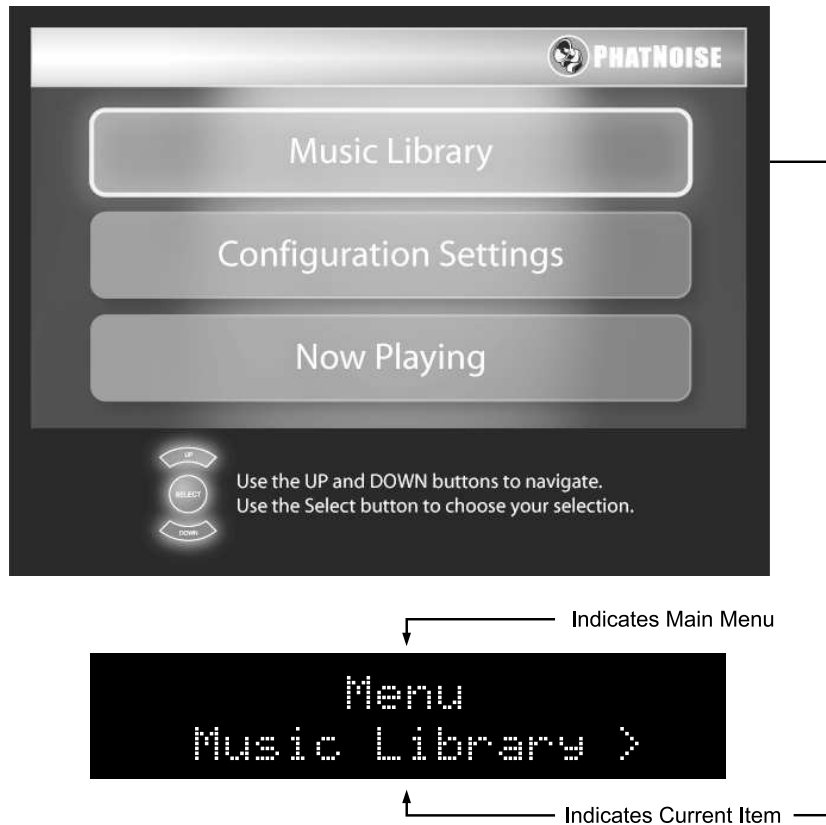
- **From the remote control** The *up* and *down* buttons browse through the items available. The *select* button chooses an item and moves down to the next screen. The *up* button goes to the previous screen. (*Note: the down and select buttons currently perform the same function*)
- **From the front panel** The knob allows you to browse through the items available. The *select* button chooses an item and moves to the next screen. The *back* button goes to the previous screen.



This section will focus primarily on using the remote control. If you would like to use the front panel controls, more detailed explanations can be found in the section *Using the Front Panel Display* on page 13.

3.6 Browsing the Main Menu

The first screen to appear is the main menu:



Pressing the *up* or *down* buttons on the remote, or turning the knob on the front panel will change the current item. Pressing the *select* button will choose the item displayed.

This menu has the following default menu items:

- **Music Library.** Selecting this item will show different ways of browsing the music library in your system.
- **Settings.** The settings menu is explained in detail in section *Settings Menu* below on page 57.

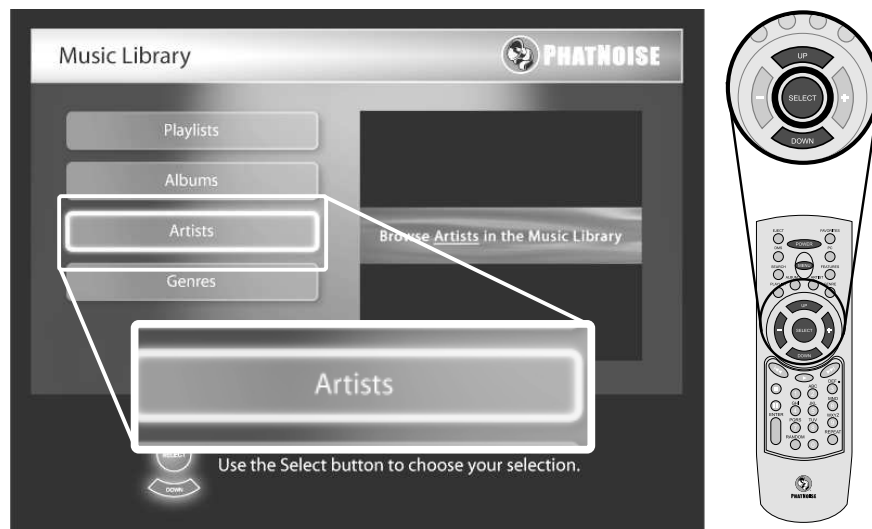
- **Now Playing.** If a song is currently playing, this item will take you right to it.

3.7 Choosing music to play from the Main Menu

1. From the main menu, scroll to the first item, *Music Library*, and press select.
2. Next, choose how you would like to browse your music library. The home player features four browse modes for your music:

Mode	Meaning
Playlists	Display all the playlists available in your system. These playlists are made with the PhatNoise Music Manager.
Albums	Display all the albums available in your system. The albums are sorted first by artist, then alphabetically by album name.
Artists	Display all the artists available in your system, sorted alphabetically.
Genres	Display all the genres available in your system, sorted alphabetically.

Press the *up* and *down* buttons on the remote to display each of the browse modes listed above.



3. Make your selection by pressing the *select* button. The home player will display a list of items matching the browse mode you chose. In the image below, for example, a list of artists is displayed alphabetically.



Tip: Press and hold the up or down buttons to scroll quickly through the list!

4. Press *play* to immediately begin playing, or
5. Press *select* instead. The system will show you the tracks from the Playlist, Album, Artist, or Genre that you selected. Press *select* one last time when the track you would like to play is displayed on the screen.



3.8 Navigating the Playback screen

The playback screen is what you see when a song is playing. Here's how it is laid out:



- **Current Song.** The currently playing song is shown highlighted in the list of songs.
- **List Name.** This is on the top of the screen, and shows what type of song listing you have (for example, "Now Playing Blender" will be displayed when you are playing all the songs by the artist *Blender*).
- **Album Art.** The album cover for the song currently playing is shown on the right side of the display.
- **Song Information.** If information is known about the song, it is displayed below the album art.
- **Play Light.** This light is behind the play button on the front panel. This light glows when a song is playing, blinks when a song is paused, and turns off if no song is playing.

Here is a summary of the most common controls:

Button	Meaning
▶ /	Play: begin playing the item shown on the display
	Pause: press the play button again on the front panel, or press pause on the remote to pause the current playback
▶▶	Track forward: Go forward one track
◀◀	Track backward: Go backward one track
■	Stop: stops the playback
▶▶▶	Seek forward: Press and hold the ▶▶ button to seek forward in the current track
◀◀◀	Seek backward: Press and hold the ◀◀ button to seek backward in the current track

Browsing while playing

While you are playing a track you can browse the songs that may be coming up in the queue.

1. Press the *up* or *down* buttons, or turn the scroll knob. The display will show the other tracks available.
2. If you see a track you wish to play, press *play* or *select* to switch to that track.
3. If you don't want to make a selection, simply wait a few moments for the screen to go back to the song currently playing.

Additional Song information

Press *select* while in the playback screen to see additional information about the current song. After a period of time the display will return to the playback screen, or you can press - to go back at any time.



The *Menu* and *Play* buttons

- *Menu* button: Press this to go directly to the main menu.
- *Play* button: Press the play button at any time to begin playback of the current selected set of songs. If no songs are selected, the home player will begin playing all the songs available.

Turning off the home player

Press either the *Power* or *Eject* buttons to turn the home player off. The home player will briefly save the current settings to the DMS cartridge, then turn itself off when done. Press the *power* button again to turn the home player on. When you turn the home player back on, it will resume where it left off.

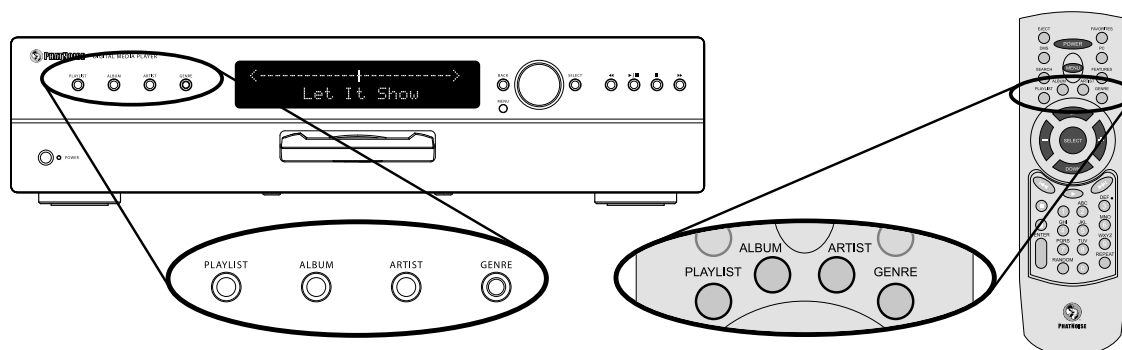


Tip: Make sure to turn off the home player before pulling out the cartridge! Otherwise, you may risk corrupting the contents of the DMS!

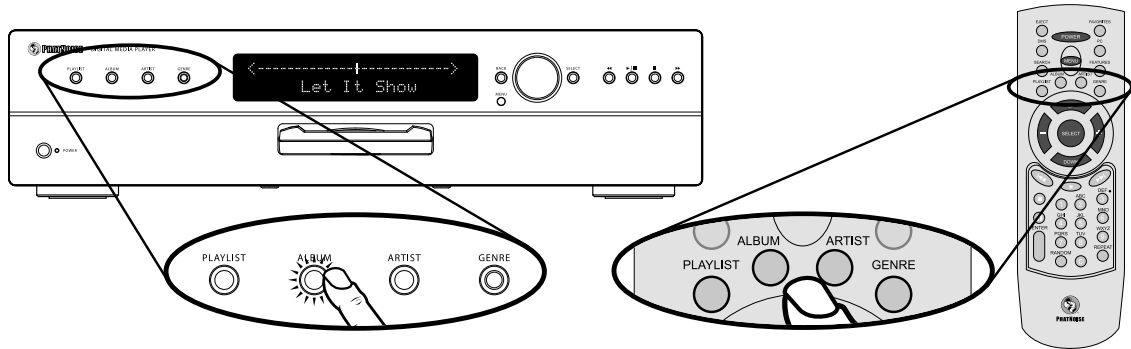
3.9 Playing music using SSA

The PhatNoise Home Digital Media Player features the SSA music organization feature, that not only makes browsing and playing music easier, but also gives you many more options for finding what you want. This section describes how to browse and play music using SSA.

1. On both the front panel and the remote control you will find four buttons, labelled *Playlist*, *Album*, *Artist*, and *Genre*.



2. You can press one of these buttons at any time to display a list of content for that button. It is like a shortcut to the four browse modes mentioned above. Furthermore, when you press one of these buttons, the corresponding light will glow, indicating the selected browse style.



3. Press *play* to immediately begin playing, or
4. Press *select* instead. The system will show you the tracks from the Playlist, Album, Artist, or Genre that you selected. Press *select* one last time when the track you would like to play is displayed on the screen.

More from this Playlist, Album, Artist, or Genre

Whenever a song is shown playing on the display, you can press any of the buttons *Playlist*, *Album*, *Artist*, or *Genre* that are not lit to hear more songs that match that category. After a few moments and the player will return to the song playback screen. The current song will not be interrupted, but the songs coming up will be changed accordingly.

Example:

Every song has Playlist, Album, Artist, and Genre categories (these are called music tags). For example, "Love my way" by *Beth Jones* has the following tag information:

Playlist	Album	Artist	Genre
My Music	The Best of Beth Jones	Beth Jones	Rock

1. Let's say we are listening to "Love my way", and the Artist button is lit. This means we are listening to all of *Beth Jones*' songs.
2. If we press the *Album* button just once, the system will change the queue of songs to just those that are from the current album "The Best of Beth Jones". Wait a few moments for the player to return to the song playback screen.

Browsing categories within categories

Press and hold any of the *Playlist*, *Album*, *Artist*, or *Genre* buttons that are not lit. The home player will only display the items that match both the existing selection **and** the button you just pressed.

Example:

1. Let's say we are listening to all songs whose Genre is *rock* (we know we are browsing by *Genre* since the *Genre* button is lit).
2. Press and hold the *Artist* button. Instead of showing all the artists available, the system will display all artists that have *rock* songs available (this is indicated by both the *Artist* and *Genre* lights illuminated).
3. On our DMS cartridge we have only *rock* songs by the artists Blender and Beth Jones. Use the + and - buttons to choose one of these two artists, or
4. do nothing and you are back to listening to all *rock* songs.



Currently the Home Player is limited to two browse modes lit at the same time. Three or more may cause unpredictable behavior.

3.10 Settings Menu

The settings menu currently consists of the following items:

- Random Settings
- Repeat Settings
- Video Settings
- Help Settings

You can get to the settings menu from the main menu. Use the *up* or *down* buttons, or turn the knob to browse through each of the items. Press the *select* button to choose the selected item, press the - or *back* buttons to leave the menu.

Each of the settings are explained below.

Random Settings

This menu allows you to turn the random function on or off. This menu is equivalent to pressing the random button on the remote control to toggle the random mode on or off.

Setting	Meaning
Random Off	Turn off the random mode, and play songs in a normal, sequential order.
Randomize List	Randomize the list of songs currently playing. For example, if one album is selected to play, the order of the songs within that album would be randomized.

Repeat Settings

This menu allows you to configure how the repeat function operates. This menu is equivalent to pressing the repeat button on the remote control multiple times, switching between the three modes listed below:

Setting	Meaning
Repeat Off	Turn off the repeat mode, and play songs in a normal, sequential order.
Repeat Track	Repeat the current song. When the currently playing song ends, the same song will start over.
Repeat List	Repeat the entire list of songs currently playing. For example, if an album is selected to play, the album playback will start over when the last song of the album is finished.

Video Settings

This menu allows you to change the video mode of the TV display.

Setting	Meaning
Composite Video	Switch the video output to the composite video mode.
S-Video	Switch the video output to the 'Super VHS' video mode.

Help Settings

This menu allows you to turn help messages on or off.

Setting	Meaning
On	Display help messages on the home player. These are displayed when you do not operate the controls of the player for a period of time.
Off	Turn off any help messages.

About

Selecting this will display information about the PhatNoise Home Digital Media Player software version and acknowledgements.

3.11 Future commands

The home player remote control has commands that will be enabled in future software releases:

Numbers 0 - 9
Repeat
Enter
DMS
Search
Favorites
PC
Features

These buttons currently have no function.

In addition, the USB port on the back of the home player is presently disabled. Future software updates will include support for this port.

Section 4

Music Management

If you already have PhatNoise Music Manager software installed on your computer, please install the version on the CD included with your Home Player.

4.1 Installing the PhatNoise Music Manager software



Tip: You must install the PhatNoise Music Manager software on your computer before you connect the USB cradle to your computer.



Tip: The PhatNoise Music Manager requires the Windows Operating System (Windows 98 Second Edition, Windows Millennium, Windows 2000, or Windows XP).

To configure the software properly, it is very important to follow these steps in order:

1. Exit all running Windows programs.
2. If the DMS Cartridge is inserted into the USB cradle, remove it now.

3. Insert the PhatNoise Music Manager software CD into your computer's CD-ROM drive. The PhatNoise Music Manager software installation program will launch automatically launch in a few moments.
4. If the PhatNoise Music Manager software installation program does not launch automatically, follow these steps to run the software manually:
 - (a) Click the "Start" button in the lower left corner of your screen and select "Run...". The Run dialog box appears.
 - (b) Type the following text in the drop-down list box:

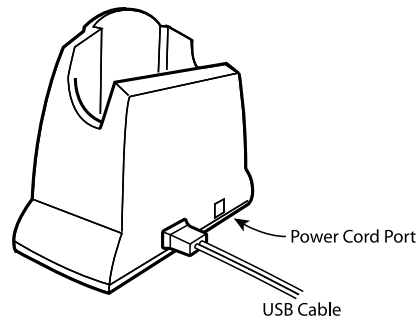
`d:\PMM_setup.exe`

where "d:" is the letter corresponding to your CD-ROM drive.
 - (c) Click OK.
5. Follow the on-screen instructions to install the PhatNoise Music Manager software (the PhatNoise CD Manager software will also be installed at this time).
6. When the installation is finished, the installation program will ask you to restart the computer. After restarting your computer you will find two new icons on your desktop: one for PhatNoise Music Manager and one for PhatNoise CD Manager.

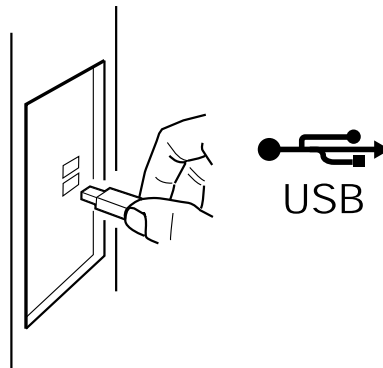
4.2 Installing the USB Cradle and DMS Cartridge



Tip: You must install the PhatNoise Music Manager software on your computer before you connect the USB cradle to your computer.



1. Once you have installed PhatNoise Music Manager and have restarted your computer, plug the power connector into the USB cradle. Make sure the other end of the power cable is plugged into a wall outlet before connecting the USB cradle to your computer.



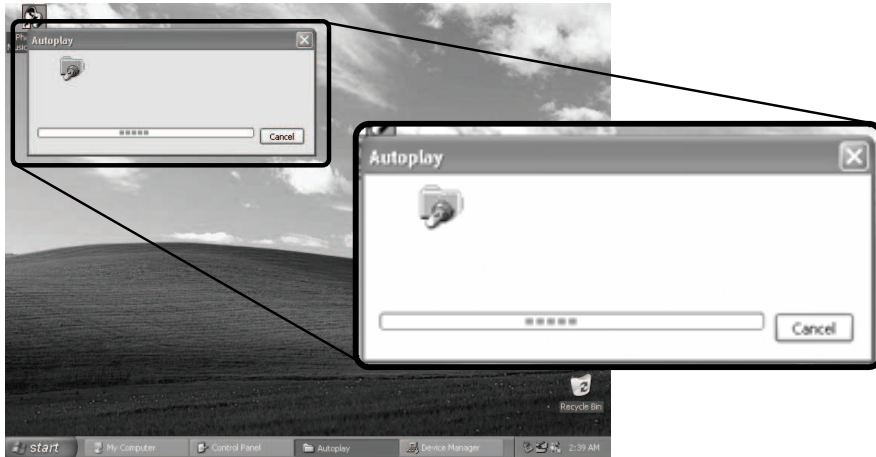
2. Connect the USB cradle's USB cable to a USB port on your computer.



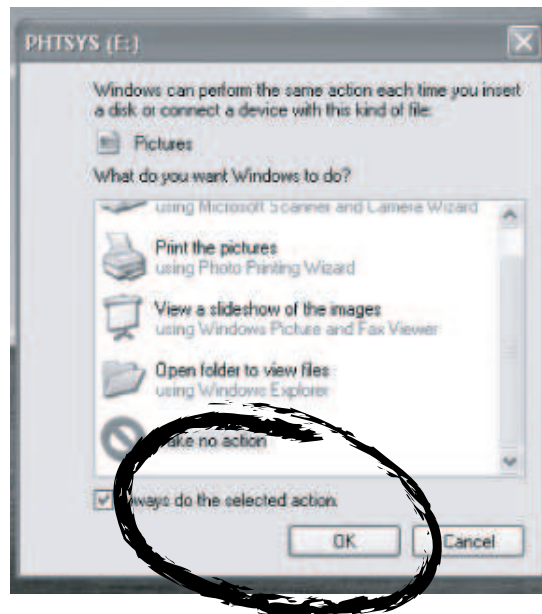
3. Insert the DMS cartridge firmly into the USB cradle. Avoid 'slapping' the cartridge into place. The green and red indicator lights should illuminate. The DMS cartridge will then be detected by the operating system. (If your computer does not support USB 2.0, Windows may display a message indicating that you have plugged the cradle into a "non-HI-SPEED USB Hub". The cradle will still function properly. To take advantage of the faster transfer speed of USB 2.0, you will need to purchase a USB 2.0 adapter card.)



Tip: If you have USB 2.0 ports installed on your machine, but the cradle is plugged into a USB 1.0 port, Windows XP will display the message below. To take advantage of the faster transfer speed plug the cradle into a USB 2.0 port.



4. After an initialization period, an "Autoplay" dialog box will appear.
5. Let the Autoplay feature finish.



6. Next, dialog boxes will appear for two new drives, labelled PHTDTA and PHTSYS.
7. For each dialog box, select "Take No Action" and check "Always do the selected Action", then Click "OK".
8. Your USB Cradle has been successfully installed and your DMS cartridge is ready for use!

4.3 PhatNoise CD Manager

The quickest and easiest way to transfer your CD collection to a DMS cartridge is with the PhatNoise CD Manager. You can also use the PhatNoise Music Manager to encode CDs and transfer music files to a DMS cartridge.

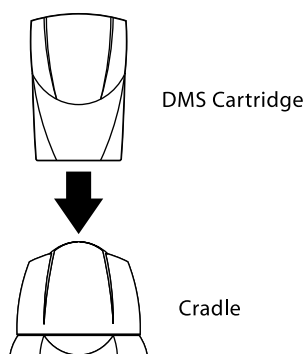
This section introduces the core features of the PhatNoise CD Manager software. *To learn about other features of the software, click on the "Help" button (or press F1) while in PhatNoise CD Manager.*

To transfer your CD music collection to a DMS cartridge

1. Double click on the PhatNoise CD Manager icon on your computer's desktop.



2. Insert a DMS cartridge into the USB cradle. PhatNoise CD Manager will detect the DMS cartridge and after reading its contents will display any music files in the right hand window pane.

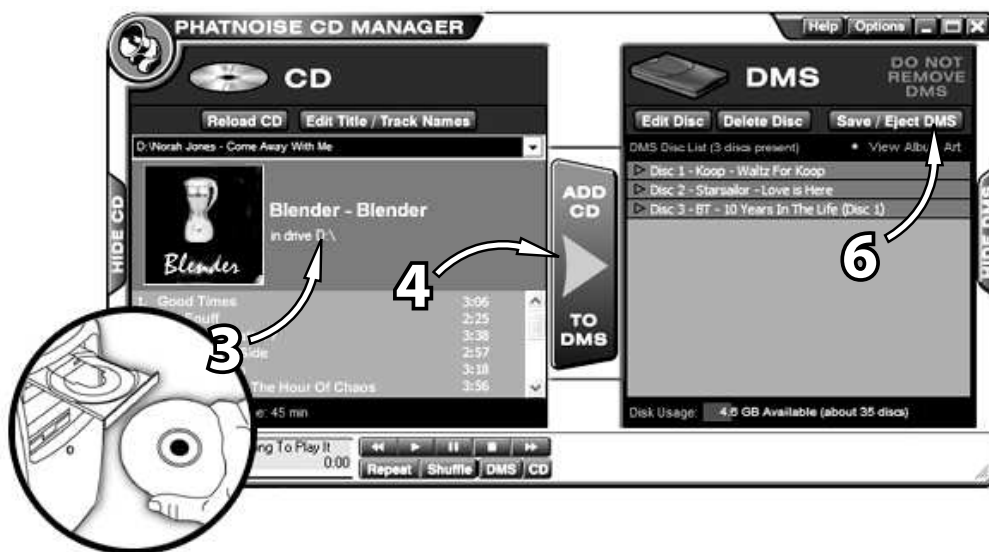


3. Place an audio CD in your computer's CD-ROM drive. PhatNoise CD Manager will automatically detect and load the CD and display its contents in the left hand window pane (If you are connected to the internet this will include Album Art, Artist Name, Album Name and a listing of the music tracks).
4. To transfer all the music files and album art to the DMS cartridge click on the large button in the middle of the window (labelled "ADD CD TO DMS").
5. The CD will automatically eject when the transfer is complete. Insert another CD to continue transferring your music collection. You can use other applications while PhatNoise CD Manager is transferring files to a DMS cartridge.
6. When you are done adding CDs, and you'd like to remove the DMS cartridge, press the Save/Eject Button.



Tip: You must Save/Eject your DMS before removing it from the cradle.

7. Insert the DMS cartridge into your Home Player and enjoy your entire music collection!



PhatNoise CD Manager will store about 300 to 400 CDs on one 20GB DMS cartridge at its default setting of "Good" quality. (Specifically, music is encoded at 128kbps in mp3 format.) To store music at "Very Good" (256 kbps mp3) or "CD-Exact" (703 kbps FLAC format) quality level, select one of these options in the "Options" window under the "CD Options" tab. *Click on the "Help" button (or press F1) while in PhatNoise CD Manager, to learn more about this and other advanced features.*

4.4 PhatNoise Music Manager

This section introduces the core features of the PhatNoise Music Manager software:

1. Creating MP3 files from an Audio CD
2. Organizing music files and playlists
3. Transferring MP3s and playlists to the DMS cartridge

Launching the Music Manager and Loading Music Files

1. Launch the PhatNoise Music Manager software. You can do this one of two ways:
 - Double-click the PhatNoise Music Manager icon on your desktop, or
 - Click "Start", select "Program Files", and select the PhatNoise Music Manager icon.
2. The Music Manager splash screen will briefly appear, then the "Load Songs to Database" window will appear. If you already have music files on your computer's hard drive you can load them now into the Music Manager's database.
3. Choose a folder on your computer (for example "C:\My Music") that contains songs you want to load into the PhatNoise Music Manager database and then click "Load Songs".
4. To load songs from additional folders click on the "Load Songs" button on the main window of Music Manager.

The Four Program Views: Library, Encode, Device and Web

The four icons on the left of the program's main window are used to access the four different parts (views) of the software.



The Library View – Finding Music

To display the library of music you have loaded into the Music Manager click on the "Library" button:



The Library View initially displays "All Songs" in a single list. At any time you can double click on a song title and it will start playing.

The main ways of finding music with the PhatNoise Music Manager are:

1. The Browse View
2. The Media Explorer
3. The Search Box

Browse View: Click the "Browse View" button while in the "Library" (or "Device") View and the window will display a list of all your Artists and a list of all your Albums just above the list of all your songs. To display a list of all your Genres click on "View Genres" (or right click on "All Songs" and choose "Enable Genre Browsing").

- Clicking on a specific Genre, Artist or Album will cause only those songs in that category to be displayed below. The Browse View is hierarchical:
- Clicking on a Genre will display all the Artists, Albums and Songs for that Genre.
- Clicking on an Artist will display all the Albums and Songs for that Artist.
- Clicking on an Album will display all the songs on that Album.

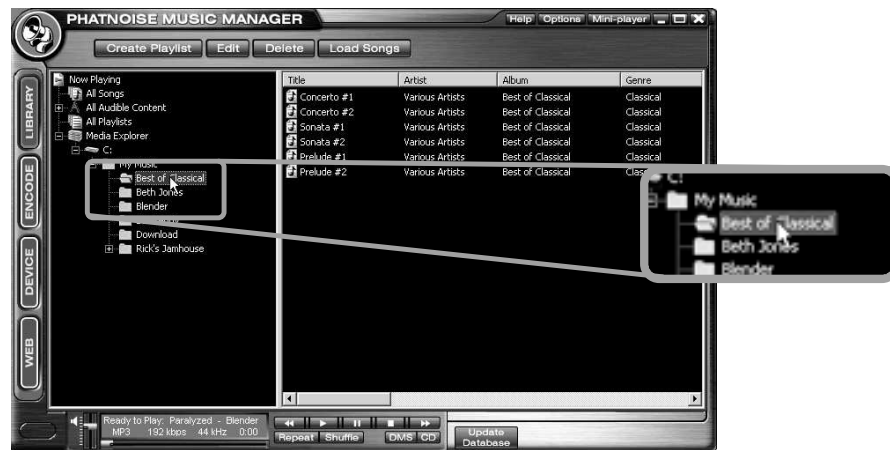
You can select up to 15 items by using holding down the SHIFT key or the CTRL key while clicking.



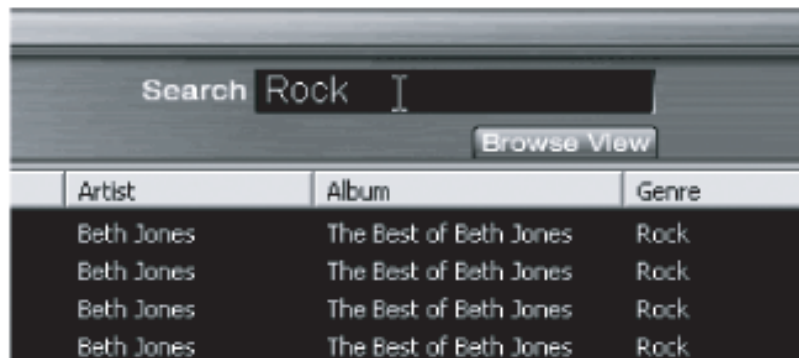
Media Explorer: The Media Explorer lets you view the files in your database as they are laid out in the file system. This is helpful if you who have already organized your music into Windows folders.

To access the **Media Explorer**, click on its icon in the left side window pane of the Library View.. The **Media Explorer** looks and functions just like Windows Explorer.

Note that the first time you click it, there is a slight delay as the software builds the tree of folders dynamically.

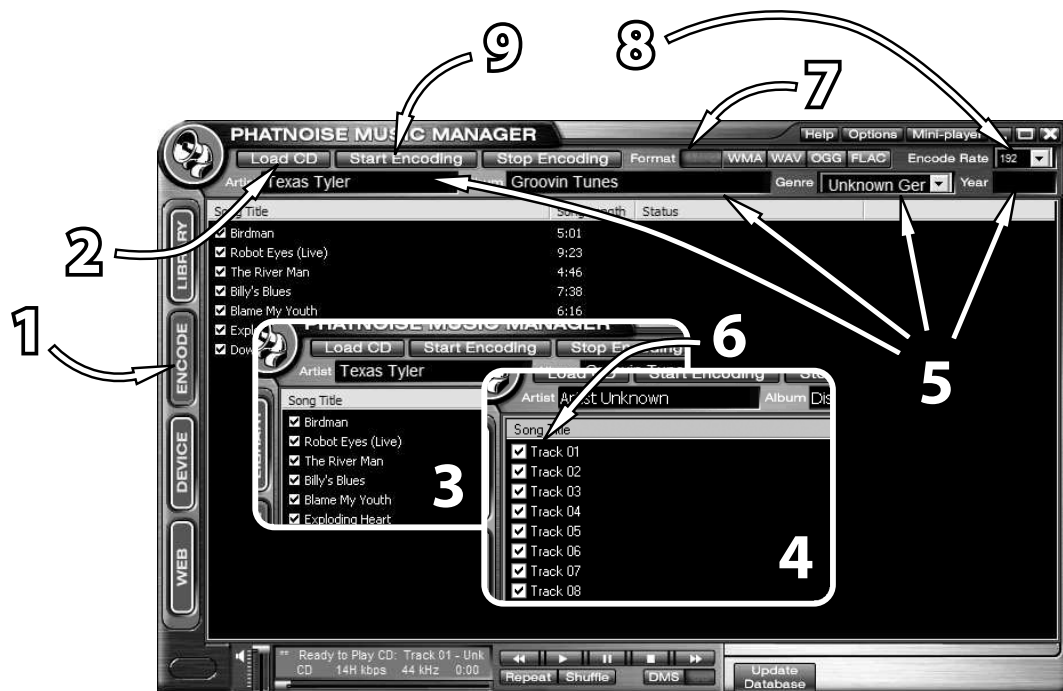


Search Box: Type search terms into the search box and the matching songs will be automatically displayed below as you type. You may search the contents of any playlist, "All Songs", or the results of a browse view search using the search box. The search function displays all songs for which all or part of the artist, album, genre, path, or file name matches the search terms.



The Encode View – Converting an Audio CD to computer files

The CD Encoder View allows you to create computer files from your CDs. The easiest and fastest way to transfer CDs to your DMS cartridge is with PhatNoise CD Manager. The PhatNoise Music Manager CD Encoder View provides much more control over the encoding process including a wider range of encoding formats and data rates.



1. Switch to the CD Encoder View by pressing the "ENCODE" button: [create a single screen shot with circles/numbers indicating the subsection shown in the figures below - remove the individual figures]
2. Insert the CD into the computer. Press the "Load CD" button.
3. If the computer is connected to the Internet, the songs names will appear next to the track number as follows:

4. If you are not connected to the Internet, the tracks will be listed "Track 01", "Track 02", etc.
5. Edit the "Artist", "Title", "Genre", and "Year" information if it is missing or incorrect.
6. Choose the tracks to encode using the checkboxes.
7. Choose the file format to encode in.
8. Choose the bitrate of the file to be created.



Tip: For the MP3 format, 128kbps will provide good sound quality, 256kbps will provide very good sound quality but the music files will be twice as large, 192kbps provides a good combination of sound quality and file size.

9. Press the "Start Encoding" button and encoding will begin. The encoded music files will be saved to your computer's hard drive. See the Device View section for instructions on transferring files to the DMS cartridge.

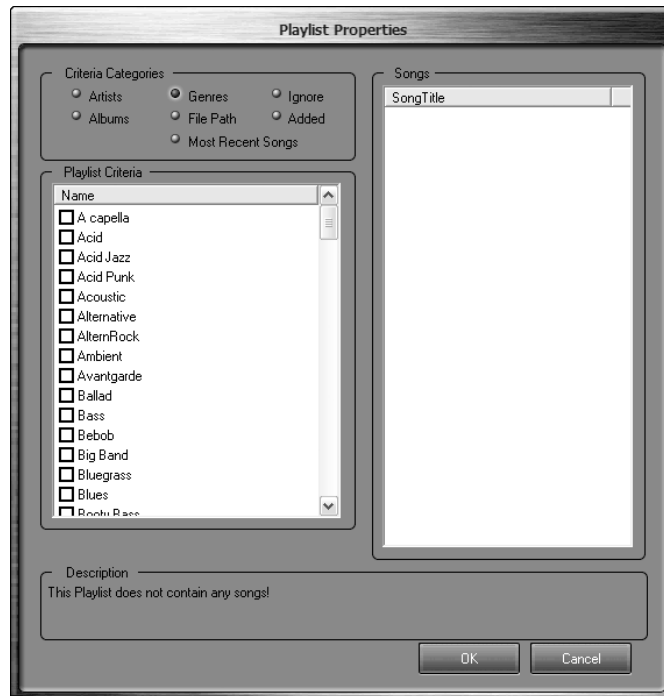
Creating Playlists

A playlist is a collection of songs. It can simply be a collection of songs you choose (static) or a playlist based on criteria (dynamic).

Creating a Dynamic Playlist

Each time you select a Dynamic Playlist in the PhatNoise Music Manager software, the list of criteria in that playlist is checked against the MP3 collection on your computer's hard drive. All songs that match the criteria are automatically added to your dynamic playlist.

1. Click the Create playlist button. Enter a name for this playlist, choose *Dynamic Playlist*, then press *Ok*
2. The playlist properties window will automatically appear.
3. To add criteria to a playlist, select the criteria to add. The criteria category selected will determine what is displayed in the criteria window.



For example, if *Artist* is selected, then a list of all Artists is displayed.

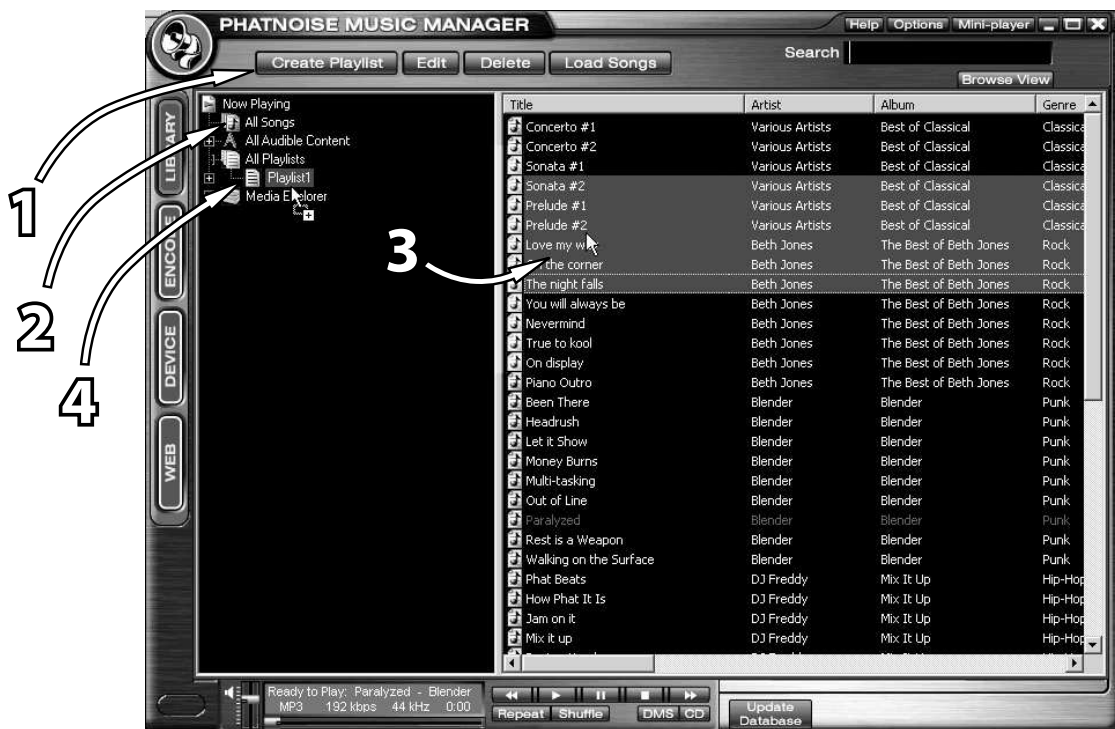
If *File Path* is selected, an input box appears at the bottom of the criteria window. Enter the path and press Add.

If *Most Recent Songs* is selected, then an input box will appear at the bottom of the criteria window. Enter the number of most recent songs to add and press Add.

Creating a Static Playlist and Adding Songs

1. Click the *Create* playlist button. Enter a name for this playlist, choose *Empty Playlist*, then press *Ok*
2. Click on the *All Songs* playlist.
3. Find the songs you wish to include in the playlist, and then highlight the desired songs.

4. Drag the desired songs into your playlist.



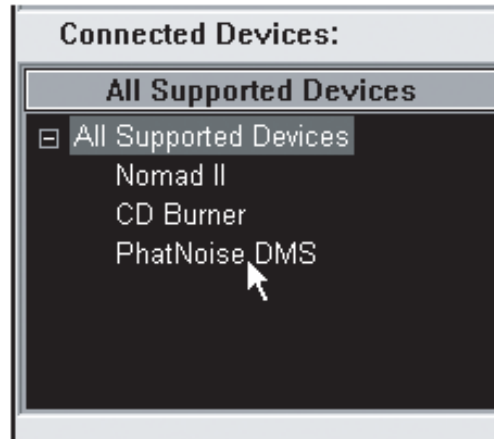
The Device View – Managing the DMS Cartridge

1. Display the Device view by clicking the "Device" button.



The Device view is organized in two parts:

- The PhatNoise Music Manager Playlist and Windows Explorer panels on the top
 - The All Supported Devices panels and the contents panel on the bottom
2. Insert the DMS cartridge into the USB cradle. The LED lights on the cradle will flicker when the cartridge has been properly inserted.
 3. Activate the PhatNoise DMS cartridge by clicking PhatNoise DMS in the All Supported Devices panel. When the DMS cartridge is connected properly, a red GO button appears, click on it to activate your DMS cartridge.



If a blue Reconnect button appears, click on it to activate your DMS cartridge. If the DMS cartridge has not been configured properly, a configuration wizard will launch. For more information, refer to Appendix A: Updating the Firmware.

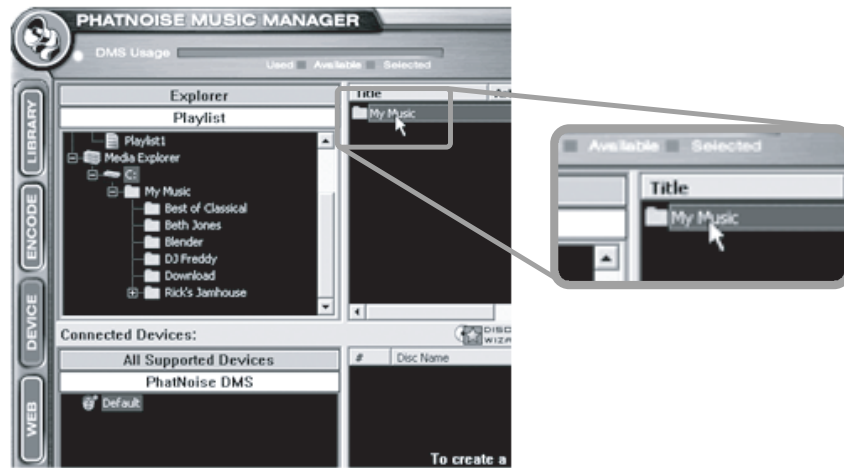
Adding Music to the DMS Cartridge

The DMS cartridge stores all music in "Playlists", also called "Discs" or "Virtual Discs". The Home Player and PhatBox can play these playlists directly, or sort all the music by Album, Artist, or Genre.

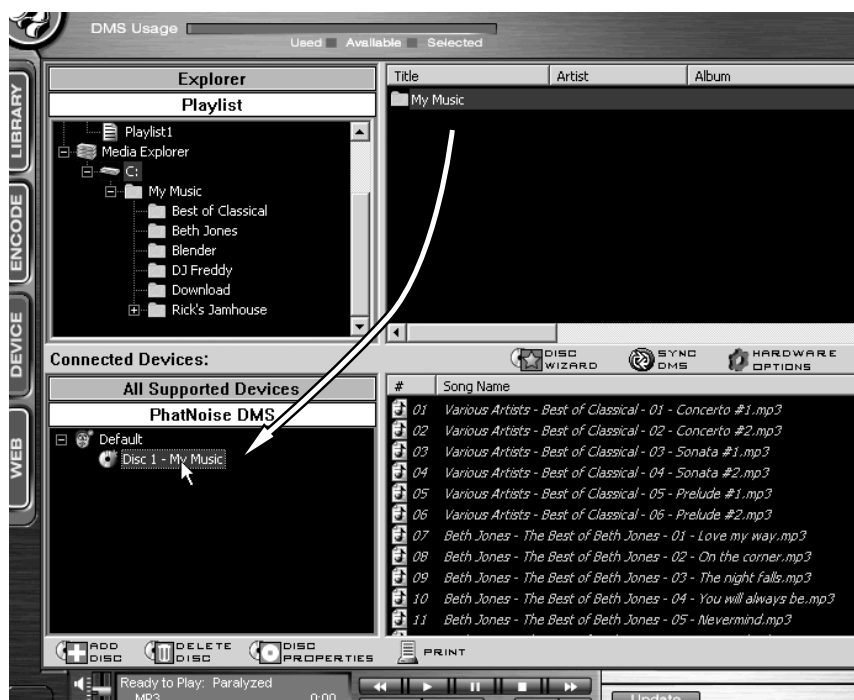
There are different ways of placing content on your DMS cartridge, depending on how you like to organize your music.

CD Based: *If most of your music will come from CDs use PhatNoise CD Manager to encode your music and use the Home Player or PhatBox like a large CD player with browsing capabilities. The Home Player (or PhatBox) automatically organizes your music by Album, Artist and Genre and each CD you encode becomes its own Playlist (a Virtual Disc).*

Alternatively, you can follow these steps using PhatNoise Music Manager to load your music from CDs to the DMS cartridge:



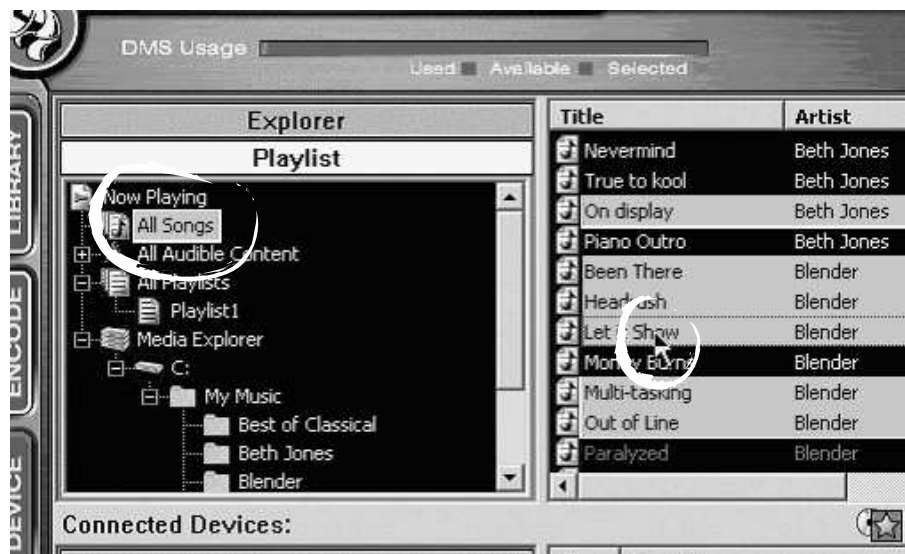
1. Find the base folder where all your encoded CDs are located using the Media Explorer. In the example above, it is under 'My Music.'



2. Drag the Folder onto the bottom left space of the window to create a "virtual" Disc 1. On the bottom right you can see the music contained in this Disc.
3. No music files are actually transferred at this time. See the section *Ejecting the DMS* on page 90 for instructions on copying your music to the DMS cartridge.

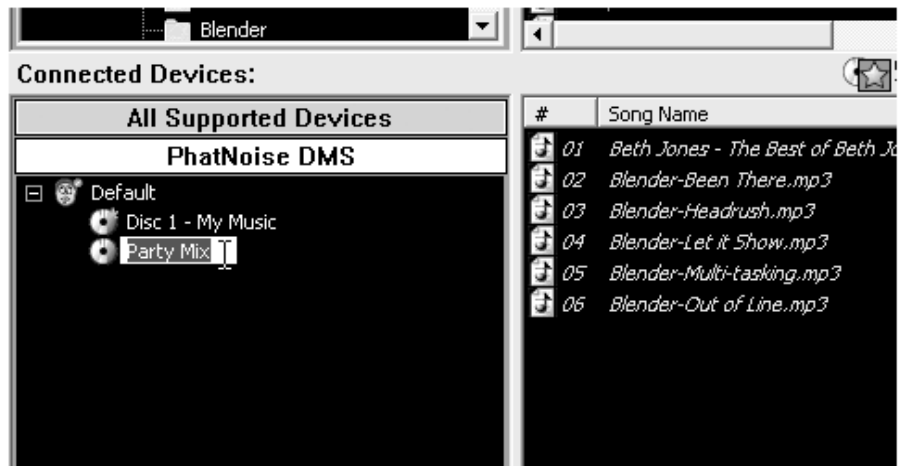
Playlist Based: *If you like to create custom mixes of music, follow these steps:*

1. You can directly drag a playlist you created earlier, listed under *All Playlists*, onto the DMS.
2. Or you can quickly create a static playlist as follows: Select *All Songs*, then choose the songs you would like to place on the DMS.





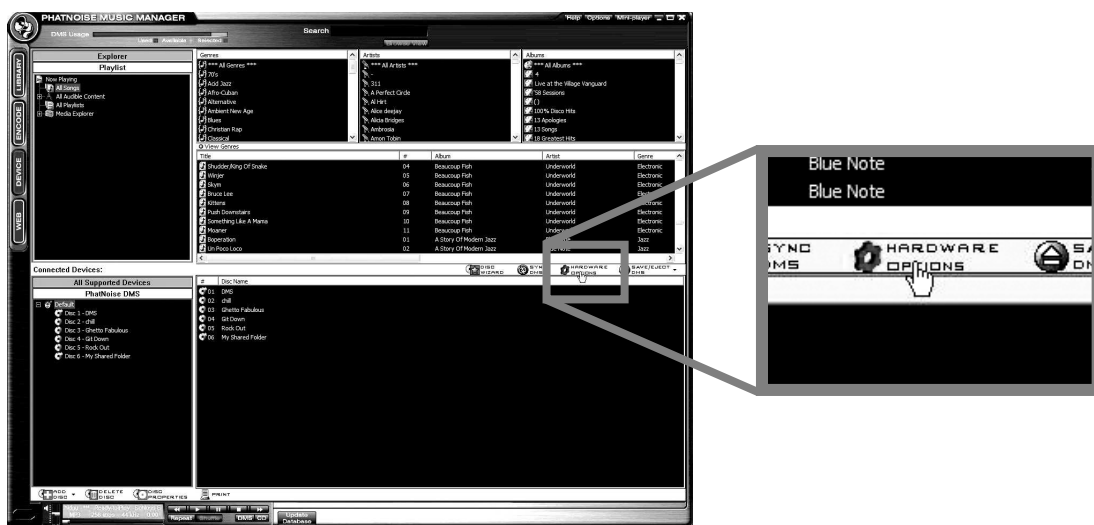
3. Drag the selected songs onto the bottom left space of the window to create a "virtual" Disc (Playlist) of these songs.



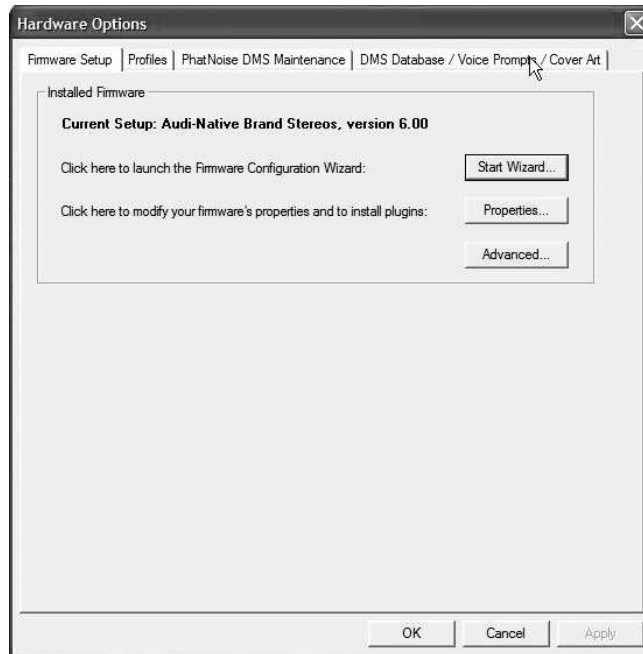
4. Give the Disc a name by selecting the disc twice - when you play this Playlist this disc name will be displayed by your Home Player (or read aloud to you by your PhatBox in the car). These Virtual Discs (with the same names and numbering) are available via the *Playlist* mode on your Home Player or PhatBox.

4.5 Downloading cover art for your music

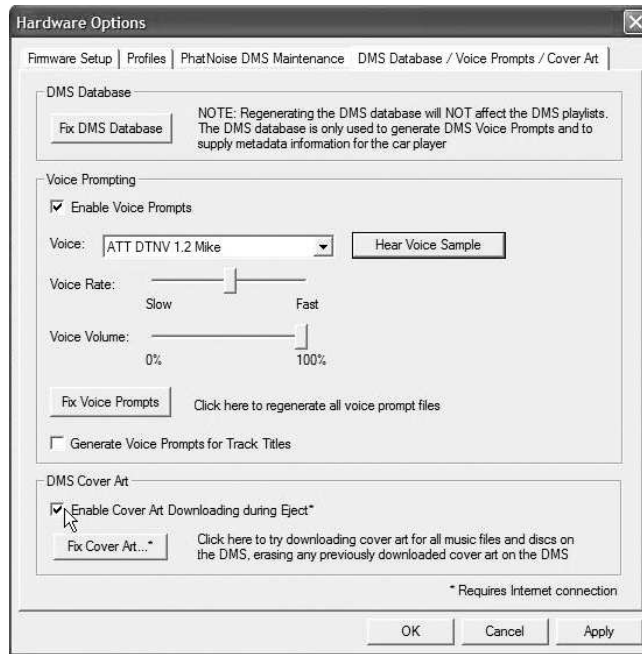
The PhatNoise Music Manager features a utility to automatically search and download cover art images for the songs on your DMS cartridge. The album and artist names from every song will be used for this search, and the resulting downloaded images are stored on your DMS. These images can be viewed from compatible PhatNoise products, such as the PhatNoise Home Digital Media Player. Here's how to turn this feature on:



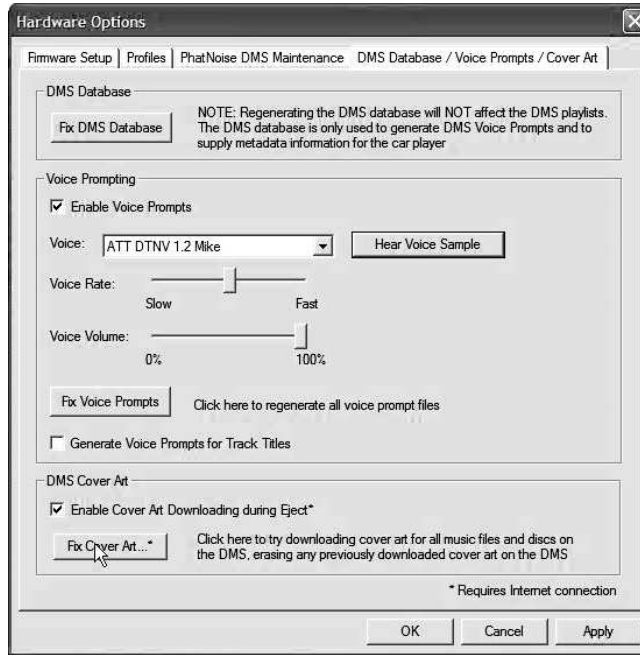
1. In the device view mode, click on the Hardware Options button



2. Click on the *DMS Database / Voice Prompts / Cover Art* tab



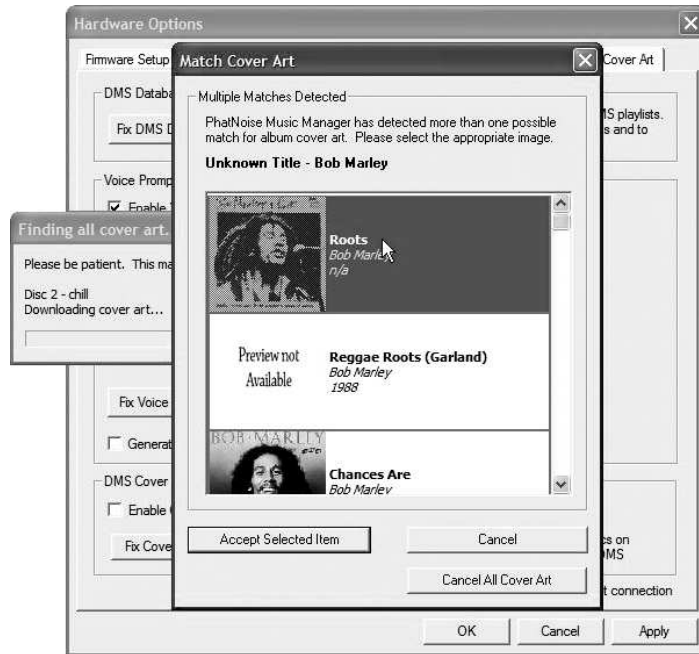
3. If you would like to have the music manager download missing cover art every time you eject the cartridge, check the box titled *Enable Cover Download during Eject*.



4. If you would like the music manager to update your cartridge with cover art now, press the *Fix Cover Art* button.



When the music manager downloads cover art, it may first ask to regenerate the database on your DMS cartridge. This is usually a good idea, but may take a few moments to finish.



5. When generating cover art, the music manager searches an Internet database for the pictures. Sometimes there can be more than one match for the album name. If this is the case, the music manager will prompt you to choose which album best describes the songs you have.

Choose one of the album covers and press *Accept Selected Item*, or press *Cancel* to skip this song. If you would like to cancel the entire operation and not download any more cover art, press *Cancel All Cover Art*.

Ejecting the DMS (Save/Eject DMS)

When you are finished preparing the contents you want to transfer to your DMS, click *Save/Eject DMS*. This step will copy all new songs, databases, and other system files to the cartridge. When done a message will be displayed (and the DMS cartridge drive letters will be removed from Windows) indicating that you can remove the DMS cartridge from the USB cradle.



Tip: Wait until the software displays a message indicating it is safe to remove the DMS cartridge from the USB cradle. Removing the cartridge before this message appears will corrupt the hard drive. Do not remove the DMS cartridge from the USB cradle while the green light is on.



Tip: The Home Player and PhatBox can handle as many as 9999 separate Disc (Playlist) numbers, with up to 9999 songs per Disc number. The total number of songs on the DMS Cartridge must not exceed 30,000

Syncing Dynamic Playlists

The PhatNoise Music Manager has a one-click synchronization feature. This allows you to easily update the Dynamic Playlists on your DMS cartridge with new music you may have stored on your computer's hard drive.



1. In the *Device* view, a **yellow star** next to the Disc icon denotes a **dynamic playlist**. This playlist is set to find songs that match certain criteria. In the example above, the "My Music" Disc reflects all songs that are stored in the folder "My Music":
2. When the *Sync DMS* button is pressed all of the discs with a yellow star will be updated if new matching content is available.

If a disc has fresh content after syncing, the yellow star will turn blue and the new files will be highlighted. Be sure to click *Save/Eject DMS* to save the changes.

4.6 Information on MP3 Files and ID3 Tags

The PhatNoise Music Manager software allows you to organize, play, and create digital music files. These music files come in many different formats, but the most popular is the MP3 format. While this manual usually refers to MP3 files, the same actions apply to any digital music file format.

An MP3 file is a compressed audio file that can be listened to on the computer. An MP3 file is made of two parts, the audio data and the ID3 tag. The audio data uses high quality music compression to make storage and movement of music easy. The ID3 tag enables the PhatNoise Music Manager to organize music files.

The ID3 tag and music data is analogous to a book jacket and the pages inside the book. Whereas the pages contain the book's story, the book's jacket contains the author's name, the book title, and a short summary. An ID3 tag contains information about the Artist, Song Title, Album Title, and Genre, and the rest of the MP3 file is the audio content. MP3 files possessing an incorrect ID3 tag will be improperly filed, much like a book with the wrong book jacket would be misplaced in a library.

Section 5

Support

Need help? What goes where, compatibility, and troubleshooting?

First, check our Frequently Asked Questions:

- <http://www.phatnoise.com/support/faq>

If you can't find the answer to your question there, please feel free to contact us at:

- Web/Email: <http://www.phatnoise.com/support>
- Phone: 310-954-3650

Our call center is available 10:00am to 6:00pm PST Monday through Friday.

Free Manuals Download Website

<http://myh66.com>

<http://usermanuals.us>

<http://www.somanuals.com>

<http://www.4manuals.cc>

<http://www.manual-lib.com>

<http://www.404manual.com>

<http://www.luxmanual.com>

<http://aubethermostatmanual.com>

Golf course search by state

<http://golfingnear.com>

Email search by domain

<http://emailbydomain.com>

Auto manuals search

<http://auto.somanuals.com>

TV manuals search

<http://tv.somanuals.com>