

Guarantee certificate  
Garantiebewijs  
Certificado de garantia  
Garantibevis

Certificat de garantie  
Certificado de garantia  
Εγγύηση  
Garantibevis

Garantieschein  
Certificato di garanzia  
Garanticertifikat  
Takuutodistus

1

year  
an  
Jahr  
jaar  
año  
anno

warranty  
garantie  
Garantie  
garantie  
garantia  
garanzia

χρόνος  
år  
år  
år  
vuosi  
ano

εγγύηση  
garanti  
garanti  
garanti  
takuu  
garantia

Type: **SBC SC369**

SERIAL NO.: \_\_\_\_\_

Date of purchase — Date de la vente — Verkaufsdatum — Aankoopdatum — Fecha de compra — Data d'acquisto —  
Data da aquisição — Ημερομηνία αγοράς — Inköpsdatum — Anskaffelsesdato — Kjøpedato — Ostöpäivä —

Dealer's name, address and signature  
Nom, adresse et signature du revendeur  
Name, Anschrift und Unterschrift des Händlers  
Naam, adres en handtekening v.d. handelaar  
Nombre, dirección y firma del distribuidor  
Nome, indirizzo e firma del fornitore

Όνοματεπώνυμο, διεύθυνση και υπογραφή του εμπ. προμηθευτή  
Återförsäljarens namn, adress och signatur  
Forhandlerens navn, adresse og underskrift  
Forhandlerens navn, adresse og underskrift  
Jälleenmyyjän nimi, osoite ja allekirjoitus  
Nome, morada e assinatura da loja

6 month guarantee on rechargeable batteries  
6 mois de garantie sur les piles rechargeables  
6 meses de garantía para las pilas recargables  
6 Monate Garantie auf wiederaufladbare Batterien  
6 maanden garantie op oplaadbare batterijen  
Garanzia di 6 mesi sulle batterie ricaricabili

Pilhas recarregáveis com 6 meses de garantia  
Εγγύηση 6 μηνών σε επαναφορτιζόμενες μπαταρίες  
6 månaders garanti på laddningsbara batterier  
6 månaders garanti på genopladelige batterier  
6 månaders garanti på de oppladbare batteriene  
Ladattavilla akuilla on 6 kuukauden takuu

www.philips.com

This document is printed on chlorine free produced paper  
Data subject to change without notice  
Printed in China

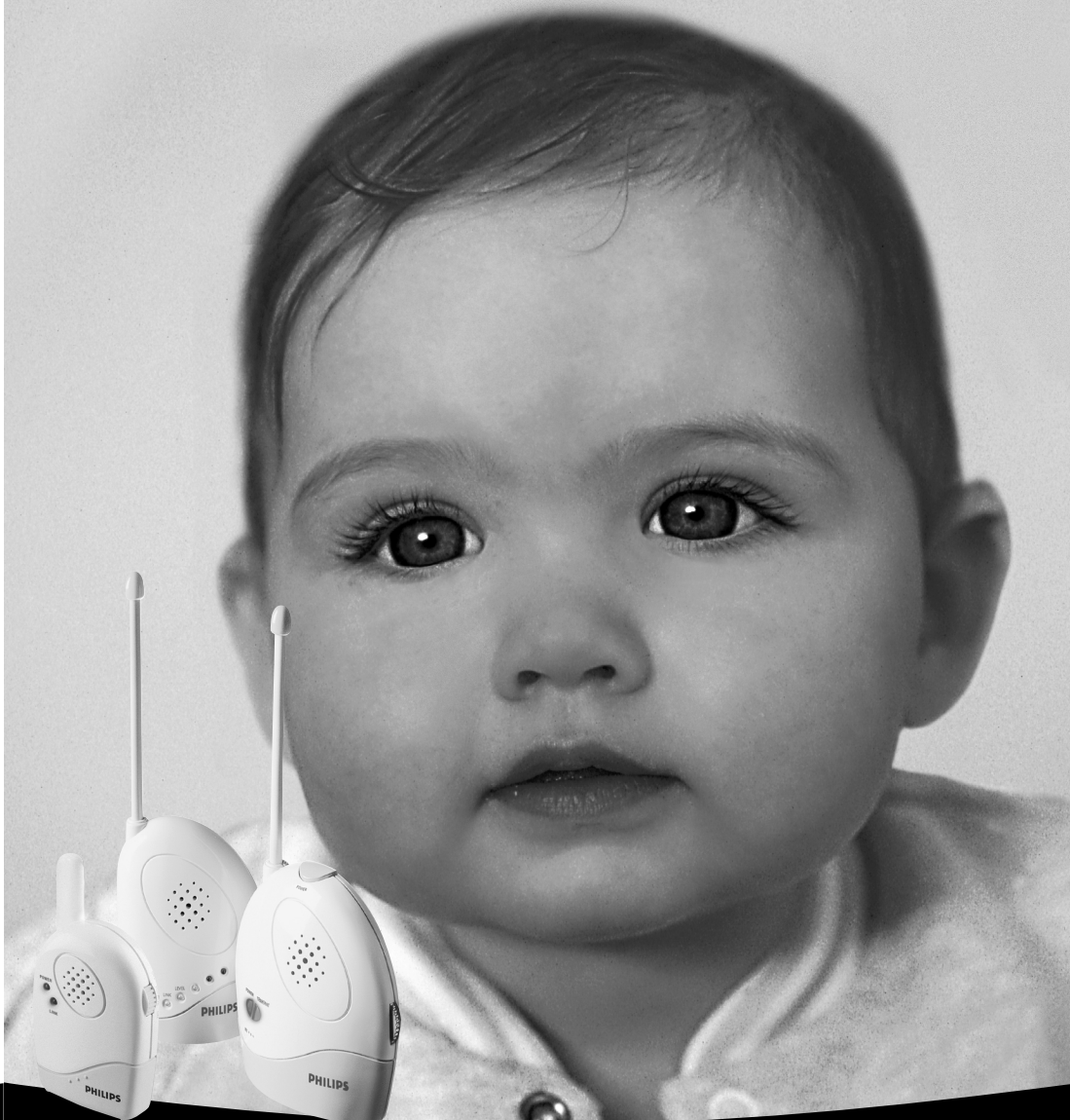
CE06820



baby monitor

SBC SC369

Instructions for use



Let's make things better.

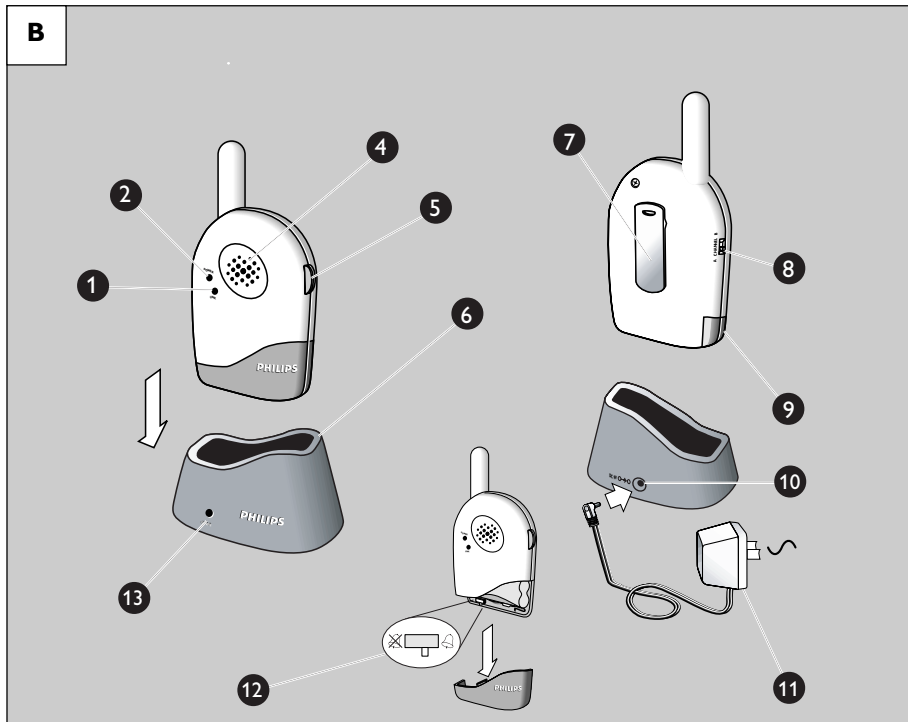
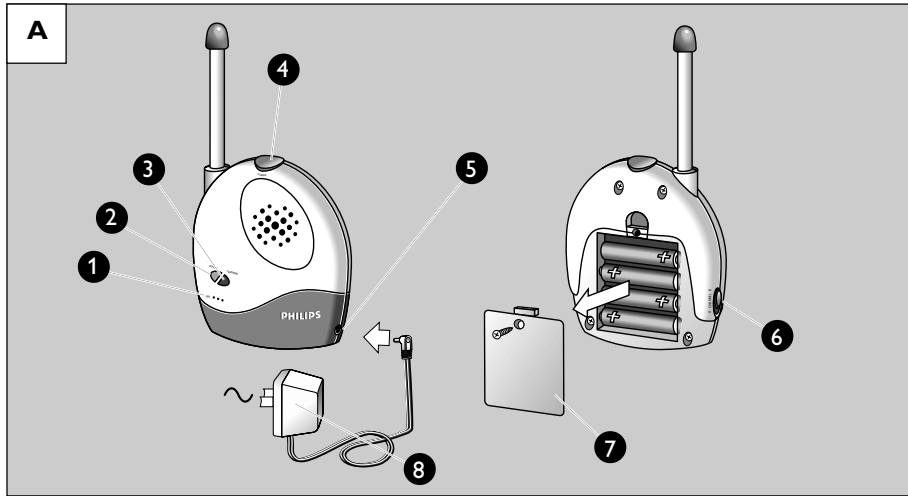


PHILIPS

Let's make things better.



PHILIPS

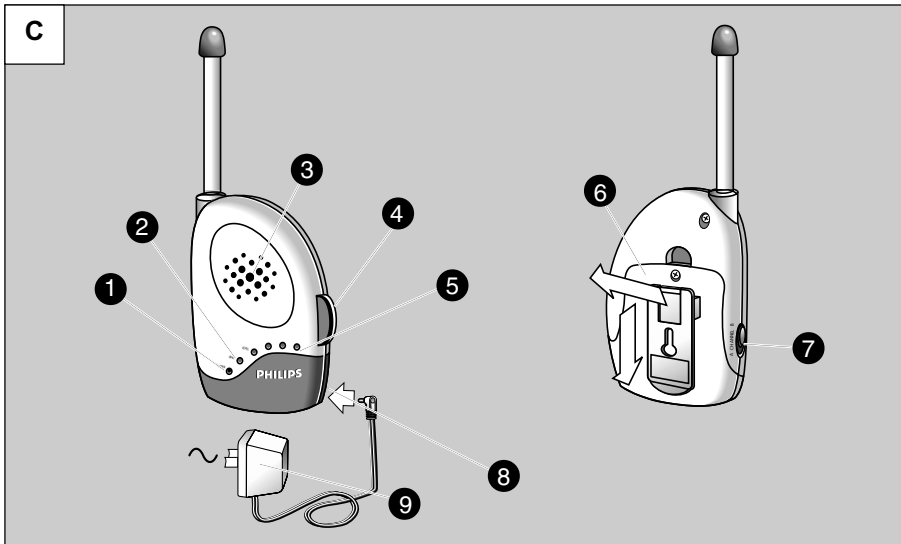


## BABY UNIT

A-1	Microphone-----	high-sensitivity microphone
A-2	Power light-----	lights when unit is powered; flashes when batteries are low
A-3	Transmit light-----	lights when a sound is being transmitted
A-4	Power pushbutton-----	push this button to switch the unit on or off
A-5	DC power supply socket-----	plug mains adapter connector into this socket
A-6	Channel selection switch-----	select channel A or B (whichever has least interference)
A-7	Battery compartment cover-----	unscrew and unclip to insert batteries
A-8	AC power adapter-----	plug into AC mains socket and into DC power supply socket

## SMALL PARENT UNIT

B-1	System check light-----	lights to show that both units are in touch with each other
B-2	Power light-----	lights when unit is powered; flashes when batteries are low
B-4	Loudspeaker-----	provides clear sound
B-5	Loudspeaker Volume control / Off switch-----	<ul style="list-style-type: none"><li>• set loudspeaker level;</li><li>• switches off the power to the unit completely</li></ul>
B-6	Charging base-----	place unit in base to operate it on mains power and when batteries are low
B-7	Belt clip-----	handy clip for carrying the unit
B-8	Channel selection switch-----	select channel A or B (same as Baby unit)
B-9	Battery compartment cover-----	unclip to replace batteries
B-10	DC power supply socket-----	plug mains adapter connector into this socket
B-11	AC power adapter-----	plug into AC mains socket and into DC power supply socket
B-12	Audible warning switch-----	sets audible link alarm on or off
B-13	Charging base light-----	lights when unit is in the base and charging



### BIG PARENT UNIT

- |     |   |   |
|-----|---|---|
| C-1 | Power light -----                             | lights when unit is powered; flashes when batteries are low   |
| C-2 | System check light -----                      | lights to show that both units are in touch with each other   |
| C-3 | Loudspeaker -----                             | provides clear sound  |
| C-4 | Loudspeaker Volume control / Off switch ----- | <ul style="list-style-type: none"> <li>• set loudspeaker level;</li> <li>• switches off the power to the unit completely</li> </ul> |
| C-5 | Sound-level lights -----                      | the more sound your baby makes, the more lights that light  |
| C-6 | Battery compartment cover -----               | unscrew and unclip to replace batteries   |
| C-7 | Channel selection switch -----                | select channel A or B (same as Baby unit)   |
| C-8 | DC power supply socket -----                  | plug mains adapter connector into this socket   |
| C-9 | AC power adapter -----                        | plug into AC mains socket and into DC power supply socket   |

#### IMPORTANT!

This Baby Monitor is intended as an aid. It is not a substitute for responsible and proper adult supervision and should not be used as such.

Make sure the Baby unit and adapter cable are always out of reach of the baby, at least 1 metre away. Never place the Baby unit inside the baby's bed or playpen!

The antennas on the Parent and Baby units are fixed; do not try to extend them.

Never cover the Baby unit (with a towel, blanket, etc.)

### TECHNICAL SPECIFICATIONS

#### Power supply

- Battery pack; rechargeable NiMH for small Parent Unit (included);
- Optional batteries 4 x 1.5V; AA alkaline for Baby Unit and big Parent unit (not included);
- AC power adapter 230V AC, 50 Hz (three included): - Output voltage 9V DC, 200mA.

Only use the AC power adapter included or a type that complies with safety standard EN60950 and that has the following specification: 9 Volt DC / 200mA.

#### Operating range

- up to 200 metres in ideal conditions (This means that the units can see each other with no obstacles in between. Walls, ceilings, large objects and even glass affect the operating range. The more obstacles in between, the shorter the operating range)
- 10°C to 40°C

#### Continuous transmission

- the baby unit now monitors sounds continually as long as it is switched on. This feature means that you can be confident of hearing any sounds your baby makes at all times.

#### Transmission frequencies

	<u>Channel A</u>	<u>Channel B</u>
SBC SC369/05 (IRE, UK):	49.890 MHz	49.830 MHz

#### SBC SC369/05

#### R&TTE Directive 1999/5/EC

BE	DK	GR	ES	FR
IRE ✓	IT	LU	NL	AT
PT	FI	SE	UK ✓	NO
DE	CH			

CE06820!

#### ☎ Helpline

IRELAND  
Phone : 01- 7640292

UK  
Phone : 0208-665-6350

## PROBLEM SOLVING

Problem	Possible Cause	Solution
Power light does not light (Parent unit).	Unit is not turned on.	Turn Volume control/Off switch clockwise (B-4, C-4).
	Batteries are low.	Recharge batteries.
Power light does not light (Baby unit).	Unit is not turned on.	Push the <b>Power</b> switch (A-4) to switch on the unit.
	AC adapter is not plugged in or Batteries are exhausted.	Plug in AC adapter or replace batteries.
	AC adapter plugged into an outlet that is not working.	If the power socket has a switch, turn it on.
High pitched noise.	Units are too close together.	Move Parent unit away from Baby unit.
	Volume too high.	Turn volume control on Parent unit counter-clockwise.
Parent unit batteries do not charge.	Battery life is at an end.	Replace rechargeable battery pack.
No sound.	Volume control on Parent unit is set too low.	Turn volume control/Off switch clockwise (B-4, C-4).
	Units are out of range.	Move Parent unit closer to Baby unit.
Power light blinking.	Batteries are low or empty.	Parent unit:- recharge batteries. Baby unit:- replace batteries or connect to mains power.
Interference or poor reception.	Mobile or cordless phones too close to the baby monitor can cause interference.	Move the phones away from the units.
Receiving signals from a different baby monitor.	Both systems are using the same frequencies	Switch channels.
System check light flashing/ system check alarm activated	Units are out of range or there is interference from another FM source	Move parent units closer to baby unit to restore the link. Remove the other FM source.

## GETTING THE UNITS READY FOR USE

### Baby unit

Connect the AC power adapter (A-9) to an AC mains socket, and then connect the cord to the DC power supply socket (A-5) of the Baby unit.

If you want to use batteries, remove the battery compartment cover (A-7) using a screwdriver. Insert four 1.5V, AA batteries (not included; we recommend non-chargeable Philips Alkaline batteries), noting the + and - configuration inside the battery compartment. Put the cover back in place and tighten screw.

The Baby unit operates cordlessly for up to 30 hours on fresh batteries. The red **POWER** light (A-2) flashes when battery power is low. If this happens install new batteries.

**Note:** To switch off the Baby unit completely push the **POWER** button (A-4) .

### Small Parent unit

The small Parent unit uses a rechargeable battery pack. This is already installed, but first it must be charged for at least 14 hours as follows before using the unit outside the charging base:

- Connect the AC power adapter (B-11) to an AC mains socket, and then connect the cord to the DC power supply socket (B-10) of the charging base (B-6).
- Place the small Parent unit inside the charging base. The red charging light (B-13) lights.

The small Parent unit can be operated now but you should leave it in the charging base until the batteries are fully charged (at least 14 hours). When the batteries are fully charged, take the small Parent unit out of the charging base and use cordlessly for up to 12 hours.

When the red **POWER** light (B-2) on the small Parent unit flashes, the battery power is low. Place the small Parent unit inside the charging base to recharge the batteries.

### Big Parent unit

Connect the AC power adapter (C-9) to an AC mains socket, and then connect the cord to the DC power supply socket (C-8) of the big parent unit.

If you want to use batteries, remove the battery compartment cover (C-6) using a screwdriver. Insert four 1.5V, AA batteries (not included; we recommend non-chargeable Philips Alkaline batteries), noting the + and - configuration inside the battery compartment. Put the cover back in place and tighten screw.

The big Parent unit operates cordlessly for up to 30 hours on fresh batteries. The red **POWER** light (C-1) flashes when battery power is low. If this happens install new batteries.

## HOW TO USE THE BABY MONITOR

### Monitoring baby's sounds

Both Parent units can be used at the same time. To use the units to listen to your baby:

- Position the Baby unit at least 1 metre away from the baby so that the microphone (A-1) can pick up baby's sounds.
- Set the channel switch to the same position on both units.
- Push the **POWER** switch on the baby unit (A-4) to switch it on.
- The green **TRANSMIT** light (A-3) lights when a sound is picked up.
- Move away from the Baby unit with the Parent unit.
- Switch on the big Parent unit using the Volume control/Off (C-4) and adjust the volume to the level you prefer.
- Switch on the small Parent unit using the Volume control/Off (B-5) and adjust the volume to the level you prefer.

The green **SYSTEM CHECK** lights (B-1, C-2) light continuously when the Parent units and the Baby unit are in touch with each other.

## ADDITIONAL FEATURES

### Avoiding interference

All units use anti-interference technology to reduce the chance of interference from other signals. If interference does occur or if sound reception is poor, try switching all units to the other channel to improve the sound quality.

**Note:** *Always make sure that the channel selection switches (A-6, B-8, C-7) on all units are set to the same position.*

### Sound-level lights

The big Parent unit has sound-level lights (C-5), which visually alert you to baby's sounds even when the volume control is turned down. The louder the sound received from the Baby unit, the more lights light.

### Checking that the units are in touch


The green **SYSTEM CHECK** lights (B-1, C-2) of the Parent units light continuously to show that the Parent units and the Baby unit are in touch with each other. This light flashes if the Baby unit is out of range for more than 30 seconds or if the signal is blocked.

When the units are no longer in touch, try one of the following:

- Move the Parent unit closer to the Baby unit. (The maximum operating distance is 200m in ideal conditions. Walls and floors can limit this distance.)
- Switch all units to the other channel.
- Check that the units are powered correctly (low batteries?).

### Switching on the audible warning

If you wish, you can switch on a special feature that lets you hear an audible warning on the small Parent unit when the units are not in touch. The small Parent unit is delivered with this beep switched off to avoid intermittent disturbances that can occur when the connection is interrupted for a short period.

To switch on the audible warning, open the small Parent unit's battery compartment cover (B-9) and set the switch (B-12) inside to the On position (  ).

**Note:** *The **SYSTEM CHECK** light (B-2) continues to operate even if the audible warning is switched off.*

### Belt clip

When the batteries of the small Parent unit are charged, the unit can be carried around giving you freedom of movement while still monitoring your baby. Use the belt clip (B-7) to attach the unit to your clothing and so keep your hands free. The belt clip can be removed by unclipping the top and sliding it downwards. (The big Parent unit also has a belt clip for carrying it when it is used with batteries.)

### Finder feature

If you misplace the small parent unit, you can find it again by switching off the baby unit. About 30 seconds later the small parent unit will start beeping.

**Note:** *This only works if the audible warning is switched on inside the battery compartment of the small parent unit (see *Switching on the audible warning*).*

## Free Manuals Download Website

<http://myh66.com>

<http://usermanuals.us>

<http://www.somanuals.com>

<http://www.4manuals.cc>

<http://www.manual-lib.com>

<http://www.404manual.com>

<http://www.luxmanual.com>

<http://aubethermostatmanual.com>

Golf course search by state

<http://golfingnear.com>

Email search by domain

<http://emailbydomain.com>

Auto manuals search

<http://auto.somanuals.com>

TV manuals search

<http://tv.somanuals.com>