

One Year Limited Warranty

Garantía Limitada de Un Año

Garantie limitée à un an

www.philips.com

This document is printed on chlorine free produced paper

Specifications and design are subject to change without notice



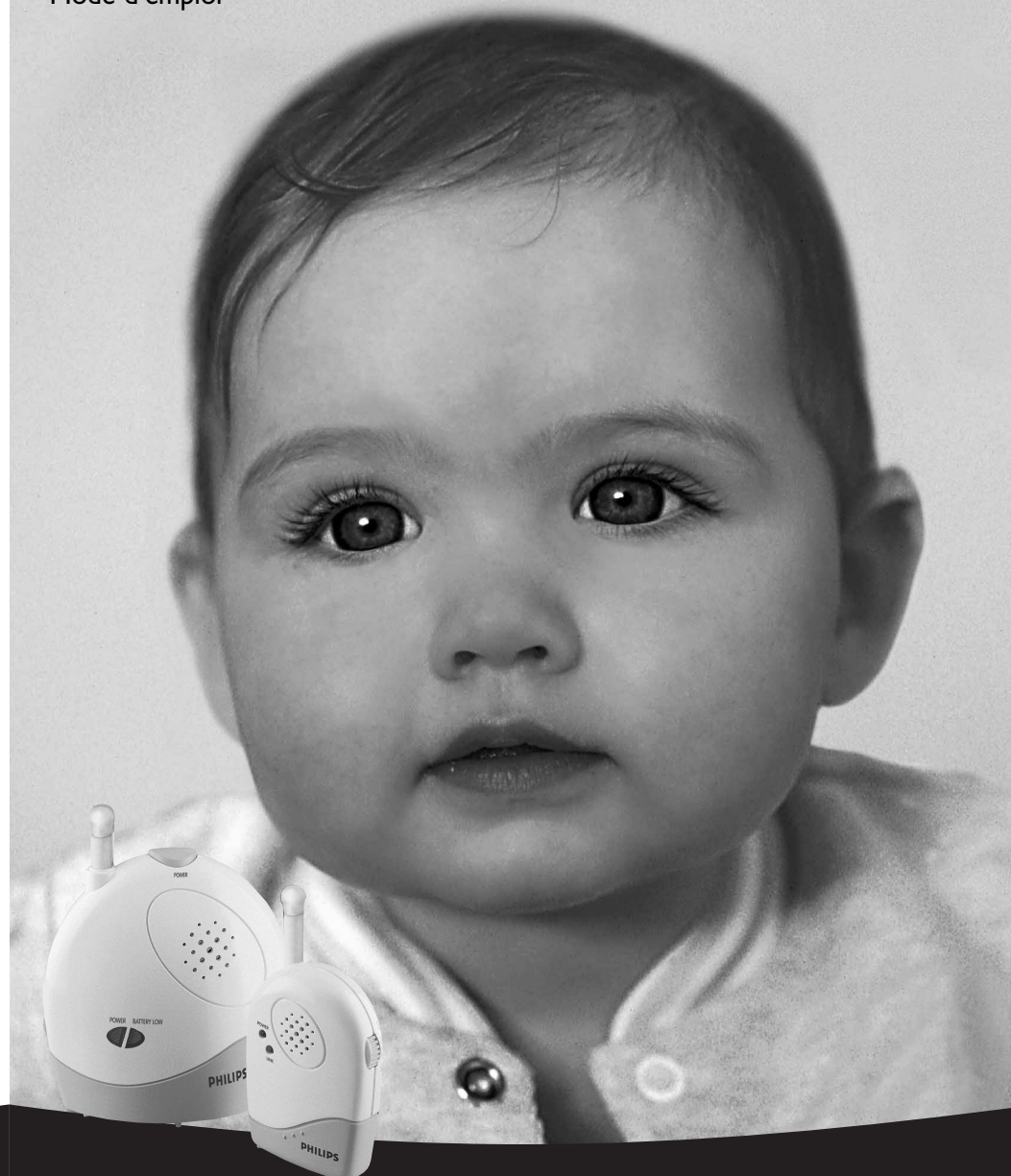
ultra-compact monitor

SBC **SC765**

Instructions for use

Instrucciones de manejo

Mode d'emploi



CONTENTS

Baby Unit	2
Parent Unit	2
Congratulations	3
Special Features	3
Important Information	4
Quick Reference	5
Getting the Units Ready for Use	6
How to Use the Baby Monitor	8
Problem Solving	12
Technical Specifications	43

ÍNDICE

Unidad de Bebé	16
Unidad de Padres	16
¡ Felicidades !	17
Características Especiales	17
Información Importante	18
Referencia Rápida	19
Preparar las Unidades para el Uso	20
Cómo usar el Monitor de Bebé	22
Resolver Problemas	26
Especificaciones Técnicas	43

SOMMAIRE

Unité bébé	30
Unité parents	30
Félicitations	31
Fonctions spéciales	31
Information importante	32
Installation rapide	33
Comment préparer les unités	34
Comment utiliser le babyphone	36
Résolution des problèmes	40
Caractéristiques techniques	43

Let's make things better.

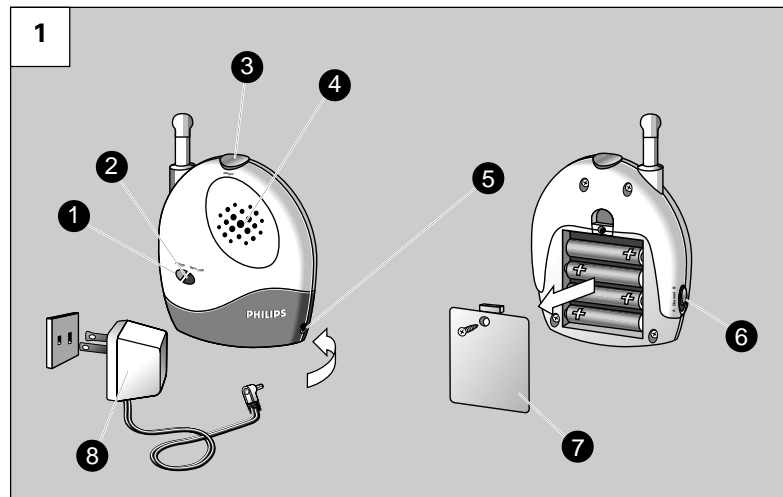


PHILIPS

Let's make things better.

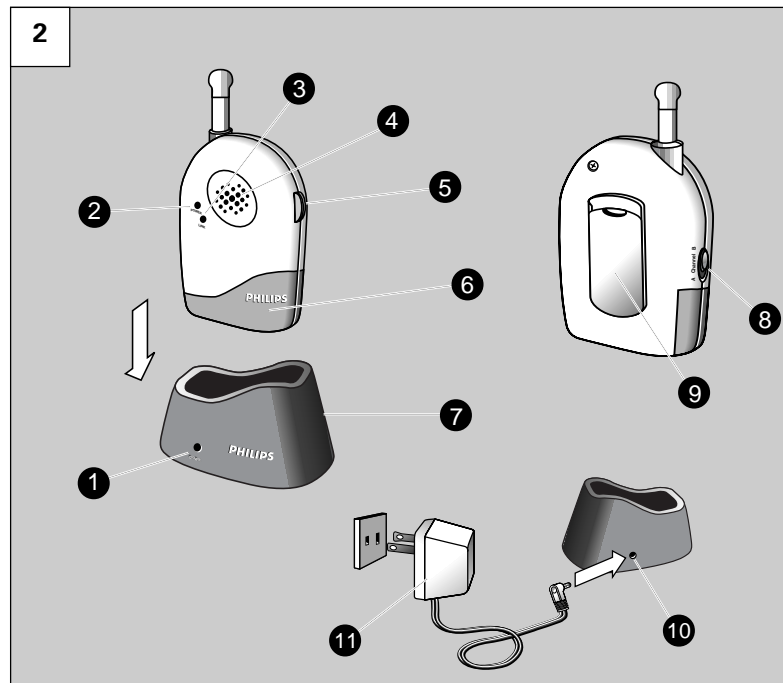


PHILIPS



BABY UNIT

- 1-1 Power light
- 1-2 Battery low light
- 1-3 On/Off push button
- 1-4 Microphone
- 1-5 DC power supply jack
- 1-6 Channel selection switch
- 1-7 Battery compartment cover
- 1-8 AC power adapter



PARENT UNIT

- 2-1 Charging base light
- 2-2 Power light
- 2-3 Link light
- 2-4 Loudspeaker
- 2-5 Volume control / On/Off switch
- 2-6 Battery compartment cover
- 2-7 Charging base
- 2-8 Channel selector
- 2-9 Belt clip
- 2-10 DC power supply jack
- 2-11 AC power adapter

TECHNICAL SPECIFICATIONS

Power supply:

- Batteries 3 x 1.2V AAA (SBC EB3655/00); rechargeable NiMH for Parent Unit (included);
- Optional batteries 4 x 1.5V; AA for Baby Unit (not included);
- AC power adapter (SBC CS0920/23) 120V AC, 60 Hz (two included):
 - Output voltage 9V DC, 200mA.

Operating range:

- up to 600 feet
- 50°F to 104°F

Transmission frequencies:

- 906.3 MHz (Channel A)
- 907.1 MHz (Channel B)

ESPECIFICACIONES TÉCNICAS

Fuente de alimentación:

- Pilas 3 x 1,2V AAA (SBC EB3655/00); tipo NiMH recargables para unidad de Padres (incluidas);
- Pilas opcionales 4 x 1,5V; tipo AA para Unidad de Bebé (no incluidas);
- Adaptador de alimentación de corriente alterna (SBC CS0920/23) 120V AC, 60Hz (dos incluidos): - Voltaje de operación: 9 voltios de corriente continua, 200mA.

Alcance de operación:

- hasta 600 pies
- 50°F - 104°F

Frecuencias de transmisión:

- 906,30 MHz (Canal A)
- 907,1 MHz (Canal B)

CARACTÉRISTIQUES TECHNIQUES

Alimentation:

- Piles rechargeables 3 x 1.2V AAA (SBC EB3655/00); NiMH pour l'unité parents (comprises);
- Piles optionnelles 4 x 1.5V; AA pour l'unité bébé (non comprises);
- Adaptateur d'alimentation c.a. (SBC CS0920/23) 120V AC, 60 Hz (deux adaptateurs compris): - Tension de service: c.c. 9 V, 200mA.

Plage de fonctionnement:

- jusqu'à 182 mètres
- 50°F - 104°F

Fréquences de transmission:

- 906.3 MHz (canal A)
- 907.1 MHz (canal B)

Free Manuals Download Website

<http://myh66.com>

<http://usermanuals.us>

<http://www.somanuals.com>

<http://www.4manuals.cc>

<http://www.manual-lib.com>

<http://www.404manual.com>

<http://www.luxmanual.com>

<http://aubethermostatmanual.com>

Golf course search by state

<http://golfingnear.com>

Email search by domain

<http://emailbydomain.com>

Auto manuals search

<http://auto.somanuals.com>

TV manuals search

<http://tv.somanuals.com>