



SCB1225NB SCB1230NB

EN User manual
CH 用户手册



SCB1225NB/1230NB Battery charger

EN

Important Safety Instructions:

Save these instructions - this manual contains important safety and operating instructions for this charger. Before using your charger read all instructions and cautionary markings on the charger, the batteries to be charged and the products that use the batteries.

Warning:

- Use to charge AA (1.2V, 600 - 2500 mAh, Ni-MH/Ni-Cd) and AAA (1.2V, 100 - 1000 mAh, Ni-MH/Ni-Cd) rechargeable batteries only. For environmental reasons, we advise the use of Ni-MH batteries only. Do not charge Alkaline, Zinc Carbon, Lithium or any other type of battery not specified on the charger. Other types of batteries might burst or leak causing personal injury.
- For proper battery insertion, please observe pole indications (+/-). See fig. A.
- Do not dispose of in fire, short circuit or open.
- Charge new batteries before using.
- Never alter the plug.
- Do not operate the charger if it has been subjected to shock or if it is damaged.
- Do not disassemble the charger.
- To avoid risk of electric shock, unplug the charger from the electrical outlet before cleaning or when not in use.
- This battery charger is for indoor use only. Do not expose the charger to rain or excessive moisture. Keep the charger away from dust and dirt, which can cause premature wear of parts or harm its normal operation.
- Never use the charger as a power source for any electrical equipment.
- Do not incinerate, disassemble or short circuit batteries since they may burst or release toxic materials.
- This charger is not intended for use by young children or infirm persons without supervision.
- Do not operate the charger if the plug is damaged.
- Do not charge AAA and AA batteries in the same slot.
- Do not charge damaged or leaking batteries.
- Charge Ni-Cd and Ni-MH batteries separately.
- Remove the batteries from the charger before it is scrapped. Dispose of the batteries safely.

Specifications/规格

Input voltage 输入电压	AC 220-240V, 50/60Hz, 6W AC 220-240V, 50/60Hz, 6W	
Output voltage 输出电压	AA AAA 5号 7号	1.4V x 2 1.4V x 2 1.4V x 2 1.4V x 2
Charging current 充电电流	AA AAA 5号 7号	170 - 200mA 80 - 100mA 170 - 200mA 80 - 100mA

Care:

- Wipe the charger with a damp cloth occasionally without harsh chemicals, cleaning solvents or strong detergents.
- Charger and batteries must be disposed of separately. Inform yourself about the separate collection system for electrical and electronic products.

Operating instructions

General charging guidelines

- At the same time you can charge one or two AA or AAA batteries or one AA and one AAA battery.
- For long battery life, only charge empty batteries.
- When charging, ambient temperature should be between 0°C and 40°C (32°F and 104°F).
- You can charge batteries with different capacity (mAh) and size (AA/AAA) at the same time.

Note: it is normal for the unit and the batteries to become warm while charging.

Charging batteries

- 1 Insert batteries into the charger. See fig. A.
- 2 Plug the charger into a wall outlet. See fig. B.
> The green charge LED(s) will illuminate, indicating that charging is in progress. The LED(s) will remain lit until charging is stopped manually.
- 3 When finished, unplug the charger from the power source and remove the batteries. See fig. C. Always unplug between charges!

Battery charging times: See fig. D.

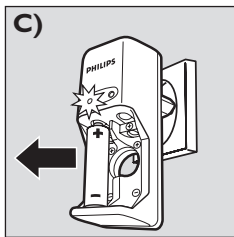
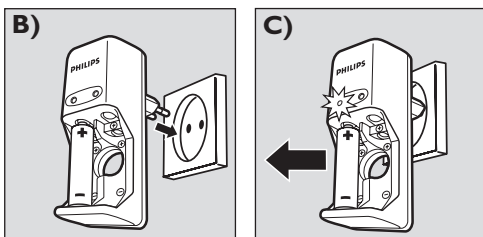
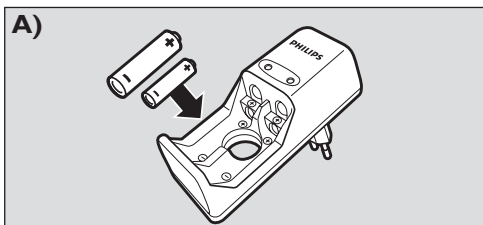
Charging times are for reference only as they may differ per brand and performance of batteries as well as environmental conditions at the time of charging.

Visit our website at: www.philips.com

© 0682 0

Specifications are subject to change without notice.
Trademarks are the property of Koninklijke Philips Electronics N.V. or their respective owners.
© 2005 © Koninklijke Philips Electronics N.V. All rights reserved.
www.philips.com

Enfocus Software - Customer Support



D)

**Battery charging times/
电池充电时间：**

Battery type 电池型号	Battery capacity (mAh) 电池容量 (mAh)	Approx. charging time 大约充电时间
5号 Ni-MH	2450 mAh	16 hrs/小时
5号 Ni-MH	2100 mAh	13 ½ hrs/小时
5号 Ni-MH	1300 mAh	8 ½ hrs/小时
7号 Ni-MH	1000 mAh	13 ½ hrs/小时
7号 Ni-MH	700 mAh	9 ½ hrs/小时

SCB1200NB/1225NB 电池充电器

CH

重要安全说明：

保存好这些说明 - 本手册包含此充电器的重要安全操作说明。使用充电器前，请阅读充电器、充电电池和使用这些电池的产品上标明的所有说明。

警告：

- 用于为 5 号 (1.2V, 600 - 2500 mAh, Ni-MH/Ni-Cd) 和 7 号 (1.2V 100 - 1000 mAh, Ni-MH/Ni-Cd) 可充电电池充电。出于环境原因，我们建议仅用于 Ni-MH 电池。切勿为碱性电池、锌碳电池、锂电池以及充电器上没有标明的其他类型的电池充电。为其他类型的电池充电可能爆炸或泄漏，导致人身伤害。
- 为了能够正确插入电池，请遵守极性指示 (+/-)，参见图 A。
- 切勿投入火中。切勿短路使用，切勿打开电池。
- 使用新电池前为其充电。
- 切勿改变插头。
- 充电器遭受电击或损坏后切勿再使用。
- 切勿拆卸充电器。
- 为避免电击风险，请清洁充电器前或不用时将其从插座上拔出。
- 此电池充电器只能在室内使用。切勿使充电器置于雨水中或过于潮湿之处。勿使泥土和灰尘进入充电器，否则会使零件过早磨损或妨害正常操作。
- 切勿将充电器用作任何电器的电源。
- 切勿烧弃、拆解或短路使用电池，否则电池可能爆炸或释放出有毒物质。
- 此充电器不能在无人监护的情况下由儿童或体弱的人使用。
- 如果插头损坏切勿使用充电器。
- 不能在相同的槽内为 7 号和 5 号电池充电。
- 切勿为已坏或泄露的电池充电。
- 分别为 Ni-Cd 和 Ni-MH 电池充电。
- 电池废弃前将其从充电器中取出，安全处理电池。

保养：

- 使用不带腐蚀性化学制品、清洁溶剂或强力清洁剂的湿布偶尔擦拭充电器。
- 必须分别处理充电器和电池。请您获悉您当地单独用于电子和电气产品的收集系统信息。

操作说明

常规充电指导

- 您可以同时为一节或两节 5 号/7 号电池充电或者为一节 5 号电池和一节 7 号电池充电。
- 为延长电池寿命，请耗尽电池的电量后充电。
- 充电时，环境温度应该在 0°C 到 40°C 之间 (32°F 到 104°F)。
- 可以同时为不同容量 (mAh) 和型号 (5 号/7 号) 的电池充电。

说明：充电时，装置和电池发热属于正常现象。

为电池充电

- 1 将电池插入充电器内。参见图 A。
- 2 将充电器插入墙壁插座。参见图 B。
- 3 充电完成后，断开充电器电源并取出电池。参见图 C。充电期间切勿拔出插头！

电池充电时间：参见图 D

由于充电时的电池品牌、电池性能以及环境条件有所不同，因此充电时间仅供参考。

请访问我们的网站：www.philips.com

请访问我们的网站：www.philips.com
Philips Consumer Electronics
P.O. Box 80002
5600 JB Eindhoven
The Netherlands

Enfocus Software - Customer Support

Free Manuals Download Website

<http://myh66.com>

<http://usermanuals.us>

<http://www.somanuals.com>

<http://www.4manuals.cc>

<http://www.manual-lib.com>

<http://www.404manual.com>

<http://www.luxmanual.com>

<http://aubethermostatmanual.com>

Golf course search by state

<http://golfingnear.com>

Email search by domain

<http://emailbydomain.com>

Auto manuals search

<http://auto.somanuals.com>

TV manuals search

<http://tv.somanuals.com>