

# Quick Start Guide



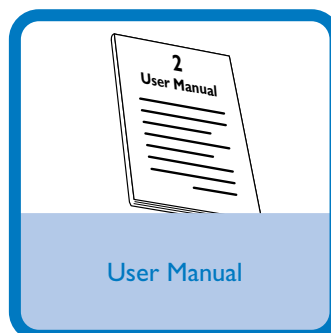
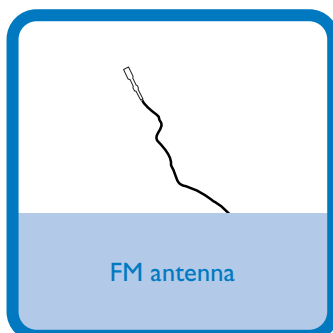
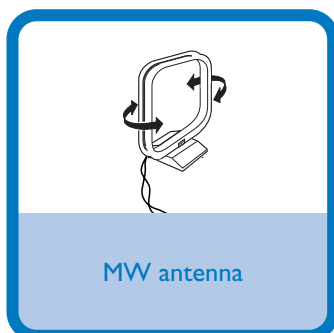
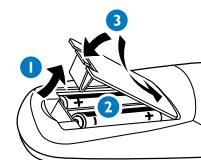
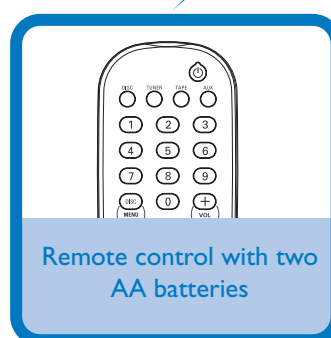
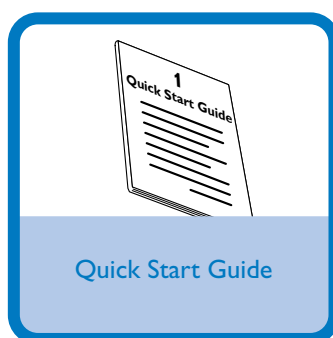
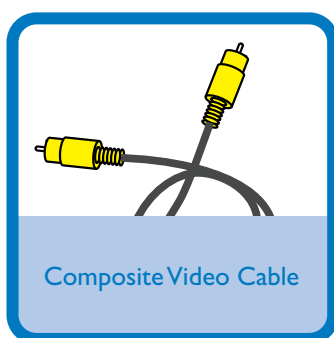
Step A *Connect*

Step B *Setup*

Step C *Enjoy*

## What's in the Box?

You should find these items upon opening the box.



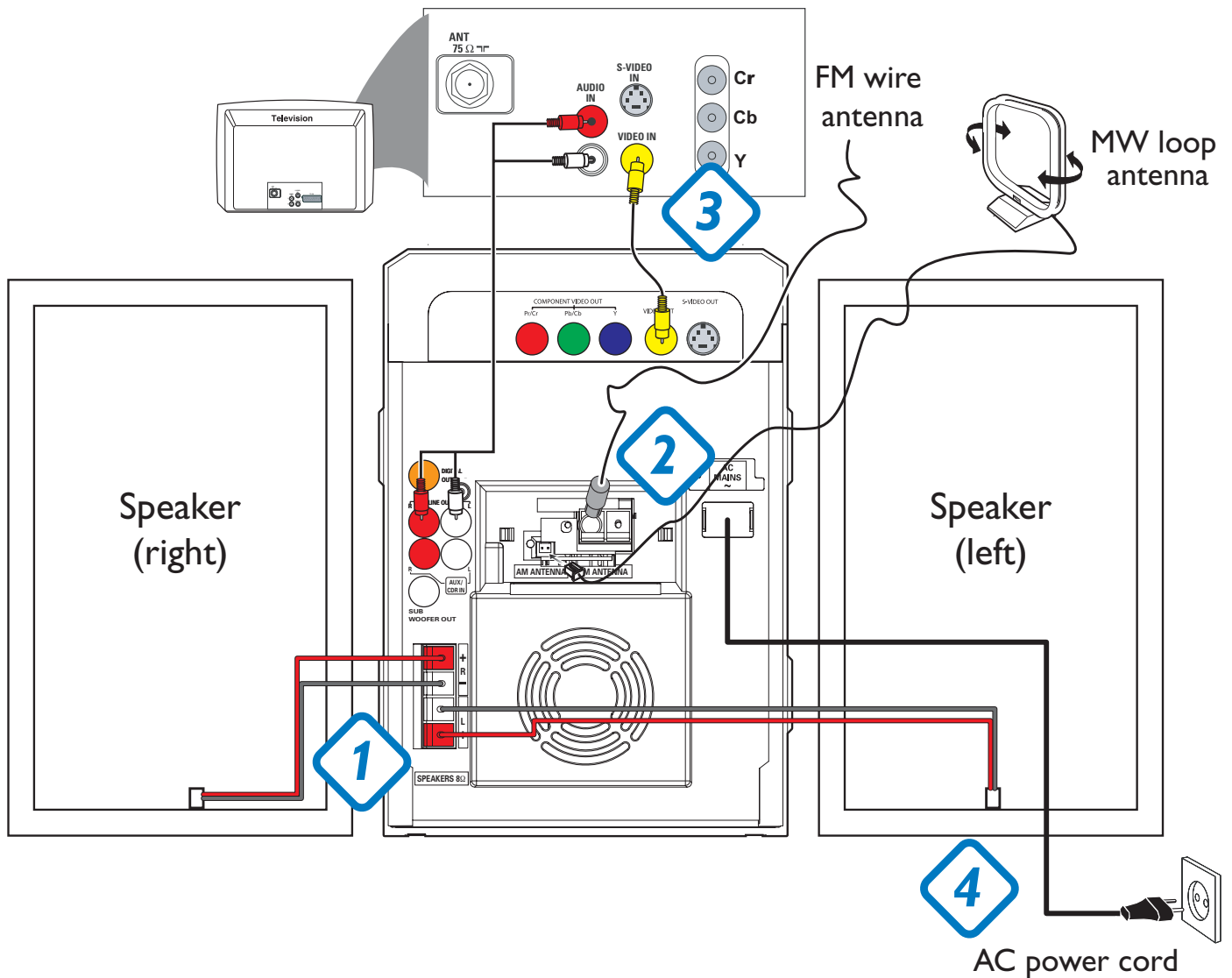
# PHILIPS

## Step A *Connect*

### Tip

See the User Manual for other TV connection options.

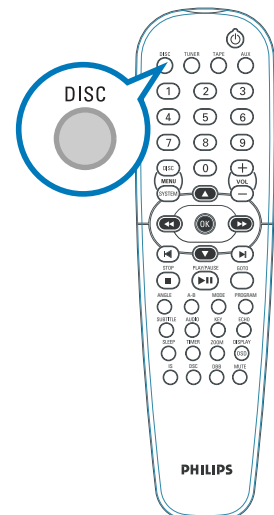
- 1 Connect the speaker cables.
- 2 Connect the MW and FM antennas.
- 3 Connect the composite video cable to a TV.
- 4 Connect the power cords of the system and TV.



## Step B *Setup*

### Setting up the TV

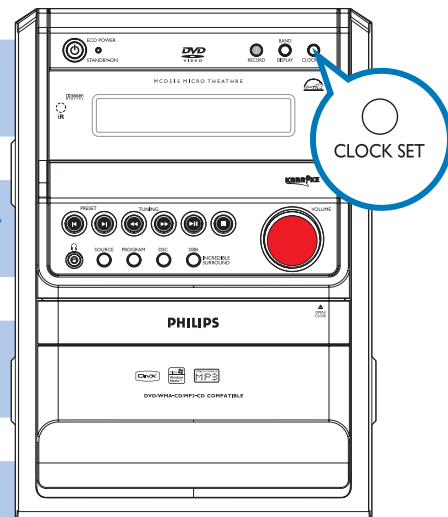
- 1 Press **SOURCE** (**DISC** on the remote) to select disc source.
- 2 Turn on the TV and set it to the correct Video In channel.



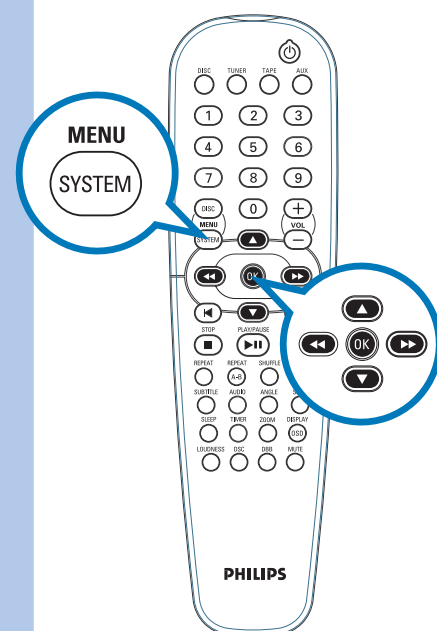
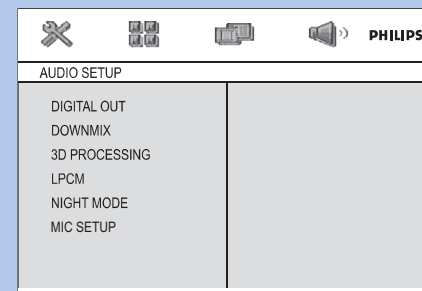
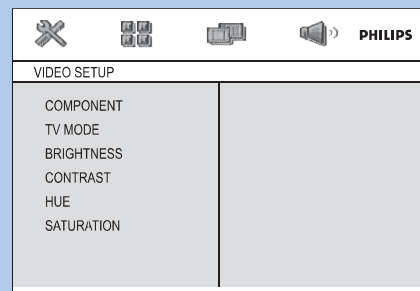
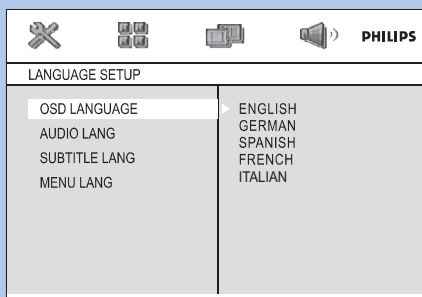
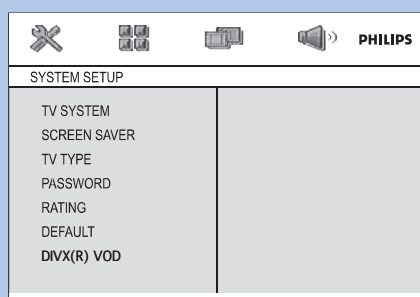
## Step B Setup

### Setting the clock

- 1 In standby mode, press and hold **CLOCK SET** on the system.
- 2 When the hour digits flash, turn the **VOLUME** control on the front panel or press **VOL+/-** on the remote to set the hours.
- 3 Press **CLOCK SET** again and the minute digits flash. Then turn the **VOLUME** control on the front panel or press **VOL+/-** on the remote to set the minutes.
- 4 Press **CLOCK SET** again to confirm the time setting.



### Setting system menu options



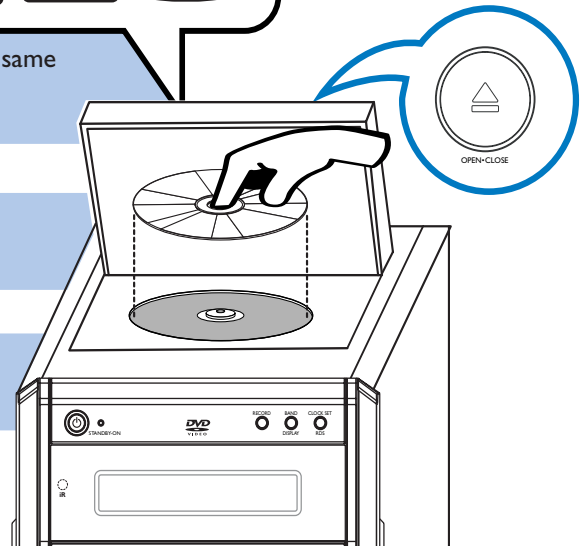
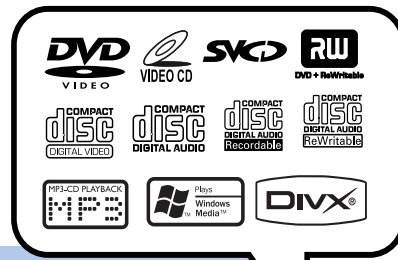
#### Tip

See chapters "Preparations" and "System Menu Options" in the User Manual for detailed descriptions.

## Step C Enjoy

### Playing a disc

- 1 Press **OPEN•CLOSE▲** to open the disc tray and load in a disc, then press the same button again to close the disc tray.  
→ Make sure the label side of the disc is facing up.
- 2 Playback will start automatically. If not press **PLAY/PAUSE▶II**.
- 3 To stop playback, press **STOP■**.

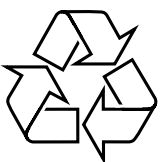


### Programming and tuning to radio stations

- 1 Press **SOURCE (TUNER)** on the remote to select tuner source.
- 2 Press **PROGRAM** for more than three seconds to program all available stations in order of waveband.
- 3 Press **PRESET◀/▶** until the desired preset station is displayed.

#### Tip

Detailed playback features and additional functions are described in the accompany owner's manual.



## Free Manuals Download Website

<http://myh66.com>

<http://usermanuals.us>

<http://www.somanuals.com>

<http://www.4manuals.cc>

<http://www.manual-lib.com>

<http://www.404manual.com>

<http://www.luxmanual.com>

<http://aubethermostatmanual.com>

Golf course search by state

<http://golfingnear.com>

Email search by domain

<http://emailbydomain.com>

Auto manuals search

<http://auto.somanuals.com>

TV manuals search

<http://tv.somanuals.com>