



© Royal Philips Electronics N.V. 2009  
All rights reserved.

Specifications are subject to change without notice.  
Trademarks are the property of Koninklijke Philips  
Electronics N.V. or their respective owners.

Printed in China

PDCC-2009

AJ4200\_12\_QSG\_V2.0

Welcome to Philips!

Register your product and get support at  
[www.philips.com/welcome](http://www.philips.com/welcome)

CLOCK RADIO

AJ4200



# Quick start guide

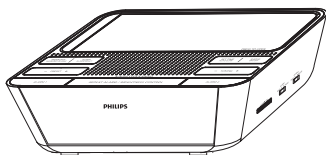
**1** Connect

**2** Setup

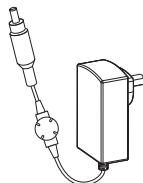
**3** Enjoy

**PHILIPS**

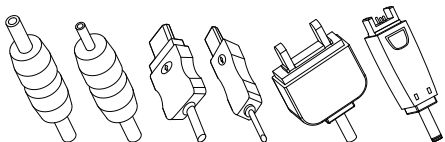
# What's in the box



Main unit



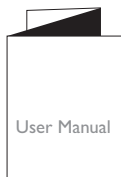
Power adapter



Mobile phone charger adapter



Quick Start Guide



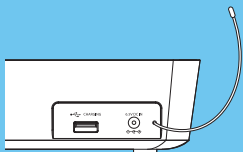
User Manual



Compatibility Sheet

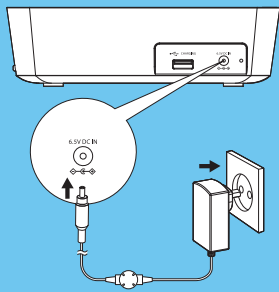
# 1 Connect

## A Prepare FM antenna



- 1 Fully extend the antenna and fix it to the wall as shown.

## B Connect power



- 1 Connect the power adapter to
  - the DC IN jack on the rear of the main unit
  - the power socket.

## 2 Setup

### A Set the clock

- 1 Press **RADIO ON/OFF** repeatedly to turn off radio.
- 2 Press and hold **SET TIME/AUTO SCAN** for 2 seconds.
- 3 Press **TUNING+/-** to set the year.
- 4 Press **SET TIME/AUTO SCAN** to confirm.
- 5 Repeat steps 3-4 to set the month.
- 6 Repeat steps 3-4 to set the date.
- 7 Repeat steps 3-4 to set the hour.
- 8 Repeat steps 3-4 to set the minute.
- 9 Repeat steps 3-4 to select 12 hour or 24 hour format.

### B Set the alarm timer

- 1 Press and hold **ALARM 1** or **ALARM 2** for two seconds.
  - ↳ The sound source icon, **AL1** or **AL2** icon and the hour digits begin to blink.

2 Switch **ALARM 1 BUZZ/RADIO** or **ALARM 2 BUZZ/RADIO** to buzz or radio to select alarm sound for alarm 1 and 2 respectively.

3 Press **TUNING+/-** to set the hour.

↳ 📻 appears and **AL1** or **AL2** begins to blink.

4 Press **ALARM 1** or **ALARM 2** to confirm.

↳ The minute digits begin to blink.

5 Press **TUNING+/-** to set the minute.

6 Press **ALARM 1** or **ALARM 2** to confirm.

↳ The weekdays begin to blink.

7 Press **WEEKDAY/WEEKEND ALARM** to select whether to ring alarm on weekdays or at weekend.

8 Press **ALARM 1** or **ALARM 2** to confirm.

↳ The apparatus turns on automatically at the set time and rings with radio or buzz.

## 2 Setup

### Turn on/off the alarm timer

1 Press **ALARM 1** or **ALARM 2** repeatedly to turn on or off the alarm timer.

↳ If the alarm timer is turned on, **AL1** or **AL2** appears.

↳ If the alarm timer is turned off, **AL** disappears.

### Repeat alarm

1 When the alarm sounds, press **REPEAT ALARM/BRIGHTNESS CONTROL**.

↳ The alarm repeats ringing minutes later.

### Note

- You can press **TUNING+/-** to adjust interval (5-15 minutes) to repeat alarm.

### Reset alarm

1 When the alarm sounds, press **SLEEP/ALARM RESET**.

↳ The alarm stops but the alarm settings retain for the next day.

### Stop alarm sound

1 When the alarm sounds, press **ALARM 1** or **ALARM 2**.

## 3 Enjoy

↳ The alarm stops but the alarm settings remain.

### A Listen to FM radio

1 Press **RADIO ON/OFF** repeatedly to turn on radio.

2 Press **TUNING+/-** to tune to a radio station.

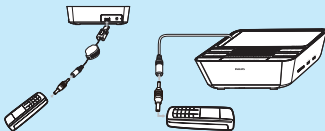
### B Charge your mobile phone

1 Press **PRES TO OPEN** to open the compartment.

2 Select a charger adapter that matches your mobile phone.

3 Take out the cable with the connector.

4 Connect the adapter to the connector or USB cable and then to your mobile phone.



## Free Manuals Download Website

<http://myh66.com>

<http://usermanuals.us>

<http://www.somanuals.com>

<http://www.4manuals.cc>

<http://www.manual-lib.com>

<http://www.404manual.com>

<http://www.luxmanual.com>

<http://aubethermostatmanual.com>

Golf course search by state

<http://golfingnear.com>

Email search by domain

<http://emailbydomain.com>

Auto manuals search

<http://auto.somanuals.com>

TV manuals search

<http://tv.somanuals.com>