

Always there to help you

Register your product and get support at
www.philips.com/welcome



SB170



User manual

PHILIPS

Contents

1 Important	2	9 Product information	9
Know these safety symbols	2	General information	9
Important safety instructions	2	Bluetooth	9
		Tuner (FM)	10
		Amplifier	10
		Speakers	10
2 Your product	3	10 Troubleshooting	10
Introduction	3	General	10
What's in the box	3	About Bluetooth device	11
3 Get started	4	11 Notice	11
Connect power	4	Compliance	11
Turn on	4	Disposal of your old product	12
Select a source	4	Trademark notice	12
Set the clock	4	Copyright	12
4 Use Bluetooth devices	5		
Connect a Bluetooth device	5		
Disconnect a device	6		
Reconnect a device	6		
Clear pairing history	6		
5 Charge through USB socket	6		
6 Listen to FM radio	7		
Store radio stations	7		
Tune to a radio station	7		
7 Play from an external device	8		
8 Other features	8		
Set an alarm timer	8		
Set the sleep timer	9		
Adjust display brightness	9		

1 Important

Know these safety symbols



This 'bolt of lightning' indicates uninsulated material within your unit may cause an electric shock. For the safety of everyone in your household, please do not remove product covering.

The 'exclamation mark' calls attention to features for which you should read the enclosed literature closely to prevent operating and maintenance problems.

WARNING: To reduce the risk of fire or electric shock, this apparatus should not be exposed to rain or moisture and objects filled with liquids, such as vases, should not be placed on this apparatus.

CAUTION: To prevent electric shock, fully insert the plug. (For regions with polarized plugs: To prevent electric shock, match wide blade to wide slot.)

Important safety instructions

- ① Read these instructions.
- ② Keep these instructions.
- ③ Heed all warnings.
- ④ Follow all instructions.
- ⑤ Do not use this apparatus near water.
- ⑥ Clean only with dry cloth.
- ⑦ Do not block any ventilation openings. Install in accordance with the manufacturer's instructions.
- ⑧ Do not install near any heat sources such as radiators, heat registers, stoves, or other apparatus (including amplifiers) that produce heat.
- ⑨ Protect the power cord from being walked on or pinched, particularly at plugs, convenience receptacles, and the point where they exit from the apparatus.
- ⑩ Only use attachments/accessories specified by the manufacturer.
- ⑪ Unplug this apparatus during lightning storms or when unused for long periods of time.
- ⑫ Refer all servicing to qualified service personnel. Servicing is required when the apparatus has been damaged in any way, such as power-supply cord or plug is damaged, liquid has been spilled or objects have fallen into the apparatus, the apparatus has been exposed to rain or moisture, does not operate normally, or has been dropped.
- ⑬ Apparatus shall not be exposed to dripping or splashing.
- ⑭ Do not place any sources of danger on the apparatus (e.g. liquid filled objects, lighted candles).
- ⑮ This product may contain lead and mercury. Disposal of these materials may be regulated due to environmental considerations. For disposal or recycling information, please contact your local authorities or the Electronic Industries Alliance: www.eiae.org.
- ⑯ Where the plug of the Direct Plug-in Adapter is used as the disconnect device, the disconnect device shall remain readily operable.

Warning

- Never remove the casing of this apparatus.
- Never lubricate any part of this apparatus.
- Never place this apparatus on other electrical equipment.
- Keep this apparatus away from direct sunlight, naked flames or heat.
- Make sure that you always have easy access to the power cord, plug, or adaptor to disconnect the apparatus from the power.

Note

- The type plate is located on the bottom of the product.

2 Your product

Congratulations on your purchase, and welcome to Philips! To fully benefit from the support that Philips offers, register your product at www.philips.com/welcome.

Introduction

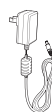
With this product, you can

- enjoy audio from your Bluetooth devices or other external audio devices,
- listen to FM radio,
- charge your USB devices, and
- wake up to buzzer alarm or radio.

What's in the box

Check and identify the contents of your package:

- Main unit
- Power adaptor
- Short user manual



3 Get started

Always follow the instructions in this chapter in sequence.

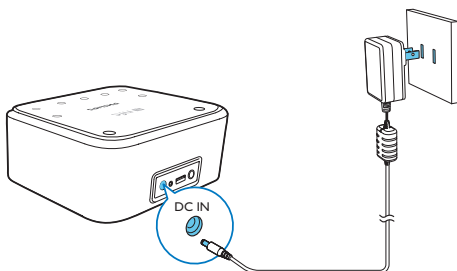
Connect power

! Caution

- Risk of product damage! Make sure that the power supply voltage matches the voltage printed on the bottom of this product.
- Risk of electric shock! When you unplug the AC power adaptor, always pull the plug from the socket. Never pull the cord.

Connect the AC power adaptor between

- the **DC IN** socket at the back of this product, and
- the power supply.



Turn on

Press **POWER**.

- ↳ The product switches to the last selected source.

Switch to standby mode

Press **POWER** again to switch the product to standby mode.

- ↳ The clock (if set) is displayed.

Select a source

Press **SOURCE/SET** to select a source.

- Bluetooth mode: Bluetooth indicator lights up.
- FM preset mode: **PXX** is displayed with **XX** blinking (**XX** indicates the preset number of the current station), and then the current station is broadcast with its frequency displayed.
- FM mode: The frequency of current station is displayed.
- **AUDIO IN** mode: **AUX** is displayed.

Set the clock

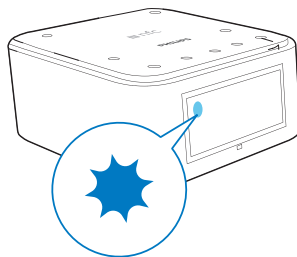
- 1 In standby mode, press and hold **SOURCE/SET** for two seconds.
↳ Hour digits begin to blink.
- 2 Press **- TUNE/TIME** or **TUNE/TIME+** repeatedly to set the hour.
- 3 Press **SOURCE/SET** to confirm.
↳ Minute digits begin to blink.
- 4 Press **- TUNE/TIME** or **TUNE/TIME+** repeatedly to set the minute.
- 5 Press **SOURCE/SET** to confirm.
↳ **[12H]** or **[24H]** begins to blink.
- 6 Press **- TUNE/TIME** or **TUNE/TIME+** to select a time format.
 - **[12H]**: 12-hour time format
 - **[24H]**: 24-hour time format
- 7 Press **SOURCE/SET** to confirm.
↳ The set time is displayed.

4 Use Bluetooth devices

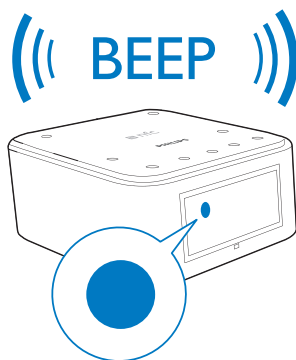
With this product, you can enjoy audio from a connected Bluetooth device.

Note

- WOOX Innovations does not guarantee the compatibility with all Bluetooth devices.
- Before pairing a device with this product, read its user manual for Bluetooth compatibility. Make sure that the connected Bluetooth device supports the Advanced Audio Distribution Profile (A2DP) and the Audio Video Remote Control Profile (AVRCP).
- The product can memorize a maximum of 4 paired devices.
- Make sure that Bluetooth function is enabled on your device, and your device is set as visible to all other Bluetooth devices.
- The operational range between this product and a Bluetooth device is approximately 10 meters (30 feet).
- Any obstacle between this product and a Bluetooth device can reduce the operational range.
- Keep away from any other electronic device that may cause interference.



- 2 On your Bluetooth device, enable the Bluetooth feature and search for devices.
- 3 In the device list, select **PHILIPS SB170**.
↳ If the Bluetooth connection is established, this product beeps twice and the Bluetooth indicator turns solid.



- 4 Play audio on your Bluetooth device.
↳ Audio comes out from this product.

Connect a Bluetooth device

Connect a Bluetooth device to this product, and then you can stream audio to this product through Bluetooth.

Connect manually

- 1 Press **SOURCE/SET** to switch this product to Bluetooth mode.
↳ The Bluetooth indicator blinks on the display panel.

Connect easily by NFC

If your Bluetooth device supports NFC (Near Field Communication), you can connect it with this product easily.

- 1 Press **SOURCE/SET** to switch this product to Bluetooth mode.
- 2 On your device, enable NFC and Bluetooth functions.
- 3 Tap the back of your Bluetooth device on the NFC tag on this product.

- 4 On your Bluetooth device, follow the on-screen instructions to complete the pairing and connection.

Disconnect a device

On your device, disable the Bluetooth connection with this product.

Note

- Before connecting another Bluetooth device, disconnect the current device first.

Reconnect a device

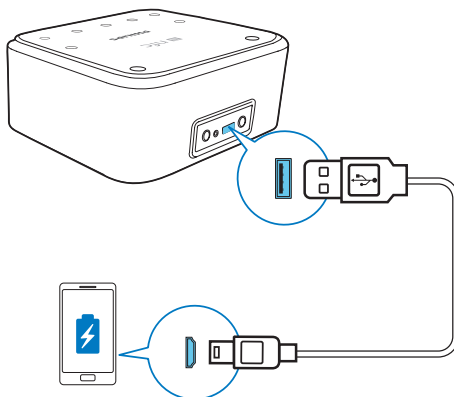
- For a paired Bluetooth device on which the automatic reconnection is enabled, this product reconnects with it once it is detected.
- For a paired Bluetooth device that does not support the automatic reconnection, reconnect it with this product manually.

Clear pairing history

In Bluetooth mode, press and hold **POWER** for 5 seconds.

5 Charge through USB socket

You can connect your USB device to this product for charging.



- 1 Connect a USB cable between
 - the **USB** socket on the back of this product, and
 - the USB socket on your USB device.
- 2 Connect this product to power.
 - ↳ Once the USB device is recognized, the charging starts.

Note

- The USB socket is used for charging only.

6 Listen to FM radio



Note

- Keep the antenna as far as possible from TV, VCR, or other radiation sources.
- For better reception, fully extend the antenna and adjust its position.
- This product can store a maximum of 20 FM radio stations.

Tune to a radio station

- To tune to the previous or next strong station, press and hold **- TUNING/TIME** or **TUNING/TIME +** for 2 seconds.
- To tune to a specific station, switch the source to FM mode, and then press **- TUNING/TIME** or **TUNING/TIME +** repeatedly until its frequency is displayed.

Store radio stations

Store radio stations automatically

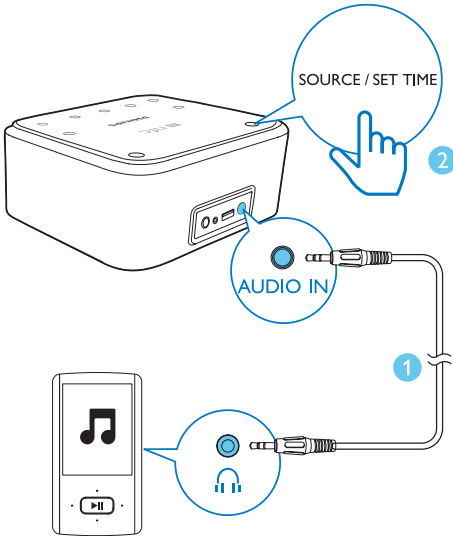
- For the first time when you switch the source to FM preset mode, the product starts to store radio stations automatically.
- To re-scan for radio stations afterwards, switch the source to FM mode, and then press and hold **SOURCE/SET** for 2 seconds.

Store radio stations manually

- 1 In FM preset mode, press and hold **- TUNING/TIME** or **TUNING/TIME +** for 2 seconds to tune to a radio station.
- 2 Press and hold **SOURCE/SET** for 2 seconds.
↳ **PXX** is displayed with the preset number **XX** blinking.
- 3 Press **- TUNING/TIME** or **TUNING/TIME +** to select a preset number for the current station.
- 4 Press **SOURCE/SET** to confirm.
- 5 Repeat the steps above to store more stations.
 - To listen to a preset station, press **- TUNING/TIME** or **TUNING/TIME +** repeatedly until its preset number is displayed.

7 Play from an external device

Through an audio input cable, you can play audio that is transferred from an external audio device, for example, an MP3 player.



- 1 Connect an audio input cable with a 3.5-mm connector on both ends between
 - the **AUDIO IN** socket on this product, and
 - the headphone socket of an external device.
- 2 Press **SOURCE/SET** to switch the product to the **AUDIO IN** mode.
- 3 Play audio on the external device (refer to its user manual).

8 Other features

Set an alarm timer

Note

- Make sure that you have set the clock correctly.

- 1 Press and hold **AL1/AL2** for 2 seconds to activate alarm setting.
↳ The hour digits blink.
- 2 Press **- TUNE/TIME** or **TUNE/TIME+** repeatedly to set the hour, and then press **SOURCE/SET** to confirm.
↳ The minute digits blink.
- 3 Press **- TUNE/TIME** or **TUNE/TIME+** repeatedly to set the minute, and then press **SOURCE/SET** to confirm.
- 4 Press **- TUNE/TIME** or **TUNE/TIME+** to select an alarm source, and then press **SOURCE/SET** to confirm.
 - **TUNE**: the last listened FM radio station

TUNE

- **BUZ**: the buzzer

BUZ

- 5 Press **- TUNE/TIME** or **TUNE/TIME+** to set the alarm volume, and then press **SOURCE/SET** to confirm.
↳ The alarm time and icon are displayed.

Activate/deactivate alarm timer

- 1 Press **AL1/AL2** to view alarm settings.
- 2 Press **AL1/AL2** again to activate or deactivate the alarm timer:
 - ↳ The alarm icon appears if alarm timer is on and disappears if it is off.
 - To stop the ringing alarm, press the corresponding **AL1/AL2**.
 - ↳ The alarm repeats ringing for the next day.

Snooze alarm

When alarm sounds, press **SNOOZE**.

- ↳ The alarm snoozes and repeats ringing nine minutes later.

Set the sleep timer

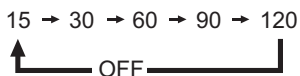
This product can switch to standby mode automatically after a preset period.

Press **SLEEP** repeatedly to select the sleep timer period (in minutes).

- ↳ When the sleep timer is activated, **zZ** appears.

To deactivate the sleep timer

Press **SLEEP** repeatedly until **[OFF]** (off) appears.



Adjust display brightness

Press **BRIGHTNESS** repeatedly to select different brightness levels.

9 Product information



Note

- Product information is subject to change without prior notice.

General information

AC Power	Model: AS100-050-AA200 Input: 100 - 240 V ~, 50/60 Hz, 0.5 A Output: 5 V == 2.0 A
Operation Power Consumption	< 15 W
Standby Power Consumption	< 1 W
Max. load of USB output	5 V == 1.6 A
Dimensions - Main Unit (W × H × D)	137 × 62 × 141 mm
Weight - With Packing - Main Unit	0.87 kg 0.53 kg

Bluetooth

Bluetooth specification	V2.1
Supported profiles	A2DPV1.0, AVRCP V1.0
Range	10 m (Free space)

Tuner (FM)

Tuning Range	87.5 - 108 MHz
Sensitivity - Mono, 26dB S/N Ratio	< 22 dBf
Search Selectivity	> 28 dBf
Total Harmonic Distortion	< 3%
Signal to Noise Ratio	> 50 dB

Amplifier

Rated Output Power	2 X 2.5W RMS
--------------------	--------------

Speakers

Speaker impedance	4 Ohm
Speaker driver	1.5" full range

10 Troubleshooting



Warning

- Never remove the casing of this product.

To keep the warranty valid, never try to repair the product yourself.

If you encounter problems when using this device, check the following points before requesting service. If the problem remains unsolved, go to the Philips Web page (www.philips.com/support). When you contact the Consumer Care, make sure that the product is nearby and the model number and serial number are available.

General

No power

- Make sure that the AC power adaptor is connected properly.
- Make sure that there is power at the AC outlet.

No sound or poor sound

- Adjust the volume of this product and the connected device.
- Make sure that the Bluetooth connection is valid between your Bluetooth device and this product.

Clock setting erased

- Power has been interrupted or the power adapter has been disconnected.
- Reset the clock.

About Bluetooth device

The audio quality is poor after connection with a Bluetooth-enabled device.

- The Bluetooth reception is poor. Move the device closer to this product or remove any obstacle between them.

Cannot connect with the device.

- The Bluetooth function of the device is not enabled. Refer to the user manual of the device for how to enable the function.
- This product is already connected with another Bluetooth-enabled device. Disconnect that device and then try again.

The paired device connects and disconnects constantly.

- The Bluetooth reception is poor. Move the device closer to this product or remove any obstacle between them.
- For some devices, Bluetooth connection may be deactivated automatically as a power-saving feature. This does not indicate any malfunction of this product.

11 Notice

Any changes or modifications made to this device that are not expressly approved by WOOX Innovations may void the user's authority to operate the equipment.

Compliance

Notice for the USA and Canada

This device complies with Part 15 of the FCC Rules and RSS standard of Industry Canada. Operation is subject to the following two conditions:

- 1** this device may not cause harmful interference, and
- 2** this device must accept any interference received, including interference that may cause undesired operation.

This equipment has been tested and found to comply with the limits for a Class B digital device, pursuant to part 15 of the FCC Rules and ICES-003 of Industry Canada . These limits are designed to provide reasonable protection against harmful interference in a residential installation. This equipment generates, uses, and can radiate radio frequency energy and, if not installed and used in accordance with the instruction manual, may cause harmful interference to radio communications. However, there is no guarantee that interference will not occur in a particular installation. If this equipment does cause harmful interference to radio or television reception, which can be determined by turning the equipment off and on, the user is encouraged to try to correct the interference by one or more of the following measures:

- Relocate the receiving antenna.
- Increase the separation between equipment and receiver.

- Connect the equipment into an outlet on a circuit different from that to which the receiver is connected.
- Consult the dealer or an experienced radio/TV technician for help.

RF Radiation Exposure Statement: This equipment complies with FCC's and IC's RF radiation exposure limits set forth for an uncontrolled environment. The antenna(s) used for this transmitter must be installed and operated to provide a separation distance of at least 20 cm from all persons and must not be collocated or operating in conjunction with any other antenna or transmitter. Installers must ensure that 20cm separation distance will be maintained between the device (excluding its handset) and users.

Disposal of your old product

Your product is designed and manufactured with high quality materials and components, which can be recycled and reused. Never dispose of your product with other household waste. Please inform yourself about the local rules on the separate collection of electrical and electronic products and batteries. The correct disposal of these products helps prevent potentially negative consequences on the environment and human health. Please visit www.recycle.philips.com for additional information on a recycling center in your area.

Environmental information

All unnecessary packaging has been omitted. We have tried to make the packaging easy to separate into three materials: cardboard (box), polystyrene foam (buffer) and polyethylene (bags, protective foam sheet.) Your system consists of materials which can be recycled and reused if disassembled by a specialized company. Please observe the local regulations regarding the disposal of packaging materials, exhausted batteries and old equipment.

Trademark notice

The Bluetooth® word mark and logos are registered trademarks owned by Bluetooth SIG, Inc. and any use of such marks by WOOX Innovations is under license.



The N Mark is a trademark or registered trademark of NFC Forum, Inc. in the United States and in other countries.

Copyright

2013 © WOOX Innovations Limited. All rights reserved.

Philips and the Philips' Shield Emblem are registered trademarks of Koninklijke Philips N.V. and are used by WOOX Innovations Limited under license from Koninklijke Philips N.V.' Specifications are subject to change without notice. WOOX reserves the right to change products at any time without being obliged to adjust earlier supplies accordingly.

PHILIPS LIMITED WARRANTY ONE (1) YEAR

WARRANTY COVERAGE:

PHILIPS warranty obligation is limited to the terms set forth below.

WHO IS COVERED:

Philips warrants the product to the original purchaser or the person receiving the product as a gift against defects in materials and workmanship as based on the date of original purchase ("Warranty Period") from an Authorized Dealer. The original sales receipt showing the product name and the purchase date from an authorized retailer is considered such proof.

WHAT IS COVERED:

The Philips warranty covers new products if a defect in material or workmanship occurs and a valid claim is received by Philips within the Warranty Period. At its option, Philips will either (1) repair the product at no charge, using new or refurbished replacement parts, or (2) exchange the product with a product that is new or which has been manufactured from new, or serviceable used parts and is at least functionally equivalent or most comparable to the original product in Philips current inventory, or (3) refund the original purchase price of the product. Philips warrants replacement products or parts provided under this warranty against defects in materials and workmanship from the date of the replacement or repair for ninety (90) days or for the remaining portion of the original product's warranty, whichever provides longer coverage for you. When a product or part is exchanged, any replacement item becomes your property and the replaced item becomes Philips' property. When a refund is given, your product becomes Philips' property.

Note: Any product sold and identified as refurbished or renewed carries a ninety (90) day limited warranty.

Replacement product can only be sent if all warranty requirements are met. Failure to follow all requirements can result in delay.

WHAT IS NOT COVERED - EXCLUSIONS AND LIMITATIONS:

This Limited Warranty applies only to the new products manufactured by or for Philips that can be identified by the trademark, trade name, or logo affixed to it. This Limited Warranty does not apply to any non-Philips hardware product or any software, even if packaged or sold with the product. Non-Philips manufacturers, suppliers, or publishers may provide a separate warranty for their own products packaged with the bundled product.

Philips is not liable for any damage to or loss of any programs, data, or other information stored on any media contained within the product, or any non-Philips product or part not covered by this warranty. Recovery or reinstallation of programs, data or other information is not covered under this Limited Warranty.

This warranty does not apply (a) to damage caused by accident, abuse, misuse, neglect, misapplication, or non-Philips product, (b) to damage caused by service performed by anyone other than Philips or Philips Authorized Service Location, (c) to a product or a part that has been modified without the written permission of

Philips, or (d) if any Philips serial number has been removed or defaced, or (e) product, accessories or consumables sold "AS IS" without warranty of any kind by including refurbished Philips product sold "AS IS" by some retailers.

This Limited Warranty does not cover:

- Shipping charges to return defective product to Philips.
- Labor charges for installation or setup of the product, adjustment of customer controls on the product, and installation or repair of antenna/signal source systems outside of the product.
- Product repair and/or part replacement because of improper installation or maintenance, connections to improper voltage supply, power line surge, lightning damage, retained images or screen markings resulting from viewing fixed stationary content for extended periods, product cosmetic appearance items due to normal wear and tear, unauthorized repair or other cause not within the control of Philips.
- Damage or claims for products not being available for use, or for lost data or lost software.
- Damage from mishandled shipments or transit accidents when returning product to Philips.
- A product that requires modification or adaptation to enable it to operate in any country other than the country for which it was designed, manufactured, approved and/or authorized, or repair of products damaged by these modifications.
- A product used for commercial or institutional purposes (including but not limited to rental purposes).
- Product lost in shipment and no signature verification receipt can be provided.
- Failure to operate per Owner's Manual.

TO OBTAIN ASSISTANCE IN THE U.S.A., CANADA, PUERTO RICO, OR U.S. VIRGIN ISLANDS...

Contact Philips Customer Care Center at:
1-866-309-0845

REPAIR OR REPLACEMENT AS PROVIDED UNDER THIS WARRANTY IS THE EXCLUSIVE REMEDY FOR THE CONSUMER. PHILIPS SHALL NOT BE LIABLE FOR ANY INCIDENTAL OR CONSEQUENTIAL DAMAGES FOR BREACH OF ANY EXPRESS OR IMPLIED WARRANTY ON THIS PRODUCT. EXCEPT TO THE EXTENT PROHIBITED BY APPLICABLE LAW, ANY IMPLIED WARRANTY OF MERCHANTABILITY OR FITNESS FOR A PARTICULAR PURPOSE ON THIS PRODUCT IS LIMITED IN DURATION TO THE DURATION OF THIS WARRANTY.

Some states do not allow the exclusions or limitation of incidental or consequential damages, or allow limitations on how long an implied warranty lasts, so the above limitations or exclusions may not apply to you.

This warranty gives you specific legal rights. You may have other rights which vary from state/province to state/province.

P&F USA, Inc. PO Box 2248, Alpharetta, GA 30023-2248

3140 035 51091



P&F USA Inc.
PO Box 2248
Alpharetta, GA 30023-2248
Phone 1 866 309 0845
Meet Philips at the Internet
<http://www.philips.com/welcome>

Specifications are subject to change without notice
2013 © WOOX Innovations Limited. All rights reserved.

This product was brought to the market by WOOX Innovations Limited or one of its affiliates, further referred to in this document as WOOX Innovations, and is the manufacturer of the product. WOOX Innovations is the warrantor in relation to the product with which this booklet was packaged. Philips and the Philips Shield Emblem are registered trademarks of Koninklijke Philips N.V.

SB170_37_UM_V1.0



Free Manuals Download Website

<http://myh66.com>

<http://usermanuals.us>

<http://www.somanuals.com>

<http://www.4manuals.cc>

<http://www.manual-lib.com>

<http://www.404manual.com>

<http://www.luxmanual.com>

<http://aubethermostatmanual.com>

Golf course search by state

<http://golfingnear.com>

Email search by domain

<http://emailbydomain.com>

Auto manuals search

<http://auto.somanuals.com>

TV manuals search

<http://tv.somanuals.com>