

PHILIPS

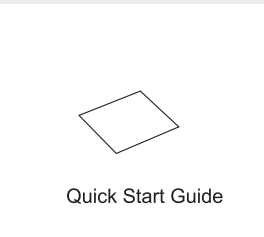
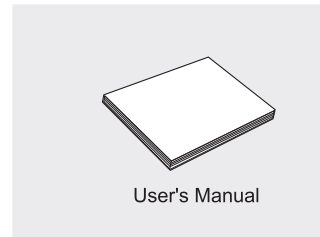
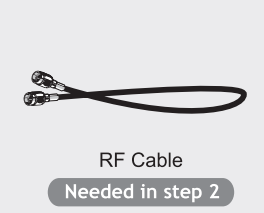
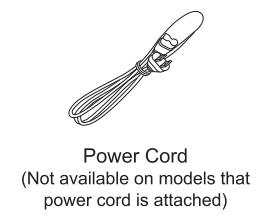
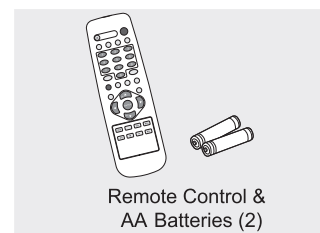
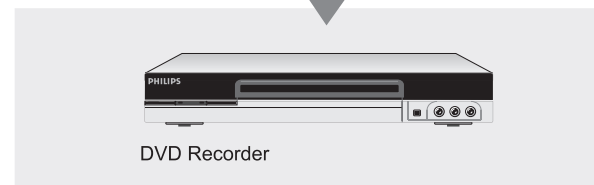
DVD RECORDER

Quick Start

Thank you for purchasing PHILIPS DVD Recorder. Please follow the step-by-step instructions to connect and set up your new DVD recorder.

Please complete these recommended steps before using your recorder. For more advanced setups and operations, please refer to the User's Manual. If you encounter any problem setting up or operating this DVD recorder, please refer to the "Troubleshooting" section in the User's Manual before contacting technical support.

1 Unpack

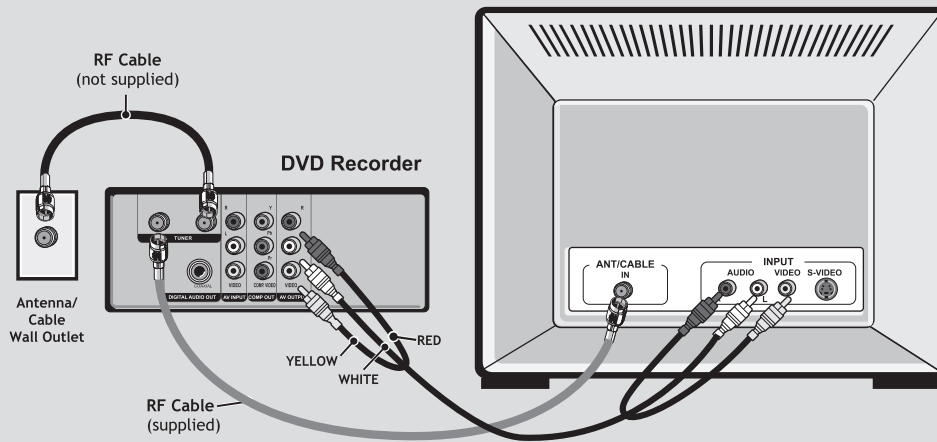
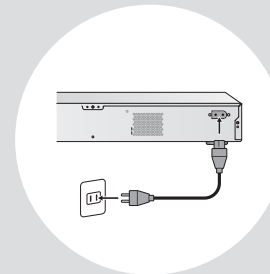


ⓘ If there's any item missing, contact the store where this unit is purchased.

Connect Antenna Or Basic Cable Service

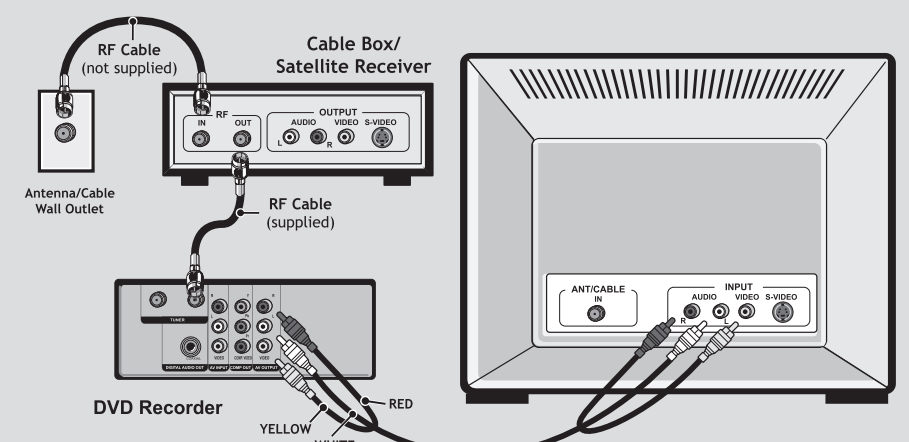
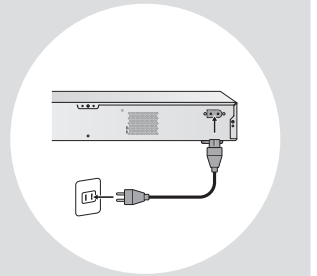
- 1 Connect Antenna or Cable service to RF-IN jack on the unit using RF cable (see picture below).
- 2 Connect DVD Recorder to your TV set using AV cable (see picture below).
- 3 If you have other AV sources you wish to connect to this DVD recorder, see panel A, B, C below for reference.
- 4 Attach power cord to the DVD recorder and then connect to the wall outlet (see picture on the right).
- 5 Press **POWER** key on the remote or front panel to turn on the DVD recorder.
- 6 Turn on your TV and switch to proper input.
- 7 Proceed with **Step 3** ⓘ on the back page

2 Connections



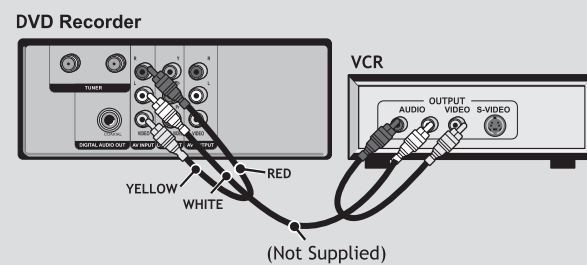
Connect Cable Converter/Satellite Receiver

- 1 Connect Cable Converter/Satellite Receiver to RF-IN jack on the unit using RF cable (see picture below).
- 2 Connect DVD Recorder to your TV set using AV cable (see picture below).
 If you need to use a setup box, cable converter or satellite receiver to receive TV signal, skip channel setup in STEP 3 on the next page.
- 3 If you have other AV sources you wish to connect to this DVD recorder, see panel A, B, C below for reference.
- 4 Attach power cord to the DVD recorder and then connect to the wall outlet (see picture on the right).
- 5 Press **POWER** key on the remote or front panel to turn on the DVD recorder.
- 6 Turn on your TV and switch to proper input.
- 7 Proceed with **Step 3** ⓘ on the back page.



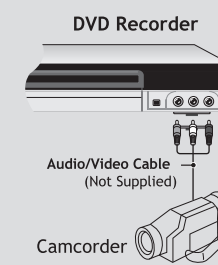
A Connect VCR as source

- 1 Connect VCR to the DVD recorder using AV cable (see picture below).
- 2 Connect the power cords of both VCR and DVD recorder to the wall power outlet. Turn the VCR and the DVD recorder on.



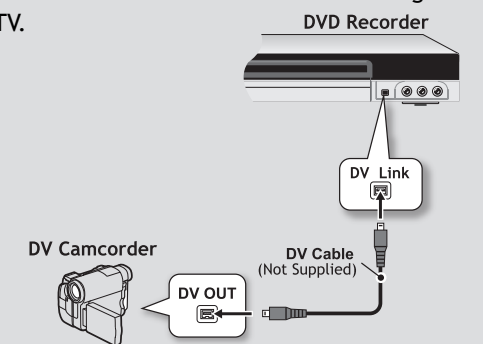
B Connect Camcorder as source

- 1 Connect Camcorder to the DVD recorder using AV cable (see picture below).
- 2 If the DVD recorder is not connected to a TV set, return to the Connection Guide above to continue connecting the recorder to TV.



C Connect DV as source

- 1 Connect DV to the DVD recorder using DV cable (see picture below).
- 2 If the DVD recorder is not connected to a TV set, return to the Connection Guide above to continue connecting the recorder to TV.



ⓘ Note: For advanced connections, please refer to the "Connecting Up" section (p.6) in the User's Manual.

3 Setup

Set the Language

- 1 Press **SETUP** key on the remote to enter the Setup menu screen.
- 2 Use the **▲ / ▼** key on the remote to highlight “Language” and press **OK** key on the remote to select.
- 3 Use the **▲ / ▼** key on the remote to highlight “OSD (On-Screen Display)” and press **OK** key to select.
- 4 Use the **▲ / ▼** key on the remote to highlight your desired language and press **OK** key on the remote to select.
- 5 Press **SETUP** key to exit.



TV Channel Setup

- 1 Press **SETUP** key on the remote to enter the Setup menu screen.
- 2 Use the **▲ / ▼** to highlight “TV Tuner” and press **OK** to select.
- 3 Use the **▲ / ▼** to highlight an item from the list of options and press **OK** to select.

When selecting TV signal, choose:

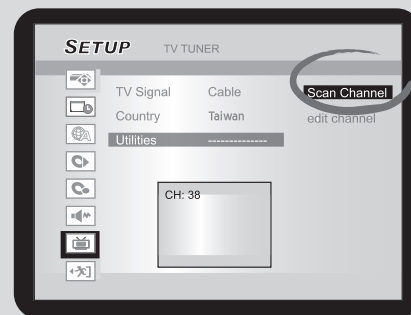
- “Antenna”, if you are using a standard antenna to receive TV signal.
- “Cable”, if you are using basic cable to receive TV signal.

(For detailed TV signal options, please refer to the “Getting Started” section (p.12) in the User’s Manual.)

- 4 Use the **▲ / ▼** to highlight “Utilities” and press **OK** to select. Press **OK** again to start “Scan Channel”.

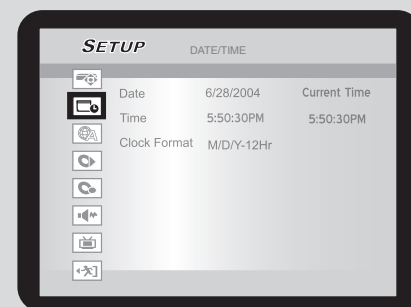
It will take a few minutes for this DVD recorder to scan for channels provided in your area. You may see the picture change in the on-screen small window while the system is scanning for channels. Once scanning is completed, the window will be tuned to the first channel available.

- 5 Press **SETUP** to exit.



Set Date/Time

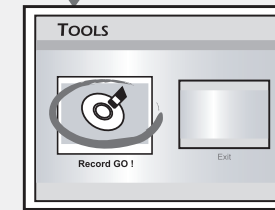
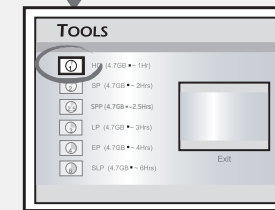
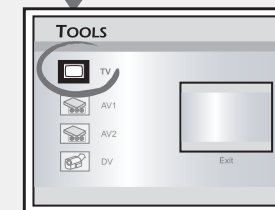
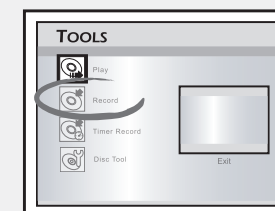
- 1 Press **SETUP** key on the remote to enter the Setup menu screen
- 2 Use the **▲ / ▼** keys to select “Date/Time” and press **OK** key.
- 3 Use the **▲ / ▼** keys to select “Date” and press **OK** key.
- 4 Use the **▲ / ▼** and the **◀ / ▶** keys to set the month, day, year and press **OK** key to confirm.
- 5 Use the **▲ / ▼** keys to select “Time” and press **OK** key.
- 6 Use the **▲ / ▼** and the **◀ / ▶** keys to set the hour, minute, second and AM/PM and press **OK** key to confirm.
- 7 Press **SETUP** key to exit.



4 Experience Your New DVD Recorder

Make Your First DVD Recording

- 1 Press **OPEN/CLOSE** key to open the disc tray. Place the enclosed blank DVD disc on the disc tray. Press **OPEN/CLOSE** key to close the disc tray.
It may take a few minutes for the DVD recorder to prepare the disc for recording.
- 2 Press **TOOLS** key to display the “TOOLS” menu.
- 3 Select “Record” and press **OK** key to confirm.
- 4 Select a source and press **OK** key to confirm.
*If “TV” is selected, select the channel number and press **OK** key to confirm.*
- 5 The DVD recorder will automatically detect the disc you have inserted, and suggest a suitable format for recording. If the suggested format is not what you wish to use, press **▲ / ▼** key to select “Change Disc” and then press **OK** to confirm.
- 6 Select a desired recording mode and press **OK** key to confirm.
 - **HQ** - High Quality (1 hr/disc)
 - **SP** - Standard Play (2 hrs/disc)
 - **SPP** - Standard Play Plus(2.5 hrs/disc)
 - **LP** - Long Play (3 hrs/disc)
 - **EP** - Extended Play (4 hrs/disc)
 - **SLP** - Super Long Play (6 hrs/disc)
- 7 Press **OK** key to start recording.
 - To pause recording, press **II PAUSE/STEP** key.
 - To resume recording, press **II PAUSE/STEP** key or **● REC** key.
 - To view the status of your recording, press **DISPLAY** key.
- 8 To stop recording, press **■ STOP** key.
It may take a few seconds for the DVD recorder to stop the recording.
- 9 To view what you’ve recorded, press **PLAY** key, select the thumbnail for the desired show and press **OK** key to confirm.



The “Easy Guider” menu makes features like recording, timer recording and finalizing a snap.

Disc Finalization

Before you take the disc recorded on this DVD recorder to other players, you must finalize it (except for DVD+RW discs)

- 1 Press **TOOLS** to display the “Easy Guider” menu.
- 2 Select “Disc Tools”, then “Finalize” and press **OK** key to confirm.
- 3 Press **ENTER** key to start finalizing.
 - Once you finalize a disc, you cannot add any more recording on the disc.
 - Disc finalization may take a few minutes to complete.
 - The disc will now play on most DVD playback device.

For more details on supported disc types and file formats, please refer to the “Overview” section (p.4) in the User’s Manual.

Got questions?

1. Refer to “**Troubleshooting**” section (p.38) in the User’s Manual
2. Check out www.philips.com/support
3. Contact Optimal Customer Care at 0800-231-099

PHILIPS

Free Manuals Download Website

<http://myh66.com>

<http://usermanuals.us>

<http://www.somanuals.com>

<http://www.4manuals.cc>

<http://www.manual-lib.com>

<http://www.404manual.com>

<http://www.luxmanual.com>

<http://aubethermostatmanual.com>

Golf course search by state

<http://golfingnear.com>

Email search by domain

<http://emailbydomain.com>

Auto manuals search

<http://auto.somanuals.com>

TV manuals search

<http://tv.somanuals.com>