

3 Enjoy

Start recording

A Recording from the TV or an external device

- 1 Insert a recordable DVD disc in the tray.

Types of discs for recording



- To record a TV programme, use **P** **+** **-** to scroll through the channels, or press **0 - 9** to select the channel that you want to record.

Note If you have used Option B in 'Basic Connection', press **SOURCE** repeatedly to select 'EXT2'. Use the remote control of your cable box to select the TV programme to record.

- To record from a connected device, press **SOURCE** repeatedly to select the source to record from (DV, CAM or EXT2).

Note Press **REC MODE** repeatedly to select a preferred recording mode.

Record Quality	Hours of recording that can be stored on an empty DVD recordable disc.	
	DVD±R/ DVD±RW	DVD±R Double Layer
HQ (high quality)	1	1 hr 55 mins
SP (standard play)	2	3 hrs 40 mins
SPP (standard play plus)	2.5	4 hrs 35 mins
LP (long play)	3	5 hrs 30 mins
EP (extended play)	4	7 hrs 20 mins
SLP (super long play)	6	12 hrs

- 2 Press **REC** ● to start recording, press **REC** ● again to automatically record 30 minutes.
- 3 To end recording, press **STOP** ■. 'UPDATE' will be displayed on the recorder.
- 4 To playback the recording, press **DISC**, select the title and press **▶||**.

Start playback

A Playback from disc

- 1 Press **OPEN/CLOSE** ▲ to open the disc tray Load a disc and close the disc tray.
- 2 Press **DISC**.
- 3 Use **◀▶▲▼** keys to reach the title/file you want to play and press **▶||** to start.

B Playback from USB device

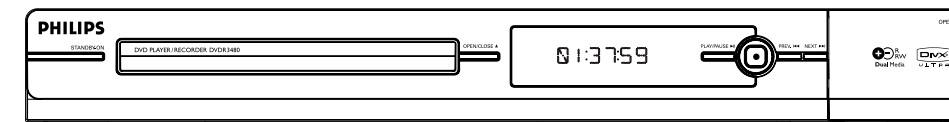
- 1 Insert the USB device to the USB port.
- 2 Press **USB** to show the contents list.
- 3 Select the contents type and press **▶ right**.
- 4 Select a data file (MP3, WMA, DivX and JPEG) and press **▶||** to start playback.

Quick Start Guide

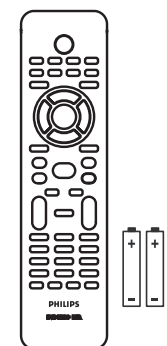


- 1 Connect
- 2 Set up
- 3 Enjoy

What's in the box?



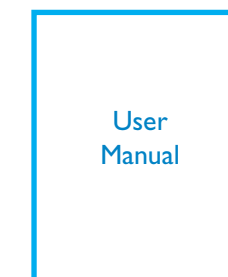
DVD Player/ Recorder



Remote Control and 2 batteries



RF Antenna Cable



User Manual

Need help?

User Manual

See the user manual that came with your Philips recorder.

Online

Go to www.philips.com/welcome.



2007 © Koninklijke Philips N.V.
All rights reserved.

12 NC 3139 245 27162

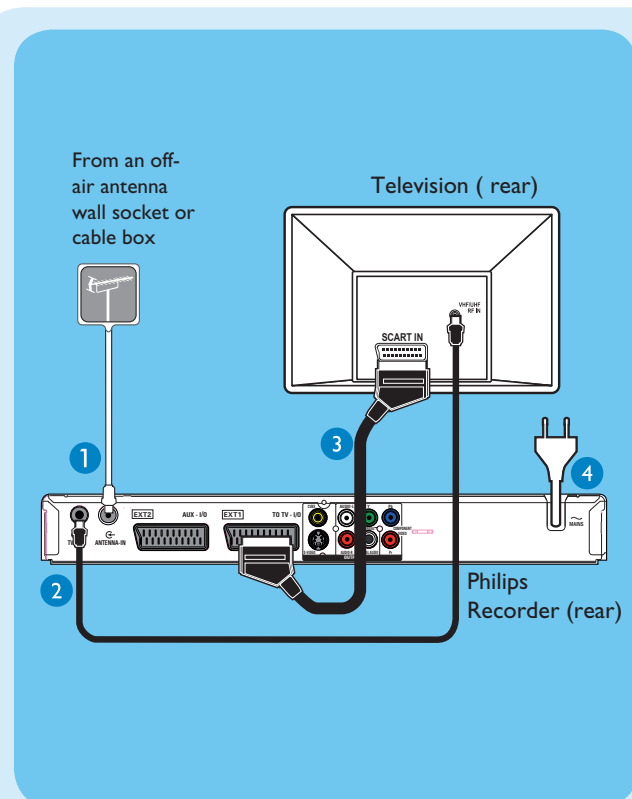


1 Connect

Basic Connection

Before Connecting

Select one of the following basic connections (**A** or **B**) according to the type of connecting devices you have.

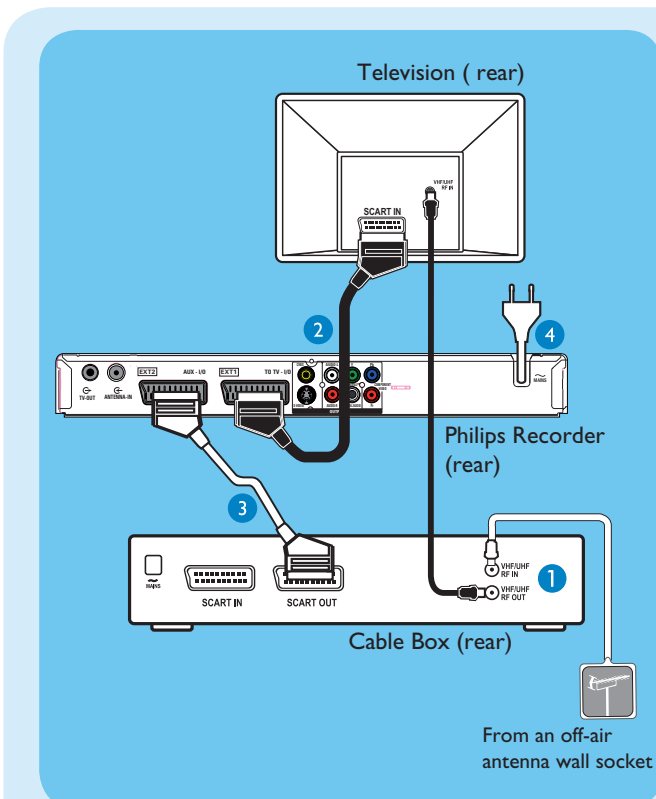


Option A

Use this connection if you are connecting the antenna cable directly from the antenna wall socket or from a Cable Box without a Scart output socket.

- 1 Unplug the antenna cable that is currently connected to your TV and plug in the antenna cable to the **ANTENNA-IN** socket on this recorder.
- 2 Connect the supplied RF antenna cable from the **TV-OUT** socket on this recorder to the Antenna In socket on the TV.
- 3 Connect a scart cable (not supplied) from the **EXT1 TO TV-I/O** socket on this recorder to the Scart input socket on your TV.
- 4 Plug in the power cable from the recorder to an AC power outlet.

Note See the accompanying user manual for other possible connections (e.g. Composite Video, Component Video, S-VIDEO).



Option B

Use this connection if your current antenna cable is connecting through a Cable Box with Scart output socket.

- 1 Keep the existing antenna connection from the Cable box to your TV.
- 2 Connect a scart cable (not supplied) from the **EXT1 TO TV-I/O** socket on this recorder to the Scart input socket on your TV.
- 3 Connect another scart cable (not supplied) from the **EXT2 AUX-I/O** socket on this recorder to the Scart output socket on the Cable Box.
- 4 Plug in the power cable from the recorder to an AC power outlet.

2 Set up

A Finding the viewing channel

- 1 Press **STANDBY-ON** on the recorder.
- 2 Switch on the TV and other connected devices (e.g. Cable Box, Satellite Receiver). The installation menu is displayed.



- 3 In case you don't see the recorder's setting menu, press the Channel Down button on the TV's remote control repeatedly (or AV, SELECT, \square button) until you see the menu. This is the correct viewing channel for the recorder.

B Start basic setup

Use the recorder's remote control and follow the on-screen instructions to complete the installation.

Note Use up \blacktriangle and down \blacktriangledown keys to toggle through the options. Select an item by pressing right \blacktriangleright . To confirm a setting, press **OK**.

- 1 Select the recorder's menu display language.



- 2 Select the country of your residence.

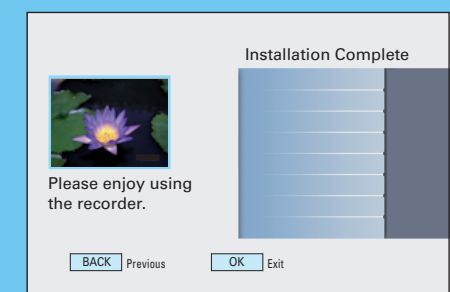


- 3 Set the date. Use the **alphanumeric keypad 0-9** or \blacktriangle \blacktriangledown \blacktriangleright \blacktriangleleft keys to enter the correct date. Press **OK** to confirm and continue.
- 4 Set the time. Use the **alphanumeric keypad 0-9** or \blacktriangle \blacktriangledown \blacktriangleright \blacktriangleleft keys to enter the correct time. Press **OK** to confirm and continue.

- 5 Automatic channel search begins.

Note If you have used Option B in 'Basic Connection' press **OK** to skip channel search and proceed to the next step.

- 6 All available TV channels are stored. The first preset programme appears.



- 7 Press **OK** to exit.

The recorder is now ready for use.

Free Manuals Download Website

<http://myh66.com>

<http://usermanuals.us>

<http://www.somanuals.com>

<http://www.4manuals.cc>

<http://www.manual-lib.com>

<http://www.404manual.com>

<http://www.luxmanual.com>

<http://aubethermostatmanual.com>

Golf course search by state

<http://golfingnear.com>

Email search by domain

<http://emailbydomain.com>

Auto manuals search

<http://auto.somanuals.com>

TV manuals search

<http://tv.somanuals.com>